



Volume 9

November 2004

No. 11

## Yard of the Month October 2004



**Betty Kramer**  
**9406 Brenham Court**

Betty Kramer has lived at 9406 Brenham Court in Willowbridge since October 1998. Betty is employed as a Senior Market Service Representative for Cooper Cameron Valves where she has worked for the past 35 years. She has two grown daughters, Lisa and husband "T" and Jennifer and husband, Mel. Jennifer is a second grade teacher at Owens Elementary and Lisa is a stay at home mom. Her grandchildren are: C.J., Caleb, Amanda, Hope, Kaitlyn and baby Kolby due in November. She enjoys spending time with the grandchildren.

Betty's front yard is nicely landscaped with ligustrums, redtip, nandina, Aztec grass, sago palm, lantana, holly, Indian hawthorne, boxwoods, several variety of jasmine, daisies, hibiscus, and caladiums. The beds are lit with accent lights and decorated with stones.



# Happy Thanksgiving!

## Willowbridge/Stonebridge Tennis Courts New Rules & Keys

*by Glen Telge*

The HOA Board has posted new rules at the Tennis Court, rekeyed the gate and made repairs to the fencing around the courts. The new rules were effective October 1, 2004.

There is now a sign-in process to use the courts (dry erase board near the gate). We have eliminated the option of reserving the courts in advance of play.

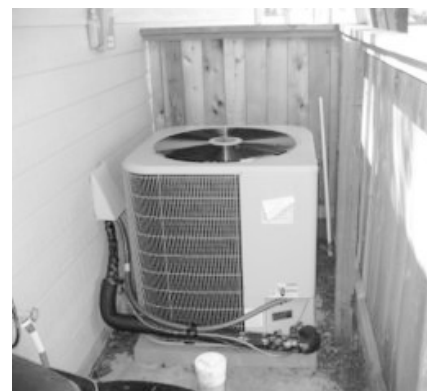
A resident is allowed only one guest and if you don't sign-in when you come to court you might be asked to leave when others arrive. The sign-in process is aimed at limiting players time on the courts when others are waiting to play and restricting non-residents from using the courts.

Your old key will no longer open the gate after October 1, 2004. To receive a new key, residents must call PCMI at 281-870-0585 and pay a \$20 fee. PCMI will keep track of which residents have been issued keys. Those who violate the tennis court rules will be barred from play.

## Willowbridge/Stonebridge Clubhouse AC System

*by Glen Telge*

Our Clubhouse's AC system was completely replaced with a new 5-ton unit in early October. The new system is configured to cool the building more quickly and efficiently than the builder-grade system that Centex had originally installed. We hope that everyone will enjoy improvement to our clubhouse.



# Willowbridge - Stonebridge

## Important Numbers

<b>All Emergencies</b> .....	<b>911</b>
Harris County Sheriff .....	713-221-6000
Harris County Animal Control .....	281-999-3191
Cy-Fair Hospital .....	281-890-4285
Houston Lighting & Power .....	713-207-7777
Center Point - Street Lights .....	713-207-2222
ENTEX Gas .....	713-659-2111
Newsletter Publisher	
Peel, Inc. ....	806-385-6444
Adver. Donna Sommer ... djsommer@aol.com,	832-237-4684
PCMI/Myla Chandler .....	281-870-0585x1313
Republic Waste .....	713-849-0400
Southwestern Bell - Repair .....	800-246-8464
- Billing .....	800-585-7928
Swimming Pool - Pay Phone .....	281-469-9004
Swimming Pool - Lifeguard .....	281-517-0225
W. Harris County MUD #11 .....	281-807-9500
Willow Place Post Office .....	281-890-9416
Willowbridge Website .....	www.willowbridgehoa.com

## Civic Association Directory

### Beautification Committee

Lydia Cruzen  
Glen Telge ..... 281-469-2525

### Block Captains Coordinator

Open

### Bunko

Denise Ramponi ..... 281-970-8151  
Shalene Fox ..... 281-807-1515

### Clubhouse/Pool Coordinator

Rita Keller ..... 281-870-0585 ext.1348

### Pool Tags

Karen ..... 281-890-4765

### Directory Committee

Shalene Fox ..... 281-807-1515

### Homeowners Association

PCMI - Myla Chandler myla@pcmi-us.com, 281-870-0585

### Marquee Coordinator

Glenda Stachowiak ..... 281-894-8339

### Mothers of Young Children

Amber Geldersma ..... 281-955-1698

### Needlecraft Group

Rebecca Vajdak ..... 281-894-8258

### Newsletter Coordinator

Bobby Knight ..... 281-890-2384

### Security Coordinator

George Schaudel ..... 281-469-0013

### Tennis

Vinh Vu ..... 281-469-5248

### Website Committee

Robert Logsdon ..... 281-970-1381

### Welcoming Committee

Karen Roush ..... kroush@houston.rr.com, 281-890-4765

### Yard of the Month Committee

Glen Telge ..... 281-469-2525

## Board of Directors

Glen Telge .....	President, Treasurer
Andrew Mears .....	Vice-President
Fred Edler .....	Secretary
Pete Lehle .....	Director

## Willowbridge Homeowners Association Inc. - PCMI

Myla Chandler ..... 281-870-0585x1313  
E-Mail ..... myla@pcmi-us.com  
Fax ..... 281-870-9170

If you have any questions or comments regarding the neighborhood please contact the #'s above.

## Advertising Information

Please support the businesses that advertise in the WillowTalk. Their advertising dollars make it possible for all Willowbridge residents to receive the monthly newsletter at no charge. No homeowners association funds are used to produce or mail the newsletters. If you would like to support the WillowTalk by advertising, please contact our sales representative, Donna Sommer @ 832-237-4684 or at dsummer@peelinc.com. The advertising deadline is the 10th of each month for the following month's newsletter.

## TEXAS FLOORING & ROOFING SERVICES

9211 West Rd @ Beltway 8

281-517-0006

Texas Flooring is your nearby flooring & roofing source.

Come see our showroom and visit the many samples of  
woods, tiles, laminates, and carpets.

Let us be part of your flooring & roofing project.

### WOODS & BAMBOO

Bruce, Robbins, Anderson, Hartco, Harris Tarket, WFI & Others

### TILE

Master Tile, ICI, Interceramic, Hutcherson, Daltile, Emser & Others

### LAMINATES

Pergo, Wilsonart, Witex, Armstrong, Quickstep, Mohawk & Others

### CARPET

Shaw, Mohawk, Beaulieu, Holleytex, Coronet, Color Vision & Others

### ROOFING SERVICES

Tear Off, Re-Deck, Haul Trash, Leak Repairs, over 30 years experience

### OTHERS

Countertops (Granite, Marble, & Tiles), Window Blinds, Wood  
Refinishing, Indoor/Outdoor Applications & Tub Surrounds

### Key Notes

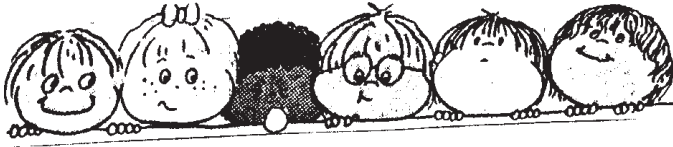
Owner Operated, Free home Estimates, In Store Specials,  
Financing & References Available

### STORE HOURS

Mon. - Sat. 10:00 am - 7:00 pm  
Sunday by appointment only.

VISIT US AT  
**TEXASFLOORING.COM**

## Mother's of Young Children



Every Monday - Meet at Willowbridge Park  
at 4:00.

Tues 11/2 7:00 pm - Mom's Meeting  
Christina Raymond's House, 8635 Ballinger  
RSVP to Christina at 281-477-9092 or  
crraymond@sbcglobal.net  
Bring a Dish to Share

Fri 11/5 10:30 am - Park Day at Bane Park  
Located at the Corner of W. Little York and  
Gessner  
Bring a Lunch

Tues 11/16 6:45pm  
Mom's Night Out at Beso 2300 Westheimer  
Meet at clubhouse at 6:45  
RSVP to Christina at 281-477-9092 or  
crraymond@sbcglobal.net

Wed 11/17 or Thur 11/18 Children's Museum  
Meet at clubhouse at 9:15  
Wed RSVP to Amber Geldersma 281-955-  
1698 ageldersma@houston.rr.com. Thurs  
RSVP to Deanna Harris 281-890-8313  
jeff.deanna.harris@sbcglobal.net

## Blessing of the Animals

Messiah Lutheran Church invites the entire  
community to bring their animals on Saturday,  
November 6 at 2 pm for a blessing service.  
All animals are welcome but they must be  
restrained.

**Free Popcorn, lemonade and balloons  
So bring the whole family!**

For more information call Messiah at 281-  
890-3013.



**ditech.com**  
Home Loans

## A DEAL UNLIKE ANY OTHER!

**NOW AVAILABLE TO THE RESIDENTS OF  
WILLOWBRIDGE-STONEBRIDGE, THEIR FAMILIES AND FRIENDS!**

**1/8% OFF OF OUR  
NATIONAL RATES  
OR  
UP TO \$750 OFF  
CLOSING COSTS  
ON SELECT PROGRAMS**

**PLUS  
\$500 OFF  
OF ANY NEW  
GM CAR PURCHASE  
WHEN YOUR  
LOAN CLOSES!**

To receive these discounts on any purchase, refi-  
nance or home-equity loan, YOU MUST CALL ME  
DIRECTLY! I have a dedicated team of loan agents  
waiting to assist you personally!

**YOUR CAR DISCOUNT APPLIES NOT  
ONLY TO GMC CARS BUT TO ANY OF  
THESE GM-OWNED COMPANIES:**

-CHEVROLET	-GMC
-PONTIAC	-HUMMER
-BUICK	-SATURN*
-CADILLAC	

THIS DISCOUNT IS NOT AVAILABLE TO THOSE  
WHO GO DIRECTLY TO DITECH.COM

**CALL TOM HARKAY, A RESIDENT OF STONEBRIDGE VILLAGE, AT 714-334-9251. (yes, it is 714!)**

\*Offer valid on retail purchase or lease of any eligible new and unused 2004 and 2005 models. 2005 Saturn and all SAAB models are excluded.

# Willowbridge - Stonebridge

## Willowbridge / Stonebridge Tennis Court Rules

(effective 10/1/04)

Dear Residents,

As the demand for the neighborhood tennis courts are rising and the shortage of courts, to better coordinate the use of the courts, below lists the rules and regulations effective immediately. At any time, if there are complaints or concerns, please report to PCMI 281-870-0585 x1313.

- (1) Guests Limited to One per Resident- Residents are limited to bring one non-resident guest to play with them. The resident must accompany their guest at ALL times. Residents must be playing on the same court as their guest (i.e. a resident cannot play singles on one court and two non-residents play singles on the other court).
- (2) Tennis Instructors- Tennis instructors are considered as a guest of the resident who is taking the lesson. Lessons must be scheduled on weekdays before noon, limited to 60 minutes and not interfere with other residents playing.
- (3) Large Group & Tournament Play- This is a neighborhood tennis court for use exclusively by our residents and their guests for recreational play. Large Groups (more than 4 persons playing together) must not monopolize the tennis courts. The Willowbridge/Stonebridge Neighborhood Tennis Club, which is open to all members of our community, should restrict their play to Thursday evenings, 6-9pm, during which time the courts are allowed for their exclusive use. The Guest limitation also applies to this organization.
- (4) Courts Not to be Reserved- Courts are available on a First-Come First-Serve basis only. Waiting players must place their name on the waiting list at the entrance to the court and wait outside the gate. Play is limited to 60 minutes plus a 15 minute allowance if 45 minutes has already expired. Any resident who has not signed in must leave the court if someone is waiting for their court. For example: If the resident has been playing for 30 minutes and someone comes to wait on the court, they have 30 minutes left to play; 55 minutes, they have 15 minutes; 95 minutes, they have 15 minutes; but if they forgot to sign in (Last Name & Time Started), they must forfeit the court immediately.

- (5) Keys & Gate Remain Locked- Residents utilizing the courts must have a tennis court key in their possession when on the courts. The gate is to remain locked at all times. Please turn off the lights and confirm closure of the gate when you exit to protect the facility.
- (6) Tennis Etiquette- Tennis etiquette dictates that if more than 3 balls are in use on a court, this should not interfere with play on the other court. Proper tennis etiquette rules apply.
- (7) Glass, Smoking- Glass containers and smoking are not permitted on the tennis courts.
- (8) Other Use- The courts must not be used for any other purpose other than specified above unless approved by the HOA Board. Organized tennis tournaments on these courts shall not be allowed unless approved by the HOA Board in advance.
- (9) Identification- Tennis court users may be asked to show identification to prove that they are a resident.

Willowbridge/Stonebridge HOA Board of Directors – September 6, 2004

For information about the courts you can contact our Neighborhood Tennis Coordinator

### Winn and Associates

Insurance & Financial Services Agency

Hurricane season is here! Are your home and auto properly insured? Did you know that it takes 30 days for a flood policy to take effect.

We can have your home covered for flood for about \$264 to \$296. Buy it today!

832-554-8200 Office  
832-878-9466 Mobile

[www.winnandassociates.com](http://www.winnandassociates.com)

Call for a free evaluation & receive  
a free Home Security Kit!



Sean Nguyen

Auto . Home . Life . Business . Flood . Health  
Annuities . IRA's . College Funding . 401K Rollovers



FARMERS

### SPECIAL MAID SERVICES



Residential & Commercial Cleaning  
Supplies & Equipment Furnished  
Bonded

**SAVE \$20!**

New customers receive  
\$5 OFF their first four cleanings.

**281-589-2042**



## Pumpkin Cake Roll

3 eggs	2 tsps. cinnamon
1 cup granulated sugar	1 tsp. ginger
2/3 cup pumpkin	1/2 tsp. nutmeg
1 tsp. lemon juice	1/2 tsp. salt
3/4 cup flour	1 tsp. baking powder
1 cup finely chopped walnuts	powdered sugar

Beat eggs on high speed for 5 minutes. Gradually beat in sugar. Stir in pumpkin and lemon juice. Stir together flour, baking powder, cinnamon, ginger, nutmeg, and salt. Fold into pumpkin. Spread in greased and floured 15 x 10 x 1" pan. Sprinkle with the finely chopped walnuts. Bake at 375 ° for 15 minutes. Turn out onto a towel which has been sprinkled with powdered sugar. Starting at narrow end, roll. Cool.

### Filling

1 cup powdered sugar	4 tablespoons margarine
2 - 3 oz. pkgs. cream cheese	1 1/2 tsp. vanilla

Beat smooth. Spread over cooled, unrolled cake. Roll and chill. Slice. Very good and keeps well in refrigerator!



## Northwest Harris County Aggie Mothers' Club

### November 8, 2004 - Second Tuesday of the month

Your Aggie's memories last a lifetime. So true yours, as an Aggie Mom. Please join the Northwest Harris County Aggie Mothers' Club for an evening of fun and camaraderie making your very own 'memory' page, note card, or frame. It's a great way to socialize with our new 'Fish Moms' and allows them the opportunity to learn more about us too!

Our meetings begin with a brief social at 7:00p.m. at the Foundry Methodist Church, in the Fellowship Hall, 8350 Jones Road, Jersey Village (one block North of Hwy 290)

For more information or carpool possibilities please call:

Mary Vargo at: 281-433-3042, E-mail – mkvargo1@juno.com

### December 14, 2004 – Second Tuesday of the month

With Christmas right around the corner, you will definitely need an evening of fun, laughter, and relaxation. Please join the Northwest Harris County Aggie Mothers' Club for their annual 'Ornament Exchange' party. Please bring an "Aggie-ized" ornament (if you can write anything 'Aggie' on it or if it's Maroon then it's "aggie-ized"!)

Our meetings begin with a brief social at 7:00p.m. at the Foundry Methodist Church, in the Fellowship Hall, 8350 Jones Road, Jersey Village (one block North of Hwy 290)

For more information or carpool possibilities please call:

Mary Vargo at: 281-433-3042, E-mail – mkvargo1@juno.com

*To the wonderful staff of the Atrium Salon & Day Spa,*

*Robby and I enjoyed the wonderful facial by Rachel and the soothing massage by Dareshu. They both helped make our special day more relaxing.*

*Also talking with Sam on the arrangements made things exciting as it was a surprise for Robby. Thanks for the wine, the kindness, we will always remember and pass the word among our friends.*

*Thelma & Robby Coggin*

**Atrium**  
salon & day spa

9720 Jones Rd @ Steepleway, #280  
Houston, TX 77065

**281-897-9518**

~Atrium now sells CHI flat iron~

**\$5<sup>00</sup> OFF** any service  
with coupon

One coupon per client. Not valid on gift certificate. exp. 01/15/15



## Imprint your holiday cards with the easy way at your Hallmark Gold Crown Store.

Imprinting your return address on envelopes and messages on the inside of greeting cards saves time and adds a touch of elegance to all your holiday greetings. This year, trust your local Hallmark Gold Crown Store to imprint your cards quickly and beautifully.

**Rachael's**



- 9105 Beltway 8 @ West Road  
281-890-9500
- 12240 FM 1960 W @ N. Eldridge  
281-469-3881
- 12312 Barker-Cypress @ 290  
281-256-9800
- 13732 Hwy 290 @ W. Tidwell  
713-996-8600

# Willowbridge - Stonebridge

## November 2004

Sunday	Monday	Tuesday	Wednesday	Thursday	Friday	Saturday
	1	2 Mom's Meeting 	3 Men's Game Night	4	5 Mom's Group Park Day 	6 Blessing of the Animals Messiah Lutheran
7	8 Bunko	9 Bridge 	10	11 VETERANS DAY 	12 	13
14	15 Newsletter Deadline	16 Mom's Night Out 	17 Mom's Group Children's Museum	18 Mom's Group Children's Museum 	19 	20
21	22	23 	24	25  Thanksgiving Day	26 	27
28	29	30 				

### Dominguez

#### Pest & Lawn Service

Roaches • Fleas • Termites  
Rodents • Mosquitos

**LAWN & ORNAMENTAL TREATMENT**

**TERMITE INSPECTIONS**  
**MOSQUITO MIST AWAY SYSTEMS**

Commercial • Residential

*Family Owned &  
Operated Since 1980*



Se Habla Español



**713.691.2696**



## HARDIPLANK®

**Alcoa Vinyl Siding  
& Replacement Windows**

**FREE ESTIMATES**

**20% Off**

with this ad



*Call Fred*

**Allied Siding & Windows**

**281-357-8801**

Over 20 years experience



**Fully Insured • References • Financing Available**

## December 2004

<i>Sunday</i>	<i>Monday</i>	<i>Tuesday</i>	<i>Wednesday</i>	<i>Thursday</i>	<i>Friday</i>	<i>Saturday</i>
			<i>1</i> Men's Game Night	<i>2</i>	<i>3</i> 	<i>4</i>
<i>5</i>	<i>6</i>	<i>7</i> 	<i>8</i>	<i>9</i>	<i>10</i> 	<i>11</i>
<i>12</i>	<i>13</i> Bunko	<i>14</i>  Bridge	<i>15</i> Newsletter Deadline	<i>16</i>	<i>17</i> 	<i>18</i>
<i>19</i>	<i>20</i>	<i>21</i> 	<i>22</i>	<i>23</i>	<i>24</i> 	<i>25</i> Christmas Day 
<i>26</i>	<i>27</i>	<i>28</i> 	<i>29</i>	<i>30</i>	<i>31</i> 	

## Phoenix Rising

7085 Highway 6 North  
Houston Tx 77095  
Located in Randall's Shopping Plaza  
@ corner of Hwy 6 and Fm 529  
281-345-4752  
[www.prhomedecor.com](http://www.prhomedecor.com)



Magnificent silk  
floral pieces plus  
fine home  
accessories and  
furniture. Your  
new complete  
home decor  
store. Come see  
the art of  
Phoenix...



# Willowbridge - Stonebridge

## FOOTBALL WORDSEARCH

PASS  
PENALTY  
TACKLE  
SUNDAY  
DEFENSE  
NFL  
FOOTBALL  
NFC



TEAM  
AFC  
OFFENSE  
SUPERBOWL  
CHEERS  
FUMBLE  
PARTY  
FRIENDS

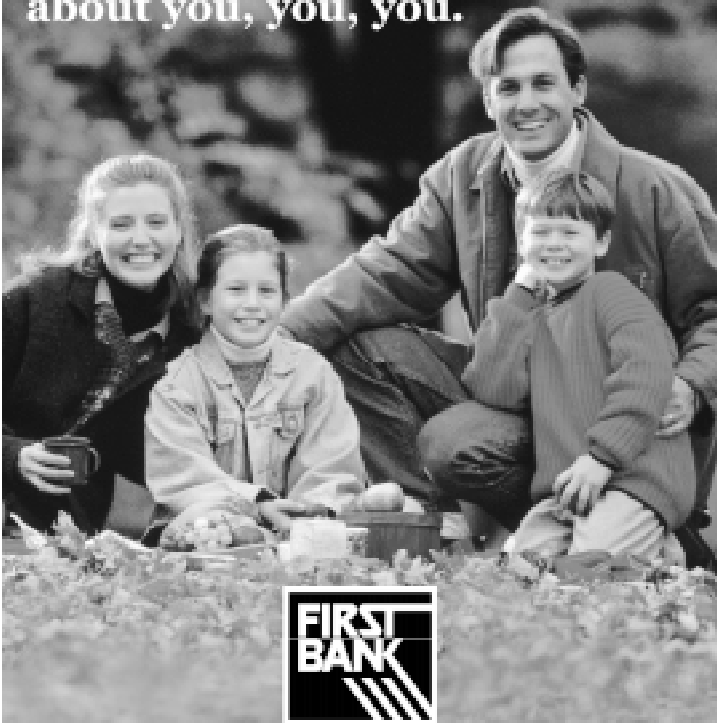


COACH  
TOUCHDOWN  
REFEREE  
WIN  
TAILGATE  
FANS  
ENTERTAINMENT  
BLOCK  
QUARTERBACK



C	B	O	Q	U	A	R	T	E	R	B	A	C	K	X	E
O	H	N	F	K	F	U	E	G	U	S	L	W	L	O	N
A	D	E	I	F	C	T	A	F	Y	M	O	O	V	F	T
C	T	Y	E	F	E	U	M	A	E	G	P	N	C	O	E
H	A	P	G	R	A	N	I	N	Y	R	K	K	U	K	R
X	C	E	A	O	S	N	S	S	T	L	E	C	L	E	T
L	K	N	I	S	M	T	Z	E	L	N	H	E	B	A	A
W	L	A	M	C	S	R	I	A	E	D	A	H	I	D	I
O	E	L	S	U	S	F	B	I	O	H	O	L	M	S	N
B	N	T	W	M	R	T	C	W	E	E	G	J	G	E	M
R	A	Y	T	I	O	U	N	I	D	A	Y	O	E	L	E
E	M	N	E	O	I	T	R	N	T	O	T	P	H	B	N
P	E	N	F	L	G	S	F	E	U	I	R	C	A	M	T
U	D	E	F	E	N	S	E	R	E	I	A	D	E	U	X
S	U	N	D	A	Y	R	P	X	D	S	P	T	C	F	N

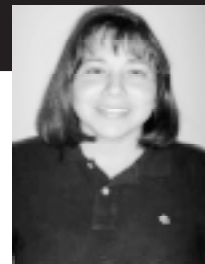
**Yes, as a matter of fact, it is all  
about you, you, you.**



When was the last time you felt like the center of attention?  
When was the last time you stopped by First Bank?

Member FDIC

9155 W. Sam Houston Pkwy. N • Houston, TX 77064 • 281-970-9636



**GRACIE GALVAN**

**Realtor**

**281-894-2810**

**Direct**

*Willowbridge area resident for 10 years.*

**SELLING YOUR HOME**

**- Free Market Analysis**

**BUYING A HOME**

**- Free Home Search Service**

**LOOK NO FURTHER FOR  
GREAT CUSTOMER SERVICE.**



**RE/MAX**

**Professional Group**

281-894-1000

galvangracie@hotmail.com

*Member of HAR/MLS service  
Always working for you!*



## School Anxiety Can Make Kids Sick

*Baylor College of Medicine*

Is school making your child ill? Frequently wanting to stay home "sick" from school could be a sign of school anxiety, says a psychiatrist at Baylor College of Medicine (BCM) in Houston.

"Complaining to the point where the kids do not want to go to school is a telling sign of school anxiety," said Dr. Jacqueline McGregor, assistant professor of psychiatry and behavioral sciences with the Menninger Department of Psychiatry at BCM. "This can be resolved pretty quickly depending on how parents handle it."

According to McGregor, the most important thing is to get these kids back in the classroom.

"The longer kids are out of school, the harder it is for them to go back," said McGregor. "Anxiety can become more ingrained the longer you put it off, but the sooner kids face their fears, the sooner they will overcome the anxiety."

To help a child become more comfortable with school, McGregor suggests the following approaches:

- \* Schedule play dates with other students.
- \* Reward children for their independence.
- \* Role-play anxiety-causing scenarios.
- \* Teach children relaxation techniques.
- \* Speak candidly about problems at school.
- \* Establish daily rituals.

School anxiety often develops from conflicts with teachers or bullies, but according to McGregor, learning, hearing or vision problems also could be culprits.

No matter the source, anxiety can spur physical discomfort including headaches, nausea and vomiting. To be safe, parents should have their child evaluated by a physician if complaints of illness persist, said McGregor.

"If school anxiety continues to impact a child's functioning and enjoyment of life, parents may want to consult with a mental health professional to investigate additional approaches."

## A New Law Changes The Way Checks Clear

Check it out. A new law is changing the way banks clear checks. The legislation-known as the Check Clearing for the 21st Century Act, or Check 21-will benefit consumers through faster check clearing, decreased fraud, less paper and increased security.

The law makes it possible for banks to send-and accept for clearing purposes-digital images of checks electronically. This eliminates the need to physically transport checks between banks.

As an added benefit, Check 21 will reduce uncontrollable delays in transporting checks caused by weather or natural disasters.

According to the American Bankers Association, the law does not eliminate paper checks, nor does it change the way consumers write checks. It simply requires banks and customers to accept paper copies of original checks, called "substitute checks."

A "substitute check" is a paper copy of the original check, including the front, back and all endorsements.

Supporters of this law say that consumers will benefit. Here's why:

- They'll have earlier access to their funds and more convenient access to information online about the status of their checks,
- Check fraud will be reduced because faster processing will mean faster detection and faster resolution of problems,
- Consumers receive special recrediting rights if a problem arises due to a "substitute check."

One caution: with faster processing, consumers must ensure they have enough money in their account to cover their checks.

In addition to the changes brought on by Check 21, a growing number of retailers are now converting paper checks into electronic automated clearinghouse (ACH) payments on the spot. This means that if a consumer has written a check for a purchase, the check is returned immediately at the point of purchase, after it is converted into an ACH payment.

Regular billers, such as utilities or credit card providers, are also converting checks to ACH payments. Once the check is converted, a consumer will not receive a copy of the original. However, the check will be reflected in the consumer's bank statement, which will be accepted as proof of payment.

To learn more, visit the America Bankers Association at [www.aba.com](http://www.aba.com) and click on "Consumer Connection."

Experts say a new law will reduce fraud and paperwork by speeding the check-clearing process.

YOUR SPRINKLER REPAIR SPECIALISTS!

**JB IRRIGATION  
& SERVICES**

LICENSE #7396

RESIDENTIAL & COMMERCIAL

**(281) 744-6909**

NEW SPRINKLER SYSTEMS  
LANDSCAPE CLEAN-UP, MULCH

**\*\*LAWN MAINTENANCE\*\***

**Bashans  
Painting**



Commercial/Residential  
Free Estimates

**281-347-6702**



**281-731-3383**

References Available • Insured • No Payment Until Completion

- Interior & Exterior
- 20 Years Experience
- Hardiplank Installation
- Wood Replacement
- Pressure Washing
- Sheetrock Repair & Texturing
- Cabinet Painting
- Door Refinishing & Replacement
- Wallpaper Removal
- Custom Staining

# Willowbridge - Stonebridge

## Neighborhood Baby-Sitters Available!

Are you in need of baby-sitting? Contact one of the following and help our neighborhood youth earn a little extra money.

Name	Birthday	Phone Number	Parents
Kyle Louderback	7/7/87	281-807-7970	Truman & Dena Louderback
Matthew Louderback	12/29/88	281-807-7970	Truman & Dena Louderback
Carmen Colmenero	14 years old	281-890-3223	Jaime & Juanita Colmenero

## To Submit Articles:

**E-Mail** articles to the following address: [articles@PEELinc.com](mailto:articles@PEELinc.com). Photos may be mailed to P.O. Box 886; Littlefield, TX 79339. Articles must be received by the 15th of the month for the following month's issue. Please specify on the article that it is to be published in the *WillowTalk*.

## Questions, complaints, comments?

Contact Myla at PCMI by e-mail: [myla@pcmi-us.com](mailto:myla@pcmi-us.com) or calling 281-870-0585. To ensure prompt attention and response please make sure you include your full name, address, and a contact number. Please remember that being polite and practical helps. We are all trying to do a good job and keep our neighborhood a pleasant place for residents.

**merry maids®**  
*One less thing to worry about.®*

281-440-4366

**\$25**

OFF  
Your First  
Cleaning.  
New Customers  
Only.

**At no time** will any source be allowed to use the WillowTalk contents, or loan said contents, to others in anyway, shape or form, nor in any media, website, print, film, e-mail, electrostatic copy, fax, or etc. for the purpose of solicitation, commercial use, or any use for profit, political campaigns, or other self amplification, under penalty of law without written or expressed permission from the Willowbridge-Stonebridge Homeowners Association and Peel, Inc. The information in the WillowTalk is exclusively for the private use of Willowbridge-Stonebridge residents only.

# Peel, Inc.

## Printing & Publishing

We currently publish newsletters  
for the following subdivisions:

Berkshire  
Cypress Mill  
Fairfield  
Harvest Bend, The Village  
Lakes on Eldridge  
Lakes on Eldridge North  
Steeplechase  
Summerwood  
Village Creek  
Willowbridge  
Winchester Country  
Wortham Village



*Publishing community newsletters  
in the Houston area since 1991*

To advertise in one of our newsletters, call one of our  
friendly salespeople:

Donna Sommer  
*Wortham Resident*  
Nicole Peel  
*Sales Rep*  
Kelly Peel  
*Sales Rep*  
Jeri Deyoe  
*Fairfield Resident*

832-237-4684  
[dsommer@PEELinc.com](mailto:dsommer@PEELinc.com)  
512-589-3727  
[npeel@PEELinc.com](mailto:npeel@PEELinc.com)  
512-589-5471  
[kelly@PEELinc.com](mailto:kelly@PEELinc.com)  
713-569-5342  
[jdeyoe@PEELinc.com](mailto:jdeyoe@PEELinc.com)

**806-385-6444**

**[www.PEELinc.com](http://www.PEELinc.com)**

## Cypress Assistance Ministries

### Community Buck(s) Donations

Holidays, Special Days and Everyday, we need your support. The following is a brief outline of how you may contribute to Cypress Assistance Ministries. We look forward to your visiting our facilities and hope that we will continue to do God's work together.

### Food Pantry Needs

It is official; we are planning Thanksgiving and Christmas at the ministry. Due to the increased number of families in 2004, our demands will be strained like never before. Turkeys and hams are especially needed, as well as other meat products. Your monetary donations are always welcomed too. Money spent at the Food Bank allows us to buy \$20 for every \$1 spent. If your church, company or special group is looking for a way to celebrate this holiday season, or you need information about our programs, now is the time to start planning. Please give us a call at 281-955-7684.

# HI-TECH MECHANICAL

For your Air Conditioning and Heating needs

**Fall  
Safety Check  
on Gas Furnace\***  
\$64<sup>00</sup>  
\*One System



**TRANE®**

*It's Hard To Stop A Trane.™*

**Comfortmaker®**  
Air Conditioning & Heating

# 713-937-4400

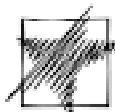
TACL-A011183C

DISCLAIMER: Articles and ads in this newsletter express the opinions of their authors and do not necessarily reflect the opinions of Peel, Inc. or its employees. Peel, Inc. is not responsible for the accuracy of any facts stated in articles submitted by others. The publisher also assumes no responsibility for the advertising content with this publication. All warranties and representations made in the advertising content are solely that of the advertiser and any such claims regarding its content should be taken up with the advertiser.

\* The publisher assumes no liability with regard to its advertisers for misprints or failure to place advertising in this publication except for the actual cost of such advertising.

\* Although every effort is taken to avoid mistakes and/or misprints, the publisher assumes no responsibility for any errors of information or typographical mistakes, except as limited to the cost of advertising as stated above or in the case of misinformation, a printed retraction/correction.

\* Under no circumstances shall the publisher be held liable for incidental or consequential damages, inconvenience, loss of business or services, or any other liabilities from failure to publish, or from failure to publish in a timely manner, except as limited to liabilities stated above.

CY-FAIR  COLLEGE  
A NORTH HARRIS MONTGOMERY COMMUNITY COLLEGE

## Do you like small classes?

So do we!!

Get the classes you want -  
register early!

With the holidays right around the corner, give yourself a break and register early for spring classes. Early registration kicks off November 9. Registering early saves you time in line, provides a better opportunity to get the class you want before it's full and will be less stressful than the last-minute rush in January.



Online registration starts November 9

On-site registration begins November 15

**Two convenient locations to  
serve you:**

**Cy-Fair College**  
9191 Barker Cypress Road  
Cypress, Texas 77433  
281.290.3200

**The Fairbanks Center**  
a satellite location  
14955 Northwest Freeway  
Houston, Texas 77040  
832.782.5000

Online registration available.  
[www.cy-faircollege.com](http://www.cy-faircollege.com)

Affirmative Action/EEO College

# WILLOWBRIDGE MARKET REPORT

Courtesy of "Super Dave"

#1 in Sales in Jones Rd and West Rd Area!

*This market information report is provided to keep you informed of resale market activity in your subdivision.*

	Apr 04	May 04	Jun 04	Jul 04	Aug 04	Sept 04
\$230,000 +	1	0	1	0	1	2
\$210,000-229,999	0	2	3	0	0	0
\$190,000-209,999	1	0	0	2	0	2
\$170,000-189,999	0	0	1	1	0	1
\$150,000-169,999	1	0	0	1	0	1
\$150,000 -	0	0	0	0	0	0
<b>TOTAL</b>	<b>3</b>	<b>2</b>	<b>5</b>	<b>4</b>	<b>1</b>	<b>6</b>
Highest \$/Sq Ft	73.39	64.09	87.29	78.27	64.99	75.11

*This chart represents resale homes that have sold and closed in the past 6 months according to the Houston Multiple Listing Service.*

## #1 Selling Agent In Willowbridge!\*

### David "Super Dave" Flory



- #3 Realtor in Houston (out of 10,000)!\*\*
- Top 1% of Realtors in the U.S.
- Over 450 Homes SOLD in 2003
- Over 96% of David's Listings Result in a Sale

HIGHEST PRICE PER SQ.FT. resale homes sold in Willowbridge: \$90.59

**RE/MAX**  
Professional Group  
281-894-1000

Direct Line: **281-477-0345**

\*According to information taken from the HRR MLS Computer 2001

\*\*Ranked by the Houston Business Journal 20004

## Peel, Inc.

P.O. Box 886  
Littlefield, Texas 79339

Presorted Standard  
U.S. Postage  
**PAID**  
Littlefield, Texas 79339  
Permit #59

◆ Voice 806-385-6444

🖨️ [www.PEELinc.com](http://www.PEELinc.com)