



LAKES

ON ELDRIDGE
NORTH

Volume 4, Issue 3

March 2005

2005 Easter Egg Hunt

We will hold our fourth annual Easter Egg Hunt on Saturday, March 19th at 3PM. This year, the LOEN Ladies Club will be hosting the event. As in past years, we will be collecting 12 (or more) TREAT FILLED plastic Easter Eggs from each participant. There are many egg drop sites this year as our neighborhood has grown considerably (see below). The egg hunt will be done in three different sections: 2 and under, 3 – 5 years old, and 6 – 10 years old. Please label the bag with your eggs with the appropriate age group so that we can hide them accordingly. Please drop eggs off at the egg drop locations between March 13 - 18.

On the day of the event, please try to arrive 5 – 10 minutes early to gather before the hunt. The children get very anxious to start, and, once it starts, there is no turning back. Additionally, please make sure your child only picks up their share of the eggs. There will be some extra eggs provided, but try to stay around 12 until everyone has enough.

If you are interested in helping with the event, please email Jillian Barkley at jbarkley@houston.rr.com.

Egg Drop Sites:

Monterrey Springs
5703 Bolero Point Ct

Arcadia Bend
12011 Arcadia Bend Lane

Sierra Brook
12203 Cabo Blanco Ct

Lago Bend
12414 Lago Bend Lane

Sago Park
6202 Laguna Del Rey Drive

Sandia Cove
5818 Ballina Canyon Lane

Sonora Canyon
6303 Laguna Bay Court
713-896-1713

Saratoga Springs
5907 Mesa Brook Lane

Lakes on Eldridge Swim Team DOLPHIN NEWS



Dolphins, we would like to welcome everyone back for a fun 2005 season. We have the registration dates set for the team and we are also working on our new team website. Check it out: <http://www.loedolphins.org>. Parents Kent Vinall and Kathryn Gauci are organizing the website and doing a great job. We have a wonderful new coach this season, Sabrina Holub. She is presently coaching for Fleet Aquatics at Watkins Elementary. You are welcome to call the Fleet office for times when Sabrina will be coaching to start swimming early or go watch her in action (www.fleetswimming.com).

The swim team is open to children ages 4 to 18 from LOE, LOEN, Twin Lakes, Eldridge Park, and surrounding neighborhoods. Please see the website for registration fee information. We need teens age 15 – 18 to score crucial points for our team. This is a fun way to meet other teens in the neighborhood. Kids in the 15 – 18 age group will have no registration fee.

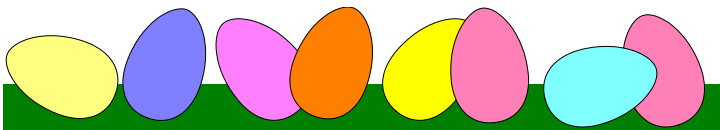
Registration Dates at the Lakes on Eldridge Beach Club

April 3rd 2005 3:00 to 5:00

April 7th 2005 6:30 to 8:30

Please try to attend on of these Registration dates. Returning swimmers are guaranteed a spot if they register by April 3rd. There are a limited number of spots available on the swim team. The start of the season is April 26th. The parents meeting will be held on the evening of the 25th. More information regarding the season will be distributed by email and through the website. Please contact Mary Beth Taylor if you need more information: seahorses61@sbcglobal.net or home 713 983 6434.

**View the Lakes on Eldridge North
Community Newsletter each month
on-line at www.PEELinc.com**



Lakes on Eldridge North

IMPORTANT NUMBERS

VanMor Properties, Inc.	281-493-0668
Fax	281-493-5654
Kate Loeffler, Manager	
Dorinda Obsta (Dori), Administrative Assistant	
Gate Attendant	713-856-6127
Harris Co. Sheriff - (non-emergency)	713-221-6000
Cy-Fair Fire Department - (emergency)	281-466-6161
(non-emergency)	281-550-6663
Poison Control	1-800-764-7661
Texas DPS	713-681-1761
Waste Management	713-695-4055
(trash collection Mondays & Thursdays)	
Aqua Services	713-983-3602
(Service or emergencies 24 hrs)	713-983-3604
Harris County Tax Office	713-224-1919
Reliant Energy	713-207-7777
(give pole # of street light which is out)	
Entex (gas)	713-659-2111
Time Warner Cable	713-462-9000
Houston Chronicle	713-220-7211
Metro Transit Info	713-635-4000
Kirk Elementary	713-849-8250
Truitt Middle School	281-856-1100
Cy-Falls High School	281-856-1000
Newsletter Publisher	
Peel, Inc.	806-385-6444
Adver./Donna Sommer .dsommerPEELinc.com, 832-237-4684	

NEWSLETTER COMMITTEE

Jillian Barkley..... 713-856-5912 (LOEN)

GOT NEWS??? Deadline for submitting articles for the Lakes On Eldridge North Newsletter is the 15th of each month.. Submissions are subject to space limitations and editorial approval. E-mail your information to Jillian Barkley, jbarkley@houston.rr.com, not VanMor.

PERSONAL CLASSIFIED ADS: Deadline for submitting personal classified ads is the 10th of each month for publication in the following month's newsletter. Please contact Jillian Barkley, 713-856-5912, jbarkley@houston.rr.com.

ADS: Deadline for submitting ads is the 10th of each month for publication in the following month's newsletter. Please contact Donna Sommer, 832-237-4684, dsommer@PEELinc.com for information on advertising.

Vanmor Properties, Inc. Contacts

Manager - Kate Loeffler
Administrative Assistant - Dorinda Obsta (Dori)
1505 Highway 6 South, Suite 110; Houston, Texas 77077
Phone - 281-493-0668 • Facsimile - 281-493-5654

2005 Assessment Statements:

Due Date Of Jan. 31, 2005

If you did not receive your 2005 assessment statement from VanMor Properties, please call 281-493-0668. The 2005 assessment fee was billed in November 2004, due on January 1, 2005 and late if received after January 31.

If you were unable to submit your assessment payment, now is the time to call VanMor Properties and request payment arrangements.

We can not stress enough how important it is to pay your annual assessment fee in a timely manner. Interest and collection fees apply to all late payments, and, in May of each year, delinquent accounts are forwarded to the HOA attorney for collection.

Please help us with our goal of working closely with all residents to achieve a 100% collection rate without incurring additional collection expenses.

For up-to-date announcements and information
check our neighborhood website:
WWW.LOENHOA.COM

First Class FREE... No GIMMICKS...NO JOINING FEES...
and if you like us... ONE MONTH FREE...
with purchase of our Easy Fitness Ticket*



It shows in your smile.
(And in other places.)

When you love your workout, results come easy. That's why Jazzercise blends aerobics, yoga, pilates, and kickboxing movements into fun dance routines set to fresh new music. All fitness levels welcome.



Cardio



Strength



Stretch

**NEW LOCATION
NOW OPEN**

Northwest Jazzercise Center
12603 Louetta @ N. Eldridge

Bear Creek Copperfield Jazzercise Center
15420 FM 529 @ Hwy. 6

Celebrating 25 years in the area.

Ranked #1 Franchise of 6000 worldwide

*Offer good for new or returning students who haven't attended in 6 months - Exp 4/15/05

281-855-FITT (3488) • www.jazzercise.com

For information on class schedule
at either location

jazzercise
it shows.

We are Getting the

Word Out on...

LAKEs

ON ELDRIDGE NORTH

SPRING IS THE ONE MOST ACTIVE TIME IN REAL ESTATE!

Let us know if you are contemplating a move
Here are some tips to get your garden ready for Spring

- Prepare beds for planting flowers.
- Check with your local county agent for the average last killing freeze date for your area. Killing freezes can occur after this date.
- Prune evergreens and summer flowering trees and shrubs in early March.
- Prune spring flowering trees and shrubs as soon as they finish blooming.
- Select and order caladium bulbs as well as geranium and coleus plants for late April and early May planting. Do not plant caladiums until soil temperature reaches 70 E
- As camellia and azalea plants finish blooming, fertilize them with three pounds of azalea-camellia fertilizer.
Start hanging baskets of petunias and other annuals for another dimension in landscape color.

Beware of closeout sales on bare-root trees and shrubs.
The chance of survival is rather low on bare-root plants
this late in the season.

**Relocating? Moving Up? Scaling Down?
Call Ann Knoche and Maureen Clemons**

281.493.3880

Ext. 1911

Ext. 1904



heritagetexas.com



Ann Knoche
annpk@heritagetexas.com

Maureen Clemons
mclemons@heritagetexas.com

Lakes on Eldridge North

Quest To Be Our Best.....Kirk Elementary 2004-2005

It's been far too long since we updated the community on the happenings at the little school house on Tanner Road, so get ready to do some reading. And get ready to share our excitement over what is shaping up to be one of our best years ever.

Following a wonderful holiday, our Kirk Tigers were back in action, broadening their horizons and exercising their minds through challenging school work and an array of extracurricular activities. Foremost on the list, of course, was our continued focus on building character. Our amazing students began the first six weeks of 2005 by turning their attention to developing the trait of "cooperation." Our Tigers learned that working together moves everyone forward. No one person is a whole chain, but each of us is a link. And if you take away just one, the chain is broken. Cooperation is at the heart of good relationships, and it is essential to teamwork. Many of our students were recognized for demonstrating cooperation during the six weeks, and they now have moved on to a character trait that is considered one of the most important in leading a fulfilling life – honesty.

Being an honest person involves not only telling the truth to other people but also being truthful with yourself. It is said that your character is who you are when no one else is around, and it often is times where we are alone that our honesty is put to the test. We want our Kirk Tigers to be proud of being truthful and to put that virtue into practice. For example, a piece of jewelry found on the playground does not belong

to the first finder...it belongs to whomever lost it. This six-weeks, you can join our Kirk Tigers in demonstrating integrity and honesty in all that we do.

On the academic front, the spotlight in January shone on all Kirk Elementary students during the Writing Wonderland. Our children created and collected their own stories and shared them with parents and faculty while enjoying yummy treats fit for the weather. They also participated in the annual Spelling Bee, with top honors going to Hannah Powers and Runner Up Tre' Figgs. One of our stellar faculty members, Amy Price, also was recognized for her outstanding contributions to special-needs children through receiving the KIDS FIRST Award from the Special Education Parent Advisory Committee. Congratulations Ms. Price!

Toward the end of January, we turned our attention to Asian American Pride. Students learned about the folk tales surrounding the lunar calendar, leading up to the celebration of the Chinese and Vietnamese New Year on February 9, complete with a dragon dance! First and Third Grades were treated to a visit by author Joe Hays, an award-winning storyteller from Santa Fe, New Mexico, and the entire school is gearing up for an exciting end-of-the-year research project, where each grade will begin a quest to use their own resources and creativity to develop their own product! It's sure to be challenging and fun.

(Continued on Page 5)

YARDMASTERS, INC.

"Where Beautiful Lawns Begin"

281-469-5158



15420 Telge Road
www.yardmastersinc.com



LANDSCAPING

- Design & Installation
- Trees, Shrubs, Flowers
- Mulch, Soil, Sod
- Root Barrier
- Drainage Systems
- Landscape Lighting
- Flagstone Borders
- Flagstone Walkways



LAWN MAINTENANCE

- Aeration
- Fertilization
- Fire Ant Control (TPCL 9651)
- Bed Cleaning
- Hedge Trimming
- Full Service Accounts
- Weekly Yard Service



SPRINKLER SYSTEMS - LI# 5455

SERVING NW
HOUSTON SINCE 1990



FINANCING AVAILABLE
INSURED FOR YOUR
PROTECTION

SPECIAL

**Aeration
\$65.00**

• Corners, Oversized Lots, Extra

SPECIAL

\$185.00
2 Yds. Mulch +
3 Flats Flowers
(Bed Cleaning Extra)

SPECIAL

**0% Interest
for 6 months**
Residential Landscape
Finance Program
(For Qualified Homeowners)

LEGAL SERVICES

Christine K. Lincoln

Attorney at Law



- Family Law
- Wills
- Business Law
- General Civil Practice

The Lincoln Law Firm PLLC

12841 Jones Road, Suite 207

Houston, TX 77070

(281) 970-9005

Not certified by the Texas Board of Legal Specialization

Kirk Elementary - (Continued from Page 4)

As for extracurricular activities, our Kirk Tigers are entrenched in a number of programs, some of which are familiar favorites, while others are new for this year. We have many students participating in Learning Safari; Mad Science; Art After School; Boy and Girl Scouts; and the Good News Club. Also, each grade has taken (or plans to take) a Field Trip to wonderful places like the Houston Zoo; the Children's Museum; Houston's Medical Museum of Science; Houston Natural Science Museum; Nature Trails; the Ropes Course; and Exchange City. Our students also enjoyed a sweet Valentine's Day exchange and have continued to enjoy Skate Nights and Pizza Nights at CiCi's and Dominoes.

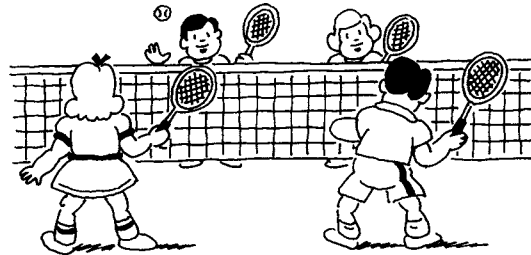
On a final, serious note, our Tigers are in the midst of taking the TAKS tests. Some are complete, but others are yet to come, and our Kirk Family is pulling together to encourage and support every student in this endeavor. Kirk has performed well over the past few years, and we look forward to another successful semester.

To say the least, we are busy. But our Kirk Tigers are strong and confident, and they are supported by an active group of parents and faculty. We also have the invaluable support of our friends and business partners, who continue to help make Kirk a multi-dimensional place of learning, fellowship, and community. Go Tigers!

Kirk Elementary Parent Information Night

If your child will be a new student at Kirk next year, please join us for a new parent information night on April 4th at 6:30pm in the cafeteria. We will discuss the school, give a tour, and have a question and answer session.

Kindergarten registration at Kirk Elementary is April 6th from 9:00am – 11:00am, 1:00pm – 3:00pm, and 5:00pm – 7:00pm.



Loen Ladies Club Tennis

I'm trying to get a list together of those residents wanting to play tennis for fun in the neighborhood. If you are interested please call Jean Oldfield at (713)466-6818, cell (713)882-1795, or e-mail me at ofield@sbcglobal.net.



KAY HORSCH

LOE Resident & Realtor

Office: (713) 722-6867

Cell: (713) 703-8313

www.kayhorsch.com



Coldwell Banker

United, Realtors®

Spring

IS IN THE AIR!

*Spring is prime selling season.
Qualified buyers are out looking.*

If you or anyone you know are thinking of
buying or selling, now is a great time!

For a FREE market analysis, call me!

Lakes on Eldridge North

Thyme Out for Gardening: Poisonous Plants

Last month, we started talking about gardening for wildlife, and, while it's one of my favorite gardening subjects, I'm going to postpone Part II of that series until next month. In February, I saw a story on poisonous plants during the evening news, and I thought the subject needed further discussion, particularly with folks gearing up for spring landscape activities. The news report I saw related the sad story of a couple of dogs that became very ill (one died) after chewing on sago palm seeds. The reporter informed viewers about the toxicity of sago palms, oleanders, and azaleas, and warned viewers to keep their children and pets away from these plants.

If you're an experienced gardener, this news report didn't come as a surprise, and I think most people know that some plants are toxic. Most people know, for example, that poison ivy can cause skin rashes, and that eating certain mushrooms can be deadly. But what many folks don't realize, and what the news story underscores, is that toxic plants aren't unusual – they're all around us. Many of our favorite and most common indoor and landscape plants have some level of toxicity. Even edible plants can be toxic in certain situations: some can cause an allergic reaction in sensitive individuals, and some parts of fruit, vegetable and herb plants can be poisonous to people and/or animals. Did you know, for example, that grapes (and raisins) can be harmful to dogs? Did you know that the only part of a tomato plant that is not toxic is the ripening fruit? Because it's almost impossible to have a completely "safe" landscape, it's important to get to know the plants you already have around your home and those you're planning to install. I think everyone should be informed

about the plants in and around their homes, but it's especially important for those who have children or pets that play in the yard. Take the time to research your plants using reliable references. Consult gardening and/or medical reference books by well-known authors, university publications, and poison control center literature. The ASPCA has a list of poisonous plants through their Animal Poison Control Center.

Find out as much as you can about a plant's possible toxicity. Find out what parts of the plant are poisonous, and what the effects are. If a plant can cause a skin rash in a sensitive individual, Rue, for example, you may decide to leave it out of the garden entirely, or perhaps plant it away from foot traffic. If the plant or plant part is poisonous only when eaten, how much must be ingested to cause a problem? What is the best antidote or treatment if someone is poisoned? It's also good to know whether the plant is poisonous for cats, dogs, and/or humans. Lilies, for example, are particularly dangerous for cats.

Once you're well informed about the toxicity of particular plants, you can decide how to manage your plant collection. If you have small children or pets that like to nibble on anything and everything, you'll want to keep the dangerous plants out of the house or backyard. Please teach your children at an early age that they should never put any part of a plant in their mouths unless a responsible adult has given their approval!

March gardening notes: As long as you keep an eye out for a rare late- in-the-season frost, you can plant tomatoes, peppers, cucumbers and squash this month. Cover the plants if a frost threatens. You might
(Continued on Page 7)



TANYA COLLINS
REALTOR®

Sales & Marketing Specialist

Direct: 713-703-1156
Home Office: 713-466-3259

Office: 281-890-4024
collinst@garygreene.com
www.GaryGreene.com

**We sell extraordinary homes
for extraordinary people.**



Like you.

Ready to sell your home?

**Our exclusive, one-of-a-kind marketing programs go beyond
traditional methods. They'll help position your home to be
sold FAST, at the BEST PRICE with the LEAST HASSLE!**

For all the details, call me today!

Extraordinary SERVICE. Extraordinary RESULTS.

Thyme Out - (Continued from Page 6)

want to start moving houseplants and other container tropicals outside on warmer days, but be sure and protect them from the sun; they need to be conditioned gradually to stronger light after a winter indoors or the foliage will burn. You can also plant a wide variety of herbs this month, although it's best to wait until the weather really warms up to start planting basil. Perennials can also be planted this month. Violas planted in March will probably bloom through May, but you should wait until the weather is much warmer to plant caladiums and warm season annuals such as zinnias and vinca.

If your St. Augustine has begun to "green-up" and you've cut real grass twice, then you can fertilize your lawn this month. I prefer a general purpose granular organic fertilizer, or a simple top-dressing of ¼ inch of compost over the lawn. If you prefer, you can use a complete slow release chemical fertilizer with a 3-1-2 or 4-1-2 nutrient ratio. Consider having your soil tested to see what nutrients you really need – this will prevent the pollution of our waterways from excess nutrient run off. Even if your lawn isn't ready for fertilizer, go ahead and fertilize your flowerbeds early in March using an organic or chemical fertilizer. You can use the same fertilizer that you will be using on the lawn. Be sure and read the package labels for recommended fertilization rates and application precautions and avoid sprinkling fertilizer over hard surfaces such as sidewalks and patios.

If anyone missed the early start of the Tomato and Pepper Sale on February 26, I apologize for having the incorrect starting time in last month's column. I found out that the time was being moved up after our newsletter deadline. All Master Gardener plant sales for the remainder of the year will start at 9:00 a.m., with an informational symposium starting at 8:00 a.m. By attending the symposium, you'll get into the sales a few minutes before everyone else. With that in mind, keep Saturday April 23rd open for the Master Gardener Spring Plant Sale. There will be a special article in next month's newsletter by local author Karen Breneman with more details. Until then, trust me when I say that, if you enjoy gardening, you won't want to miss this sale!

Another "don't miss" sale is March Mart at Mercer Arboretum on March 18 and 19, 2005, from 8 a.m. to 4 p.m. For those who may not be familiar with it, Mercer Arboretum is a wonderful garden/park facility located a little north of Bush Intercontinental Airport. This sale features an amazing selection of plants suitable for our area, many of which you won't find anywhere else. March Mart is quite an experience, so put on your tennis shoes, go early, bring a wagon or a cart (they often run out of the loaner wagons), and be prepared to shop. Call 281-443-8731 for directions and more information.

If you want to know more about landscaping before you start buying plants, then sign up for the Harris County Outreach Education Committee's class, the Basics of Residential Horticulture, Part 1. The all day class will be held at the Bear Creek Extension Auditorium on Saturday April 2, 2005. The cost is \$50.00, which includes lunch. From many local experts, you'll learn about basic botany, lawn care, trees and plants for Houston, vegetable gardening and much more.

The Education Committee is also offering two Floral Design Workshops on March 16th. The cost is \$50.00, including flowers and containers, for either the morning or evening session. You'll create one St. Patrick's Day arrangement and one Easter arrangement. Because of the hands-on nature of the workshop, class size is limited. For registration information on either of these Outreach Education classes, call 281-855-5600.

Until next month, happy gardening!

By Lisa M. Rawl, Harris County Master Gardener
lmrjkk@earthlink.net

Aesthetic Pool & Patio, Inc.



Custom Pool Construction

(receive salt chlorine system free with new pool purchase, mention this ad when calling)

Pool Renovations: *Plaster, Tile, Coping, Decking, Waterfall additions, Equipment Replacement, Salt Chlorination, Pool Automation Systems.*

Loop-Loc Safety Covers & Baby-Loc Fencing

Custom Stone Fire Pits

Custom Barbeque Islands

Mosquito Misting Systems

www.aestheticpools.com

INSURED FOR
YOUR PROTECTION



*Lakes on Eldridge North Resident
(w/ 2 show pools)*

Call for Free Estimate...
(713) 875-3838

Lakes on Eldridge North

“Family Open House”

On April 9th, you and your family are invited to Pine Forest Country Club to a Family Open House from 1:00 pm till 5:00 pm.

What can you do at Family Open House?

- Play golf
- Play Tennis
- Children can enjoy moonwalk and playground area
- Complementary refreshments will be provided for your enjoyment
- Attend tennis clinic with the resident pro at 2:30

This event is exclusively for Lakes on Eldridge and Lakes on Eldridge North residents hosted by LOE and Pine Forest and is at no charge to you. Call today to make your reservations to check out this breathtakingly beautiful facility.

RSVP to Midge Copeland
(281) 463-0900

(You must mention that you are a LOE or LOEN resident)

This is a private club with dress code:

no denim, collared shirt and bermuda shorts required.



Since 1977

The Branch School

3 years-5th grade

Enroll in the month of **March** and receive

10% OFF TUITION*

For new student enrollment in the 2005-2006 school year.*

“You’ll find that an excellent Branch School education is very affordable for your child.”

- **Safe, Nurturing Preschool** – Our teachers are degreed and teach a developmentally appropriate preschool curriculum.
- **Solid Academics** – 33% of our elementary students made National Kumon Math Honor Roll.
- **Creative Projects** – We placed third this year at the Odyssey of the Mind World Finals.
- **Low Student Teacher Ratio** – 10 children per class in preschool; 12-16 children in elementary.

Call for a tour today!

*See the school for more details and restrictions.

OPEN HOUSE

March 15, 9-2 pm
April 12, 9-2 pm

Art and Soul Gala

Friday, April 15 6-9 pm
Join us for desserts, music and art!

The Branch School

1424 Sherwood Forest
Houston, TX 77043

713.465.0288
www.TheBranchSchool.org



SK Designs
Custom Sewing for the Home
713-697-4110
www.picturetrail.com/skdesigns

**Custom window treatments,
bedding, tableskirts, blinds,
shutters, shades and more!**

TRUNK SHOWS

(Many draperies, valances,
fabrics, pleats & details shown)

CUSTOM FABRIC

(create patterns in your colors,
even use your child's artwork!)

STYLE RENDERINGS ON YOUR WINDOWS



See your treatment style on your
own windows to help make a decision!

CREATIVE



Child's tea set saucers are used as finials
on this scalloped box pleat valance



Susan Kostecky, owner
of SK Designs, has professionally designed and
fabricated custom window treatments and bedding
since 1995. Throughout the greater Houston area,
Susan assists clients in selecting fabrics, trims and
styles for their homes, including many featured
on area home tours.

With commercial equipment and the
latest methods and styles, SK Designs
designs, fabricates and professionally installs
your treatments, using your
fabric or ours.

- ✂ Window Fashions Certified Professional
- ✂ Published in worldwide trade magazine
- ✂ Accounts with all major fabric vendors



SK DESIGNS
Custom Sewing for the Home
713/697-4110
www.picturetrail.com/skdesigns
skdesigns@mindspring.com

Lakes on Eldridge North

WAIT! Don't Roll That 401k Just Yet....

by Kurt Box & Paul Palmer

To all retirees or recent job changers thinking about rolling their old 401k money out to a rollover IRA pay close attention; you may be able to save a whole lot in taxes!! How? By using what is called the Net Unrealized Appreciation (NUA) strategy. Let's review:

1. What is the NUA strategy?

- It is a strategy that utilizes special tax treatment to help retirement plan participants who receive a lump-sum distribution that includes company stock to lower their taxes as low as 15% on that distribution. It is a means by which to trade ordinary income taxation on a portion of retirement assets for long-term capital gains treatment.

2. Who can benefit from the strategy?

- Anyone holding employer securities (i.e. stock) in a qualified retirement plan (such as Employee Stock Ownership Plans (ESOPs), 401ks, cash balance, profit sharing, etc.). **Note: This strategy especially benefits those with highly appreciated company stock.**

3. How does the NUA strategy work?

- Assets in your employer-sponsored plan, including company stock, accumulate on a tax-deferred basis. Once you begin taking distributions from the employer sponsored plan or the rollover IRA set up to roll the plan into, you generally must pay ordinary income tax on the current market value of the assets distributed in-kind, plus any cash distributed (if you sell the mutual fund,

stock, etc. before distributing it from the plan).

- However, assuming your plan allows it, using the NUA strategy allows you to pay the capital gains tax rate rather than the ordinary income tax rate on the portion of your lump-sum distribution consisting of appreciated company stock.
 - Under the NUA strategy, the original basis (i.e. contributions to the plan) is immediately taxed as ordinary income. It is the remaining value, the Net Unrealized Appreciation that is taxed at long-term capital gains rates.
 - A lump-sum distribution is a payout within one taxable year of your entire balance from all of your qualified plans of one kind (e.g., pension, profit-sharing, stock bonus) from a particular employer.
4. How to execute the NUA strategy:

(Continued on Page 11)

Business Classified Ads

Business Classifieds are \$45.00. Please contact Donna Sommer, djsommer@aol.com, 832-237-4684.



GRACE *School*

10219 Ella Lee Lane
Houston, TX 77042
713-782-4421
www.graceschool.org



Preparing students for college preparatory work in high school.

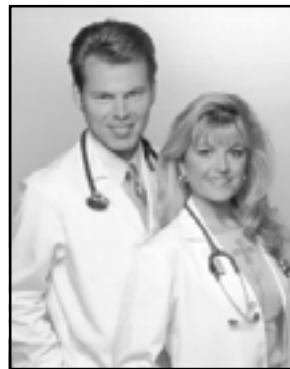
Providing a wide range of co-curricular programs and activities for ages infant through eighth grade.

Emphasizing character formation, responsibility and the pursuit of excellence.

National Blue Ribbon
School of Excellence

Accredited by the Southern Association of Colleges and Schools and the National Association for the Education of Young Children.

Member of National Association of Independent Schools,
Texas Association of Non-Public Schools,
Houston Association of Public Schools and the School and Student Service for Financial Aid.



COPPERFIELD FAMILY MEDICINE

Trey Hillert, M.D.
Carlotta Hillert, M.D.

*Specialists in
Family Medicine*

- Preventive & Diagnostic Exams • Annual Check ups
- Traditional Family Medical Care • Smoking Cessation
- E.D. (Impotence) • Weight Loss Counseling
- General Skin Care • Acne Treatment • Spider Vein Treatment
- Pre-employment, School & Sports Physicals

"Accepting New Patients... TODAY"

For more information on our office,
please visit our new website at

www.DoctorHillert.YourMD.com

15498 F.M. 529 @ Highway 6
Houston, Texas 77095
281-345-4747

Lakes on Eldridge North

401k - (Continued from Page 10)

- Request that your retirement plan administrator distribute the shares of your employer stock to a taxable account. At that time, you must pay ordinary income tax on the average cost of the stock. Note: The original basis is subject to a 10% penalty unless you are age 55 or over and separated from employer service.
- The average cost, (also referred to as the cost basis), is the average of the individual values of employer stock when each share was contributed to the plan (either by you or the company).
- You are not required to pay taxes on the NUA at the time of distribution to your personal account, but you must pay capital gains taxes on that amount when you sell the shares.
- If you decide not to sell the stock immediately upon distribution to your personal account, the share price may change between the time you take the distribution and the time you sell the shares. If the price increases, that additional appreciation is taxed either as a long-term or a short-term capital gain, depending on how long you hold the shares after distribution (i.e. 1 year or longer for long-term capital gains).
- Other pension assets, including mutual funds (or the cash proceeds from their sale) may be rolled over into a traditional IRA to maintain tax-deferred growth.

Many times, the easiest way to explain a complex strategy is to give a specific example. For instance, assume in the following the individual

in question is a 60 year old retiring corporate executive with qualified plan employer stock with a current value of \$1 million and a basis of \$75,000. The executive is in the top marginal tax bracket (35%) and is expected to stay in the same bracket in retirement. The executive's other taxable portfolios are fully diversified.

1. **Scenario 1:** Roll stock over into an IRA and hold for 10 years with an 8% growth rate.
2. **Scenario 2:** Elect NUA and hold the stock in a personal account with an 8% growth rate. (Note: Assumes 15% long-term capital gains and dividend tax rates enacted in 2003 remain in force and that the basis is not subject to the 10% premature distribution penalty discussed above.)

(Continued on Page 12)



LI #7019

South-West Sprinkler Company 281-861-6171

Installation & Repair
N.W. #1 Irrigation Company

Let me show you how to **SAVE money and water!!**

www.southwestsprinkler.com Robbie Moore

BBB Gold Star Award 2002- 2003, 2004

Owner & NW Resident for 20+ years

Val quit dragging that hose!

Visa

JARRAR & Company

Your Neighborhood PLUMBING Company
Since 1978



Reliable Pricing, No Surprises

832-467-4750
www.jarrarandcompany.com

Spring SPECIAL!

\$25 OFF
ANY SERVICE
Expires 06/15/05
Cannot combine coupons

Services

LICENSED
INSURED
BONDED



Our Services Include Full Line of:

Water Heaters • Water Softeners • Faucets • Water Filters
Disposals • Water Leaks • Kitchen & Bathroom Remodeling
Sewer Camera • Pipe Inspection • Pressure Jetting
Sewer Cleaning • Repair & Sales • Shower Leak • Shower Pan

Lakes on Eldridge North

401k - (Continued from Page 11)

Scenario 1		Scenario 2		Scenario 3	
Current value of stock	\$1,000,000	Current value of stock	\$1,000,000	Current value of stock	\$1,000,000
Basis (original contribution)	\$75,000	Basis (original contribution)	\$75,000	Basis (original contribution)	\$75,000
Income tax on basis @ 35%		Income tax on basis @ 35%	(\$26,250)	Income tax on basis @ 35%	(\$26,250)
Future value in 10 yrs. @8%	\$2,158,925	Net to hold in personal account	\$973,750	Net unrealized appreciation	\$973,750
Income tax @ 35%	(\$755,624)	Future value in 10 yrs. @8%	\$2,102,253	Capital gains tax @ 15%	(\$146,063)
Net after tax	\$1,403,301	Capital gains tax @ 15%	(\$315,338)	Net to reinvest	\$827,688
		Net after tax	\$1,786,915	Future value in 10 yrs. @6.2% after-tax	\$1,510,468
		Incremental benefit of Scenario 1	\$383,614	Future taxes	\$0
				Net after tax	\$1,510,468
				Incremental benefit of Scenario 1	\$107,167

3. Scenario 3: Elect NUA, sell the stock immediately and reinvest in a mutual fund with a total growth rate of 8% consisting of 25% qualified dividends taxed at 15%, 37.5% long-term capital gains taxed at 15% and 37.5% short-term capital gains taxed at 35%. (Note: Assumes 15% long-term capital gains and dividend tax rates enacted in 2003 remain in force and that the basis is not subject to the 10% premature distribution penalty discussed above.)

Recap:

- Scenario 1: Roll stock over into IRA
- Scenario 2: Elect NUA; hold stock for 10 years.
Incremental benefit: \$383,614
- Scenario 3: Elect NUA – sell stock; reinvest proceeds in diversified portfolio.

Incremental benefit: \$107,167

Other Issues to Consider

If you decide to place your company stock (Scenario 1) or the proceeds from the sale of the company stock (Scenario 3) in a taxable account remember:

1. You must elect lump sum, in-kind distribution from the qualified plan and the total distribution of all assets must occur in a single calendar year.
2. Assets outside a qualified employer plan or IRA may have less protection from creditors' claims.
3. The stock price could decline or tax rates could change, defeating the tax-saving benefits of the NUA strategy.

(Continued on Page 13)

A.P.C. Pest Control

**Guaranteed 20 minute
on time appointments**

for all Lakes on Eldridge North residents!

It's Almost TERMITE Season...

Call for a FREE Preventative Inspection!

A Pest Control Co., Ltd.
is a Locally Owned
Family Business Serving
Lakes on Eldridge North
Residents with Pride.



Call now for a free estimate!

\$20 OFF

Your first pest
control service.
Call for details.

\$25 to \$100 OFF

Any Termite
Control Service
Call for details.

281-213-3909

Licensed - Bonded - Insured



**Yorkshire
Academy**

Learning for a Lifetime



**Registering for
2005/2006
School Year**

*Come visit and see why 15 students
from your neighborhood
choose to attend Yorkshire Academy!*

Brand New State-of-the-Art Facility!

Elementary • Preschool • MDO

14120 Memorial (1 blk west of Kirkwood)

281-531-6088

Fully Accredited
www.yorkshire-academy.com

Est. 1984
email:yorkaca@swbell.net

401k - (Continued from Page 12)

4. The NUA strategy is less beneficial if your tax rate is likely to decline in retirement.
5. State income taxes also should be considered.
6. Effect on beneficiaries: The NUA strategy can benefit your beneficiaries if you hold the stock in a taxable account and it appreciates before your death. When your beneficiaries sell the stock they inherit, they will owe long-term capital gains tax on the unrealized appreciation (the unrealized appreciation in the 3 scenarios is \$925,000 (\$1,000,000 - \$75,000). This is the same tax you would owe if you sold the shares yourself.
7. Effect on beneficiaries continued: Any additional appreciation between the date of distribution and the date of your death is never taxed. That amount is treated as a "step-up" in cost basis for your beneficiaries. In Scenario 2 this amounts to \$1,128,503 (\$2,102,253 - \$973,750) that is never taxed!!!

In summary, although the NUA strategy is not well known or understood by most financial advisors or the general public, it can be a powerful tax savings tool for both yourself and your beneficiaries. Remember though, you should never let the tax tail wag the investment dog; diversification in your portfolio is critical.

This information is general in nature and should not be construed as tax advice. Please keep in mind that neither InterSecurities nor its Representatives may offer tax advice. Please consult your tax advisor for guidance on your particular situation.



START SOMETHING.

Take a class. Go for a degree. Earn a certification. Learn a new language. You can begin all this and more by visiting www.cy-faircollege.com and checking out our Course Catalog and Summer 2005 Schedule.

Summer and mini-term online and phone registration begins March 8.

Onsite registration begins March 14



Visit us today.

Cy-Fair College • 9191 Barker Cypress Road • Cypress, Texas 77433 • 281.290.3200
Fairbanks Center • 14955 Northwest Freeway • Houston, Texas 77040 • 832.782.5000

affirmative action/eeo college

Fluoride Level Change

The fluoride level in our drinking water has changed to from 0.2 ppm to 0.4 ppm. The ideal amount is 0.7ppm for older children and 0.3 ppm for infants. Contact your pediatrician or dentist to see if fluoride supplementation is necessary.

Cheryl A. May
Certified Public Accountant
6143 Sienna Arbor Lane
Houston, TX 77041-6038

Office: 713-466-1480
Fax: 713-983-0881

Mobile: 713-705-2345
E-Mail: CAMayCPA@aol.com

We Create Beautiful Smiles!



S.M. Shirazi, D.D.S.
Cosmetic & Family Dentistry

713-466-3700

5630 North Eldridge

- ★ 12+ years in practice
- ★ New patients welcome
- ★ Emergencies seen same day
- ★ Payment plans available
- ★ Most insurance accepted
- ★ Movies available during treatment

**New Patient
Special**

Exam, X-Ray, Cleaning

\$100

not applicable for insurance patients

**Bleaching
Special**

(Reg. \$375)

\$200

good thru 07/31/05

Lakes on Eldridge North

Cy-Fair College Perspective

Check Out the Center for the Arts in March

In the Gallery March 3 to March 30, the college hosts a Cy-Fair ISD High School Student Exhibition. In the Black Box Theatre March 3 to April 10, "Tony and Tina's Wedding" provides a unique theatrical experience with audience participation. In the Main Stage Theater March 9, a Strings and Drums concert is set. In the Recital Hall March 22, "Songs of Spring" features vocal and piano talent from Cy-Fair College and North Harris College. For performance information, call 281-290-5273.

Don't Miss Out on L.I.F.E. at Cy-Fair College

L.I.F.E at Cy-Fair College includes the lost art of candle making March 2; making inexpensive gifts in a jar March 9; a live Irish band March 16; landscaping campus tour March 23 and benefits of massage March 30. **These weekly programs are free and held** Wednesdays at 10 a.m. in the Cy-Fair College Branch Library (Room 131.) **Call the library at 281-290-3213 for L.I.F.E. program information, or check the library web page online at cy-faircollege.com/library.**

Foreign Films and Spring Break Films

Among some of the March features of the Cy-Fair College's Spring Film Series are two foreign films including "The Barbarian Invasions" (French Canadian) and "Hey Ram" (Indian- food will be served.) Two films for Cy-Fair ISD youth on Spring Break include "Arsenic and Old Lace" and "The Dark Crystal." Professors and student

organizations host the films and discussions at Barker Cypress campus and Fairbanks Center at no charge to students or the community. The film series, which is part of an effort to promote cultural activities on campus, is also offered as a free continuing education class. Go online at: http://faculty.nhmccd.edu/robobrien/Film_Series.html for information.

Homework Help for Elementary Students

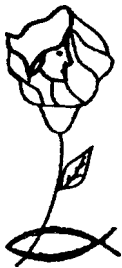
Free tutoring provided through Cy-Fair College's Teacher Certification Program is available in half hour increments from 4:30 p.m. to 6 p.m. Mondays through Wednesdays by sign-up only in the Kids' Corner of the Cy-Fair College Branch Library.. This volunteer program is under development, and volunteers have not been confirmed for every slot on each day. Parents will receive a call if a tutor is not available for their chosen time slot. Call 281-290-3211 for information.

Free Tax Help Available

Free tax help will be available through April 14 at the Cy-Fair College Branch Library, Room 131. AARP Tax-Aide volunteers will be on site noon to 4 p.m. Wednesdays and Thursdays to assist taxpayers with middle- to low-income, particularly those ages 60 and older. For AARP Tax-Aide information, go to www.aarp.org/taxaide. For Cy-Fair College information, go to www.cy-faircollege.com/library.

(Continued on Page 15)

SPECIAL MAID SERVICES



Residential & Commercial Cleaning
Supplies & Equipment Furnished
Bonded

SAVE \$20!

New customers receive
\$5 OFF their first four cleanings.

281-589-2042

Bashans Painting



**Commercial/Residential
Free Estimates**

281-347-6702



281-731-3383 cell

References Available • Insured • No Payment Until Completion

- Interior & Exterior
- 20 Years Experience
- Hardiplank Installation
- Wood Replacement
- Pressure Washing
- Sheetrock Repair & Texturing
- Cabinet Painting
- Door Refinishing & Replacement
- Wallpaper Removal
- Custom Staining

**the
Pool Nanny**

**Weekly & Vacation
Swimming Pool
Maintenance**

281-858-4868



Decks
Shade Arbors
Texas Porches
Patios
Outdoor Kitchens
Flagstone
Waterfalls
Swimming Pools

281-858-9696

Extensive Online Photo Album

www.customoutdoors.com

Let Us Bring Your Outdoors To Life!

Cy-Fair College - (Continued from Page 14)

Help Create a Community Garden

The Community Garden at Cy-Fair College has completed the first 4' x 40' raised bed, which is anchored by a lime tree; has border planting of lettuce, spinach, carrot and radish; and plans to add potatoes to the center. Materials for additional beds have been acquired with plans to construct one a week, weather-permitting. Produce from these first beds will be donated to local food pantries. Join this group Saturdays at 9 a.m. in the garden (west of the library) or in the Cy-ber Café when raining. Enrollment in the "Community Gardening" CE course is required for membership, but volunteers and the "just curious" are always welcome. Old muddy shoes and work gloves are recommended. For information, contact Rob Coyle at robert.a.coyle@nhmccd.edu or visit <http://faculty.nhmccd.edu/rocoyle/Garden.htm>.

Please support the businesses that advertise in your newsletter. Their advertising dollars make it possible to provide your newsletter to all the residents in your subdivision at no charge. No homeowners association dollars were used to produce this newsletter.

TANNER LAKES ANIMAL CLINIC In Your Neighborhood!



*Only The Best
For Your Best Friend*

- ✓ Ultrasound
- ✓ Telemedicine
- ✓ Blood Pressures
- ✓ Radiology (x-rays)
- ✓ Tonopen (glaucoma)
- ✓ Dental cleanings
- ✓ Blood Pressures

Kenneth Malinowski, D.V.M.

- Dental Grading at no charge! Dental Estimates!
- Ask about our Shelter Adoption Package at no charge!
- Come by anytime for a tour and meet Dr. Malinowski!

Office Hours

Mon, Wed, Fri 7am - 6pm
Tues, Thurs 7am - 7pm
Saturdays 8am - 1pm
713/937-4484

DONNA SOMMER
Sales Representative

Res. 832-237-4684

Mob. 281-788-2078

Fax 281-477-7311

dsommer@PEELinc.com

Peel, Inc.

Printing and Publishing

P.O. Box 886
200 E. Waylon Jennings Blvd.
Littlefield, Texas 79339

PH. 888-687-6444

Fax 806-385-5234

**Know why we use
Vacs that can
capture 99% of
all dust and
allergens?**



And what does this mean for you?

It means more time to relax, more time with family, less stress and the peace of mind of knowing your family is living in a home that's as clean and healthy as it can possibly be.

100% Satisfaction Guarantee

If you're unhappy with any area we've cleaned, call within 24 hours, and we'll come back and reclean it free of charge!

Call today for a free, no obligation estimate over the phone.

832-593-7500

www.maids.com



Because a cleaner home is a healthier home, and Nobody Outcleans The Maids.®

Our patented **Back Pack Vacs** can capture up to 99% of dust, allergens, bacteria, pet dander, pollen and other pollutants. And by taking them out, your family can't breathe them in.

Also, our Vacs extend to clean the tops of ceiling fans, along baseboards, and to reach deep under beds and other places that often don't get cleaned at all.

Plus, our Vacs are just part of what we do.

- Our uniformed teams are bonded, insured and thoroughly trained.
- Our standards are so high, our teams actually clean kitchen and bathroom floors on hands and knees.
- Our 22-Step **Healthy Touch® Deep Cleaning System** is your reassurance that we'll clean every area.

The Maids
Home Services

Nobody Outcleans The Maids.®



Tim Ziifle

Your Neighborhood Real Estate Professional

- ◆ **BROKER, REALTOR® WITH OVER 20 YEARS EXPERIENCE**
- ◆ **CENTURY 21 "TOP PRODUCER" 2002, 2003 AND 2004**
- ◆ **CENDANT MOBILITY CERTIFIED RELOCATION SPECIALIST**
- ◆ **MEMBER INSTITUTE OF RESIDENTIAL MARKETING** 
- ◆ **EXPERT RESIDENTIAL REAL ESTATE MARKET ANALYST**
- ◆ **ACCREDITED BUYER REPRESENTATIVE** 
- ◆ **FORMER DIVISION PRESIDENT FOR MAJOR HOMEBUILDER**
- ◆ **E-PRO CERTIFIED** 



THE MORTON GROUP
5630 N. ELDRIDGE, SUITE 100
HOUSTON, TEXAS 77041



***Our office is located at the corner of Eldridge & Tanner
&
I specialize in Lakes On Eldridge & Lakes On Eldridge North***

**CALL ME IF YOU ARE THINKING OF
SELLING, BUYING (new or resale) OR BOTH!**

Direct: (832) 457-1989

www.har.com/timziifle
www.realtor.com/houston/ziifle
E-mail: tcziifle@msn.com



MULTIPLE LISTING SERVICE
MLS



Lakes on Eldridge North

The Bluebonnet Stencilers of Texas

The Bluebonnet Stencilers of Texas, a non-profit group serving all of Houston, meet each first Monday of the month from 6:30-9 PM at the Tracy Gee Community Center, 3599 Westcenter (One block east of Sam Houston Toll Road West). This chapter is actively seeking new members in the Houston area. Membership is open to anyone who is interested in stenciling and the related arts of faux finishing and decorative painting. For more information concerning meetings, call Joanne Wafer at 281-376-1466 or Moliède Null at 281-991-5870.

Pride of Texas Decorative Artists

The Pride of Texas Decorative Artists (a division of National Tole Society) would like to invite all decorative artists to our monthly meeting on the 2nd Thursday of the month at 6:30 PM. We meet at Bear Creek Community Center off Patterson Road in Bear Creek Park. Our monthly "make it & take it" programs are taught by local artists. Please join us for fun and new ideas. For more information, call Peggy McElroy 281-565-0480.

Wine Club Update

The new contact information will be Cliff and Sherri Buster
Ph. - 713-849-5393; E-mail - LOENwineclub@houston.rr.com

DISCLAIMER: Articles and ads in this newsletter express the opinions of their authors and do not necessarily reflect the opinions of Peel, Inc. or its employees. Peel, Inc. is not responsible for the accuracy of any facts stated in articles submitted by others. The publisher also assumes no responsibility for the advertising content with this publication. All warranties and representations made in the advertising content are solely that of the advertiser and any such claims regarding its content should be taken up with the advertiser.

* The publisher assumes no liability with regard to its advertisers for misprints or failure to place advertising in this publication except for the actual cost of such advertising.

* Although every effort is taken to avoid mistakes and/or misprints, the publisher assumes no responsibility for any errors of information or typographical mistakes, except as limited to the cost of advertising as stated above or in the case of misinformation, a printed retraction/correction.

* Under no circumstances shall the publisher be held liable for incidental or consequential damages, inconvenience, loss of business or services, or any other liabilities from failure to publish, or from failure to publish in a timely manner, except as limited to liabilities stated above.

At no time will any source be allowed to use the Lakes on Eldridge North Newsletter contents, or loan said contents, to others in anyway, shape or form, nor in any media, website, print, film, e-mail, electrostatic copy, fax, or etc. for the purpose of solicitation, commercial use, or any use for profit, political campaigns, or other self amplification, under penalty of law without written or expressed permission from Peel, Inc. The information in the Lakes on Eldridge North Newsletter is exclusively for the private use of Lakes on Eldridge North residents only.

Teenage Jobseekers

The following young people are interested in making a little extra money. If you would like to be included, removed, or updated in the next issue, please contact Jillian Barkley, 832-243-0000 or e-mail jbarkley@houston.rr.com (LOEN) *All information must be received by the 10th of the month.*

Babysitting
Pet/Plant Sitter
Lawn Care
Car Washing
Window Washing
Power Washing Driveways
Website Design/PC Assist.

Michelle, 18	•	713-937-0727(LOE)
Eileen, 16	•	713-937-0727(LOE)
Courtney, 13	•	713-937-0288(LOE)
Craig, 14	•	713-937-0288(LOE)
Sage, 16	•	713-896-4933(LOE)
George, 16	•	713-467-0932(LOE)
Delania, 13	•	713-849-2812(LOE)
Gabby, 16***	•	713-849-4596(LOE)
Chelsea, 19	•	SUMMER ONLY 713-983-7252(LOE)
Chinyere, 14	•	713-856-9495(LOE)
Jessica, 17	•	713-849-3692(LOE)
Katie, 16	•	713-896-7941(LOEN)
Patrick, 14	•	713-937-0727(LOE)
Ryan, 14	•	713-896-794(LOEN)
Kelechi, 13	•	713-856-9495(LOE)
Benny, 12	•	713-476-3750(LOE)
Jared, 17	•	832-467-9336(LOE)
Ryan, 17	•	832-243-9893(LOEN)
Katherine, 15**	•	832-243-9893(LOEN)
Jessica, 13	•	713-937-1383(LOEN)
Erica, 12	•	713-937-1383(LOEN)
Brianna, 10	•	713-937-1383(LOEN)
Thomas, 11	•	713-856-7372(LOEN)
Steven, 14	•	713-856-5666(LOEN)
James, 16	•	713-466-8298(LOEN)
Courtney, 12	•	713-493-0288(LOEN)
Tom, 14	•	713-466-6878(LOE)
Elisse, 16	•	713-896-9495(LOEN)
Leslie, 11**	•	832-467-4842(LOEN)
Erika, 12**	•	713-856-7192 (LOE)
Greta, 19	•	Christmas & Summer Only .. 713-896-4170 (LOEN)
Kate, 13	•	713-466-6878 (LOEN)
Joe, 18	•	832-876-4191 (LOE)

*First Aid Certified with Boy Scouts

** Red Cross Babysitting Program

***Fluent in Spanish

Beginner Swim Instructor

Katie, age 16713-896-7941 (LOEN)

Piano Lessons

Idil, age 15 713-896-1833 (LOE)

Guitar Lessons

Katherine, 15 **832-243-9893 (LOEN)

Lakes on Eldridge North



Yorkshire Academy's latest Parent Education Series showcased noted nutritionist and LOE resident, Anne Dubner. Ms. Dubner spoke to Yorkshire parents on "How to Survive the Supermarket". The next speaker will be a local storyteller, and as all Y.A. programs, is open to the community. Please call for more information @ 281 531-6088.

Numerous Teen Activities Set for Spring at Cy-Fair College

Cy-Fair area parents don't have to look too far to find quality, fun and educational activities for their children – just check out the library programs at Cy-Fair College Branch Library.

Teens On Campus Club activities for ages 12 to 18 are held the first Saturdays of the month at 1 p.m. in the library, room 131. Among the activities this spring are geocaching (a high-tech scavenger hunt) and make-your-own- ice cream sundae.

For the book lovers, there are several book discussion groups (limited to 15 teens per group) including the "Classics in Translation" for home schooled teens as well as "Contemporary" and "Graphic Novel" for all middle-school and high-school aged teens.

Among the spring special events are a film, "Promises," followed with a discussion; a guest poet and diplomat speaking on "Minorities in Israel", "Poetry and Diplomacy" and "Poetry and Multiculturalism"; Da Camera of Houston presenting the Enso String Quartet and a Prom Dreams Community Project.

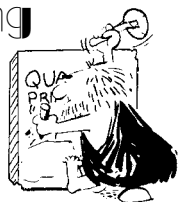
Go online to www.cy-faircollege.com/library or check out Teen Librarian Elise Sheppard's web page <http://faculty.nhmccd.edu/elsheppard/activities.htm> for all the planned activities.

For teen program information, contact Sheppard at elise.j.sheppard@nhmccd.edu or call 281-290-5248.

Peel, Inc. Printing & Publishing

Publishing community newsletters since 1991

We currently publish newsletters for the following subdivisions:



Houston

Berkshire
Cypress Mill
Fairfield
Harvest Bend, The Village
Lakes on Eldridge
Lakes on Eldridge North
Sommerall

Steeplechase
Summerwood
Village Creek
Willowbridge
Willowlake
Winchester Country
Wortham Village

Austin

Circle C Ranch
Davenport Ranch
Highland Park West Balcones Area

Ridgewood
Westcreek

To advertise in one of our newsletters, call one of our friendly salespeople:

Donna Sommer	832-237-4684
Wortham Resident	dsommer@PEELinc.com
Jeri Deyoe	713-569-5342
Fairfield Resident	jdeyoe@PEELinc.com
Kelly Peel	512-589-5471
Austin Area	Kelly@PEELinc.com

806-385-6444

www.PEELinc.com

HOLY SPIRIT EPISCOPAL SCHOOL



Holy Spirit Episcopal School offers a private, Christian education for infants through middle school students.

- Challenging core curriculum
- Outstanding technological program
- Visual and performing arts
- Interscholastic competition
- Athletics
- Outdoor educational experiences
- Spanish program with Costa Rican exchange
- After-school programs
- Infant and toddler program



12535 Perthshire Road
Houston, Texas 77024
(713) 468-5138

www.hses.org

**ARCHITECTURAL REVIEW APPLICATION (ACC)
REQUEST FOR HOME IMPROVEMENT**

I understand that the ACC Committee will act on this request as quickly as possible and will advise me of their decision in writing. I agree not to begin the proposed project until the ACC Committee notifies me of their approval and/or conditions of approval. If construction has already begun, I will cease construction until approval has been granted.

SUBDIVISION

PRINT NAME

WORK PHONE NUMBER

ADDRESS

HOME PHONE NUMBER

CITY

ZIP CODE

TYPE OF IMPROVEMENT/CHANGE

- | | | |
|---|--|--|
| <input type="checkbox"/> Storage Building | <input type="checkbox"/> POOL | <input type="checkbox"/> BASKETBALL GOAL |
| <input type="checkbox"/> Patio | <input type="checkbox"/> Spa | <input type="checkbox"/> Solar Screens |
| <input type="checkbox"/> Patio Cover | <input type="checkbox"/> Roof | <input type="checkbox"/> Burglar Bars |
| <input type="checkbox"/> Gazebo | <input type="checkbox"/> Room Addition | <input type="checkbox"/> Fence |
| <input type="checkbox"/> Greenhouse | <input type="checkbox"/> Sidewalk | <input type="checkbox"/> Paint |
| <input type="checkbox"/> Deck | <input type="checkbox"/> Siding | <input type="checkbox"/> Play Structure |
| <input type="checkbox"/> Driveway | <input type="checkbox"/> Major Landscaping | <input type="checkbox"/> Other |

HEIGHT: _____ (FROM GROUND TO HIGHEST POINT) LENGTH: _____ WIDTH: _____

MATERIALS: _____ COLOR OF STRUCTURE: _____

ROOF MATERIAL: _____ ROOF COLOR: _____

A LOT SURVEY OR TO-SCALE DRAWING SHOWING THE PROPERTY LINES, RESIDENTIAL BUILDING, EASEMENTS, FENCES, ETC. IS REQUIRED FOR ALL ADDITIONS TO THE PROPERTY OR HOME (I.E. BUILDINGS, DECKS, PATIOS, SIDEWALKS, DRIVEWAYS, PLAY STRUCTURES, BASKETBALL GOALS, POOLS, SPAS, ETC.)

**** If you are building a structure with walls or a roof you must provide an elevation drawing.****
For improvements such as painting, siding, burglar bars, solar screens, etc., provide the color.

Signature of Owner

Date

DO NOT WRITE BELOW THIS LINE

Application Approval: _____ Conditions: _____

Application Denied: _____

***** Approvals are valid for a period of 90 days. Any approved projects must be completed within the 90 day period. Failure to begin or complete the project will result in the need to reapply.*****

Signature of ACC Chairman/Date

Signature of ACC Member/Date

COMPLETE APPLICATION AND MAIL TO:
VANMOR PROPERTIES, INC.
1505 HWY 6 SOUTH, SUITE 110, HOUSTON, TEXAS 77077
PHONE: 281.493.0668 FAX: 281.493.5654

#1 In LAKES ON ELDRIDGE SALES

★ LAKES ON ELDRIDGE HOMEOWNER ★

STEVE HARDCASTLE



RE/MAX Westside Realtors



281-925-3047

www.stevehardcastle.com

- **Broker; Relocation Expert; Over 20 years full-time experience**
- **Certified Residential Specialist (held by only 4% of Realtors)**
- **RE/MAX Westside TOP PRODUCER for 15 years ('89 – '04)**
- **Top Twenty RE/MAX agents in Texas (out of 5000 agents)**
- **Chairman's Award; Hall of Fame, Lifetime Achievement Award**
- **Top Ten Realtors in Houston-out of 10,000 HAR members (Per Houston Business Journal)**
- **Top 1% of all Realtors in North America (1989-2004)**

Peel, Inc.

P.O. Box 886
Littlefield, Texas 79339

Presorted Standard
U.S. Postage
PAID
Littlefield, Texas 79339
Permit #59

☎ Voice 806-385-6444

www.PEELinc.com