



# LAKES

ON ELDRIDGE

Volume 6, Issue 6  
June 2007

Official Newsletter  
[www.lakesoneldridge.net](http://www.lakesoneldridge.net)

## Gate Clickers & Other Changes at the Main Gate Entrance

As can be seen in another article in this newsletter, numerous homeowners have still not paid their annual dues. At its recent meeting, the Board authorized the immediate deactivation of all gate clickers belonging to residents in arrears on their accounts – this includes those who have not paid their annual dues, but also includes others who have lesser amounts still owing on their accounts. These clickers can only be reactivated by application to AMI and satisfactory resolution of the outstanding account.

The Board is aware that some residents already rely on the gate attendant to open the resident's gate for them, expecting to be recognized, and claiming inactive clickers, lost clickers, etc. As part of the crackdown on overdue accounts and to eliminate the possibility of the gate attendant being subjected to abuse for not agreeing to open the resident's gate, the attendant's clicker for the resident's gate has been removed from the gate house – the gate attendant can no longer open the resident's gate. All residents with inactive clickers – for whatever reason – must now enter through the visitor's gate. Those without LOE decals may be subjected to additional questioning – application forms for these decals are now available from the gate attendant.

Cones are being reintroduced at the main gate to enforce the separation between the visitor's entrance and the resident's entrance.

The resident's gate at the Lakes On Eldridge main entrance will also be closed at midnight and any resident returning after that hour will be required to enter via the visitor's gate. This will ensure extra vigilance from the gate attendant and, again, those without decals will be subjected to additional questioning to verify their residence. The left side of the exit gate that has been being left open will also be closed at that time and the automatic operation of the right side of that gate activated so that vehicles can still exit the property, but only through the right side of the exit gate.

The Board continues to study possible methods of addressing other problem areas, such as speeding, failing to stop at stop signs, passing a stopped school bus, etc. and expects to take action on these when an appropriate method is determined.

## CAN YOU BELIEVE IT?

Can you believe THAT 57 residents in Lakes on Eldridge have STILL not paid their annual assessments? We all moved to this subdivision because we thought it would be a nice place to live, but everyone of us needs to pay our fair share in keeping it nice. Unpaid assessments burden the neighborhood with additional costs and lead to legal action against those who are delinquent.

Please take a moment and check your records to make sure you are not one of these individuals. If you haven't already done so, please get that check in the mail today! If you are having difficulties, please call the managing agent, AMI, at 713-932-1122 to work out a payment plan. Your call will be treated with complete confidentiality.

To enjoy all of the amenities here in Lakes on Eldridge you must be in good standing and current on all your assessments. For example, only residents current in their assessments may reserve the Clubhouse facilities.

*Don't want to wait  
for the mail?*  
**View the current issue of  
the Lakes on Eldridge  
Community Newsletter  
on the 1st day of  
each month at  
[www.PEELinc.com](http://www.PEELinc.com)**

# Lakes on Eldridge

## IMPORTANT NUMBERS

AMI.....	713-932-1122
Gate Attendant .....	713-937-8825
Sheriff - (non-emergency).....	713-221-6000
Cy-Fair Fire Department - (emergency) .....	281-466-6161
(non-emergency) .....	281-550-6663
Poison Control .....	1-800-764-7661
Texas DPS .....	713-681-1761
Waste Management.....	713-695-4055
(trash collection Mondays & Thursdays)	
Aqua Source.....	713-983-3602
(Service or emergencies 24hrs).....	713-983-3604
Harris County Tax Office.....	713-224-1919
Reliant Energy.....	713-207-7777
(give pole # of street which is out)	
Entex (gas) .....	713-659-2111
Time Warner Cable .....	713-462-9000
Houston Chronicle .....	713-220-7211
Metro Transit Info .....	713-635-4000
Kirk Elementary.....	713-849-8250
Truitt Middle School.....	281-856-1100
Cy-Falls High School.....	281-856-1000
Cy-Ridge High School.....	281-807-8000
Newsletter Publisher	
Peel, Inc.....	advertising@PEELinc.com, 888-687-6444

## LOE Board Of Directors

To contact a member of the Board of Directors, call Alex Taylor with AMI at 713-932-1122. Leave the number where you can be reached. Mr. Taylor will then forward your message to one of the following board members:

Bronson Clay .....	President
Deborah Dunaway .....	Vice President
Lindsay Buchanan.....	Secretary
Cory Hammond.....	Treasurer

**Visit the Association Website:**  
**[www.lakesoneldridge.net](http://www.lakesoneldridge.net)**

## Airport Noise

LOE is now in the flight pattern for both Intercontinental and Hobby Airports, which means air traffic has significantly increased. If you are concerned over the noise make a call to one or all of the numbers below. It is the number of calls and the people taking time to make them that make the most effective appeal for change for this situation.

- Houston Airport Noise Complaints Hotline: 281 233-3900
- Air Traffic Approach Number: 281 230-8441
- FAA Hotline: 1-800-255-1111

For Information Only.

## FOURTH OF JULY PARADE & FAMILY FESTIVAL

**Wednesday, July 4th**

Kids, it's time to get out everything red, white and blue! The Fourth of July Parade is on again this year!

The LOE Swim Team and Greater Houston Pool will be hosting a 4th of July Parade & Family Festival, Wednesday, July 4th. Bring your lawn chairs, wear anything red, white and blue and get ready for LOE's best 4th of July blast.

- Have your child decorate their bikes, tricycles, strollers or wagons with tape, streamers, balloons, ribbons, blue and red soda cans tied on string or whatever. Decorate a float if you are up to the challenge. There will be prizes for best-decorated bike/tricycle/wagon/stroller/float.
- The Decorating Contest will be from 9:30 AM to 10 AM. Lineup for the contest will begin at 9:15 AM. Contest winners will get to lead the parade!
- The parade will start at 10:15 AM, at the clubhouse. Line-up will begin at 10 AM in the order in which riders appear. No promises about marching order will be made in advance.
- After the parade, join us at the clubhouse and pool for a family festival. There will be food, games and activities for all ages including water games, races, face painting and prizes.

So come join your neighbors for a day to celebrate our precious freedoms: among them, the freedom to have fun all afternoon and parade through our neighborhood singing off-key.

Last year we had at least 100 participants in the parade. For all the residents not marching, please bring your lawn chairs anywhere along Lake Center Run or Lakeshore Ridge and watch and cheer the parade and kids along. You will not be disappointed!

Traffic along Lake Center Run and Lakeshore Ridge will be directed one-way for the 30-minute parade.

Volunteers are needed for traffic duty, contest judging and food service.

If you would like to be a sponsor or volunteer, or you need more details, please e-mail Deborah Dunaway at [dsd1951@mac.com](mailto:dsd1951@mac.com) or call 713-983-9651.



## TANNER LAKES ANIMAL CLINIC In Your Neighborhood!



*Kenneth Malinowski, D.V.M.*

- Dental Grading at no charge! Dental Estimates!
- Ask about our Shelter Adoption Package at no charge!
- Come by anytime for a tour and meet Dr. Malinowski!

*Only The Best  
For Your Best Friend*

- ✓ Ultrasound
- ✓ Telemedicine
- ✓ Blood Pressures
- ✓ Radiology (x-rays)
- ✓ Tonopen (glaucoma)
- ✓ Dental cleanings
- ✓ Blood Pressures

**Office Hours**  
Mon, Wed, Fri 7am - 6pm  
Tues, Thurs 7am - 7pm  
Saturdays 8am - 1pm  
713/ 937-4484

# LAKEs

## ON ELDRIDGE

### 1ST QUARTER REVIEW 2007

Price Range	\$600,000+	Under \$600,000
# of Sales	1	7
Avg. List Price	\$675,000	\$412,342
Avg. Sales Price	\$709,000	\$399,214
Avg. Sq. Footage	4,721	3,861
Avg. \$ per Sq. Ft.	\$150.18	\$103.40
Days on Market	32	55
*Months of Inventory as of 5/07/2007 for all The Lakes on Eldridge Communities	4.9	2.7

## Ann Knoche

*Helping Families Create Memories in  
The Lakes on Eldridge Communities  
For Over Nine Years.*

**281.582.3911**

annpk@heritagetexas.com



heritagetexas.com

14340 MEMORIAL DRIVE  
HOUSTON, TX 77079



LEADING REAL ESTATE  
COMPANIES OF THE WORLD™



\*Based on HAR/MLS data Jan. 1, 2007 to March 31, 2007.





# Lakes on Eldridge

## ACCIDENTS DO HAPPEN IN LOE



Recent one car accident in LOE

Most of us are busy going about our lives and do not witness accidents in the neighborhood, but they do happen more frequently than one might think. Several accidents in LOE have been caused by speeding, passing other cars, failing to stop at stop signs and losing control while talking on cell phones.

In early May there was a single car accident in LOE. The driver

was a teenager returning from an all-night prom event, according to the mother who was at the scene. Thank goodness the teenager was not seriously injured--just a cut on the forehead and brush-burns from the airbag. The boy almost made it home before falling asleep! Fortunately, he had no other passengers in the vehicle and did not hit anyone else. The tree and his car appear to have suffered the most damage.

These next few months are a very exciting time for graduating teens gaining some independence. Please talk to your teens about the importance of driving safely and obeying all traffic laws. And while we are thinking about it, we adults should be setting a good example and driving safely.

For the most part our neighborhood is a safe community, but we do have a few individuals who shamelessly continue to drive well above the posted speed limit of 25 mph, pass school buses with flashing lights while children are being picked up or dropped off, and don't even slow down for stop signs. You know who you are! Soon, we will too and your names WILL appear in this newsletter – you have been warned!

Please remember accidents only take a fraction of a second to occur, don't happen on purpose and can have life altering effects for countless people. We want our neighborhood to be safe for everyone. Please drive safely.

- BRAKES
- TUNE-UPS
- AIR CONDITIONING
- STATE INSPECTIONS
- ELECTRICAL
- SUSPENSION
- ALIGNMENTS
- TRANSMISSIONS

**AUTO CHECK**  
QUALITY CARE CENTER

COMPLETE CAR REPAIR FOREIGN & DOMESTIC  
FAMILY OWNED AND OPERATED SINCE 1995

[www.autocheck7.com](http://www.autocheck7.com)

6259 N. ELDERIDGE  
@ W. LITTLE YORK

PHONE: (713) 466-9300

LUBE OIL FILTER

**\$9.95**  
purchase

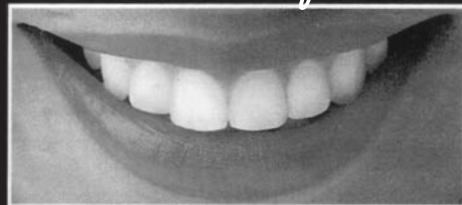
With \$100 or more  
in-service. (Most Cars)

**FREE**

**TIRE ROTATION /  
BRAKE CHECK**

For all 1st time customers.  
With this Coupon.

*We Create Beautiful Smiles!*



**S.M. Shirazi, D.D.S.**  
*Cosmetic & Family Dentistry*

**713-466-3700**

**5630 North Eldridge**

- ★ 12+ years in practice
- ★ New patients welcome
- ★ Emergencies seen same day
- ★ Payment plans available
- ★ Most insurance accepted
- ★ Movies available during treatment

**New Patient  
Special**

Exam, X-Ray, Cleaning

**\$100**

not applicable for insurance patients

**Bleaching  
Special**

(Reg. \$375)

**\$200**

good thru 8/31/07

# Have a Star-spangled Day!

This picture reminds me of reciting the Pledge of Allegiance in elementary school. As a real estate professional, I've made another pledge which is my commitment to help you sell your home as fast as possible for the best price!

*Call me for all your real estate needs-- whether you're buying, selling or relocating.*

## KAY HORSCH

*(And your neighborhood watch dogs)*

*Lakes on Eldridge  
Resident & Realtor*

**281-679-0101**

**kay@kayhorsch.com**



ROYAL OAKS

*Fine Properties*

11689 Westheimer, Suite C  
Houston, TX 77077

RoyalOaksFineProperties.com



*“Providing a Lifestyle, not just an address...”*



# Lakes on Eldridge

## BOARD NOTES: APRIL 2007

The Board of Directors of Lakes on Eldridge Community Association met on Tuesday, April 24, 2007. The following is a summary of what was discussed.

The Association had cash balances of \$535,291 in the Operating Fund and \$128,530 in the Replacement Fund. For the two months ended March 31, 2007 the Association had Total Income of \$258,133, Total Expenses of \$242,514 and an Operating Surplus in the amount of \$15,619.

The managing agent reported that \$39,440 of assessments and fees was collected during February 2007. During the period April 1, 2007 to April 24, 2007 an additional \$38,063 of assessments was collected. The Board reviewed the status report of April 6, 2007 from the Association's legal counsel. The managing agent was requested to continue providing ongoing updates of all collections.

The Board reviewed the sales tax refund recap sheet provided by O'Neal & Holmes via the managing agent. Approximately \$115,000 is due to be refunded to Lakes on Eldridge in the upcoming months. It was agreed to put the tax-exempt refund money into the reserve fund and consider putting a portion of that money into CD's.

The LOE Access Control Committee met on April 7, 2007. A report was submitted, but clarification is needed on some of the issues that were discussed and these will be reviewed at the next Board meeting. It was proposed that a form be made for all gate attendants to sign acknowledging that they understand the LOE Gate Regulations and committing to perform certain required actions. It was agreed that the cones that were previously in place at the Eldridge Parkway entrance would be put back. The pricing for a patrol car with officer from ISSC was obtained - approximately \$43,000.00 annually. The Board asked if the rental of a radar gun could also be included in the service. The Board also asked the managing agent to contact ISSC to inquire about trying the service out for a short. In addition to contacting ISSC the Board asked the managing agent to contact neighboring communities about renting the officer and his vehicle during an off time.

The Landscape Committee submitted its written report for the months of April/May, 2007. It discussed the recovery of the plants from an earlier season fungus and that the children who were involved in the vandalism earlier this year will be involved in the prep and

planting of the up coming years color change. It was proposed by Landscape Images of Texas and approved by the Board at a cost of \$550 to add two-ton boulders to the grass area by each of the Tanner & Ginger Pond entrances where cars cut across the corner and ruin the grass. One boulder will be placed on each side of the street with landscaping to be added around it in the near future to soften the look. It was also proposed by Landscape Images of Texas and approved by the Board to replace the missing hollies along the property walls. Seven-gallon plants were selected to be planted, at a cost of \$6,627.83.

The managing agent reported that it had thus far been unsuccessful in locating radar signs with built in cameras for the purpose of recording speeding vehicles. Additional efforts are being made.

It was reported by the managing agent that it would cost approximately \$10,000-\$12,000 to convert pool, tennis court, and the Beach Club to key card access. The Board was to further consider the possibility of doing so.

A preliminary sketch on a shower to be installed at the end of each of the stairs at the beach area was submitted for the Board to review. The Board has asked the managing agent to contact vendors to receive a bid on contraction of the shower unit.

The next regular meeting of the Board of Directors is scheduled for Tuesday, May 17, 2007 at 6:30 p.m. at the Beach Club.

## SUGGESTION BOX

Have you ever wanted to make a suggestion to the LOE Board of Directors but don't know how to go about it? Well, they have now made it very easy and convenient for you. The Board has placed a SUGGESTION BOX in the Member Section of the LOE website, [www.lakesoneldridge.com](http://www.lakesoneldridge.com). Please type in any suggestions for the Board to review and discuss. This Suggestion Box goes directly to the Board members and after such discussion; one of the members will be in contact with you. Please note that you may be called upon to be a part of the solution to the suggestion you make.



**the  
Pool Nanny**  
Weekly & Vacation  
Swimming Pool  
Maintenance  
**281-858-4868**



**Custom  
Outdoors**

Decks  
Shade Arbors  
Texas Porches  
Patios  
Outdoor Kitchens  
Flagstone  
Waterfalls  
Swimming Pools  
281-858-9696

\*Extensive Online Photo Album\* [www.customoutdoors.com](http://www.customoutdoors.com)

*Let Us Bring Your Outdoors To Life!*

# INNOVATION

*"If there's a better way to do it ...find it."*

Thomas Edison

*"Real estate is changing so often, you got to stay on top of it or you'll fall behind."*

Victoria Lioznyansky

**IT'S THE SPARK OF CREATIVITY** that fuels Victoria Lioznyansky in her real estate career. She knows what was effective in selling homes yesterday is old news today. Today's home buyers and sellers are more educated and sophisticated than in years past. So Victoria is driven to provide the level of service that you demand. Her desire to stay ahead of this constantly changing industry finds her searching for better, faster and smarter methods to get the job done.

**WHEN THOMAS EDISON** was developing the light bulb, the idea of using a filament didn't just pop into his head one day. He researched his plans for years, tested different elements and eventually discovered the parts that turned the lights on. Victoria Lioznyansky works the same way. Her years of business experience provide a solid foundation that gives her an understanding of market trends. Couple that with her practices of utilizing state-of-the-art computer technology, attending every new real estate course, producing high-impact marketing and advertising on the Internet, and you have an agent of the new Millennium.

**WHEN YOU NEED** to buy or sell a home, call the professional who treats this business like the sophisticated industry it has become. Give Victoria Lioznyansky a call and get ready to move over to the fast lane.



810 Hwy 6, Suite 100  
Houston, TX 77079

Sold@VictoriaTheRealtor.com  
www.VictoriaTheRealtor.com

281-782-9762

 **REALM**  
Real Estate Professionals



# Lakes on Eldridge

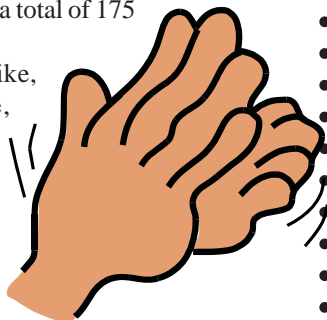
## A BIG HAND OF APPLAUSE!

**WOW!! We have some real athletes in Lakes on Eldridge!**

Congratulations to J.D. Joyce who finished the Boston Marathon (26 miles!) on April 16th!

Congratulations to LOE residents, Jerry Davis, Dr. Mary Geda, Randy McFarland, Mike Viator, Deepak Lumba, Bruce Ver West and Charlie Mansour for finishing the MS-150 on April 22, 2007! The MS 150 Bike Tour is a two-day cycling adventure from Houston to Austin that raises funds to help people living with Multiple Sclerosis. The first day the ride covered 100 miles and ended in the little town of La Grange on Saturday. Then Sunday the 13,000 riders covered the remaining 75 miles to downtown Austin for a total of 175 miles over the two days.

J.D., Jerry, Mary, Randy, Mike, Deepak, Bruce, and Charlie, we are really impressed and proud of you and your amazing accomplishments!



## Board Seeking Volunteer for Website Committee

The Board is always on the lookout for volunteers to serve on the various committees that have been formed to make our community a nicer place to live. We are currently especially interested in finding someone with website development experience to join the newly formed website committee. The committee will be preparing recommendations for an updated web site, will implement the recommendations, and will be responsible for maintenance and administration of the site. If you are familiar with the technical aspects of website design and operation, we'd love to hear from you! Graphical design experience would be a plus, but is not necessary. Please contact AMI at 713-932-1122 if you are interested.

## Article Submissions

If you would like to submit an article or any information for the Lakes On Eldridge Newsletter, you may do so by sending the information to [dsd1951@mac.com](mailto:dsd1951@mac.com). This information should include your name. All information should be received **no later than the 12<sup>th</sup> of the month** and is subject to editorial approval as well as space limitations.

## Imagine enjoying that healthy Spring Clean feeling all year long.

Know how good it feels when you throw open the doors and windows and let in that fresh clean feeling of Spring?

Call in The Maids, and start enjoying the healthiest, most thorough housecleaning you've ever had — without lifting a finger!

- ✓ Our 22-Step Healthy Touch® Deep Cleaning System is designed to cover every available area of your home. It's the most thorough program in the entire industry.
- ✓ Our highly trained, bonded and insured teams will clean your kitchen and bathroom floors on hands and knees, the surest way to get them really clean.

In fact, we're so thorough, research shows that 96% of our current customers would recommend us to their friends and neighbors!

\* NO PURCHASE NECESSARY. A PURCHASE WILL NOT INCREASE YOUR CHANCES OF WINNING. LEGAL RESIDENTS OF THE 50 UNITED STATES (D.C.) AND CANADA 18 YEARS AND OLDER. VOID IN MB, NB, NL, PE, QC, SK AND WHERE PROHIBITED. Promotion ends 5/31/07. For Official Rules, prize descriptions and odds disclosure, visit [www.maids.com](http://www.maids.com). If you would like your name removed from Sponsor's mailing list call 1-800-THE-MAIDS and your name will be removed within 60 days of the request. Sponsor: The Maids International, Inc., 4820 Dodge Street, Omaha, NE 68132, U.S.A.

You could win up to a year of FREE housecleaning!



Enter at [www.maids.com](http://www.maids.com)\*

5 Grand Prizes – One year of FREE housecleaning

10 First Prizes – FREE flights on Southwest Airlines

Instant Winners every day – FREE housecleaning, magazine subscriptions and more

100% Satisfaction Guarantee

Call today for a free estimate.

**832-593-7500**



# The Maids® Home Services

Nobody Outcleans The Maids®





## Yard of the Month at Lakes on Eldridge

It's time for June yard of the month. LOE would like to recognize those neighbors whose yards stand out from the rest and really say "WOW". The extra time, energy and money these residents expend on their lawns and the imaginative touches they bring to their landscaping not only enhance the value of the homes around them, but also foster a positive image of the entire neighborhood. Yard of the Month is chosen on the merits of its landscaping. If you would like to nominate one of your neighbors or yourself for the Yard of the Month, please contact the Yard of the Month coordinator: Deborah Dunaway at 713-983-9651 or dsd1951@mac.com.

*Congratulations to the winners of May Yard of the Month!*



**12703 Wilbury Park**



**12906 Islands Falls**



**5402 Morning Breeze**



**Juliet & 6 cygnets on 5\_6\_07**

LOE has 6 new cygnets that hatched over a 4-day period during the first week in May. The mother, Juliet and the little gray cygnets are in the lake in Pelican Point. Should you go by to see the little family, please use caution and stay back as they are wild birds and will only do what is natural and that is protect their young at all costs.

Many thanks to Betty Burkett, Edgar Ceballos, and Lee Mueller for all their tireless work and loving care during the hatching. We also thank the many members of the Wildlife Committee that feed and care for these lovely birds, which are such an asset to our community.

## Bashans Painting & Home Repair

**Commercial/Residential  
Free Estimates**

**281-347-6702**



**281-731-3383 cell**



- Interior & Exterior
- 20 Years Experience
- Hardiplank Installation
- Wood Replacement
- Pressure Washing
- Sheetrock Repair & Texturing
- Cabinet Painting
- Door Refinishing & Replacement
- Wallpaper Removal
- Custom Staining
- Fence Replacement or Repair

**References Available • Fully Insured  
NO PAYMENT UNTIL COMPLETION**

[bashanspainting@earthlink.net](mailto:bashanspainting@earthlink.net)



# Lakes on Eldridge

## Waste Management Helps Fund LOE Wildlife



**Lee Mueller accepts a check on behalf of the LOE Wildlife Fund from Waste Management.**

As part of Waste Management's efforts to maintain good community relations, Representatives of Waste Management attended the April meeting of the Board of Directors where they presented a \$2,000 check to the community's wildlife committee to help fund future costs. The check was part of Waste Management's response to the accident earlier this year involving a Waste Management vehicle and "Romeo", a swan in Pelican Point. In addition to the check Waste Management counseled the driver involved and committed to maintaining safe practices in Lakes on Eldridge.

The Company's Life Critical Rules for all trash collectors include:

1. **Never** back a vehicle with someone on the riding steps
2. **Never** back a dual drive vehicle from the right side without the proper mirrors, camera monitor.
3. **Never** exceed the speed limits posted or set by policy for school zones, riding steps, and stand-up right side driving.
4. **Always** safely secure the vehicle.
5. **Always** comply with the seat belt rules.

"Safety is our number one priority" said Bo Egbert, Public Sector Manager at Waste Management. If you need to contact Waste Management concerning your service, please call 713-686-6666.

## NATIONAL NIGHT OUT IS AUGUST 7th

The "24th Annual National Night Out" (NNO), a unique crime/drug prevention event sponsored by the National Association of Town Watch (NATW), has been scheduled for Tuesday, August 7, 2007. It's America's Night Out Against Crime! Last year over 34 million people participated in NNO, including Lakes on Eldridge.

**NATIONAL NIGHT OUT is designed to:**

- Heighten crime and drug prevention awareness;
- Generate support for, and participation in, local anticrime programs;
- Strengthen neighborhood spirit and police-community partnerships; and
- Send a message to criminals letting them know that our LOE neighborhood is organized and fighting back.

Last year, along with the traditional display of outdoor lights, each section in our neighborhood celebrated NNO with a variety of events and activities such as: block parties, cookouts, contests, childrens' games, and visits from local police, sheriff and fire department.

NNO has proven to be an effective, inexpensive and enjoyable program to promote neighborhood spirit and police-community partnerships in our fight for a safer nation and LOE. Plus, the benefits you and your neighbors will derive from NNO will most certainly extend well beyond the one night.

Shortly, Deborah Dunaway will be contacting many of our residents asking for help in organizing each section's National Night Out event. Please find time to volunteer for this fun and greatly rewarding event. If you would like to help organize this event, please contact Deborah Dunaway dsd1951@mac.com or 713-983-9651.

**At no time** will any source be allowed to use the Lakes on Eldridge Newsletter contents, or loan said contents, to others in anyway, shape or form, nor in any media, website, print, film, e-mail, electrostatic copy, fax, or etc. for the purpose of solicitation, commercial use, or any use for profit, political campaigns, or other self amplification, under penalty of law without written or expressed permission from Peel, Inc. The information in the newsletter is exclusively for the private use of Lakes on Eldridge residents only.



**Paragon Pools**

Family, Friends, and Your Backyard.

Pentair Water Pool and Spa MEMBER APSP The Association of Pool & Spa Professionals

**A recipe for relaxation, just add water.**



- Custom Swimming Pools & Renovations
- Pool Repair & Service • Outdoor Kitchens • Cabanas



**713-869-SWIM (7946)**

**ParagonPool.com**

# Lakes on Eldridge

## LOE BOOK CLUB

Book club has meets on the 4th Monday of each month at 7:30 P.M. We try to read a wide variety of material, so if this month's selection doesn't appeal to you, maybe next month's will. Do join us when we tackle a book on which you have comments or opinions. We will again be meeting in various members' homes, so call or e-mail Celeste Fritz, 713-896-6942, cfritztx@houston.rr.com for additional information.

NOTE that because of the Memorial Day holiday, we have moved May's date later and will skip a regular June meeting.

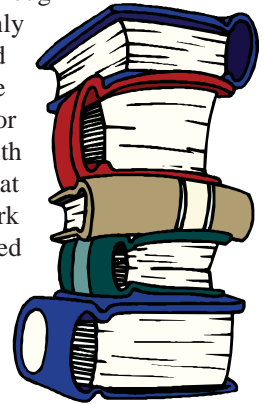
June 11 (note: later because of Memorial Day) – *Widow of the South* by Robert Hicks. In 1894 Carrie McGavock is an old woman who has only her former slave to keep her company...and the almost 1,500 soldiers buried in her backyard. Years before, rather than let someone plow over the field where these young men had been buried, Carrie dug them up and reburied them in her own personal cemetery. Now, as she walks the rows of the dead, an old soldier appears. It is the man she met on the day of the battle that changed everything. The man who came to her house as a wounded soldier and left with her heart. He asks if the cemetery has room for one more. In an extraordinary debut novel, based on a remarkable true story, Robert Hicks draws an unforgettable, panoramic portrait of a woman who, through love and loss, found a cause. Known throughout the country as "the Widow of the South," Carrie McGavock gave her heart first

to a stranger, and then to a tract of hallowed ground-and became a symbol of a nation's soul.

July 23 – *To the Tower Born* by Robin Maxwell. In 1483, Edward and Richard of York—Edward, by law, already King of England—were placed, for their protection before Edward's coronation, in the Tower of London by their uncle Richard. Within months the boys disappeared without a trace, and for the next five hundred years the despised Richard III was suspected of their heartless murders.

In *To the Tower Born*, Robin Maxwell ingeniously imagines what might have happened to the missing princes. The great and terrible events that shaped a kingdom are viewed through

the eyes of quick-witted Nell Caxton, only daughter of the first English printer, and her dearest friend, "Bessie," sister to the lost boys and ultimate founder of the Tudor dynasty. It is a thrilling story brimming with mystery, color, and historical lore. With great bravery and heart, two friends navigate a dark and treacherous medieval landscape rendered more perilous by the era's scheming, ambitious, even murderous men and women who will stop at nothing to possess the throne.



## Celebrating 30 Years of Excellence The Branch School

*Where Children Love Learning*  
Three years – 5<sup>th</sup> grade

- Challenging academics in a nurturing environment
- Character education through peacemaking skills
- Hands-on environmental education in an award-winning Outdoor Classroom

2006 Teacher of the Year Award – The Christa McAuliffe  
In Search of Excellence Award – Houston West Chamber of Commerce  
2005 Lucie Wray Todd Environmental Education Award – Houston Audubon Society

Accredited by Southern Association of Colleges and Schools

**Now Enrolling  
2007-2008**



1424 Sherwood Forest  
Houston, Texas 77043  
713-465-0288  
Applications accepted year-round  
Call for a tour and information.



[www.TheBranchSchool.org](http://www.TheBranchSchool.org)

## YARDMASTERS, Inc.

*"Where Beautiful Lawns Begin"*

**281-469-5158**



Mulch - Flowers

Lawn Service - Clean Ups

**Landscaping**

Rock - Flagstone

Outdoor Lighting

Drainage Systems

Sprinkler Systems (LI 5455)

[www.yardmastersinc.com](http://www.yardmastersinc.com)



15420 Telge Road • SERVING NW HOUSTON SINCE 1990  
FINANCING AVAILABLE • INSURED FOR YOUR PROTECTION





# Lakes on Eldridge

## HURRICANE PREPARATION

June 1 through November 30 is the Atlantic Hurricane Season. If a hurricane is predicted for the Houston area, the Houston/Galveston Weather Service Offices and the local Emergency Management Coordinator (Civil Defense Director) will release statements to the news media on the position and the intensity of the hurricane and their recommendations of which areas should be evacuated in the event of imminent landfall. A hurricane watch will be issued when hurricane conditions are possible, usually within 36 hours. A hurricane warning will be issued when hurricane conditions are expected, usually within 24 hours.

A visit to the websites of Red Cross ([www.redcross.org](http://www.redcross.org)) and the Harris County Flood Control District ([www.hcfd.org](http://www.hcfd.org)) will give you additional pointers for your planning. The Harris County Flood Control District's website has a truly excellent hurricane animated tracking chart one can download.

In the event of a hurricane where Houston has a significant chance of being hit (like Rita two years ago) the LOE gates will be opened and the power turned off some 48 hours before projected landfall. Gates will be restored to normal operation shortly after the storm passes or after electricity is restored. Please do not be alarmed when you find the gates open.

To better prepare LOE in the event we should experience a natural disaster, it would be greatly appreciated if any physicians, nurses, and EMP that reside in Lakes in Eldridge would call Mr. Alex Taylor with AMI at 713-932-1122 with your emergency contact numbers.

AMI hopes that the following checklist will assist you should a hurricane emergency arise:

### HURRICANE CHECKLIST

#### *Before Hurricane Season:*

\_\_\_ Check your insurance coverage. Property insurance normally excludes flood coverage! If you do not have flood insurance and wish to obtain it, there is a 30-day waiting period before coverage is effective. If you want to know whether you're in the flood plain, you can check online at [www.tsarp.org/viewmaps.html](http://www.tsarp.org/viewmaps.html) or call the Harris County Flood Control District at 713-722-7227.

\_\_\_ Develop an evacuation plan. Know where you can evacuate to - friends, relatives,

hotel? Can they accept pets? Become familiar with evacuation routes and the location of storm shelters.

\_\_\_ Trim dead or weak branches from trees.

\_\_\_ Make plans to protect your windows. While permanent shutters are the best protection, ½ inch plywood panels may be cut to fit each window. Pre-drill screw holes 18 inches apart. Label each pre-cut panel to identify the window it fits for easier installation. A product called Plylox is available at most hardware stores that will attach 1/2 inch plywood to your windows without drilling holes.

\_\_\_ Inspect your home's exterior. Check roofs and flashings, sealants around windows and doors, condition of masonry, etc. and repair any damage.

\_\_\_ Check your emergency supplies (see the list below).

#### *Emergency Supplies To Have On Hand:*

\_\_\_ Flashlight with extra batteries  
\_\_\_ Portable radio with extra batteries  
\_\_\_ First aid kit  
\_\_\_ Emergency food & water (bottled water and food that doesn't require refrigeration or cooking)

\_\_\_ Hand operated can opener  
\_\_\_ Essential medicines (at least a 5 day supply)

\_\_\_ Cash & credit cards (to buy necessities for at least 5 days)

\_\_\_ Sturdy shoes and work gloves

#### *During a Hurricane Watch*

\_\_\_ Check the radio, television, or internet for hurricane progress reports.

\_\_\_ Fill your cars with fuel. Keep in mind that there may be fuel shortages associated with an evacuation and plan accordingly. Consider leaving the area before a possible warning or evacuation.

\_\_\_ Store all outdoor objects like lawn furniture, toys, garden tools, outdoor plants etc, in a secure location, preferably in a garage or indoors. Anchor objects that cannot be brought inside.

\_\_\_ Install window protection.

\_\_\_ Move boats to a designated safe place, or moor them securely. Secure boats to trailer with chain or rope. Use tie-downs to anchor the trailer to the ground.

#### *During a Hurricane Warning*

\_\_\_ Keep your radio or television on to

listen for updates and instructions from local officials.

\_\_\_ Turn the refrigerator & freezer to the coldest settings and open only when absolutely necessary. This will keep food longer in the event of a power loss.

\_\_\_ Fill all bathtubs, jugs, bottles, pots & pans with water.

\_\_\_ Close chimney flues.

\_\_\_ Get to shelter. When inside, avoid elevators and stay away from windows, skylights and glass doors.

\_\_\_ IF POWER IS LOST, TURN OFF MAJOR APPLIANCES TO REDUCE POWER SURGE WHEN ELECTRICITY IS RESTORED.

#### *If You Must Evacuate:*

\_\_\_ Leave as soon as possible, avoiding flooded roads. Watch for washed out roads or bridges.

\_\_\_ Unplug all appliances. Turn off electricity and main water valve.

\_\_\_ Tell someone outside the storm area where you are going.

\_\_\_ If time permits, elevate household items to keep them out of water in the event of flooding.

\_\_\_ Take emergency supplies, warm protective clothing and blankets or sleeping bags with you.

\_\_\_ Don't forget your cellular phone and battery pack for recharging.

\_\_\_ Leave your cell phone number or phone number where you can be reached with a close LOE neighbor.

#### *After the Storm:*

\_\_\_ Avoid loose or dangling power lines and report them immediately to the power company, police or fire department.

\_\_\_ Beware of snakes, insects or animals driven to higher ground by floodwater.

\_\_\_ Check gas, electrical and water lines for damage. Wear heavy shoes and work gloves to protect against debris and broken glass.

\_\_\_ Open windows and doors to ventilate and dry your home.

\_\_\_ Listen to newscasts to see if water needs to be boiled or treated.

\_\_\_ Check refrigerated foods for spoilage.

\_\_\_ Carefully inspect your home for damage. If you sustain any damage from the storm, report it as soon as possible to your insurance agent.

# HOME PRICES *have gone up!*

For the period of 1/1/2007-3/31/2007	Total # of Homes Sold	\$/sqft
LOEN	14	\$110.6
LOE	8	\$110.3

Buyers are actively looking for homes  
in our neighborhood! Inventory is low!

*If you are considering selling your home, please call me first!*



## Danielle Gebara

Direct: 832-788-6002

Off: 281-664-8300 Ext. 3153

dgebara@houston.rr.com



## *Because every move matters!*

# Lakes on Eldridge

## Welcome To Our Newest Neighbors!

We have two new families who have moved into Lakes on Eldridge in the last month. If you have not already, please welcome our newest neighbors – go over and knock on their door to say “Hi”, or extend your hand when you see them outside. Everyone likes to feel welcome.

Crescent Cove welcomes Sang Lee and Kum Lee.

Bristol Banks welcomes Geert Peeters and Marie Peeters.

## Advertising Information

Please support the businesses that advertise in the Lakes on Eldridge Newsletter. Their advertising dollars make it possible for all Lakes on Eldridge residents to receive the monthly newsletter at no charge. No homeowners association funds are used to produce or mail the newsletters. If you would like to support the newsletter by advertising, please contact Peel, Inc. Sales Office at 512-989-8905; [advertising@PEELinc.com](mailto:advertising@PEELinc.com). The advertising deadline is the 10th of each month for the following month's newsletter.



## Helping You Get Started

Residents of Lakes on Eldridge that would be interested in learning to knit, crochet, do needlepoint or embroidery, please join us on any Thursday at the Beach Clubhouse from 10 a.m. to 12 p.m. We will be happy to help you get started.

For more information contact Catherine Spellings at 713-896-1652 (home) or 713-628-7083 (cell) or [CTSpellings@aol.com](mailto:CTSpellings@aol.com) or Tina Wang at (713)-574-1654 or [Yangingwang20022003@yahoo.com](mailto:Yangingwang20022003@yahoo.com)



# Yorkshire Academy

*Learning for a Lifetime*



**Complete  
Summer Program  
on the Web!**

**2007/2008 School Year  
Registration Online!**

*Come visit and see why 22 students  
from your neighborhood  
choose to attend Yorkshire Academy!*

## State-of-the-Art Facility!

Elementary • Preschool • MDO

14120 Memorial (1 blk west of Kirkwood)

# 281-531-6088

Fully Accredited  
[www.yorkshire-academy.com](http://www.yorkshire-academy.com)

Est. 1984  
[email:yorkaca@swbell.net](mailto:email:yorkaca@swbell.net)

## New Braunfels, Texas



# TEXAS RIVER CONDO VACATION RENTALS

By Owner

**2 Bedroom-2 Bath On the Comal River  
Across the street from Schlitterbahn Water Park**

Information: Visit our websites at  
<http://www.vrbo.com/105539> or  
[//home.houston.rr.com/texasriver](http://home.houston.rr.com/texasriver)  
Call 281-630-5611 or 281-970-5669





# HOUSTON'S BEST



The Houston Business Journal  
ranks the David Young Team  
#4 in Houston for sales  
volume in 2006, exceeding  
\$108 million in home sales.

Prestige and Professionalism.  
right here in your community!

*When you're ready to sell your home...  
For world class service, please contact:*

## CLIVE & NANCY GARDNER

Lakes on Eldridge Resident Realtors®

**Clive: 281-460-3168**

[cgardner@coldwellbankerunited.com](mailto:cgardner@coldwellbankerunited.com)

**Nancy: 713-870-3169**

[ngardner@coldwellbankerunited.com](mailto:ngardner@coldwellbankerunited.com)

[www.davidyoungteam.com](http://www.davidyoungteam.com)

14201 Memorial Drive, Suite 202, Houston, TX 77079



**UNITED, REALTORS®**

# Lakes on Eldridge

## LOE FRONT GATE REGULATIONS

### I. Appearance and Attitude

- A. The gate attendants must be neat, clean and professional in appearance at all times.
  - Shirts hanging out or off will not be tolerated.
  - Shirts and trousers must be cleaned and pressed.
  - Black shoes must be worn with the uniform. (No open toed shoes)
  - Black belts with small buckles must be worn with the uniform.
- B. The gate attendant is the first impression of the community.
  - He/she must be respectful, cheerful, and professional at all times.
  - He/she will respond to each visitor in a professional manner and a verbal greeting such as "Welcome to Lakes on Eldridge".
  - A friendly smile and wave, along with eye contact to each, is required.
  - While the attendant should be friendly, being overly friendly (i.e. casual or unusual familiarity) can weaken the gate attendant's authority.
- C. The phone in the gatehouse is a business phone.
  - It is not to be used for personal calls at any time.
  - When the phone rings, it must be answered in a professional manner as "Lakes on Eldridge front gate; this is (name), may I help you?"
  - The gate attendant is not to allow any phone conversation to interfere with his greeting residents' or visitors' vehicles coming through the front gate.
- D. The gatehouse is the first structure that residents, visitors, and potential residents see and it creates the first impression of the community.
  - The gate attendant is responsible for maintaining it in a neat, orderly and clean fashion at all times.
  - Maintenance items must be reported to AMI at 713-932-1122 immediately.

### II. Gate Attendant Responsibilities

- A. The gate attendant is to exit the gatehouse to greet each resident, visitor and delivery driver as they enter the property.
  - **AT NO TIME SHOULD THE ATTENDANT BE SITTING IN THE GATEHOUSE WHEN A VEHICLE ENTERS.**
- B. Mandatory acknowledgement of each resident is required
  - This includes standing outside the gatehouse to greet residents with a friendly wave
  - This includes ensuring that the vehicle has a current decal.
  - This gives assurance that the gate attendant is alert and performing the duties for which he/she is being paid.
  - If attending to a visitor, the attendant should still acknowledge any incoming resident's vehicle.
- C. The gate attendant is to allow access to all law enforcement officials, US Postal Service, UPS, Federal Express, Airborne Express, Public Utility Workers and School Buses without delay.
- D. The gate attendant is to pay attention for emergency vehicles and emergency personnel.
  - Allow such vehicles access without delay
  - Be prepared to assist in any way possible.

### E. VISITORS:

- The gate attendant will record the name of each visitor, the name of the resident being visited, the make and model of the vehicle, and the tag information. If the visitor is a construction worker, the gate attendant will also record the name of the company, the driver's license information and the location of job site.
- All visitors, including delivery drivers (food, florists, etc.) and trade persons (repairmen, plumbers, etc.) are to contact the resident they are visiting by using the resident call box directly in front of the visitor's entry gate.
- The attendant will maintain and use "resident information for gate attendant" sheets on site at the gatehouse and allow access to individual household workers and others noted on these forms. (NOTE: Resident Information For Gate Attendant Form in this Newsletter issue for updating)
- **UNDER NO CIRCUMSTANCES IS THE VISITOR'S GATE TO BE OPENED UNTIL ALL THE VISITOR DATA HAS BEEN RECORDED**
- The gate attendant will advise all visitors, including delivery drivers (food, florists, etc.) and trade persons (yardmen, repairmen, plumbers, etc.) that the speed limit throughout Lakes on Eldridge is 25 miles per hour.
- If the visitor is not allowed access by the resident, or the resident is not at home, and no previous arrangements have been made, the visitor is to be turned away and denied entry. The vehicle information is to be logged.
- When approached by visitors, the gate attendant should answer only basic questions and give basic information such as directions within the community, whom, what, where, and emergency information. Politely refer any other type of questions to the proper person for answers.
- F. The gate attendant shall ensure that all vehicles entering through the resident's gate have the appropriate windshield sticker.
  - If they do not have a valid sticker, they should be stopped and verified to be a resident by a picture identification that verifies an LOE address.
  - Their name and address should be recorded
  - When this is done, the resident should be provided with an application form for a sticker and told that they need to complete it and send it to AMI in order to receive a sticker.
  - If they do not have proper identification, then they need to enter on the visitor side by using the call box.
- G. Except in very special circumstances that he/she may be required to justify, the gate attendant is not to open the resident's gate for any vehicle – that gate should only be operated by a resident's clicker.
- H. Any resident or visitor who seems to be rowdy or out of control (based on the gate attendant's judgment), or too many people in the vehicle, should be recorded by type and color of car and license plate.
- I. The Clubhouse or any other LOE key is only to be provided to those previously authorized by AMI or a Board Member, and only after the person surrenders their driver's license.
- Anyone who protests a denial should be asked to contact AMI at

*(Continued on page 17)*

# Lakes on Eldridge

## Front Gate- (Continued from page 16)

713-932-1122 and offered the use of the phone to do so.

- All such loans of a key are to be recorded with name of person, address, driver's license number, date, time out and time in.

### III. Resident's Responsibility Regarding Access

- A. All residents of Lakes on Eldridge are required to have a valid community decal visible on the front, driver's side windshield of every vehicle that is permanently kept at their residence.
    - Decals can be ordered, free of charge, from AMI.
    - All decals must be removed from a vehicle prior to the sale or disposal of that vehicle.
  - B. The resident's entry side of the main (Eldridge Road) entrance is to be used exclusively by the residents with valid car decals and operational clickers.
    - The resident is responsible for relaying this information to all whom he invites to enter the community.
  - C. Residents are to give access to their guests, including delivery drivers, by pressing the number "9" on their phone when called from the front gate call box.
    - The gate attendant is not permitted to grant entry to a resident's visitor that has not been authorized via the call box, unless prior arrangements have been made with the gate attendant.
  - D. Guest lists are to be provided in writing to the gate attendant prior to an event (e.g. private parties held at a residence or the clubhouse).
- E. The gate attendant is not authorized to accept any more than two names by phone since this can interfere with his/her ability to monitor those entering LOE
  - F. RESIDENTS MUST NOT PROVIDE A CLICKER TO ANY NON-RESIDENT (e.g. nanny, yardman, etc)
  - G. Each resident is responsible for providing up-to-date "Resident Information for Gate Attendant" sheets to the front gate attendant.
    - These are required for visitors who may need entry when you are not at home, such as relatives, housekeepers, lawn services, etc.
    - If these are not provided or current, then access to these people will be denied.
  - H. Residents are responsible for ensuring that their guests know the proper procedure for entering and exiting the property.
  - I. Residents are responsible for ensuring that their guests comply with all community regulations (speed limits, stopping at stop signs, etc.)

**HELP YOUR  
BUSINESS GROW**



**ADVERTISE HERE**

**888-687-6444 • [www.PEELinc.com](http://www.PEELinc.com)**

**NO MATTER THE SIZE OF YOUR BUSINESS, WE'VE GOT ROOM FOR YOU!**



# Lakes on Eldridge

## Resident Information

For

## Gate Attendant

(Please Print)

DATE: \_\_\_\_\_

ADDRESS: \_\_\_\_\_

NAME: \_\_\_\_\_

SPOUSE: \_\_\_\_\_

CHILDREN: \_\_\_\_\_

PHONE NUMBER: H: \_\_\_\_\_ W: \_\_\_\_\_

C: \_\_\_\_\_

### MAINTENANCE SERVICES:

LAWN MAINTENANCE:(company) \_\_\_\_\_

WEEKLY \_\_\_\_\_ MONTHLY \_\_\_\_\_

POOL MAINTENANCE:(company) \_\_\_\_\_

WEEKLY \_\_\_\_\_ MONTHLY \_\_\_\_\_

MAID SERVICE:(company) \_\_\_\_\_

WEEKLY \_\_\_\_\_ MONTHLY \_\_\_\_\_

PEST CONTROL:(company) \_\_\_\_\_

WEEKLY \_\_\_\_\_ MONTHLY \_\_\_\_\_

OTHER REGULAR MAINTENANCE SERVICES:

\_\_\_\_\_  
\_\_\_\_\_  
\_\_\_\_\_

*Please give to the gate attendant.*

# Lakes on Eldridge

## Bible Study at Lakes on Eldridge

The Bible study at Lakes on Eldridge is a multi-denominational group of women who enjoy fun and fellowship along with studying how to apply Scripture to their lives. The group meets every Tuesday morning from 9:15 to 11:30 at the Beach Club at the Lakes on Eldridge. The first Tuesday of the month everyone goes out to lunch afterward.

We are currently studying the chronological New Testament, but will break for the summer from June 12 to September 11.

The fall program for the Bible study at Lakes on Eldridge will begin September 11, 2007. Our subject for this fall session is "Living A Balanced Life", from the Women of Faith Series. We live in a hectic world with many distractions that push our priorities out of their proper order. This study is designed to help you make the necessary adjustments to your busy schedule to include both spiritual as well as physical exercise.

## The Pearl Days Bus Trip to the Museum of Fine Arts Houston

The Pearl Fincher Museum of Fine Arts-Cypress Creek is offering northwest residents a bus excursion to the Museum of Fine Arts, Houston on Friday, June 29, 2007.

The MFAH is currently showcasing several exhibits including: The Great Wall of China: Photographs by Chen Changfen, Arms and Armor from the Ancient World and Fit for a King: English Silver from the Collection of George S. Heyer, Jr.

Participants will have the opportunity to attend a private docent-conducted tour of the exhibition at 10:30 a.m. as well as the noon Lunchtime Tour of Highlights of the European Galleries.

The bus leaves the parking lot behind the Cypress Creek Christian Church/Barbara Bush Library at 6815 Cypresswood Drive promptly at 9:00 a.m. Participants must be 50 years of age or older to ride the bus. If you are under the age of 50, we encourage you to carpool and meet the bus at MFAH. The Pearl Days Bus Trip is sponsored by the Volunteer organization for The Pearl Fincher Museum of Fine Arts-Cypress Creek. A \$5.00 non-refundable donation to The Pearl Fincher MFA will reserve your seat.

It's your museum! The renovation process of turning what once was the Harris County Library into a world class museum of fine arts is underway. Don't miss your chance to become a part of this exciting time. Participating in Pearl Days is one way you can show your support of our new museum. Don't miss the bus! Reserve your seat today by calling Laura Barousse at 281-370-5474 or Judi Redilla at 281-469-3434.

Visit online at [www.pearlmfa.org](http://www.pearlmfa.org) to find out more ways you can support The Pearl and about upcoming events.

**DISCLAIMER:** Articles and ads in this newsletter express the opinions of their authors and do not necessarily reflect the opinions of Peel, Inc. or its employees. Peel, Inc. is not responsible for the accuracy of any facts stated in articles submitted by others. The publisher also assumes no responsibility for the advertising content with this publication. All warranties and representations made in the advertising content are solely that of the advertiser and any such claims regarding its content should be taken up with the advertiser.

\* The publisher assumes no liability with regard to its advertisers for misprints or failure to place advertising in this publication except for the actual cost of such advertising.

\* Although every effort is taken to avoid mistakes and/or misprints, the publisher assumes no responsibility for any errors of information or typographical mistakes, except as limited to the cost of advertising as stated above or in the case of misinformation, a printed retraction/correction.

\* Under no circumstances shall the publisher be held liable for incidental or consequential damages, inconvenience, loss of business or services, or any other liabilities from failure to publish, or from failure to publish in a timely manner, except as limited to liabilities stated above.

## PLEASE NOTE

Landscapers and housekeepers should not have a remote to the community. Their names should be on file with the gate attendants and they should enter via the front entrance gate only. Please help control the access to our community by following these rules.



**Platinum Dealer**  
GE

**Water & Process Technologies**

*Ask about our "Don't lift a Finger  
Maintenance Program".  
Friendly Service  
& Low Prices.*

**Water Softener & Reverse Osmosis  
Maintenance, Repair,  
Sales & Service**

Filters available for most systems.



**Advanced Water Solutions**

**281-469-9227**



GE Water has over 500 US Certified Platinum Dealers. We were one of only 5 dealers awarded the "Outstanding customer support, sales & service" plaque for 2005 and 2006.  
Licensed and Insured Water Treatment Specialist No. WT0001839



# Lakes on Eldridge

## Upscale Outlet Center Scheduled to Open Spring 2008

*Submitted by: Amanda McCumber*

Construction has started on Houston Premium Outlets. The 430,000 square-foot outlet is on 75 acres. The property is located in Cypress off of U.S. Highway 290 between Mason Road and Fairfield Drive. The developer is NJ-based Chelsea, a division of Simon, the leader in the outlet industry based on its proven concept of Premium Outlet Shopping. The center will be a single-level, village-style project with a southwest architectural theme. Premium Outlets will house 120 outlet stores and will feature high-quality designer and name brands serving the area's permanent population as well as visitors to the area.

Houston Premium Outlets is estimated to bring 800 to 1,000 jobs to the Cypress area and is projected to generate millions of dollars in sales tax and real estate property tax revenue. To the east of this project, a 100 acre project, Fairfield Towne Center, is being developed by the Simon Community/Lifestyle Center Division. This 800,000 square foot project is slated to open fall 2008/spring 2009. Both projects combined will create over 1.2 million square feet of high quality retail space in this corridor.



### Peel, Inc.

[www.PEELinc.com](http://www.PEELinc.com)

#### KELLY PEEL

Sales Manager  
[kelly@PEELinc.com](mailto:kelly@PEELinc.com)  
512-989-8905, Ext. 22

203 W. Main Street, Ste. D  
Pflugerville, Texas 78660

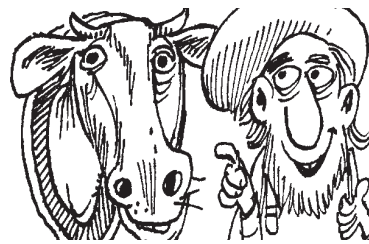
## Classifieds

**Rainbow Castle Super** - Sized Swing Set w/slide, rope ladder, rock wall, trapeze bar, tire swing, 3 swing positions. Two years old. Original cost \$4,000. Asking \$1,950. 713-896-7680 or email [ljordan@houston.rr.com](mailto:ljordan@houston.rr.com)

## Did You Know? Fun Facts!



*The smallest plane ever flown is the Bumble Bee Two, designed and built by Robert H. Starr of Arizona. It was 8 feet 10 inches long with a wingspan of 5 feet 6 inches.*



*There are approximately 100 million head of cattle on U.S. farms.*



*The minimum pool depth required for international water polo matches is 6 feet.*

Maximize your home's  
sale price with  
maximum advertising!

**Kevin  
Starr** ★  
GRI



My listings are on 28 web sites

Multiple Virtual Tours: Slide Show Tour & Voiced-over Guided Tour  
2 Houston Real Estate Magazines

Free Property Evaluation

Multi-Million Award Winner

Top Customer Service Award Winner

Direct: 713.412.0237

[kstarr@cbunited.com](mailto:kstarr@cbunited.com)

**COLDWELL  
BANKER**

UNITED, REALTORS®

Each Office is Independently Owned and Operated





# Tim Ziifle

**KNOWLEDGE + EXPERIENCE = RESULTS!**

**N. Eldridge Specialist & Lakes On Eldridge Homeowner**

*If you are seeking a proven real estate professional to...*

- ◆ FIND A BUYER FOR YOUR HOME WITHIN YOUR REQUIRED TIME FRAME
- ◆ PROVIDE A DETAILED ACCURATE ASSESSMENT OF YOUR HOME'S CURRENT MARKET VALUE
- ◆ HELP YOU TO STAGE YOUR HOME TO ENSURE MAXIMUM APPEAL TO PROSPECTIVE BUYERS
- ◆ PROVIDE YOU WITH EXPERT ADVICE AND GUIDANCE THROUGHOUT THE ENTIRE PROCESS

Please give me a call at:

**(832) 457-1989**

- ◆ BROKER, REALTOR® WITH OVER 25 YEARS OF PROVEN SUCCESS
- ◆ YOU DEAL DIRECTLY WITH ME - NOT MY SECRETARY OR ASSISTANTS
- ◆ CENTURY 21 "TOP PRODUCER" 2002, 2003, 2004, 2005, 2006
- ◆ CERTIFIED RESIDENTIAL SPECIALIST (HELD BY ONLY 4% OF REALTORS®)
- ◆ ACCREDITED LUXURY HOME SPECIALIST 
- ◆ ACCREDITED SELLER REPRESENTATIVE 
- ◆ CERTIFIED MEMBER INSTITUTE OF RESIDENTIAL MARKETING 
- ◆ ACCREDITED BUYER REPRESENTATIVE 
- ◆ RESIDENTIAL CONSTRUCTION CERTIFIED 
- ◆ CERTIFIED NEW HOME SPECIALIST 
- ◆ E-PRO CERTIFIED 



[www.har.com/timziifle](http://www.har.com/timziifle)

E-mail: [tcziifle@msn.com](mailto:tcziifle@msn.com)

[www.realtor.com/houston/ziifle](http://www.realtor.com/houston/ziifle)



**THE MORTON GROUP**  
 14525 FM 529, SUITE 200  
 HOUSTON, TEXAS 77095



## Teenage Jobseekers

Not Available Online

## Classified Ads

Business Classifieds are \$50.00. Please contact Peel, Inc. Sales at 888-687-6444 or [advertising@PEELinc.com](mailto:advertising@PEELinc.com).

## Summer Camps at Cypress Christian School

Cypress Christian School will once again host summer camps for children and adults in the community.

**Camp Invention - June 4 - 8:** This is a week-long summer enrichment program in the fields of science, mathematics, history, and the arts for children entering grades 1 - 6.

**Computer Explorers Summer Camp - June 11 - 15:** During this week-long summer camp, elementary students will discover how to become Master Builders with hands-on exploration of engineering, construction, and programming.

**High Touch - High Tech Science Camp - June 18- 22:** This is a one-week session that brings a child's imagination to life as he/she enjoys a variety of interactive, science-related activities. It will be an inspiring week of fun and learning!

**St. Thomas University Summer Reading Enrichment Program - June-August:** CCS will host this program again this summer. It is scheduled to run from June to early August and is available to children and adults.

### Sports Camps - June-July

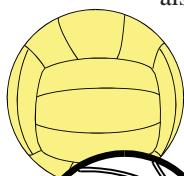
- **Volleyball Camps** - Most Mondays and Fridays from June 4 through July 30

Students of all grade levels are encouraged to attend to improve skill levels and knowledge of the game.

All grade levels through grade 8 (2007-2008) - 5:30 to 7:00 p.m. (Students in grades 6-8 can qualify for the Advanced session upon recommendation by the Coach)

Grades 9-12 (2007-2008) - 7:00 - 9:00 p.m.

- **Basketball Camps** - The main purpose of the camps is to teach the fundamentals of dribbling, shooting, passing, and defense, while also developing self-confidence and a positive mental attitude.



- **CCS Basketball Camp 1**, June 18 - 21, 9:00 a.m. to 12:00 p.m. (Camp 1 is for students entering 2nd- 6th)



- **CCS Basketball Camp 2**, June 25 - 28, 9:00 a.m. to 12:00 p.m. (Camp 2 is for students entering 7th-12th)

- **Sports Quest Soccer Camp** - June 25 - 29, 5:30 p.m. to 8:30 p.m.

**Advertise  
Your Business Here  
888-687-6444**

# Peel, Inc.

## Printing & Publishing



Publishing community newsletters since 1991

### -- Austin --

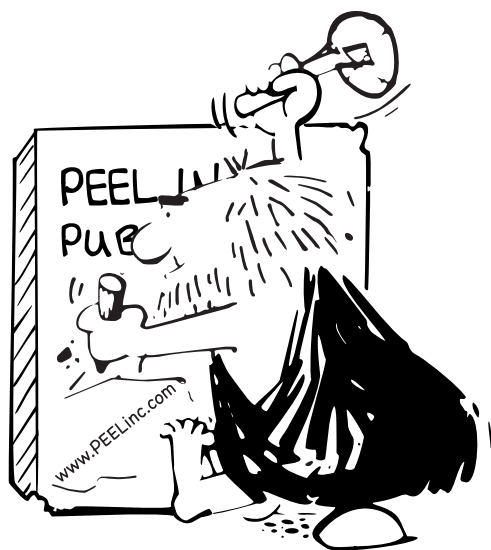
Amberwood  
Avery Ranch  
Barker Ranch  
Brushy Creek Village  
Canyon Creek  
Cherry Creek on Brodie Ln.  
Circle C Ranch  
Courtyard  
Davenport Ranch  
Estates of Shady Hollow  
Granada Hills  
Highland Park West Balcones  
Hill Country/Westview Estates  
Horizon Park  
Jester Estates  
North Acres  
Pemberton Heights  
Ridgewood  
River Place  
Scenic Brook  
Sendera  
Shadow Glen  
Steiner Ranch  
Stone Canyon  
Tanglewood Oaks  
Travis Country West  
Villages at Western Oaks  
Westcreek

### -- Dallas/Fort Worth --

Brook Meadows  
Eldorado Heights  
Eldorado HOA  
Glendover Park  
Highlands of Russell Park  
Stone Brooke Crossing  
Timarron  
Woodbriar Estates  
Woodland Hills

### -- Houston --

Berkshire  
Coles Crossing  
Cypress Mill  
Fairfield  
Hambeldon-Briarchase  
Harvest Bend, The Village  
Hastings Green  
Kings Manor  
Lakes of Bridgewater  
Lakes on Eldridge  
Lakes on Eldridge North  
Lakewood Grove  
Legends Ranch  
Longwood  
Oakwood Glen  
Park Lakes  
Riata Ranch  
Ridge Lake Shores  
Riverstone Ranch  
Steeplechase  
Summerwood  
Village Creek  
Waterford Harbor  
Westheimer Lakes  
Willowbridge  
Willowlake  
Willow Pointe  
Winchester Country  
Winchester Trails  
Windermere Lakes  
Wortham Village



Kelly Peel, Sales Manager

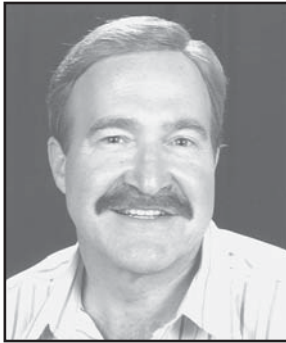
kelly@PEELinc.com • 512-989-8905

**512-989-8905**

**www.PEELinc.com**



**#1 In LAKES ON ELDRIDGE SALES**  
**★ LAKES ON ELDRIDGE HOMEOWNER ★**



**STEVE**  
**HARDCASTLE**



**RE/MAX Westside Realtors**

**281-925-3047**

**[www.stevehardcastle.com](http://www.stevehardcastle.com)**

- **RE/MAX Westside #1 TOP PRODUCER for 18 years ('89 – '06)**
- **Top Twenty Realtors in Houston-out of over 20,000 HAR members (Per Houston Business Journal)**
- **Top 1% of all Realtors in North America (1989-2006)**
- **Top Twenty RE/MAX agents in Houston Area (out of 1700 agents)**
- **Chairman's Club; Hall of Fame; Lifetime Achievement Award**
- **Certified Residential Specialist (held by only 4% of Realtors)**
- **Broker; Relocation Expert; 25 years of real estate experience**

**Site for Neighborhood News & Photos**

**[www.loeneighbors.com](http://www.loeneighbors.com)**

**Peel, Inc.**

203 W. Main Street, Suite D  
Pflugerville, Texas 78660

PRSRT STD  
U.S. POSTAGE  
PAID  
PEEL, INC.

**☎ Voice 512-989-8905**

** [www.PEELinc.com](http://www.PEELinc.com)**