



# LAKES

## ON ELDRIDGE

### NORTH

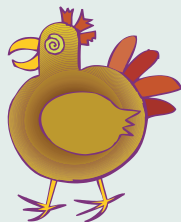
Volume 6, Issue 6

June 2007

## Loen Ladies Club

### Chickless Hens

Are you an empty nester or just simply foot loose and fancy free? Please join us for fun outings, potluck lunches and coffee mornings.



Coffees are planned for April, May, June and July. Further activities are also in the planning.

*For more information please contact:*

*Kathy Benson 713 937 1722*

*Christy Adams 832 230 1480*

### Social Events Group

The evening social events are a great way to get to know people in our neighborhood in a relaxed atmosphere.

The Dinner Club will continue to meet every 3rd Saturday of the month at 6:30PM at a chosen restaurant. This year, due to popular demand we have added an additional Dinner Club for members who prefer to eat at a later hour. We will meet every 4th Saturday of the month at 8:00pm.

With your participation and continued enthusiasm we hope to have a wonderful year. Our activities are not limited to dining. We look forward to including an evening at the opera, symphony or perhaps a musical. Would you like to go to a Mystery Dinner Theater where each one of us will try and solve a murder mystery? Sound like something you would like to participate in?

*For more information please contact:*

*Maha Vanderschans: 713 466 1462*

*E-mail: maha\_vanderschans@hotmail.com*

### Bridge

Loen Ladies Club is pleased to have two bridge groups:

#### Day Group:

- Meets on the second Wednesday of each month at 1:00PM
- Is a very congenial bunch of ladies who have a great time
- Includes a beginner's table for anyone wishing to learn

#### Evening Group:

- Meets the first Friday of each month at 7:00PM
- Includes experienced players
- Is composed mainly of couples, but it is open to everyone - just as long as the numbers come out right. If you would like to play, but do not have a partner, maybe we can help you find one.

*For more information please contact:*

*Babs Clingo 713 983 7345*

### Girls' Night Out!

GNO is a great way to meet new friends and let your hair down.

Mark your calendars for Tuesday, May 29 7pm - Bunco at Cara Davis' house, 12011 Arcadia Bend Lane.

Wednesday, June 13, 8:00pm - We will ease into summer over gelato at Sorbetto's on Memorial Drive. Gals will be encouraged to bring their wedding albums to share and "walk down memory lane" together!

*For more information please contact:*

*E-mail: michol\_ecklund@hotmail.com.*



## Cancer Counseling, Inc Support Group Comes to Cypress

A support group for cancer patients and caregivers is beginning on Thursday, June 14 at 7 PM at Messiah Lutheran Church in Cypress, 11522 Telge Road, one-half mile north of Highway 290. The group will be led by licensed therapists from Cancer Counseling, Inc, a non-profit organization located near the Medical Center, 713-520-9873. Messiah Lutheran is hosting a satellite group of Cancer Counseling for folks in the Cypress area who need some support and who don't need another drive to the Medical Center. The group will be ongoing, meeting on the 2nd and 4th Thursday evenings of the month. The meetings are FREE, and all people in the community who are dealing with cancer are invited. Questions? Call 281-890-3013, and ask for Lynette.

*Don't want to wait  
for the mail?*  
**View the current issue  
of the Lakes on Eldridge  
North Community  
Newsletter on the 1st day  
of each month at  
[www.PEELinc.com](http://www.PEELinc.com)**

# Lakes on Eldridge North

## IMPORTANT NUMBERS

Gate Attendant .....	713-856-6127
Harris Co. Sheriff - (non-emergency) .....	713-221-6000
Cy-Fair Fire Department - (emergency) .....	281-466-6161
(non-emergency) .....	281-550-6663
Poison Control .....	1-800-764-7661
Texas DPS .....	713-681-1761
Waste Management .....	713-695-4055
(trash collection Mondays & Thursdays)	
Aqua Services .....	713-983-3602
(Service or emergencies 24 hrs) ....	713-983-3604
Harris County Tax Office .....	713-224-1919
Reliant Energy .....	713-207-7777
(give pole # of street which is out)	
Entex (gas) .....	713-659-2111
Time Warner Cable .....	713-462-9000
Houston Chronicle .....	713-220-7211
Metro Transit Info .....	713-635-4000
Kirk Elementary .....	713-849-8250
Truitt Middle School .....	281-856-1100
Cy-Falls High School .....	281-856-1000
Newsletter Publisher	
Peel, Inc. ....	advertising@PEELinc.com, 888-687-6444

## LOEN Board Of Directors

Jim Flanary .....	President
Don Byrnes .....	Vice President
Chris Chinni .....	Treasurer
Peter Smart .....	Secretary
John Kane .....	Director

## Article Submissions

Please e-mail articles and/or photos to [articles@PEELinc.com](mailto:articles@PEELinc.com). Submissions must be received by the 15th of the month for the following month's issue. (Advertising deadline is the 10th of the month.)

**For up-to-date announcements  
and information check our  
neighborhood website:  
[WWW.LOENHOA.COM](http://WWW.LOENHOA.COM)**

Deadline for submitting articles for the Lakes On Eldridge North Newsletter is the 10<sup>th</sup> of each month. Submissions are subject to space limitations and editorial approval. Submit at [www.PEELinc.com](http://www.PEELinc.com)

**PERSONAL CLASSIFIED ADS:** Deadline for submitting personal classified ads is the 10<sup>th</sup> of each month for publication in the following month's newsletter. Submit classified ads at [www.PEELinc.com](http://www.PEELinc.com).

**ADS:** Deadline for submitting ads is the 10<sup>th</sup> of each month for publication in the following month's newsletter.

Please contact Peel, Inc. Sales Office at 888-687-6444 or [advertising@PEELinc.com](mailto:advertising@PEELinc.com) for information on advertising.

## Advertising Information

- Please support the businesses that advertise in the Lakes on Eldridge North Newsletter. Their advertising dollars make it possible for all Lakes on Eldridge North residents to receive the monthly newsletter at no charge. No homeowners association funds are used to produce or mail the newsletters.
- If you would like to support the newsletter by advertising, please contact our Sales Office at 888-687-6444 or e-mail [advertising@PEELinc.com](mailto:advertising@PEELinc.com). The advertising deadline is the 10th of each month for the following month's newsletter.

Installation Maintenance Irrigation

**EXTERIORS**

Design

J.B. Crisp - Landscape Contractor

281.844.4569

10518 Indian Paint Brush Lane Houston, TX 77095  
BS. Horticulture

# LAKE S

ON ELDRIDGE NORTH

## 1ST QUARTER REVIEW 2007

Price Range	\$600,000+	Under \$600,000
# of Sales	1	14
Avg. List Price	\$919,000	\$395,435
Avg. Sales Price	\$919,000	\$389,509
Avg. Sq. Footage	4,975	3,750
Avg. \$ per Sq. Ft.	\$184.72	\$103.87
Days on Market	974	24
*Months of Inventory as of 5/07/2007 for all The Lakes on Eldridge Communities	4.9	2.7

## Ann Knoche

*Helping Families Create Memories in  
The Lakes on Eldridge Communities  
For Over Nine Years.*

281.582.3911

annpk@heritagetexas.com



heritagetexas.com

14340 MEMORIAL DRIVE  
HOUSTON, TX 77079



LEADING REAL ESTATE  
COMPANIES OF THE WORLD<sup>®</sup>



\*Based on HAR/MLS data Jan. 1, 2007 to March 31, 2007.





# Lakes on Eldridge North

## HURRICANE PREPARATION

June 1 through November 30 is the Atlantic Hurricane Season. If a hurricane is predicted for the Houston area, the Houston/Galveston Weather Service Offices and the local Emergency Management Coordinator (Civil Defense Director) will release statements to the news media on the position and the intensity of the hurricane and their recommendations of which areas should be evacuated in the event of imminent landfall. A hurricane watch will be issued when hurricane conditions are possible, usually within 36 hours. A hurricane warning will be issued when hurricane conditions are expected, usually within 24 hours.

A visit to the websites of Red Cross ([www.redcross.org](http://www.redcross.org)) and the Harris County Flood Control District ([www.hcfcd.org](http://www.hcfcd.org)) will give you additional pointers for your planning. The Harris County Flood Control District's website has a truly excellent hurricane animated tracking chart one can download.

In the event of a hurricane where Houston has a significant chance of being hit (like Rita two years ago) the LOE gates will be opened and the power turned off some 48 hours before projected landfall. Gates will be restored to normal operation shortly after the storm passes or after electricity is restored. Please do not be alarmed when you find the gates open.

To better prepare LOE in the event we should experience a natural disaster, it would be greatly appreciated if any physicians, nurses, and EMP that reside in Lakes on Eldridge would call Mr. Alex Taylor with AMI at 713-932-1122 with your emergency contact numbers.

AMI hopes that the following checklist will assist you should a hurricane emergency arise:

### HURRICANE CHECKLIST

#### *Before Hurricane Season:*

\_\_\_ Check your insurance coverage. Property insurance normally excludes flood coverage! If you do not have flood insurance and wish to obtain it, there is a 30-day waiting period before coverage is effective. If you want to know whether you're in the flood plain, you can check online at [www.tsarp.org/viewmaps.html](http://www.tsarp.org/viewmaps.html) or call the Harris County Flood Control District at 713-722-7227.

\_\_\_ Develop an evacuation plan. Know where you can evacuate to - friends, relatives, hotel? Can they accept pets? Become familiar with evacuation routes and the location of storm shelters.

\_\_\_ Trim dead or weak branches from trees.

\_\_\_ Make plans to protect your windows. While permanent shutters are the best protection, 1/2 inch plywood panels may be cut to fit each window. Pre-drill screw holes 18 inches apart. Label each pre-cut panel to identify the window it fits for easier installation. A product called Plylox is available at most hardware stores that will attach 1/2 inch plywood to your windows without drilling holes.

\_\_\_ Inspect your home's exterior. Check roofs and flashings, sealants around windows and doors, condition of masonry, etc. and repair any damage.

\_\_\_ Check your emergency supplies (see the list below).

#### *Emergency Supplies To Have On Hand:*

- \_\_\_ Flashlight with extra batteries
- \_\_\_ Portable radio with extra batteries
- \_\_\_ First aid kit
- \_\_\_ Emergency food & water (bottled water and food that doesn't require refrigeration or cooking)
- \_\_\_ Hand operated can opener
- \_\_\_ Essential medicines (at least a 5 day supply)
- \_\_\_ Cash & credit cards (to buy necessities for at least 5 days)
- \_\_\_ Sturdy shoes and work gloves

#### *During a Hurricane Watch*

\_\_\_ Check the radio, television, or internet for hurricane progress reports.

\_\_\_ Fill your cars with fuel. Keep in mind that there may be fuel shortages associated with an evacuation and plan accordingly. Consider leaving the area before a possible warning or evacuation.

\_\_\_ Store all outdoor objects like lawn furniture, toys, garden tools, outdoor plants etc, in a secure location, preferably in a garage or indoors. Anchor objects that cannot be brought inside.

\_\_\_ Install window protection.

\_\_\_ Move boats to a designated safe place, or moor them securely. Secure boats to trailer with chain or rope. Use tie-downs to anchor the trailer to the ground.

#### *During a Hurricane Warning*

\_\_\_ Keep your radio or television on to listen for updates and instructions from local officials.

(Continued on page 6)



**the  
Pool Nanny**  
Weekly & Vacation  
Swimming Pool  
Maintenance  
**281-858-4868**



**Custom Outdoors**  
Decks  
Shade Arbors  
Texas Porches  
Patios  
Outdoor Kitchens  
Flagstone  
Waterfalls  
Swimming Pools  
281-858-9696  
\*Extensive Online Photo Album\* [www.customoutdoors.com](http://www.customoutdoors.com)  
*Let Us Bring Your Outdoors To Life!*

# INNOVATION

*"If there's a better way to do it ...find it."*

Thomas Edison

*"Real estate is changing so often, you got to stay on top of it or you'll fall behind."*

Victoria Lioznyansky

**IT'S THE SPARK OF CREATIVITY** that fuels Victoria Lioznyansky in her real estate career. She knows what was effective in selling homes yesterday is old news today. Today's home buyers and sellers are more educated and sophisticated than in years past. So Victoria is driven to provide the level of service that you demand. Her desire to stay ahead of this constantly changing industry finds her searching for better, faster and smarter methods to get the job done.

**WHEN THOMAS EDISON** was developing the light bulb, the idea of using a filament didn't just pop into his head one day. He researched his plans for years, tested different elements and eventually discovered the parts that turned the lights on. Victoria Lioznyansky works the same way. Her years of business experience provide a solid foundation that gives her an understanding of market trends. Couple that with her practices of utilizing state-of-the-art computer technology, attending every new real estate course, producing high-impact marketing and advertising on the Internet, and you have an agent of the new Millennium.

**WHEN YOU NEED** to buy or sell a home, call the professional who treats this business like the sophisticated industry it has become. Give Victoria Lioznyansky a call and get ready to move over to the fast lane.



810 Hwy 6, Suite 100  
Houston, TX 77079

Sold@VictoriaTheRealtor.com  
www.VictoriaTheRealtor.com

281-782-9762

 **REALM**  
Real Estate Professionals



# Lakes on Eldridge North

## Hurricane Prep- (Continued from page 4)

- \_\_\_ Turn the refrigerator & freezer to the coldest settings and open only when absolutely necessary. This will keep food longer in the event of a power loss.
- \_\_\_ Fill all bathtubs, jugs, bottles, pots & pans with water.
- \_\_\_ Close chimney flues.
- \_\_\_ Get to shelter. When inside, avoid elevators and stay away from windows, skylights and glass doors.
- \_\_\_ IF POWER IS LOST, TURN OFF MAJOR APPLIANCES TO REDUCE POWER SURGE WHEN ELECTRICITY IS RESTORED.

## If You Must Evacuate:

- \_\_\_ Leave as soon as possible, avoiding flooded roads. Watch for washed out roads or bridges.
- \_\_\_ Unplug all appliances. Turn off electricity and main water valve.
- \_\_\_ Tell someone outside the storm area where you are going.
- \_\_\_ If time permits, elevate household items to keep them out of water in the event of flooding.
- \_\_\_ Take emergency supplies, warm protective clothing and blankets or sleeping bags with you.

- \_\_\_ Don't forget your cellular phone and battery pack for recharging.

- \_\_\_ Leave your cell phone number or phone number where you can be reached with a close LOE neighbor.

## After the Storm:

- \_\_\_ Avoid loose or dangling power lines and report them immediately to the power company, police or fire department.
- \_\_\_ Beware of snakes, insects or animals driven to higher ground by floodwater.
- \_\_\_ Check gas, electrical and water lines for damage. Wear heavy shoes and work gloves to protect against debris and broken glass.
- \_\_\_ Open windows and doors to ventilate and dry your home.
- \_\_\_ Listen to newscasts to see if water needs to be boiled or treated.
- \_\_\_ Check refrigerated foods for spoilage.
- \_\_\_ Carefully inspect your home for damage. If you sustain any damage from the storm, report it as soon as possible to your insurance agent.

*We Create Beautiful Smiles!*



**S.M. Shirazi, D.D.S.**  
*Cosmetic & Family Dentistry*

**713-466-3700**  
**5630 North Eldridge**

- ★ 12+ years in practice
- ★ New patients welcome
- ★ Emergencies seen same day
- ★ Payment plans available
- ★ Most insurance accepted
- ★ Movies available during treatment

**New Patient  
Special**

Exam, X-Ray, Cleaning

**\$100**

not applicable for insurance patients

**Bleaching  
Special**

(Reg. \$375)

**\$200**

good thru 8/31/07

**YARDMASTERS, Inc.**

*"Where Beautiful Lawns Begin"*

**281-469-5158**



Mulch - Flowers

Lawn Service - Clean Ups

**Landscaping**

Rock - Flagstone

Outdoor Lighting

Drainage Systems

Sprinkler Systems (LI 5455)

[www.yardmastersinc.com](http://www.yardmastersinc.com)



15420 Telge Road • SERVING NW HOUSTON SINCE 1990  
FINANCING AVAILABLE • INSURED FOR YOUR PROTECTION



# Have a Star-spangled Day!

This picture reminds me of reciting the Pledge of Allegiance in elementary school. As a real estate professional, I've made another pledge which is my commitment to help you sell your home as fast as possible for the best price!

*Call me for all your  
real estate needs-- whether you're  
buying, selling or relocating.*

## KAY HORSCH

*(And your neighborhood watch dogs)*

*Lakes on Eldridge  
Resident & Realtor*

**281-679-0101**

**kay@kayhorsch.com**



ROYAL OAKS

*Fine Properties*

11689 Westheimer, Suite C  
Houston, TX 77077  
RoyalOaksFineProperties.com



*“Providing a Lifestyle, not just an address...”*

# Lakes on Eldridge North

## Cy-Fair College, "Perspective"

### Prestigious Piper Professor Recipient is Jeff Edwards

Cy-Fair College Economics Professor Jeff Edwards is considered one of the best in Texas having recently been named a 2007 Piper Professor. This Minnie Stevens Piper Foundation honor is one of the most prestigious honors among Texas colleges and universities. Edwards is one of only 15 professors to receive the award, which is given in recognition of superior teaching at the college level. He is also one of six North Harris Montgomery Community College District winners of the Piper Professor Awards since its inception in 1958 and he is Cy-Fair College's second Piper Professor since the campus opened in 2002. His wife Susan Edwards was the first Cy-Fair College honoree. Edwards has also earned the Cy-Fair College's Faculty Excellence Award and numerous Phi Theta Kappa honors, including the society's most prestigious Mosal Award.

### Two Children's Summer Shows Set

Mark your calendars for two children's summer shows – "If You Take a Mouse to School" set June 25 – July 7 and "Tite Rouge set Aug. 6 – Aug. 18. For tickets and information on these performances, call 281-290-5201 or go online to [www.cy-faircollege.com/goto/cfcboxoffice](http://www.cy-faircollege.com/goto/cfcboxoffice).

### Self-Portrait Submissions Wanted

Get ready to submit your self-portrait for the Bosque Gallery's first ever open call self-portrait exhibition for all ages, all experience

levels, all mediums. Submissions will be accepted from noon to 7 p.m. June 7, June 12 and June 13 and from 10 a.m. to 4 p.m. June 14. Exhibition dates will be June 19 – July 12 in the Center for the Arts Bosque Gallery. All information and guidelines are posted at [www.cyfaircollege.com/bosquegallery](http://www.cyfaircollege.com/bosquegallery) or contact the gallery committee chair, Suzanne Shield-Polk at 281-290-3252.

### Teens driver's education available this summer

Summer driver's education courses for teens ages 15 to 17 are available at 4 p.m. and again at 6 p.m. Monday through Thursdays July 30 through Aug. 23. The in-classroom driver's education course covers road rules, road signs, and laws to prepare the teens for the Department of Public Safety's written exam. Other topics are car maintenance, effects of drugs and alcohol, laws and penalties for drinking and driving, emergency situations, basic driving procedures, road rage, and insurance. Parents are responsible for the in-car instruction. Students are required to purchase the Texas Traffic Safety Education Student Manual, which is available at the campus bookstore. Call 832-482-1043 for information.

### What's L.I.F.E. Like in June?

The Learning, Inspiration, Fellowship and Enrichment (L.I.F.E.) programs are free and held Wednesdays at 10 a.m. in the Cy-Fair College Branch Library (Room 131.) June programs include fitness

(Continued on page 9)

## Bashans Painting & Home Repair

Commercial/Residential  
Free Estimates

**281-347-6702**



**281-731-3383** cell



- Interior & Exterior
- 20 Years Experience
- Hardiplank Installation
- Wood Replacement
- Pressure Washing
- Sheetrock Repair & Texturing
- Cabinet Painting
- Door Refinishing & Replacement
- Wallpaper Removal
- Custom Staining
- Fence Replacement or Repair

**References Available • Fully Insured**  
**NO PAYMENT UNTIL COMPLETION**

[bashanspainting@earthlink.net](mailto:bashanspainting@earthlink.net)

- BRAKES
- TUNE-UPS
- AIR CONDITIONING
- STATE INSPECTIONS
- ELECTRICAL
- SUSPENSION
- ALIGNMENTS
- TRANSMISSIONS

**AUTO ✓ CHECK**  
**QUALITY CARE CENTER**

**COMPLETE CAR REPAIR FOREIGN & DOMESTIC**  
**FAMILY OWNED AND OPERATED SINCE 1995**

[www.autocheck7.com](http://www.autocheck7.com)

**6259 N. ELDERIDGE**  
**@ W. LITTLE YORK**

**PHONE: (713) 466-9300**

**LUBE OIL FILTER**

**\$9.95**  
**purchase**

**With \$100 or more**  
**in-service. (Most Cars)**

**FREE**

**TIRE ROTATION /**  
**BRAKE CHECK**

**For all 1st time customers.**  
**With this Coupon.**



## CyFair College - (Continued from Page 8)

success, Qigong, Dance Salad performance and online buying and selling tips. Call the library at 281-290-3213 for L.I.F.E. program information or check the library web page online at <http://cfclibrary.nhmccd.edu>.

## Library Offers Summer Reading Program, Free Computer Classes and Book Clubs

The Harris County Public Library Cy-Fair College Branch's 2007 Summer Reading Program includes storytime, movies, crafts, a computer kids program, a picnic, performers and more. The library also offers free computer workshops, including a family-friendly class. Topics range from basic computer functions to introductions to the Internet and various software programs. A variety of monthly book clubs are available including mystery, women of the world, democracy, and sports page. There are plenty of youth programs with activities and book clubs for teens and storytime for younger children. Go online to <http://cfclibrary.nhmccd.edu> for information.

**Advertise  
Your Business Here  
888-687-6444**

## TANNER LAKES ANIMAL CLINIC In Your Neighborhood!



*Kenneth Malinowski, D.V.M.*

*Only The Best  
For Your Best Friend*  
✓ Ultrasound  
✓ Telemedicine  
✓ Blood Pressures  
✓ Radiology (x-rays)  
✓ Tonopen (glaucoma)  
✓ Dental cleanings  
✓ Blood Pressures

- Dental Grading at no charge! Dental Estimates!
- Ask about our Shelter Adoption Package at no charge!
- Come by anytime for a tour and meet Dr. Malinowski!

**Office Hours**  
Mon, Wed, Fri 7am - 6pm  
Tues, Thurs 7am - 7pm  
Saturdays 8am - 1pm  
713/937-4484

## Celebrating 30 Years of Excellence The Branch School

*Where Children Love Learning  
Three years - 5<sup>th</sup> grade*

- Challenging academics in a nurturing environment
- Character education through peacemaking skills
- Hands-on environmental education in an award-winning Outdoor Classroom

2006 Teacher of the Year Award - The Christa McAuliffe  
In Search of Excellence Award - Houston West Chamber of Commerce  
2005 Lucie Wray Todd Environmental Education Award - Houston  
Audubon Society

*Accredited by Southern Association of Colleges and Schools*

**Now Enrolling  
2007-2008**



1424 Sherwood Forest  
Houston, Texas 77043  
713-465-0288  
Applications accepted year-round  
Call for a tour and information.



**Yorkshire  
Academy**

*Learning for a Lifetime*



**Complete  
Summer Program  
on the Web!**

**2007/2008 School Year  
Registration Online!**

*Come visit and see why 22 students  
from your neighborhood  
choose to attend Yorkshire Academy!*

**State-of-the-Art Facility!**

**Elementary • Preschool • MDO**

14120 Memorial (1 blk west of Kirkwood)

**281-531-6088**

Fully Accredited  
[www.yorkshire-academy.com](http://www.yorkshire-academy.com)

Est. 1984  
email: [yorkaca@swbell.net](mailto:yorkaca@swbell.net)

**[www.TheBranchSchool.org](http://www.TheBranchSchool.org)**

# Lakes on Eldridge North

## Did You Know? Fun Facts!



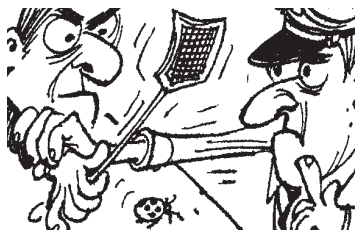
*The smallest plane ever flown is the Bumble Bee Two, designed and built by Robert H. Starr of Arizona. It was 8 feet 10 inches long with a wingspan of 5 feet 6 inches.*



*There are approximately 100 million head of cattle on U.S. farms.*



*The minimum pool depth required for international water polo matches is 6 feet.*



*Delaware's state insect is the ladybug.*

## Summer Camps at Cypress Christian School

Cypress Christian School will once again host summer camps for children and adults in the community.

**Camp Invention - June 4 - 8:** This is a week-long summer enrichment program in the fields of science, mathematics, history, and the arts for children entering grades 1 - 6.

**Computer Explorers Summer Camp - June 11 - 15:** During this week-long summer camp, elementary students will discover how to become Master Builders with hands-on exploration of engineering, construction, and programming.

**High Touch - High Tech Science Camp - June 18- 22:** This is a one-week session that brings a child's imagination to life as he/she enjoys a variety of interactive, science-related activities. It will be an inspiring week of fun and learning!

**St. Thomas University Summer Reading Enrichment Program - June-August:** CCS will host this program again this summer. It is scheduled to run from June to early August and is available to children and adults.

### Sports Camps - June-July

• **Volleyball Camps** - Most Mondays and Fridays from June 4 through July 30

Students of all grade levels are encouraged to attend to improve skill levels and knowledge of the game.

All grade levels through grade 8 (2007-2008) - 5:30 to 7:00 p.m. (Students in grades 6-8 can qualify for the Advanced session upon recommendation by the Coach)

Grades 9-12 (2007-2008) - 7:00 - 9:00 p.m.

• **Basketball Camps** - The main purpose of the camps is to teach the fundamentals of dribbling, shooting, passing, and defense, while also developing self-confidence and a positive mental attitude.

• **CCS Basketball Camp 1**, June 18 - 21, 9:00 a.m. to 12:00 p.m. (Camp 1 is for students entering 2nd- 6th)

• **CCS Basketball Camp 2**, June 25 - 28, 9:00 a.m. to 12:00 p.m. (Camp 2 is for students entering 7th-12th)

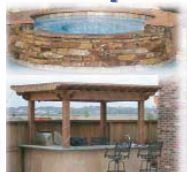
• **Sports Quest Soccer Camp** - June 25 - 29, 5:30 p.m. to 8:30 p.m.



Family, Friends, and Your Backyard.



## A recipe for relaxation, just add water.



• Custom Swimming Pools & Renovations  
• Pool Repair & Service • Outdoor Kitchens • Cabanas

713-869-SWIM (7946)

ParagonPool.com

# HOME PRICES *have gone up!*

For the period of 1/1/2007-3/31/2007	Total # of Homes Sold	\$/sqft
LOEN	14	\$110.6
LOE	8	\$110.3

Buyers are actively looking for homes  
in our neighborhood! Inventory is low!  
*If you are considering selling your home, please call me first!*



## Danielle Gebara

Direct: 832-788-6002

Off: 281-664-8300 Ext. 3153

dgebara@houston.rr.com

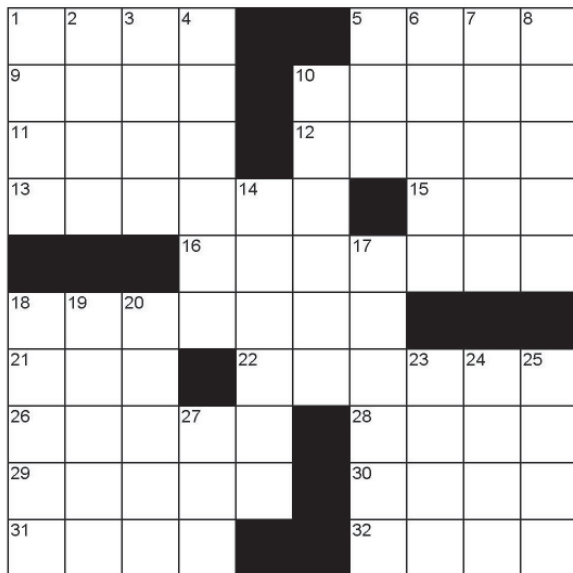


## *Because every move matters!*



# Lakes on Eldridge North

## Crossword Puzzle



### ACROSS

1. Give off
5. Catholic worship service
9. Earring need
10. Produce eggs
11. Den
12. Lucky number
13. Make dear
15. Lyric poem
16. Computer copier
18. Canadian province
21. Animal foot
22. National capital
26. Ills
28. Giant
29. Angers
30. Approach
31. As well as
32. See

### DOWN

1. Women's magazine
2. Complain
3. As previously cited
4. Mother \_\_\_\_
5. Miles per hour
6. Baseball player Hank \_\_\_\_
7. Swedish citizen
8. Smile scornfully
10. Channel
14. On the opposite side
17. Nary (2 wds.)
18. Musical production
19. Having to do with the navy
20. Brand of stick-like crackers
23. Gets older
24. Wind
25. Airy
27. MGM's Lion

© 2006, Feature Exchange

\* Solution can be found at [www.peelinc.com](http://www.peelinc.com)

## Teenage Jobseekers

Not Available Online



**Platinum Dealer**  
GE  
Water & Process Technologies

Ask about our "Don't lift a Finger  
Maintenance Program".  
Friendly Service  
& Low Prices.

## Water Softener & Reverse Osmosis Maintenance, Repair, Sales & Service

Filters available for most systems.



**Advanced Water Solutions**  
**281-469-9227**

GE Water has over 500 US Certified Platinum Dealers. We were one of only 5 dealers awarded the  
"Outstanding customer support, sales & service" plaque for 2005 and 2006.  
Licensed and Insured Water Treatment Specialist No. WT0001839



## The Pearl Days Bus Trip to the Museum of Fine Arts Houston

The Pearl Fincher Museum of Fine Arts-Cypress Creek is offering northwest residents a bus excursion to the Museum of Fine Arts, Houston on Friday, June 29, 2007.

The MFAH is currently showcasing several exhibits including: The Great Wall of China: Photographs by Chen Changfen, Arms and Armor from the Ancient World and Fit for a King: English Silver from the Collection of Geroge S. Heyer, Jr.

Participants will have the opportunity to attend a private docent-conducted tour of the exhibition at 10:30 a.m. as well as the noon Lunchtime Tour of Highlights of the European Galleries.

The bus leaves the parking lot behind the Cypress Creek Christian Church/Barbara Bush Library at 6815 Cypresswood Drive promptly at 9:00 a.m. Participants must be 50 years of age or older to ride the bus. If

you are under the age of 50, we encourage you to carpool and meet the bus at MFAH. The Pearl Days Bus Trip is sponsored by the Volunteer organization for The Pearl Fincher Museum of Fine Arts-Cypress Creek. A \$5.00 non-refundable donation to The Pearl Fincher MFA will reserve your seat.

It's your museum! The renovation process of turning what once was the Harris County Library into a world class museum of fine arts is underway. Don't miss your chance to become a part of this exciting time. Participating in Pearl Days is one way you can show your support of our new museum. Don't miss the bus! Reserve your seat today by calling Laura Barousse at 281-370-5474 or Judi Redilla at 281-469-3434.

Visit online at [www.pearlmfa.org](http://www.pearlmfa.org) to find out more ways you can support The Pearl and about upcoming events.

## Classifieds

**Rainbow Castle Super - Sized Swing Set** w/slide, rope ladder, rock wall, trapeze bar, tire swing, 3 swing positions. Two years old. Original cost \$4,000. Asking \$1,950. 713-896-7680 or email [ljordan@houston.rr.com](mailto:ljordan@houston.rr.com)

The Lakes on Eldridge North is a private publication published by Peel, Inc. It is not sanctioned by any homeowners association or organization, nor is it subject to the approval of any homeowners association or organization, nor is it intended, nor implied to replace any publication that may be published by or on behalf of any homeowners association or organization. At no time will any source be allowed to use the Lakes on Eldridge North Newsletter contents, or loan said contents, to others in anyway, shape or form, nor in any media, website, print, film, e-mail, electrostatic copy, fax, or etc. for the purpose of solicitation, commercial use, or any use for profit, political campaigns, or other self amplification, under penalty of law without written or expressed permission from Peel, Inc. The information in the Lakes on Eldridge North Newsletter is exclusively for the private use of Peel, Inc.

## Imagine enjoying that healthy Spring Clean feeling all year long.

Know how good it feels when you throw open the doors and windows and let in that fresh clean feeling of Spring?

Call in The Maids, and start enjoying the healthiest, most thorough housecleaning you've ever had — without lifting a finger!

- ✓ Our 22-Step Healthy Touch® Deep Cleaning System is designed to cover every available area of your home. It's the most thorough program in the entire industry.
- ✓ Our highly trained, bonded and insured teams will clean your kitchen and bathroom floors on hands and knees, the surest way to get them really clean.

In fact, we're so thorough, research shows that 96% of our current customers would recommend us to their friends and neighbors!

\* NO PURCHASE NECESSARY. A PURCHASE WILL NOT INCREASE YOUR CHANCES OF WINNING. LEGAL RESIDENTS OF THE 50 UNITED STATES (D.C.) AND CANADA 18 YEARS AND OLDER. VOID IN MB, NB, NL, PE, QC, SK AND WHERE PROHIBITED. Promotion ends 5/31/07. For Official Rules, prize descriptions and odds disclosure, visit [www.maids.com](http://www.maids.com). If you would like your name removed from Sponsor's mailing list call 1-800-THE-MAIDS and your name will be removed within 60 days of the request. Sponsor: The Maids International, Inc., 4820 Dodge Street, Omaha, NE 68132, U.S.A.

You could win up to a year of FREE housecleaning!



Enter at [www.maids.com](http://www.maids.com)\*

5 Grand Prizes – One year of FREE housecleaning

10 First Prizes– FREE flights on Southwest Airlines

Instant Winners every day – FREE housecleaning, magazine subscriptions and more

100% Satisfaction Guarantee

Call today for a free estimate.

**832-593-7500**



# The Maids® Home Services

Nobody Outcleans The Maids®



# Lakes on Eldridge North

## Garage Doors Certainly are "Beasts of Burden"

*Submitted by Bill Cook*

One of the most ignored and overlooked maintenance components of your home is your garage door and opener. These "beasts of burden" are frequently ignored, neglected and taken for granted...that is until they stop working.

An average two-car garage door has nearly forty moving parts and weighs approximately 300 pounds. When in the up position, the door is usually 8 feet above the floor with your second most expensive investment parked directly underneath. Last year approximately 20,000 garage door related injuries were treated in America's emergency rooms.

Given these facts, proper maintenance and repair should be a higher priority on our never-ending "to do lists".

Basic routine maintenance should be performed every six months to maximize performance and extend the life of the moving parts of your garage door(s). While repairs should be left to the professionals, the following activities should be completed every six months:

### **Door:**

1. Lubricate hinge joints with a silicone-based lubricant. Be careful in selecting a product as many common spray lubricants are alcohol-based and can actually dry out moving parts.
2. Do not lubricate track and rollers. This common misconception only serves to attract dust particles and cause further wear. While it does appear to be a short-term fix, over that

short time, problems will become worse.

3. Release the door from the opener by disengaging the trolley (pull the red string down). \* Raise the door to the halfway point. A properly balanced door should remain in that position. If the door falls or rises on its own this is a symptom of spring failure. Improperly balanced garage doors can cause opener and/or door damage. \* Raise and lower the door manually. The door should require no more than ten pounds of force to raise. This is the maximum weight residential openers are designed to raise. Clacking, screeching or popping sounds also indicate moving parts failure. \* Please Do Not attempt any repairs as certain garage door components can cause serious injury!

### **Opener:**

1. Chain and belt drive openers should have a light coating of silicone-based lubricant sprayed on the boom (bar from the motor unit to the door) twice per year.
2. If the system has safety eye sensors (located at the bottom of the door tracks), make sure these are properly aligned and free of dust and debris. An obstruction could stop the opener from closing the door.

**POWER SURGES** to your home can severely damage the electronics of electric door openers. Should your opener operate erratically, **DO NOT** attempt to continue using it as it may damage your garage door.

It is always wiser to error on the side caution concerning this large, heavy moving wall in your home.

## Classified Ads

**Business Classifieds** are \$50.00. Please contact Peel, Inc Sales 888-687-6444 or [advertising@PEELinc.com](mailto:advertising@PEELinc.com).

**DISCLAIMER:** Articles and ads in this newsletter express the opinions of their authors and do not necessarily reflect the opinions of Peel, Inc. or its employees. Peel, Inc. is not responsible for the accuracy of any facts stated in articles submitted by others. The publisher also assumes no responsibility for the advertising content with this publication. All warranties and representations made in the advertising content are solely that of the advertiser and any such claims regarding its content should be taken up with the advertiser.

\* The publisher assumes no liability with regard to its advertisers for misprints or failure to place advertising in this publication except for the actual cost of such advertising.

\* Although every effort is taken to avoid mistakes and/or misprints, the publisher assumes no responsibility for any errors of information or typographical mistakes, except as limited to the cost of advertising as stated above or in the case of misinformation, a printed retraction/correction.

\* Under no circumstances shall the publisher be held liable for incidental or consequential damages, inconvenience, loss of business or services, or any other liabilities from failure to publish, or from failure to publish in a timely manner, except as limited to liabilities stated above.

Maximize your home's  
sale price with  
maximum advertising!

**Kevin  
Starr** ★  
GRI



*My listings are on 28 web sites*

*Multiple Virtual Tours: Slide Show Tour & Voiced-over Guided Tour*  
*2 Houston Real Estate Magazines*

*Free Property Evaluation*

*Multi-Million Award Winner*

*Top Customer Service Award Winner*

**Direct: 713.412.0237**

**[kstarr@cbunited.com](mailto:kstarr@cbunited.com)**



Each Office is Independently Owned and Operated



# HOUSTON'S BEST



The Houston Business Journal  
ranks the David Young Team  
#4 in Houston for sales  
volume in 2006, exceeding  
\$108 million in home sales.

Prestige and Professionalism.  
right here in your community!

*When you're ready to sell your home...  
For world class service, please contact:*

## CLIVE & NANCY GARDNER

Lakes on Eldridge Resident Realtors®

**Clive: 281-460-3168**

[cgardner@coldwellbankerunited.com](mailto:cgardner@coldwellbankerunited.com)

**Nancy: 713-870-3169**

[ngardner@coldwellbankerunited.com](mailto:ngardner@coldwellbankerunited.com)

[www.davidyoungteam.com](http://www.davidyoungteam.com)

14201 Memorial Drive, Suite 202, Houston, TX 77079



**UNITED, REALTORS®**

# Lakes on Eldridge North

## Texas Events - June 2007

1-2, 8-10, 15-16—BAYTOWN: Wait Until Dark Baytown Little Theater. 281/424-7617

1-17—HOUSTON: Spamalat Based on the classic film comedy Monty Python and the Holy Grail. Hobby Center for the Performing Arts. www.tuts.com 713/558-TUTS or 888/558-3882

1-23—PORT ISABEL: Full Sails, Full Nets: Fishing the Texas Scow Sloop Includes photographs, artifacts, a replica of the scow sloop and more. Museums of Port Isabel. www.portisabelmuseums.com 956/943-7602

1-Jul. 1—ROCKPORT: Life on a Rig Exhibits work by renowned oilfield photographer Miek Mahi. Texas Maritime Museum. 361/729-1271 or 713/661-9440

1-Jul. 8—BEAUMONT: George Tobolowsky: Sculpture This Dallas artist transforms steel into whimsical and curvilinear forms. McFaddin-Ward Gallery, Art Museum of Southeast Texas. www.amset.org 409/832-3432

1-Sep. 3—CORPUS CHRISTI: Flamingo Fandango! See the flamingo flock with more than 200 classic yard flamingos, plus more flamingos theme-designed and dressed by area artists. South Texas Botanical Gardens & Nature Center. www.stxbot.org 361/852-2100

1-Oct. 31—CORPUS CHRISTI: Surfin' thru the '70s New exhibit celebrates surf culture in Texas and beyond during the grooviest decade. Texas Surf Museum, 309 N. Water St. 361/888-7873 or 361/882-2364

2, 9, 16, 23, 30—PASADENA: Armand Bayou Ranger 28-foot Pontoon Boat Experience Guided tours are offered for either a morning breakfast cruise or sunset cruise. Reservations and advance payment required. www.abnc.org 281/474-2551

2, 9, 16, 23, 30—WHARTON: Wharton County Farmers' Market Hours are 9 a.m. to noon. Courthouse Square, Historic Downtown Wharton. www.whartoncountymarket.com 713/553-7882

2-Aug. 31—PORT ISABEL: Photography by Valerie Bates Museums of Port Isabel Special Exhibit. www.portisabelmuseums.com

5, 12, 19, 26—EL CAMPO: Farmers Market Downtown Evans Park. 979/543-2713

7, 9-10, 15-17—HOUSTON: Coppelia Wortham Theater Center. www.houstonballet.org 713/227-2787

8—HOUSTON: Summer Dance with Houston Met Offers high-energy dance ranging from jazz and modern to tap and hip hop. Begins at 8 p.m. Miller Outdoor Theatre, Hermann Park. www.milleroutdoortheatre.com 281/373-3386

8—PEARLAND: Summer Concert Series: Mango Punch Features Latin, Salsa and pop. Pearland's Southdown Park. www.pearlandparks.com 281/652-1673

8-9—SEADRIFT: Shrimpfest 361/785-2251 ext. 21

8-10—TEXAS CITY: Funfest Enjoy a barbecue cook-off, arts & crafts, entertainment, car show, children's activities and more. Nessler Park. www.texascitychamber.com 409/935-1408

9—BEAUMONT: Spindletop Spin Bike Ride Includes 10-, 45- and 72-mile rides through scenic byways. Enjoy all-day festivities at the starting point on Crockett Street. www.spindletopspin.com 409/839-2332

9—DACOSTA: Volunteer Fire Department Annual BBQ & Auction Sons of Hermann Hall. 361/575-2959

9—EAST BERNARD: 17th Annual Czech Kolache Klobase Festival Offers plenty of music, dancing and lively entertainment. Includes arts & crafts, plate lunch, hamburgers, raffle prizes, cake walk, kid games, plenty of kolaches for sale and family fun. www.kkfest.com 979/335-4827 or 979/335-7907

9—FULTON: 4-H Wild Game Dinner Includes dinner, live auction and dance. Paws & Taws Convention Center. E-mail: pawsandtaws@charterinternet.com 361/729-2388

9—HOUSTON: Anything That Floats Parade & Family Day on Buffalo Bayou Buffalo Bayou becomes an exhibition space for unique sculpture and artistry displayed in this water parade. www.buffalobayou.org 713/752-0314

9—HOUSTON: Second Saturday of the Month Boat Cruise along Buffalo Bayou No reservations. www.buffalobayou.org 713/752-0314 ext. 3

9—HOUSTON: The Kings & Queens of Spoken Word Offers an evening of poetry, storytelling, music, hip-hop and more. Miller Outdoor Theatre, Hermann Park. www.milleroutdoortheatre.com 281/373-3386

9—KATY: Kid's Day Offers outdoor fun for the junior sportsperson. Bass Pro Shops Katy. www.basspro.com 281/644-2200

9-10—REFUGIO: Back Thru Time History Celebration E-mail: bea@asksam.com

9-Jul. 8—GALVESTON: Sandria Hu — Fragments Features recent works on panel by this Chinese-American artist and professor at the University of Houston — Clear Lake. www.galvestonartscenter.org 409/763-2403

10—ALVIN: Tour de Braz Offers five bike rides ranging from 10 to 100 miles. Alvin Community College. www.alvintexas.org

10—HOUSTON: Fourth Annual Classy Chassis Vintage Auto Show

(Continued on page 17)



## Buds & Blossoms, Inc.

Full Service Landscape Year Around

Since 1989

# 281-469-3378

14120 Cypress North Houston

in Cypress between Telge & Huffmeister

BudsandBlossoms1@aol.com



**Landscape**  
Design & Installation

**Sprinkler Systems**  
License#5490

**Sod Installation**  
Drainage

**Flagstone**  
Custom Rockwork

**GARDEN CENTER COUPON**

Take \$3.00 off each flat of regularly priced annuals  
**WITH COUPON \$11.99**  
one coupon per customer/no limit  
Reg. \$14.99 exp. 6/30/07

**GARDEN CENTER COUPON**

**10% off your next garden center purchase**  
ROCK NOT INCLUDED  
Must present coupon before order is rung  
exp. 6/30/07

# Lakes on Eldridge North

## Texas Events- (Continued from page 16)

Showcases more than 100 vintage American and European icons, rare and exotic hand built sports cars, hot rods and full-out racing machines. Hours are 10 a.m. to 6 p.m. Reliant Stadium. [www.classychassis.org](http://www.classychassis.org) 713/838-9050

11—FULTON: Music at the Mansion Begins at 7 p.m. Fulton Mansion State Historic Site. 361/729-0386

11, 25—HOUSTON: Hear Ye! Hear Ye! Artists younger than age 18 give a 45-minute program of classical music. Miller Outdoor Theatre, Hermann Park. [www.milleroutdoortheatre.com](http://www.milleroutdoortheatre.com) 281/373-3386

13—SAN BENITO: El Second Weensdee Enjoy an oral history series on conjunto music. Begins at 7 p.m. The Narciso Martinez Cultural Art Center. 956/361-0110

14-Aug. 2—NASSAU BAY: Summer '07 Open Juried Exhibition Features juried works by area artists in all media. The Arts Alliance Center at Clear Lake. [www.taaccl.org](http://www.taaccl.org) 281/335-7777

15—HARLINGEN: 13th Annual Jack Boggus Memorial Golf Classic Treasure Hills Golf Course. 956/994-1121

15—PEARLAND: Summer Concert Series: Russell Ray Features country music. Begins at 7 p.m. Pearland's Southdown Park. [www.pearlandparks.com](http://www.pearlandparks.com) 281/652-1673

15-16, 22-23—HOUSTON: Target Summer Symphony Nights Begins at 8:30 p.m. Miller Outdoor Theatre, Hermann Park. [www.milleroutdoortheatre.com](http://www.milleroutdoortheatre.com) 281/373-3386

15-17—GALVESTON: The Jubilee Banjo Band The Grand 1894 Opera House. [www.thegrand.com](http://www.thegrand.com) 800/821-1894

116—BEAUMONT: Bringin' Back Memories Car Show Open to any street legal vehicle. Hours are 9 a.m. to 2 p.m. Crockett Street Entertainment District. 409/838-2508

16—GALVESTON: Summer Fishing Fun Learn to fish in a fun, safe, kid-friendly environment. Begins at 9 a.m. Galveston Island State Park. 409/737-1222

16—HARLINGEN: Blues on the Hill Hours are 6 to 10 p.m. McKelvey Park, 1325 S. 77 Sunshine Strip. 956/216-5952

16—PORT ARTHUR: Cayman Night in Port Arthur Island-style party is complete with reggae music, limbo dancing and more. Carl Parker Center/ Lamar College. E-mail: [pacc@portarthurtexas.com](mailto:pacc@portarthurtexas.com) 409/963-1107

16—PORT ARTHUR: Gator Spotlight Count Reservations required. J.D. Murphree Wildlife Management Area. 409/736-2551 ext. 23 or ext. 25

16—WEST COLUMBIA: Juneteenth Memorial Honors those who were enslaved and those who died during the Middle Passage. Hours are 8 a.m. to 5 p.m. Varner-Hogg Plantation State Historic Site. 979/345-4656

16-17—EL CAMPO: Ricebelt Antique Tractor Show & Pull Features arts & crafts, vendor and food booths, kiddie and lawnmower pulls and more. American Legion Expansion Grounds, Hwy. 71 S. E-mail: [sherry\\_rrprint@sbcglobal.net](mailto:sherry_rrprint@sbcglobal.net) 979/543-9498

16-17—PORT NECHES: Trade Days Port Neches Avenue. E-mail: [pncoc@swbell.net](mailto:pncoc@swbell.net) 409/722-4023

17-23—VICTORIA: Victoria Bach Festival Leo J. Welder Center for the Performing Arts and other venues. [www.victoriabachfestival.org](http://www.victoriabachfestival.org) 361/570-5788

(Continued on page 18)



**ADVERTISE HERE**  
**888-687-6444**  
[www.PEELinc.com](http://www.PEELinc.com)

**PEEL, INC.**  
PRINTING & PUBLISHING  
EST. 1977

## Peel, Inc.

### Printing & Publishing

Publishing community newsletters since 1991

## Support your neighborhood newsletter.

**Kelly Peel**

Sales Manager

512-989-8905

[kelly@PEELinc.com](mailto:kelly@PEELinc.com)



## Advertise your business to your neighbors.

**1-888-687-6444**

[www.PEELinc.com](http://www.PEELinc.com)



# Lakes on Eldridge North

## Texas Events- (Continued from page 17)

19—HOUSTON: Juneteenth Celebration Includes blues, gospel and jazz performers, plus smaller events. Miller Outdoor Theatre. [www.milleroutdoortheatre.com](http://www.milleroutdoortheatre.com) 281/373-3386

19—PORT ARTHUR: Juneteenth Celebration Includes a pageant Friday, lecture series on Saturday, gospel fest on Sunday and parade on Monday. Downtown. E-mail: [gailpellum@yahoo.com](mailto:gailpellum@yahoo.com) 409/982-8040 or 409/982-5457

21—HOUSTON: African Tales & Rhythms Miller Outdoor Theatre, Hermann Park. [www.milleroutdoortheatre.com](http://www.milleroutdoortheatre.com) 281/373-3386

21-22—GALVESTON: B.B. King Begins at 8 p.m. The Grand 1894 Opera House. [www.thegrand.com](http://www.thegrand.com) 800/821-1894

22—PEARLAND: Summer Concert Series: Wilfred Chevis Features zydeco music. Pearland's Southdown Park. [www.pearlandparks.com](http://www.pearlandparks.com) 281/652-1673

22-23—WHARTON: Wharton County Freedom Fest Annual barbecue cook-off begins Friday. Festival on the Historic Courthouse Square kicks off Saturday with the Veterans Memorial and parade at 4 p.m. Enjoy food and vendor booths, then dance under the stars with The Triumphs Band. Riverfront Park. 979/532-0927

23—HOUSTON: Houston Pride Parade GLBT parade blends light, color and sound with beautiful floats, costumes and performances. [www.pridehouston.org](http://www.pridehouston.org) 713/529-6979

23-24—HOUSTON: ClayHouston Festival Artists demonstrate and discuss their individual approaches and techniques for creating ceramic art. Includes a table where children make objects. Houston Center for

Contemporary Craft. [www.clayhouston.com](http://www.clayhouston.com) 713/263-1919

24—HOUSTON: Early Irons in Texas Swap Meet Sam Houston Race Park Horse Track. [www.swapmeettexas.com](http://www.swapmeettexas.com)

26-Jul. 8—HOUSTON: Sweet Charity E-mail: [tuts@tuts.com](mailto:tuts@tuts.com) • [www.tuts.com](http://www.tuts.com) 713/558-TUTS or 888/558-3882

28—HOUSTON: Street Beat Begins at 8 p.m. Miller Outdoor Theatre. [www.milleroutdoortheatre.com](http://www.milleroutdoortheatre.com) 281/373-3386

28—PORT ISABEL: Oral History Program: Telling Our Stories Begins at 7 p.m. Treasures of the Gulf Museum. [www.portisabelmuseums.com](http://www.portisabelmuseums.com) 956/943-7602

29—PEARLAND: Summer Concert Series: Local Church Bands Begins at 7 p.m. Pearland's Southdown Park. [www.pearlandparks.com](http://www.pearlandparks.com) 281/652-1673

30—EDNA: Fun & Games Fourth of July Celebration Enjoy sack races, water balloon toss, horseshoes, volleyball, watermelon-eating contest, dunking booth and more. Lake Texana State Park. 361/782-5718

30—HOUSTON: Movies & Music of the Motherland Features pieces from southern, eastern and western African traditions. Miller Outdoor Theatre, Hermann Park. [www.milleroutdoortheatre.com](http://www.milleroutdoortheatre.com) 281/373-3386

30—KEMAH: Classic Car Show From 1920s-1970s. Kemah Boardwalk. [www.kemahboardwalk.com](http://www.kemahboardwalk.com) 281/334-9880

*Texas Events has been published with the permission of the Texas Department of Transportation. All events are taken in part from the Texas Events Calendar. All dates for events were correct at the time of publication and are subject to change.*

# Peel, Inc.

## Printing & Publishing

Publishing community newsletters since 1991

We currently publish newsletters  
for the following subdivisions in Houston:

Berkshire  
Coles Crossing  
Cypress Mill  
Fairfield  
Hambeldon-Briarchase  
Harvest Bend, The Village  
Hastings Green  
Kings Manor  
Lakes of Bridgewater  
Lakes on Eldridge  
Lakes on Eldridge North  
Lakewood Grove  
Legends Ranch  
Longwood  
Oakwood Glen  
Park Lakes

Riata Ranch  
Ridge Lake Shores  
Riverstone Ranch  
Steeplechase  
Summerwood  
Village Creek  
Waterford Harbor  
Westheimer Lakes  
Willowbridge  
Willowlake  
Willow Pointe  
Winchester Country  
Winchester Trails  
Windermere Lakes  
Wortham Village



**1-888-687-6444**  
**[www.PEELinc.com](http://www.PEELinc.com)**

**Kelly Peel, Sales Manager**  
**[kelly@PEELinc.com](mailto:kelly@PEELinc.com)**



# Tim Ziifle

**KNOWLEDGE + EXPERIENCE = RESULTS!**

**N. Eldridge Specialist & Lakes On Eldridge Homeowner**

*If you are seeking a proven real estate professional to...*

- ◆ FIND A BUYER FOR YOUR HOME WITHIN YOUR REQUIRED TIME FRAME
- ◆ PROVIDE A DETAILED ACCURATE ASSESSMENT OF YOUR HOME'S CURRENT MARKET VALUE
- ◆ HELP YOU TO STAGE YOUR HOME TO ENSURE MAXIMUM APPEAL TO PROSPECTIVE BUYERS
- ◆ PROVIDE YOU WITH EXPERT ADVICE AND GUIDANCE THROUGHOUT THE ENTIRE PROCESS

Please give me a call at:

**(832) 457-1989**

- ◆ BROKER, REALTOR® WITH OVER 25 YEARS OF PROVEN SUCCESS
- ◆ YOU DEAL DIRECTLY WITH ME - NOT MY SECRETARY OR ASSISTANTS
- ◆ CENTURY 21 "TOP PRODUCER" 2002, 2003, 2004, 2005, 2006
- ◆ CERTIFIED RESIDENTIAL SPECIALIST (HELD BY ONLY 4% OF REALTORS®)



- ◆ ACCREDITED LUXURY HOME SPECIALIST



- ◆ ACCREDITED SELLER REPRESENTATIVE



- ◆ CERTIFIED MEMBER INSTITUTE OF RESIDENTIAL MARKETING



- ◆ ACCREDITED BUYER REPRESENTATIVE



- ◆ RESIDENTIAL CONSTRUCTION CERTIFIED



- ◆ CERTIFIED NEW HOME SPECIALIST



- ◆ E-PRO CERTIFIED



[www.har.com/timziifle](http://www.har.com/timziifle)

E-mail: [tcziifle@msn.com](mailto:tcziifle@msn.com)

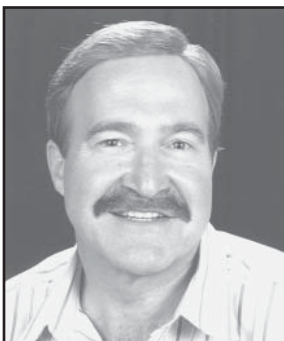
[www.realtor.com/houston/ziifle](http://www.realtor.com/houston/ziifle)



**THE MORTON GROUP**  
 14525 FM 529, SUITE 200  
 HOUSTON, TEXAS 77095



**#1 In LAKES ON ELDRIDGE SALES**  
**★ LAKES ON ELDRIDGE HOMEOWNER ★**



**STEVE**  
**HARDCASTLE**



**RE/MAX Westside Realtors**  
**281-925-3047**

**[www.stevehardcastle.com](http://www.stevehardcastle.com)**

- **RE/MAX Westside #1 TOP PRODUCER for 18 years ('89 – '06)**
- **Top Twenty Realtors in Houston-out of over 20,000 HAR members (Per Houston Business Journal)**
- **Top 1% of all Realtors in North America (1989-2006)**
- **Top Twenty RE/MAX agents in Houston Area (out of 1700 agents)**
- **Chairman's Club; Hall of Fame; Lifetime Achievement Award**
- **Certified Residential Specialist (held by only 4% of Realtors)**
- **Broker; Relocation Expert; 25 years of real estate experience**

**Site for Neighborhood News & Photos**

**[www.loenorthnews.com](http://www.loenorthnews.com)**

**Peel, Inc.**

203 W. Main Street, Suite D  
Pflugerville, Texas 78660

PRSRT STD  
U.S. POSTAGE  
PAID  
PEEL, INC.

☎ **Voice 512-989-8905**

💻 **[www.PEELinc.com](http://www.PEELinc.com)**

LN