

# The LONGWOOD Letter

June 2008

Volume 2, Issue 6

News For The Residents of Longwood

## Cypress-Fairbanks ISD Honors Volunteer Award Winners



*Pictured from left: Reginald Lillie, Chairman of the Board of the Cy-Fair Houston Chamber of Commerce; Ms. Audrey Ayers and Mr. Ed Station of Station & Ayers Insurance Services; Leslie Martone from the Cy-Fair Credit Union; Pam Wells, CFISD Associate Superintendent for General Administration; Erin Al-Salman, President of the Cy-Fair Houston Chamber of Commerce; Barbara Johnson, Media Specialist at Emmott Elementary School; Lisa Underwood; and Pam Scott, CFISD Director of Partners in Education.*

Cypress-Fairbanks Independent School District honored its district and state volunteer award winners during a Volunteer Appreciation Month ceremony on April 24. The award winners were nominated by various schools in the district at which the volunteers donate their time and were anonymously judged by a panel of school district employees and

business partners. These extraordinary men and women were first selected as our district award winners and then competed against others in their categories from large districts at the state level, and each of them were honored with the state's highest awards as well. The state award winners were recognized by the Texas Association of Partners in Education

*(Continued on page 2)*



WRAP is Cy Woods High School's chemical and drug free party to be held right after prom. This newly formed organization has started meeting to plan the event for the class of 2009. Please join us!! Start earning WRAP Bucks for your student! Website under construction at [www.cywoodswrap.org](http://www.cywoodswrap.org)

### General Meetings:

May 13th – 6:00 pm

June 10th - 7:00 pm

July 8th - 7:00 pm

\* The above listed meetings will be held at Cy Woods High School Commons.

***Don't want to wait  
for the mail?  
View the current  
issue of the  
Longwood Letter on  
the 1st day  
of the month at  
[www.PEELinc.com](http://www.PEELinc.com)***

# LONGWOOD LETTER

## IMPORTANT NUMBERS

### EMERGENCY NUMBERS

EMERGENCY .....	911
Fire .....	911
Ambulance .....	911
Constable .....	281-376-3472
Sheriff - Non-emergency .....	713-221-6000
- Burglary & Theft .....	713-967-5770
- Auto Theft .....	281-550-0458
- Homicide/Assault .....	713-967-5810
- Child Abuse .....	713-529-4216
- Sexual Assault/Domestic Violence .....	713-967-5743
- Runaway Unit .....	713-755-7427
Poison Control .....	800-764-7661
Traffic Light Issues .....	713-881-3210

### SCHOOLS

Cypress Fairbanks ISD Administration .....	281-897-4000
Cypress Fairbanks ISD Transportation .....	281-897-4380
Cypress Fairbanks Senior High .....	281-897-4600
Goodson Middle School .....	281-373-2350
Hamilton Elementary .....	281-370-0990

### OTHER NUMBERS

Animal Control .....	281-999-3191
Cypress Fairbanks Medical Center .....	281-890-4285
Harris County Health Department .....	713-439-6260
Post Office Box Assignment – Cypress .....	1-800-275-8777
Street Lights - CenterPoint Energy .....	713-207-2222
- not working (Report Number on Pole)	
Trash Removal .....	281-446-2030

### NEWSLETTER PUBLISHER

Peel, Inc. ....	1-888-687-6444
Article Submissions .....	longwoodletter@PEELinc.com
Advertising .....	advertising@PEELinc.com, 1-888-687-6444

**DISCLAIMER:** Articles and ads in this newsletter express the opinions of their authors and do not necessarily reflect the opinions of Peel, Inc. or its employees. Peel, Inc. is not responsible for the accuracy of any facts stated in articles submitted by others. The publisher also assumes no responsibility for the advertising content with this publication. All warranties and representations made in the advertising content are solely that of the advertiser and any such claims regarding its content should be taken up with the advertiser.

\* The publisher assumes no liability with regard to its advertisers for misprints or failure to place advertising in this publication except for the actual cost of such advertising.

\* Although every effort is taken to avoid mistakes and/or misprints, the publisher assumes no responsibility for any errors of information or typographical mistakes, except as limited to the cost of advertising as stated above or in the case of misinformation, a printed retraction/correction.

\* Under no circumstances shall the publisher be held liable for incidental or consequential damages, inconvenience, loss of business or services, or any other liabilities from failure to publish, or from failure to publish in a timely manner, except as limited to liabilities stated above.

### Cypress-Fairbanks ISD- (Continued from Cover page)

during their annual conference held in Austin at the State Awards Dinner on January 29th.

*The award winners were as follows:*

Outstanding Senior Volunteer: Mr. Robert Zemcik – State Crystal Award Winner; Outstanding Adult Volunteer: Ms Lisa Underwood – State Crystal Award Winner; Community Partnership: Cy-Fair Houston Chamber of Commerce – State Crystal Award Winner; Local Business Partnership: Mr. Ed Station of Station & Ayers Insurance – State Crystal Award Winner; Medium Business Partnership: Cy-Fair Federal Credit Union – State Crystal Award Winner; Small Business Partnership: Credit Union Acceptance – State Gold Award Winner.

The district congratulates these distinguished individuals and businesses for their awards and accomplishments and thanks them for their devoted service to the students who attend our schools. And to every volunteer in our district, we celebrate each of you for the service you provide our students and staff all throughout the year.



## 281-373-4640

**MAJA**



**Join us for  
The Dog  
Days of  
Summer.**

*Luxury Suites, Grooming  
Training, Doggie Daycare*

[www.tailsoftexaspetresort.com](http://www.tailsoftexaspetresort.com)

17720 Huffmeister Road  
Between Skinner and Cypress Rosehill

## Lone Star College-CyFair "Perspective"

**Summer Fun in Gallery and on Stage -** The Bosque Gallery presents "Someone Else - Portrait Exhibition" June 17 through July 3. Meet the artists at a 4 p.m. to 7 p.m. reception June 19. This exhibition is considered "open-call" so there were no restrictions on age, medium or experience level. For information, go to [CyFair.LoneStar.edu/bosquegallery](http://CyFair.LoneStar.edu/bosquegallery). Don't miss this year's children's shows "Thaddeus and 'Tila" June 18 through July 25 and "Go, Dog. Go!" Aug. 4 through Aug. 15. Then bring the family for Elton John and Tim Rice's "Aida" July 17 through July 27. For tickets and information call 281-290-5201 or go to [CyFair.LoneStar.edu/boxoffice](http://CyFair.LoneStar.edu/boxoffice).

**Free New Student Orientation and Family Orientations!** - Incoming new students and their family members will receive campus tours and learn about academic and student life. Choose among full-day and half day programs that also include My Records training, advising

presentation and class registration, or mini orientation programs that include student panel, student activities information and a question and answer session. Programs are available in June, July and August. Register at [CyFair.LoneStar.edu/orientation](http://CyFair.LoneStar.edu/orientation).

**Library Offers Something for Everyone this Summer** - The Harris County Public Library Lone Star College-CyFair Branch offers Summer Reading Program for children and adults. The library also offers free computer workshops, including new Undercover Librarian workshop. Topics range from basic computer functions to introductions to the Internet and various software programs. A variety of monthly book clubs are available including mystery, women of the world and sports page. There are plenty of youth programs with activities and book clubs for teens and storytime for younger children. Go online to [CyFair.LoneStar.edu/library](http://CyFair.LoneStar.edu/library) for information.

## Newsletter Article Submissions

Interested in submitting an article? You can do so by emailing [longwoodletter@peelinc.com](mailto:longwoodletter@peelinc.com) or by going to <http://www.peelinc.com/articleSubmit.php>. All news must be received by the 9th of the month prior to the issue. So if you are involved with a school group, scouts, sports etc - please submit your articles for Longwood Letter. Personal news for the Stork Report, Teenage Job Seekers, special celebrations and military service are also welcome.

### Classified Ads

**Personal classifieds** (one time sell items, such as a used bike...) run at no charge to Longwood residents, limit 30 words, please e-mail [longwoodletter@peelinc.com](mailto:longwoodletter@peelinc.com).

**Business classifieds** (offering a service or product line for profit) are \$50, limit 40 words, please contact Peel, Inc. Sales Office at 512-989-8905 or [advertising@PEELinc.com](mailto:advertising@PEELinc.com).



**No Payments until April 2009  
May 5- June 15**

**ON SALE !**

**SMARTSTRAND.**  
made with DuPont® Sorona® polymer

**LIFE Happens, Think SMART  
THINK SMARTSTRAND Carpet**

**New Styles  
Now Available!**

**(281)256-3333**

**25813 Highway 290, Cypress, TX 77429**

*(Located in the Taraet shopping center)*





# LONGWOOD LETTER

## Bottled Water vs. Tap

By Louise Bell

### A few facts about each, then you decide.

Water that comes from your faucet costs about \$0.002 per gallon. Bottled water is about \$9.00 per gallon.

Cost is only one factor. Many people choose bottled water over what comes from the faucet because they say they like the convenience, taste, and purity. Actually, one quarter to 40% of bottled water is municipal tap water re-packaged, possibly with additional treatment. The FDA regulates bottled water; however, standards are weaker than EPA standards for tap water. For instance, E. coli is allowed in bottled water, but not in tap water. The EPA requires water testing 100+ times per month, FDA requires testing once a month. In addition, the 60-70% of bottled water that does not cross state lines is exempt from any FDA standards!

The nonprofit National Resources Defense Council (NRDC) tested samples of 103 brands of bottled water and found that a fourth were just tap water---sometimes further treated, sometimes not. The group stated that there was no reason to assume that bottled water was superior to tap water or had fewer microbial or chemical contaminants. The plastic bottle itself may leach phthalate (regulated by EPA) into the water, for which there is no bottled water standard.

As Americans, we are entitled to drink safe, clean water. If you are concerned about drinking tap water, perhaps a purification system will

erase your fears. You can make sure that your water has additional treatment by reverse osmosis distillation, UV radiation or the use of absolute 1 micron filtration to eliminate smaller or resistant disease-causing organisms. Filter your own water and carry it in a stainless steel thermos.

Bottled water is sold in cheap, convenient PET (polyethylene terephthalate) containers, an easily recyclable form of plastic, but recycling rates for plastic bottles are less than 25%. Most head for a landfill! Plastic is light and floats and is blown about in the wind. All rivers lead to the sea; the Houston Ship Channel is a frightening repository of plastic of all types, probably washed down storm drains. Each year, more than 4 billion pounds of plastic bottles end up in landfills or as litter in the U.S. Think about this: THE TOTAL ENERGY NEEDED TO MAKE, TRANSPORT AND DISPOSE OF ONE BOTTLE OF WATER IS EQUIVALENT TO FILLING THE SAME BOTTLE ONE-QUARTER FULL OF OIL!

Plastic has been around for about 50 years. It is made from oil; it takes 1.5 million barrels to manufacture a year's worth of those handy bottles. It can photo-degrade, meaning sunlight will cause it to become brittle and crumble, but it does not decompose. No microbes have yet evolved to eat it---break it down into its building blocks. It

*(Continued on page 5)*

**FRESH PAINTING** 

**CUSTOM INTERIOR AND EXTERIOR PAINTING**

**DRYWALL REPAIR**

**FENCE & DECK REPAIR**

**WALLPAPER REMOVAL**

**PRESSURE WASHING**

**WINDOW CLEANING AND MORE...**



VISIT US AT  
**[www.freshpaintingplus.com](http://www.freshpaintingplus.com)**  
OR GIVE US A CALL AT  
**281-758-1391/ 281-210-6762**  
**FOR A FREE ESTIMATE**

**SATISFACTION GUARANTEED**  
Licensed & Insured



**Cypress  
Home  
Cleaning**

Mention this  
ad and get  
**10% OFF**

Your One Stop Cleaning Services!

**Daily, Weekly or One-Time Cleaning**  
**Call today for a FREE estimate**  
**Move-In, Move Out**

Office: 281-758-1391  
Cell: 832-892-1283  
or visit us on the web at:  
**[www.CypressHomeCleaning.com](http://www.CypressHomeCleaning.com)**

**QUALITY WORK AT AFFORDABLE PRICING!**  
Licensed and Insured



## Bottle Water vs. Tap - (Continued from page 4)

can break into smaller and smaller bits, but will remain a man-made polymer, and it can possibly hang around in the environment for 1000 years!

We have a steady, reliable, and cheap source of clean, freshwater for drinking, available at few other times in world history and few other places in the world. But many people are choosing to forsake ordinary tap water for the convenience and perceived benefits of bottled water, in favor of a product that is the same or lesser quality, higher price, uncertain safety, packaged to be discarded and not degrade for 1000 years. We are very wealthy, indeed, to be so heedless. The convenience and perceived benefits of bottled water seem dubious when we consider the added costs for transportation and packaging and, most important, the cost to the environment. What would a person who cares about the future of our environment drink? You decide.

### Sources:

FDA Consumer Magazine, July-August, 2002

FDA, Federal Register, 21, Part 165, 2005

EPA, Texas Commission on Environmental Quality, 2007

Think Outside the Bottle, Beverage Marketing Corp., Natural Resources Defense Council



infants children teens

## Joe Pierce, DDS Pediatric Dentist

281-758-2790 • 281-758-2791 (fax)  
13611 Skinner Road, Suite 135  
Cypress, TX 77429  
(Skinner at Spring Cypress)  
[joepiercedds@sbcglobal.net](mailto:joepiercedds@sbcglobal.net)

## Aloha from Outrigger Island!

Join the Jersey Village Baptist Church VBS fun as we grab our surfboards and learn to ride the waves of God's truth. All children ages 4 (as of September 1, 2007) - 5th Grade are invited to attend. VBS is June 16-20 from 9 am to 12 pm daily and is a **FREE** event. Register online at [www.jvbc.org](http://www.jvbc.org). Jersey Village Baptist Church; 16518 Jersey Drive; Houston, TX 77040; 713-466-6102. For more information, contact Elaine Pendergrass ([ependergrass@jvbc.org](mailto:ependergrass@jvbc.org)).



The Longwood Letter is a private publication published by Peel, Inc. It is not sanctioned by any homeowners association or organization, nor is it subject to the approval of any homeowners association or organization, nor is it intended, nor implied to replace any publication that may be published by or on behalf of any homeowners association or organization. At no time will any source be allowed to use the Longwood Letter contents, or loan said contents, to others in anyway, shape or form, nor in any media, website, print, film, e-mail, electrostatic copy, fax, or etc. for the purpose of solicitation, commercial use, or any use for profit, political campaigns, or other self amplification, under penalty of law without written or expressed permission from Peel, Inc. The information in the Longwood Letter is exclusively for the private use of Peel, Inc.

## YARD DOODY

Weekly dog waste removal services

**Finally a service that benefits you,  
your backyard and your little friends  
at the same time!**



Easy Sign-up  
No Contracts  
Senior Discounts  
Disabled Discounts  
Referral Rewards

**Become DOODY-FREE  
Today! Give us a call:**

**281-256-2512**

Going where your dog has gone before

**4th Visit Free!**  
[www.YardDoody.com](http://www.YardDoody.com)

# LONGWOOD LETTER

## Stem Cell Therapies

### Topic of Monthly Seminar Open to the Public

Baylor College of Medicine

Current prospects for stem cell therapies will be presented in a public forum on June 10 at the Health Museum of Houston.

The talk will feature genetic experts Dr. Jonathan Berg, assistant professor of molecular and human genetics, and Dr. Margaret Goodell, professor of pediatrics and molecular and human genetics, both of Baylor College of Medicine in Houston. Goodell also serves as director of the Stem Cells and Regenerative Medicine Center at BCM.

Sponsored by BCM and Texas Children's Hospital, the event is part of a monthly "Evening with Genetics" lecture series organized by BCM's Department of Molecular and Human Genetics. The series offers current information regarding care, education and research about genetic disorders.

Stem cells are widely considered to have great promise for the treatment of diseases. The seminar will discuss differences between adult and embryonic stem cells, the importance of stem cell research and future expectations for stem cell therapies.

The program is free and open to the public. It will be held at 7 p.m. at The Health Museum of Houston, 1515 Hermann Dr. For more information or to register, contact Susan Fernbach at 832-822-4182 or fernbach@bcm.edu.

## Cypress Assistance Ministries School Supplies Needed

11202 Huffmeister • 281-955-7684 • www.cypressassistance.org

Families of hundreds of school-aged children in the Cypress/Northwest Houston area are depending on CAM to assist them with necessary school supplies for their children. These start-up supplies can be impossible to fit into an already strained budget. Your donations of the following would be greatly appreciated:

- pocket folders with brads
- washable markers
- large & small packages manila paper
- large & small packages construction paper
- pencil boxes
- scissors and rulers
- new socks and underwear in all sizes

For the Food Pantry, donations of the following will help families with children home for the summer:

- peanut butter & jelly
- Spaghetti Os
- Canned Meats
- Diapers – all sizes
- Sweetened Drink Mixes
- Snack Foods
- Powdered milk

Donations can be made Monday through Wednesday from 10AM – 6PM and Thursday through Saturday from 10AM – 3PM.

For a description of the services and volunteer opportunities at Cypress Assistance Ministries please see our web site, www.cypressassistance.org

## The Foot Wellness Center

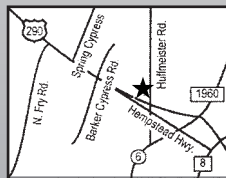


Named one of  
**HOUSTON'S TOP DOCTORS**  
by H Texas Magazine

- Bunions • Hammertoes • Heal Pain
- Ingrown Nails • Corns, Calluses
- Injuries • Sport Injuries • Children
- Diabetic Foot Care • Orthotics
- Fractures of the Foot & Ankle

**Have No Insurance?**  
We Will Work With You!

- **3D State-of-the art Walking Analysis**
- **Certified in Endoscopic Heel Surgery, Ossatron Non-Invasive Heel Spur Surgery, & Laser Surgery For Warts**
- **Alternative Medicine**



**North Cypress Medical Center**  
21216 N.W. Frwy., Ste. 240  
**281-955-5500**



**Dr. Judith E. Rubin,  
Podiatrist/Foot Specialist**

- \* Diplomate, American Board of Podiatric Surgery
- \* Board Certified in Foot & Ankle Surgery
- \* Fellow American College of Foot & Ankle Surgery
- \* Certified Wellness Educator

**www.DrRubinFootWellness.com**  
**Serving the Houston Area 24 Years**

## We open doors FOR 50,000 STUDENTS

**Register NOW for summer and fall ...**  
flexible class options include weekend, evening and distance learning.

**Summer classes start June 2 and July 10.**  
**Weekend classes start June 6 to June 8.**  
**Fall classes start Aug. 25.**

**Register and pay EARLY ...**  
for fall college credit courses by Aug. 4 and you're entered to win a free semester of tuition.



Barker Cypress Campus  
9191 Barker Cypress  
Cypress, TX 77433

Lone Star College-Fairbanks Center  
14955 Northwest Freeway  
Houston, TX 77040

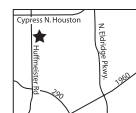


benefiting  
Cypress Assistance Ministries

**281-955-7683**

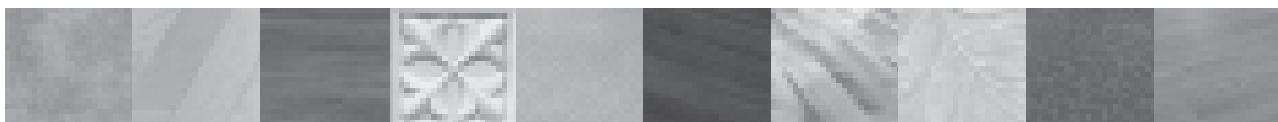
Monday-Wednesday 10-6  
Thursday-Saturday 10-3

- Clothing
- Furniture
- Toys
- New Jewelry
- Housewares



**11202 Huffmeister**

Donations Welcome  
Tax Receipts Given



# Flaherty's FlooringAmerica

Formerly Carpet Masters of Texas

New Name. Same Owner. Same Promise.

## FREE CARPET INSTALLATION\*

13422 Grant Rd.  
Cypress, TX 77429

**281.370.8022**

10700 Kuykendahl Rd.  
The Woodlands, TX 77381

**281.363.1962**

**1 Year No Interest,  
No Payments Financing Available**

\* Free installation valid on carpet only.  
Minimum purchase applies.  
Expires 6/30/08.

[www.flahertysflooring.com](http://www.flahertysflooring.com)

wood ceramic laminate vinyl area rugs carpet



# LONGWOOD LETTER

## Your Guide to Choosing Life Insurance

*Submitted by Rich Keith*

### Should You Get Coverage Through Your Employer?

Lots of companies offer their employees comprehensive benefits packages, and some include the option to purchase group life insurance. But if you quit, retire or otherwise leave your job, you may also have to leave your group life insurance behind. Among the many factors to consider when choosing life insurance, make sure that policy portability is near the top of your list.

#### Know the Difference:

**INDIVIDUAL LIFE INSURANCE POLICY** is purchased and controlled independently by a person.

**GROUP LIFE INSURANCE POLICY** is purchased through an employer or organization, often controlled by that employer or organization.

In 2002, group insurance represented 42% of all life insurance in force.(1) But is that type of coverage right for your family? Two million jobs were lost in the last two years.(2) In this uncertain economic climate marked by outsourcing and layoffs, many families could lose their group life insurance coverage.

Group Life Insurance	Planner-led Term Life Insurance
No access to a dedicated representative	A licensed agent works with you to choose the coverage that meets your needs.
No consideration of your financial needs	Financial planners can offer a comprehensive Financial Needs Analysis to help you get your financial house in order, from debt to retirement and more.
The policy may offer guaranteed coverage only as long as your employment continues.	Term life insurance is portable. You take it with you wherever you go, regardless of your employment status.
Annual Renewable Term, ART, is the most common form of group products, but it doesn't usually come with guaranteed premiums. This means the insurer has the right to increase your premiums at will.	Quality plans offers level premiums that are guaranteed for the term of the policy or to age 90. This helps you control your costs.
Group life insurance coverage is usually limited to 2x your annual salary, which is well below the recommended amount of coverage for the average family.	Quality plans do not limit the coverage you can apply for, making it possible for most families to secure coverage which is 5-10 times their annual income, as what most experts recommend.
If you decide to leave the workforce, you may not qualify for a new life insurance policy based on your health.	Quality plans offer guaranteed coverage regardless of your health once the policy is issued.

*(Continued on page 9)*



**SparkPowerBank**  
www.sparkpowerbank.com

By Spark Energy

**SIGN-UP ONLINE  
TODAY!**

## We Challenge What You Pay For Electricity!

If SparkPowerBank isn't your current electricity provider...chances are you're paying too much!



I'm Texas Energy Analyst Alan Lammey. Maybe you've heard me on the radio talking about the market forces that drive energy prices. I'm here to tell you that you're not stuck paying those high prices to big electric companies anymore! **Stop it.**

Why pay more than you have to? Those days are over!

Why would you want to go with an electric provider that charges you more, when you can go to [www.sparkpowerbank.com](http://www.sparkpowerbank.com) and pay far less for the same electricity?

**Make sense?**

Please choose "Newsletter Ad" as your referral on the SparkPowerBank.com website.

# LONGWOOD LETTER

**Life Insurance-** (Continued from page 8)

## **Choose the Right Coverage for Your Family**

With all the choices available, deciding how to protect your loved ones can be difficult. Whatever type of life insurance program you choose, make sure you get the right protection from a company you can count on.

## **Philosophy: Get Coverage for When You Need It Most**

Protection is most important while your family is depending on you to provide for them. At this stage in life, you're likely to have the most financial obligations — mortgage, young children, car payments and so on. As you get older, your financial commitments usually are fewer. The kids grow up. The mortgage gets paid off. That means you need less protection. It's called the Theory of Decreasing Responsibility.

## **Look for Solid Financial Ratings**

The financial strength of your life insurance provider is important because it indicates the insurance company's ability to pay out your death benefit. You're counting on that money to be available to your loved ones, should they need it. Look for high ratings from companies such as A.M. Best, S&P, and Moody's.

Sources:

Primerica Financial Services

(1) ACLI 2003 Fact Book

(2) Parade Magazine, March 2, 2003

(3) www.quatloos.com

**Carol L Brown**

*Certified Public Accountant*



*Professional Accounting and Tax Services  
For Small Businesses and Individuals*

713-899-1760

15201 Mason Road, Suite 1000, PMB 107

Cypress TX, 77433

Carolbrowncpa@sbcglobal.net

**Medicare, Medicaid, and Insurances Accepted.**

**Burhani Physical Therapy and Rehabilitation**  
**Physical & Occupational Therapy**

**281-758-2727**

Orthopedics - Vertigo - Pain Management - Sports Injuries

Occupational Therapy - Strokes - Pediatric Rehab - Neuro

Development Delays - Handwriting Problems

**M-F: 7am-7pm**

**Sat: 8am-2pm**

**13611 Skinner Rd. Suite 160**

**Cypress, TX 77429**

(Corner of Skinner & Spring Cypress)

## **Bashans Painting & Home Repair**

**Commercial/Residential  
Free Estimates**

**281-347-6702**



**281-731-3383 cell**



- Interior & Exterior
- 20 Years Experience
- Hardiplank Installation
- Wood Replacement
- Pressure Washing
- Sheetrock Repair & Texturing
- Cabinet Painting
- Door Refinishing & Replacement
- Wallpaper Removal
- Custom Staining
- Fence Replacement or Repair

**References Available • Fully Insured  
NO PAYMENT UNTIL COMPLETION**

[bashanspainting@earthlink.net](mailto:bashanspainting@earthlink.net)

## **Cypress Computers**

- **FREE** House Calls & **FREE** Estimates
- On-site Service
- **FREE** Pick & Drop
- Virus & Spyware Removal
- Data Recovery
- System Crash Recovery
- DSL Setup & Networking
- Software & Hardware Installation
- Desktops & Laptops Sales & Upgrades
- Custom Built & Refurbished Systems Available
- Wireless Internet Setup



**We Compete...**



**Beat All The  
Prices in Town**

**Call for Service:**

**832-643-4859**

[www.cypresscomputers.com](http://www.cypresscomputers.com)

13050 Louetta @ Grant, Ste 208 - 281-257-0005

12303 N. Eldridge @ Cypress N. Houston, Ste E - 281-469-6355

# LONGWOOD LETTER

## Summer Pet Health

By Jim Amyx, DVM

In this "Summer Pet Health" article, I am going to address fleas, ticks, mosquitoes, bees, and wasps - dreaded insects that infest and cause great stress to our pets. Not only a nuisance, these insects can cause serious, even life-threatening pet diseases. Being proactive is the best way to protect your pet.

Fleas are a big nuisance to pets. They cause non-stop itching, burrow deep into your pet's skin, and leave nasty flea feces (a.k.a. "flea dirt") all over your pet. Fleas are everywhere and yes, "indoor only" pets can get fleas too! Fleas lay hundreds of eggs per day that live on your pet, fall into your carpet and furniture, and infest your environment. They are very efficient reproducers with a life cycle as short as 16 days from egg to mature adult. By the time you notice a flea problem on your indoor pet, your lawn, your house, and maybe even your car are all infested as well. Many dogs and cats are intensely allergic to fleas and, besides just an itch, can develop severe skin problems long after a flea is dead and gone.

Additionally, by ingesting fleas, tapeworms can be transmitted to your pet. Tapeworms compete with your pet's body for nourishment causing chronic malnourishment, weight loss, and other gastrointestinal symptoms. Very small pets, puppies, kittens, and cats can develop severe - even deadly anemia - due to fleas' blood meals on your pet when present in large quantities.

Ticks are another parasite that pesters and endangers your pet. Instead of jumping or flying, ticks crawl onto your pet. They are found primarily in wooded areas, wood piles, dense shrubs, and thick grass. Lyme Disease, Ehrlichia, Rocky Mountain Spotted Fever, and Tularemia are all diseases spread by ticks and, for this reason, can be extremely dangerous to pets and people. In large numbers, the saliva of ticks can cause neurological symptoms, even paralysis in pets.

Once found, ticks should be removed as soon as possible. If you cannot take your pet to the veterinarian to have ticks removed, then remove them yourself very carefully. Always wear gloves when removing ticks. Never try to rupture (or crush) a tick with a distended abdomen to prevent spread of disease to yourself and your pet. To remove a tick, put a small amount of alcohol on the pet, use a pair of tweezers to grasp the tick as close to the pet's skin as possible and pull out the tick in a single steady motion. The tick should come out intact. Kill the tick by drowning it in alcohol before disposing of it.

Do not burn the tick with a match, pour oil, nail polish remover, or

any other chemicals on your pet to kill the tick. If you do, chances are you'll hurt your pet in the process.

Fleas and ticks are by far the most common external parasites that plague dogs and cats. They can rapidly infest your pet - once your pet has been infested, so has your house, lawn and car. Prevention is the key.

Many flea and tick prevention products are available. Generally, flea shampoos and flea/tick collars are NOT effective in controlling and preventing infestation. Topical and oral flea and tick preventives are very effective and reliable. I highly recommend seeing your veterinarian to determine which product is best for your pet. There is significant difference in the efficacy of products available. So, before you spend money buying products off the shelf at a retail store, check with your veterinarian. It is far more difficult and expensive to eliminate fleas and ticks than to prevent them. So invest your money wisely.

Mosquitoes pose perhaps the greatest life threatening risk to pets - heartworms. Yes, heartworms do infect cats as well as dogs - indoors and out. Regardless of how much time your pet spends indoors, it can (and here, will almost certainly) be infected with heartworms at some point in time.

Heartworms cause severe heart and lung disease in both dogs and cats and can be life-threatening without treatment. Currently there is no treatment available for heartworms in cats, so prevention is absolutely essential for all cats. There are many preventive options available, so again, check with your veterinarian for the best prevention for your pet.

In addition to heartworms, mosquitoes cause allergic skin disease



(Continued on pg. 11)

## Luxury Pet Boarding & Mobile Grooming Salon

-  Located on 3 wooded acres
-  Spacious dog park & splash zone
-  Newly Renovated Office, Day Care & Cat Parlor
-  Can't get away? Let our Mobile Salon come to you

Family Owned & Operated since 1988

**Foxmoor Retreat and Salon**

(281)351-0825 or (866)601-5512

**Rachael's**



**Hallmark**  
GOLD CROWN®

**\$2<sup>00</sup> OFF**  
any \$10 purchase

not to be combined  
with any other offers  
or used on sale  
merchandise  
expires 6/30/08



**12312 Barker Cypress @ 290 • 281-256-9800**



# LONGWOOD LETTER

## Summer Pet - (Continued from page 10)

in both dogs and cats and can transmit severe diseases such as West Nile Virus to your family members. Remove all sources of standing water in your yard to help control mosquitoes - this includes tires, flower pots, some bird baths, and poor drainage areas.

Mosquitoes bite - bees and wasps sting. They hurt pets just as they do people. Pets, like people, can be allergic to bee and wasp stings. Intrigued by these insects, pets try to catch them. Allergic reactions typically occur within 15-30 minutes after the sting. Pets usually develop severe swelling at the site, swelling of the lips and skin around the eyes, and may develop hives or bumps all over their body. In most cases this is a mild reaction, but some cases can be severe enough to cause difficulty in breathing. If your pet develops these symptoms, take your pet to your veterinarian for an exam. Until then, you can safely give your pet 1 mg of Benadryl (generic formula is diphenhydramine) per pound of body weight by mouth. Diphenhydramine typically comes in capsules or tablets (25 or 50 mg) and a children's liquid (12.5mg per teaspoon - 5ml). Call your veterinarian for assistance if you have any questions regarding how much Benadryl to give to your pet.

It is impossible to eliminate these insects, so we must control their population. Protect your pet from fleas, ticks, mosquitoes, bees, and wasps. Don't let them infect or infest your pet, your yard, and your home!

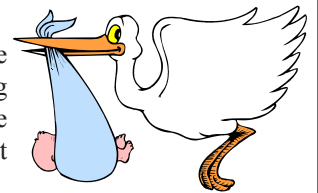
NOT AVAILABLE ONLINE

### Attention Teenagers

The **Teenage Job Seekers** listing service is offered free of charge to all Longwood teenagers seeking work. Submit your name and information to [longwoodletter@peelinc.com](mailto:longwoodletter@peelinc.com) by the 9<sup>th</sup> of the month!

### Stork Report

If you have a new addition to the family please let us know by emailing [longwoodletter@peelinc.com](mailto:longwoodletter@peelinc.com) and we will include an announcement to let everyone know!



## OPENING IN JUNE Emergency Room Open 24 Hours

### Ready or not... we are.

Texas Emergency Care Specialists is open **24 hours a day**. We're committed to delivering comprehensive medical services in a comfortable environment with little to no wait time - day or night.

You'll experience:

- A full-service facility equipped with a complete laboratory, radiology, CT scanning and cardiac monitoring.
- Prompt, friendly and caring service.
- Quality face time with a physician who is both emergency residency-trained and Board Certified in Emergency Medicine.

**After all, emergencies just can't wait.**

## 281-304-9113

All private insurance accepted.



TEXAS  
EMERGENCY CARE  
SPECIALISTS

RAPID RESPONSE. EXPERT CARE.



Spring Cypress at Skinner Road  
17255 Spring Cypress Road, Suite A

[www.txercare.com](http://www.txercare.com)



Accredited by the Joint Commission of  
Accreditation of Healthcare Organizations  
for our commitment to excellence.



# LONGWOOD LETTER

## Messina Hof Winery Announces the 31st Anniversary Annual Harvest Celebration

Messina Hof, the fastest growing award-winning winery and resort in Texas, is celebrating their Harvest from July 18 to August 17, 2008, announced Paul and Merrill Bonarrigo, co-founders of Messina Hof Winery & Resort in Bryan, Texas.

Harvest is a time when guests can experience the century-old tradition of making wine by picking and stomping of the grapes. Wine lovers, including special guests and local celebrities, will roll up their sleeves and pants and partake in the first phase of wine making with the Messina Hof Family. After guests hand-pick the grapes straight from the vine, the fun of squashing begins. Not only will they get their feet wet, they will be rewarded for their hard work with a Harvest Cuisine prepared by Award winning culinary team of The Vintage House restaurant.

"Harvest is our favorite time of year here at Messina Hof Winery," said Paul Bonarrigo. "It gives us a chance to share our love of making award-winning wine with people who not only love wine, but love having a good time!"

The second annual Moonlit Harvest will be an enchanted evening not to be forgotten. The romantic evening will kick off the first harvesting of the grapes as guests pick grapes from the vineyards, then stomp them under a beautiful sunset on Friday, July 18, 2008. Guests also receive a Messina Hof Harvest souvenir t-shirt to imprint with their purple feet after stomping. After the grapes have been crushed, they will enjoy a multiple-course special dinner at The Vintage House Restaurant.

Harvest is an exciting five-week event featuring a wide variety of food and wine events including



the Moonlit Harvest, Harvest, Harvest Murder Mystery Dinners, and the Harvest Vintner's Dinner each weekend.

*Harvest events in chronological order:*

### Moonlit Harvest

**Friday, July 18, 2008**

The second annual "Moonlit Harvest" includes picking and stomping the grapes, a souvenir t-shirt, and a Vineyard Cuisine dinner at The Vintage House.

### Harvest

**Saturday, July 19, 2008 – Sunday, August 17, 2008**

**(Saturday and Sunday only)**

### Murder Mystery Dinners

**Saturday, July 21, 2008 – Saturday, August 18, 2008**

**(All Murder Mystery Dinners begin at 6:30 PM)**

Mystery Dinner theme's are as follows:

July 19 - "Pirate Murder Mystery"

July 26 - "Celebrity Celebrations"

August 2 - "Storm Survivors"

August 9 - "Case of the Missing Matchmaker"

August 15 - "Murder on the Mound"

### Harvest Vintner's Dinners

**Friday, July 25, 2008 – Saturday, August 16, 2008**

**(All Vintner's Dinners begin at 6:30 PM)**

Harvest Vintner's Dinner's are as follows:

July 25

August 1

August 8

August 16 – Grand Finale

Messina Hof Winery is located at 4545 Old Reliance Rd. in Bryan, TX.

**Peel, Inc.**  
**Printing & Publishing**

Publishing community newsletters since 1991

**Kim Moore**  
Sales Representative  
281-373-3807  
kim@PEELinc.com

**1-888-687-6444    www.PEELinc.com**



**Support This  
Neighborhood  
Newsletter.**

*Advertise your business  
to your neighbors.*

## WHAT DO YOU WANT TO IMPROVE?

### ENRICHMENT INSTITUTE

- ◆ BASEBALL
- ◆ TENNIS
- ◆ BASKETBALL
- ◆ GOLF
- ◆ FOOTBALL
- ◆ SOCCER
- ◆ BALLET / TAP
- ◆ DRILL TEAM
- ◆ CHEERLEADING
- ◆ BAND
- ◆ FOCUS, ATTENTION & ENDURANCE
- ◆ IMPROVE TEST TAKING SKILLS
- ◆ BALANCE & COORDINATION
- ◆ ENDURANCE & STRENGTH

### WELLNESS CENTER

- × ALLERGIES
- × CANDIDIASIS
- × AUTISM
- × LYME DISEASE
- × ASPERGERS
- × JOINT PAIN
- × SLEEPING DISORDERS
- × IMMUNE DEFICIENCY
- × ASTHMA
- × HEADACHES
- × DEPRESSION
- × WEIGHT LOSS
- × HORMONES
- × SPORTS INJURY
- × MULTIPLE CHEMICAL
- × CHRONIC FATIGUE

## HOW DO YOU IMPROVE?

### INTERACTIVE METRONOME

*IM is the only research-based training program that combines the concept of a musical metronome with a technological system that accurately measures and improves a person's rhythm and timing. As these fundamental abilities are improved, the IM program is "training the brain" to plan, sequence and process information more effectively.*

- ATTENTION & CONCENTRATION MOTOR PLANNING & SEQUENCING LANGUAGE PROCESSING
- BEHAVIOR (AGGRESSION & IMPULSIVITY)
- BALANCE AND GAIT
- ENDURANCE AND STRENGTH
- COORDINATION AND MOTOR SKILLS

[eelinc.com](http://eelinc.com)

THESE ARE JUST A FEW OF OUR RESOURCES AT HILTONS HEARTLAND

### HYPERBARIC OXYGEN CHAMBER

*Repairs Damaged Tissue & Dormant Brain Cells*

- ATHLETES DESIRING PEAK PERFORMANCE AND RAPID RECOVERY FROM WORKOUT OR INJURY
- ANYONE SEEKING GENERAL HEALTH IMPROVEMENT AND RELIEF FROM NON-LIFE THREATENING CONDITIONS, SUCH AS HEADACHES, FATIGUE, ARTHRITIS, ASTHMA, ALLERGIES AND MORE.
- PERSONS REQUIRING RAPID RECOVERY FROM INJURY, TRAUMA, OR THOSE PREPARING FOR OR RECOVERING FROM SURGERY.
- SUFFERERS OF CHRONIC AND/OR SERIOUS MEDICAL CONDITIONS OR ILLNESSES SUCH AS MULTIPLE SCLEROSIS, LUPUS, LYME DISEASE, AND MORE

### MASSAGES

*NOT JUST YOUR LUXURY MASSAGE WE SPECIALIZE IN... DEEP TISSUE MASSAGES*

- FOR ALL AGES
- DETOXIFICATION
- ATHLETE STRETCHING
- LYMPH DRAINAGE

### INFRARED SAUNA

*MAXIMUM DETOX THERAPY*

OUR EXPOSURE TO TOXINS IS HIGHER NOW THAN AT ANY POINT IN HUMAN HISTORY. SO MANY ASPECTS OF OUR LIVES CONTRIBUTE TO OUR TOXIC BURDEN WITHOUT OUR AWARENESS. WHILE MANY OF US HAVE SOME IDEA THAT BEING AROUND PESTICIDES OR AUTOMOBILE EXHAUST ISN'T GOOD FOR US, MOST OF US WOULD BE SURPRISED TO KNOW THAT THE FIRE RETARDANT PRESENT IN VIRTUALLY EVERYTHING OUR HOMES ALSO EXPOSES US TO TOXINS. EVEN OUR CARPETING OUTGASES OVER 12 CHEMICALS KNOWN TO CAUSE CANCER. TOXINS DAMAGE CELLS, DISRUPT OUR ENDOCRINE SYSTEMS, AND IMPAIR THE BODY'S ABILITY TO ABSORB NUTRIENTS AND HEAL ITSELF.



### BIOSET

- ALLERGY ELIMINATION THERAPY
- DIGESTIVE ASSESSMENT
- ENZYME THERAPY
- DETOXIFICATION THERAPY
- ENERGETIC SENSITIVITY TESTING





# LONGWOOD LETTER

## June Landscaping

*Submitted by Ron Kerwin*

Make Father HAPPY; give him a lawn service covering the HOT summer months as a gift he will REALLY appreciate!! We'd be glad to help.

It is getting hotter out; plan your lawn/garden work for early morning or evening to avoid the heat of the day. Make sure you drink plenty of non-alcoholic fluids, preferably water, to keep from becoming dehydrated.

Plan your mowing schedule around the growth of your lawn. You should not mow more than 1/3 of the blade length off at a time. IF you water or fertilize too much, you will generate excessive growth. This will require more frequent mowing to avoid cutting off more than 1/3. If you postpone mowing, you will be damaging your lawn, generating excess clippings which will require more of your time to mow over them multiple times, and you will do your small mower engine harm by trying to mow too much grass with its smaller horsepower. With proper fertilization and watering, weekly mowing should be adequate; there will be exceptions however.

You can fertilize again this month with a 3-1-2-ratio fertilizer or 4-1-2; try to get it with a minimum of 50 % slow release nitrogen to stretch out its benefits. Water the granular fertilizer in soon after application. You can water your patio plants and hanging baskets with a diluted 20-20-20 water-soluble fertilizer. Try to use filtered or distilled water for these plants and baskets to reduce the chlorine getting to the plants.

Canopy your trees to allow more sunlight to get to the lawn grasses underneath. Low tree canopies will not allow grass to survive. You want the lower branches removed anyway for safety reasons while mowing. You don't want to get poked in the eye.

On Red-tip Photinia and Indian Hawthorne's watch for maroon colored spots on the leaves. This indicates a fungal leaf spot and could be fatal to the shrubs if left unattended.

Apply a fungicide, Banner or Daconil as soon as you can. Powdery mildew on roses, crape myrtles, eunonymus and zinnias in late spring can be treated with a funginex spray weekly.

Trim your spring flowering shrubs now and then leave them alone. Your Indian Hawthornes and other spring flowering shrubs are done blooming. Now is the time to trim them back. After you do this, do not trim them again until after they bloom next spring. Trimming them later in the year may result in your removing the flower bud heads for next year. June bugs DO NOT mean to treat for their larva, grub worms. Treatment is only effective in late July/early August IF you have grubs. Spider mites can be treated with miticides, insecticidal soaps or just a blast of water from your hose.



**Tutoring Club**  
A Class Above. Guaranteed.™

**Tutoring for students of all  
academic levels, K-12**

**0% Interest  
For  
12 Months**

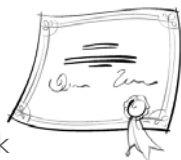
With Approved Credit



Special Individualized programs for

Math  
Reading  
Writing  
Study Skills

All School Coursework



**Summer Camp June - August!!**

**32 Hour Camp June—August \$1300\***

4 - one hour sessions weekly or 2 - two hour sessions weekly

**16 Hour Camp June -August \$750\***

2 - one hour sessions weekly

**8 Hour Mini-Camp July - August \$375\***

2 - one hour sessions weekly

\*Price includes assessment, one time registration, & materials

**281-373-9200**

**www.tutoringclub.com**

**24140 Highway 290 @ Barker Cypress  
in front of Randalls**

## LEGAL SERVICES

**Christine K. Lincoln**

**Attorney at Law**



- Divorce
- Adoption
- Premarital and Postmarital Agreements
- Modification of Orders
- Wills
- Health Care Directives
- Collaborative Law

**The Lincoln Law Firm PLLC**

**12777 Jones Road, Suite 475**

**Houston, TX 77070**

**(281) 970-9005**

**www.thelincolnlawfirm.com**

**Chris@thelincolnlawfirm.com**

## Sudoku

The challenge is to fill every row across, every column down, and every 3x3 box with the digits 1 through 9. Each 1 through 9 digit must appear only once in each row across, each column down, and each 3x3 box.

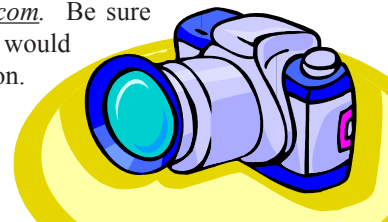
							1	
4	6							5
		5	3		8		7	
							9	1
					6		2	
1	7			2	3			
	3							9
5						4		7
2				4				

\*See solution at [PEELinc.com](http://PEELinc.com) © 2006. Feature Exchange

## Send Us Your Event Pictures!!

Do you have a picture of an event that you would like to run in the Longwood Letter? Send it to us and we will publish it in the next issue. Email the picture to [longwoodletter@peelinc.com](mailto:longwoodletter@peelinc.com). Be sure to include the text that you would like to have as the caption.

Pictures will appear in color online at [www.PEELinc.com](http://www.PEELinc.com).



## Advertising Information

Please support the businesses that advertise in the Longwood Letter. If you would like to support the newsletter by advertising, please contact our sales office at 512-989-8905 or [advertising@PEELinc.com](mailto:advertising@PEELinc.com). The advertising deadline is the 10th of each month for the following issue.

Advertise YOUR business  
to YOUR neighbors for  
less than 6¢ per home.

*Effective Advertising, Done Right.*

*Call today to Reserve your space.*

**Peel, Inc.**  
COMMUNITY NEWSLETTERS

**1-888-687-6444**

[www.PEELinc.com](http://www.PEELinc.com)

LW



# Longwood

*a Golf Course Community*

Dan Boutwell 281-468-2853  
Cindy Boutwell 281-797-3590  
danboutwell@dan-cindy.com

*Always in the Neighborhood*

[www.LONGWOOD-NEIGHBORS.com](http://www.LONGWOOD-NEIGHBORS.com)



We **Advertise** Longwood to Buyers  
which is one Reason why

We've **Sold** more Longwood homes  
than **ANY** other Agent this **YEAR !!!**  
( and since 2003 )

**We are the #1 Longwood Specialists**

## Longwood Homes We have **SOLD** this Year

13927 Conway	14719 Townsend	11602 Breakan Ct
12215 Preece Ct	13819 Kellerton	14303 Empire Hts
13907 Conway	13411 Crosslyn	14810 Cantwell bend

### **Peel, Inc.**

203 W. Main Street, Suite D  
Pflugerville, Texas 78660

PRSRT STD  
U.S. POSTAGE  
PAID  
PEEL, INC.

☎ **Voice 512-989-8905**

💻 [www.PEELinc.com](http://www.PEELinc.com)

LW