



The HOME FRONT

December 2008

Official Publication of Legends Ranch Property Owners Association

Volume 2, Issue 12

Legends Ranch Fall Festival 2008

We had over 300 residents join us for our annual Fall Festival!

Ghouls and boys of all ages enjoyed games, prizes, huge inflatable slide, hot dogs and more!



LEGENDS RANCH

IMPORTANT PHONE NUMBERS

Property Tax

| | |
|-----------------------------|--------------|
| Montgomery County Tax | 936-539-7897 |
| Conroe ISD | 936-709-7751 |
| Montgomery MUD #89 | 713-932-9011 |

Your Community Homeowners Association

| | |
|----------------------------------|--------------|
| PCMI Management | 281-504-1360 |
| Legends Ranch Info Center | 281-681-9750 |
| Legends Ranch SplashPad | 281-419-2130 |
| Gate Attendant Office | 281-296-0433 |
| Light Pole Outages | 281-681-9750 |
| Houston National Golf Club | 281-304-1400 |

Police & Fire

| | |
|---|--------------|
| Emergency | 911 |
| Montgomery Sheriff | 936-760-5800 |
| Pct. 3 Constable Office | 281-363-1161 |
| S. Montgomery Co. Fire Dept. Non-Emergency .. | 281-363-3473 |
| Montgomery County EMS Non-Emergency .. | 936-441-6243 |
| Poison Control | 800-222-1222 |
| Texas DPS | 713-681-1761 |

Utilities

| | |
|-------------------------------------|--------------|
| Electricity (TXU) | 800-368-1398 |
| Electricity (TXU New Service) | 281-441-3928 |
| Electricity (Centerpoint) | 713-207-2222 |
| Gas (Centerpoint) | 713-659-2111 |
| Water & Sewer | 281-353-9756 |
| Canyon Gate Connect | 281-296-9584 |
| Waste Management | 713-686-6666 |
| Street Light Outages | 713-207-2222 |

Public Services

| | |
|--|--------------|
| Local US Post Office | 281-419-7948 |
| Toll Road EZ Tag | 281-875-3279 |
| Voters Registration | 936-539-7843 |
| Vehicle Registration | 281-292-3325 |
| Drivers License Information | 936-442-2810 |
| Montgomery County Animal Control | 281-689-3133 |
| Montgomery Chamber | 281-367-5777 |

Area Hospitals

| | |
|-----------------------------|--------------|
| Memorial Hermann | 281-364-2300 |
| St. Luke's | 832-266-2000 |
| Conroe Medical Center | 281-364-7900 |

Conroe ISD 936-709-7751

| | |
|--------------------------|--------------|
| Ford Elementary | 281-367-4677 |
| Hauser Elementary | 281-863-4001 |
| Vogel Intermediate | 281-681-9829 |
| York Junior High | 281-367-6753 |
| Oak Ridge High | 281-292-9800 |

Private/Parochial

| | |
|------------------------------------|--------------|
| First Baptist Church | 936-756-6622 |
| Sacred Heart Catholic Church | 936-756-3848 |
| St. Edward Catholic | 281-353-4570 |
| St. James Episcopal Day | 936-756-4984 |

CONTACT YOUR BOARD & MANAGEMENT CO.

Phone: 281-504-1360 Fax: 281-531-4611
canyongate@stes.com

Have you logged in yet?

www.canyongate.com/residents/lr

Features of the Legends Ranch Community intranet include:

- Resident Directory
- Amenity Web Cams
- Current Events and Activities
- Documents and Forms
- Event Photos and MORE!



Newsletter Information

Editor

Anna Schmidt anna@events-ec.com

Publisher

Peel, Inc. www.PEELinc.com, 888-687-6444

Advertising advertising@PEELinc.com, 888-687-6444

The Association in no way verifies, endorses, or approves any products, information or opinions mentioned at Association sponsored functions or contained in this community newsletter.

Want an Honest and Hard Working
Realtor Working for YOU?

“Actions Speak Louder Than Words.”

Put Your Trust IN...



MARTY COWHAM

ACTIONS SPEAK LOUDER
THAN WORDS

VM: 281-863-1935

Fax: 281-364-9971

Email: MartyCowham@aol.com

**FREE Home Warranty with
December Listings - a \$400 Value!**

KELLER WILLIAMS

R E A L T Y

1401 Woodlands Parkway
The Woodlands, Texas 77380

Each Office is Independently Owned & Operated



LEGENDS RANCH

Announcing New Traffic And Safety Chair

Dear Fellow Residents,

My name is Brittany Kolkhorst, and I have recently volunteered to be the Traffic & Safety Committee Chair for our neighborhood. As part of my service to the neighborhood, I will post the official Montgomery County Sheriff's Office crime report for Legends Ranch to the community intranet each month. I am providing this report in an effort to raise community awareness of criminal activities - so we can all be mindful and protect our homes and neighborhood against such acts. To access the report, please visit www.canyongate.com/residents/lr and login. In addition to posting the criminal activity report, I will periodically submit a safety article to the newsletter containing helpful reminders and safety tips. I have also set up an email account, lrsafety@yahoo.com, where I welcome residents to email me their safety concerns regarding our neighborhood. Overall, my role as Traffic and Safety Chair is to facilitate the flow of safety information. I intend to keep residents informed of events that may directly impact the safety of our homes and families, as well as to pass all resident safety concerns on to our property management company for consideration. Please let me know if I can be of assistance. I look forward to serving our neighborhood.



Sincerely,
Brittany Kolkhorst

3rd Annual Holiday Yard Decorating Contest

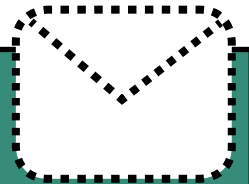
December 7th - 12th, 2008

Start planning your holiday decorations. Our newest tradition in Legends Ranch continues with our Annual Holiday Light Contest! Each section in Legends Ranch will have one winner, awarded a \$35 gift certificate. Most importantly, they'll get to display their winning yard sign during the holiday season!

Make sure your lights are on from Sunday, December 7th to Friday the 12th, as our volunteer judges will be driving the community!

Interested in participating as a judge? Contact Anna, Director of Community Events at anna@events-ec.com.

Go Green Go Paperless



Sign up to receive *The Home Front* in your inbox.
Visit PEELinc.com for details.

home away from home

The #1 Pet Lodging Alternative!

Travel guilt-free while your pet relaxes in a private home!

- ♥ Roundtrip transportation provided - even weekends
- ♥ One owner's pet(s) per home
- ♥ Pre-screened for compatibility



Pets Are Inn Est. 1982

281-651-PETS (7387) | petsareinn.com



NOW OPEN

Treating your pet like one of the family.

- Luxury Boarding Kennels & Cat Condos
- Vaccinations & Wellness care
- X-ray & Ultrasound capabilities
- General, Orthopedic & Oral Surgery
- Dental Cleanings & Dental X-Ray
- Hospitalization & Internal Medicine


COLE VETERINARY HOSPITAL
at Legends Ranch

281-465-0880

2757 Rayford Rd.

Wil Cole, DVM

www.ColeVet.com



LEGENDS RANCH

Holiday Safety Tips

Brittany Kolkhorst, LR Traffic & Safety Committee Chair

The month of December is a celebratory and busy time for many families. However, in the midst of the hustle and bustle, families may be unknowingly putting their safety at risk. The following are some safety tips from the Houston Police Department and from the American Academy of Pediatrics to help keep our homes and families safe this holiday season.

Holiday Decoration Safety

(American Academy of Pediatrics, 2008)

- When purchasing an artificial tree, look for the label "Fire Resistant."
- When setting up your tree at home, make sure you place it away from fireplaces and other heat sources. Also, place your tree out of the way of traffic and do not block doorways.
- Cut a few inches off of the bottom of your fresh tree to help with water absorption and keep the tree stand filled with water.
- Check all lights to make sure bulbs work and that there are no frayed wires, broken sockets or loose connections.
- Before using lights outdoors, check labels to be sure they have been certified for outdoor use. To hold lights in place, string them through hooks or insulated staples, not nails or tacks. Never pull or tug lights to remove them.

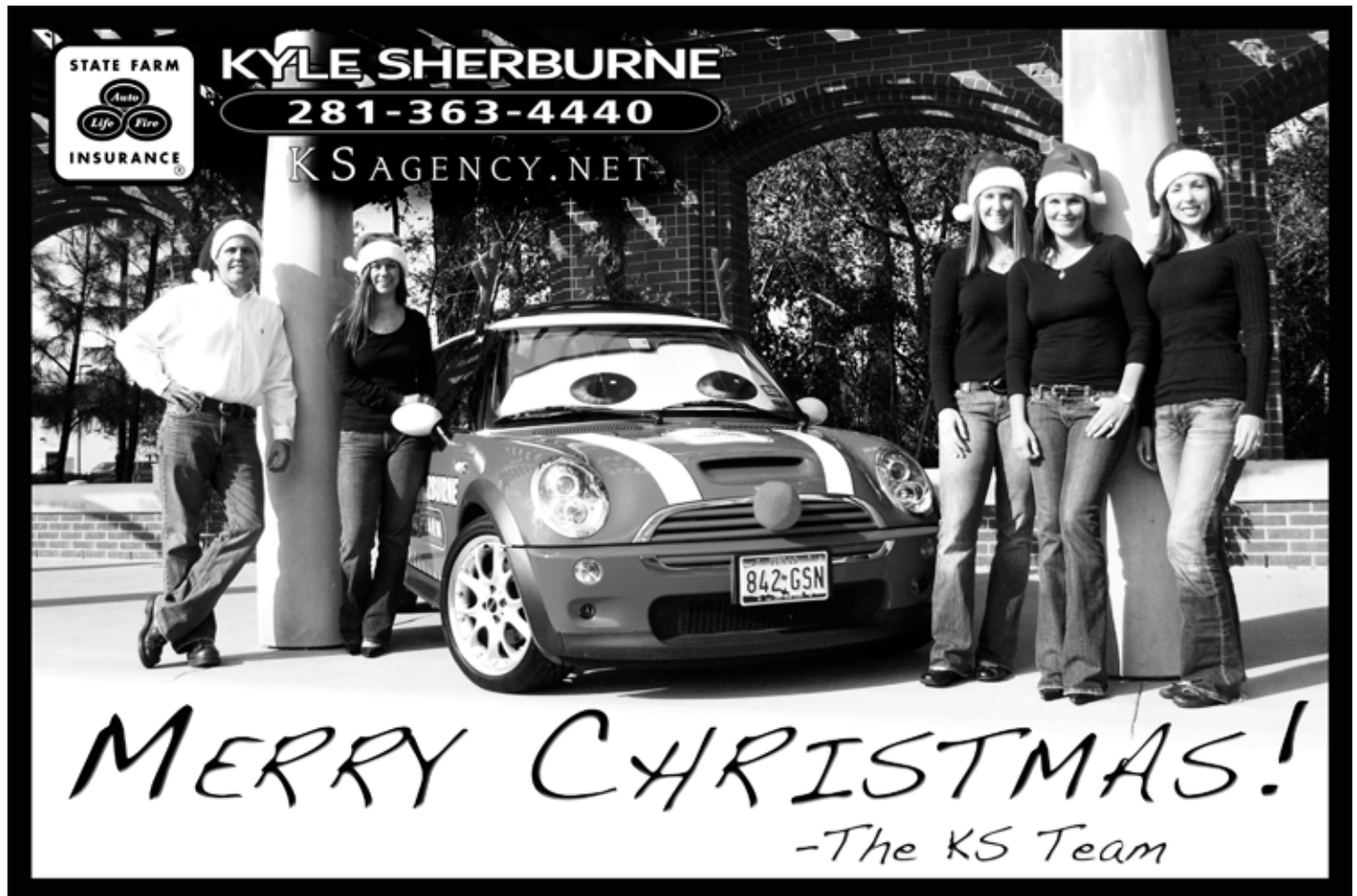
- Plug all outdoor electric decorations into circuits with ground fault circuit interrupters to avoid potential shocks.
- Turn off all lights when you go to bed or leave the house.

Child Safety During the Holidays

(American Academy of Pediatrics, 2008)

- Check www.recalls.gov or www.cpsc.gov for the current list of recalled toys.
- In homes with small children, take special care to avoid decorations that are sharp or breakable. Keep trimmings with small removable parts out of the reach of children to prevent them from swallowing or inhaling small pieces. Avoid trimmings that resemble candy or food that may tempt a young child to eat them.
- Children under age three can choke on small parts contained in toys or games. Government regulations specify that toys for children under age three cannot have parts less than 1 1/4 inches in diameter and 2 1/4 inches long.
- Remove all wrapping papers, bags, paper, ribbons and bows from tree and fireplace areas after gifts are opened. These items can pose suffocation and choking hazards to a small child or can cause a fire if near flame.

(Continued on Page 5)



LEGENDS RANCH

Holiday Safety Tips - (Continued from Page 4)

Home Safety (Houston Police Department, 2005)

- Keep the outside of your home well lit, doors locked, and curtains closed.
- Destroy or place boxes from gifts and/or big ticket items in non-clear garbage bags. Put trash outside as close to trash pickup as possible.
- Avoid placing gifts under Christmas trees displayed in front windows.
- If traveling, use automatic timers for your interior and/or exterior lights. Ask a neighbor to collect your newspapers and park in your driveway.

Holiday Breakfast with Santa & Teddy Bear Drive

Saturday, December 6th
9:30AM to 11:30AM at Rec Center

Take your photo with Jolly St. Nick as we welcome in the Holiday Season! We'll be serving holiday treats and entertainment for children young and old! This year we're also hosting a Teddy Bear Drive benefiting Houston Children's Hospital.

Our Teddy Bear Drive is organized by Sawyer Eldredge, to complete his Eagle Badge! He and fellow scouts will be in attendance to collect the bears during our event.

A couple helpful tips about your teddy bears, they are being delivered to a hospital, used teddy bears, no matter how clean, cannot be accepted. The hospital also asked they not be seasonal, (Valentine, Christmas....) Houston Children's Hospital officials prefer that the donated teddy bears be between 6 and 18" tall.



Legends Ranch Mom's Club

Our activities include organized **play dates, mom's night out, new mom support, group outings** and more! Contact anna@events-ec.com to be added to our roster!

**Braces
a gift that lasts
a lifetime**



**Actual
Patients
& Sisters**

The Woodlands Orthodontics Group

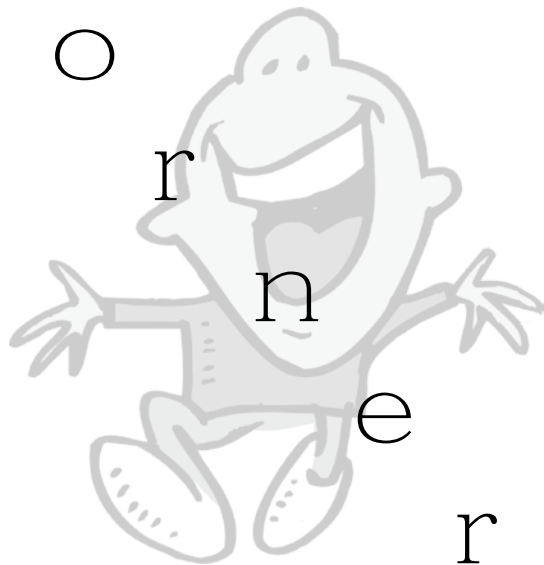
**2211 Rayford Road
Suite 117
Spring, Texas 77386**
(Kroger shopping center
located at entrance to
Imperial Oaks)

Dr. Wm. Jeff Mardaga - Orthodontics
Dr. Michael B. Eshelman - Orthodontics

281-367-7775

LEGENDS RANCH

K i d z



Locate the names of eight parts of a book. Words can go vertically, horizontally, and diagonally.

Do it in less than 3 minutes and you are a Pro!

**K
i
d
z
W
o
r
d
S
e
e
k**

| | | | | | | | | | | | |
|---|---|---|---|---|---|---|---|---|---|---|---|
| H | A | K | X | C | C | W | R | N | M | M | M |
| M | U | F | G | E | O | T | N | M | P | G | K |
| Z | T | L | M | M | D | V | Y | V | E | P | C |
| Z | H | M | H | J | T | N | E | F | N | D | P |
| H | O | K | K | I | L | L | I | R | I | L | Z |
| L | R | Z | T | I | D | L | P | L | P | B | V |
| R | D | L | A | Q | Y | T | M | R | S | D | X |
| P | E | T | F | L | Y | L | E | A | F | Q | D |
| R | O | T | A | R | T | S | U | L | L | I | L |
| L | L | L | Q | Q | W | L | H | G | R | N | T |

AUTHOR
SPINE

COVER
TAIL

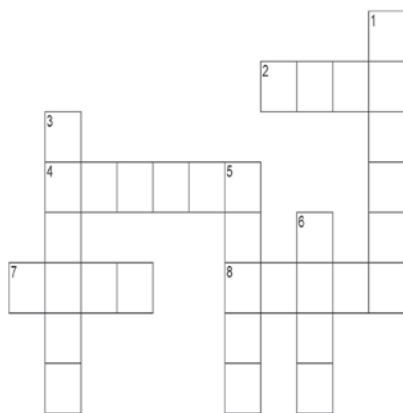
FLYLEAF
ILLUSTRATOR

INDEX
TITLE

© 2007. Feature Exchange

Kidz Crossword Puzzle

Instructions: Match the correct answer with each clue to complete the puzzle.



ACROSS

DOWN

Clue

- 2. Opposite of hot
- 4. Lives alone
- 7. Owes money
- 8. Mad or angry

Answer Clue

- Hermit 1. To guide
- Cold 3. Made from milk
- Irate 5. Use your brain
- Debt 6. Make it clean

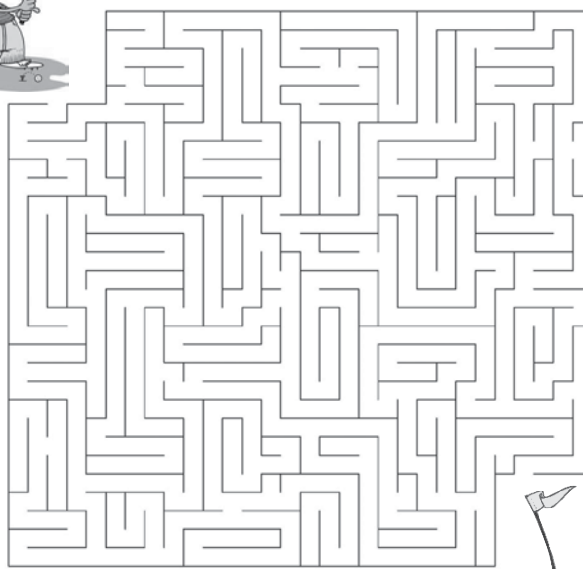
Answer

- Wash
- Think
- Cheese
- Advise

© 2007. Feature Exchange

Kidz Maze Mania

Help the golfer get a hole in one. He can win the tournament if you show him the correct path to the hole.



© 2007. Feature Exchange

Unhappy with with your current preschool?

**We can help. Mention this
ad, and we'll waive your
enrollment fees.**



Helping parents raise happy and smart children

Age-appropriate learning

Learning should be fun. But when you're not developmentally ready, learning becomes a frustrating chore. Our activities and classrooms are 100% age-appropriate and our teachers are trained to recognize each child's individual capabilities.

Child-directed learning

We show children the world through sight, sound, touch, taste and smell—not just a picture on a page. Our teachers, classrooms and curriculum work together to create a total learning environment.

Enrichment programs

We help give your child every advantage possible. That's why we include classes like Spanish, science, cooking, computers, music, tumbling and sign language in tuition. Optional programs like ceramics, dance and sports are available with specialized instructors in small group settings.

Safe and secure by design

From the coded key-pad entry to the internet monitoring system to the floor-to-ceiling tempered glass walls separating every room, your peace of mind is never far from ours.

Learning extends outdoors

Playgrounds designed for each age level and the water park ensure your child will do more than just play with their friends, they'll develop muscles, social skills and motor skills.

Happy kids

The best reason to trust Kids R Kids with your child is the abundance of happy children that fill our school. Nothing we say or do means a thing unless each and every child we care for feels loved, safe and happy.



The Woodlands
320 Valleywood

281.362.9222
www.kidsrkids7x.com

Legends

29910 Aldine Westfield at Rayford

281.363.2227
www.krkleads.com

LEGENDS RANCH

Association's Management Company Contact Information

Planned Community Management (PCMI) has been contracted by the Board of Directors to manage the day-to-day activities of the community. In order to contact the community's Board of Directors or if residents have concerns, questions about their account, or deed restriction violations to report, please put the information in writing and send via e-mail to canyongate@stes.com, or call PCMI – Canyon Gate Communities at 281-504-1360. When calling or emailing, please identify the community call and residents will be directed to the proper representative.

For all Canyon Gate communities on-site managers are available to assist residents. For Legends Ranch, Mitsi is at the Clubhouse at 281-681-9750, and Debbie is at the SplashPad at 281-419-2130. The office hours are 10AM – 6PM Tuesday through Saturday. Please feel free to visit and they will be pleased to assist you with ARC forms, enrollment for electronic entry and to provide you with a copy of the calendar of events.

Seeking Section Leaders and Block Captains

To increase community awareness, the Communications Committee is actively recruiting section leaders and block captains. For more information on becoming a block captain or section leader, please contact Anna Schmidt, Director of Community Events at anna@events-ec.com. To reach your section leader, also contact anna@events-ec.com.

Your 2008 Section Leaders Include:

CANYON LAKES

Section 1: **STILL NEEDED**
Section 2: Desireah Riley
Section 3: Carol Durkin
Section 4: Johnie Cravey

CANYON GATES

Section 1: Roland Garcia
Section 2: Patricia Ricci
Section 3: Charlie Madden
Section 4: Matt Jordan
Section 5: Jeff Gayer
Section 6: Stephanie Palazzo
Section 7: Patricia Parra
Section 8: Kelly Hardwick

LEGENDS RANCH

Section 1: **STILL NEEDED**



SparkPowerBank
www.sparkpowerbank.com
By Spark Energy

**SIGN-UP ONLINE
TODAY!**

We Challenge What You Pay For Electricity!

If SparkPowerBank isn't your current electricity provider...chances are you're paying too much!



I'm Texas Energy Analyst Alan Lammey. Maybe you've heard me on the radio talking about the market forces that drive energy prices. I'm here to tell you that you're not stuck paying those high prices to big electric companies anymore! **Stop it.**

Why pay more than you have to? Those days are over!

Why would you want to go with an electric provider that charges you more, when you can go to www.sparkpowerbank.com and pay far less for the same electricity?

Make sense?

Please choose "Newsletter Ad" as your referral on the SparkPowerBank.com website.

LEGENDS RANCH



Personal Classifieds

Classified Ads

Personal classifieds (one time sell items, such as a used bike...) run at no charge to Legends Ranch residents, limit 30 words, please e-mail anna@events-ec.com



YARD CLIPPINGS REMINDER:

Please refrain from putting yard clippings out before trash pick up day. You're neighbors don't want to see your trash either!

REMINDER:

**BE CONSIDERATE, DO NOT PARK
IN FRONT OF FIRE HYDRANTS
AND REMEMBER TO PARK AT
LEAST 15 FT FROM STOP SIGNS**



PuroClean™

The Paramedics of Property Damage®

Gary A. Voight

PureClean Emergency Restoration Specialist
PH (866) 575-PURO (7876) • FAX (281) 628-0469
330 Rayford Road Suite 318 • Spring, TX 77386
gvoight@PuroClean.com
www.PuroClean.com/ers-tx

WATER

FIRE

BIOHAZARD

Service area covers Northern Harris and Southern Montgomery counties.

Splashpad Texas Office Hours

Onsite Business Office (2nd Floor)
Tuesday through Saturday - 9:00am until 5:00pm
Onsite Community Manager: Deborah Silverstein
Phone: 281-419-2130

Clubhouse Onsite Office Hours

Onsite Business Office Hours
Tuesday through Saturday 10:00am until 6:00pm
Onsite Community Manager: Mitsi Withington
Phone: 281-681-9750

**Advertise
Your Business Here
888-687-6444**



Peel, Inc.
Printing & Publishing

1-888-687-6444

www.PEELinc.com

LEGENDS RANCH

Where Can We Take Our Recyclables?

Montgomery County Recycling Center
Recycling & Reuse Facility
1122 Pruitt Road
Spring, Texas
Monday through Saturday
8:00 a.m. - 5:00 p.m.
281-367-7283 (SAVE)

They will accept aluminum cans, plastic, cardboard, glass containers, metal and paper, call for directions and additional information!

AND

Your community schools also have ABITIBI recycling dumpsters, not only are you doing something good for the environment, but they are fundraisers as well! You can drop off paper and cardboard at the following Abitibi dumpster locations:

Houser Elementary School
27370 Oak Ridge School Road

Vogel Intermediate School
27100 Geffert Wright

Planning on Outdoor Home Improvements?

Please remember that when planning outdoor home improvements, you must first complete an ARC form. This form is submitted to our Architecture Review Committee before construction can begin. For questions or a copy of the form, please call your onsite office at 281-681-9750.

Please Control Your Pets!



Please respect your neighbors' yards.... remember that pets must be confined to a fenced backyard or within your home. They must not be allowed to bark all night or cause a nuisance to your neighbors. They must also be on a leash at all times when not in a contained environment. It is also the pet owner's responsibility to keep **ALL** areas of the community **FREE** from pet debris when walking your pets. Please remember that cats must also be confined.

Peel, Inc. COMMUNITY NEWSLETTERS

Kelly Peel

Sales Manager • kelly@peelinc.com
512-263-9181 ext. 22 • 512-263-9183 fax
www.PEELinc.com



At no time will any source be allowed to use the Legends Ranch Community Newsletter contents, or loan said contents, to others in anyway, shape or form, nor in any media, website, print, film, e-mail, electrostatic copy, fax, or etc. for the purpose of solicitation, commercial use, or any use for profit, political campaigns, or other self amplification, under penalty of law without written or expressed permission from the Legends Ranch Property Owners Association and Peel, Inc. The information in the newsletter is exclusively for the private use of Legends Ranch residents only.

DISCLAIMER: Articles and ads in this newsletter express the opinions of their authors and do not necessarily reflect the opinions of Peel, Inc. or its employees. Peel, Inc. is not responsible for the accuracy of any facts stated in articles submitted by others. The publisher also assumes no responsibility for the advertising content with this publication. All warranties and representations made in the advertising content are solely that of the advertiser and any such claims regarding its content should be taken up with the advertiser.

* The publisher assumes no liability with regard to its advertisers for misprints or failure to place advertising in this publication except for the actual cost of such advertising.

* Although every effort is taken to avoid mistakes and/or misprints, the publisher assumes no responsibility for any errors of information or typographical mistakes, except as limited to the cost of advertising as stated above or in the case of misinformation, a printed retraction/correction.

* Under no circumstances shall the publisher be held liable for incidental or consequential damages, inconvenience, loss of business or services, or any other liabilities from failure to publish, or from failure to publish in a timely manner, except as limited to liabilities stated above.

Milstead
AUTOMOTIVE
One Stop Auto Repair Since 1971



Shuttle
Service
Available!

All of our Employees are Trained
in Customer Satisfaction!

Spring/Woodlands Conroe
281-367-3535 936-756-8500

24 HOUR TOWING SERVICE

Complete Auto Repairs
Rental Cars Available
Collision Center
Transmissions and MORE!

29707 W. Hawthorne
www.milsteadautomotive.com

LEGENDS RANCH

Street Light Maintenance

To report a street light that is not working, contact Centerpoint Energy at 713-207-2222. You will need to provide them with the number located at the base of the pole and the street address. You can also report outages online at www.centerpointenergy.com/outage. outage.



Dog Reminder

Dogs **MUST** be on a leash at all times when not in a contained environment. Please respect the safety of your neighbors!



New To The Community? Just Move In?

We're glad you've chosen Legends Ranch as your new home! Please register at the on-site community office for access to the SplashPad, fitness center and other community amenities! For office hours, directions and additional information, call 281-681-9750.

Advertising Information

Please support the businesses that advertise in the Legends Ranch Community Newsletter. Their advertising dollars make it possible for all Legends Ranch residents to receive the monthly newsletter at no charge. No homeowners association funds are used to produce or mail the newsletters. If you would like to support the newsletter by advertising, please contact our sales office at 888-687-6444 or advertising@PEELinc.com. The advertising deadline is the 10th of each month for the following month's newsletter.

Advertise **YOUR** business
to **YOUR** neighbors for
less than 8¢ per home.

Effective Advertising, Done Right.

Call today to Reserve your space.

Peel, Inc.
COMMUNITY NEWSLETTERS

1-888-687-6444
www.PEELinc.com

LR





Legends Ranch Neighbors:

Want to sell your home in 2009?

Now is the time to start. Invite me over for a free, no hassle walk through of your property. I'll give you a booklet of the things you should be doing now to prepare your property for sale. I'll let you know when the best time to list your property is and what changes will really pay off when you sell.

There are 7 Secrets to Selling in Legends Ranch, which many agents, especially those who specialize in The Woodlands, Conroe, or other subdivisions (like Benders Landing or Imperial Oaks) may not know.

If you are interested in selling your house, please contact me and I will be happy to explain The 7 Secrets to Selling in Legends Ranch & discuss my Legends Ranch neighborhood discount.

Office: 281-203-6000

Cell: 281-217-6367

Email: John.Sizemore@att.net

Web: IsellLegends.com

Your Legends Ranch Realtor©

I specialize in Selling Legends Ranch Homes

All information is deemed reliable but should be verified. SqFt is based on the appraisal district or builders data. Each Keller Williams office is independently owned & operated. Copyright 2008, John Sizemore



***WANT YOURS SOLD?
CALL ME!***

Peel, Inc.
311 Ranch Road 620 S. Ste 200
Lakeway, Texas 78734-4775

PRSRT STD
U.S. POSTAGE
PAID
PEEL, INC.

☎ Voice 512-263-9181

💻 www.PEELinc.com

LR