

# THE Current

## SHADOW CREEK RANCH

Volume 1 Issue 8

Official Publication of Shadow Creek Ranch

August 2009

## Shadow Creek Ranch Offers Two New Options for Office Space

### THE OFFICE CONDOS AT REFLECTION BAY

Are you tired of working from your home? Not as productive with your family around all the time? Then this is the perfect opportunity for you. Be close to your home but be in a separate professional environment!

The Office Condos at Reflection Bay offers 60,000 square feet of possibilities in a five-acre campus setting. The project's attractive, highly functional design is ideal for medical practices and small businesses with offices ranging in size from approximately 1,000 to 6,000 square feet. Construction of the first four condos in Phase I are nearing completion and presales are ongoing for Phase II consisting of another four condos. A final phase of two condos will bring the total condos to ten.

For more information contact Henry Fuertes at 713-436-0834.



*Office Condo*

### SHADOW CREEK BUSINESS CENTER

Shadow Creek Business Center is a master-planned campus featuring two Class-A office buildings totaling 185,000 square feet. Located on the north side of Shadow Creek Parkway between Business Center Drive and Kirby Drive, this complex will be built in two phases.

Phase I: 4-story, 80,000 SF Building (Delivery 2009)

Phase II: 5-story, 105,000 SF Building

### SHADOW CREEK BUSINESS CENTER'S BUILDING FEATURES INCLUDE:

- Available building signage
- Glass curtain wall exterior with architectural precast concrete spandrel panels
- Large open floorplates providing efficient and flexible space planning
- Class A office finishes
- Sustainable energy efficient design
- Fully sprinklered building
- Computerized card-key security access system
- Multi-level structure parking garage (to be completed with Phase II)
- 4/1000 parking
- Ample surface parking

Shadow Creek Business Center is currently under construction. You can view construction photos of the project in the photo gallery on their web site: [www.shadowcreekbusiness.com](http://www.shadowcreekbusiness.com).



*Business Center*

# SHADOW CREEK RANCH

## IMPORTANT NUMBERS

### EMERGENCY NUMBERS

EMERGENCY .....911  
Fire.....911  
Ambulance.....911  
Sheriff – Non-Emergency..... 281-331-9000

### SCHOOLS

Mary Marek Elementary ..... 281-245-3232  
Laura Ingalls Wilder Elementary ..... 281-245-3090  
Manvel Junior High ..... 281-331-1416  
Alvin Senior High ..... 281-331-8151  
Manvel High School ..... 281-245-2235  
Alvin ISD Administration ..... 281-338-1130  
Alvin ISD Transportation ..... 281-331-0960

### UTILITIES

Electricity - Reliant Energy ..... 713-207-7777  
Gas - Center Point ..... 713-659-2111  
Trash Removal - City of Pearland ..... 281-652-1600

### OTHER NUMBERS

Pearland Post Office ..... 281-485-2132  
Poison Control..... 800-764-7661  
Brazoria County Health Department ..... 979-864-1484  
Animal Control..... 281-756-2265

### CITY

Pearland City Hall..... 281-652-1600  
Pearland Utility Billing - Water Dept. .... 281-652-1603  
Pearland Animal Control..... 281-652-1970  
Pearland Police Dept - Non-Emergency ..... 281-652-1100  
Pearland Public Works..... 281-652-1900

### NEWSLETTER

#### Editor

Melanie Smith ..... msmith@amitx.com

#### Publisher

Peel, Inc. .... 512-263-9181

Advertising ..... 512-263-9181

## MGMT COMPANY

### ASSOCIATION MANAGEMENT, INC.

#### Community Manager

Maria Southall-Shaw..... 713-931-1122

#### On-Site Manager

Melanie Smith ..... 713-436-4563

#### Assistant to On-Site Manager

Kimberly Cartwright..... 713-436-4563

#### Service Specialist

Vanessa Aviles ..... 713-984-7265

[www.AMITX.com](http://www.AMITX.com)



## School Zones

School is back in session and Shadow Creek has 3 schools that are in our area that have kids walking home. The school zones are there to protect our kids from unnecessary accidents due to people not following the speed limit. The school zones times for the morning is 7:15am - 8:15 am and in the afternoon it is 2:45pm until 3:45pm during this time in these zones the speed limit is 20 mph. Use caution when kids are in cross walks we have had kids hit in the cross walks by poor judgement by the drivers. Just because some area's have crossing guards does not mean to rely on the guard to know right from wrong. Us good judgement and our kids will arrive home with out being hit by a speeding car or a driver with poor judgement.

You can contact Lt. J Caballero 281-652-1132 to let him know of any issues regarding the school zones



**OBJECTIVE: Personal Service**

11711 Shadow Creek Pkwy, #145

**WELCOME!**

**713.436.4707**

[www.LeBlancInsuranceAgency.com](http://www.LeBlancInsuranceAgency.com)

**Personal & Business Insurance**



# M & R

## Custom Woodworking

Custom Cabinets • Fine Mill Work  
Interior Woodworking

**Michael Jager**

3705 Halik #1 • Pearland, TX 77581  
P: (713) 299-6793 • F: (281) 992-1067

## Shadow Creek Ranch Resident Scott Sherman Wins Seat on Pearland City Council

Shadow Creek Ranch congratulates Scott Sherman on his victory in the run off election for Pearland City Council Position #2. Councilmember Sherman was sworn in on Monday, June 29th.

### ABOUT SCOTT SHERMAN

Scott Sherman, a Shadow Creek Ranch resident, has lived in Pearland since 2003. He is an attorney with the law firm of Shannon, Martin, Finkelstein & Alvarado, P.C.

Since 2006, Scott has served on the board of directors for Brazoria County Municipal Utility District #26. He initially served as an assistant vice president and currently serves as vice president of the board. Scott is also a former member of the City of Pearland Parks, Recreation and Beautification Board.

Scott graduated from the University of North Texas with a degree in Emergency Administration and Disaster Planning. He is a 2001 cum laude graduate of the University of Houston Law Center.

"It's an exciting time to be a resident of the city of Pearland. I hope to bring my experience and vision to the Council table to tackle the challenges faced by the city. I want to work to continue to make Pearland a place we are all proud to call home. From day one, I plan

to listen to all of the citizens of our city and act on their wishes," says Scott Sherman on his web site [www.shermanforpearland.com](http://www.shermanforpearland.com).

### PEARLAND CITY COUNCIL

The City Council is the legislative and policy-making body of the City. It consists of 5 members elected at-large for a 3-year, staggered terms. The Mayor and Council provide community leadership, develop policies to guide the City in delivering services and achieving community goals, and encourage citizen awareness and involvement. Unless otherwise rescheduled, the City Council meets on the second and fourth Mondays of each month at 7:30 p.m. at City Hall located at 3519 Liberty Dr, Pearland, TX 77581.

Two City Council positions will be opening up next year. Shadow Creek Ranch encourages its residents to become involved city government by running for election or become part of a nominee's campaign. Voters from Shadow Creek Ranch who turned out in great numbers for Scott Sherman were hugely instrumental in securing him victory. Shadow Creek Ranch looks forward to supporting more nominees from our community in the future.

**Mortgage rates are very LOW!  
Tax incentives are very HIGH!**

**Are you READY to buy?**

**SET to sell?**

**GO! Call Me!**

**Together, we can win!**



*Your Home Coach*  
**832-428-6207**  
*RE/MAX Top Realty*

*Your Home Coach*  
**VINCE KEARNEY**  
*PearlandHomeCoach.com*



**CERTIFIED DISTRESSED PROPERTY EXPERT®**

**As a CDPE® and Realtor®  
I have specialized training & expertise  
in SHORT SALES and  
PREVENTING FORECLOSURES.**

**If you are a homeowner in  
FINANCIAL DISTRESS and may face  
a foreclosure, you do have options.**

**If you act quickly,  
I may be able to help.**

**Call me TODAY  
for a confidential consultation.**

**832-428-6207**

**For more information, visit my website:  
[PearlandHomeCoach.com/foreclosures.asp](http://PearlandHomeCoach.com/foreclosures.asp)**

# SHADOW CREEK RANCH

## Greetings Residents:

I hope you all enjoyed your Fourth of July holiday and are having a wonderful safe summer. This summer we have introduced a Swim Team, Soccer Camp, a Junior Tennis Camp and a Basketball Super day. We hope that this will be just the beginning of more fabulous activities offered in your community.

We are looking at entering the 2009-2010 school year with changes that will improve your quality of life and make Shadow Creek Ranch an even more exciting place to live.

### SECTION REPRESENTATIVES

So far we have folks who have volunteered to represent Pinecrest, Reflection Point, Silver Leaf and Sunset Shores. Ideally we would like 2 reps per section. **The goals of the section rep are to:**

- Act as a liaison between the HOA and your neighbors
- Collect information regarding new neighbors, new babies, extraordinary actions of residents etc.
- Assist in forwarding your neighbors concerns and requests to your Village Representative and HOA
- Assist in communicating SCR events and news with your neighbors
- Submit your local section news to the HOA for input in the monthly newsletter

Please email Msmith@amitx.com immediately if you are interested. Remember, community involvement makes for a better living environment.

### TRASH PICK UP

Please remember that putting your trash out early invites rodents and other unwanted creatures into your neighborhood. It is also very visually unappealing. Please keep your trash in a secured out of view container until the approved times for putting it out. You may not put your trash out earlier than 6pm the day before pick up. If you are unsure as to pick up days when there is a holiday, please contact the City of Pearland at 281.658-1600.

### FENCE STAINS

Fences must remain the natural wood color with only a clear natural stain over them. If you need to refurbish your fence you must submit an application to A.M.I.

### EXTERIOR IMPROVEMENTS

During our inspections we have noticed some new backyard structures in some of the homes in Shadow Creek Ranch. It is important that all residents understand that Architectural applications

*(Continued on Page 5)*

## Money Market

*Rate guaranteed for 3 Months!*

# 1.75% APY\*

**Only \$10,000 required to earn this great rate!**

*We'll treat you like family!*

\*The Annual Percentage Yield (APY) of 1.75% on the Performance Money Market account with balances of \$10,000 and above (0.25% APY on balances from \$2,500 to \$9,999.99 and 0.15% APY on balances less than \$2,500.00) is available to retail customers who bring in at least \$10,000 in funds currently not on deposit at First Bank and have an active First Bank checking account. The promotional 1.75% APY is guaranteed for 3 months following the qualifying deposit. After that, the APY is variable. Rate accurate as of July 10, 2009. Fees may reduce earnings. Offer subject to change without notice. Minimum \$100 to open.

## LIQUIDITY. FLEXIBILITY. GREAT RATE.

- ✓ FDIC Insured
- ✓ Right in your backyard
- ✓ A relationship you can count on
- ✓ Family-owned, privately held

Shadow Creek Ranch  
11451 Broadway St.  
Broadway (Hwy. 518) at Kirby  
**713-340-0652**



Member FDIC

*firstbanks.com*



# SHADOW CREEK RANCH

## *Greetings Residents- (Continued from Page 4)*

must be submitted and approved before any changes or additions can be made to the exterior of your property. Failure to comply with this bylaw may result in legal fees at your expense, and you may wind up spending additional monies to remove your addition or amend it in accordance with the bylaws. Please remember that these bylaws are here to protect all residents. We are here to enforce them.

## COMMUNITY ACTIVITIES

Please email me with any suggestions regarding specific community activities that you would like facilitated in Shadow Creek Ranch.

## TENNIS TENNIS TENNIS

We are working on a more efficient way to manage the reservation system. SCR seems to be quite a tennis community. Due to a limitation of court space we will be coming up with some new ground rules. Forthcoming will be new reservation guidelines. **In the meantime:**

- + Any structured tennis program must be approved the HOA.
- + There is no barbequing allowed under the pavilion at the tennis courts – this is a fire hazard.
- + Private lessons are allowed however structured group lessons must be approved by the HOA

The Shadow Creek Ranch Tennis Club is now in operation. Our

Tennis Club Pro is Shadow Creek Ranch resident Chris Moorehouse. His assistant is resident Richard Perreras. You may reach Chris at Cmorehouse12@yahoo.com. Chris has been diligently working to organize the SCR Tennis Club. In addition, on a professional level, he will be facilitating a JR Camp as well as Adult drills. This is a step toward offering a professional tennis program to you as well as having a properly managed tennis social club. Please provide feedback to msmith@amitx.com.

That's about it for now folks. Enjoy the rest of your summer .

Melanie Smith

On-Site Manager

713.436.4563

Msmith@amitx.com

## Advertising Information

Please support the businesses that advertise in Shadow Creek Ranch Newsletter. If you would like to support the newsletter by advertising, please contact our sales office at 512-263-9181 or [advertising@PEELinc.com](mailto:advertising@PEELinc.com). The advertising deadline is the 10th of each month for the following issue.

**Quality**  
**PRINTING COMPANY**



**BUSINESS FORMS  
NEWSLETTERS  
FLYERS  
ENVELOPES  
LETTERHEADS  
NCR SNAP APART  
FORMS  
RUBBER STAMPS  
BUSINESS CARDS**

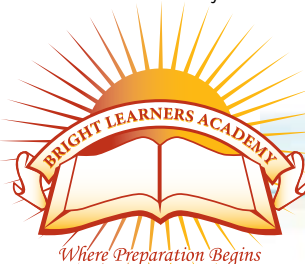
*Solving all your printing needs.*  
**1-888-687-6444 ext. 24**

## Preparation Begins at Bright Learners Academy

★ **BLA Fall Program Begins August 17<sup>th</sup>,** ★  
**Spaces are Limited, Register Now!**

### Our Program

- Experienced Caring Teachers with Ed. Degrees
- Accelerated Academic Program
- Full Day Program - Monday through Friday
- Hours are 6:30 a.m. - 6:30 p.m.
- Interactive Learning Stations
- Character Building Education
- Safe Secure Environment
- Field Trips - They Come to BLA
- Developmental Playground
- Favorable Student/Teacher Ratios
- For Students 3 to 5 years old



**713.436.8500 - [www.brightlearners.net](http://www.brightlearners.net)**

**GREAT BIG DEAL!**

*Get the wick  
you want*



*Choose 1 of 5  
great offers  
when you purchase  
a wick and  
bring in this flyer.*

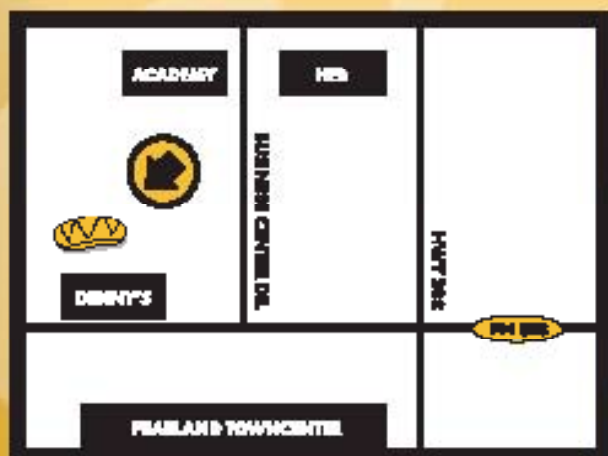
- ☐ \$2 off a combo
- ☐ Free drink
- ☐ Free cookie
- ☐ Free chip & drink
- ☐ 2 for 1 shakes

*Offer valid now through December 31, 2009.  
One offer per bag per visit.*

*This coupon may be used up to 5 times until all offers have been used.*

**THIS OFFER IS GOOD ONLY AT THE  
PEARLAND  
WHICH WICH LOCATION**

**PEARLAND**  
Hwy 518 and Hwy 288  
Behind Denny's  
**713.433.9424**



 **whichwich.com**



## Brazoria County Municipal Utility District No. 26

Brazoria County Municipal Utility District No. 26 is pleased to announce that Director Scott J. Sherman ran for and has been elected to the Pearland City Council!

Scott, a Shadow Creek Ranch resident, is eager and ready to represent all of Pearland and encourages all residents to attend Pearland City Council meetings. Scott began serving as a Director of Brazoria County Municipal Utility District No. 26 (the "District") on February 7, 2006, and has served as Vice President and Assistant Vice President. During his time on the Board of Directors, the District's tax rate has decreased from \$0.85 to \$0.71 per \$100 assessed valuation. The District looks forward to continuing the strong relationship between Shadow Creek Ranch and the City of Pearland. The Pearland City Council meets on the second and fourth Mondays of each month at 7:30 p.m. at the Council Chambers, City Hall, 3519 Liberty Drive. For more information and copies of the City Council agendas, please visit the City's website at [www.cityofpearland.com](http://www.cityofpearland.com).

As a reminder, the City of Pearland operates our water and sewer system, and provides garbage collection services. If you have any questions about your service, please call the City of Pearland at (281) 652-1603.

Brazoria County Municipal Utility District No. 26 generally meets the first Tuesday of each month at 11:00 a.m. at the offices of Allen Boone Humphries Robinson LLP, 3200 Southwest Freeway, Suite 2600, Houston, Texas 77027. Agendas for each meeting are posted at the Emerald Village Recreation Center, 11814 N. Clear Lake Loop, Pearland, Texas 77584, and at the Brazoria County Courthouse at least 72 hours before every meeting, and the Board of Directors invites all members of the public to attend its meetings. Please contact (713) 860-6488 if you need confirmation of a Board meeting.

## It's Not Easy Being Green

*Written by Mimi Howard*

Most of us live full busy lives, filled with work, family responsibilities and chores to manage daily.

It's not unusual to feel the added expectation to go Green the one challenge that just might throw us over the edge. As much as we appreciate the need to conserve energy and reduce our fat ugly carbon footprint, we just don't seem to have enough hours in the day and the energy to be Green. So we give up, there may be times we might cursorily toss a plastic container and bury it deep down in the trash can to hide our shame.

Compiled here a few simple tips that will help you make a positive environmental impact without spending too much time, effort or money and contribute to the overall reduction of that carbon footprint. **You too can Go Green almost effortlessly;**

- \* Use less water by letting your dishes soak a while if hand washing to reduce the time your faucet is running.
- \* Don't toss your expired box of Baking soda. Make a paste by adding a few teaspoons white vinegar for very effective kitchen, bathroom cleaning jobs and stain removal for your laundry.
- \* Avoid pesticides in your garden by planting Marigolds or Chrysanthemums, which produce a chemical many insects and critters find unattractive.
- \* Bring water to a boil faster by using a pot lid
- \* Treat your party guests like VIP's by putting out glassware, avoid buying Styrofoam and disposable party ware.
- \* Reduce the amount of unwanted catalogs go to [catalogchoice.org](http://catalogchoice.org) to be removed from further deliveries
- \* Pass on magazine subscriptions to friends or donate to local libraries
- \* Re-use pass along toys and clothes your children no longer need, a great local resource [Freecycle.org](http://Freecycle.org)



STAMPED CONCRETE ETC.COM

"From Vision to Creation"

MLS

Patios & Landscapes

281-489-0126

# SHADOW CREEK RANCH



**dogS gone good**  
*expert help for you and your dog*

**Dog Obedience Class  
Dog Boarding School  
Private Training**

Tricia Fagan  
Certified Professional  
Dog Trainer

(713) 557-1949  
trainer@dogSgonegood.com  
www.dogSgonegood.com

**Advertise  
Your Business Here  
888-687-6444**

## Bashans Painting & Home Repair

**Commercial/Residential  
Free Estimates**

**281-347-6702**



**281-731-3383 cell**



- Interior & Exterior Painting
- Hardi Plank Installation
- Wood Replacement
- Sheetrock Repair
- Interior Carpentry
- Cabinet Painting
- Wallpaper Removal and Texturizing
- Pressure Washing
- Fence Repair/Replacement
- Garage Floor Epoxy
- Custom Staining

**References Available • Fully Insured  
NO PAYMENT UNTIL COMPLETION**

bashanspainting@earthlink.net

## Shadow Creek Ranch Salsa Club (aka SCR Salseros)

*Dear Friends,*

Join the Latin dance revolution and become part of SCR Salseros! Would you like to learn how to dance Salsa? Think you have "two left feet" or no rhythm? Are you looking for a fun, new activity for you and your significant other? Or are you single and wanting to meet new people? We offer comprehensive, patient and humorous instruction in Latin dancing, so you can learn to dance and have a fabulous time! No dancing experience or partners required. Visit <http://www.scrsalsa.com> For info, please contact Christian Gutierrez via email at [christian@latindancefactory.com](mailto:christian@latindancefactory.com) (preferred) or via phone at 832-693-5842 for more information.



**For your calendar (RSVP by email please)**

- Saturday, August 29, 2009; 6:00pm to 9:00pm. Salsa Social with new and existing SCRS members. Free latin class starts at 7:00pm
- Thursday, August 20, 2009; 8:30pm to midnight. Las Haciendas (12933 Gulf FwyHouston, TX 77034) we will be hosting our monthly salsa outing.

*Hope to hear from you soon. Keep on dancing! Christian*



*June Salsa Social*

## HOA Payments

Please note that HOA payments may be conveniently made at the office at 1920 Kinglsey Rd on the corner of 2234 and Kingsley or online at [www.amitx.com](http://www.amitx.com) with Amex, Discover or Mastercard.



# SHADOW CREEK RANCH

## Scr Belly Dance Club

*Get ready to use your feminine curvatures  
in the sensual art of Belly Dancing.*

DON'T BE SHY! COME JOIN THE FUN!

This Middle Eastern Dance is an exotic yet graceful form of dance. Isolation of the hips and midsection including undulations, locks, and shimmies are the most popular moves. Beautiful chest and arm gestures are an ideal technique to develop. Strong flexible midsection muscles are important to control the duration and power of specific moves. It is an exciting dance in which women use their natural curvatures to interpret rhythms of instruments with the most emphasis on percussion.

Contact/Reservations: Miriam at [miriambellydance@gmail.com](mailto:miriambellydance@gmail.com) or at 915.487.6474. For detailed information visit <http://www.miriambellydance.com/>.



FREE Belly Dance Crash Course  
Social. Thursday August 27 at  
7 pm. Everyone is welcome.  
No dancing experience  
required.

## Shadow Creek Soccer Club (Youth)

Drive to practice and games in 3 minutes! Shadow Creek Soccer Club Fall registration deadline is August 20!! Ages 4-9. Fall season begins September 19 with practices beginning one or two weeks prior. Your child will play on a neighborhood team, receive a full uniform, KidSafe protection, extra free skills training if desired, and trophy. Games are Saturday mornings 8 am - noon. Practice times are set by team parents. For more information, visit the Club's website at <http://www.shadowcreeksoccer.org>.

Join the fun and register at <http://www.shadowcreeksoccer.org>.

Take care, Angelicque Guzman

# Soccer

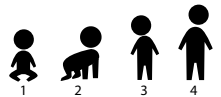


## COLIN'S HOPE

*Increasing water safety awareness and standards*

### FACTS YOU NEED TO KNOW ABOUT DROWNING

Drowning is the leading cause of unintentional injury-related death in children ages 1-4



### DROWNING WILL AFFECT YOU OR SOMEONE YOU KNOW



Drowning is the 2nd leading cause of unintentional injury-related death ages 1-14.

For more information,  
check out our website at

[www.colinshope.org](http://www.colinshope.org)

### DROWNING CAN STILL OCCUR EVEN IF YOU KNOW HOW TO SWIM

NO ONE is "drown proof" – no matter their level of swimming ability.

Falls, entrapments, and injuries lead to drowning regardless of swimming level.

A majority of people overestimate their own and their child's ability to swim, especially in a panic event.

### DROWNING IS QUICK AND SILENT



Drowning occurs in as little as 2 minutes.



Irreversible brain damage occurs in as little as 4 minutes.



Most children are out of sight or missing for less than 5 minutes and usually in the presence of 1 or both parents.



Most children die who are submerged for as little as 6-10 minutes.

Children who drown do not **scream, splash, or struggle**. They silently slip beneath the water, even with adults & lifeguards present.

# SHADOW CREEK RANCH



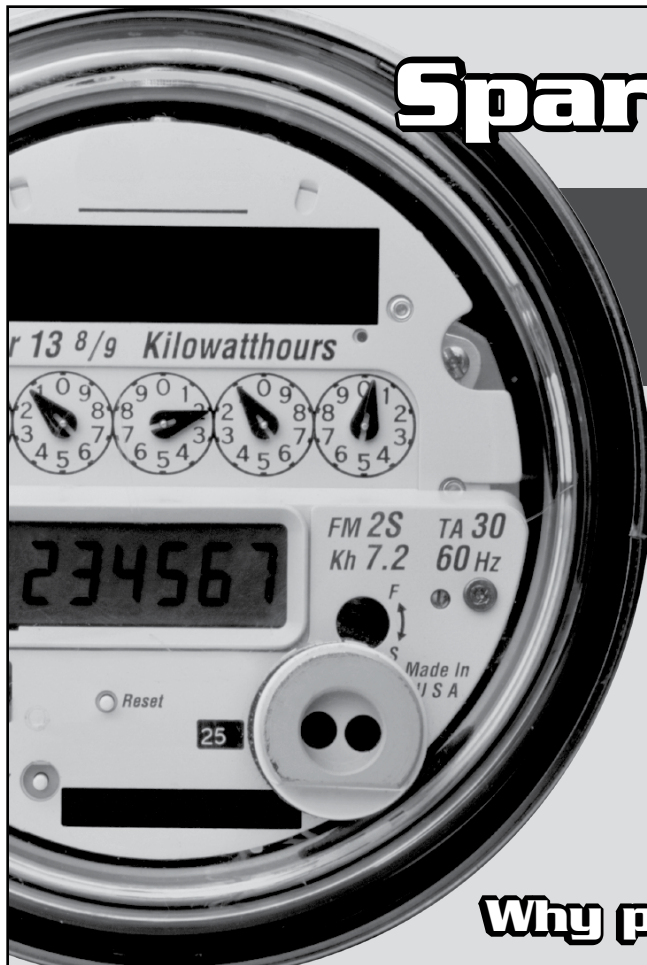
## *Friday Night Flics*

August 14 – Paul Blart Mall Cop, rated PG

August 28 – Monsters Vs. Aliens, rated PG

**Pearland's Independence Park,  
3919 Liberty Drive, Movie  
starts @ Dusk**

Bring your family and join us for a fun evening outdoors watching a family friendly movie on a drive in size big screen. This is a FREE event – bring your blanket, lawn chair, and picnic basket. For more information and movie titles call 281-652-1673 or log onto [www.pearlandparks.com](http://www.pearlandparks.com).



## Spark Power Bank

***We Challenge What  
You Pay For Electricity***

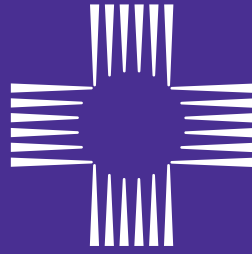
**SIGN-UP ONLINE TODAY!**

**[WWW.SPARKPOWERBANK.COM](http://WWW.SPARKPOWERBANK.COM)**

*Please choose "Newsletter Ad" as your referral*

**I'm Texas Energy Analyst Alan Lammey. Maybe you've heard me on the radio talking about the market forces that drive energy prices. I'm here to tell you that you're not stuck paying those high prices to big electric companies anymore!**

**Why pay more than you have to?**



ST. LUKE'S®

Community  
Emergency Center  
*Pearland*

---

**NOW OPEN**

---

11713 Shadow Creek Pkwy. (at Kirby)  
Pearland, TX 77584

**713-793-4600**

[www.stluketexas.com/cec](http://www.stluketexas.com/cec)

**Emergency Care**  
in your neighborhood...**24/7/365**



# SHADOW CREEK RANCH



## FREE YOGA

*Join us Monday August 31st 7pm-8pm at Reflection Bay Pool for Aqua Yoga (weather permitting).*

Join us Monday September 28th either 9:00am or 8:30pm for a FREE Bikram Yoga Class located at 2810 Business Center Drive, Suite 102, Pearland, Texas 77584. After the morning session, join us at Jamba Juice for socializing and a healthy juice breakfast. Bikram Yoga is the original hot yoga everyone is talking about and famous for it's miraculous healing ability. It is a 90 minute series of 26 beautiful yoga postures and breathing exercises taught in 105' heat and 50% humidity. Each pose is a challenge based on individual abilities. During every Bikram yoga class you will work every cell, organ, tissue and joint in your body .

### ARRIVE 15 MINUTES EARLY TO REGISTER.

- Classes are 90 minutes. Be prepared to work hard and sweat.
- Women, wear lycra sport shorts, athletic bra tops, leotards. Men, wear lycra bike-style shorts or sports shorts.
- Yoga is best practiced on an empty stomach.
- You must use a sticky mat (we rent and sell mats-- mats are free for the first 2 classes).
- Bring bottled water and 2 towels

Please RSVP to join the Shadow Creek Ranch Yoga Club by emailing [info@BodyBalanceTherapies.com](mailto:info@BodyBalanceTherapies.com) or calling 713 436-9006

## Emergency Room Open 24 Hours

### Ready or not... we are.

Texas Emergency Care Center is open **24 hours a day.**

We're committed to delivering comprehensive medical services in a comfortable environment with little to no wait time – day or night.

You'll experience:

- A full-service facility equipped with a complete laboratory, radiology, CT scanning and cardiac monitoring.
- Prompt, friendly and caring service.
- Quality face time with a physician who is Board Certified in Emergency Medicine.

**After all, emergencies just can't wait.**

## 281-648-9113

All private insurance accepted.



TEXAS  
EMERGENCY CARE  
CENTER AT PEARLAND



FM 518 at Dixie Farm Road  
3115 Dixie Farm Road, Suite 107

**[www.txercare.com](http://www.txercare.com)**



Accredited by the Joint Commission of  
Accreditation of Healthcare Organizations  
for our commitment to excellence.



Not Available Online

## Classified Ads

**Personal classifieds** (one time sell items, such as a used bike...) run at no charge to Shadow Creek Ranch residents, limit 30 words, please e-mail [msmith@amitx.com](mailto:msmith@amitx.com).

**Business classifieds** (offering a service or product line for profit) are \$50, limit 40 words, please contact Peel, Inc. Sales Office at 512-263-9181 or [advertising@PEELinc.com](mailto:advertising@PEELinc.com).

## Peel, Inc.

### Printing & Publishing

Publishing community newsletters since 1991

## Support Your Neighborhood Newsletter.

**Kari Harrison**  
Sales Representative  
713-855-1731  
[kari@peelinc.com](mailto:kari@peelinc.com)



*Advertise your business  
to your neighbors.*

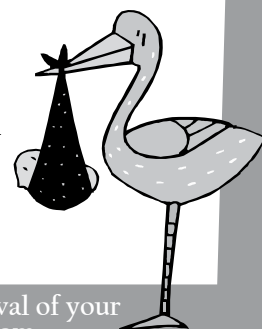
**1-888-687-6444      [www.PEELinc.com](http://www.PEELinc.com)**

## Stork Report in Shadow Creek Ranch

Jack Marcial Ferguson  
Born 6/17/2009 at 9:31 AM  
8 lbs 15 oz, 20.5 inches

Proud Parents:  
Jason & Susannah Ferguson

Proud Big Brother:  
Belsey Ferguson



Submit your information on the arrival of your little one to [msmith@amitx.com](mailto:msmith@amitx.com)

**No Matter the Event, Graduation, Wedding, Shower, etc. We Can Help.**

Housework won't kill you, but why risk it. Let our gloves do your dirty work!

1st Quality Service  
Competitive Rates

Call about our special rates for:

Up To 3 Bedrooms  
+ 2 1/2 Baths,  
Kitchen, Living Room  
& Dining Room.\*  
\$9 Each Additional Room  
(Reg. \$10)

\* Rate based on bi-weekly service after initial cleaning for homes less than 3000 sq. ft. Restrictions apply. Call for details.

- ✓ Weekly, Bi-Weekly, Monthly and One-Time Services
- ✓ Detail Services
- ✓ Move In/Outs
- ✓ Homes and Offices
- ✓ Fully Trained Staff
- ✓ Bonded and Insured
- ✓ All Equipment and Supplies Provided

[www.whiteglovescleansvcs.com](http://www.whiteglovescleansvcs.com)  
Not affiliated with any other White Gloves Cleaning.

**\$25 Off**

Our Detail Service  
With Coupon Only. Expires 8/31/09.

**\*FREE**  
Refrigerator or  
Oven Cleaning

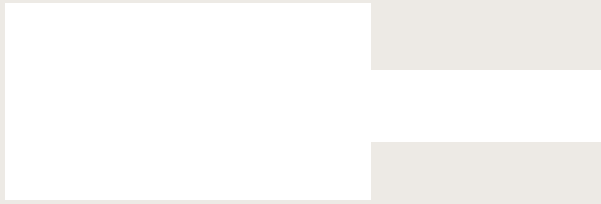
When Setting Up Bi-Weekly or Weekly Regular Service (\$20.00 Value)  
\* \$5.00 off your service for referral Unlimited!  
With Coupon Only. Expires 8/31/09.

✧ White Gloves Kleaning Services ✧

Call 281-99-SLIME for a Free Phone Estimate!  
(281) 997-5463



# Tired of Shopping for Groceries?



☒ Easy Online Ordering!

☒ Great Prices!

☒ Delivery Only \$4!

## Have Them Delivered!



Changing the  
way you shop  
for Groceries.

- Offering warehouse club prices with no membership fees, no lines, and no traffic.
- Save Time: A trip to the store can easily take a few hours. Let us ship for you.
- Save Money: Save up to \$100 per year on membership fees and gasoline, and still get great club prices.
- Save Gas: At only \$4, delivery is cheaper than driving there yourself!
- Delivery only \$4, waived on your first order!

# Phone: 713-344-1515

## [www.GroceriesToGo.biz](http://www.GroceriesToGo.biz)



# SHADOW CREEK RANCH

The Current is the official publication of the Shadow Creek Ranch Maintenance Association. At no time will any source be allowed to use The Current's contents, or loan said contents, to others in anyway, shape or form, nor in any media, website, print, film, e-mail, electrostatic copy, fax, or etc. for the purpose of solicitation, commercial use, or any use for profit, political campaigns, or other self amplification, under penalty of law without written or expressed permission from the Shadow Creek Ranch Maintenance Association and Peel, Inc. The information in the newsletter is exclusively for the private use of Shadow Creek Ranch and Peel, Inc.

**DISCLAIMER:** Articles and ads in this newsletter express the opinions of their authors and do not necessarily reflect the opinions of Peel, Inc. or its employees. Peel, Inc. is not responsible for the accuracy of any facts stated in articles submitted by others. The publisher also assumes no responsibility for the advertising content with this publication. All warranties and representations made in the advertising content are solely that of the advertiser and any such claims regarding its content should be taken up with the advertiser.

\* The publisher assumes no liability with regard to its advertisers for misprints or failure to place advertising in this publication except for the actual cost of such advertising.

\* Although every effort is taken to avoid mistakes and/or misprints, the publisher assumes no responsibility for any errors of information or typographical mistakes, except as limited to the cost of advertising as stated above or in the case of misinformation, a printed retraction/correction.

\* Under no circumstances shall the publisher be held liable for incidental or consequential damages, inconvenience, loss of business or services, or any other liabilities from failure to publish, or from failure to publish in a timely manner, except as limited to liabilities stated above.

## Sudoku

The challenge is to fill every row across, every column down, and every 3x3 box with the digits 1 through 9. Each 1 through 9 digit must appear only once in each row across, each column down, and each 3x3 box.

|   |   |   |   |   |   |   |   |   |
|---|---|---|---|---|---|---|---|---|
|   |   |   |   |   |   |   |   | 7 |
| 6 | 7 | 2 |   |   | 1 |   |   |   |
| 5 |   |   |   | 6 |   |   | 9 | 2 |
| 7 |   | 5 |   |   |   |   |   |   |
|   | 4 |   |   |   |   |   |   |   |
|   | 1 | 6 |   | 2 |   |   | 4 | 9 |
|   |   |   |   | 4 |   |   |   | 6 |
|   |   | 8 |   | 1 | 7 |   |   |   |
|   |   | 9 | 3 | 8 |   | 1 |   |   |

\*Solution at [www.PEELinc.com](http://www.PEELinc.com)

© 2007. Feature Exchange

## Located in Shadow Creek!



- Comprehensive Eye Health Exams
- Contact Lens Exam & Fitting
- Lasik & Cataract Surgery Consultation
- Children's Eye Exams



## Dr. Dipak R. Kalani

# Vision Source!® Family Eye Care

11601 Shadow Creek Pkwy  
Suite #113  
Pearland, Tx 77584  
**713-436-7544**

*Designer Frames & Sunglasses*

GUCCI dK Ray-Ban

OAKLEY VERSACE

[www.VisionSource-ShadowCreek.com](http://www.VisionSource-ShadowCreek.com)

### COMPLETE PAIR OF GLASSES

With Thin Lenses  
**\$99**

Offer includes frames from special collection and thin, clear, single-vision polycarbonate lenses. Current Rx required. Not valid with any other offer or insurance plan. Expires 8/31/09

**Vision Source!**

### EXAM AND CONTACTS

**\$119**

Includes eye exam, 6 pair clear, disposable spherical visitant contacts, care kit and follow-up visit. Not valid with any other offer or insurance plan. Expires 8/31/09

**Vision Source!**

|                      |                        |                        |                         |                         |                          |
|----------------------|------------------------|------------------------|-------------------------|-------------------------|--------------------------|
| 3630 Apple Grove Dr. | 4025 Ravensway Ct      | 6322 Gabrielle Canyon  | 4003 Spring Meadow Dr   | 3006 Gorom Court        | 4230 Chisholm Trail      |
| 1102 West Belgravia  | 4041 Quail Run         | 2007 North Kamren      | 811 Tennyson            | 1018 Norfolk            | 4010 Aerial Brook Trail  |
| 3110 Summerfield     | 4434 Morris            | 8318 Phantom Mist      | 9210 Lakeway View       | 2618 Granite Court      | 2317 Willow              |
| 3402 Beacon Bend     | 3415 Coral Springs Dr. | 3314 Knollcrest        | 21903 Sage Mountain     | 3627 Hansford Place     | 4318 Grapevine           |
| 2918 Becket          | 918 East Hampton       | 205 South Illinois     | 2994 CR 855B            | 4103 Mustang            | 3203 Wheatmeadow         |
| 4902 Linden Place    | 4103 Cleburne          | 4615 Kimball Drive     | 13214 Ridgewood Knoll   | 11407 Windy Creek       | 4215 Bentley             |
| 3014 Southworth      | 13011 Misty Bay        | 1928 Meadow Creek      | 2711 Alameda Plaza      | 2401 Sun Spot           | 2923 Burgess Hill Court  |
| 3018 Southdown       | 22111 Kenlake Drive    | 14122 Concord Meadow   | 1119 Wentworth          | 2202 Shady Bend         | 910 Knoll Forest         |
| 3519 Cascade Springs | 3514 Brandemere        | 2617 Easton Springs    | 1315 Sandpiper          | 3213 Sumac              | 3411 Highland Point      |
| 3305 Claymill Lane   | 8106 Windy Creek       | 3902 Beechwood         | 2702 Garner Court       | 310 Gregg               | 2406 Sail Port           |
| 7026 Castlevue Lane  | 4112 Caneshaw          | 2702 Hidden Bay Court  | 6402 Windy Way          | 3619 Pemberton          | 3027 Helmsley            |
| 430 Glen Park Drive  | 16915 Creeklane        | 3407 Helen             | 6509 Lauren             | 4118 Seminole           | 11306 Palm Bay           |
| 2206 Appian Way      | 16915 Creeklane        | 3115 Timberwood        | 5710 Grapevine          | 19006 Sandia Pines      | 1015 China Grove         |
| 3522 Hansford        | 2423 Covington Way     | 2607 Pinebend          | 3219 Edgewood           | 3302 Wolf Court         | 2622 Umiak               |
| 1010 Abbott          | 2462 Country Club      | 3127 Noel Court        | 3423 Monarch Meadow     | 2423 Quiet Arbor Lane   | 1003 Covington           |
| 3422 Endicott        | 8106 Windy Creek       | 1906 Courtside Place   | 1526 Monterra Point     | 12609 Rio Bravo         | 2710 West Oaks Blvd      |
| 4907 Clover Lane     | 4112 Caneshaw          | 3206 Chappelwood       | 301 Hunters Lane        | 1143 Andover            | 2011 Plantain Lily Court |
| 6530 Clawson         | 16915 Creeklane        | 9113 Harbor Hills      | 3004 Briarsage Lane     | 5302 Balmorhea          | 14214 Autumn Ridge Tr    |
| 2722 South Belgravia | 16915 Creeklane        | 14638 Morningside View | 8711 Gentle Stone Court | 3631 Sunburst           | 3114 Jorns               |
| 1042 Sussex Trail    | 2423 Covington Way     | 9501 Summer Sun        | 1503 Red Bud            | 11309 Morning Brook     | 4115 Caneshaw            |
| 3002 Centennial Dr.  | 2462 Country Club      | 15611 Rose Ridge Ct    | 2474 Woodbury           | 3823 East Peach Hollow  | 5227 Kelling             |
| 3407 Parkside        | 4526 Brookren          | 9241 Lee Lane          | 3243 Southdown          | 3106 Birch Landing      | 14216 Stone Bluff        |
| 2423 Arrowsmith      | 11703 Shoal Landing    | 3235 Wuthering Heights | 2630 South Breeze       | 12401 Evening Bay Drive | 4419 Leyland             |
| 3527 Southdown       | 1051 Margate           | 3826 Vinecrest         | 4207 Seminole           | 3715 Forney Ridge       | 2304 Diamond Springs     |
| 8335 Autumn Wind Dr. | 1151 Andover           | 2614 South Brompton    | 3039 Fallbrook          | 2603 Garnet Court       | 5418 Flamingo            |
| 715 Redwood Bend     | 1618 Chippawa          | 3315 Harbrook          | 3518 Ewing              | 11404 Harris Avenue     | 10112 Forest Spring      |
| 4709 Crepe Myrtle    | 2715 Foxden            | 9902 Bronze Mill Lane  | 2715 West Oaks Circle   | 222 Kestrel             | 3507 Pickering           |
| 3303 Stanton Court   | 1030 Abbott            | 6306 West Oaks Circle  | 3126 Springdale         | 11571 South Kirkwood    | 407 Present              |
| 3538 Senova Drive    | 3239 Southdown         | 3015 Glencullen        | 2618 Pinebend           | 4111 South Webber       | 1415 Ruell Street        |
| 2206 Naomi Ave. #5   | 9606 Fair Brook Way    | 2474 Amberly           | 3139 Thomas Paine       | 3922 Valley Haven       | 8310 Wainwright Way      |
| 4135 North Nolan     | 15326 Silver Green     | 2751 CR 155            | 3618 Englewood          | 5535 Hummingbird        |                          |
| 3322 Waters Edge     | 910 Norfolk            | 1806 Elm Shadow        | 1015 Beckton            |                         |                          |

**Over 6300 Homes SOLD!**

**Your  
Home  
Here!**

**Sam SOLD It.com**



**Count on Pearland Sam's 34+ years  
of experience to Get Yours SOLD!!**

**Sam  
FERRERI**

**RE/MAX Top Realty**  
Each Office  
Independently Owned and Operated



PearlandSamTEAM.com

**832-200-5656**



**CERTIFIED DISTRESSED PROPERTY EXPERT**

Direct Impressions & More  
Marketing 713.545.1269