

THE Current

SHADOW CREEK RANCH

Volume 1 Issue 9

Official Publication of Shadow Creek Ranch

September 2009

Encouraging Community Togetherness

Septembers Message From your On-Site Manager Melanie Smith

COMMUNITY: An assemblage of interacting populations occupying a given area.

Joint possession, enjoyment.

Sharing, participation, and fellowship.

COMMUNE: to converse or talk together, usually with profound intensity, intimacy.

Welcome to our Back to School Issue. I hope all of you had a wonderful, healthy and fabulously fun summer. Maybe it will cool off soon? The lazy hazy days of summer have ended and I'm sure you are all busy planning schedules and getting everyone adjusted to the beginning of homework, projects and extra-curricular activities. Take advantage of the sports programs that are offered in your own **community**. Soccer, tennis etc. Volunteer in your **community** to keep these programs flourishing and help them grow.

Congratulations to the Shadow Creek Ranch Swim team on completing its first season. Under the direction of resident Ted Kalivoda, the Shadow Creek Ranch Swim Team swam its first lap this summer. Here is a quote from an email from Ted, "The reaction from the **community** has been tremendous. Note that we had 42 swimmers...we only had 24 soccer players the first season in 2007. Now we have over 200 kids playing soccer. Expect over 100 kids to sign up for swimming next year...even more if we can get the fee down to \$70 or \$80. The line expense hit us hard and we appreciate the developer/board help with that." Congratulations again Ted and the rest of the Swim Team Board as well as the children who participated.

TENNIS ANYONE? Resident Chris Morehouse has volunteered to begin the SCR Tennis Club. I'm sure most of you tennis players are aware of who he is. Look for his postings at the courts for events and activities he will be implementing in the **community**. In addition to the Tennis Social Club, Chris also started the first Junior Tennis Camp and Adult Drills in Shadow Creek Ranch. Chris is the Head

Pro for the only approved instructional tennis program designed exclusively for the Shadow Creek **community**. He is a certified member of the United States Professional Tennis Association as well as being a Certified Professional 1 tennis coach. This is the highest rating possible given by the USPTA. His assistant Richard Perreras is also a certified member of the USPTA and is a certified coach.

Chris has been working diligently with me to assist in making the reservation system not only more user friendly, but also more fair as we only have two courts serving the entire **community**. We will be changing the reservation rules in the near future so that all players will have the opportunity to utilize the courts. I welcome and request your feedback as we work to offer you more opportunities to exercise your love for the game.

TENNIS IN THE FALL – Look for upcoming after-school tennis classes for kids as well as the continuance of the adult drills facilitated by Chris and Richard and of course the brand new SCR Tennis Club events.

GET FIT AND HEALTHY!!! – Also in this edition see the article announcing the partnership between the brand new fitness facility Dynamic Fitness and Shadow Creek Ranch. How about a FREE six week weight loss and healthy living program offered exclusively to the residents of SCR. Speaking of fit and healthy, I am looking for someone to assist the new leader of the Shadow Creek Ranch Fit for Life Club. Please email the Oakwood Terrace Section Representative Katrina Barnes at Katrina.Barnes1@gmail.com. Katrina has graciously volunteered her time not only to represent her section, but to also develop the Fit for Life Club. Katrina is a certified fitness instructor. Devote a little time to assisting in organizing **community** power walks, fitness in the park, healthy eating seminars etc. etc. And the folks at Dynamic have offered to assist in getting this ball rolling! Interested? Please contact Katrina.

(Continued on Page 2)

SHADOW CREEK RANCH

IMPORTANT NUMBERS

EMERGENCY NUMBERS

EMERGENCY	911
Fire.....	911
Ambulance.....	911
Sheriff – Non-Emergency.....	281-331-9000

SCHOOLS

Mary Marek Elementary	281-245-3232
Laura Ingalls Wilder Elementary	281-245-3090
Manvel Junior High	281-331-1416
Alvin Senior High	281-331-8151
Manvel High School	281-245-2235
Alvin ISD Administration	281-338-1130
Alvin ISD Transportation	281-331-0960

UTILITIES

Electricity - Reliant Energy	713-207-7777
Gas - Center Point	713-659-2111
Trash Removal - City of Pearland	281-652-1600

OTHER NUMBERS

Pearland Post Office	281-485-2132
Poison Control.....	800-764-7661
Brazoria County Health Department	979-864-1484
Animal Control.....	281-756-2265

CITY

Pearland City Hall.....	281-652-1600
Pearland Utility Billing - Water Dept.	281-652-1603
Pearland Animal Control.....	281-652-1970
Pearland Police Dept - Non-Emergency	281-652-1100
Pearland Public Works.....	281-652-1900

NEWSLETTER

Editor	
Melanie Smith	msmith@amitx.com
Publisher	
Peel, Inc.	512-263-9181
Advertising	512-263-9181

MGMT COMPANY

ASSOCIATION MANAGEMENT, INC.

Community Manager	
Maria Southall-Shaw.....	713-931-1122
On-Site Manager	
Melanie Smith	713-436-4563
Assistant to On-Site Manager	
Kimberly Cartwright.....	713-436-4563
Service Specialist	
Carmen Sierra.....	713-984-7273

www.AMITX.com

Encouraging Community - (Continued from Cover Page)

ESL CLASSES - will begin this fall at the Emerald Bay Clubhouse for SCR residents only. Classes will run twice per week for ten weeks and will be facilitated by resident Dana Yesland, ACC Program Coordinator of Foreign Languages at Alvin Community College. More info to come.

SECTION REPRESENTATIVES – Still seeking leaders for each section to enhance the sense of **community**, assist with reporting issues or concerns to your On-Site Staff, act as a liaison between your neighbors and your Board, organize **community** events etc. So far these are the sections that have a representative. Please be sure to contact them immediately and give them your email address so they can add you to their distribution list. You don't want to miss out on any **community** news.

Crystal Lake –

Wanda Ferrelwanda.ferrel@sbcglobal.net

Pinecrest -

Troy GriggsbyTroygriggsby@yahoo.com

Rosewood Crossing -

Tracy FletcherTblanchardmoody@jw.com

Osprey Pointe -

Sue Roberts.....sueroberts123@gmail.com

Sunset Shores -

Matt Mickle.....Mmickle@yahoo.com

Oakwood Terrace -

Katrina BarnesKatrina.barnes1@gmail.com

Reflection Pointe -

John Roberston.....jkrob75074@yahoo.com

Brookglen -

Geoffrey Popebrookglenrep1@yahoo.com

Silverleaf Glen -

Elizabeth ChristensenSilverleafglen@gmail.com

The Strand -

Chris MorehouseCmorehouse12@yahoo.com

Nicole Terrace -

Angelicque Guzman.....angelicque@guzmanexpress.com

If your section is not listed, that is because we do not yet have a volunteer.

(Continued on Page 3)



dogS gone good
expert help for you and your dog

**Dog Obedience Class
Dog Boarding School
Private Training**

Tricia Fagan
Certified Professional
Dog Trainer

(713) 557-1949
trainer@dogSgonegood.com
www.dogSgonegood.com

SHADOW CREEK RANCH

Encouraging Community - (Continued from Page 2)

LAWN CARE – We cover this each month. The appearance of your lawn is a key aspect in maintaining the beauty, appeal and value of your **community**. We understand that it has been an unusually hot and dry summer however that does not excuse anyone from withholding water from their lawn. Many homeowners have received letters from us because their lawns are brown and dying. You must take immediate action to remedy this situation. Water early in the morning or late in the evening. Throw some seeds down to restore what needs to be restored. Mow your lawn and make sure it is edged. You can avoid financial penalties and fees simply by doing the following:

**MOW AND EDGE WEEKLY – TRIM YOUR BUSHES –
KEEP YOUR SHRUB BEDS AND LAWN FREE OF WEEDS**

Signing Off and hoping you all enjoyed your summer. Wishing all of your children a very successful 2009-2010 academic year. Remember, be kind to your neighbor. Sometimes we are in situations that make it difficult to get out and tend to our lawns. Perhaps you have a neighbor that is not caring for their lawn. Be neighborly – see if there is something you can do to assist them. Every community has residents who may have financial or health issues that prevent them from pulling up the weeds, paying a landscaper every week etc.

There is nothing wrong with reverting back to the “Little House” days when a neighbor was a friend. You never know when one simple act of kindness will make a huge difference. Open your door, say hello, strike up a conversation. You may be pleasantly surprised!

Remember the meaning of **community** - Sharing, participation, and fellowship.

*Take Care
Melanie Smith*

Business Classifieds

DOG AND CAT VACCINATION AND HEALTH CLINIC:

Rabies vaccination \$9.95. All other vaccinations and medicine at reduced rates. www.themobilevetclinic.com. 936-447-5033. Date: September 18th (Friday) - Time: 4:00 until 7:00 - Location: 11814 North Clear Lake Loop, Village of Emerald Bay Rec. Center.

Classified Ads

Business classifieds (offering a service or product line for profit) are \$50, limit 40 words, please contact Peel, Inc. Sales Office at 512-263-9181 or advertising@PEELinc.com.

When You're Ready to Sell Call The Experts at the Front Door of YOUR Community!



Cathy Spacek

832-643-7768

cathy@cathyspacek.com

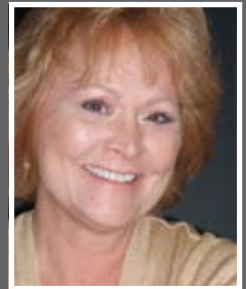
Top Producer &
Resale Specialist

★ ★ *Platinum
2005 2006 Producer*

The Original Shadow Creek Ranch Realtors
Specializing in Your Community

Maximum Exposure of Your Listing
*Located in the SCR Visitors Center, and Welcoming
More Walkin Buyers Than Any Other
Real Estate Company*

**Even More Exposure with Our Exclusive
Live Online Chat**
*Reaching Out to Buyers Worldwide...
24 Hours a Day, 7 Days a Week*



Ricki Stockwell

713-306-3773

redrock811@aol.com

SCR Top Producer

*Platinum
Producer* ★ ★ ★
2004 2005 2006
★ ★ ★
2007 2008 2009

SHADOW CREEK RANCH

Shadow Creek Ranch Launches New Web Site



As many of you have already discovered, Shadow Creek Ranch launched its new web site this year at www.shadowcreekranch.net. This state-of-the-art web site utilizes all of the latest technologies to present the community to home shoppers. As homeowners in Shadow Creek Ranch there are many features of interest to you as well.

As you might have seen on the Shadow Creek billboards this is a web site that talks back. At shadowcreekranch.net, you don't just click, you chat. Have a question? Start a live chat with one of our home-buying experts. Back and forth, you ask and we answer. The agents at the Shadow Creek Ranch Visitor Center staff our chat line and can answer many questions about Shadow Creek Ranch. Or they can direct you to the HOA for questions they can't answer.

Plus, our web site has a host of interactive features, where you can explore all the extras of Shadow Creek Ranch for yourself – and see why it's one of Houston's most successful communities. Our "concierge" greets you at each main section to tell you what you'll find out about Shadow Creek in regards to Community, Recreation, Location and Homes. Our interactive site plan, photo galleries, virtual tour and video present the natural beauty

(Continued on Page 5)

Back to School ESSENTIALS



- 10 million school children suffer from undiagnosed vision problems that can result in learning problems.
- 80% of what a child learns in school is presented visually.

**Call Our Office and Schedule An Eye Exam
for Your Child and Yourself**

Vision Source!

Family Eye Care

Dipak R. Kalani, O.D.

713/436-7544

11601 Shadow Creek Pkwy

Suite 113

Pearland, Texas 77584

www.visionsource-shadowcreek.com



**COMPLETE PAIR
of GLASSES**

**50%
OFF**

Save 50% on your second complete pair of eyeglasses (frames and lenses) when you purchase a complete pair of glasses. Must present this coupon at the time of order. May not be combined with any other offer or insurance plan. See associate for details.

**EXAM GLASSES
& CONTACTS**

\$199

Offer includes exam, 6 pair clear, spherical disposable contact lenses and one pair of clear, single vision CR-39 lenses with frames from our special collection. Must present this coupon at the time of order. May not be combined with any other offer or insurance plan. See associate for details.

Comprehensive Eye Health Exams • Lasik & Cataract Surgery Consultation

SHADOW CREEK RANCH

SCR Launches New Web Site - (Continued from Page 4)

of our lakes and trails, our recreation centers with water parks and sports facilities and our nearby shopping, such as Pearland Town Center with Macy's, Dillard's and more. There is even an Interactive Area Map with nearby areas of interest.

Interested in buying land or leasing space? Or just interested in what is going on with commercial and retail development in Shadow Creek Ranch? Then check out the Commercial Opportunities section of the web site with the Interactive Commercial Map.

Are you planning to move to a bigger home in Shadow Creek? Or do you have a friend or family member interested in buying a home? Visit our Homes section for information on our builders and their offerings as well as our Inventory page with a search feature that helps you find homes under construction that fit your criteria. Plus you can even click to view exactly where each inventory home is located.

If English isn't your first language, don't worry! There is a Spanish language version of the web site with all the audio and text and image text all translated to Spanish. Or if you prefer a different language there is a Google Translate gadget on the home page that allows you to choose from over 30 other languages from all over the world.

Help us get the word out about our new web site. Spread the word to your friends, family and colleagues. Invite them to visit shadowcreekranch.net where you get straight answers, straight away.



M & R
Custom Woodworking
Custom Cabinets • Fine Mill Work
Interior Woodworking

Michael Jager

3705 Halik #1 • Pearland, TX 77581
P: (713) 299-6793 • F: (281) 992-1067



LeBlanc
Insurance Agency

OBJECTIVE: Personal Service

11711 Shadow Creek Pkwy, #145
WELCOME!
713.436.4707
www.LeBlancInsuranceAgency.com

FARMERS Personal & Business Insurance



No Matter the Event, Graduation, Wedding, Shower, etc. We Can Help.

Housework won't kill you, but why risk it. Let our gloves do your dirty work!

1st Quality Service
Competitive Rates

Call about our special rates for:

Up To 3 Bedrooms
+ 2 1/2 Baths,
Kitchen, Living Room
& Dining Room.*
\$9 Each Additional Room
(Reg. \$10)

* Rate based on bi-weekly service after initial cleaning for homes less than 3000 sq. ft.
Restrictions apply. Call for details.

- ✓ Weekly, Bi-Weekly, Monthly and One-Time Services
- ✓ Detail Services
- ✓ Move In/Outs
- ✓ Homes and Offices
- ✓ Fully Trained Staff
- ✓ Bonded and Insured
- ✓ All Equipment and Supplies Provided

\$25 Off
Our Detail Service
With Coupon Only. Expires 8/31/09.

***FREE**
Refrigerator or Oven Cleaning
When Setting Up Bi-Weekly or Weekly Regular Service (\$20.00 Value)
*\$50 off your service for referral Unlimited!
With Coupon Only. Expires 8/31/09.

www.whitegloveskleansvcs.com
Not affiliated with any other White Gloves Cleaning.

✧ White Gloves Kleaning Services ✧

Call **281-99-SLIME** for a Free Phone Estimate!
(281) 997-5463



Bashans Painting & Home Repair
Commercial/Residential
Free Estimates

281-347-6702
281-731-3383 cell

MasterCard VISA DISCOVER

- Interior & Exterior Painting
- Hardi Plank Installation
- Wood Replacement
- Sheetrock Repair
- Interior Carpentry
- Cabinet Painting
- Wallpaper Removal and Texturizing
- Pressure Washing
- Fence Repair/Replacement
- Garage Floor Epoxy
- Custom Staining
- Roofing
- Gutter Repair/Replacement
- Faux Painting

References Available • Fully Insured
NO PAYMENT UNTIL COMPLETION
bashanspainting@earthlink.net

SHADOW CREEK RANCH

30 Days of Helping

Local private pre-school, Bright Learners Academy, is spearheading a drive to raise funds for the Shriners Hospitals for Children.

Bright Learners Academy has initiated the "30 Days of Helping" fundraising campaign. In an effort to teach children the importance of giving to those less fortunate than they, BLA's students are beginning a campaign where they do chores to help their families, neighbors, and community, and raise donations for the benefit of the Shriners Hospitals for Children. Bright Learners Academy has brought not only their students, but the students from Alvin ISD's Laura Ingalls Wilder Elementary, Mary Marek Elementary, and Nolan Ryan Junior High schools into the campaign. The hope is that the students will learn the feeling of satisfaction derived from helping others.

Shriners Hospitals for Children is a one-of-a-kind international health care system dedicated to improving the lives of children by providing specialty pediatric care, innovative research and outstanding teaching programs. Children up to

the age of 18 with orthopedic conditions, burns, spinal cord injuries and cleft lip and palate are eligible for admission and receive all care in a family-centered environment at no financial obligation to patients or families.

Due to the downturn of the economy, donations to this wonderful organization have slowed although the need for their services has not. BLA wants their students to learn the importance of helping others, as well as how it feels to work to the benefit of others and begin a lifelong habit of giving of one's self. "30 Days of Helping" will walk students through this introduction, and start our students down the road to being contributing community members.

The program will wrap up with a concert at the end of the campaign featuring the Disney Dance Crew at the Nolan Ryan Junior High School Gymnasium for the volunteers. Tickets may be earned through chores performed and may also be purchased at a cost of \$25.00 to benefit Shriners Hospital.

Advertising Information

Please support the businesses that advertise in Shadow Creek Ranch Newsletter. If you would like to support the newsletter by advertising, please contact our sales office at 512-263-9181 or advertising@PEELinc.com. The advertising deadline is the 10th of each month for the following issue.

Don't Want to Wait for the Mail?

Sign up to receive The Current in your inbox. Visit PEELinc.com for details.



Picked-up or Delivered
Open to the public

www.livingearth.net

We offer a wide selection of materials including Soils, Mulches, Sand, Gravel and Natural Stone!

SUMMER IS FOR MULCHING!

Did you know? Mulching conserves water and even lowers temperatures!

LOOK FOR US IN YOUR NEIGHBORHOOD!

**Iowa Colony • 16138 Highway 6, Iowa Colony, TX. 77583
(281) 431-3400**

Now open on Hwy 6 - 1.3 miles west of 288

Monday-Friday 7:30 AM - 5 PM, Saturday 7:30 AM - 12 PM, Closed Sunday

LIVING EARTH™ – Houston Area Locations:

Crawford Road
(713) 466-7360

Missouri City
(281) 499-5641

League City/Dickinson
(281) 337-7800

Katy Freeway
(281) 579-1472

Cutten Road
(281) 537-2377

Richmond
(281) 342-6113

Kingwood/New Caney
(281) 689-6083

Woodlands
(936) 321-4001

Bring in your newsletter to any Houston location and pick up **2 bags** of Living Earth Houston Mulch

FREE

Just for visiting!



SHADOW CREEK RANCH



SCR Tennis Club

Men's League

Submitted by Chris Morehouse

The SCR Tennis Club Men's League is sad to announce the passing of **Robert Arandia**. A gifted player, Robert represented his native Philippines' in international play as a member of the Davis Cup team. His life and contribution to tennis here in Shadow Creek Ranch will be celebrated by a men's doubles tournament Sunday Aug 23. A suggested \$10 donation per player will be applied towards balls, trophies, a bar-b-que lunch and a remembrance for family members planning to attend.

Go Green Day

Saturday September 26, 2009 from 9 a.m. to 2 p.m. at the Emerald Bay Recreation Center, 11814 North Clear Lake Loop.

Keep Pearland Beautiful will be distributing recycling bins for the citizens of Shadow Creek Ranch. KPB has made arrangements with Waste Management to have curbside recycling bins available at the center for that day only for any residents who are unable to pick up a bin at City Hall during regular business hours. Residents will be required to show a city of Pearland water bill and are limited to one bin per family. The bins are intended for citizens that have never received a bin; residents may purchase a second or "overflow" bin for \$8. In addition, Keep Pearland Beautiful staff and volunteers will be on hand with information about recycling, events and programs offered by the City of Pearland. For more information call KPB at 281-652-1659 or email cowles@keeppearlandbeautiful.org.



Emergency Room Open 24 Hours

Ready or not... we are.

Texas Emergency Care Center is open **24 hours a day**.

We're committed to delivering comprehensive medical services in a comfortable environment with little to no wait time – day or night.

You'll experience:

- A full-service facility equipped with a complete laboratory, radiology, CT scanning and cardiac monitoring.
- Prompt, friendly and caring service.
- Quality face time with a physician who is Board Certified in Emergency Medicine.

After all, emergencies just can't wait.

281-648-9113

All private insurance accepted.



T E X A S
EMERGENCY CARE
C E N T E R A T P E A R L A N D

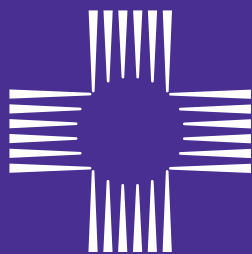


FM 518 at Dixie Farm Road
3115 Dixie Farm Road, Suite 107

www.txercare.com

Accredited by the Joint Commission of
Accreditation of Healthcare Organizations
for our commitment to excellence.





ST. LUKE'S®

Community
Emergency Center
Pearland

NOW OPEN

11713 Shadow Creek Pkwy. (at Kirby)
Pearland, TX 77584

713-793-4600

www.stluketexas.com/cec

Emergency Care
in your neighborhood...**24/7/365**

SHADOW CREEK RANCH

Community Sections

Reflection Pointe

Greetings to Everyone:

My name is John Robertson, I am happy to announce that I am the new Section Representative for the Reflection Point Community. I have a wonderful wife (Pamela) and daughter (Jordyn). Perhaps you've seen me and my daughter we are always walking along the various lakes throughout Shadow Creek Ranch.

Additionally, I would like to congratulate Mr. and Mrs. Brad Dunn on being newlyweds and to officially welcome his new wife Megan to the Reflection Point Community. We would also like to welcome two of our newest little neighbors to the Reflection Point Community: Audrie Hinton daughter of Leslie and Wes Hinton and Cooper Young son of Nathan and Cherie Young.

I look forward to meeting all of the neighbors in particular at National Meet Your Neighbor Night Out on Tuesday October 6, 2009. At that time I will personally introduce myself and share any issues or events that affect the Reflection Point Community. Should you have any questions or concerns before then I can be reached via e-mail at jkrob75074@yahoo.com.

Rosewood Crossing

Hello Neighbors,

My name is Tracy Blanchard-Moody and I'm a resident of Rosewood Crossing. My husband, daughter and soon to be baby boy, moved here in 2007 and we absolutely love it! After speaking with Melanie Smith, I agreed to become the Section Rep for Rosewood Crossing.....in my opinion one of the best sections in Shadow Creek Ranch.

It's Back To School already!!!! In just a few short weeks, our children will be heading back to school. No matter what grade your child is entering, we all deal with the same issues: making sure their up on time, making breakfast, driving to bus stops etc. Let's prepare now to make our child's/children's first week of school a success. Lots of hugs, patience and smiles will make their day better than we think.

I will send information over the next couple of months regarding a fall garage sale!! Please send me any information that you'd like included in our upcoming Newsletter. Also, please feel free to email me any suggestions, complaints etc. that you may have and I will make sure our HOA is notified. I look forward to meeting you all. My email address is tblanchardmoody@jw.com.

Silverleaf Glen

Hello Neighbors'!

I know a lot of you already, but am looking forward to meeting more of you as I will be the new Section Leader for Silver Leaf Glen. My job is to keep up communications between our neighborhood and the HOA and act as a liaison to continue making this section a great place to live.

Unfortunately, I am unaware of any new arrivals or celebrations in the neighborhood of late. Although I am aware of a few break ins in the section. A neighbor's house was broken into and I had my GPS stolen out of my vehicle in June, which was parked in the driveway. They didn't take any CD's which puzzled me, but then my husband reminded me that no one listens to CD's anymore! So, a reminder to make sure you think safe and keep things locked up.

I have set up an email account just for our section, silverleafglen@gmail.com, so we can easily keep in touch with one another and you can contact me with announcements, news, questions or concerns. I will be doing my best to put together a names and numbers list for the neighborhood. Look forward to meeting you all, Elizabeth

(Continued on Page 10)



SHADOW CREEK RANCH

The Current is the official publication of the Shadow Creek Ranch Maintenance Association. At no time will any source be allowed to use The Current's contents, or loan said contents, to others in anyway, shape or form, nor in any media, website, print, film, e-mail, electrostatic copy, fax, or etc. for the purpose of solicitation, commercial use, or any use for profit, political campaigns, or other self amplification, under penalty of law without written or expressed permission from the Shadow Creek Ranch Maintenance Association and Peel, Inc. The information in the newsletter is exclusively for the private use of Shadow Creek Ranch and Peel, Inc.

DISCLAIMER: Articles and ads in this newsletter express the opinions of their authors and do not necessarily reflect the opinions of Peel, Inc. or its employees. Peel, Inc. is not responsible for the accuracy of any facts stated in articles submitted by others. The publisher also assumes no responsibility for the advertising content with this publication. All warranties and representations made in the advertising content are solely that of the advertiser and any such claims regarding its content should be taken up with the advertiser.

* The publisher assumes no liability with regard to its advertisers for misprints or failure to place advertising in this publication except for the actual cost of such advertising.

* Although every effort is taken to avoid mistakes and/or misprints, the publisher assumes no responsibility for any errors of information or typographical mistakes, except as limited to the cost of advertising as stated above or in the case of misinformation, a printed retraction/correction.

* Under no circumstances shall the publisher be held liable for incidental or consequential damages, inconvenience, loss of business or services, or any other liabilities from failure to publish, or from failure to publish in a timely manner, except as limited to liabilities stated above.

*Your Home begins
with a
Dream*
Let us handle building it for you...



Whether it be Remodeling, Repairing,
Rebuilding, or new Construction,
we will be there when
you need us...

Houston's most trusted Builder



Experience. Ethics. Excellence.
Fully Licensed - Fully Insured
281-898-6469
www.FiniteConstruction.com

Community Sections - (Continued from Page 9)

The Strand

Hi folks,

My name is Chris Morehouse and I'm a new Sectional Representative for an Emerald Bay neighborhood. With my wife, Diana and various four legged friends, I'm the senior (5+ years) resident of "The Strand".

I grew up in a time when neighbors knew one another well. These are different times, but I still think it would be nice to know each other some.

The national meet you neighbor planned for Oct. 6 might be a good time to say hello to some nice people. Expect to be pleasantly surprised.

Meanwhile, please send me your email addresses to go with your mailing address and some family info so I can develop a data base of my community. I've been assured that's a more effective information transferring medium than "The Pony Express". We'll see!

Stay cool, end of summer in sight. Got electricity bills!?!?

Chris M

PS- I have wonderful rescue cats that need homes. Anyone know anyone looking? Please check with your neighbors. That's what they're for.

Osprey Pointe

Greetings Osprey Neighbors!

Save the date for National Night Out on October 6th. As we have done in the past, we will gather at the end of Shore Creek Drive, block off the cul-de-sac and let the kids run wild! Hopefully we can arrange another visit from area law enforcement and the Pearland fire department--I know everyone enjoyed checking out their vehicles last year. Watch for e-mails next month with more information.

Big news in our section includes a new school and a new baby! Let's all congratulate Lori and Tom Ferazzi on the opening of The Horizon School. The Horizon School is an academic-based school for students with Down syndrome and similar developmental delays located in Friendswood. See the school website for more information: www.thehorizonschooltx.com.

Also, earlier this summer Chad and Melody Briggs welcomed a new baby girl, Kenzie, to join proud siblings Hailey, Hunter, and Cutter. As the Osprey Pointe section representative, please let me know about exciting news we can share, including births, weddings, new neighbors, etc. You can reach me at sueroberts123@gmail.com.

Sue Roberts

(Continued on Page 11)

Do You Have Reason to Celebrate?

We want to hear from you! Email msmith@amitx.com to let the community know!

SHADOW CREEK RANCH

Community Sections - (Continued from Page 10)

Oakwood Terrace

Hello Neighbors,

My name is Katrina Barnes and I am excited to announce that I will be *Oakwood Terrace New Section Representative for Shadow Creek Ranch!*

A little about me:

I am a Licensed Texas Real Estate Broker/REALTOR®. I am the Broker/Owner of Barnes Realty and Associates. I have two wonderful children by the name of Cameron (son), and Victoria (daughter). I have a wonderful husband by the name of Victor Barnes. I am honored to take on the privilege of being your Representative and voice for our section. With my extensive background and knowledge in real estate, I feel that I can truly be an asset to you all in the community. We will host a Meet & Greet for all of our neighbors in Oakwood Terrace on September 17, 2009.

Place: Village of Emerald Bay Club House

Time: 7pm-9pm

There we will be able to have an open house to meet our neighbors and discuss at few topics. Two of the topics on our agenda will be, coordinating the Pearland, Texas- National Out Night and Yard of the Month. It is my hope that we will be able to get most of our neighbors out to the Meet & Greet. We will have a Pot Luck! Please bring your favorite dessert or dish. Please email your names and contact information to: katrina.barnes1@gmail.com or call me at 281-658-5022. I am also looking for an Assistant Section Representative, so please contact me if you are interested.

Regards,

Katrina Barnes.

Pinecrest


Hello SCR Residents.

My name is Troy Griggsby and I'm the section representative for Pinecrest. Although I have met quite a few Pinecrest residents, I'd like to meet as many of you as possible to help enhance our community and foster communication amongst ourselves and with our HOA. My wife, Joy, and I have two wonderful kids, Aidan and Lily, and we've been residents here since October 2005.

This year, Texas will celebrate National Night Out on October 6. This is a perfect time to come outside, stroll through the neighborhood and get acquainted with each other. I look forward to meeting you then!

In the meantime, please contact me at troygriggsby@yahoo.com as I hope to begin building a distribution list for Pinecrest-related information, announcements and other community events that may be of interest.

(Continued on Page 12)



Spark Power Bank

We Challenge What You Pay For Electricity

SIGN-UP ONLINE TODAY!
WWW.SPARKPOWERBANK.COM

Please choose "Newsletter Ad" as your referral

I'm Texas Energy Analyst Alan Lammey. Maybe you've heard me on the radio talking about the market forces that drive energy prices. I'm here to tell you that you're not stuck paying those high prices to big electric companies anymore!

Why pay more than you have to?

SHADOW CREEK RANCH

BLACK IRON FENCES ARE
THE RESPONSIBILITY
OF THE HOMEOWNER
TO MAINTAIN. PLEASE
CONTACT OUR OFFICE FOR
DETAILS.

CURB PAINTING REQUIRES
AN ARCHITECTURAL
APPLICATION AND
SAMPLE.



Street Lights Out?

REPORT THE 6 DIGITS
ON THE POLE TO
WWW.CENTERPOINT.COM

Community Sections - (Continued from Page 11)

Brookglen

Greetings to Everyone:

My name is Geoffrey Pope and I'm happy to announce that I am the Section Representative for the Brookglen Community.

As this is a new position with its function description somewhat flexible, I'm looking for some guidance on how you expect me to proceed. Initial thoughts are as follows-

- Explore having Monthly/bi-monthly meetings so we can visit and better know our neighbors; discuss local issues of general concern, etc.
- Meetings can be educational opportunities e.g. visits from the local fire department to give advice on fire safety; the local police force to advise on home/personal safety issues; city council members for updates on what is happening at this end of Pearland, etc.
- Clearing house for passing along general concerns/news to the HOA.
- Personal announcements to inform neighbors of events in their lives that they want to share.

I look forward to meeting and hearing all of you in particular at the National Meet Your Neighbor Night Out on Tuesday October 6, 2009. At that time I will personally introduce myself and share any issues or events that affect the Brookglen Community.

Meanwhile, should you have any questions or concerns before then I can be reached via e-mail at brookglenrep1@yahoo.com or just send me your email address with street address so I can start keeping you informed on what is happening locally.

Regards,

Geoffrey Pope

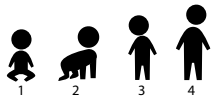


COLIN'S HOPE

Increasing water safety awareness and standards

FACTS YOU NEED TO KNOW ABOUT DROWNING

Drowning is the leading cause of unintentional injury-related death in children ages 1-4



DROWNING WILL AFFECT YOU OR SOMEONE YOU KNOW



Drowning is the 2nd leading cause of unintentional injury-related death ages 1-14.

For more information,
check out our website at

www.colinshope.org

DROWNING CAN STILL OCCUR EVEN IF YOU KNOW HOW TO SWIM

NO ONE is "drown proof" – no matter their level of swimming ability.

Falls, entrapments, and injuries lead to drowning regardless of swimming level.

A majority of people overestimate their own and their child's ability to swim, especially in a panic event.

DROWNING IS QUICK AND SILENT



Drowning occurs in as little as 2 minutes.



Irreversible brain damage occurs in as little as 4 minutes.



Most children are out of sight or missing for less than 5 minutes and usually in the presence of 1 or both parents.



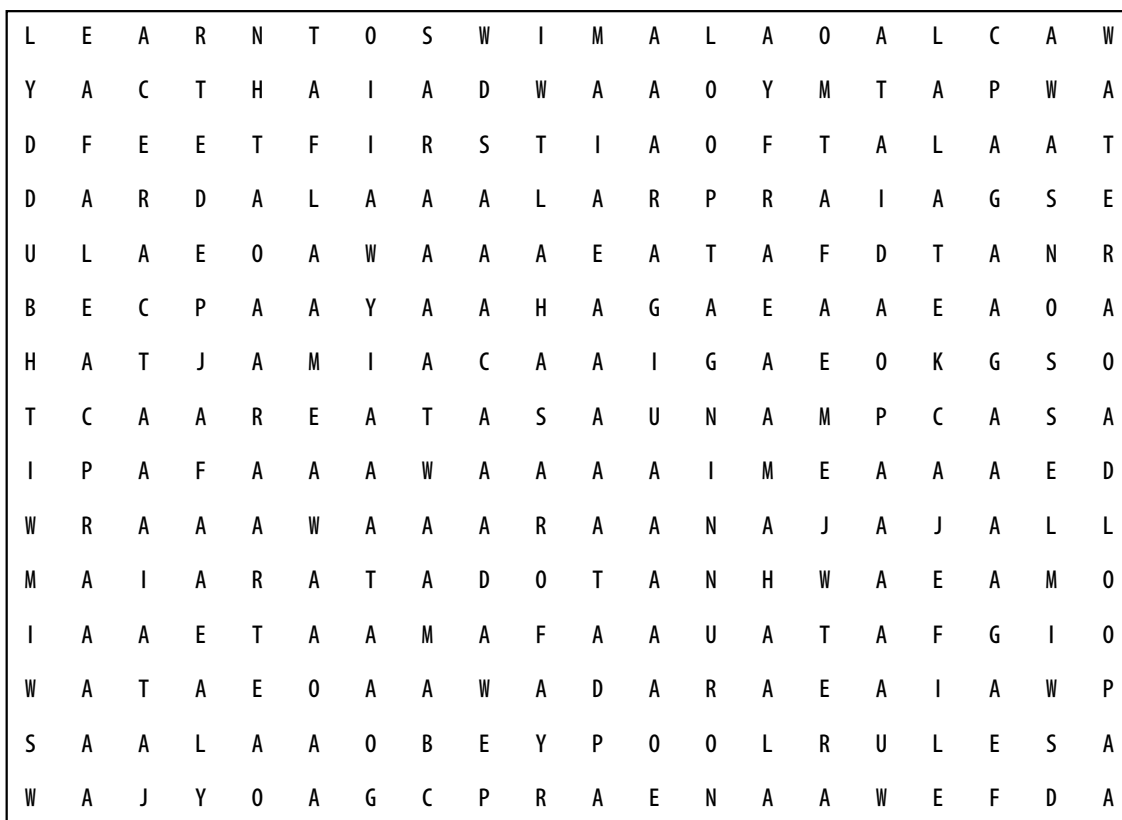
Most children die who are submerged for as little as 6-10 minutes.

Children who drown do not **scream, splash, or struggle**. They silently slip beneath the water, even with adults & lifeguards present.



Increasing water safety awareness and standards

Water Safety Word Find



Find and circle all of the words that are hidden in the grid.

The words may be hidden in any direction.



POOL
LIFE JACKET
LIFEGUARD
LEARN TO SWIM
NO RUNNING AT POOL

SWIM LESSONS
FEET FIRST
SWIM WITH BUDDY
OBEY POOL RULES
WATER WATCHER



For more information check out our website at:

www.colinshope.org

Colin's Hope is an all-volunteer 501(c)(3) nonprofit organization that creates and supports programs that aid in preventing children from drowning. Despite numerous sources for water safety, the number of children who drown per year is staggering. Colin's Hope of saving children from drowning is being achieved through increased water safety awareness and improved standards throughout the community.

SHADOW CREEK RANCH

Alvin ISD at a Glance ...

ACADEMIC PERFORMANCE

Alvin ISD is an accredited district with a Recognized rating from the Texas Education Agency. Nine of the schools are rated Exemplary and ten are rated Recognized.

GROWTH

Since 1999 the district has experienced a 33% growth in student population. Over the last five years, property values have increased from a little over \$1 billion to almost \$5 billion.

DISTRICT SIZE

Alvin ISD covers 250 square miles in Brazoria County and serves the communities of Alvin, Manvel, Iowa Colony, Liverpool, Amsterdam, and parts of Rosharon, Arcola, and Pearland.



STUDENT ENROLLMENT

Approximately 16,000 students make Alvin ISD the second largest school district in Brazoria County.

FINANCES

The budget for 2009-2010 is \$126,314,682.

TAX RATE

The proposed 2009 tax rate is \$1.304 per \$100 assessed market value, which is 2.4 cents less than the 2008 rate of \$1.328.

CAMPUSES

The district has two high schools, one academic alternative campus, five junior high schools and thirteen elementary schools. Four of the campuses are located west of the Highway 288 corridor in the Pearland ETJ. A future school site is located on FM 518 west of the Pearland Town Center.

EMPLOYEES

Alvin ISD employs approximately 2,000 people dedicated to the district's educational mission. Over half of these employees work directly with students on a daily basis. About 20% of the districts' teachers hold advanced degrees.

TEACHER SALARIES

A beginning teacher with a bachelor's degree earns \$45,000 and a beginning teacher with a master's degree earns \$46,000. Alvin ISD provides a comprehensive benefits package, part of which is paid by the district.

ETHNIC COMPOSITION

The district's ethnic composition is 40% White, 41% Hispanic, 12% African American, 6% Asian or Pacific Islander, and 1% other.

Mortgage rates are very LOW!

Tax incentives are very HIGH!

Are you READY to buy?

SET to sell?

GO! Call Me!

Together, we can win!

A photograph of Vince Kearney, a man in a suit, smiling. He is holding a large house-shaped sign that says 'Your Home Coach VINCE KEARNEY'. To his right is a RE/MAX logo. Below the sign is the website 'PearlandHomeCoach.com'.

Your Home Coach
832-428-6207
RE/MAX Top Realty

Your Home Coach
VINCE KEARNEY
PearlandHomeCoach.com



CERTIFIED DISTRESSED PROPERTY EXPERT®

As a CDPE® and Realtor®

**I have specialized training & expertise
in SHORT SALES and
PREVENTING FORECLOSURES.**

**If you are a homeowner in
FINANCIAL DISTRESS and may face
a foreclosure, you do have options.**

**If you act quickly,
I may be able to help.**

**Call me TODAY
for a confidential consultation.**

832-428-6207

**For more information, visit my website:
PearlandHomeCoach.com/foreclosures.asp**

Alvin ISD Schools Recognized AGAIN !

Alvin ISD has reason to celebrate as the district has again received a Recognized rating for academic performance from the Texas Education Agency. All of the schools located in Shadow Creek Ranch received the higher ratings including an Exemplary rating for Mary Marek Elementary, a Recognized rating for Laura Ingalls Wilder Elementary and the first ever Recognized rating for Nolan Ryan Jr. High. Manvel High School also received a Recognized rating.

Deborah Roberson, principal of Nolan Ryan Jr. High said, "I am proud of the students and staff at Nolan Ryan Junior High School! We are pleased to be a Recognized campus and want the community to know we appreciate their support of the academic and extra-curricular activities of all our students. It was a busy year for students and staff as we opened the school in August, survived a hurricane in September, and continued our quest for excellence as the year progressed. And yes, having one of our students compete in the National Spelling Bee in May was exciting! We're looking forward to another great year of success!"

Dr. Robby McGowen, superintendent of schools said, "Our students, our teachers, our staff and our parents have worked very hard to make Alvin ISD one of the most successful school districts in Brazoria County. I am extremely proud of the results of their hard work and look forward to this school year being equally as successful. As we celebrate our success, we're also raising our expectations for our schools and our students, and continuing our commitment to prepare every student to be college or career ready when they graduate."

Marek students and staff are proud of their Exemplary rating because 90 percent or better of the all of the students passed in all TAKS subjects. The Recognized schools, Wilder Elementary, Nolan Ryan Jr. High and Manvel High School, all met the performance standard of 75 percent or higher on TAKS tests for each subject and student group.



Money Market

Rate guaranteed for 3 Months!

1.75%

APY*

Only \$10,000 required to earn this great rate!

We'll treat you like family!

*The Annual Percentage Yield (APY) of 1.75% on the Performance Money Market account with balances of \$10,000 and above (0.25% APY on balances from \$2,500 to \$9,999.99 and 0.15% APY on balances less than \$2,500.00) is available to retail customers who bring in at least \$10,000 in funds currently not on deposit at First Bank and have an active First Bank checking account. The promotional 1.75% APY is guaranteed for 3 months following the qualifying deposit. After that, the APY is variable. Rate accurate as of July 10, 2009. Fees may reduce earnings. Offer subject to change without notice. Minimum \$100 to open.

LIQUIDITY. FLEXIBILITY. GREAT RATE.

- ✓ FDIC Insured
- ✓ Right in your backyard
- ✓ A relationship you can count on
- ✓ Family-owned, privately held

Shadow Creek Ranch
11451 Broadway St.
Broadway (Hwy. 518) at Kirby
713-340-0652



Member FDIC

firstbanks.com

SHADOW CREEK RANCH

School Zones

School is back in session and Shadow Creek has 3 schools that are in our area that have kids walking home. The school zones are there to protect our kids from unnecessary accidents due to people not following the speed limit. The school zones times for the morning is 7:15am - 8:15 am and in the afternoon it is 2:45pm until 3:45pm during this time in these zones the speed limit is 20 mph. Use caution when kids are in cross walks we have had kids hit in the cross walks by poor judgement by the drivers. Just because some area's have crossing guards does not mean to rely on the guard to know right from wrong. Us good judgement and our kids will arrive home with out being hit by a speeding car or a driver with poor judgement.

You can contact Lt. J Caballero 281-652-1132 to let him know of any issues regarding the school zones



Construction Update

Thanks to brisk construction activity and even with a delay due to Hurricane Ike, the last of the 2003 and 2005 bond program projects are soon to be completed. Over the last five years, six new schools and facilities have been completed, including Manvel High School, Laura Ingalls Wilder Elementary, Savannah Lakes Elementary, Fairview Junior High, Nolan Ryan Junior High, and the Safety and Technology Center.

In addition, the Charles E. McCauley Building and other improvements including new walkways, walkway covers, emergency access, and drainage improvements have been completed at Alvin High School. Renovations were also done that preserve, upgrade, and update Alvin ISD Memorial Stadium and Marguerite Edwards Auditorium.

Projects at all of the schools, including parking lot improvements, HVAC upgrades, classroom and restroom additions, safety improvements, and more have been completed and functioning.

Phase II at Manvel High School completes the original master plan for the school and includes additions to increase the student capacity to 2,500 with an additional 58 classrooms and an auditorium. Also included is a beautiful state-of-the-art auditorium that seats 900 people.

Over a six year period of time, these projects, provided through successful bond elections approved by the voters, have added over 6,100 new classroom seats to the district's capacity to meet the needs of a continually growing student population.

Advertise YOUR business to YOUR neighbors for less than 4¢ per home.

Effective Advertising, Done Right.

Call today to Reserve your space.

Peel, Inc.
COMMUNITY NEWSLETTERS

1-888-687-6444

www.PEELinc.com

SCR

SHADOW CREEK RANCH

Message from Dr. Robby McGowen,

In my message to you last year, I asked you to join our Alvin ISD Board of Trustees and staff members in making the 2008-2009 school year the best ever for the children, parents and educators of our district. I'm proud to tell you that you were successful! As we ready ourselves for a new school year, we are also celebrating the great accomplishments of the previous year.

Alvin ISD will once again receive **Recognized** status from the state for the academic performance of our students. Furthermore, we have doubled the number of **Exemplary** campuses in our district and have earned Recognized or Exemplary ratings for campuses at the elementary, junior high and high school levels. It is obvious that our students, teachers, staff and parents have worked very hard to make Alvin ISD one of the most successful school districts in Brazoria County and in the Greater Houston Area.

As we celebrate past accomplishments, we are also raising our expectations for our schools and students. We have made a commitment to preparing every child for success after high school. Alvin ISD students will be college and career ready when they walk across the stage and receive diplomas from Alvin High School, Manvel High School and ASSETS Academy.

Along with academic excellence, we also strive for student success in areas that help develop the whole child. The past year saw many Alvin ISD students involved in state athletic playoffs, spelling bee championships, artistic recognition and community service. We will continue to measure success in Alvin ISD academically, athletically, artistically and developmentally.

Just as our goals for student excellence grow, our district continues to grow in the number of families who choose to make the communities of Alvin, Manvel and Pearland home. While the sagging economy has slowed growth in some areas of the state and nation, Alvin ISD is still one of the fastest growing school districts in the Houston area. We are continuing our practice of proactively planning for this growth. A group of community members is working with the staff and the school board to develop a plan that will provide quality facilities for our student, while maintaining conservative financial impact upon our taxpayers.

A great gift of working with children in our school district is the "birth" of a new school year. I am excited as we prepare to welcome students back to school on Monday, August 25th. Please join me in wishing the boys and girls of our district a safe, enjoyable and successful 2009-2010.

Quality

PRINTING COMPANY



BUSINESS FORMS
NEWSLETTERS
FLYERS
ENVELOPES
LETTERHEADS
NCR SNAP APART
FORMS
RUBBER STAMPS
BUSINESS CARDS

Solving all your printing needs.

1-888-687-6444 ext. 24

Protect

your home or business against
disruptive power outage caused by
NATURAL DISASTERS

*Natural Gas
Generators*

A better choice for standby power:

**Secure, Permanent Installation
Stable Pipeline Fuel Supply
Automatic Operation
Cleaner Burning**

Houston's Lowest Price - Guaranteed!!

 **FINITE**
CONSTRUCTION SERVICES
COMMERCIAL / RESIDENTIAL



Experience. Ethics. Excellence.
Fully Licensed - Fully Insured
281-898-6469
www.FiniteConstruction.com

SHADOW CREEK RANCH

Stork Report in Shadow Creek Ranch

Nicholas Prakash Mathew

Born 07/08/09 at 5:53pm

7lbs 8oz, 22 inches

Proud Parents:

Deepak & Shirley Mathew

Anurag Mallick

Born 7/5/09 at 4:56pm

6lbs 14oz, 20inches

Proud Parents

Vijaya and Siddharth Mallick

Marc Andres Cantu

born 7/13/09 at 6:33pm

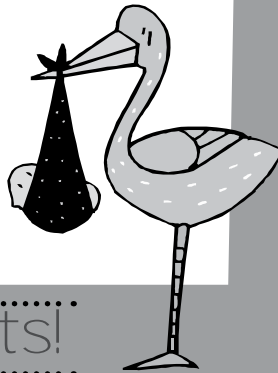
8lbs. 15oz.

21.5 inches long.

Proud and Sleepy Parents:

Patricia & Tony Cantu

Submit
your
information
on the
arrival of
your little
one to
msmith@
amitx.com



Congrats!

Not Available Online

Classified Ads

Personal classifieds (one time sell items, such as a used bike...) run at no charge to Shadow Creek Ranch residents, limit 30 words, please e-mail msmith@amitx.com.

Business classifieds (offering a service or product line for profit) are \$50, limit 40 words, please contact Peel, Inc. Sales Office at 512-263-9181 or advertising@PEELinc.com.

HOA Payments

Please note that HOA payments may be conveniently made at the office at 1920 Kinglsey Rd on the corner of 2234 and Kingsley or online at www.amitx.com with Amex, Discover or Mastercard.

Kandiland Day School
Specializing in Premier Baby Care

Premier Infant / Toddler Care

SPECIAL!!!
No Enrollment fee with this ad.

Low Infant / Staff Ratio

- Low child/Staff Ratio
- Sign language
- Reading Preparation(beginning this Fall)
- Physical Development through exercise
- Daily/weekly reports to keep you informed of your child's progress
- Bright and Spacious Rooms
- Happy, loving caregivers

2045 Reflection Bay Dr. • Pearland, Texas 77584 • 713-436-5092

GREAT BIG DEAL!

*Get the wich
you want*



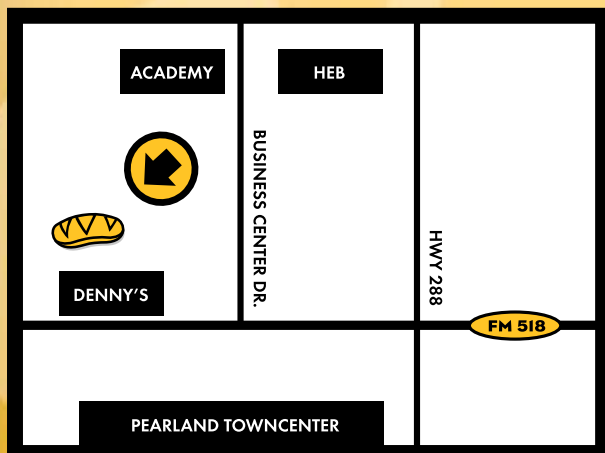
*Choose 1 of 5
great offers
when you purchase
a wich and
bring in this flyer.*

THIS OFFER IS GOOD ONLY AT THE
PEARLAND
WHICH WICH LOCATION

PEARLAND

Hwy 518 and Hwy 288
Behind Denny's

713.433.9424



 whichwich.com

- ☐ \$2 off a combo
- ☐ Free drink
- ☐ Free cookie
- ☐ Free chip & drink
- ☐ 2 for 1 shakes

Offer valid now through December 31, 2009.
One offer per bag per visit.

This coupon may be used up to 5 times until all offers have been used.

Peel, Inc.

311 Ranch Road 620 S. Ste 200
Lakeway, TX 78734-4775
www.PEELinc.com

PRSRST STD
U.S. POSTAGE
PAID
PEEL, INC.

SCR

3630 Apple Grove Dr. 1102 West Belgravia 3110 Summerfield 3402 Beacon Bend 2918 Becket 4902 Linden Place 3014 Southworth 3018 Southdown 3519 Cascade Springs 3305 Claymill Lane 7026 Castleview Lane 430 Glen Park Drive 2206 Appian Way 3522 Hansford 1010 Abbott 3422 Endicott 4907 Clover Lane 6530 Clawson 2722 South Belgravia 1042 Sussex Trail 3002 Centennial Dr. 3407 Parkside 2423 Arrowsmith 3527 Southdown 8335 Autumn Wind Dr. 715 Redwood Bend 4709 Crepe Myrtle 3303 Stanton Court 3538 Senova Drive 2206 Naomi Ave. #5 4135 North Nolan 3322 Waters Edge	4025 Ravensway Ct 4041 Quail Run 4434 Morris 3415 Coral Springs Dr. 918 East Hampton 4103 Cleburne 13011 Misty Bay 22111 Kenlake Drive 3514 Brandemere 8106 Windy Creek 4112 Caneshaw 16915 Creekline 16915 Creekline 2423 Covington Way 2462 Country Club 8106 Windy Creek 4112 Caneshaw 16915 Creekline 16915 Creekline 2423 Covington Way 2462 Country Club 4526 Brookren 11703 Shoal Landing 1051 Margate 1151 Andover 1618 Chippawa 2715 Foxden 1030 Abbott 3239 Southdown 9606 Fair Brook Way 15326 Silver Green 910 Norfolk	6322 Gabrielle Canyon 2007 North Kamren 8318 Phantom Mist 3314 Knollcrest 205 South Illinois 4615 Kimball Drive 1928 Meadow Creek 14122 Concord Meadow 2617 Easton Springs 3902 Beechwood 2702 Hidden Bay Court 3407 Helen 3115 Timberwood 2607 Pinebend 3127 Noel Court 1906 Courtside Place 3206 Chappelwood 9113 Harbor Hills 14638 Morningside View 9501 Summer Sun 15611 Rose Ridge Ct 9241 Lee Lane 3235 Wuthering Heights 3826 Vinecrest 2614 South Brompton 3315 Harbrook 9902 Bronze Mill Lane 6306 West Oaks Circle 3015 Glencullen 2474 Amberly 2751 CR 155 1806 Elm Shadow	4003 Spring Meadow Dr 811 Tennyson 9210 Lakeway View 21903 Sage Mountain 2994 CR 855B 13214 Ridgewood Knoll 2711 Alameda Plaza 1119 Wentworth 1315 Sandpiper 2702 Garner Court 6402 Windy Way 6509 Lauren 5710 Grapevine 3219 Edgewood 3423 Monarch Meadow 1526 Monterra Point 301 Hunters Lane 3004 Briarsage Lane 8711 Gentle Stone Court 1503 Red Bud 2474 Woodbury 3243 Southdown 2630 South Breeze 4207 Seminole 3039 Fallbrook 3518 Ewing 2715 West Oaks Circle 3126 Springdale 2618 Pinebend 3139 Thomas Paine 3618 Englewood 1015 Beckton	3006 Gorom Court 1018 Norfolk 2618 Granite Court 3627 Hansford Place 4103 Mustang 11407 Windy Creek 2401 Sun Spot 2202 Shady Bend 3213 Sumac 310 Gregg 3619 Pemberton 4118 Seminole 19006 Sandia Pines 3302 Wolf Court 2423 Quiet Arbor Lane 12609 Rio Bravo 1143 Andover 5302 Balmorhea 3631 Sunburst 11309 Morning Brook 3823 East Peach Hollow 3106 Birch Landing 12401 Evening Bay Drive 3715 Forney Ridge 2603 Garnet Court 11404 Harris Avenue 222 Kestrel 11571 South Kirkwood 4111 South Webber 3922 Valley Haven 5535 Hummingbird	4230 Chisholm Trail 4010 Aerial Brook Trail 2317 Willow 4318 Grapevine 3203 Wheatmeadow 4215 Bentley 2923 Burgess Hill Court 910 Knoll Forest 3411 Highland Point 2406 Sail Port 3027 Helmsley 11306 Palm Bay 1015 China Grove 2622 Umiak 1003 Covington 2710 West Oaks Blvd 2011 Plantain Lily Court 14214 Autumn Ridge Tr 3114 Jorns 4115 Caneshaw 5227 Kelling 14216 Stone Bluff 4419 Leyland 2304 Diamond Springs 5418 Flamingo 10112 Forest Spring 3507 Pickering 407 Present 1415 Ruel Street 8310 Wainwright Way
---	---	---	--	--	--

Over 6300 Homes SOLD!

**Your
Home
Here!**

Sam SOLD It.com



**Count on Pearland Sam's 34+ years
of experience to Get Yours SOLD!!**

**Sam
FERRERI**

RE/MAX[®] Top Realty
Each Office
Independently Owned and Operated



PearlandSamTEAM.com

832-200-5656



CERTIFIED DISTRESSED PROPERTY EXPERT

Direct Impressions & More
Marketing 713.545.1269