



Welcome to Silverlake HOA News

Official Newsletter of the Silverlake Homeowners Association

Silverlake HOA News is a monthly newsletter mailed to all Silverlake residents. Each newsletter will be filled with valuable information about the community, local area activities, school information, and more.

If you are involved with a school group, play group, scouts, sports team, social group, etc., and would like to submit an article for the newsletter, you can do so online at www.PEELinc.com, or you can email to silverlakenews@gmail.com. Personal news (announcements, accolades/ honors/ celebrations, etc.) are also welcome as long as they are from area residents.

GO GREEN! Subscribe via Peelinc.com to have an email sent to you with a link to a PDF of the newsletter, or have an email sent to you instead of having a newsletter mailed to you!

Neighborhood Committee & Rep Elections

The Silverlake HOA will soon have elections for Neighborhood Committees and Representatives. The HOA is divided into 18 "neighborhoods" (12 residential & 6 commercial), each of which elects a 3-member committee, of which the person receiving most votes becomes the Neighborhood Representative. The Committee serves a term of 2 years. The Rep's duties include attendance at Association meetings requiring Representative attendance and casting of the number of eligible votes allotted to the Neighborhood he or she represents for any Association matter or issue requiring a vote by the members. Aside from this, the Rep and Committee positions are what the committee members make of them. This can be a very useful and valued position for your Neighborhood!

If you are interested in running for a position on your Neighborhood Committee, including Neighborhood Rep, please submit your name, address, and bio to silverlakehoa@gmail.com.

For more information on the HOA structure, including election and terms for Neighborhood Committee members, please refer to the Amended & Restated By-Laws found in the Documents section of the HOA website, www.SilverlakeHOA.com.

Silverlake Elementary News



*Cayden Adamson of Mrs. Reynold's class
at the golf game booth*

Silverlake Elementary PTO held its annual fall carnival on Saturday, October 3rd with a "STARS Under the Big Top" Extravaganza! Participants enjoyed food, drinks, inflatables, carnival games, a silent auction, prize baskets, entertainment, and even a mechanical bull! Silverlake PTO would like to thank all the community sponsors, organizers, parents, faculty, staff, and all the attendees who made this year's carnival such a success! The money raised at carnival allows the PTO to fund programs benefitting the school and community. A special thanks goes out to our Gold Level Sponsors: Bounce U, Bushi Ban, Celia Lewis Photography, Chick-Fil-A, Diamond Ice, Elements Jiu- Jitsu, Houston Sign Company, Primrose School of Pearland, and Texas Roadhouse.

IMPORTANT NUMBERS

BRAZORIA COUNTY SHERIFF	281-331-9000
POISON CONTROL	281-654-1701
CENTERPOINT ENERGY (GAS)	713-659-2111
Report streetlights out	713-207-2222
(street lights need 6 digit pole #) www.centerpointenergy.com/outage	
RELIANT ENERGY (ELECTRIC)	713-207-7777
MUD #2 SEVERN TRENT	281-579-4500
MUD #3 & 6 SOUTHWEST WATER CO	
(formerly ECO Resources)	713-405-1750
BRAZORIA COUNTY ROADS & BRIDGES	
(street and curb repairs)	281-331-3197
For street sign concerns	281-756-1548
WASTE MANAGEMENT	281-487-5000
MOSQUITO CONTROL	281-331-6106 EXT. 1532
Emergency	911
(always use if life or property are at risk)	
Non-emergency	281-331-9000

SILVERLAKE HOA INFO

C/O KHARA MATHEWS

Planned Community Management, Inc.
15995 North Barker's Landing, Suite 162
Houston, Texas 77079
KMathews@stes.com
281-870-0585

HOA website: www.silverlakehoa.com/

NEWSLETTER INFO

EDITOR

To Submit Articles/News..... silverlakenews@gmail.com

PUBLISHER

Peel, Inc www.peelinc.com, 888-687-6444
Advertising advertising@peelinc.com, 888-687-6444

ARTICLE INFO

The Silverlake News is mailed monthly to all Silverlake HOA residents. Residents, community groups, schools, etc., are welcome to submit information. Personal news is also welcome. All submissions will be reviewed for content and approved by the Board of Directors and Newsletter Committee Chair. The deadline for submission is the 8th of the month before publication.

Silvercrest Elementary

By Angela Dennis

Fall has arrived....and we are happy to announce lots of fun and exciting events in store for our Silvercrest Stallions!

We are very excited that PTA membership has reached almost 400! We hope those numbers can continue to increase. We are encouraging all DADS and GRANDPARENTS to join the PTA. The cost to join is \$7/person. You can be involved as little or as much as you can. This is such a great way to be a strong part of your student's elementary school experience. For more information, please contact Lori Montgomery at fied96@yahoo.com. We hope that all parents will plan to attend our bimonthly PTA meetings—the next one is on November 12 and Chick Fil A will have sandwiches, nuggets and more for sale!

We wanted to thank two local businesses for their generous donations to our school—Whitney Bank sponsored our Back to School Teacher Breakfast and Advanced Pharma donated \$500 towards book for the STEP tutoring program.

The outdoor learning center is almost complete! Proceeds from last year's fundraiser allowed us to finish the learning center with three picnic tables and three benches, buy swings and a fire truck play structure for the K-2nd grade playground. This year, our fundraising

(Continued on Page 3)

OBJECTIVE:
Personal Service





Personal
& Business
Insurance



FARMERS

WELCOME!

713.436.4707

11711 Shadow Creek Parkway, Suite 145

www.LeBlancInsuranceAgency.com

Silvercrest Elementary - (Continued from Page 2)

goals are technology upgrades. We look forward to providing this for our awesome teachers!

Thanks to everyone for participating in our fall fundraiser. We exceeded our goal and will be able to fund all PTA programs this year! It's time to mark your calendars for our spring fundraiser—the Fun Run, Breakfast and Auction will be March 27! Our goal is to raise money for technology upgrades for Silvercrest. We know our teachers will appreciate this!!

Stallion Scrips is coming! We will once again offer the Stallion Scrip gift card program this November. You can purchase gift cards for all of the people on your holiday list and buy gift cards for all the retailers you regularly buy from. Start your holiday shopping early—buy gift cards for family, teachers or for yourself! Percentages from each of the gift cards bought will go to the Silvercrest PTA.

Silvercrest students are entering their original art work and photographs in the 2009-2010 Reflections Art Program. The theme this year is "Beauty is..." Judging will take place in early November and winners will be announced in mid-November. Entries will be judged on artistic merit, creativity and interpretation of the theme.

We will also hold our Annual Food Drive to benefit the Pearland Neighborhood Center November 2-13. The grade level that brings the most items will be honored with an ice cream

party. Pearland Neighborhood Center is asking for the following items to re-stock their food/dry goods pantry:

- Kindergarten: Toothbrushes, toothpaste, mouthwash, razors, shaving cream & floss
- First Grade: Diapers, wipes, toilet paper, hand sanitizer, lotion, paper towels, tissues
- 2nd Grade: Canned vegetables, canned fruits, soups, canned beans, potatoes
- 3rd Grade: Pasta, pasta sauce, spaghetti, ramen noodles, canned tuna, chicken, etc..
- 4th Grade: Dry mixes, rice, boxed meals, mac & cheese, peanut butter, jelly

We thank everyone in advance for taking the time to help others in need during this holiday season!

We know everyone is looking forward to Santa Night on December 3 from 6 to 8 p.m.! NY Pizzeria will be catering pasta, salad and bread. The advanced ticket cost is \$6 for adults and \$5 for children. Tickets can be purchased at the door for an additional cost. Santa will be there for photos, games, crafts with a special appearance by Mrs. Claus for a book reading. We will also have a toy drive that evening. Stallion Scrips will also be available for pick up.

(Continued on Page 4)



LIVING EARTH™

Picked-up or Delivered
Open to the public

www.livingearth.net



Bring in your newsletter to any Houston location and pick up 2 bags of Living Earth Houston Mulch

FREE*

Just for visiting!

* 2 bag limit per household.
Offer ends December 18, 2009

We offer a wide selection of materials including Soils, Mulches, Sand, Gravel and Natural Stone!

FALL IS FOR MULCHING!

Did you know? Mulching conserves water and even lowers temperatures!

LOOK FOR US IN YOUR NEIGHBORHOOD!

Iowa Colony • 16138 Highway 6, Iowa Colony, TX. 77583

(281) 431-3400

Now open on Hwy 6 - 1.3 miles west of 288

Monday-Friday 7:30 AM - 5 PM, Saturday 7:30 AM - 12 PM, Closed Sunday

LIVING EARTH™ – Houston Area Locations:

Crawford Road (713) 466-7360	Missouri City (281) 499-5641	League City/Dickinson (281) 337-7800	Katy Freeway (281) 579-1472
Cutten Road (281) 537-2377	Richmond (281) 342-6113	Kingwood/New Caney (281) 689-6083	Woodlands (936) 321-4001

Silverlake

Silvercrest Elementary - (Continued from Page 3)

IMPORTANT DATES THIS FALL:

- November 2-13—PTA Annual Food Drive
- November 2-13—Stallion Scripts on sale
- November 9-20—Book Fair
- November 11—Dream Dinners Night (prepare meals and raise money for our school!)
- November 12—General PTA Meeting at 6:30 p.m. in the cafeteria with Chick Fil A sandwiches, nuggets, cheesecakes and calendars for sale!
- November 18—Donuts for Dad
- November 19—Papa John's Pizza Night (order in and raise money for our school!)
- December 3—Evening with Santa (6:30 to 8:30 p.m.)
- December 8—Chili's Night (eat out and raise money for our school!)
- January 12—General PTA Meeting at 6:30 p.m. in the cafeteria with school board member Andrew Solomon as speaker

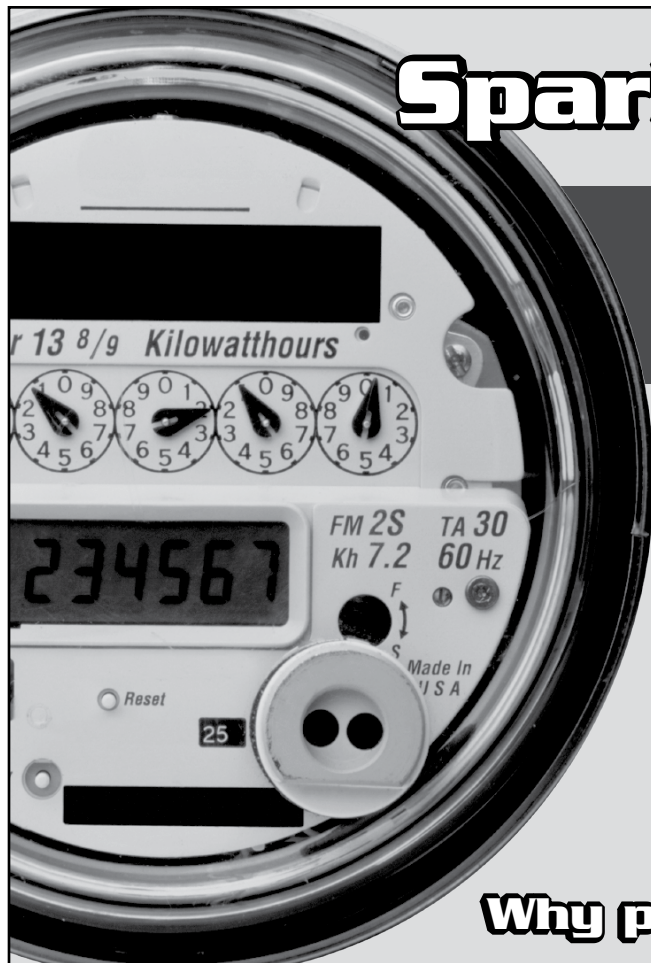
Please consider volunteering for our STEP program—this is a wonderful opportunity to help first graders learn to read...and it only requires a 30 minute per week commitment! We typically have 40 to 50 students in this program...and currently only have 20 volunteers.

We need your help! Tutors meet with their student one time a week for a half hour during school hours (Monday through Thursday, 8 a.m. to 11 a.m.) You can choose the day and time each week. Once our volunteer team is assembled, we will conduct training so no advance knowledge or experience is needed. If you would like more information or would like to volunteer, please contact Micheline Abboud at abbouds@sbcglobal.net or at 713-851-0099.

We invite all parents and teachers to join/register on the Silvercrest PTA website (<http://silvercrest.txpta.org/>) so that you can be on the email list and receive important information from the PTA. Just go to the website and click on "register" in the upper right corner. You then create an account login name and password. You may also email the PTA directly at SilvercrestPTAinfo@gmail.com.

Calling All Bookworms!

The Silverlake Book Club meets on the second Thursday of the month at 7 p.m. in a member's home. We discuss a wide variety of books including literary and popular fiction, classic novels, and nonfiction works. If you are interested in joining us, please contact Millie at millie0117@aol.com.



Spark Power Bank

**We Challenge What
You Pay For Electricity**

**SIGN-UP ONLINE TODAY!
WWW.SPARKPOWERBANK.COM**

Please choose "Newsletter Ad" as your referral

**I'm Texas Energy Analyst Alan Lammey.
Maybe you've heard me on the radio talking
about the market forces that drive energy
prices. I'm here to tell you that you're not
stuck paying those high prices
to big electric companies anymore!**

Why pay more than you have to?

GREAT BIG DEAL!

*Get the wick
you want*



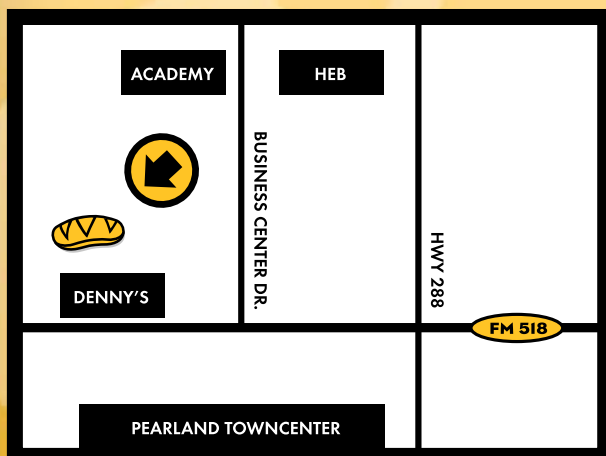
*Choose 1 of 5
great offers
when you purchase
a wick and
bring in this flyer.*

THIS OFFER IS GOOD ONLY AT THE
PEARLAND
WHICH WICH LOCATION

PEARLAND

Hwy 518 and Hwy 288
Behind Denny's

713.433.9424



 **whichwich.com**

- ☐ \$2 off a combo
- ☐ Free drink
- ☐ Free cookie
- ☐ Free chip & drink
- ☐ 2 for 1 shakes

Offer valid now through December 31, 2009.
One offer per bag per visit.

This coupon may be used up to 5 times until all offers have been used.

ASK THE COACH

Dear Coach,

I have flat feet and am looking for a new pair of running shoes. What do you recommend?

Shin Splints in Silverlake

Dear Shin Splints,

This may be my favorite question that I am asked. Two thirds of the world's population have flat feet. Only in extreme cases should you worry about flat feet. Please consult an orthopedist to see if you need extra padding.

Typically the root cause of shin splints is improper mechanics. I blame the fact that most athletic programs (P.E., athletics, etc) focus on the skill portions of a sport (catching, hitting, strategy) versus how to move from one place to another. An elite athlete running will put between 2-5 times their body weight into the ground per stride. A recreational runner with improper mechanics will put between 4-6 times their body weight into the ground. If you want to truly fix shin splints, find out if you are running correctly first.

Next, numerous studies have shown that \$40 running shoes are better than \$100 running shoes. This is caused by the fact that our feet require a certain amount of nerve stimulus in order to react accordingly. The thicker the sole, the more you will overstep and have to overcome braking forces. Braking forces assist in shin splints, tendinitis, osgood schlatters disease, hip and back injuries, etc.



*To submit your
fitness/athletic
questions, please
email silverlakenews@gmail.com.*

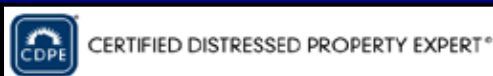
TRUST - COMMITMENT - SERVICE
Every step of the way...

TOGETHER, WE CAN WIN!
Call me today!

Your Home Coach
832-428-6207
RE/MAX Top Realty

Your Home Coach
VINCE KEARNEY
PearlandHomeCoach.com

Do you want to prevent FORECLOSURE?
Call me for a confidential consultation.



**No Matter the Event, Graduation,
Wedding, Shower, etc. We Can Help.**

Housework won't kill
you, but why risk it.
Let our gloves
do your
dirty work!

1st Quality Service
Competitive Rates

Call about
our special
rates for:

Up To 3 Bedrooms
+ 2 1/2 Baths,
Kitchen, Living Room
& Dining Room.*
\$9 Each Additional Room
(Reg. \$10)

* Rate based on bi-weekly service after initial
cleaning for homes less than 3000 sq. ft.
Restrictions apply. Call for details.

- ✓ Weekly, Bi-Weekly,
Monthly and
One-Time Services
- ✓ Detail Services
- ✓ Move In/Outs
- ✓ Homes and Offices
- ✓ Fully Trained Staff
- ✓ Bonded and Insured
- ✓ All Equipment and
Supplies Provided

www.whitegloveskleansvcs.com

Not affiliated with any other White Gloves Cleaning.

✧ *White Gloves Kleaning Services* ✧

Call **281-99-SLIME** for a Free Phone Estimate!
(281) 997-5463



\$25 Off

Our Detail Service
With Coupon Only.

***FREE**
Refrigerator or
Oven Cleaning

When Setting Up Bi-Weekly or Weekly
Regular Service (\$20.00 Value)
*\$50 off your service for referral
Unlimited!

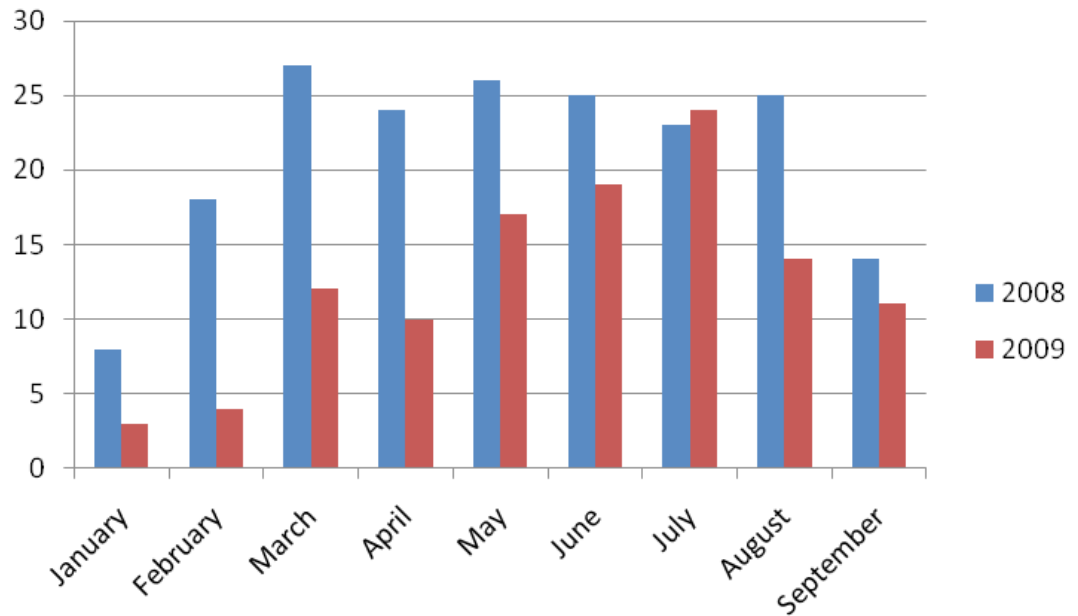
With Coupon Only.

HOME SALES IN SILVERLAKE

NUMBER OF SINGLE FAMILY HOMES SOLD

Have you wondered what toll the economy has really taken on home sales in our neighborhood? If so, the following charts show some 3rd quarter comparisons. If you are interested in other information, or information specific for your subdivision, feel free to email silverlakenews@gmail.com with your questions.

(Continued on Pages 8-9)



PROMOTE YOUR BUSINESS *in Style!*

- BUSINESS CARDS / BUSINESS CARD MAGNETS / MAGNETS
- POST-IT® NOTES / CUBES & MEMO PADS / DECALS
- BUMPER STICKERS / MEMBERSHIP CARDS & ID BADGES
- PERSONALIZED WRITING INSTRUMENTS / CALENDARS
- HEALTHCARE PROMOTIONS / DRINKWARE & KOOZIES®
- NEWSLETTERS / BOOKLETS / FLYERS
- ENVELOPES / LETTERHEADS / RUBBER STAMPS
- BUSINESS FORMS / AND MUCH MORE....

NEED AN ADVERTISING SPECIALITY ITEM?

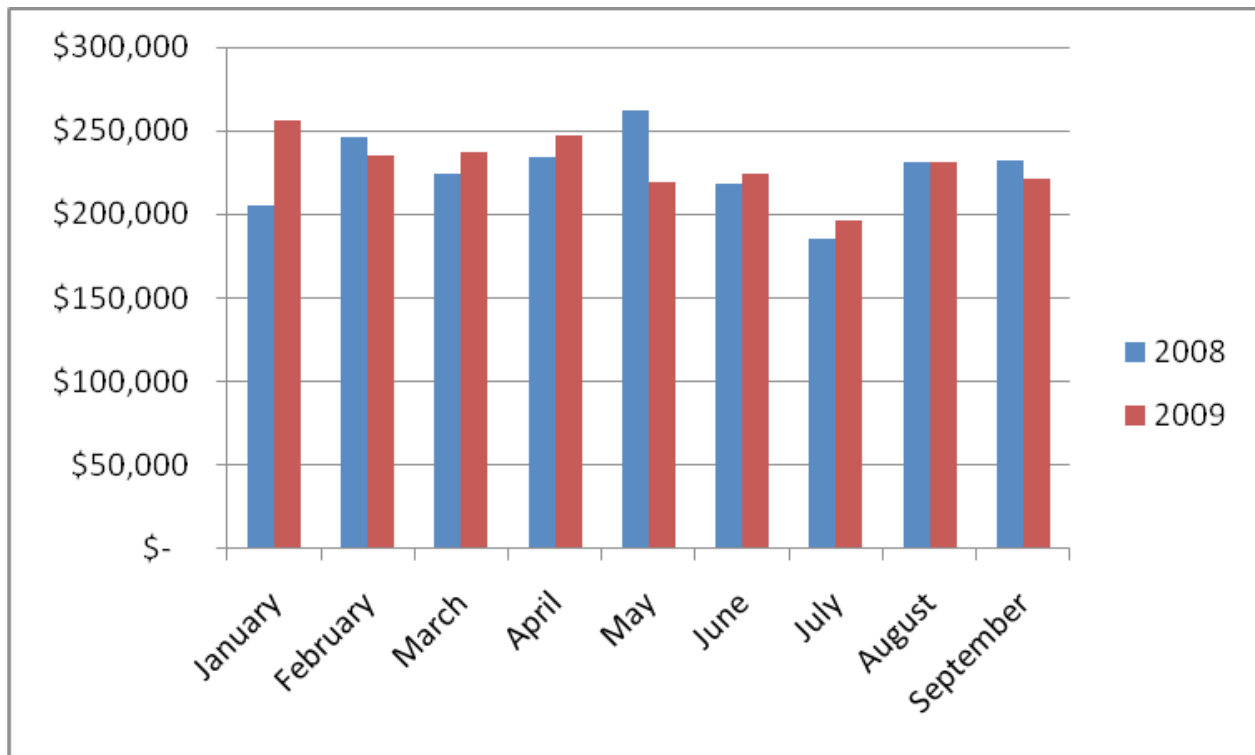
1-888-687-6444 ext. 24

Quality
PRINTING COMPANY

Experience Matters
Doing business for
30+ years.



AVERAGE HOME SALES PRICE



PEEL, Inc. COMMUNITY NEWSLETTERS

Blackhorse Ranch
Bridgeland
Coles Crossing
Copperfield
Cypress Mill
Cypress Point
Eagle Springs
Enchanted Valley
Fairfield
Harvest Bend The Village
Lakes of Fairhaven
Lakes on Eldridge
Lakes on Eldridge North
Lakewood Grove
Legends Ranch
Longwood

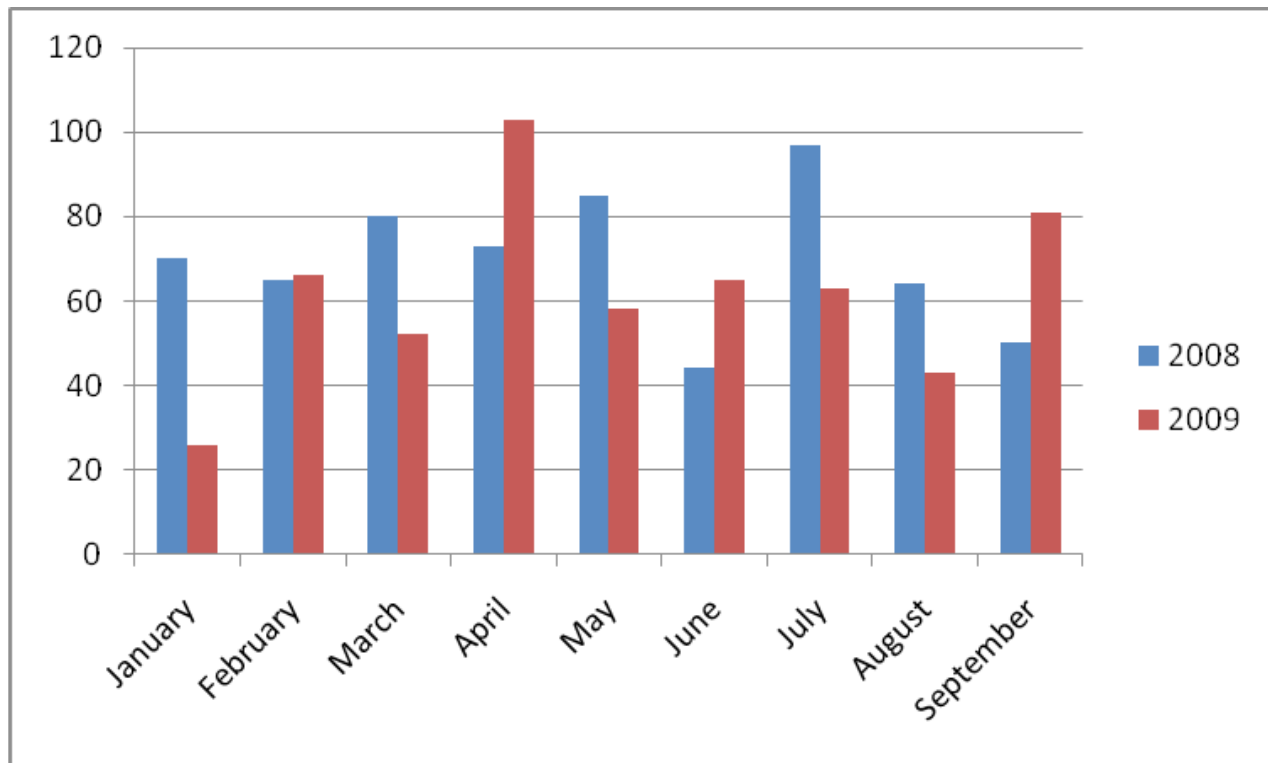
Pine Brook
Riata Ranch
Shadow Creek Ranch
Silverlake
Steeplechase
Stone Gate
Summerwood
Village Creek
Willowbridge
Willowlake
Willow Pointe
Winchester Country
Winchester Trails
Windermere Lakes
Woodedge Village
Wortham Villages



1-888-687-6444
advertising@PEELinc.com
www.PEELinc.com

Publishing Community Newsletters Since 1991

AVERAGE DAYS ON MARKET



**NOT AVAILABLE
ONLINE**

Business Classified

INTEGRITY PRESSURE WASHING: Is it time to make your home shine again? I am offering a \$250 all inclusive home pressure washing. Call Bryan "Capt. Morgan" Gardner. Also an Independent Monavie Distributor 678-791-6669.

Classified Ads

Business classifieds (offering a service or product line for profit) are \$50, limit 40 words, please contact Peel, Inc. Sales Office at 1-888-687-6444 or advertising@peelinc.com.

Bashans Painting & Home Repair

Commercial/Residential
Free Estimates

281-347-6702



281-731-3383 cell



- Interior & Exterior Painting
- Hardi Plank Installation
- Wood Replacement
- Sheetrock Repair
- Interior Carpentry
- Cabinet Painting
- Wallpaper Removal and Texturizing
- Pressure Washing
- Fence Repair/Replacement
- Garage Floor Epoxy
- Custom Staining
- Roofing
- Gutter Repair/Replacement
- Faux Painting

References Available • Fully Insured

NO PAYMENT UNTIL COMPLETION

bashanspainting@earthlink.net



Family Owned & Operated Since 1999

2755 Manvel Rd (FM 1128)

Pearland, Tx 77584

281-997-3644

Scheduled Maintenance, Eng Performance, A/C Service,
Brakes, Electrical, Alignments, Oil Change

***10% OFF ANY MAJOR REPAIR**

*(Please mention this ad at time of service *Max Discount \$50)*

Thank You For Your Business!

Defensive Handgun Instruction **www.dhinstruction.com**



Former Military Instructor
Personal Protection Training

Houston Area
dhinstruction@hotmail.com

At no time will any source be allowed to use The Silverlake News contents, or loan said contents, to others in anyway, shape or form, nor in any media, website, print, film, e-mail, electrostatic copy, fax, or etc. for the purpose of solicitation, commercial use, or any use for profit, political campaigns, or other self amplification, under penalty of law without written or expressed permission from Peel, Inc. The information in the newsletter is exclusively for the private use of Peel, Inc. and the Silverlake HOA.

DISCLAIMER: Articles and ads in this newsletter express the opinions of their authors and do not necessarily reflect the opinions of Peel, Inc. or its employees. Peel, Inc. is not responsible for the accuracy of any facts stated in articles submitted by others. The publisher also assumes no responsibility for the advertising content with this publication. All warranties and representations made in the advertising content are solely that of the advertiser and any such claims regarding its content should be taken up with the advertiser.

* The publisher assumes no liability with regard to its advertisers for misprints or failure to place advertising in this publication except for the actual cost of such advertising.

* Although every effort is taken to avoid mistakes and/or misprints, the publisher assumes no responsibility for any errors of information or typographical mistakes, except as limited to the cost of advertising as stated above or in the case of misinformation, a printed retraction/correction.

* Under no circumstances shall the publisher be held liable for incidental or consequential damages, inconvenience, loss of business or services, or any other liabilities from failure to publish, or from failure to publish in a timely manner, except as limited to liabilities stated above.

Advertise YOUR business to YOUR neighbors for less than 4¢ per home.

Effective Advertising, Done Right.

Call today to Reserve your space.

Peel, Inc.
COMMUNITY NEWSLETTERS

512-263-9181

www.PEELinc.com

SLV



Attention KIDS: Send Us Your Masterpiece!

Color the drawing below and mail the finished artwork to us at

Peel, Inc. - Kids Club

311 Ranch Road 620 S, Suite 200

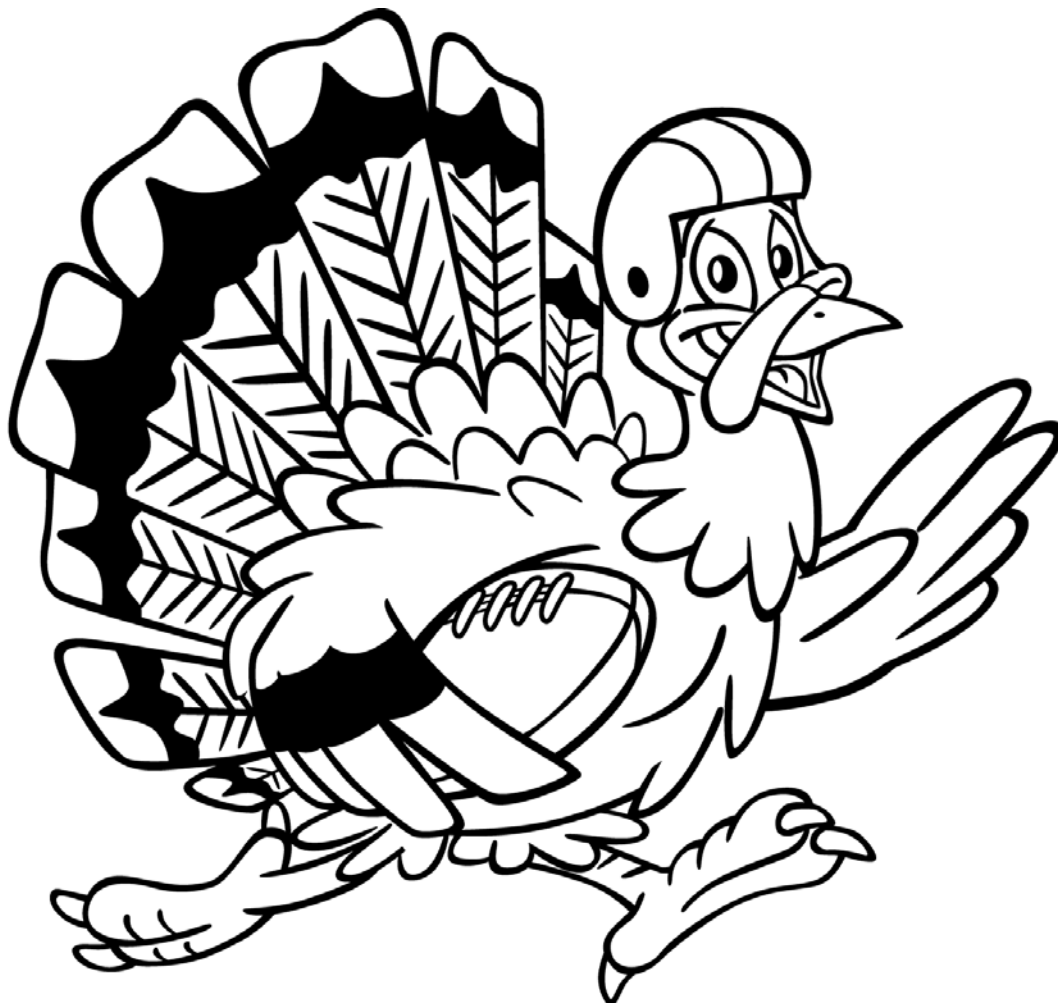
Lakeway, TX 78734

We will select the top few and post their artwork online at www.PEELinc.com. DUE: November 30th

Be sure to include the following so we can let you know!

Name: _____ Email Address: _____
(first name, last initial)

Age: _____ [This information will only be used to notify you or your parents if your artwork was selected.]



SLV

Peel, Inc.

311 Ranch Road 620 S. Ste 200
Lakeway, TX 78734-4775
www.PEELinc.com

PRSR STD
U.S. POSTAGE
PAID
PEEL, INC.

SLV

LISTED ⇒ STAGED ⇒ MARKETING
⇒ Sam *SOLD* It.com ⇐

**Experience the MAGIC
of the Pearland Sam TEAM!**



Sam
FERRERI

PearlandSamTEAM.com

Let us help you with the MAGIC of Home Staging!

Home staging is about illusions. It is how David Copperfield would sell a house. Beyond decorating and cleaning, it's about perfecting the art of creating moods. Staging makes your house look bigger, brighter, cleaner, warmer, and, best of all, makes home buyers want to buy it. And we have two certified home stagers on staff ready to help you get yours ready and **SOLD!**

CALL SAM TODAY!

832-200-5656

RE/MAX

**Top
Realty**



Each Office
Independently Owned and Operated