



The HOME FRONT

December 2009

Official Publication of Legends Ranch Property Owners Association

Volume 3, Issue 12

REPORT IT!!!

If you witness any suspicious behavior around the community please contact the local authorities immediately. Non-emergency numbers: Sheriff 936-760-5800 - Pct. 3 Constable 281-363-1161. DIAL 911 FOR EMERGENCIES.

ANNUAL ASSESSMENTS

Due Soon!

With Annual Assessments due very soon your Board of Directors would like to remind all homeowners that payment arrangements are offered by the POA. As soon as you receive your annual assessment bill please look in your bill for the included memo page that gives specific directions on setting up a payment plan for the 2010 assessments.

Payment via credit card can be made online only at www.pcmi-us.com. In order to pay online, you must have your POA account number provided on your statement.

As a payment alternative, if you would like to begin pre-paying your 2010 annual assessments please call PCMI at 281-870-0585. Should you have any questions regarding this matter, please do not hesitate to contact PCMI and speak with your property manager Brandi Leal.

4TH ANNUAL HOLIDAY YARD

Decorating Contest, December 6th - 12th

Start planning your holiday decorations!

Legends Ranch favorite Annual Holiday Decorating Contest returns.

Each section in Legends Ranch will have one winner, awarded a special prize.

Most importantly, they'll get to display their

winning yard sign during the holiday season!

Make sure your lights are on from

Sunday, December 6th to Saturday, December 12th

as our volunteer judges will be driving the community to choose a winner!



LEGENDS RANCH

Important Numbers

Property Tax

Montgomery County Tax	936-539-7897
Conroe ISD	936-709-7751
Montgomery MUD #89	713-932-9011

Your Community Homeowners Association

PCMI Management	281-870-0585
Legends Ranch Info Center	281-681-9750
Legends Ranch SplashPad	281-419-2130
Gate Attendant Office	281-296-0433
Light Pole Outages	281-681-9750
Houston National Golf Club	281-304-1400

Police & Fire

Emergency	911
Montgomery Sheriff	936-760-5800
Pct. 3 Constable Office	281-363-1161
S. Montgomery Co. Fire Dept. Non-Emergency	281-363-3473
Montgomery County EMS Non-Emergency	936-441-6243
Crime Stoppers	713-222-TIPS
Poison Control	800-222-1222
Texas DPS	713-681-1761

Utilities

Electricity (TXU)	800-368-1398
Electricity (TXU New Service)	281-441-3928
Electricity (Centerpoint)	713-207-2222
Gas (Centerpoint)	713-659-2111
Water & Sewer	281-353-9756
Canyon Gate Connect	281-296-9584
Waste Management	713-686-6666
Street Light Outages	713-207-2222

Public Services

Local US Post Office	281-419-7948
Toll Road EZ Tag	281-875-3279
Voters Registration	936-539-7843
Vehicle Registration	281-292-3325
Drivers License Information	936-442-2810
Montgomery County Animal Control	936-442-7738
Montgomery Chamber	281-367-5777

Area Hospitals

Memorial Hermann	281-364-2300
St. Luke's	832-266-2000
Conroe Medical Center	281-364-7900

Conroe ISD	936-709-7751
Birnam Woods Elementary	281-863-4200
Cox Intermediate	281-465-3200
York Junior High	832-592-8600
Oak Ridge High	832-592-5300

Private/Parochial

First Baptist Church	936-756-6622
Sacred Heart Catholic Church	936-756-3848
St. Edward Catholic	281-353-4570
St. James Episcopal Day	936-756-4984

Board & Management Co.

Management Co.:

Brandi Leal..... bleal@stes.com
Phone: 281-870-0585 Fax: 281-531-4611

Board Members:

Linda Houston..... lhouston@LANDTEJAS.com
Bliss Roberts..... bliss7us@yahoo.com
Al Brende..... apbrende@LANDTEJAS.com
Rick Gadd..... rgadd@LANDTEJAS.com
Greg Grant..... greg.grant@verizonbusiness.com

Newsletter Information

Editor

Jennifer Clark jclark@canyongate.com

Publisher

Peel, Inc. www.PEELinc.com, 888-687-6444
Advertising..... advertising@PEELinc.com, 888-687-6444

Advertising Information

Please support the businesses that advertise in the Legends Ranch Community Newsletter. Their advertising dollars make it possible for all Legends Ranch residents to receive the monthly newsletter at no charge. No homeowners association funds are used to produce or mail the newsletters. If you would like to support the newsletter by advertising, please contact our sales office at 888-687-6444 or advertising@PEELinc.com. The advertising deadline is the 10th of each month for the following month's newsletter.

Have you logged in yet?

www.canyongate.com/residents/lr

Features of the Legends Ranch Community intranet include:

- Resident Directory
- Documents and Forms
- Amenity Web Cams
- Event Photos and MORE!
- Current Events & Activities

**Advertise
Your Business Here
888-687-6444**

HOLIDAY BREAKFAST WITH SANTA

& Toys for Tots Toy Drive

**Saturday, December 5th
9:30am-11:30am at Clubhouse**

Take your photo with Jolly St. Nick
as we welcome in the Holiday Season!



We'll be serving holiday treats
& entertainment
for children young & old!

This year we're hosting a Toys
for Tots Toy Drive!
If you'd like to contribute, please
bring an unwrapped toy to the
Clubhouse.

Don't forget your camera!

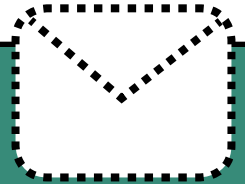
Clubhouse Onsite Office Hours

Tuesday through Saturday 9am until 5pm
Onsite Community Director: Denise Saxton
Phone: 281-681-9750
Email: Irreccenter@comcast.net

Splashpad Texas Office Hours

Thursday through Saturday - 9am until 5pm
Phone: 281-419-2130

Go Green Go Paperless



Sign up to receive
The Home Front in your inbox.
Visit PEELinc.com for details.

STATE FARM
Auto
Life Fire
INSURANCE

KYLE SHERBURNE
281-363-4440
KSAGENCY.NET

MERRY CHRISTMAS!
-The KS Team

LEGENDS RANCH

Legends Ranch Fall Festival

Was a huge success & great fun with games & prizes.

Please Support Your Community Event Sponsors!

A Special Thank You to Moonwalk & Piñata Sponsor,

Kyle Sherburne State Farm Insurance

Delicious Snowballs Sponsor, Senor Gordy's,

and Sound System Sponsor, Paul Cote with ERA Allstar Properties.

**VIEW PICS
IN COLOR
ONLINE AT
PEELINC.COM**



Peel, Inc.

Printing & Publishing

Publishing community newsletters since 1991

1-888-687-6444 • www.PEELinc.com



Kari Harrison

Sales Representative

713-855-1731

kari@peelinc.com

Support Your Neighborhood Newsletter.

*Advertise your business
to your neighbors.*



PROMOTE YOUR BUSINESS *in Style!*

- BUSINESS CARDS / BUSINESS CARD MAGNETS / MAGNETS
- POST-IT® NOTES / CUBES & MEMO PADS / DECALS
- BUMPER STICKERS / MEMBERSHIP CARDS & ID BADGES
- PERSONALIZED WRITING INSTRUMENTS / CALENDARS
- HEALTHCARE PROMOTIONS / DRINKWARE & KOOZIES®
- NEWSLETTERS / BOOKLETS / FLYERS
- ENVELOPES / LETTERHEADS / RUBBER STAMPS
- BUSINESS FORMS / AND MUCH MORE....

NEED AN ADVERTISING SPECIALITY ITEM?

1-888-687-6444 ext. 24



Quality
PRINTING COMPANY

Experience Matters
Doing business for
30+ years.

LEGENDS RANCH

LIVING LEGENDS

The Seniors Group



The Living Legends are young at heart, 50 and older, retired or still working, male or female, and residents of Legends Ranch. The group has fun & is comprised of neighbors who are eager to be active, see and do new things, and be a vital part of this neighborhood.

In October, we met at the Crescent Moon Wine Bar on Rayford Road for dinner and music. The entertainment was wonderful, the food excellent, and the fun was over the top.

For those of you who haven't yet met with us, please join us on the 3rd Friday of each month at the Clubhouse. We plan interesting upcoming events, and often play games afterwards. Come let us meet you, and get acquainted with more of your neighbors!

Interested in more information or joining this new group? Contact Barbara Ellsworth at bearclan3@live.com.

LEGENDS RANCH

Walking Group

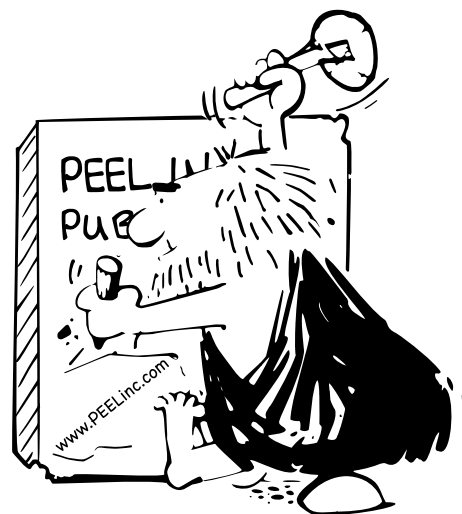
Need to walk off all the Holiday Cheer??? Interested in walking, but need to be motivated? The Walking Group is just what you've been waiting for! Based on group input, we created several "standing" walk dates, starting at the SplashPad playground on Tuesday's & Thursday's at 6:30pm.

Contact Michelle at mitchell04@sbcglobal.net to join the group and for additional information!

PEEL, Inc. COMMUNITY NEWSLETTERS

Blackhorse Ranch
Bridgeland
Coles Crossing
Copperfield
Cypress Mill
Cypress Point
Eagle Springs
Enchanted Valley
Fairfield
Harvest Bend The Village
Lakes of Fairhaven
Lakes on Eldridge
Lakes on Eldridge North
Lakewood Grove
Legends Ranch
Longwood

Pine Brook
Riata Ranch
Shadow Creek Ranch
Silverlake
Steeplechase
Stone Gate
Summerwood
Village Creek
Willowbridge
Willowlake
Willow Pointe
Winchester Country
Winchester Trails
Windermere Lakes
Woodedge Village
Wortham Villages



1-888-687-6444
advertising@PEELinc.com
www.PEELinc.com

Publishing Community Newsletters Since 1991

LR MOM'S GROUP

Standing Play-Date

1st Saturday of the month, 10AM – Noon
at LR Clubhouse Park

1st Tuesday of the month, 10AM – Noon
at SplashPad

All are welcome to join the mom's club at our standing play-dates at the Legends Ranch Clubhouse park on the first Saturday and SplashPad on the 1st Tuesday of the month

Interested in being added to the Mom's Club roster? Email jclark@canyongate.com with your children's name & birth year.

SEEKING SECTION LEADERS

and Block Captains

To increase community awareness, the Communications Committee is actively recruiting section leaders and block captains. For more information on becoming a block captain or section leader, please contact Jennifer Clark, Director of Community Events. To reach your section leader, also contact jclark@canyongate.com.

Yard of the Month NEW!

Do you have a neighbor or friend in the community who has an outstanding front yard? Nominate them for the Yard of the Month!

Please forward your nomination and e-mail a picture of their front yard to jclark@canyongate.com.



Street Light Maintenance

To report a street light that is not working, contact Centerpoint Energy at 713-207-2222. You will need to provide them with the number located at the base of the pole and the street address. You can also report outages online at www.centerpointenergy.com/outage.

Want an Honest and Hard Working
Realtor Working for YOU?
"Actions Speak Louder Than Words."



**MARTY
COWHAM**

ACTIONS SPEAK LOUDER
THAN WORDS

ABR, e-Pro, Realtor®
Cell: 832-715-1872
VM: 281-863-1935
Fax: 281-364-9971
Email: MartyCowham@aol.com

*Have a Safe & Happy
Holiday Season!*



KELLER WILLIAMS
R E A L T Y

1401 Woodlands Parkway
The Woodlands, Texas 77380
Each Office is Independently Owned & Operated



Bashans Painting & Home Repair

Commercial/Residential
Free Estimates

281-347-6702



281-731-3383 cell



- Interior & Exterior Painting
- Hardi Plank Installation
- Wood Replacement
- Sheetrock Repair
- Interior Carpentry
- Cabinet Painting
- Wallpaper Removal and Texturizing
- Pressure Washing
- Fence Repair/Replacement
- Garage Floor Epoxy
- Custom Staining
- Roofing
- Gutter Repair/Replacement
- Faux Painting

References Available • Fully Insured
NO PAYMENT UNTIL COMPLETION
bashanspainting@earthlink.net

LEGENDS RANCH

REMINDER ABOUT

Basketball Goals

Basketball is a fun sport that many like to play. As a reminder, please make sure that all basketball goals are kept in an upright position in your driveway. Basketball goals should not be left in the street at anytime. Leaving basketball goals in the street can be a nuisance to drivers in the community and a hazard should there be a need for an emergency vehicle to gain access to your street. Please note this is also a violation and if you receive violation letters regarding this matter you could be sent to the attorney and be liable for these charges.

PLEASE CONTROL

Your Pets!

Please respect your neighbors' yards...remember that pets must be confined to a fenced backyard or within your home. They must not be allowed to bark all night or cause a nuisance to your neighbors. They must also be on a leash at all times when not in a contained environment. It is also the pet owner's responsibility to keep ALL areas of the community FREE from pet debris when walking your pets. Please remember that cats must also be confined.

FITNESS CENTER HOURS

The Legends Ranch Fitness Center hours are:
4AM - 10PM, 7 days a week

REMINDER:

DO NOT REMOVE WEIGHTS FROM FITNESS CENTER

If you remove weights from the community weight room, the POA of Legends Ranch will have to replace the weights at an additional expense to the Association. They are only for use INSIDE the fitness center.

UPDATE ON STOP LIGHT

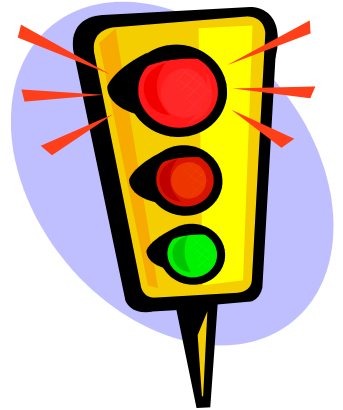
at front of Legends Ranch Community

A traffic survey has been completed by the county and a light has been approved for placement at the front of the community, by Precinct 3 of the county commissioner's office. The design engineer has almost completed the design plans for the intersection.

Legends Ranch is 7th in line behind other local intersections being addressed. Due to our place on the list and the time it takes to have the funding certified, the installation may not be completed for another year to year and a half.

Contacting your county commissioner's office might help expedite the process. Below is the address and fax for contacting Ed Chance, your county commissioner.

County Commissioner Precinct
3
Ed Chance
1130 Pruitt Road
Spring, Texas 77380
Phone: 936-539-7817 or 281-
367-3977
Fax: 281-298-7321



LOOKING FOR POA

of Legends Ranch budgets, ARC guidelines and ACC applications?

Go to www.canyongate.com/residents/lr and click on "documents and forms" on the left hand menu.

Questions? Call PCMI at 281-870-0585.



One Stop Auto Repair Since 1971



All of our Employees are Trained
in Customer Satisfaction!

Spring/Woodlands Conroe
281-367-3535 936-756-8500

24 HOUR TOWING SERVICE

Complete Auto Repairs
Rental Cars Available
Collision Center
Transmissions and MORE!

29707 W. Hawthorne
www.milsteadautomotive.com

Shuttle
Service
Available!

AUTUMNGROVE

Specialized
• Alzheimer's care is not what we do, it's ALL we do
• 100% focus is memory care to provide THE BEST care
• Licensed specifically for Alzheimer's/dementia care

Simple
• Limited to 16 private rooms
• One monthly price, no worries about levels of care

Our purpose is to honor our residents and those who love and care for them.

Atascocita
Lic. # 104020
Katy
Lic. #102463

Champions
Lic. #103059
Kingwood
License pending

Copperfield/CyFair
Lic. #102347
Pearland
Lic. #104029

Heights
License pending
The Woodlands
Lic. #103125

Call 832-349-5735 or 713-870-1393 www.AutumnGroveCottage.com



2009 Legends Ranch Splashpad & Pool Schedule

CLUBHOUSE POOL

The Clubhouse pool will be open on a trial basis October 10, 2009 thru May 1, 2010 from 5:00AM-10:00AM (Closed Monday's). Access will be limited to residents over the age of 18 for aquatic exercise & lap swimming only. No lifeguards will be on duty and it is SWIM AT YOUR OWN RISK. If all rules and regulations are not adhered to, this privilege may be suspended at any time. In order to use the pool during the swim at your own risk hours, you must review, complete and submit a legal waiver. The legal waiver can be found on the intranet at www.canyongate.com/residents/lr or at the Clubhouse office. All signed legal waivers must be submitted to onsite staff in order to gain access by handscan to the pool. Access will be available by handscan only to limit access (access cards will not be activated during this time frame). The Gate Attendant will be monitoring cameras at all times and has orders to call the constable if any behavior that is considered inappropriate is observed. All pool gates must be closed securely at all times and upon entering or exiting the pool area. The Clubhouse restrooms will not be available during these hours.

SPLASHPAD

"PAD" AT SPLASHPAD will be open weather permitting during onsite office hours only. For more information on SplashPad hours, please call 281-681-9750. The SplashPad pool is closed until May 2010.

SplashPad POOL is CLOSED.

****Schedule subject to change, weather and other factors could cause changes to this schedule without notice.*

Advertise YOUR business
to YOUR neighbors for
less than 8¢ per home.

Effective Advertising, Done Right.

Call today to Reserve your space.

Peel, Inc.
COMMUNITY NEWSLETTERS

1-888-687-6444
www.PEELinc.com

LR

LEGENDS RANCH



Holiday Recipe

Berry Mocha Fudge



Ingredients

- 1/4 lb. butter
- 12 oz. can of evaporated milk
- 3 1/2 Cups of sugar
- 1 heaping tablespoon of INSTANT COFFEE
- 1 tsp. Vanilla
- 10 oz. Hershey's Raspberry chocolate chips
- 7 oz. Marshmallow cream
- 2 oz. bittersweet chocolate

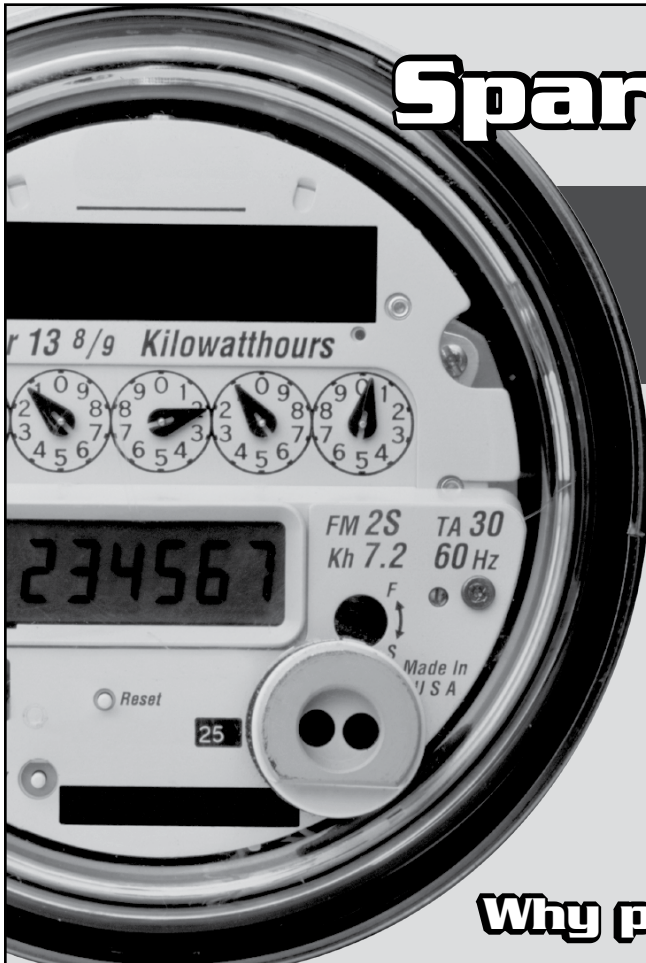
Method:

In a heavy saucepan melt the butter. Add evaporated milk, sugar, and coffee. Bring to a rolling boil, stirring constantly until the temperature reaches 235 degrees. Remove from heat and add raspberry chocolate chips and the bittersweet chocolate. Stir the mixture until all ingredients are melted. Add the marshmallow crème and stir until blended. Stir in the vanilla. Pour into a lightly greased 9 X 13 inch pan. Cut in bite sized squared when cooled.

Association's Management Company Contact Information

Planned Community Management (PCMI) has been contracted by the Board of Directors to manage the day-to-day activities of the community. In order to contact the community's Board of Directors, or if residents have concerns, questions about their account, or deed restriction violations to report, please put the information in writing and send via e-mail to Brandi Leal at bleal@stes.com or call PCMI at 281-870-0585.

For all Canyon Gate communities on-site managers are available to assist residents. For Legends Ranch, Denise is at the Clubhouse at 281-681-9750, and the SplashPad office can be reached at 281-419-2130. Please feel free to visit and they will be pleased to assist you with ARC forms, enrollment for electronic entry and to provide you with a copy of the calendar of events.



Spark Power Bank

**We Challenge What
You Pay For Electricity**

SIGN-UP ONLINE TODAY!

WWW.SPARKPOWERBANK.COM

Please choose "Newsletter Ad" as your referral

I'm Texas Energy Analyst Alan Lammey. Maybe you've heard me on the radio talking about the market forces that drive energy prices. I'm here to tell you that you're not stuck paying those high prices to big electric companies anymore!

Why pay more than you have to?

TRASH REMINDERS

Regular Trash Pick Up: Wednesdays & Saturdays
Heavy Trash Pick Up Saturdays on curb by 7AM. Definition of "Heavy Trash": 2 bulky items, like furniture or appliances
What will NOT BE ACCEPTED: remodeling or construction debris, fencing, carpet or vehicle parts.



LEGENDS RANCH RECYCLING

RECYCLING pick up days - Wednesdays

TRASH pick up days - Wednesdays and Saturdays

The following are products you can recycle by placing in your green tub:

Newspaper/paper – this includes magazines, junk mail, telephone books and cardboard. If it will tear or rip by hand WM will take it. NO PIZZA BOXES or paper products with food residue on them.

Bi-metal (tin) and Aluminum Cans – Food/beverage cans only. NO foil, pie tins, aerosol cans or scrap metal.

Plastic (codes 1 & 2) – Plastic containers coded on the bottom with a 1 or 2 inside a recycling triangle – this includes soft drink bottles and milk jugs. NO other plastics will be accepted. All lids, caps and rings must be removed. It is not necessary to remove labels.

For additional recycling info: www.wm.com, www.thinkgreen.com, www.earth911.org

Waste Management began recycling service to your community in December of 2008.

Recycling is a service to your community, offered through MUD #89. For questions, please contact Waste Management direct at 713-686-6666.

Unwanted Solicitors:

NO SOLICITING signs are posted through out the entrances of community. If this continues to be a growing issue at your residence and you would like to place a NO SOLICITING sign in your yard you may certainly do so. Please be sure that the sign is placed by your front door and you place only place one (1) sign at your home.

If you feel in danger and think the solicitor will be in the community long enough to call the authorities out we suggest you call the local Police Department.

At no time will any source be allowed to use the Legends Ranch Community Newsletter contents, or loan said contents, to others in anyway, shape or form, nor in any media, website, print, film, e-mail, electrostatic copy, fax, or etc. for the purpose of solicitation, commercial use, or any use for profit, political campaigns, or other self amplification, under penalty of law without written or expressed permission from the Legends Ranch Property Owners Association and Peel, Inc. The information in the newsletter is exclusively for the private use of Legends Ranch residents only.

DISCLAIMER: Articles and ads in this newsletter express the opinions of their authors and do not necessarily reflect the opinions of Peel, Inc. or its employees. Peel, Inc. is not responsible for the accuracy of any facts stated in articles submitted by others. The publisher also assumes no responsibility for the advertising content with this publication. All warranties and representations made in the advertising content are solely that of the advertiser and any such claims regarding its content should be taken up with the advertiser.

* The publisher assumes no liability with regard to its advertisers for misprints or failure to place advertising in this publication except for the actual cost of such advertising.

* Although every effort is taken to avoid mistakes and/or misprints, the publisher assumes no responsibility for any errors of information or typographical mistakes, except as limited to the cost of advertising as stated above or in the case of misinformation, a printed retraction/correction.

* Under no circumstances shall the publisher be held liable for incidental or consequential damages, inconvenience, loss of business or services, or any other liabilities from failure to publish, or from failure to publish in a timely manner, except as limited to liabilities stated above.

CertaPro Painters®
★ ★ ★ ★ ★

**FREE Color Consultation
with any interior or
exterior painting job.**

281-465-8705

832-563-8797

800-GO-CERTA
(462-3782)



www.certapro.com

Inspiring families through
love & education



FREE ENROLLMENT

Full time enrollments, at this location only. Offer good through December 31, 2009.

Preschool & Pre-K 3 - 5 years

Our preschool program ensures school readiness. But never fear, even with Science, Spanish, and Computers there is still plenty of time for music, tumbling, cooking and plain old fun.

- **INCLUDED IN TUITION:**
age appropriate curriculum, sign language, Spanish, science, computers, music, tumbling, and cooking.
- Separate preschool & pre-K playgrounds
- Onsite events & field trips
- Full-motion **LIVE INTERNET CAMERA** in every room
- Breakfast, AM snack, lunch and PM snacks provided

Before & After School Care Kindergarten - 12 years

Whether they spend their time in the homework room, on the computers, or playing with friends, your child will never be bored and always well watched over.

- **HOMEWORK TUTORS, COMPUTERS & DEDICATED HOMEWORK AREA**
- School-age playground
- Onsite events & field trips during school holidays
- Full-motion **LIVE INTERNET CAMERA** in every room
- Transportation to and from local schools
- Afternoon snacks provided



Monday - Friday
6:00am - 6:30pm

Legends

29910 Aldine Westfield
at Rayford

281.363.2227
www.krkllegends.com

The Woodlands

320 Valleywood
(behind Carrabba's)

281.362.9222
www.kidsrkids7tx.com