

THE Current

SHADOW CREEK RANCH

December 2009

Official Publication of the Shadow Creek Ranch HOA

Volume 1, Issue 12

HAVE A HEALTHY HOLIDAY SEASON and a Happy New Year!

Immediately after Halloween, people begin to focus on holiday shopping, decorating, baking and parties, parties, parties! Between office parties, happy hours, school functions for the kids, in-store food samples and large family gatherings, it is not surprising that the average American gains anywhere from two to seven pounds (or more!) between Thanksgiving and New Years!

This year, you don't have to wait until you make your 2010 New Year's resolutions to make some changes. Here are some helpful tips to help you avoid packing on the pounds this holiday season:

- You don't have to go to every party or dinner!
- Don't show up to a party hungry
- Size up the buffet before you grab a plate
 - Decide what you really want to eat ahead of time
 - Limit yourself to one trip to the buffet
 - Fill your plate three-quarters full with fruits and veggies first
 - Limit your alcohol intake

- Don't stand near the buffet table
- Eat with your non-dominant hand
- Chew gum when not eating
- Dance, talk and socialize—it's not all about the food!

The small appetizers typically served at parties are packed with a lot of calories. Here are some examples of popular party foods, the amount of calories they contain, and how much activity would be needed to burn off those calories:

- Two hot chicken wings with two tablespoons of blue cheese dressing contain 550 calories, and it would take a 150 pound person over two hours of vigorous housework to work off those calories.
- One-half of a cup of mixed nuts contains 400 calories, and it would take a 150 pound person over one-and-a-half hours of walking to burn off those calories.
- One ounce of cheese served with one ounce of crackers contains 225 calories and it would take a 150 pound person almost 45 minutes of fast dancing to burn off those calories.

There are some healthier options that you should choose or serve on a buffet line at your next holiday party:

- Boiled shrimp with cocktail sauce

(Continued on Page 3)

Shadow Creek Ranch Stork Report

BABY GIRL

Parents: Sagar & Kveta Shinde
Born: 09/27/09 at 8:30 pm
6lbs 15 oz, 19.75 ins
Proud Sister: Aarohee Shinde

ROBERT LANE BARRON BOUGHTON

Born: 10/26/09 at 9:18 a.m.
9 lbs. 2 oz. 20 inches
Proud Parents:
Robert & Amy Boughton
Proud Big Sister:
Brooke Elizabeth Boughton

MILES HOSEA ALLEN

Born: 9/22/09 at 2:55pm
8lbs 7oz, 20inches long
Proud Parents:
Michael & Tassandra Allen
Proud Sister: Ariana



IMPORTANT NUMBERS

EMERGENCY NUMBERS

EMERGENCY	911
Fire.....	911
Ambulance	911
Sheriff – Non-Emergency.....	281-331-9000

SCHOOLS

Mary Marek Elementary	281-245-3232
Laura Ingalls Wilder Elementary	281-245-3090
Manvel Junior High	281-331-1416
Alvin Senior High	281-331-8151
Manvel High School	281-245-2235
Alvin ISD Administration	281-338-1130
Alvin ISD Transportation	281-331-0960

UTILITIES

Electricity - Reliant Energy.....	713-207-7777
Gas - Center Point	713-659-2111
Trash Removal - City of Pearland	281-652-1600

OTHER NUMBERS

Pearland Post Office	281-485-2132
Poison Control.....	800-764-7661
Brazoria County Health Department	979-864-1484
Animal Control.....	281-756-2265

CITY

Pearland City Hall.....	281-652-1600
Pearland Utility Billing - Water Dept.	281-652-1603
Pearland Animal Control.....	281-652-1970
Pearland Police Dept - Non-Emergency	281-652-1100
Pearland Public Works.....	281-652-1900

NEWSLETTER

Articles	shadowcreekranch@peelinc.com
Publisher	
Peel, Inc.	1-888-687-6444
Advertising.....	1-888-687-6444

MGMT COMPANY

ASSOCIATION MANAGEMENT, INC.

Community Manager	
Maria Southall-Shaw.....	713-332-4675
On-Site Manager	
Kerry Holmes	713-436-4563
Assistant On-Site Manager	
Kimberly Cartwright.....	713-436-4563
Service Specialist	
Carmen Sierra.....	713-332-4685

www.AMITX.com

Table of Contents

FROM THE ASSOCIATION

What You Need to Know Before Adopting a Pet	4
New Onsite Manager	6

AROUND SHADOW CREEK RANCH

Community Section News	6-9
Enclave Lake Estates.....	6
Kelsey Pointe	7
Oakwood Terrace.....	7
Osprey Pointe.....	8
Sagecrest Pointe	8
Silver Leaf Glen	9
Sunrise Creek	9
Social Club News	10-11
Salsa Club	10
Discovery Soccer Camp.....	10
SCR Youth Soccer Club	11
Teenage Job Seekers.....	16

PEARLAND NEWS

Brazoria County Municipal Utility District No.26	13
City Offers \$1000 Vehicle Arson Reward	14
2009 Hometown Christmas Festival.....	15
Ice Skating at Pearland Town Center	15
"A Journey in Time...100 Years Past"	15

Advertising Information

Please support the businesses that advertise in The Current. If you would like to support the newsletter by advertising, please contact our sales office at 1-888-687-6444 or advertising@peelinc.com. The advertising deadline is the 8th of each month for the following issue.

Shadow Creek Ranch Stork Report

Congratulations!
Let us help celebrate...
email info on the arrival
of your little one to
shadowcreekranch@peelinc.com.

FROM THE ASSOCIATION

Have a Healthy Holiday Season - (Continued from Cover Page)

- Bruschetta (tomato appetizer served with small pieces of toasted bread)
- Rather than the standard carrot and celery sticks, try an Asian theme with baby corn, snow peas and red pepper slices served with low-fat sesame or ginger dressing.
- Another option is to replace the standard chips and salsa with a mix of corn, black beans and salsa scooped inside of a bell pepper half.
- For a tasty dessert, make an eggnog flavored dip to serve with fruit, angel food cake or small gingerbread cookies.

In addition to choosing healthier options, try to eat normally throughout the day. Don't try to starve yourself to "save up" calories before a party or dinner. Also, be sure to exercise regularly and get enough sleep. Most importantly, put the emphasis on spending time with family and friends, not on the food!

Thinking of giving cookies, fudge or a box of chocolates as a holiday gift? This year, try to give your family, friends and co-workers a healthier gift, such as a cookbook with quick and healthy recipes, sign them up for a cooking class or fill a recipe box with some of your own healthy recipes. You can also give gifts that encourage outdoor activity. Purchase pedometers, compasses or other gear that will encourage those you care about to be outside and active, they'll thank you later! - **Tarie Beldin**

THE CURRENT

Would Like to Make a Correction

An article printed in the October and November issues was information incorrectly provided. The information was not titled correctly and should have read "Discovery Soccer Camp." The Discovery Soccer Camp, which is not affiliated with the Shadow Creek Youth Soccer Club. Please accept our apologies for any confusion these articles may have caused.

**Advertise
Your Business Here
888-687-6444**

When You're Ready to Sell Call The Experts at the Front Door of YOUR Community!



Cathy Spacek

832-643-7768

cathy@cathyspacek.com

Top Producer &
Resale Specialist

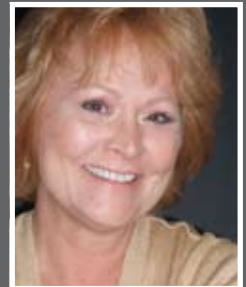
★ ★ Platinum
2005 2006 Producer

The Original Shadow Creek Ranch Realtors
Specializing in Your Community

Maximum Exposure of Your Listing
*Located in the SCR Visitors Center, and Welcoming
More Walkin Buyers Than Any Other
Real Estate Company*

**Even More Exposure with Our Exclusive
Live Online Chat**

*Reaching Out to Buyers Worldwide...
24 Hours a Day, 7 Days a Week*



Ricki Stockwell

713-306-3773

redrock811@aol.com

SCR Top Producer

Platinum ★ ★ ★
Producer 2004 2005 2006
★ ★ ★
2007 2008 2009

FROM THE ASSOCIATION

WHAT YOU NEED TO KNOW *Before Adopting a Pet*

Pet adoption serves the dual purpose of giving a pet in need a better life and providing your family with endless joy. However, responsible and successful pet adoption entails research and careful planning by family members BEFORE visiting the local shelter. Here are a few tips to ensure that you choose well.



1. Consider a few important questions: Why do I want a new pet? Do I have the time and energy to dedicate to a pet? Can I afford the costs of pet ownership, including vet care, licensing, training classes, spaying or neutering, grooming, toys, food? Do I live in a suitable environment? Can I provide enough exercise? What is the right food? What if I adopt a pet with chronic health problems? Am I prepared to care for and love my new pet for its entire lifetime no matter what?
2. It can be challenging to go to a shelter, because it pulls at your heartstrings; you want to rescue every lost soul in need. But, be brave. Go with a firm idea of what breed, size, age and personality is best suited to your family's needs and lifestyle. Write down what you are looking for and take it with you. This objective list will remind you to exercise good judgment when you fall in love with a pair of sad puppy eyes. Remember that if your needs and the dog's needs clash, it's not a match; it's a recipe for failure – for pup as well as you and your family. Most important for the lucky pet you take home is that emotions do not make the entire decision.
4. When looking for your new forever friend, pick out several candidates and ask the shelter if it can provide space for you to spend 30 minutes with each separately. Get to know the dog, handle it, and observe its response to you, family members, other dogs, and resources like toys and food. Ask if a behaviorist has evaluated the dog, and if so, can you speak to the behaviorist or read

the report. Find out everything you can from the dog's current caretakers; then consider whether its personality is a fit.

5. If you choose to adopt a pet with personality issues, be ready to spend the time, money and effort necessary for rehabilitation. This can be a daunting task. Get advice from the shelter experts on what's involved before making this kind of commitment.

6. Be patient with any new pet you bring into your home; it's going to take time regardless of background. Set aside at least an entire weekend to making your new best friend feel welcome, comfortable and safe.

7. Be ready to get trained! You and your new pet will fully bond when you learn to communicate. Consider enrolling your new pet in a training course to get the relationship off to a positive start. If you work all day, you may want to check out local doggie daycare facilities, so that pup gets lots of social play, and stays active all day...two requirements for happy dogs. After a day of doggie daycare, you are guaranteed to enjoy a quiet evening with your new best friend. What could be better? - **Deborah Smith**

Classified Ads

Personal classifieds (one time sell items, such as a used bike...) run at no charge to Shadow Creek Ranch residents, limit 30 words, please e-mail shadowcreekbranch@peelinc.com.

Business classifieds (offering a service or product line for profit) are \$50, limit 40 words, please contact Peel, Inc. Sales Office at 1-888-687-6444 or advertising@peelinc.com.

AUTUMNGROVE
Cottage
Specialized
• Alzheimer's care is not what we do, it's ALL we do
• 100% focus is memory care to provide THE BEST care
• Licensed specifically for Alzheimer's/dementia care
Simple
• Limited to 16 private rooms
• One monthly price, no worries about levels of care
Our purpose is to honor our residents and those who love and care for them.

Specialized Alzheimer's Care
A black and white photograph of a woman with short dark hair, smiling and holding a small, light-colored dog. The woman is looking down at the dog with a gentle expression.

Atascocita Lic. # 104020 Katy Lic. #102463	Champions Lic. #103059 Kingwood License pending	Copperfield/CyFair Lic. #102347 Pearland Lic. #104029	Heights License pending The Woodlands Lic. #103125
---	--	--	---

Call 832-349-5735 or 713-870-1393 www.AutumnGroveCottage.com

LeBlanc
A logo for LeBlanc Insurance Agency featuring a large, stylized fleur-de-lis in the center. The words "LeBlanc" are written in a script font above the fleur-de-lis, and "Insurance Agency" is written in a bold, sans-serif font below it.
Insurance Agency

OBJECTIVE: Personal Service
11711 Shadow Creek Pkwy, #145
WELCOME!
713.436.4707
www.LeBlancInsuranceAgency.com

A black and white portrait of a man with short dark hair, wearing a dark suit, white shirt, and patterned tie. He is smiling at the camera.
Personal & Business Insurance

LOOK GOOD NAKED

Feel good all the time with Body Evolution Fitness Programs!

free!

Mention this ad and
receive 2 sessions of
free personal training
& 1 month of boot camp
classes!

Body Evolution

has a special for you!

Loose weight and feel great,

get stronger and live longer!

We introduce real people to healthier

happier, more fit lifestyles for *only \$98!*



BEFORE



AFTER

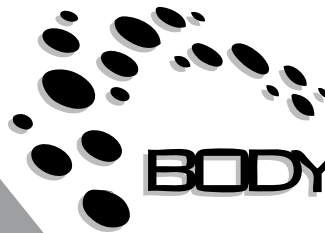
Body Evolution owner
Shawn Swearingen - 38yrs



Elizabeth G.
(Shadow
Creek
Ranch Resident)
90lbs lost
and still going!



Joe K.
(Pearland Resident)
35lbs of fat lost
and 15lbs of
muscle gained!



BODY EVOLUTION

12006 Shadow Creek Pkwy
Pearland, TX 77584

713-314-0090

www.bodyevolutionnow.com

AROUND SHADOW CREEK RANCH

SHADOW CREEK RANCH

Welcomes New Onsite Manager

Shadow Creek Ranch proudly welcomes our new Onsite Manager, Kerry Holmes. Kerry brings a wealth of experience to our neighborhoods. She has a proven track record of successful Association management. Please stop by and meet Kerry and the new Shadow Creek office located at 12234 Shadow Creek Parkway, Bldg 3, Suite 114. Our office hours are 8 a.m. - 5 p.m. Her direct line is 713-436-4563. We are located in the Condos behind Sherwin Williams.

ENCLAVE LAKE

Community Section News

Enclave Lake Estates residents, as I strolled through our neighbor a few weekends ago handing out flyers announcing my position as your representative, I noticed two things, 1) we have a beautiful neighborhood with nicely manicured lawns and well kept homes and 2) nobody likes having strangers walk the streets to leave paper flyers on their doors. These flyers are a nuisance and usually are left to litter our well kept yards. I must admit, I was one of those people that Saturday afternoon as I left a note announcing my new role. I hope you can find it in hearts to forgive me.

As I was talking to one of the residents, we discussed the problem of strangers going door to door leaving leaflets and such so I decided to call the Pearland Police Department to find out what could be done. The officer I spoke to indicated that individuals that knock on your door to solicit must have a permit to do so. Anyone caught without a permit will receive a citation, so ask to see the permit the next time a solicitor knocks on your door. If he doesn't have one, report him to the authorities immediately.

However, those that leave flyers or business cards on your door are not breaking the law unless they 1) violate a no trespassing sign posted in your yard or 2) leave flyers that are not physically attached to your door to keep them from blowing into the streets. If you find someone violating these rules, call the authorities for an officer to be dispatched.

We're having a neighborhood gathering soon so if you would like to an invitation feel free to email Travis de Benedetto at dageaux@sbcglobal.net subject: Enclave

I hope each and every one of you have a safe and happy holiday season.

Emergency Room Open 24 Hours

READY OR NOT ... WE ARE.™

Texas Emergency Care Center is open **24 hours a day**. We're committed to delivering comprehensive medical services in a comfortable environment with little to no wait time – day or night.

You'll experience:

- A full-service facility equipped with a complete laboratory, radiology, CT scanning and cardiac monitoring.
- Prompt, friendly and caring service.
- Quality face time with a physician who is Board Certified in Emergency Medicine.

After all, emergencies just can't wait.

281-648-9113

All private insurance accepted.



TEXAS
EMERGENCY CARE
CENTER™
AT PEARLAND



FM 518 at Dixie Farm Road
3115 Dixie Farm Road, Suite 107

www.txercare.com

Accredited by the Joint Commission of
Accreditation of Healthcare Organizations
for our commitment to excellence.



AROUND SHADOW CREEK RANCH

KELSEY POINTE

Community Section News

Hi Neighbors –

It was great to see so many of you outside on Halloween. Special thanks to Karl and Sheila Fischer for their great Halloween Open House. It was a fun time and great to see neighbors getting together. We need your e-mail addresses to keep you informed about special events, so please send me your information if we don't have it! My e-mail address is larryandcarey-kelseypointe@yahoo.com. We have also put together a neighborhood directory and photo directory. We would love to have every home represented! I can send our roving photographer (my husband) over to take your picture, or you can e-mail us a family picture and we will update the directory and send it out to everyone.

I hope everyone had a wonderful Thanksgiving – we all have so much to be thankful for.

*Merry Christmas and Happy Holidays to all,
Carey Stanteen*

OAKWOOD TERRACE

Community Section News

Hello Neighbors,

My name is Jessica Harris, and I am your Sectional Representative for Oakwood Terrace. I had the pleasure of meeting some of y'all at our NNO. My goal as your Sectional Representative is to help make Oakwood Terrace a safe community to raise our families in. I am looking for fellow neighbors to help achieve this goal. I believe neighbors should watch out for each other, the best way to facilitate this is for neighbors to get to know one another. This will be the purpose for our various activities. Please contact me with any ideas or activities that you might have in mind.

I look forward to working with y'all to build a strong community bond. You can reach me by email jaynjessica@sbcglobal.net or by phone 713.436.1662.

*Working with you,
Jessica L. Harris*



**RECYCLE WITH
PAPER RETRIEVER
TODAY TO HELP
EARN MONEY
FOR YOUR LOCAL
ORGANIZATIONS!**

Bringing your newspaper, magazines, catalogs, mail and household papers to your nearest Green and Yellow bin is a free and easy way to help local organizations earn extra money.

This money earned is used to fund community based programs that benefit schools, youth groups and charities. Look for the green and yellow bins and make recycling more rewarding!

PaperRetriever®
RECYCLING

Find a Bin near you at
www.PaperRetriever.com

AROUND SHADOW CREEK RANCH

OSPREY POINTE

Community Section News

Thank you to everyone who made this a special Halloween for our children. The beautiful weather brought out many trick-or-treaters. Several neighbors had great decorations, which added to the fun. A big thank you to Sally & Wendy for their fantastic Halloween display at the entrance of our neighborhood. We are so fortunate to have such a unique and one of a kind haunted house on our block!

We have two new neighbors to welcome. Huizhe Li & Yongkun Wei and their daughter moved in earlier this summer. Also, Thomas & Jolly Mathew and their two sons just joined Osprey Pointe in October. Welcome to the neighborhood!

Please contact me with any news to share: Sue Roberts, sueroberts123@gmail.com.

SAGE CREST POINTE

Community Section News

Hi there neighbor,

My name is LeAnne Plaisance and I am excited to be the new sectional representative for Sagecrest Pointe. My husband Jeff and I have lived in this section of Shadow Creek Ranch for about 2 years now, and have loved every minute of it.

It is my job to keep up communications between our neighborhood and the HOA; to act as a liaison to continue making this section a great place to live. I would also like to get everyone's opinions and thoughts regarding a block party. Getting to know each other, looking out for one another, and helping each other where we can, not only builds strong fellowships, but a stronger and safer community.

I have set up an email account for our section so that we may keep in touch and easily share questions, concerns, announcements, etc. Please feel free to contact me at sagecrestpointe@yahoo.com anytime. Also, be sure to send me your names and email information so that I can better keep you informed of important neighborhood information.

Have a fantastic holiday season!

DO YOU HAVE REASON

To Celebrate?

We want to hear from you! Email shadowcreekranch@peelinc.com to let the community know!



Spark Power Bank

**We Challenge What
You Pay For Electricity**

SIGN-UP ONLINE TODAY!

WWW.SPARKPOWERBANK.COM

Please choose "Newsletter Ad" as your referral

I'm Texas Energy Analyst Alan Lammey. Maybe you've heard me on the radio talking about the market forces that drive energy prices. I'm here to tell you that you're not stuck paying those high prices to big electric companies anymore!

Why pay more than you have to?

AROUND SHADOW CREEK RANCH

SILVER LEAF GLEN

Community Section News

Hope everyone had a fun and safe Halloween. We had a great time at the Fall Festival down at Shepherd of the Heart Church. Pumpkins, costumes, crafts and food....it was a fun afternoon.

Still, I have more bad news to report, we had another break in a couple of weeks ago. It was on a Monday afternoon, they smashed the back window and crawled through taking electronics and left through the back door. Our neighbor came home to find his back door wide open, the window smashed and his belongings gone. I don't think any of want to face this.

Set your alarms, lock things up, report anything suspicious to your neighbors and the police. It is so important that we all work together to look out for our property and our families. If you haven't met your neighbors, I urge you to go knock on the door and say Hello. I will be emailing the list of contact information that I have for everyone this week. Remember the holidays are fast approaching and the world tends to go a little crazy at this time, so be safe and smart!

Please forward your good news to me as well as concerns, questions and information! Elizabeth - silverleafglen@gmail.com

SUNRISE CREEK

Community Section News

Hi my name is Bao Bui

I have been a resident of Shadow Creek Ranch since December 2003. I have a wonderful wife Kim, daughter Jennie, son Michael and four legged friends Oreo and Barley. After speaking with AMI, I am very exciting and honor to be the Sectional Representative for Sunrise Creek Community. This is a way for us to come together as neighbors, watch out for one another and more efficiently voice and communicate our concerns, request with the HOA and each other. I grew up from the community, when neighbors knew one another well and I am still believing that the more we see and talk to each others, the more friendly and security sense will be developed within Sunrise Creek residents.

Texas weather is getting cooler and better in the afternoon. This is a perfect time to come out and stroll through the neighborhood meet and say hello to your neighbors.

In the mean time, please e-mail me at baokimbui@yahoo.com, so I can add you to our e-mail distribution list and I hope to start to develop a data base for Sunrise Creek Community related information, announcement and other community events.

Regards, Bao Bui



Housework won't kill you, but why risk it. Let our gloves do your dirty work!

Free Gift With Purchase
Purchase a gift certificate & we'll add on oven or refrigerator cleaning
FREE!
\$20 Value
Gift certificates available in any amount you choose.
Minimum purchase required

Christmas Special
\$30 Off
Detail Cleaning
This Month Only
With SAVE Coupon Only. Expires 1/5/10.

25% Off
Your Service When You Refer Us!

*Some restrictions apply. Call for details. With SAVE Coupon Only. Expires 1/5/10

- ✓ Weekly, Bi-Weekly, Monthly and One-Time Services
- ✓ Homes and Offices
- ✓ Detail Services
- ✓ Fully Trained Staff
- ✓ Move In/Outs
- ✓ Bonded and Insured
- ✓ All Equipment and Supplies Provided

www.whiteglovescleansvcs.com
Not affiliated with any other White Gloves Cleaning.

❖ *White Gloves Kleaning Services* ❖

Call **281-99-SLIME** for a Free Phone Estimate!
(281) 997-5463



Experience Counts



Standing: Orisha Williams; Seated: Dora Bonner

Divorce/Child Custody • Civil Trials
Probate • CPS Services • Support & Visitation
Accidents & Injuries • Real Estate

Dora L. Bonner
Attorney at Law

979-265-1770

704 W. Plantation • Clute

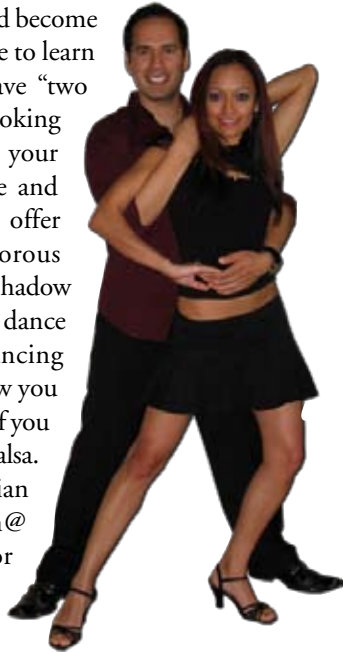
Not certified by the Texas Board of Legal Specialization

AROUND SHADOW CREEK RANCH

SHADOW CREEK RANCH

Salsa Club (aka SCR Salseros)

Join the Latin dance revolution and become part of SCR Salseros! Would you like to learn how to dance Salsa? Think you have "two left feet" or no rhythm? Are you looking for a fun, new activity for you and your significant other? Or are you single and wanting to meet new people? We offer comprehensive, patient and humorous instruction in Latin dancing here in Shadow Creek Ranch, so you can learn to dance and have a fabulous time! No dancing experience or partners required. Now you can even carry your lessons with you if you own an iPhone. Visit <http://www.scrsalsa.com> For info, please contact Christian Gutierrez via email at christian@latindancefactory.com (preferred) or via phone at 832-693-5842 for more information.



DISCOVERY

Soccer Camp

Discovery Soccer Camp soon begins its fourth evening camp for children ages 4-8, continuing to offer high quality coaching and skills development by nationally licensed coach Mike Garbade. The camp uses the innovative approach of 'Guided Discovery', where the kids are guided with the right questions and encouragement to 'discover' their skills in a fun and educational format where the learning is more rapid and more easily retained. DSC was proud of the progress showed by all previous campers in their various leagues this past season and looks forward to continuing the tradition of fun and learning! Camps are provided to not conflict with any of the games of the local soccer clubs, and private instruction is also available. For information on camp dates and times please visit www.discoverysoccercamp.com, or email coachmike@discoverysoccercamp.com.



Bashans Painting & Home Repair

Commercial/Residential
Free Estimates

281-347-6702



281-731-3383 cell



- Interior & Exterior Painting
- Hardi Plank Installation
- Wood Replacement
- Sheetrock Repair
- Interior Carpentry
- Cabinet Painting
- Wallpaper Removal and Texturizing
- Pressure Washing
- Fence Repair/Replacement
- Garage Floor Epoxy
- Custom Staining
- Roofing
- Gutter Repair/Replacement
- Faux Painting

References Available • Fully Insured
NO PAYMENT UNTIL COMPLETION
bashanspainting@earthlink.net

TRUST - COMMITMENT - SERVICE
Every step of the way...

TOGETHER, WE CAN WIN!
Call me today!

Your Home Coach

832-428-6207

RE/MAX Top Realty



Do you want to prevent FORECLOSURE?
Call me for a confidential consultation.



CERTIFIED DISTRESSED PROPERTY EXPERT®

AROUND SHADOW CREEK RANCH

SHADOW CREEK RANCH

Soccer Club

Registration opens December 1 for Shadow Creek Soccer Club's Spring season. Ages 4-9. Register at www.shadowcreeksoccer.org. With a fun first attitude, the soccer club is guaranteed as a great outlet for all your child's energy. Parents coach and decide practice times. The club offers a free coaching clinic and DVD to help you with creativity and basics of coaching. Games are Saturday mornings. Although the club is increasing in size with over 300 players in its 3rd year, older age groups will be added slowly. Ages 10-11 will be added Fall 2011. The club is now an official member of the Houston Youth Soccer Association and offers free academy training for players wanting extra skills development and competitive tournament play. Visit www.shadowcreeksoccer.org for more information and registration.



Staring At A Deadline For Using Your Health Benefits?

If you participate in a Flexible Spending or Healthcare Savings Account, you can use your benefits for eye care services and products including:

*Eye Health Examination • Contact Lenses • Eyeglasses • Computer Glasses
Prescription Sunglasses • Laser Vision Correction*



Let us show you how to get most from your benefits plan, especially if your plan requires that you use your benefits by December 31.

Schedule Your Appointment Now!

Vision Source!
Family Eye Care

Dipak R. Kalani, O.D.

713/436-7544

11601 Shadow Creek Pkwy
Suite 113
Pearland, Texas 77584

www.visionsource-shadowcreek.com



**COMPLETE PAIR
of GLASSES**

50% OFF

**EXAM, GLASSES
& CONTACTS**

\$199

Save 50% on your second complete pair of eyeglasses (frames and lenses) when you purchase a complete pair of glasses. Must present this coupon at the time of order. May not be combined with any other offer or insurance plan. See associate for details.

Offer includes exam, 6 pair clear, spherical disposable contact lenses and one pair of clear, single vision CR-39 lenses with frames from our special collection. Must present this coupon at the time of order. May not be combined with any other offer or insurance plan. See associate for details.

Comprehensive Eye Health Exams • Lasik & Cataract Surgery Consultation

GREAT BIG DEAL!

*Get the wick
you want*



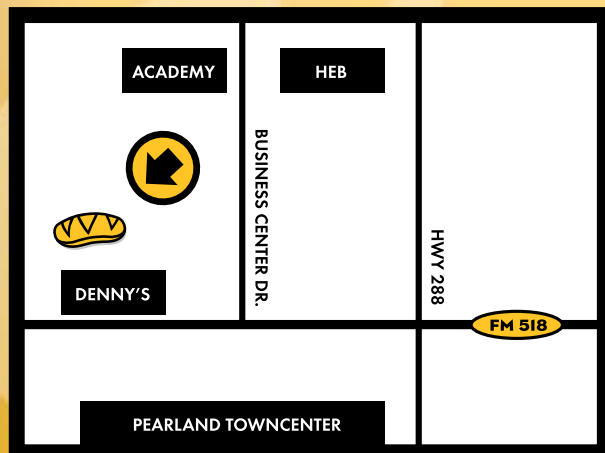
*Choose 1 of 5
great offers
when you purchase
a wick and
bring in this flyer.*

THIS OFFER IS GOOD ONLY AT THE
PEARLAND
WHICH WICH LOCATION

PEARLAND

Hwy 518 and Hwy 288
Behind Denny's

713.433.9424



whichwich.com

- ☐ \$2 off a combo
- ☐ Free drink
- ☐ Free cookie
- ☐ Free chip & drink
- ☐ 2 for 1 shakes

Offer valid now through December 31, 2009.
One offer per bag per visit.

This coupon may be used up to 5 times until all offers have been used.

BRAZORIA COUNTY

Municipal Utility District No. 26

We hope all residents of Shadow Creek Ranch have noticed the construction of new homes, the extension and improvements of Broadway, and new commercial businesses in and around our neighborhood. The progress and growth of this infrastructure brings value to our community. The Brazoria County Appraisal District has released the 2009 Certified Value for Brazoria County Municipal Utility District No. 26 (the "District") and we are excited to report that our District is valued at \$702,014,517 for 2009! This is an increase from \$649,031,531 in 2008.

The Board of Directors has been discussing the District's tax rate for 2009. The Board of Directors are proposing to maintain the District's tax rate of \$0.71 per \$100 assessed value of your home resulting in zero increase from the 2008 tax rate. These tax dollars go to maintaining the water and sewer infrastructure as well as such amenities as additional security in the District. The District has adopted an exemption from ad valorem taxation for the 2009 tax year of 20% of the appraised value (but not less than \$5,000) of the residence homestead. The Board also adopted a \$10,000 homestead exemption for disabled persons or persons over 65 years of age. In addition, the Texas Legislature has recently enacted House Bill 3613, which added Section 11.131 to the Texas Property Tax Code. This legislation created an exemption from property taxes for veterans who are either 100% disabled or are unemployable. The exemption is applicable only to qualifying veterans' residence homesteads. You may qualify for the new 100% exemption if you meet these requirements:

- You own a home and occupy it as your residence homestead; and
- You are receiving 100% disability compensation from the United States Department of Veterans Affairs for a service-connected disability; or

- You have a disability rating of 100% disabled or of individual unemployability.

You must file for this exemption. For more information please visit the Brazoria County Appraisal District's ("BCAD") website at www.brazoriacad.org or call the BCAD to discuss this exemption. The Board of Directors believes this is a necessary exemption and want to thank all of its resident Veterans for their continued service to this country.

As a reminder, the City of Pearland operates our water and sewer system and provides garbage collection services. If you have any questions about your service, please call the City of Pearland at (281) 652-1603.

The District generally meets the first Tuesday at 11:00 a.m. at the offices of Allen Boone Humphries Robinson LLP, 3200 Southwest Freeway, Suite 2600, Houston, Texas 77027. Agendas for each meeting are posted at the Emerald Village Recreation Center, 11814 N. Clear Lake Loop, Pearland, Texas 77584, and at the Brazoria County Courthouse at least 72 hours before every meeting. The Board of Directors invites all members of the public to attend its meetings. Please contact (713) 860-6458 if you need confirmation of a Board meeting.

HOA Payments

Please note that HOA payments may be conveniently made at the office at 12234 Shadow Creek Parkway Bldg 3, Ste 114.



KANDILAND
A Happy Learning Place

Premier Infant / Toddler Care

SPECIAL!!!
No Enrollment fee with this ad.

Kandiland Day School
Specializing in Premier Baby Care

- Low child/Staff Ratio
- Sign language
- Reading Preparation (beginning this Fall)
- Physical Development through exercise
- Daily/weekly reports to keep you informed of your child's progress
- Bright and Spacious Rooms
- Happy, loving caregivers

Low Infant / Staff Ratio

2045 Reflection Bay Dr. • Pearland, Texas 77584 • 713-436-5092

PEARLAND NEWS

CITY OFFERS \$1000

Vehicle Arson Reward

The City of Pearland Fire Marshal's Office is offering a \$1,000 reward for information leading to the arrest and prosecution of arson suspect(s) related to the November 11th arson of a vehicle located in the 13000 block of Imperial Shores Drive.

A white Ford extended cab pickup truck was parked in front of the owner's home when it was broken into and set ablaze. A neighbor living across the street was awakened by what was described as a loud bang and a bright light at approximately 4 a.m. The neighbor went to the window and discovered the truck on fire. Based on evidence found at the scene, it is believed that the fire was intentionally set.

The Pearland Fire Marshal's Office is currently seeking help to identify the person or persons responsible for this fire. Those with any information are encouraged to call 281-651-1954. Information provided that results in an arrest and conviction is eligible for the reward.

For information concerning investigations, please contact Shohn Davison, Deputy Fire Marshal at 281-652-1965, or sdavison@ci.pearland.tx.us. For information about becoming a fire fighter, please contact Monica Eaton at 281-412-4807, or meaton@ci.pearland.tx.us.

The Current is the official publication of the Shadow Creek Ranch Maintenance Association. At no time will any source be allowed to use The Current's contents, or loan said contents, to others in anyway, shape or form, nor in any media, website, print, film, e-mail, electrostatic copy, fax, or etc. for the purpose of solicitation, commercial use, or any use for profit, political campaigns, or other self amplification, under penalty of law without written or expressed permission from the Shadow Creek Ranch Maintenance Association and Peel, Inc. The information in the newsletter is exclusively for the private use of Shadow Creek Ranch and Peel, Inc.

DISCLAIMER: Articles and ads in this newsletter express the opinions of their authors and do not necessarily reflect the opinions of Peel, Inc. or its employees. Peel, Inc. is not responsible for the accuracy of any facts stated in articles submitted by others. The publisher also assumes no responsibility for the advertising content with this publication. All warranties and representations made in the advertising content are solely that of the advertiser and any such claims regarding its content should be taken up with the advertiser.

* The publisher assumes no liability with regard to its advertisers for misprints or failure to place advertising in this publication except for the actual cost of such advertising.

* Although every effort is taken to avoid mistakes and/or misprints, the publisher assumes no responsibility for any errors of information or typographical mistakes, except as limited to the cost of advertising as stated above or in the case of misinformation, a printed retraction/correction.

* Under no circumstances shall the publisher be held liable for incidental or consequential damages, inconvenience, loss of business or services, or any other liabilities from failure to publish, or from failure to publish in a timely manner, except as limited to liabilities stated above.

PROMOTE YOUR BUSINESS *in Style!*

- BUSINESS CARDS / BUSINESS CARD MAGNETS / MAGNETS
- POST-IT® NOTES / CUBES & MEMO PADS / DECALS
- BUMPER STICKERS / MEMBERSHIP CARDS & ID BADGES
- PERSONALIZED WRITING INSTRUMENTS / CALENDARS
- HEALTHCARE PROMOTIONS / DRINKWARE & KOOZIES®
- NEWSLETTERS / BOOKLETS / FLYERS
- ENVELOPES / LETTERHEADS / RUBBER STAMPS
- BUSINESS FORMS / AND MUCH MORE....

NEED AN ADVERTISING SPECIALITY ITEM?

1-888-687-6444 ext. 24

Quality
PRINTING COMPANY

Experience Matters
Doing business for
30+ years.



2009 HOMETOWN *Christmas Festival*

Pearland's Annual Tree Lighting starts at 7pm on Fri, Dec. 4th.
Celebrate the holiday season all weekend long! Snow! Santa!
Carriage Rides! Christmas Pictures! Breakfast with Santa! Live
music! Milk & Cookies with Santa! Outdoor Movie!
Holiday treats and more!

ICE SKATING AT *Pearland Town Center*

Celebrate the holidays!
5,000-square feet of real, frozen ice right here in Pearland
Opens Thurs, Dec 3, 2009 thru Sun, Jan 10, 2010. Event produced
by Pearland Parks & Recreation & Pearland Town Center

**NOT AVAILABLE
ONLINE**

"A JOURNEY IN TIME..."

100 Years Past

28th Annual Lighted Christmas Parade
Saturday, December 5, 2009

Parade starts at 5:30pm on FM 518
from Pearland Parkway to Old Alvin Road

Join the Parade this year -- have fun with the whole city!
Businesses, non-profits, schools and YOU are invited! Prizes for
floats are given in four categories: Best Overall, Runner Up,
Best Theme and Best Walking Group.

Entry forms available online at www.pearlandparks.com.
\$10 per entry/group.

**Advertise YOUR business
to YOUR neighbors for
less than 4¢ per home.**

Effective Advertising, Done Right.

Call today to Reserve your space.

Peel, Inc.
COMMUNITY NEWSLETTERS

1-888-687-6444
www.PEELinc.com

SCR

Peel, Inc.

311 Ranch Road 620 S. Ste 200
Lakeway, TX 78734-4775
www.PEELinc.com

PRSRT STD
U.S. POSTAGE
PAID
PEEL, INC.

SCR

LISTED ⇒ STAGED ⇒ MARKETING
⇒ Sam *SOLD* It.com ⇐

**Experience the MAGIC
of the Pearland Sam TEAM!**



Sam
FERRERI

PearlandSamTEAM.com

Let us help you with the MAGIC of Home Staging!

Home staging is about illusions. It is how David Copperfield would sell a house. Beyond decorating and cleaning, it's about perfecting the art of creating moods. Staging makes your house look bigger, brighter, cleaner, warmer, and, best of all, makes home buyers want to buy it. And we have two certified home stagers on staff ready to help you get yours ready and **SOLD!**

CALL SAM TODAY!

832-200-5656

RE/MAX

**Top
Realty**

Each Office
Independently Owned and Operated