

THE Current

SHADOW CREEK RANCH

January 2010

Official Publication of the Shadow Creek Ranch HOA

Volume 2, Issue 1

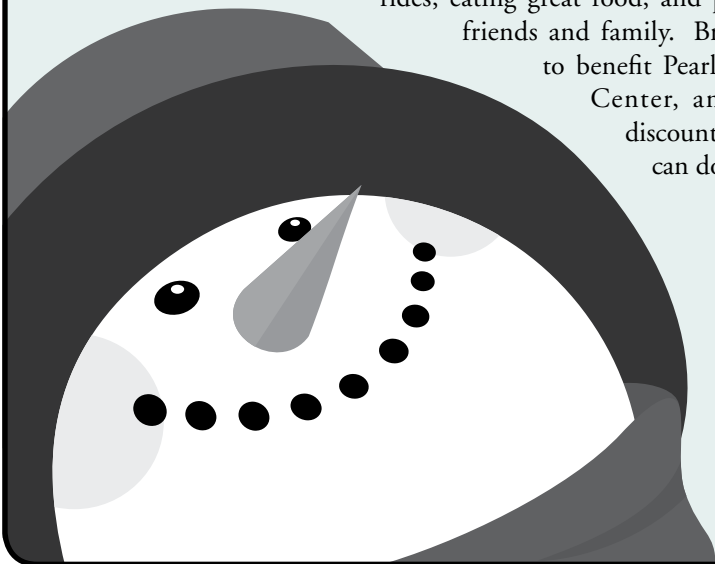
Winterfest

Submitted by Angie Sanders, Pearland Parks and Recreation

Event Date: January 9, 2010
Time: 10am – 5pm
Location: Pearland's Independence Park
Parking: Free parking and shuttle provided at Pearland High School
3775 South Main (Handicap parking available inside the park)
Cost: 2 and under are free
3 to 16yrs are \$10 or \$8 with the donation of a can good
17yrs to adult are \$4 or \$2 with a can good donation

The 14th annual "Winterfest is set for Saturday, January 9th, from 10 a.m. to 5 p.m. at Pearland's Independence Park (9 a.m. for special needs kids). For the third year Winterfest is proud to host a 'Green Theme' introducing the Recycle Snowman contest and GREEN Zone. Another main attraction - 200,000 pounds of SNOW!

Come for a fun filled day of playing in the snow, riding rides, eating great food, and playing games with friends and family. Bring a canned-good to benefit Pearland Neighborhood Center, and receive one \$2 discount per ticket for each can donated!



Shadow Creek Ranch Stork Report

FREDRICK DWAYNE THOMPSON II

Proud Parents: Fredrick & Katrina Thompson

Born: 10/02/09 at 3:02 pm
8lbs 5 oz @ St. Luke's Episcopal



Go Green
Go Paperless



Sign up to receive The Shadow Creek Ranch Newsletter in your inbox. Visit PEELinc.com for details.

IMPORTANT NUMBERS

EMERGENCY NUMBERS

EMERGENCY	911
Fire.....	911
Ambulance	911
Sheriff – Non-Emergency.....	281-331-9000

SCHOOLS

Mary Marek Elementary	281-245-3232
Laura Ingalls Wilder Elementary	281-245-3090
Manvel Junior High	281-331-1416
Alvin Senior High	281-331-8151
Manvel High School	281-245-2235
Alvin ISD Administration	281-338-1130
Alvin ISD Transportation	281-331-0960

UTILITIES

Electricity - Reliant Energy.....	713-207-7777
Gas - Center Point	713-659-2111
Trash Removal - City of Pearland	281-652-1600

OTHER NUMBERS

Pearland Post Office	281-485-2132
Poison Control.....	800-764-7661
Brazoria County Health Department	979-864-1484
Animal Control.....	281-756-2265

CITY

Pearland City Hall.....	281-652-1600
Pearland Utility Billing - Water Dept.	281-652-1603
Pearland Animal Control.....	281-652-1970
Pearland Police Dept - Non-Emergency	281-652-1100
Pearland Public Works.....	281-652-1900

NEWSLETTER

Articles	shadowcreekbranch@peelinc.com
Publisher	
Peel, Inc.	1-888-687-6444
Advertising.....	1-888-687-6444

MGMT COMPANY

ASSOCIATION MANAGEMENT, INC.

Community Manager	
Maria Southall-Shaw.....	713-332-4675
On-Site Manager	
Kerry Holmes	713-436-4563
Assistant On-Site Manager	
Kimberly Cartwright.....	713-436-4563
Service Specialist	
Carmen Sierra.....	713-332-4685

www.AMITX.com

Table of Contents

AROUND SHADOW CREEK RANCH

Community Section News	3-5
Half Moon Terrace	3
Nicole Terrace.....	4
Silver Leaf Glen	4
The Island	5
Social Club News	5-7
Bunco.....	5
Ladies Lunch Club	5
Pokeno	6
Salsa Club	6
SCR Youth Soccer Club	7
Teenage Job Seekers.....	9

PEARLAND NEWS

City Offers \$1000 Vehicle Arson Reward	9
Brazoria County Municipal Utility District No.26	10
Councilman's Corner.....	12

NEWSYOU CAN USE

Financial Focus.....	13
Have You Googled Lately.....	14

Shadow Creek Ranch Stork Report

Congratulations!
Let us help celebrate...
email info on the arrival
of your little one to
shadowcreekbranch@peelinc.com.

**Advertise
Your Business Here
888-687-6444**

AROUND SHADOW CREEK RANCH

Half Moon Terrace

My name is Annette Kaltwasser and I am your neighborhood representative. I act as a liason with the HOA and work closely to stay caught up with the updates. My husband and I have been a resident here for five years and really enjoy our home. What a great evening with the neighbors on National Night Out in Half Moon Terrace in October. We had many neighbors get together. Officer Wess with the Pearland Police Dept. made a visit to talk statistics in the City of Pearland and brought goodies for the kids. Thank you Ashley Kropf for making your delicious dessert! Look forward to next year and many more neighborhood events! Hope everyone had a wonderful Thanksgiving.



When You're Ready to Sell
Call The Experts at the Front Door of YOUR Community!



Cathy Spacek

832-643-7768

cathy@cathyspacek.com

Top Producer &

Resale Specialist



2005



2006

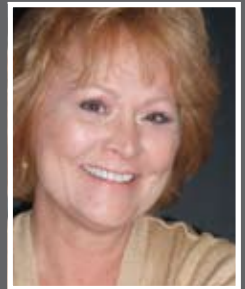
**Platinum
Producer**

The Original Shadow Creek Ranch Realtors
Specializing in Your Community

Maximum Exposure of Your Listing
*Located in the SCR Visitors Center, and Welcoming
More Walkin Buyers Than Any Other
Real Estate Company*

**Even More Exposure with Our Exclusive
Live Online Chat**

*Reaching Out to Buyers Worldwide...
24 Hours a Day, 7 Days a Week*



Ricki Stockwell

713-306-3773

redrock811@aol.com

SCR Top Producer

**Platinum
Producer**



2004



2005



2006



2007



2008



2009

AROUND SHADOW CREEK RANCH

Nicole Terrace

Hope everyone had a great Holiday Season! Time to start your New Year resolutions! We ended 2009 with a great block party! It was awesome to get out and meet our neighbors and start to plan our next few events. A huge THANK YOU to the Novaks for providing the meat (and cooking it), tables, chairs and organizing it all! Tina Novak you did a great job everyone thanks you! Thank you to all the families that came I know the kids enjoyed the jump house and the fire truck. It was fantastic that the firemen stayed almost the whole time and allowed us to use the ladder for the piñata. It was wonderful that BJ's Brew-house gave us crayons, free dessert coupons and kids eat free coupons, as well as Mongo's for the coupons and the Pearland Town Center for the awesome coupon books! I hope everyone was able to take advantage of the items. I know we will have a great time at our next event. I will continue to send out updates via email so please send me your email if you are not on the distribution list angelique92@att.net.

Happy New Year!

Angelique Guzman- Nicole Terrace Representative

Greetings, Silver Leaf Glen!

Let me take a minute to introduce myself. My name is Kathryn Ledet, and I am the new section representative for Silver Leaf Glen. Our former representative, Elizabeth Christensen, is moving all the way to the state of Washington. We certainly wish her well!

My husband Chris and I have been living in Shadow Creek Ranch since we moved here over three years ago. We both come from a few hours down I-10, in Lafayette, Louisiana. So if you ever want some tips on Cajun cooking, we can point you in the right direction! We really love living in SCR. The people, the location, the amenities...they are all mostly second to none. That being said, there are always ways to improve, and we should all be able to be a part of that.

The first step is to make sure that we know each other. The National Night Out in October was a great success, and we were able to collect contact information from everyone that was there. We now have contact information and an email distribution list for 25 families in the neighborhood. But we have 114 houses in Silver Leaf Glen, so we've still got a long way to go. If you haven't done so already, I'd like to ask that you take a few minutes and send an email to silverleafglen@gmail.com. With your name, address, phone number, and email address, I'll be able to keep you informed of events and information that affect Silver Leaf Glen.

Last but not least, I hope everyone had a Merry Christmas and a very happy holiday season. The snow certainly made it something to remember!

(Continued on Page 6)

Staring At A Deadline For Using Your Health Benefits?

If you participate in a Flexible Spending or Healthcare Savings Account, you can use your benefits for eye care services and products including:

Eye Health Examination • Contact Lenses • Eyeglasses • Computer Glasses
Prescription Sunglasses • Laser Vision Correction



Let us show you how to get most from your benefits plan, especially if your plan requires that you use your benefits by December 31.

Schedule Your Appointment Now!

Vision Source!
Family Eye Care

Dipak R. Kalani, O.D.

713/436-7544

11801 Shadow Creek Pkwy
Suite 113

Pearland, Texas 77584

www.visionsource-shadowcreek.com



**COMPLETE PAIR
of GLASSES**

Save 50% on your second complete pair of eyeglasses (frames and lenses) when you purchase a complete pair of glasses. Must present this coupon at the time of order. May not be combined with any other offer or insurance plan. See associate for details.

**50%
OFF**

**EXAM, GLASSES
& CONTACTS**

\$199

Offer includes exam, 6 pair clear, spherical disposable contact lenses and one pair of clear, single vision CR-39 lenses with frames from our special collection. Must present this coupon at the time of order. May not be combined with any other offer or insurance plan. See associate for details.

Comprehensive Eye Health Exams • Lasik & Cataract Surgery Consultation

NEW FITNESS CENTER ON SHADOW CREEK PKWY

services

Aerobics • Personal Training
Bootcamps • Free Weights
Weight Machines • Cables
Nutritional Counseling
Baby Sitting
Locker Rooms



NEW FITNESS CENTER on Shadow Creek Pkwy (don't fight the 518 traffic any longer!) The first non-intimidating, no high-pressure-to-buy fitness center in Pearland!

BODY EVOLUTION fitness center is now pre-selling membership for Pearland's newest health club. Pre-sale rates only \$24.99* no contracts / month to month. Offer good for the first 99 members!

DISCOUNTS on pre-sale personal training rates also available!

LOCALLY OWNED & OPERATED by Shawn and Veronica Swearingen, who have 35 years of fitness experience!



Elizabeth G.
(Shadow Creek Ranch Resident)
90lbs lost and still going!



Joe K.
(Pearland Resident)
35lbs of fat lost and 15lbs of muscle gained!

BODY EVOLUTION

12155 Shadow Creek Pkw
(corner of Reflection Bay Dr.
& Shadow Creek Pkwy)
Pearland, TX 77584
713-314-0090

www.bodyevolutionnow.com

*first and last month due when joining

AROUND SHADOW CREEK RANCH

Greetings, Silver Leaf Glen!- (Continued from Page 4)

And during a time of holiday travels, remember that it's always a good idea to let your immediate neighbors know that you will be traveling and how long you will be gone so that they will be able to recognize any unwanted visitors at your house. Doing so not only keeps your house safer, but keeps our neighborhood safer in general.

Happy New Year!

Kathryn Ledet

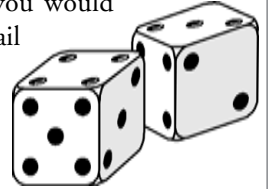
News from The Island,

We had a great turn out for our Neighbor Night Out. Our group focused on safety as a group. We exchanged emergency phone numbers, details on our automobiles and who worked from home during the day. The police department, the fire department, constables and two of our elected officials visited us during the evening. Felicia Kyle and Scott Sherman came by to visit with our group. Both Felicia and Scott serve on city council. The little ones toured the police car and made friends with the officer. Several of our residents currently employed or retired from the police force shared tips on safety and discussed the possibility of a security camera system for our area. A special thanks to Rox for all her hard work.

Bunco

Submitted by Angelicque Guzman

Are you interested in playing Bunco? We are in need of subs for each group. If you would like to be on the sub list please email angelicque92@att.net and we will get you on the list. You don't need to know how to play.



Ladies Lunch Club

Submitted by Angelicque Guzman

Happy New Year ladies! Just want to invite all the ladies in SCR to come out once a month to join us for ladies lunch. We meet each month at a different location and enjoy great food and conversation. If you would like to be added to the list please email angelicque92@att.net to be added to the list.

Housework won't kill you, but why risk it. Let our gloves do your dirty work!

Free Gift With Purchase
Purchase a gift certificate & we'll add on oven or refrigerator cleaning
FREE!
\$20 Value
Gift certificates available in any amount you choose.
Minimum purchase required

Christmas Special
\$30 Off
Detail Cleaning
This Month Only
With SAVE Coupon Only. Expires 1/5/10.

25% Off
Your Service When You Refer Us!

*Some restrictions apply. Call for details. With SAVE Coupon Only. Expires 1/5/10

- ✓ Weekly, Bi-Weekly, Monthly and One-Time Services
- ✓ Homes and Offices
- ✓ Detail Services
- ✓ Fully Trained Staff
- ✓ Move In/Outs
- ✓ Bonded and Insured
- ✓ All Equipment and Supplies Provided

www.whitegloveskleaningsvc.com
Not affiliated with any other White Gloves Cleaning.

❖ *White Gloves Kleaning Services* ❖

Call **281-99-SLIME** for a Free Phone Estimate!
(281) 997-5463

MasterCard VISA Discover

Bashans Painting & Home Repair

Commercial/Residential
Free Estimates

281-347-6702

281-731-3383 cell



- Interior & Exterior Painting
- Hardi Plank Installation
- Wood Replacement
- Sheetrock Repair
- Interior Carpentry
- Cabinet Painting
- Wallpaper Removal and Texturizing
- Pressure Washing
- Fence Repair/Replacement
- Garage Floor Epoxy
- Custom Staining
- Roofing
- Gutter Repair/Replacement
- Faux Painting

References Available • Fully Insured
NO PAYMENT UNTIL COMPLETION
bashanspainting@earthlink.net

AROUND SHADOW CREEK RANCH

Pokeno

Submitted by Angelique Guzman

It's time to get the Pokeno group off the ground this year. I have several ladies interested in playing. If you are interested in playing please email angelicque92@att.net and let me know. We are planning on starting in February. We will be meeting to set up a day of the month to play. You don't need to know how to play it is easy and we will teach you. Just another way to come out and meet other SCR residents.

Street Lights Out?

REPORT THE 6 DIGITS
ON THE POLE TO
WWW.CENTERPOINT.COM

SHADOW CREEK RANCH SALSA CLUB (AKA SCR SALSEROS)

Happy New Year!

Start the New Year right and try something new and exciting. If you are looking for a new activity for you and your significant other, If you are wanting to meet new people, if you are wanting to learn to Salsa-Merengue, then come join our Salsa group! There is no dancing experience or partners required. Everyone is friendly, from all ages and different walks of life.

For info, please contact Christian Gutierrez via email at christian@latindancefactory.com for more information.

FOR YOUR CALENDAR (RSVP BY EMAIL PLEASE)

- January Saturday 23rd 6:30pm to 8:30pm Salsa Social at Christian's place in SCR. Please email for information.



Spark Power Bank

Electricity Rates Are At Near Record Lows!

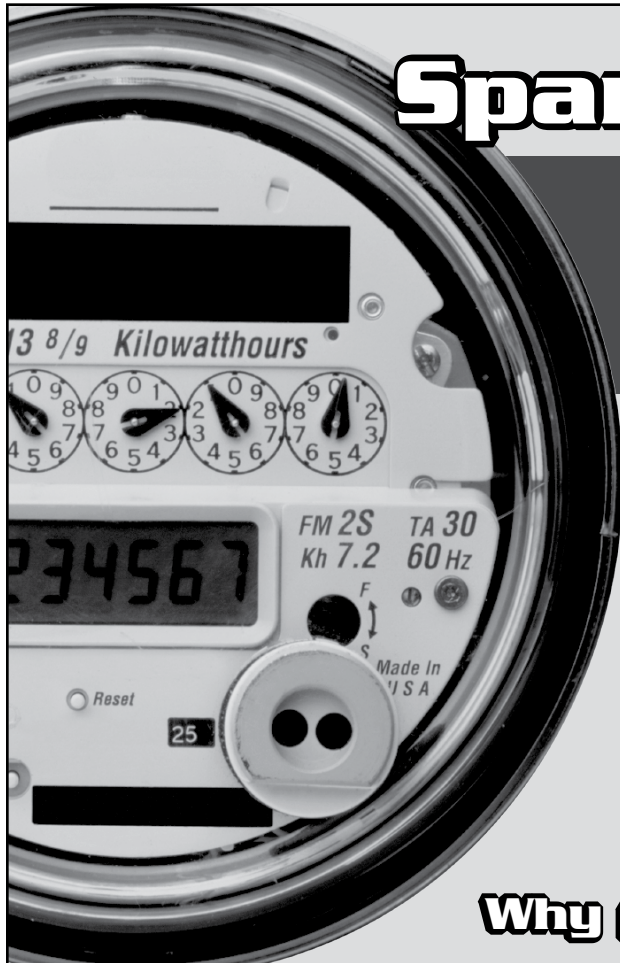
Compare our rates to ANY power provider in Texas and you'll see why SparkPowerBank.com is the low cost leader!

SIGN-UP ONLINE TODAY!
WWW.SPARKPOWERBANK.COM

Please choose "Newsletter Ad" as your referral

I'm Texas Energy Analyst Alan Lammey. Maybe you've heard me on the radio talking about the market forces that drive energy prices. I'm here to tell you that you're not stuck paying those high prices to big electric companies anymore!

Why pay more than you have to?



AROUND SHADOW CREEK RANCH

SHADOW CREEK RANCH SOCCER CLUB

Spring Registration

Ages 4-9. Register now at www.shadowcreeksoccer.org. Drive to practice and games in 3 minutes! Spring registration is open. Secure a place on a team for your daughter or son. Spring season begins March 20 and ends May 15.

Your child will play on a neighborhood team, receive a full uniform, KidSafe protection, extra free skills training if desired, and trophy. Games are Saturday mornings 8 am – noon. Fall season was a great success with over 280 youth players, so join the fun and register at www.shadowcreeksoccer.org.

Shadow Creek Soccer Club is a totally volunteer Federally recognized nonprofit organization and a member of the Houston Youth Soccer Association.



PROMOTE YOUR BUSINESS *in Style!*

- BUSINESS CARDS / BUSINESS CARD MAGNETS / MAGNETS
- POST-IT® NOTES / CUBES & MEMO PADS / DECALS
- BUMPER STICKERS / MEMBERSHIP CARDS & ID BADGES
- PERSONALIZED WRITING INSTRUMENTS / CALENDARS
- HEALTHCARE PROMOTIONS / DRINKWARE & KOOZIES®
- NEWSLETTERS / BOOKLETS / FLYERS
- ENVELOPES / LETTERHEADS / RUBBER STAMPS
- BUSINESS FORMS / AND MUCH MORE....

NEED AN ADVERTISING SPECIALITY ITEM?

1-888-687-6444 ext. 24

Quality
PRINTING COMPANY

Experience Matters
Doing business for
30+ years.



NOT AVAILABLE ONLINE

Classified Ads

Personal classifieds (one time sell items, such as a used bike...) run at no charge to Shadow Creek Ranch residents, limit 30 words, please e-mail shadowcreekranch@peelinc.com.

Business classifieds (offering a service or product line for profit) are \$50, limit 40 words, please contact Peel, Inc. Sales Office at 1-888-687-6444 or advertising@peelinc.com.

Experience Counts



Standing: Orisha Williams; Seated: Dora Bonner

Divorce/Child Custody • Civil Trials
Probate • CPS Services • Support & Visitation
Accidents & Injuries • Real Estate

Dora L. Bonner
Attorney at Law

979-265-1770

704 W. Plantation • Clute

Not certified by the Texas Board of Legal Specialization

CITY OFFERS \$1000

Vehicle Arson Reward

The City of Pearland Fire Marshal's Office is offering a \$1,000 reward for information leading to the arrest and prosecution of arson suspect(s) related to the November 11th arson of a vehicle located in the 13000 block of Imperial Shores Drive.

A white Ford extended cab pickup truck was parked in front of the owner's home when it was broken into and set ablaze. A neighbor living across the street was awakened by what was described as a loud bang and a bright light at approximately 4 a.m. The neighbor went to the window and discovered the truck on fire. Based on evidence found at the scene, it is believed that the fire was intentionally set.

The Pearland Fire Marshal's Office is currently seeking help to identify the person or persons responsible for this fire. Those with any information are encouraged to call 281-651-1954. Information provided that results in an arrest and conviction is eligible for the reward.

For information concerning investigations, please contact Shohn Davison, Deputy Fire Marshal at 281-652-1965, or sdavison@ci.pearland.tx.us. For information about becoming a fire fighter, please contact Monica Eaton at 281-412-4807, or meaton@ci.pearland.tx.us.

ARE YOU READY TO MAKE THE RIGHT MOVE?
I HAVE A WINNING GAME PLAN JUST FOR YOU,
TO HELP YOU REACH YOUR GOALS.

LET'S TEAM UP!
CALL ME TODAY.

Your Home Coach
832-428-6207
RE/MAX Top Realty

Your Home Coach
VINCE KEARNEY
PearlandHomeCoach.com

CDPE
CERTIFIED DISTRESSED
PROPERTY EXPERT

TRUST - COMMITMENT - SERVICE
COACHING BUYERS AND SELLERS TO WIN!

PEARLAND NEWS

BRAZORIA COUNTY *Municipal Utility District No. 26*

We hope all residents of Shadow Creek Ranch have noticed the construction of new homes, the extension and improvements of Broadway, and new commercial businesses in and around our neighborhood. The progress and growth of this infrastructure brings value to our community. The Brazoria County Appraisal District has released the 2009 Certified Value for Brazoria County Municipal Utility District No. 26 (the "District") and we are excited to report that our District is valued at \$702,014,517 for 2009! This is an increase from \$649,031,531 in 2008.

The Board of Directors has been discussing the District's tax rate for 2009. The Board of Directors are proposing to maintain the District's tax rate of \$0.71 per \$100 assessed value of your home resulting in zero increase from the 2008 tax rate. These tax dollars go to maintaining the water and sewer infrastructure as well as such amenities as additional security in the District. The District has adopted an exemption from ad valorem taxation for the 2009 tax year of 20% of the appraised value (but not less than \$5,000) of the residence homestead. The Board also adopted a \$10,000 homestead exemption for disabled persons or persons over 65 years of age. In addition, the Texas Legislature has recently enacted House Bill 3613, which added Section 11.131 to the Texas Property Tax Code. This legislation created an exemption from property taxes for veterans who are either 100% disabled or are unemployable. The exemption is applicable only to qualifying veterans' residence homesteads. You may qualify for the new 100% exemption if you meet these requirements:

- You own a home and occupy it as your residence homestead; and
- You are receiving 100% disability compensation from the United States Department of Veterans Affairs for a service-connected disability; or

- You have a disability rating of 100% disabled or of individual unemployability.

You must file for this exemption. For more information please visit the Brazoria County Appraisal District's ("BCAD") website at www.brazoriacad.org or call the BCAD to discuss this exemption. The Board of Directors believes this is a necessary exemption and want to thank all of its resident Veterans for their continued service to this country.

As a reminder, the City of Pearland operates our water and sewer system and provides garbage collection services. If you have any questions about your service, please call the City of Pearland at (281) 652-1603.

The District generally meets the first Tuesday at 11:00 a.m. at the offices of Allen Boone Humphries Robinson LLP, 3200 Southwest Freeway, Suite 2600, Houston, Texas 77027. Agendas for each meeting are posted at the Emerald Village Recreation Center, 11814 N. Clear Lake Loop, Pearland, Texas 77584, and at the Brazoria County Courthouse at least 72 hours before every meeting. The Board of Directors invites all members of the public to attend its meetings. Please contact (713) 860-6458 if you need confirmation of a Board meeting.

HOA Payments

Please note that HOA payments may be conveniently made at the office at 12234 Shadow Creek Parkway Bldg 3, Ste 114.



Make 'Protecting Your Family' a New Year's Resolution. Ask me about Farmers' affordable Life Insurance policies (starting at \$12.29 / mo*). Protect what matters most.

AUTO - HOME - WINDSTORM - BUSINESS - LIFE

Se Habla Español

(832) 423 - 9044 / vnguyen4@farmersagent.com

Your Local Pearland Insurance Agent.

FREE Child ID Kits (fingerprinting & photos) during 'Kids Night' at Del Pueblo - Mexican Restaurant.

Viet Nguyen



GREAT BIG DEAL!

*Get the wick
you want*



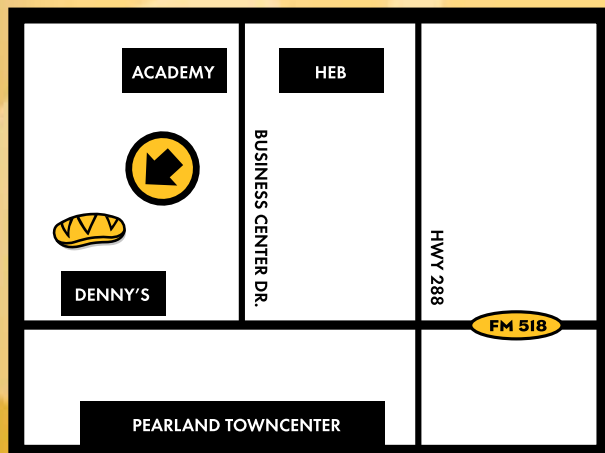
*Choose 1 of 5
great offers
when you purchase
a wick and
bring in this flyer.*

THIS OFFER IS GOOD ONLY AT THE
PEARLAND
WHICH WICH LOCATION

PEARLAND

Hwy 518 and Hwy 288
Behind Denny's

713.433.9424



- ☐ \$2 off a combo
- ☐ Free drink
- ☐ Free cookie
- ☐ Free chip & drink
- ☐ 2 for 1 shakes

Offer valid now through December 31, 2009.
One offer per bag per visit.

This coupon may be used up to 5 times until all offers have been used.

 whichwich.com

PEARLAND NEWS

COUNCILMAN'S CORNER

Happy New Year! As you are probably aware, the 2010 Census is underway. Being counted is critical, because among other things, census information is used to allocate over \$400 billion dollars of federal funding on infrastructure and services like:

- Hospitals
- Job training centers
- Schools
- Senior centers
- Bridges, tunnels and other-public works projects
- Emergency services

While it is important to stand up and be counted, it is also important to be cautious so that you are not a victim of a scam or crime. I encourage you to take the following steps to ensure that you are dealing with legitimate Census 2010 workers:

- If a U.S. Census worker knocks at your door, they will have a badge, a handheld

device, a Census Bureau canvas bag and a confidentiality notice. Ask to see their identification and their badge before answering their questions.

- Do not give your Social Security number, credit card or banking information to anyone, even if they claim they need it for the U.S. Census.
- Census workers may contact you by telephone, mail or in person at home. However, they will not contact you by e-mail, so be on the lookout for e-mail scams impersonating the Census. Never click on a link or open any attachments in an e-mail that are supposedly from the U.S. Census Bureau.

For more information on the 2010 census visit www.census.gov.

Your City Council continues to work hard for you every day. The City also strives to provide recreational activities for all citizens

to enjoy. I hope you were able to participate in some of the holiday events throughout the City. I invite you to join us for some great events coming up in the next few weeks, including WinterFest on January 9, 2010 at Independence Park. WinterFest is an award winning program produced by the Parks Department that will include over 200,000 lbs of snow, carnival rides, midway games and much more. Information about WinterFest and many more events can be found on the Parks Department website at www.pearlandparks.com.

As always, please let me know how I can help you. I wish you and your family a safe and prosperous New Year.

Scott Sherman

Councilmember, Position #2

sherman.scottj@gmail.com

Facebook: "Councilmember Scott Sherman"

Advertise YOUR business to YOUR neighbors for less than 4¢ per home.

Effective Advertising, Done Right.

Call today to Reserve your space.

Peel, Inc.
COMMUNITY NEWSLETTERS

1-888-687-6444

www.PEELinc.com

SCR

FINANCIAL FOCUS

Like many people, you may make some New Year's resolutions. Perhaps you've promised yourself that you'll visit the gym more often or learn a new language or reconnect with a long-lost friend. All of these are worthy goals, of course, and if you achieve them, you may add new dimensions to your life. But if you want to accomplish other major milestones you may have envisioned — a new home, college for your kids, a comfortable retirement and so on — you may need to set some New Year's financial resolutions.

WHAT TYPE OF FINANCIAL RESOLUTIONS SHOULD YOU MAKE? HERE ARE A FEW IDEAS TO CONSIDER:

- Contribute as much as you can afford to your 401(k). Take full advantage of your 401(k) or other employer-sponsored retirement plan. Your contributions are typically tax deductible and your earnings grow on a tax-deferred basis. Every time you get a boost in salary, try to increase the amount going into your 401(k), but at the very least, contribute enough to earn the employer's match, if one is offered. In 2010, the contribution limit for 401(k) plans is \$16,500, or \$22,000 if you're age 50 or over, although both these limits may increase if they are indexed for inflation.
- "Max out" on your IRA. Even if you have a 401(k), you're probably still eligible to contribute to an IRA. A traditional IRA grows tax deferred, while a Roth IRA's earnings are tax free, provided you've had your account at least five years and don't start taking withdrawals until you're 59-1/2. (Your ability to contribute to a Roth IRA is based on your income.) You can fund your IRA with virtually any type of investment. In 2010, you can put in up to \$5,000 to your IRA, or \$6,000 if you're age 50 or older, although, as was the case with your 401(k), these limits may go higher if they're indexed for inflation.
- Rebalance your investments as needed. Over time, your goals and risk tolerance can change. That's why it's a good idea to review and rebalance your portfolio at least once a year, possibly with the help of a professional financial advisor who is familiar with your situation.
- Avoid "emotional" investing. Don't make decisions based on emotional reactions to what's happening with your investments. For example, just because the price of an investment may have dropped significantly, it doesn't mean you should rush to sell it.

(Continued on Page 15)

Southwest Asthma & Allergy Associates



Your health, comfort and satisfaction are our primary focus. Our same day appointments mean we are available when you need us.
Visit James B. Cooper, MD and Michael L. Chou, MD. today!

Offering medical evaluation and treatment for children and adults with:
Asthma • Eczema • Food, Insect & Animal Allergies
Chronic Sinus Disease • Rhinitis • Hayfever • Hives

We accept most health insurance plans.
For more information or to make an appointment at any of our 12 locations,
visit us online at www.swaaa.com.

1901 Kirby Dr., #101
Pearland, TX 77584
(next to Mary Marek Elementary School)
(713) 413-8100

southwest
SWAAA.com
asthma & allergy associates

NEWS YOU CAN USE



LeBlanc
Insurance Agency
FARMERS

OBJECTIVE: Personal Service

11711 Shadow Creek Pkwy, #145

WELCOME!

713.436.4707

www.
LeBlanc
Insurance
Agency
.com

Personal & Business Insurance



Have You Googled Lately?

Submitted by Laurie Scott



Google is best known of course for its search engine (with 65% of the market no one is even close), and perhaps you're also a user of gmail, Google's free email service, but did you know that Google also offers everything

from photo editing to telephone services for free? *The list is too long to cover everything here, but here are a few highlights you might be interested in:*

- **PICASA** - This is a very easy to use photo editing program that can do everything from correcting color, contrast and saturation with a single click to automatically finding the "red" in the red-eye in your photos.
- **EMAIL** - With gigabytes of free storage that grows everyday, gmail is a great email alternative. With an excellent junk mail filter and superfast searches of all your messages, it is worth taking a look at.
- **GOOGLE DOCS** - Looking for a free alternative to a locally installed office productivity suite, Google Docs offers what most people need through your web browser, including a word processor, spreadsheet and presentation manager.
- **GOOG-411** - Hate paying a dollar or more just to dial 411 from your cell phone? Next time dial 1-800-GOOG-411 (800-466-4411) and forget those high cell-phone fees.
- **CALENDAR** - Google Calendar makes it easy to sync all your calendars together and share events with your friends. It can work alone or with most mail clients on your computer and cell phones.
- **GOOGLE VOICE** - How about one phone number for the rest of your life? With Google Voice you can get a free phone number that when called, will ring one or several phones of your choice at the same time, take messages and then forward a transcript via SMS to your cell phone. You can listen to your messages on the web, and even place calls from your browser. You can also have customized voice mail greetings depending on who is calling you.
- **Blogging** - Have something to say and want your own place to say it, then you want Blogger. If it's interesting to you, then publish yourself for nothing more than the time it takes you to write.
- **GOOGLE HEALTH** - Store your family's medical records securely online, making it easy to share with your doctor or other physician when necessary
- **GOOGLE EARTH** - Take a look at the neighborhood where you grew up, or maybe the home where friends overseas live. With Google Earth you can tour the world from your computer.

Google encourages its employees to take a certain amount of time to work on projects they find interesting, which is where a lot of Google's products come from. You can bet there will be more to come in the next year.

AUTUMNGROVE
Cottage

Specialized

- Alzheimer's care is not what we do, it's ALL we do
- 100% focus is memory care to provide THE BEST care
- Licensed specifically for Alzheimer's/dementia care

Simple

- Limited to 16 private rooms
- One monthly price, no worries about levels of care

Our purpose is to honor our residents and those who love and care for them.

**Specialized
Alzheimer's Care**



Atascocita Lic. # 104020	Champions Lic. #103059	Copperfield/CyFair Lic. #102347	Heights License pending
Katy Lic. #102463	Kingwood License pending	Pearland Lic. #104029	The Woodlands Lic. #103125

Call 832-349-5735 or 713-870-1393 www.AutumnGroveCottage.com



pet lodging | daycare | training | grooming

*Bringing Country
Fun to the City*

A New Year for you...
a New Start for your Best Friend. In cooperation with Pearland Parks & Recreation, Meadowlake Pet Resort is offering SIT, STAY & PLAY training classes at bargain prices for Pearland residents. Class size is limited. Call for more information and to reserve a spot for your Best Friend.





13500 Furman Road • Houston, Texas 77047

713.413.1633

www.meadowlakepetresort.com

Financial Focus - (Continued from Pg 13)

Despite the price drop, it may still have good prospects and it might be an important part of your investment strategy. Consider all factors before making “buy” or “sell” decisions.

- Keep sufficient cash in your portfolio — During the long bear market of 2008 and early 2009, many investors discovered that they lacked enough cash and “cash equivalent” vehicles in their portfolios. Of course, you need enough cash on hand to meet unexpected expenses without dipping into long-term investments. But beyond that, the presence of cash and short-term, more liquid investments can help reduce the volatility in a portfolio that may sometimes be battered by both the stock and bond markets.

These financial resolutions, like all types of New Year’s resolutions, may not be easy to keep. But if you can stick with them, you may have many happy new years in the future.

DO YOU HAVE REASON *To Celebrate?*

We want to hear from you! Email shadowcreekranch@peelinc.com to let the community know!

The Current is the official publication of the Shadow Creek Ranch Maintenance Association. At no time will any source be allowed to use The Current’s contents, or loan said contents, to others in anyway, shape or form, nor in any media, website, print, film, e-mail, electrostatic copy, fax, or etc. for the purpose of solicitation, commercial use, or any use for profit, political campaigns, or other self amplification, under penalty of law without written or expressed permission from the Shadow Creek Ranch Maintenance Association and Peel, Inc. The information in the newsletter is exclusively for the private use of Shadow Creek Ranch and Peel, Inc.

DISCLAIMER: Articles and ads in this newsletter express the opinions of their authors and do not necessarily reflect the opinions of Peel, Inc. or its employees. Peel, Inc. is not responsible for the accuracy of any facts stated in articles submitted by others. The publisher also assumes no responsibility for the advertising content with this publication. All warranties and representations made in the advertising content are solely that of the advertiser and any such claims regarding its content should be taken up with the advertiser.

* The publisher assumes no liability with regard to its advertisers for misprints or failure to place advertising in this publication except for the actual cost of such advertising.

* Although every effort is taken to avoid mistakes and/or misprints, the publisher assumes no responsibility for any errors of information or typographical mistakes, except as limited to the cost of advertising as stated above or in the case of misinformation, a printed retraction/correction.

* Under no circumstances shall the publisher be held liable for incidental or consequential damages, inconvenience, loss of business or services, or any other liabilities from failure to publish, or from failure to publish in a timely manner, except as limited to liabilities stated above.

Emergency Room Open 24 Hours

READY OR NOT ... WE ARE.™

Texas Emergency Care Center is open **24 hours a day.**

We’re committed to delivering comprehensive medical services in a comfortable environment with little to no wait time – day or night.

You’ll experience:

- A full-service facility equipped with a complete laboratory, radiology, CT scanning and cardiac monitoring.
- Prompt, friendly and caring service.
- Quality face time with a physician who is Board Certified in Emergency Medicine.

After all, emergencies just can’t wait.

281-648-9113

All private insurance accepted.

FM 518 at Dixie Farm Road
3115 Dixie Farm Road, Suite 107

www.txercare.com

Accredited by the Joint Commission on Accreditation of Healthcare Organizations for our commitment to excellence.



T E X A S
EMERGENCY CARE
C E N T E R™
AT PEARLAND

Peel, Inc.

311 Ranch Road 620 S. Ste 200
Lakeway, TX 78734-4775
www.PEELinc.com

PRSRT STD
U.S. POSTAGE
PAID
PEEL, INC.

SCR

LISTED ⇒ STAGED ⇒ MARKETING
⇒ Sam *SOLD* It.com ⇐

**Experience the MAGIC
of the Pearland Sam TEAM!**



Sam
FERRERI

PearlandSamTEAM.com

Let us help you with the MAGIC of Home Staging!

Home staging is about illusions. It is how David Copperfield would sell a house. Beyond decorating and cleaning, it's about perfecting the art of creating moods. Staging makes your house look bigger, brighter, cleaner, warmer, and, best of all, makes home buyers want to buy it. And we have two certified home stagers on staff ready to help you get yours ready and **SOLD!**

CALL SAM TODAY!

832-200-5656

RE/MAX

**Top
Realty**

Each Office
Independently Owned and Operated