



# The HPWBANA News

Volume 6, Number 2

February 2010

[www.hpwbana.org](http://www.hpwbana.org)

## MESSAGE

### *From The Board*

It's Dues Renewal Time! Watch your mailbox for the membership renewal letter from HPWBANA, and send in your dues. Remember that your dues support all the HPWBANA events throughout the year—including The Perry Park Egg Hunt (April 3, 2010), The Independence Day Parade and Celebration, and other events. Dues are only \$15.00 per household.

## HPWBANA BUSINESS

### *Membership for '10*

Consider supporting HPWBANA through your business in 2010! The HPWBANA business sponsorship is only \$50.00 per year. For your sponsorship, HPWBANA offers you a link to your website through the association website ([hpwbana.org](http://hpwbana.org)), participation in HPWBANA events and the satisfaction of supporting your neighborhood. If you are interested in finding out more about business sponsorship, contact Scott Rogillio [atscott@rogillio.com](mailto:atscott@rogillio.com)

## UPDATE ON PROPOSED PERRY LANE

### *Traffic Calming Plan:*

We continue to address the traffic safety concerns along Perry Lane and the nearby streets. We recently went door to door and asked area residents what they thought about a traffic calming plan that would help address the speeding issues on Perry Lane. We discussed the installation of speed cushions & other possible traffic calming devices.

Most residents recognized the speeding and safety issues throughout the neighborhood, particularly along Perry Lane and felt that safety should be the number one concern.

If we are successful in gaining the overall support from the area residents we will ask the city to support our efforts and move toward the next step in getting final approval of the plan.

The city will mail ballots to neighbors that they designate are in the "affected area." If sixty percent of ballots returned are in favor of the plan, it will move to the next stage of implementation.

We will continue to keep you informed as things progress. Please feel free to contact me at [tasconstruction@austin.rr.com](mailto:tasconstruction@austin.rr.com) with any questions or concerns.

Tonianne Soster

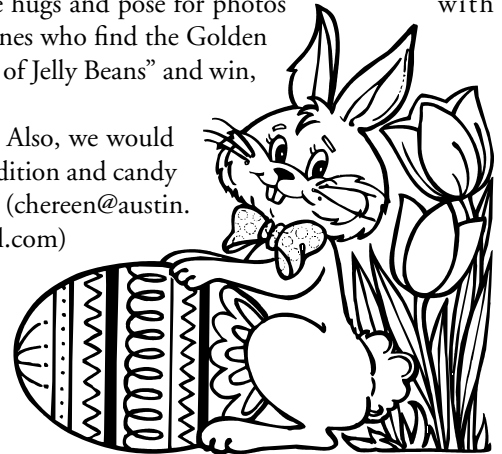
Traffic Enforcement Committee Member

## PERRY PARK EGG HUNT

The Perry Park Egg Hunt will be on Saturday, April 3rd. The hunt will begin at 9:30 a.m. Don't be late! The Easter Bunny will be on hand to give hugs and pose for photos with the children. Prizes will be awarded to the lucky ones who find the Golden Egg in each age category. Play "Guess the Number of Jelly Beans" and win, too! Don't miss this fun HPWBANA tradition.

Volunteers are needed to hide eggs and fill eggs. Also, we would welcome your donation of plastic eggs in good condition and candy for filling eggs. Please contact Chereen Fisher ([chereen@austin.rr.com](mailto:chereen@austin.rr.com)) or Carolyn Robinson ([carrob99@hotmail.com](mailto:carrob99@hotmail.com)) to volunteer to help with the egg hunt.

*Save The Date!*



## IMPORTANT NUMBERS

Austin Citywide Information Center 974-2000 or 311  
Emergency Police ..... 911  
Non-emergency Police (coyote sighting, etc.) ..... 311  
Social Services (during work hours) ..... 211  
SPO David J. Knutson  
Central West District APD Rep.....974-5917  
Wildlife Rescue 24 Hour Hot Line .... 210-698-1709

## 09' BOARD OF DIRECTORS

### PRESIDENT

Carolyn Robinson ..... carrob99@hotmail.com

### VICE PRESIDENT

Tonianne Soster.....tasconstruction@austin.rr.com

### SECRETARY

Andrea Torres ..... andreatorres11@yahoo.com

### TREASURER

Ben Friedman.....bfriedman@landmtg.com

### EVENTS CHAIR

Chereen Fisher .....chereen@austin.rr.com

### NEWSLETTER EDITOR

Susan Fannin.....sfannin@austin.rr.com

### MEMBERS

Kirby Walker ..... kirbywalker@austin.rr.com

Scott Rogillio .....scott@rogillio.com

David Obermann ..... humbug@texas.net

The HPWBANA Board meets on the 3rd Monday of each month except December. Meetings are held from 7:00 – 8:45 p.m. All neighbors are invited to attend. [www.hpwbana.org](http://www.hpwbana.org)

HWPBANA is bordered on the north by 2222, on the south by 35th St., on the west by Mt. Bonnell Rd., and on the east by MoPac and by Bull Creek Rd. between Hancock Dr. and 45th St. Mail your membership dues to HPWBANA, P.O. Box 26101, Austin, Texas 78755

## ADVERTISING INFO

Please support the businesses that advertise in the HPWBANA Newsletter. Their advertising dollars make it possible for all residents to receive a newsletter at no charge. No neighborhood association funds are used to produce or mail the newsletters. If you would like to support the newsletter by advertising, please contact Peel, Inc. Sales Office at 512-263-9181 or [advertising@PEELinc.com](mailto:advertising@PEELinc.com) for ad information and pricing.

## Tech Tip of the Month

*Mark Robbins*

We've all heard it: "Backup, backup, backup." Do you know why you need to back up? Yes, being prepared for the unknown is important, but this is actually a known fact: MOST HARD DRIVES WILL BE DEAD WITHIN 3-5 YEARS, and many do fail within the first year. Read that again. Now think about your 3 year-old PC... that hard drive is a ticking time bomb of pain just waiting for the most inopportune time to die or even just corrupt the data that is on there (which is just as bad or even worse from a data standpoint).

But how many of us actually do back up our data and how often? From my personal experience, very, very few people have backups that were made within the past month or three, if anything at all. But still, everyone acknowledges that they need to backup. So why don't they? Well, first off, it costs money. You need something to back up onto. Secondly, it takes effort and often isn't trivial to do. Third, it's boring (Well, it is. Do you REALLY want to spend hours trying to figure out what needs to be backed up, doing test backups, testing those backups, and then regularly performing the backups for the rest of your life? Yeah, me neither).

So instead, we take the risk, hoping and praying that nothing happens until we buy that next computer and copy everything over, thus effectively making our old computer the "backup," even though it isn't really one because it's now been handed down to some other use, and the data on there now will potentially be changed or even deleted. So when we have to go back to it a year from now because that shiny new computer's hard drive died, we are only able to recover 1/4 of our data, and we spend days upon days recreating it, and some data will just be lost forever.

### CD/DVD

Optical disks have a shelf life of between 5-10 years unrecorded. When you burn data to them the life expectancy drops to about half those lengths. If you have precious photo's that have been sitting around on disk's I suggest you get them off immediately.

### FLASH DRIVE/USB DRIVES

While extremely handy for transporting data they are not recommended for long term storage. personally have had 3 go belly up on me in the past year. Unlike a hard drive where it may be possible to recover data it is not possible on one of these drives.

*(Continued on Page 3)*

## STEVE'S PLUMBING REPAIR

- water pressure problems
- sewer & drain service
- fiber optic drain line inspections
- free estimates
- satisfaction guaranteed

Steve Brougher  
276-7476

1106 West Koenig Lane

Master License: M-17531



## Tech Tip of the Month - (Continued from Page 2)

### EXTERNAL HARD DRIVES

This is the best solution if you want your data right there in front of you. Today's external drives are much better and quite a bit less expensive than in days past. When purchasing an external hard drive you should look for one that comes with "One Touch" software. What this basically means is the first time you hook up your external drive the software will pop up and ask you what files you would like backed up. Then each time you are done using your computer you simply push a button on the external drive and it automatically backup's the previously selected documents. You always have the option of opening the software and adding or deleting folders and files to be backed up. External hard drives generally have a longer life span than your internal drive running your operating system for the fact that it is only holding your data, but they are not infallible.

### ONLINE BACKUP SERVICES

The largest and most recognizable name you all may have heard of is Carbonite. You download software from them and it automatically backs up all the information you want. Much like the One Touch software it defaults to certain folders and lets you add or delete others of your choice. For the price of around 50 dollars a year this is an excellent choice for unlimited amounts of data. Your data is off site, not susceptible to fire or burglary, and if you get a new computer it is easy to transfer the data to it.

## Not Too Late!

Last month, you received a letter from HPWBANA asking you to either join the neighborhood association or renew your membership. If you haven't already done so, it is not too late!

Your neighborhood association dues keep the beautiful medians watered, remove non-native, invasive plants from Perry Park, promote crime prevention, and bring the neighbors together with events at Easter and the 4th of July.

Please consider joining HPWBANA or renewing your membership this month. Simply fill out the membership coupon on the back of this newsletter and mail to: HPWBANA, P.O. Box 26101, Austin, Texas, 78755.

We could not do it without you!

## Pet Leash Law

This is a reminder that City of Austin Code (Chapter 3-4) requires you to have your pets on a leash when you are out and about in the neighborhood, including non-fenced areas of your own yard.

# That house sold for WHAT?

[www.HomeValues78731.com](http://www.HomeValues78731.com)

- What is the asking price of the house across the street?
- What did that house around the corner finally sell for?
- Are home values going up or down on my street?



Rebecca Spratlin  
Realtor®, GRI, ePro  
512-694-2191



Coldwell Banker United, Realtors®  
9442 N. Capital of Texas Hwy.  
Arboretum Plaza I, Suite 600  
Austin, TX 78759

# Dear January,

I'm not  
waiting for  
you anymore.

I'm  
starting  
now.

Check out our NEW GROUP POWER classes!  
*Your 1st class is FREE!*

View our GROUP POWER PREVIEW on [youtube.com/gotbodybusiness](http://youtube.com/gotbodybusiness).



WEST ANDERSON LANE | 459-9424  
DAVENPORT VILLAGE | 306-0557

[bodybusiness.com](http://bodybusiness.com)  
[facebook.com/bodybusiness](http://facebook.com/bodybusiness) | [twitter.com/gotbodybusiness](http://twitter.com/gotbodybusiness)

## Constable's Notebook – January 2010

By Constable Bruce Elfant

“The actual enumeration shall be made within three years after the first meeting of the Congress of the United States, and within every subsequent term of 10 years, in such manner as they shall by law direct.” – Article I, Section 2, U S Constitution

The first enumeration (Census) began on Monday, August 2, 1790, little more than a year after the inauguration of President Washington and shortly before the second session of the first Congress ended. It showed that 3,929,326 people were living in the United States of which 697,681 were slaves. The largest cities were New York City with 33,000 inhabitants and Philadelphia, with 28,000.

The 2000 Census found that since 1790 the United States population has increased 75 fold to more than 281 million people. The federal government uses Census data to determine congressional district boundaries and allocate more than 400 billion dollars to communities for roads, hospitals, schools, senior centers, emergency services, etc. Census officials estimate that each person counted is worth about \$1,300 in federal which means that 769 Travis County counted residents are worth about \$1 million in federal dollars.

City and county officials believe that Travis County was undercounted during the last Census in 2000, and as a result, lost out on hundreds of millions of dollars in federal assistance for needed

projects and services. This year Austin Mayor Lee Leffingwell and Travis County Judge Sam Biscoe appointed Judge Eric Sheppard and me to co-chair the Census Complete Count Committee. We plan to engage community, neighborhood and religious organizations, non profit agencies and any entities that work in areas that are historically undercounted.

Making sure you are counted is easy, it's safe and it's important. In mid March the U S Census Bureau will send out a short ten question survey to every address in the nation that should be mailed back by April 1. The Census Bureau is essentially taking a snapshot of where people are on April 1, 2010 so students and others who may not consider themselves permanent residents of Travis County should complete the census form for the address where they reside on April 1. For addresses where no response has been received, census workers who have been screened will knock on doors in an attempt to ensure that everyone is counted. Census forms are available in 59 languages, large print and Braille. Survey results are strictly confidential and may not be shared with any government agency.

If you do not receive a census form they will be available at any city or county office or by calling 866-872-6868. More information

*(Continued on Page 5)*

# PROMOTE YOUR BUSINESS *in Style!*

- BUSINESS CARDS / BUSINESS CARD MAGNETS / MAGNETS
- POST-IT® NOTES / CUBES & MEMO PADS / DECALS
- BUMPER STICKERS / MEMBERSHIP CARDS & ID BADGES
- PERSONALIZED WRITING INSTRUMENTS / CALENDARS
- HEALTHCARE PROMOTIONS / DRINKWARE & KOOZIES®
- NEWSLETTERS / BOOKLETS / FLYERS
- ENVELOPES / LETTERHEADS / RUBBER STAMPS
- BUSINESS FORMS / AND MUCH MORE....

**NEED AN ADVERTISING SPECIALITY ITEM?**

**1-888-687-6444 ext. 24**

*Quality*  
PRINTING COMPANY

*Experience Matters*  
Doing business for  
30+ years.



## Constable's Notebook -

(Continued from page 4)

about the census may be obtained at <[www.census.gov](http://www.census.gov)>. If you wish to assist the Census Complete Count Committee or have questions please contact me at 854-9100 or [bruce.elfant@co.travis.tx.us](mailto:bruce.elfant@co.travis.tx.us).

In Travis County everyone counts and everyone should be counted!

## HPWBANA Board Meetings

Please attend our next monthly meetings:

Monday, February 15, 2010

The Crenshaw's Cottage (note change in normal location) 7:00-8:30 pm

The HPWBANA Board meets on the 3rd Monday of each month except December. Meetings are held from 7:00 – 8:45 p.m. at the Yarborough Library, 2200 Hancock Drive. All neighbors are invited to attend. [www.hpwbana.org](http://www.hpwbana.org)

## Grease

Fats, oils, and grease aren't just bad for your arteries and your waistline; they're bad for your sewer too. Grease coagulates or hardens as it cools. It is sticky and it clings to anything it comes in contact with. It likes the cool rough inside walls of sewer pipes. As sticky grease builds up in your drains and sewer pipes, additional debris attaches to it further narrowing the diameter of the pipe. Eventually, this hardened mass of grease and debris forms a blockage or plug and the sewer overflows or backs up. Depending upon where the blockage forms, this may mean a nasty, expensive fix inside your home, raw sewerage overflowing into our parks, yards, and streets where our children play, damage to the city sewer infrastructure, or damage to our environment - just to name a few of the consequences.

The Austin Water Utility is asking for our help to stop grease from invading and clogging drains and sewer pipes. Last year, the City of Austin Water Utility responded to over 54 grease-related sewer backups. Repairs cost an estimated \$38,000. This cost does not include the thousands of dollars individuals spent to fix damage caused by clogged drains and sewer pipes inside their homes.

What can you do to help? The easiest way to solve the grease problem is to keep it out of the sewer system in the first place:

### 1. Don't pour grease down your sink or toilet:

The City of Austin Water Utility suggests that we "Put used fat, oil and grease in a foiled lined bag, such as a foiled coffee bag or a used soup or vegetable can." After the grease has cooled and solidified, place it in a sealable plastic bag and place it in the trash. If you generate large amounts of used cooking oil such as used when frying turkeys, reuse or recycle it"

(Continued on Page 6)

## The perfect church for people who aren't.

The Purity Code	Sundays	9:30 am (parents of students)
Grief Share	Sundays	11:00 am
Soul Mates	Sundays	11:00 am (seriously dating, engaged, newlywed)
Home Alone	Sundays	11:00 am (empty nesters)
Family Walk	Sundays	11:00 am (parents)
Celebrate Recovery	Mondays	7:00 pm
Esther <i>Beth Moore</i>	Wednesdays	9:15 am or 6:30 pm (women)
Ephesians <i>Kay Arthur</i>	Wednesdays	9:15 am or 5:30 pm (women)

### Sunday Morning Schedule

9:30 . Blended Worship | 11:00 . Contemporary Worship | 9:30 & 11:00 . Bible Life Groups (all ages)

**Great Hills Baptist Church | [www.ghbc.org](http://www.ghbc.org) | 10500 Jollyville Road . Austin, TX . 78759 | 512.343.7763**

## HPB HAMILTON•PYLE•BOWMAN CERTIFIED PUBLIC ACCOUNTANTS

Hamilton, Pyle & Bowman, LLP  
8303 N. Mopac Expy • Suite A-120 • Austin TX 78759  
512.671.771 • [www.hpbcpa.com](http://www.hpbcpa.com)

# Highland Park West Balcones Area

At no time will any source be allowed to use the HPWBANA Newsletter contents, or loan said contents, to others in anyway, shape or form, nor in any media, website, print, film, e-mail, electrostatic copy, fax, or etc. for the purpose of solicitation, commercial use, or any use for profit, political campaigns, or other self amplification, under penalty of law without written or expressed permission from the HPWBANA and Peel, Inc. The information in the HPWBANA Newsletter is exclusively for the private use of HPWBANA Neighborhood residents only.

DISCLAIMER: Articles and ads in this newsletter express the opinions of their authors and do not necessarily reflect the opinions of Peel, Inc. or its employees. Peel, Inc. is not responsible for the accuracy of any facts stated in articles submitted by others. The publisher also assumes no responsibility for the advertising content with this publication. All warranties and representations made in the advertising content are solely that of the advertiser and any such claims regarding its content should be taken up with the advertiser.

\* The publisher assumes no liability with regard to its advertisers for misprints or failure to place advertising in this publication except for the actual cost of such advertising.

\* Although every effort is taken to avoid mistakes and/or misprints, the publisher assumes no responsibility for any errors of information or typographical mistakes, except as limited to the cost of advertising as stated above or in the case of misinformation, a printed retraction/correction.

\* Under no circumstances shall the publisher be held liable for incidental or consequential damages, inconvenience, loss of business or services, or any other liabilities from failure to publish, or from failure to publish in a timely manner, except as limited to liabilities stated above.

## Grease - (Continued from Page 5)

### 2. Don't run hot water to make grease go down the drain!

No amount of hot water keeps grease, oil, or other fats from eventually congealing. Once it goes into the sewer and cools, it sticks to the walls of the pipes and creates an expensive and messy problem of sewer backups - for you, for your neighbors and for the creeks and rivers in your neighborhood.

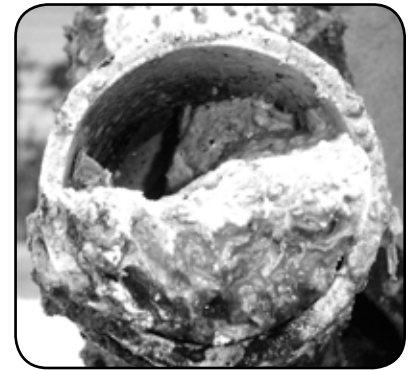
### 3. Home garbage disposals contribute to the problem:

These units only shred solid materials into smaller pieces and do not prevent grease from going down the drain. The shredded solids are part of the debris that clings to the congealed grease to form plugs.

### 4. Degreasers:

Commercial additives, including detergents that claim to dissolve grease may pass grease down the line and cause problems in other areas.

For additional information go to <http://www.cityofaustin.org/water/grease.htm>



## PROFESSIONAL PET SITTING & DOG WALKING SERVICES

Offering Reliable, Loving Care for your Pets, When you Can't

We're reliable, trained pet care professionals who are pet parents ourselves, so we understand what you and your pets need. Every Fetch! professional is bonded and insured.



**10% OFF**  
DISCOUNT CODE: PEEL

Private Dog Walks • Cat & Small Pet Visits  
Off-leash Dog Exercise • In-home Pet Sitting  
Cage-Free Boarding • Dog Day or Evening Care  
Pet Taxi • Satisfaction Guaranteed



We've got your tail covered.™

512-879-4174  
[www.FetchPetCare.com](http://www.FetchPetCare.com)  
Belly rubbing & ear scratching at no additional cost!

## AUSTIN TELCO FEDERAL CREDIT UNION

512.302.5555  
[WWW.ATFCU.ORG](http://WWW.ATFCU.ORG)



**15 METRO LOCATIONS**  
**FREE CHECKING**  
**250+ FREE ATMs**



### HOME EQUITY LOANS

PLUS NO CLOSING COSTS\*\*

10 YEAR FIXED	<b>4.79%</b> *
15 YEAR FIXED	<b>5.09%</b> *
20 YEAR FIXED	<b>5.59%</b> *

### COMM. REAL ESTATE LOANS

20 YR. AMORTIZATION/NO PRE-PMT. PENALTY

5 YEAR FIXED	<b>5.65%</b> ***
10 YEAR FIXED	<b>5.85%</b> ***
15 YEAR FIXED	<b>6.10%</b> ***

### AUTO LOANS

NEW OR USED

60 MONTHS	<b>3.59%</b> *
66 MONTHS	<b>3.69%</b> *
72 MONTHS	<b>3.89%</b> *

### MONEY MARKET ACCOUNT

MINIMUM DAILY BALANCE OF \$2,000 REQUIRED

\$25,000 TO \$74,999	<b>1.26%</b> ****
\$75,000 TO \$124,999	<b>1.36%</b> ****
\$125,000 AND ABOVE	<b>1.51%</b> ****

### REG. CERTIFICATE OF DEPOSIT

MINIMUM DEPOSIT OF \$1,000 REQUIRED

6 MONTHS	<b>1.61%</b> ****
12 MONTHS	<b>1.86%</b> ****
24 MONTHS	<b>2.17%</b> ****

### JUMBO CERTIFICATE OF DEPOSIT

MINIMUM DEPOSIT OF \$95,000 REQUIRED

6 MONTHS	<b>1.71%</b> ****
12 MONTHS	<b>1.96%</b> ****
24 MONTHS	<b>2.27%</b> ****

\*ANNUAL PERCENTAGE RATE. ALL RATES ARE EXPRESSED "AS LOW AS". ACTUAL RATE MAY VARY DEPENDING ON CREDIT QUALIFICATIONS. \*\*AUSTIN TELCO WILL PAY ALL STANDARD CLOSING COSTS ON HOME EQUITY LOANS BELOW \$100K. ADDITIONAL NON-STANDARD FEES WILL BE THE RESPONSIBILITY OF THE MEMBER. \*\*\*RATE APPLIES TO 1ST LIEN COMMERCIAL REAL ESTATE LOANS WITH A LOAN TO VALUE OF 80% OR LESS. CONSTRUCTION/DEVELOPMENT LOAN RATES/TERMS MAY BE DIFFERENT. NO PRE-PAYMENT PENALTY. \*\*\*\*ANNUAL PERCENTAGE YIELD. PENALTIES FOR EARLY WITHDRAWAL MAY APPLY. REGULAR - A MINIMUM DEPOSIT OF \$100K IS REQUIRED. JUMBO - A MINIMUM DEPOSIT OF \$95000 IS REQUIRED. ALL APRS, APYS AND TERMS ARE SUBJECT TO CHANGE WITHOUT NOTICE. PLEASE CALL FOR DETAILS. THIS CREDIT UNION IS FEDERALLY INSURED BY THE NATIONAL CREDIT UNION ADMINISTRATION.

**It's Dues Renewal Time!**  
**Support HPWBANA with your Membership**

It's important for neighbors to join and stay active in HPWBANA. A growing membership makes us a stronger force with the City of Austin and allows us undertake projects that directly contribute to the quality of life in our neighborhood:

- Neighborhood Beautification Efforts
- Easter Egg Hunt, July 4th Parade and Picnic
- Advocates for Neighborhood on City Issues
- Strengthen Neighborhood Safety Network

We need your support! Please renew your membership or become a new member of HPWBANA today. Send \$15 for a Family membership or \$10 for a Single-Member Household membership (only one adult in household) to:

**HPWBANA, PO Box 26101, Austin, TX 78755**

Name \_\_\_\_\_ Name of Second Adult \_\_\_\_\_

Address \_\_\_\_\_

Home Phone \_\_\_\_\_ Email \_\_\_\_\_

*Questions about membership?*

*Please contact Andrea Torres at 302-4294 or via email at [andreatorres11@yahoo.com](mailto:andreatorres11@yahoo.com)*

**Advertise YOUR business  
to YOUR neighbors for  
less than 6¢ per home.**

*Effective Advertising, Done Right.*

*Call today to Reserve your space.*

**Peel, Inc.**  
COMMUNITY NEWSLETTERS

**512-263-9181**

**[www.PEELinc.com](http://www.PEELinc.com)**

HP



# WELCOME TO *good health*



Take the first step toward your child's good oral hygiene—a vital part of your child's development. Your child's first visit is recommended between 12 and 18 months of age.

### YOUR CHILD, OUR PRIORITY

Your child is provided with the highest level of dental care in a friendly, caring and fun environment. Your child's dental needs will be evaluated regularly to provide the highest level of prevention and treatment.

### SMILES ALL AROUND

You are invited to visit our office or our website for more information. Our fun and friendly office is specially designed with kids in mind, including video games and toys for all ages.

Discover the difference. As always, thank you for your continued referrals to family and friends. We hope to see you soon.

*healthy smiles*

**\$50 OFF**  
NEW PATIENT EXAM,  
CLEANING, FLUORIDE.

Must present coupon for discount.  
Expires 3-31-10 Highland Park West Balcones

*are our specialty*



## SHERWOOD

### PEDIATRIC DENTISTRY

Stephen Sherwood, DDS - Brad Singleton, DDS

6500 North MoPac, Bldg. II, Suite 2206  
Austin, Texas 78731  
Tel: 512.454.6936 Fax: 512.454.0437  
www.drsherwood.net



### OFFICE HOURS

Convenient office hours are  
Monday 9 am - 5 pm  
Tuesday - Thursday 8 am - 5 pm  
Fridays are reserved for surgical procedures.

