

HOME *on the* RANCH



Brookside • Casitas • Champions • Creekside • Enclave
Granite Shoals • Glenfield • Greens Highlands • Landing • Morningside
Overlook • Parkside • Reserve • Waters Edge • Westchester



March 2010

OFFICIAL NEWSLETTER OF THE AVERY RANCH HOA

Volume 4, Issue 3

CALENDAR

HOA BOARD MEETINGS

Next meeting - Monday, March 8th

Note that board meetings have changed to the 2nd Monday of each month at 7pm, except for holidays. Board members will meet on these dates to discuss issues related to Avery Ranch. If you have an item you would like discussed during one of these meetings, please contact Alliance Association Management, Inc. at 347-2888. The location for meetings is at the Glenfield Amenity Center.

UPCOMING EVENTS:

Dog Day Afternoon - Saturday, March 20th 2pm - 5pm at the MAC (Morningside Amenity Center)

Avery Ranch residents, get your pets ready for some dog gone good fun at our Dog (Pet) Day Afternoon! All domestic pets are welcome. Enter your pet in our pet parade, see performing dog acts and training tips, get a micro chip ID for your pet, receive a free photo of your pet, receive a free "Toe" trim, or adopt a dog or cat from local rescue groups. You will also be able to chat with vendors who provide products & services for animals. Please see the flyer posted in this edition for additional details and as always you can check our averyranchHOA.com website for the latest news on our events.

(Continued on Page 3)

Laughter

Laughter is like "internal jogging". When we laugh, our muscles are activated and oxygen floods the blood. Humor changes our brain chemistry. It releases endorphins that increase our sense of well-being and make us less sensitive to pain. That is why we work on developing a playful attitude in our children and teachers.

Best of all, Humor is cheap. Humor is free, fat-free, carbohydrate free, salt-free, non-taxable, environmentally safe and does not require batteries. We help our children find humor in daily situations.

By Sugandha Jain

(Pics Continued on Page 4)



*See
Photos In
Color At
Peelinc.com*

HOME ON THE RANCH

IMPORTANT NUMBERS

EMERGENCY NUMBERS

EMERGENCY911
Fire.....911
Ambulance.....911
Sheriff – Non-Emergency..... 512-943-1300

SCHOOLS

ROUND ROCK ISD

Patsy Sommer Elementary 704-0600
..... 16200 Avery Ranch Blvd.
Cedar Valley Middle School..... 428-2300
..... 8139 Racine Trail
McNeil High School..... 464-6300
.....5720 McNeil Dr.

LEANDER ISD

Rutledge Elementary..... 570-6500
..... 11501 Staked Plains Dr.
Henry Middle School 570-3400
.....100 N. Vista Ridge Dr.
Vista Ridge High School..... 570-1800
.....200 S. Vista Ridge Dr.

UTILITIES

City of Austin Water 512-494-9400
Perdernal Electric..... 512-219-2602

TEXAS GAS SERVICE

Custom Service..... 1-800-700-2443
Emergencies..... 512-370-8609
Call Before You Dig..... 512-472-2822

AT&T

New Service 1-800-464-7928
Repair 1-800-246-8464
Billing..... 1-800-858-7928

TIME WARNER CABLE

Customer Service 512-485-5555
Repairs..... 512-485-5080
Solid Waste Servies..... 512-494-9400

NEWSLETTER INFO

EDITOR

Teresa Miller arnewsletter@hotmail.com

PUBLISHER

Peel, Inc. 512-263-9181
Advertising..... advertising@peelinc.com

BOARD MEMBERS

PRESIDENT

Glen Colbyglen@texas.net

VICE PRESIDENT

Gary Wilkswilks@swbell.net

SECRETARY

April Aguren april.aguren@averyranchhoa.com

TREASURER

Clint Millerclintonwmiller@gmail.com

RESIDENT BOARD MEMBER

Mark Bittman mbarhoa@hotmail.com

RESIDENT BOARD MEMBER

Marc Bouchermbouchertx@sbcglobal.net

RESIDENT BOARD MEMBER

Khris Mire khirmire@yahoo.com

RESIDENT BOARD MEMBER

Joe Pero.....jpn2004@hotmail.com

RESIDENT BOARD MEMBER

Steve Roebuck..... steveroe@swbell.net

RESIDENT BOARD MEMBER

Pat Wimberly..... PatWimberly@gmail.com

D.R. HORTON

Tom Moody..... TEMoody@drhorton.com

AVERY RANCH HOA WEBSITE

Visit the Avery Ranch HOA website at
www.AveryRanchHOA.com

FOR QUESTIONS OR CONCERNS

Contact our Property Manager & HOA Board for any
questions/concerns about your neighborhood at
GetHelp@AveryRanchHOA.com

DON'T WANT TO WAIT FOR THE MAIL?

View the current issue of Home on the Ranch on the 1st
day of each month at www.PEELinc.com

Classified Ads

Personal classifieds (one time sell items, such as a used bike...) run
at no charge to Avery Ranch residents, limit 30 words, please e-mail
arnewsletter@hotmail.com.

Business classifieds (offering a service or product line for profit)
are \$50, limit 40 words, please contact Peel, Inc. Sales Office @
512-263-9181 or advertising@PEELinc.com.

HOME ON THE RANCH

Calendar - (Continued from Cover Page)

Egg Hunt and Picnic - Saturday, March 27th - 10am at the MAC (Morningside Amenity Center)

Don't miss our annual egg hunt and picnic!! Have your picture taken with the Ester Bunny! Hot dogs, chips and drinks will be available.

Please Note: The Avery Ranch Social Committee needs volunteers to help with both events. Please contact the following Social Committee members for information. The kids really enjoy these events, please help us ensure a fun filled time for them!!

- Teresa Miller at teresakmiller@hotmail.com for the pet event.
Pet event volunteer opportunities include helping with the pet parade (registration and monitoring)
- Jean Mayo at jmayo002@austin.rr.com for the egg hunt event.
Egg Hunt event volunteer opportunities include helping to hide eggs in the park.

We want to hear from you....what events would you like to have in Avery Ranch? Let us know. Contact our Avery Ranch Social Committee Chairperson Marc Boucher at mbouchertx@sbcglobal.net.

GET INVOLVED

In Your Community

COMMITTEE: AR Social Committee

DESCRIPTION: Newsletter, Fun, Activities, etc.

COMMITTEE CHAIR: Marc Boucher

CONTACT INFO: mbouchertx@sbcglobal.net

COMMITTEE: AR Playgroup

DESCRIPTION: Playtime for kids...adult-time for parents

COMMITTEE CHAIR: April Aguren

CONTACT INFO: april.aguren@averyranchhoa.com

Neighborhood News

The TCC (Texas Cave Conservancy) gives the tours of their cave, which is located near Morningside. The cave tour schedule can be found at: <http://www.texascaves.org>, click the Cave Day link.

Tired of Hard-Bad Tasting Water?

WATER SOFTENERS AND REVERSE OSMOSIS SYSTEMS



- ◆ Hard water scale on faucets & appliances?
- ◆ Unpleasant taste & chemical odors?
- ◆ Soap scum build up, spots on dishes?
- ◆ Stains in sinks, tubs, showers & toilets?
- ◆ Dry hair, skin and scalp?



GOING GREEN!

NOW AVAILABLE!

**Salt Free and
Potassium Free Systems**

***LEASE A WATER SYSTEM**

**for \$4.95
a month**

**90 DAY
TRIAL PERIOD**

**Call for More Details*

**www.TexasWaterSolutions.net
rob@texaswatersolutions.net**

512-301-4900

HOME ON THE RANCH

Laughter- (Continued from Cover Page)



Coming Soon.....

A B A C U S

SCHOOL OF **A U S T I N**

Enrolling Now - Opening March 2010

Registration Fee Waived Until Fall 2010. Based Upon Availability.

Infant, Toddler, Preschool, Pre-Kindergarten, & Private Kindergarten

- High Reach Accredited Curriculum
- Locally Owned and Operated
- Low Teacher to Child ratio
- Full and Part Time Schedules
- Private Kindergarten
- After School & Summer Camp
- Nutritious Meals and Snacks

*Computer Lab, Library, Indoor Gyms,
Art Studio, Heated Swimming Pool,
& Dancing Fountains for Toddlers*

Extracurricular Activities: Martial Arts, Sportball, Music,
Piano, Gymnastics, Dance, & Yoga

14115 Avery Ranch Blvd. • 512.381.2200 • www.abacusschoolofaustin.com

ADVERTISING

Please support the businesses that advertise in Home on the Ranch. Their advertising dollars make it possible for all Avery Ranch residents to receive the monthly newsletter at no charge. If you would like to support the newsletter by advertising, please contact our sales office at 512-263-9181 or advertising@peelinc.com. The advertising deadline is the 8th of each month for the following month's newsletter.

SEND US YOUR

Event Pictures!!

Do you have a picture of an event that you would like to run in Home on the Ranch? Send it to us and we will publish it in the next issue. Email the picture to arnewsletter@hotmail.com. Be sure to include the text that you would like to have as the caption. Pictures will appear in color online at www.PEELinc.com.



Business Classified

JOIN CAMP DOUBLECREEK IN CELEBRATION OF OUR 40TH YEAR IN SPRING BREAK (March 15-19) or Summer camps (June 3 – August 20). Camp Doublecreek is an activity based camp in Round Rock with FREE transportation from 12 convenient pick-up points. The mission is that “every camper leaves at the end of the day knowing someone believes in him/her”. Register today at www.campdoublecreek.com.

SOUTHERN PAINTING – FREE ESTIMATES. INTERIOR AND EXTERIOR. Bonded and insured. Over 50,000 homes painted in 20 years. Excellent references. Find us on Facebook as “Southern Painting Austin North”. Visit our local office website at www.Scenewright-Contracting.com for current specials. 716-1114.

Classified Ads

BUSINESS CLASSIFIEDS (offering a service or product line for profit) are \$50, limit 40 words, please contact Peel, Inc. Sales Office @ 512-263-9181 or advertising@PEELinc.com.



You're in Luck!

BANG

SALON & DAY SPA

8701 W. Parmer Lane • In the Artisan

514-1141

www.BangAustin.com

JOIN US ON FACEBOOK

FOLLOW US ON TWITTER

FREE Haircut
with any color or highlight service

*** valid thru March 31, 2010 with this ad ***

cuts • color • curl • prom styles • facials • peels • waxing • & more!



Cedar Park
EYE CARE

Dr. Dennis R. McCarty
Doctor of Optometry

- Diabetic Eye Exams
- Affordable Eye Care for the Entire Family
- Complete LASIK Management
- Minor Emergency Eye Care
- Bifocal Contact Lenses
- Designer Eyewear Including: Prada, Calvin Klein, Nike, Coach, Lacoste, Nautica and Jhane Barnes
- Kid's Eyewear: Nike, Thalia, Disney, X Games Hushpuppies
- Optomap enables Dr. McCarty to perform eye examinations without dilation drops for all ages

\$59 KIDS EXAM

kids under 12; some restrictions apply; one per house not valid with other offers exp. 3/22/10

Now offering 1 hr. service on glasses!

We are pleased to offer non-Rx polarized lenses for any frame for \$99! Some restrictions apply. Call or come in for details!



Cedar Park Eye Care - 302 S. Bell



249-0808

(Just N. of Buttercup Creek Blvd; behind Dominos)

www.cedarparkeyecare.com

HOME ON THE RANCH

The Freiker (FREquent bIKER) Program

By Jen Ohlson

Friday February 5th Sommer Elementary became the first school in Texas to use a revolutionary bike-to-school program to encourage transportation alternatives to and from school. This RRISD school launched a new program that supports and encourages students to ride their bikes to school. The Freiker (FREquent bIKER) program uses innovative radio frequency ID (RFID) technology to automatically record each child's bike trip to school. This result will reduce traffic congestion around the school, while also addressing health problems such as obesity and diabetes that are at crisis levels in Texas school children. Schools utilizing the Freiker program are reporting additional benefits such as improved attendance, better test scores, and a greater sense of community.

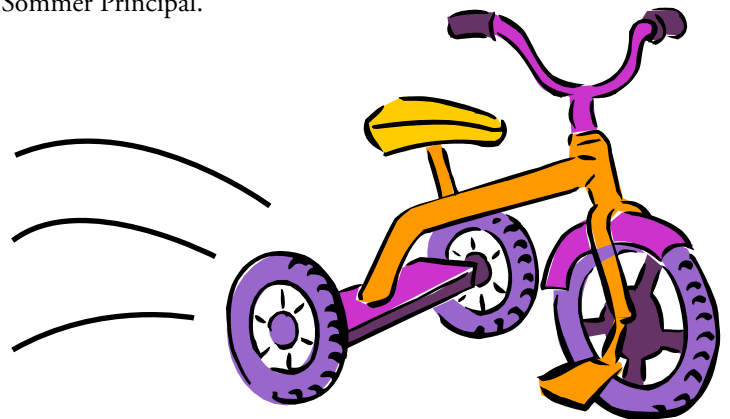
Under sunny skies and warm temperatures, the program kicked off with over 300 students participating in a Bike Parade around the school, led by APD Chief Art Acevedo, RRISD Superintendent Dr. Jesus Chavez, Sommer Principal Mark Pratz, Councilman Chris Riley and other celebrities. Following the parade, helmets were distributed, while volunteers from Bicycle Sport Shop, Austin Cycling Association and Trek Bikes offered bike safety checks and helmet fitting, followed by a bike Rodeo. RFID chips were distributed to all participants at the event. Freiker partners and supporters in attendance were Trek Corporate Director of Advocacy and Public Policy - Krista Rettig, CEO of Freiker - Tim Carlin, All About Health CEO - Jen Ohlson, Sommer Elementary Principal - Mark Pratz, Austin Cycling Association, and Director of Advocacy for Bicycle Sport Shop - Leslie Luciano.

The Freikometer (or "Zap" as it will be known) began recording student's trips on Monday, February 8th as they arrived for school. This data is stored in an online database where it forms the basis for a variety of incentive programs that rewards regular participation - a great incentive to creating healthy habits. which Freiker believes is a key to changing habits.

The bike program is part of a more viable push for physical education at schools that better aligns with a district's overall goals

in regard to an enhanced PE and Health model for the 21st Century said Jen Ohlson, the director of a program called "All About Health." "All About Health" uses technology — including heart rate monitors during P.E. classes — to encourage children to take care of themselves. The program collects all the data - from Freiker to heart rate monitors and other collection tools - and stores it in a child's individual health portfolio. Many of Sommer's students are already using the heart rate monitors. "The crisis we collectively face in this nation in regards to childhood obesity demands ground-breaking ways to solve these issues. Freiker and All About Health are programs making huge steps in the right direction to make a real difference in an individual's health and well being for a lifetime, all while perfectly aligning with a district's overall goals and mission in regard to an enhanced PE and Health model for the 21st Century." Ohlson said.

Principal Mark Pratz and his staff were delighted to be chosen as the first school in Texas to implement the technology. Once selected, the entire Sommer staff and the school's supporting organizations such as the PTA got behind the effort to make it as successful as possible. "We are thrilled to be a part of promoting student health and safety. Partnering with Freiker and All About Health seems like a perfect way to support those great values and engage students in fun and good life-long healthy habits" commented Mark Pratz, Sommer Principal.



FINE EYEWEAR

Eyecare and Sunglass Boutique

Higher Quality. Better Vision.™



Introducing a new exclusive to our collection of eyewear!

Our Vision is to provide an Eye care experience like no other...

Service and Quality is our highest priority.



Whitestone Blvd (FM 1431)

Panner Lane

Home Depot

Fine Eyewear

HEB

2800 E. Whitestone Blvd Suite 210 • 512.260.9779 • www.FineEyewear.Net

FINANCIAL FOCUS

When Evaluating Investments, Look at Value – Not Just Price

Most investors pay a great deal of attention to the price of their investments — yesterday's price, today's price, tomorrow's price, next year's price and so on. And that's understandable, because we always want the prices of our investments to rise. Yet, if you focus too much on prices, you could end up making some costly mistakes.

Why? Because price-driven behavior is emotional behavior — and as an investor, you're much better off making decisions with your head, not your heart. Suppose, for example, that you've seen a steep decline in the price of one of your investments. After a while, you may feel that you just can't take it anymore and you decide to "cut your losses" by selling the investment. Conversely, you may have an investment that has gone up and up — and to grab even bigger gains, you buy more shares.

Both these decisions could backfire on you. When you sold the investment whose price had fallen, you might find yourself on the investment "sidelines" if that same investment starts to turn around. And when you throw more money at an investment whose price has skyrocketed, you're betting against history — because no investment goes up forever. Furthermore, in both cases, your emotions will have

led you to violate one of the guidelines of investing: buy low and sell high.

But apart from the tactical errors you may make when you over-concentrate on price movements, you're also ignoring another key characteristic of investments — their value.

Traditionally, an investment's "value" has been largely defined as whether or not it's considered "expensive" or "cheap." That's why many investors take a close look at a stock's price-to-earnings ratio (P/E). Generally speaking, a high P/E means a stock is more expensive, relative to its earnings, than a stock with a low P/E. Investors may be willing to pay more for the high P/E stocks because they feel these companies will be worth more in the future.

But P/E doesn't tell the whole story of investment value. Any individual investment may have value to you because it can help you diversify your holdings. And while diversification, by itself, can't guarantee a profit or protect against a loss, it can help you reduce the effects of volatility on your portfolio. For instance, if your portfolio is heavy with stocks, the presence of some bonds — even those whose

(Continued on Page 9)



AUSTIN TELCO

FEDERAL CREDIT UNION

512.302.5555

WWW.ATFCU.ORG

STONE HILL TOWN CENTER
NOW OPEN IN PFLUGERVILLE!



FREE SECOND CHANCE CHECKING

FREE PERSONAL CHECKING

FREE BUSINESS CHECKING

MEMBER SINCE 1968

NCUA



HOME EQUITY LOANS <small>PLUS NO CLOSING COSTS**</small>	COMM. REAL ESTATE LOANS <small>20 YR. AMORTIZATION/NO PRE-PMT. PENALTY</small>
10 YEAR FIXED 4.79%*	5 YEAR FIXED 5.65%***
15 YEAR FIXED 5.09%*	10 YEAR FIXED 5.85%***
20 YEAR FIXED 5.59%*	15 YEAR FIXED 6.10%***
AUTO LOANS <small>NEW OR USED</small>	MONEY MARKET ACCOUNT <small>MINIMUM DAILY BALANCE OF \$2,000 REQUIRED</small>
60 MONTHS 3.59%*	\$25,000 TO \$74,999 1.16%****
66 MONTHS 3.69%*	\$75,000 TO \$124,999 1.26%****
72 MONTHS 3.89%*	\$125,000 AND ABOVE 1.41%****
REG. CERTIFICATE OF DEPOSIT <small>MINIMUM DEPOSIT OF \$1,000 REQUIRED</small>	JUMBO CERTIFICATE OF DEPOSIT <small>MINIMUM DEPOSIT OF \$95,000 REQUIRED</small>
6 MONTHS 1.36%****	6 MONTHS 1.46%****
12 MONTHS 1.56%****	12 MONTHS 1.66%****
24 MONTHS 2.17%****	24 MONTHS 2.27%****

*ANNUAL PERCENTAGE RATE. ALL RATES ARE EXPRESSED "AS LOW AS". ACTUAL RATE MAY VARY DEPENDING ON CREDIT QUALIFICATIONS. **AUSTIN TELCO WILL PAY ALL STANDARD CLOSING COSTS ON HOME EQUITY LOANS BELOW \$100K. ADDITIONAL NON-STANDARD FEES WILL BE THE RESPONSIBILITY OF THE MEMBER. ***RATE APPLIES TO 1ST LIEN COMMERCIAL REAL ESTATE LOANS WITH A LOAN TO VALUE OF 80% OR LESS; CONSTRUCTION/DEVELOPMENT LOAN RATES/TERMS MAY BE DIFFERENT. NO PRE-PAYMENT PENALTY. ****ANNUAL PERCENTAGE YIELD. PENALTIES FOR EARLY WITHDRAWAL MAY APPLY. *REGULAR - A MINIMUM DEPOSIT OF \$1,000 IS REQUIRED. *JUMBO - A MINIMUM DEPOSIT OF \$95,000 IS REQUIRED. ALL APRS, APYS AND TERMS ARE SUBJECT TO CHANGE WITHOUT NOTICE. PLEASE CALL FOR DETAILS. THIS CREDIT UNION IS FEDERALLY INSURED BY THE NATIONAL CREDIT UNION ADMINISTRATION.



Up to
four weeks
tuition credit!!

**Primrose School
of Round Rocks**

512.733.2020

**Primrose School
of Round Rock at Forest Creek**

512.828.5777

 **Primrose Schools**
The Leader in Educational Child Care®

Accreditation
you can trust.

- Proprietary *Balanced Learning*® curriculum
- Music, Spanish, Computer Technology

Each Primrose School is privately owned and operated. Primrose Schools, Balanced Learning, and The Leader in Educational Child Care are trademarks of Primrose School Franchising Company. ©2010 Primrose School Franchising Company. All rights reserved.

Financial Focus -

(Continued from Page 8)

market price has fallen because interest rates have risen — can help reduce the impact of a downturn that primarily affects stocks.

Clearly, the value of any investment has several dimensions — any or all of which may be valuable to you as you pursue your goals. So, as you build, maintain and adjust your portfolio over time, keep an eye on the changing prices of your investments — but don't overlook their true value.

By Matt Smith

AVERY RANCH SOCIAL COMMITTEE

Dog (Pet) Day Afternoon

Avery Ranch residents, get your pets ready for some dog gone good fun at our Dog (Pet) Day Afternoon! All domestic pets are welcome. Saturday, March 20th 2pm – 5pm at the Morningside Amenity Center



- Enter your pet in our pet parade – Win awards and prizes for the best dressed, best behaved, best groomed and more! Entry fee – Please bring pet food item for donation to animal rescue league.
- Enjoy the performing dog act and training tips from Paws 4 Freestyle & Happy Puppy Tutoring.
- Get a micro chip ID for your pet for only \$25 along with free samples of veterinarian supplies from Avery Ranch Animal Hospital.
- Receive a free photo of your pet, courtesy of Paw - Parazzi Photography.

- Receive a free “Toe” trim courtesy of Texas Cattle Dog Rescue.
- Adopt a dog or cat from local rescue groups. Receive free training DVD's, information on discount vaccinations, and low-cost spaying/neutering.

- Chat with other vendors providing information on products & services for: Pet message therapy, gourmet pet food, nutritional pet supplements, pet sitting, collars, bandannas and much, much more!

Remember, city, county and Avery Ranch leash and waste disposal ordinances must be followed. Dog owners – muzzles for your pet is highly encouraged. Owners of dogs displaying aggressive behavior will be asked to leave the premises.

I work for you.

www.ClayByrne.com

HOME ON THE RANCH

RECOVERING FROM A HARD FREEZE

Gardeners As Well As Plants!

To us homeowners and gardeners in Avery Ranch, despair generally follows a hard freeze when the first effects on our beloved plants are noted, but deeper despair follows a week or two later, and even up to a month later, when the real damage is finally revealed. Before despair leads to depression, let's look at the bright side.

Those dead looking plants most likely aren't really dead – they're just playing "possum" and waiting for spring conditions to revive. It's their natural defense mechanism to shut down under such conditions. With shrubs, use the fingernail test – scratch progressively downward until dead brown tissue becomes green live tissue. Then they can be pruned back to just above that point for regeneration. Although we are advised not to prune back more than one third of a shrub at any time, hard pruning beyond that level may be required to remove dead wood. With perennials, cutting back an inch or two from ground level will help regenerate them in spring. Root freezing is their worst fate, not death of foliage. In the case of Yuccas and Agaves, they most likely will send up pups in spring from the surviving base if the top foliage dies, unless the entire plant froze to the core, roots and all from soil being too moist.


The deep freeze kills many of the harmful insects that invade and harm our gardens so it's nature's way of keeping everything in balance. Dead growth should be removed, however, to prevent the introduction of disease organisms in decaying matter.

It is often helpful to keep records of plant performance under different stressful conditions, a journal or sort to refer to if those conditions occur again. Note micro-environments that provided just enough protection to help a plant survive beyond it's normal expectation. Also note those plants that were totally unaffected by the sub-20 degree cold and use these as base plants (the bones) for your garden.

Often, winter conditions other than the cold cause death to plants. Succulents and Cacti can only handle lower freezing temps when the ground is dry. Let's face it, we don't get a lot of rain per year in our area, but when it rains, it rains, and often at the worst possible time – just before a freeze which can be a much deadlier combination than just the freezing temperature alone.


(Continued on Page 11)

Buddy Hadley 888.880.1137
bhadley@gs.reyrey.com



2010 4Runner Limited
2010 Prius V

My name is Buddy Hadley, and as your neighbor in Avery Ranch, I'd like the opportunity to help you find a vehicle that best fits your needs.



ROUND ROCK
TOYOTA
Exit 254, Round Rock
www.RoundRockToyota.com

We also sell Honda, Hyundai, smart car, and quality Pre-Owned vehicles.

Robnett & Co. LP, CPA's & Robnett Financial, LLC
13809 N. Hwy 183, Ste. 900 • Austin, TX 78750
512-258-8584 • www.RobnettCPA.com

Work with a team that works as hard as you do for your money.

Tax season is just around the corner.....

Don't wait!

Have your taxes done early and save yourself the worry.

Limited Time Offer:

New tax clients!! Present this ad to receive
\$50 off your 2009 individual income tax return preparation!

Robnett & Co. LP, CPA's & Robnett Financial, LLC offers integrated tax and wealth management services designed to simplify your life and your finances.

*Offer valid 1/1-3/31/10. Ad must be presented at time of initial visit.
**Securities and advisory services offered through NEXT Financial Group, Inc., Member FINRA/SIPC, a registered broker-dealer and Registered Investment Adviser. Robnett & Co. LP, CPA's & Robnett Financial, LLC are not affiliated with NEXT Financial Group, Inc. NEXT Financial Group, Inc. does not provide tax advice.

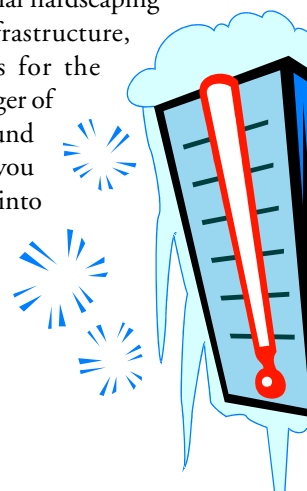
Recovering From A Hard Freeze - (Continued from Page 10)

Driving around Avery Ranch, most noticeable is dead fronds on Sagos and palm leaves. The Sagos are probably fine and just need to have the dead fronds cut off. They will produce an abundance of new fronds in early summer that will refresh the plant. Broad leafed fan palms (most likely Washingtonias) look like they have been fried, but like the Sagos, may revive in summer if the central core of the plant wasn't frozen, so just remove the dead and damaged leaves and wait until summer before proclaiming last rites. If the palm doesn't make it, try planting a different palm known to be more hardy.

The most agonizing thing for us gardeners is the long wait to see if a plant that has died back to the ground will emerge as a healthy plant in spring. This doesn't always happen. Often disease organisms attack a weakened plant when in dormancy. If a plant doesn't emerge at an expected time in spring, it is best to dig and examine roots for any signs of life, buds, live roots, etc. Any dead portions should be trimmed off before replanting. Do not fertilize any plants in spring until healthy shoots emerge and begin to mature, as without leaves for photosynthesis, chemical fertilizers can become toxic to the plant. If shrubs are just tip burned from a freeze, don't trim back until spring as that would just encourage new vulnerable growth to emerge prematurely.

Rather than seeing the damage a hard freeze brings to your ornamental garden and landscape, look at the bright side. If nothing else, you can look forward to seeing the resurrection of life anew in spring as you stroll through your yard. Also see the opportunity to improve your garden from the previous year based on what you have learned from this winter. Don't jump the gun though but wait for the right time to begin that renewal. You can cultivate soil, build up and enrich your beds, do any additional hardscaping you want to do to your garden infrastructure, research new planting possibilities for the coming year while waiting for any danger of frost and freeze to pass, generally around April 1st in central Texas. This way, you will be eager and prepared to jump into another wonderful year of gardening pleasure.

By Bob Beyer, Morningside



DON'T MISS OUT ON THE TAX CREDIT!

Don't miss out on your chance at: **\$8,000 tax credit for first time homebuyers, \$6,500 tax credit for move up sellers, and up to \$40,000 downpayment assistance!**

**Of course restrictions apply, but why not see if you qualify?*

LOCATION	MLS# / DESCRIPTION	LIST PRICE
Forest Creek	4 bed, 3.5 bath, 3 car, 3284 sq. ft./builder Homes by JD West-Custom 2010 yr. built	\$395,000
Central Austin (Pre-MLS)	3 bed, 2.5 bath, 2 car, 1508 sq. ft. (tax rcrd.)	\$249,900
3108 Carnousty St.	6618024	\$83,900
1011 Fazio Cove	6620517	\$65,000
1924 Mulligan Dr.	6697207	\$65,000

*Rica,
My wife and I are extremely pleased we found you to sell our house. You not only advised us what to do to help make it sell, you even found materials to put into our vacant house to make it easy to sell. In the slow month of December we got a contract within 2-3 weeks and sold it for near list price! What could be better?! Thank you Rica, you are GREAT!*

-D. Laird

Visit WWW.RICAGREENWOOD.COM for more listings and info

Rica Greenwood, Realtor
C: (512) 762-8697 • F: (512) 255-1019
www.ricagreenwood.com



Prudential
Texas Realty

Bright Futures Start At Rainbow Station®



Preschool and
Mother's Day Out



Nursery School



After School Program



Private Kindergarten



The Get Well Place



Our Campus

- Proprietary curriculum & values infused education
- Highly trained and qualified teachers
- State of the art campus with bright open classrooms
- Very small child/teacher ratios
- Serving children 6 weeks to 13 years
- Focus on the whole child
- Emphasis on parent/teacher communication
- Age appropriate separate playgrounds and soccer field
- Full-time and Part-time Programs available
- School nurse on-site



Rainbow Station®

11651 W. Parmer Lane, Cedar Park, TX 78613
www.rainbowstationaustin.org

512-260-9700

Call today for a tour of our school.

Now serving the following schools:

LISD: Parkside, Ronald Reagan, Cox, Rutledge / RRISD: Patsy Sommers, Cactus Ranch, Old Towne

MAÏGRAS:



Happy Hour

Another year, another great Mardi Gras Happy Hour. The turnout was good, over 90 people attended despite the cold weather. Jean-Pierre and the Zydeco Angels performed for our dancing pleasure. Thanks to Christine Bittman of AJ's Cyclery, Candy Chudakoff of Tropical Smoothie and Susan Spence of Home Warranty of America for donating door prizes. Special thanks to Bob Brady of the AR golf club & staff. If you loved this event, please tell your neighbors and plan to attend next year. Laissez les bon temps rouler!

By Jean Mayo



Brushy Creek

LANDSCAPE SERVICES

COMMERCIAL | RESIDENTIAL

Lawn Care | Lawn Service | Spring Clean Up | Mulch Installation | Aeration | Fertilization | Seasonal Color | Planting

512.970.4796 | BrushyCreekLandscape@gmail.com | www.BrushyCreekLandscape.com

Mention This Ad and Receive 10% Off Any Service

MARDI GRAS:



CALL ME to open a State Farm® IRA BEFORE APRIL 15.

A State Farm IRA is a great way to invest in your future and it could save you money at tax time. Contact me today to learn about an IRA and the many funding options available.



Linda Kay Goss
State Farm Agent
Austin, TX 78717
Bus: 512-345-4801
linda.goss.b4fk@statefarm.com



Consult your tax or legal advisor for specific advice.

statefarm.com®

AVERY ORTHODONTICS

Building Healthy Bites and Beautiful Smiles



Blair R. Barnett, DDS, MS
Specialist in Orthodontics

- Complimentary initial exam including digital x-rays and photos
- Multiple treatment options including Invisalign and Clear Braces
- Extended before and after school hours
- All insurances filed with multiple interest-free financing options
- All treatment options and procedures fully explained by Dr. Barnett



Quality, personalized care in a comfortable setting made to feel like home



512-260-0084
12171 W. Parmer Ln. Ceader Park, TX 78613

Conveniently located on Parmer Lane across from the Ranch at Brushy Creek, just North of Avery Ranch. Within 1/2 mile of Henry Middle School and Vista Ridge High School.

Why Does It Take So Long To Build Roads?

By Williamson County Commissioner Lisa Birkman

Before I was in office, I would often wonder why it seems to take forever to build a needed road. The answer is a combination of many factors, but often the longest part of the process is gaining environmental clearance from state and federal governmental agencies. Environmental clearance can take as long as three to five years, and sometimes much longer.

Several state and federal agencies are mandated to review road construction project's environmental documents: including the Texas Department of Transportation (TxDOT), the United States Fish and Wildlife Service (USFWS), Texas Parks and Wildlife (TPW), the Texas Historic Commission (THC) and the Federal Highway Administration (FHWA). Having many different agencies all review a project causes red tape that can delay a project interminably. Another problem is the process itself. For example, it is not

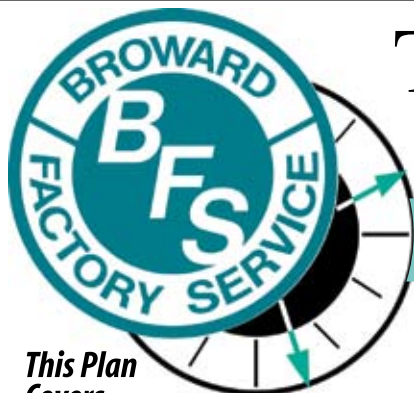
uncommon for one reviewer to send back comments on the environmental document that must be addressed. After that is done, the document is sent back to the agency. Often, a different reviewer will look it over and bring up additional comments that were not mentioned the first time, causing those to also be addressed. Currently, state law does not limit the amount of time TxDOT has to review projects.

A case in point is the extension of O'Connor Road from RM 620 to SH 45. This approximately 1.4 mile extension has been planned since 1999. It was approved by the voters of Williamson County in 2000 for inclusion as a project funded by road bonds. The road would cross rangeland with very few homes nearby and would relieve traffic on one of the most congested roads in the county, RM 620. Yet, for ten years, we have not been able to get environmental clearance to build the road because the area in which

the road would be constructed contains caves that are home to several blind bugs that are listed by the federal government as being endangered.

To try to address the environmental impacts of the county's explosive growth and development, Williamson County worked for over five years to obtain a federally permitted plan to protect these and other species by setting aside land as preserves where these species could live. I have served as president of the Williamson County Conservation Foundation, and led this effort. However, officials with the federal government informed us after we obtained the permit, that it could not be used for any federal road projects, only for local ones, which is difficult to understand since the plan actually achieves the purpose of the Endangered Species Act which is to preserve the species.

(Continued on Page 16)



Tired of Costly Repair Calls? Now There's An Easier Way!

PEACE OF MIND - Residential Service Plan
\$199 PER YEAR SILVER REPAIR PLAN - NEVER PAY A REPAIR MAN AGAIN!

This Plan Covers...

- **Air Conditioning System** (Up to 3 tons - With Options For Larger)
- **Standard Wall Thermostat**
- **Heating System** (Gas or Electric)
- **Refrigerator**
- **Oven & Range**
- **Dishwasher**
- **Garbage Disposal**
- **Water Heater** (Up to 40 Gallon)
- **Freon / Recovery**
- **Compressor Replacement**

Call 512.805.2255

Toll Free 877.237.7535

www.BFStexas.com

Lic# TA CLB020853E
M18048



The Silver Residential Repair Plan Includes: All Functional Parts & Labor • Unlimited Service Calls & No Deductible or Service Fees. Additional Options Available. Call For Details.

HOME ON THE RANCH

Home On The Ranch Stork Report

Congratulations!
Let us help celebrate...
email info on the arrival
of your little one to
arnewsletter@hotmail.com.

Why Does It Take So Long - (Continued from Page 15)

These delays in building roads are having a detrimental effect on our county. They cost the taxpayers as much as 20 to 30% more than it costs to build a local road. Plus, the delays add to the traffic congestion in areas where our phenomenal population growth have already made the roadways more and more unsafe due to many more vehicles being on roads built for less usage.

Williamson County officials and staff have met with a variety of state and federal officials to try to streamline this process. In December, I was told by top TxDOT officials that they are working to streamline the process. The state senate is studying this problem during the time the legislature is not in session. US Congressman John Carter and State Senator Steve Ogden are also engaged in trying to improve the situation. Additionally, the other members of the

commissioners court and I will continue to work to expedite the process, while building roads that meet or exceed all environmental regulations.

Now, on to a completely different subject, you are cordially invited to attend the 2nd Annual Dinosaur Day on Saturday, May 1st from 10 a.m.-2 p.m. at Champion Park. To get to the park, by foot, you can take the pedestrian bridge across the creek. By car, take Parmer Lane north and then take a right on Brushy Creek Road. It is a mile or so down on the right. We will have free activities for all ages all with the theme of dinosaurs to go along with the stone casts of dinosaur bones located there in the park. For more information, go to our website www.wilco.org or contact me at 733-5380 or lbirkman@wilco.org.

CAPITOL FENCE

Residential & Commercial Wood Privacy Fencing

990-2530

13724 Avenue K

www.capitolfenceaustin.com

Serving the Austin Area Since 1992

- Top Quality Red Cedar & Optional Galvanized Steel Posts for Lasting Durability & Beauty
- Offer Variety of Designs or Build to your Specifications
- Custom Designed Automatic Gate & Entry Systems
- All Styles of Ornamental Iron



NEW YEAR SPECIAL

One FREE Walk Gate
with one hundred lineal feet*

**Minimum order with this offer. Must present ad.*



AUSTIN NEWCOMERS CLUB

March Luncheon

Austin Newcomers is a social organization dedicated to introducing residents to the Austin Community and giving them the opportunity to meet and make new friends. Join us at our monthly luncheon as well as take the opportunity to learn about and become involved in many varied fun Interest groups.

Time: 11:00 AM Social - 12 Noon Luncheon

Date: March 17, 2010 (Reservations required by Thursday, March 11th)

Location: Green Pastures Restaurant
811 W. Live Oak Street, Austin, 78704

Luncheon Cost: \$20 per person

For Luncheon Reservations email:

LuncheonDirector@AustinNewcomers.com or contact Marilyn Amey, 473-0118

For more Newcomers information visit

www.austinnewcomers.com or call 512-314-5100

March Program: Get to know Austin Monthly and how it informs and entertains it's readers in the capitol area

Speaking to us this month will be Melissa Delaney, editor-in-chief of Austin Monthly and assistant editor Austin W.G. Morton.

Austin Monthly is a glossy full color, urban lifestyle magazine which depicts Austin's culture with stories, event listings, fashion, shopping, dining, the arts, restaurant reviews and reflective personal essays. The magazine continues to grow at a rapid pace since it's initial publication in 1992.

Melissa Delaney, is an award winning journalist who worked as a reporter and editor at Boston area newspapers, then joined the staff of Computerworld during the height of the tech boom. After years of freelancing at several national magazines, Delaney joined Austin Monthly where she steers the staff through the planning, creation and production of the magazine.

Austin Morton is a 2008 Virginia Tech graduate. She currently edits the Events, Scene and Style sections. Austin says although she has been here 2 years, she still learns something new just about everyday while reporting on all the City of Austin has to offer.

Carefree Living in The Overlook

Beautiful 3 bedroom/2 bath/2 car garage end unit, master suite down & spacious loft up



I Guarantee the number of days it takes to get your home SOLD, or I'll Sell it for FREE

My innovative marketing techniques sell my listings faster & for more \$\$



Janet Snow

www.AveryRanchHomes.com

(512) 636-4287

homes@janetsnow.com



As your realtor, I pledge:

- * Sufficient market knowledge
- * Maximum exposure
- * Prepping & staging advice
- * To keep you informed

A Legacy of Excellence in Montessori Education...



SAPIENTIA MONTESSORI
WISDOM



Cedar Park Montessori

Open Year Round

Mon. - Fri. • 7:00 a.m. - 6:00 p.m.

**Enrolling children ages
18 months - 12 years
for 2009 (very limited space)-2011**

- Unmatched academic & character foundation
- Individual & group lessons for children to learn at their own pace and strengthen social skills
- Well over 100 years of family and staff experience
- Specialized environments which build sensory-motor skills, social skills, high self-esteem, and instill habits of concentration & inner security, through carefully planned activities
- Wide variety of after-school and unique enrichment programs



Sapientia Montessori
512.260.2261

1220 Cottonwood Creek Trail (CR185),
Cedar Park, TX 78613
www.sapientiamontessori.com

Cedar Park Montessori
512.259.8495

400 E. Whitestone Blvd (FM 1431),
Cedar Park, TX, 78613
www.cedarparkmontessori.com

HOME ON THE RANCH

EVERY RANCH 2010 GARDEN TOUR

Coming June 5th

As we look forward to spring, it is time to dream about improving our gardens and landscaping and one of the best ways to get fresh ideas is to visit other gardens in Avery Ranch, talk to the garden hosts, share experiences, get imaginative ideas, and as a pleasant fringe benefit – get to know your neighbors better.

Our annual Garden Tour in Avery Ranch, a sponsored activity of your Social Committee, will be Saturday, June 5th beginning at 10 AM. This will be the Tour's fourth year. The Tour is free and open to all Avery Ranch residents and guests. This year the theme will be

xeriphytic and environmentally friendly gardening, but there will be gardens of all sorts on the tour. If you and other residents volunteer to place your yard on the Tour. We can take up to twelve gardens maximum. The Garden Tour is not a competition and all it takes to be on it is your willingness. We hope to get gardens from as many different neighborhoods as possible on the Tour.

All that is required is to open your yard and garden to your neighbors for the day, be present to talk to them about it and your gardening experiences in Avery Ranch, and be prepared to have a lot of fun doing it! It's a toss-up as to who enjoys the Tour most, the visitors or the hosts. We also could use a few volunteers to help with the operation of the Tour, so if your yard isn't part of it, you can still be.



Take a look at the Avery Ranch Garden Tour web page at www.centraltexasgardening.info/artour.htm and see yards that have been on past Tours, get info about how to be on this year's Tour, and learn more about this event. You'll want to mark it on your calendar and be sure not miss it. Please call Bob Beyer, Tour Coordinator at 238-6732 for more information or to place your yard on the Tour. You can also email to txbeyer@austin.rr.com. As people volunteer to place their yard on the 2010 Tour, we will add a picture and brief description of their garden on the AR Tour web

page as a preview.

The Tour includes informational booths by Master Gardeners and other organizations promoting environmentally friendly gardening who can offer advice and answer questions. We will have drawings for door prizes (nice donated plants and garden items), and a great opportunity to meet other residents interested in gardening in Avery Ranch.

Don't hesitate to get involved! Even though old man winter has done it's worse to our gardens this winter, they should be looking great by June 5th. Remember, there are two opportunities to help; volunteer your garden to be on the Tour, and volunteer to help with the Tour. Thanks to everyone in Avery Ranch for supporting this annual event.

By Bob Beyer, Avery Ranch Garden Tour Coordinator, Morningside

Do You Have Reason to Celebrate?

We want to hear from you! Email arnewsletter@hotmail.com to let the community know!



Home Electronics Sales & Installation
Pre-wired homes are our specialty!
Special Discounted rate - only \$45 per hour*


Plasma/LCD Installation - In-wall/ceiling/outdoor speakers
TV/Audio Equipment Set-up - Home Theater Installation
Speakers - Receivers - Projection Systems
Competitive Prices - Fully Insured

431-2996

FunHouseMedia.com

FREE In-Home Consultation

*1 Hour Minimum - expires 4-30-10



Our physicians and staff are focused on providing the communities of Williamson and northern Travis counties access to the latest advances in respiratory and sleep medicine. We invite you to stop by and take a tour or call for an appointment anytime during business hours.

Williamson Pulmonary & Sleep Associates
CLINIC & SLEEP CENTER

Oakmont Business Park
1464 E. Whitestone Blvd., Suite 601
Cedar Park, TX 78613 • (512) 986-7765
www.wpsaclinic.com

Dr. Said Soubra, M.D.
Dr. Harsh Babbar, M.D.
Dr. Shantanu Naik, M.D.

Avery Garden Rancheros

By Patty Hoenigman



Avery Ranch has a garden group, called the Avery Garden Rancheros. We typically have a speaker, go on a field trip, or sometimes we have a potluck with wonderful food and talk about the plants that didn't survive the recent hard frosts, then have a plant swap. It's lots of fun getting to know neighbors and learning about gardening in Austin in a very casual setting. No dues for this group! We meet in each other's homes once a month, typically on weekdays. If you'd like to know about upcoming meetings, please send an email to Patty Hoenigman at patty@thetaxcenter.us

Recipe of the Month

Broccoli Casserole

Ingredients

- 1 package frozen broccoli
- 1 cup cooked rice
- ½ cup chopped celery
- ½ cup chopped onion
- 1 small jar Cheese Whiz
- 1 can cream of chicken soup
- 1 can cream of mushroom soup

Directions

Place rice in greased casserole dish.
Sauté onions and celery. Cook broccoli until crispy tender. Combine vegetables, soups, and cheese. Pour over rice. Bake at 375° until bubbly.

If you would like to submit YOUR recipe, email it to articles@peelinc.com.

NEW LOW PRICES *in 2010!*

BUSINESS CARDS *Starting @ \$46.00*

ENVELOPES *Starting @ \$108.00*

LETTERHEADS *Starting @ \$91.00*

RUBBER STAMPS *Starting @ \$7.50*

▪ *And Much More!*

ASK ABOUT OUR PROMOTIONAL ITEMS!

1-888-687-6444 ext. 24

Quality
PRINTING COMPANY

Experience Matters
Doing business for
30+ years.



HOME ON THE RANCH

A TOAST TO THE CHILDREN OF CENTRAL TEXAS

*Round Rock Circle of Friends Invite You
to 11th Annual Wine Tasting Event*

Round Rock Circle of Friends invites the community to help ensure good health for the children of Central Texas at the 11th Annual Toast to the Rock event, benefiting Dell Children's Medical Center of Central Texas. The event will be held on April 18 from 3pm-6pm at the Fern Bluff Community Center, 7320 Wyoming Springs Drive, in Round Rock.

Dell Children's is a tremendous asset to our community. The state-of-the-art facility provides exceptional care, close to home, to thousands of children and their families. (We support a 46 county area throughout Central Texas) It continues the legacy of outstanding service of Children's Hospital of Austin (closed on July 1, 2007) with new space, new technology, new programs – and more hearts and hands to make it all happen.

Together, we are creating a new standard in pediatric care. We are growing a world-class medical center dedicated to the care of children and adolescents, regardless of their families' ability to pay. We offer help, hope, and healing to our children for generations to come.

Toast to the Rock is a fabulous afternoon of wine-tasting, food sampling, silent auction and musical entertainment. Tickets are \$50 per person and \$90 per couple and can be purchased online at www.ToastToTheRock.com. For more information please visit our website or contact Martha Grandin, grandinmk@aol.com, or Holly Coe, gcoe@austin.rr.com event co-chairs.



PEEL, Inc. COMMUNITY NEWSLETTERS

Avery Ranch
Barton Creek
Barton Hills
Bella Vista
Belterra
Canyon Creek
Cherry Creek on Brodie Lane
Circle C Ranch
Courtyard
Davenport Ranch
Forest Creek
Granada Hills
Hidden Glen
Highland Park West Balcones
Highpointe
Jester Estates
Lakeline Ranch
Lake Pointe
Lakeway
Lakewood
Laurel Oaks NA

Legend Oaks II
Long Canyon
Lost Creek
Mayfield Ranch
Meadows of Brushy Creek
Pemberton Heights
Ranch at Brushy Creek
River Place
Sendera
Shady Hollow
Sonoma
Steiner Ranch
Stone Canyon
Travis Country West
Twin Creeks
Villages of Westen Oaks
Vista Oaks
Westcreek
Westminster Glen
Wood Glen



512-263-9181
advertising@PEELinc.com
www.PEELinc.com

Publishing Community Newsletters Since 1991

**NOT AVAILABLE
ONLINE**

GREAT HILLS BAPTIST CHURCH

www.ghbc.org

Don't Forget:

Daylight Saving Time
Begins March 14
Spring forward one hour.

Coming in April:

Good Friday Service
April 2 - 6:30 pm
Easter Services *(no Bible Life)*
April 4 - 9:30 & 11:00 am
Relationships Sermon Series

**Advertise
Your Business Here
888-687-6444**

Sunday Morning Schedule

9:30 . Traditional Worship | 11:00 . Contemporary Worship
9:30 & 11:00 . Bible Life Groups (all ages)

Great Hills Baptist Church

www.ghbc.org

10500 Jollyville Road . Austin, Texas 78759 | 512.343.7763

HOME ON THE RANCH

REFLECTIONS:

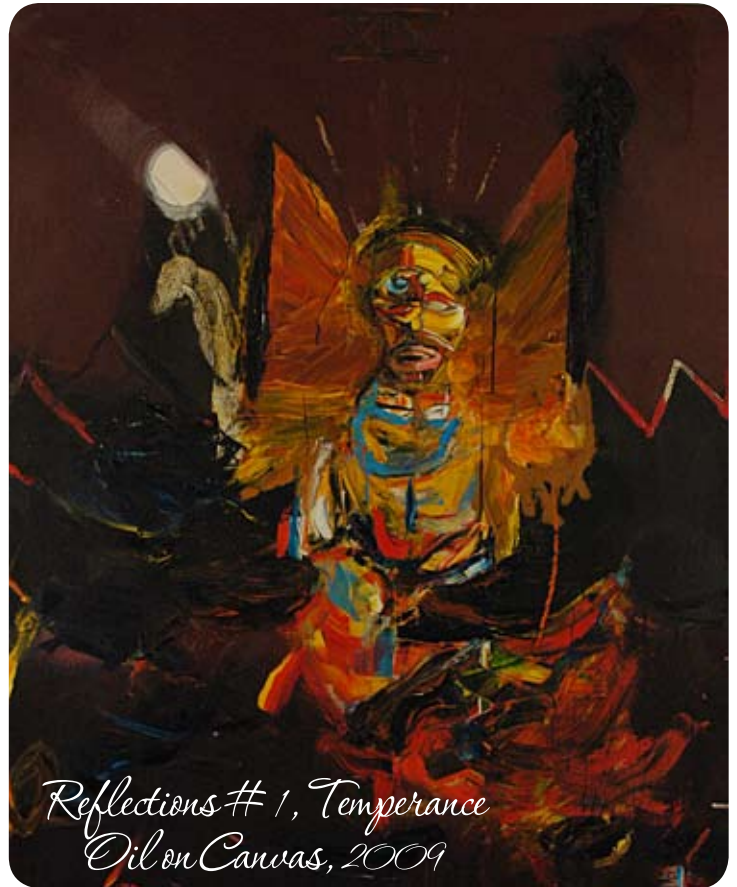
New Work from Sergio Rodriguez

The Mexican American Cultural Center (MACC) will be hosting Reflections, an exhibit of large scale oil paintings by Sergio Rodriguez. There will be an opening reception Saturday, January 30th at 6pm in the main gallery, and the exhibit will be open to the public from January 30th to March 27th. There will also be a gallery talk about Rodriguez's work given by the artist February 6th at 2pm. Reflections is a personal exploration of Rodriguez's experience growing up in the border town of Eagle Pass. Not having visited his place of birth in 22 years, Rodriguez made a special trip back to Eagle Pass, re-immersing himself in the U.S.-Mexico border culture in order to inspire the work for this particular show. Further explaining the concept for Reflections, Rodriguez says, "such were the dreams that being reared along the border fostered; such were the conditions, history, and influences that permeated me, molded me, filled me, and thus sprung veins through which I think, feel and see ... I yield what I am, and my roots never abandon me." Through unique and striking pieces, Rodriguez visually elaborates on the elements of a complicated identity and allows the viewer to engage in his intimate experience. For more information call Herlinda Zamora at 478-6222.

ABOUT THE ARTIST:

Sergio Rodriguez has exhibited work in Philadelphia, Mexico D.F. and all over Texas. His work is part of public and corporate collections in New York, Mexico and Puerto Rico, as well as Texas. After not being personally fulfilled with pursuit of a degree in business at Southwest Texas State University in San Marcos, Rodriguez stumbled upon the art of drawing, where he found his niche. He went on to receive his BFA in painting from Southwest Texas State University and then his MFA in painting from the Tyler School of Art in Philadelphia. He lives and works out of Austin, Texas.

The City of Austin is committed to compliance with the Americans with Disabilities Act. If you require special assistance for participation in our programs or use of our facilities please call 512.478.6222.



*Reflections #1, Temperance
Oil on Canvas, 2009*

La Ciudad de Austin está comprometida al Acta de Americanos Incapacitados. Si requiere asistencia para participar en nuestros programas por favor llame al teléfono número 512.478.6222

For more information on the MACC, visit www.maccaustin.com or contact Herlinda Zamora, at 512.478.6222. The MACC is located on 600 River Street, Austin, Texas 78701.

AQUA-TOTS

SWIM SCHOOLS

Lessons For Life

Private and group classes starting weekly!

- **Small Classes**
- **Convenient Locations**
- **Indoor and Outdoor Pools**

REGISTER TODAY!

Aqua-Tots Swim Schools
(512) 336-8687
www.aqua-tots.com

At no time will any source be allowed to use the Home on The Ranch Newsletter contents, or loan said contents, to others in anyway, shape or form, nor in any media, website, print, film, e-mail, electrostatic copy, fax, or etc. for the purpose of solicitation, commercial use, or any use for profit, political campaigns, or other self amplification, under penalty of law without written or expressed permission from Peel, Inc. The information in the newsletter is exclusively for the private use of Peel, Inc. and the Avery Ranch Homeowners Association.

DISCLAIMER: Articles and ads in this newsletter express the opinions of their authors and do not necessarily reflect the opinions of Peel, Inc. or its employees. Peel, Inc. is not responsible for the accuracy of any facts stated in articles submitted by others. The publisher also assumes no responsibility for the advertising content with this publication. All warranties and representations made in the advertising content are solely that of the advertiser and any such claims regarding its content should be taken up with the advertiser.

*The publisher assumes no liability with regard to its advertisers for misprints or failure to place advertising in this publication except for the actual cost of such advertising.

* Although every effort is taken to avoid mistakes and/or misprints, the publisher assumes no responsibility for any errors of information or typographical mistakes, except as limited to the cost of advertising as stated above or in the case of misinformation, a printed retraction/correction.

* Under no circumstances shall the publisher be held liable for incidental or consequential damages, inconvenience, loss of business or services, or any other liabilities from failure to publish, or from failure to publish in a timely manner, except as limited to liabilities stated above.

Sudoku

The challenge is to fill every row across, every column down, and every 3x3 box with the digits 1 through 9. Each 1 through 9 digit must appear only once in each row across, each column down, and each 3x3 box.

				2	7	5	8	
2			8		5		1	9
			1					
				8				
7						6		4
5	4		9		3			
	6				9	3		
		9					2	
	7							

*Solution at www.PEELinc.com

© 2007. Feature Exchange

Advertise **YOUR** business
to **YOUR** neighbors for
less than 4¢ per home.

Effective Advertising, Done Right.

Call today to Reserve your space.

Peel, Inc.
COMMUNITY NEWSLETTERS

512-263-9181

www.PEELinc.com

AR

Peel, Inc.

311 Ranch Road 620 S. Ste 200
Lakeway, TX 78734-4775
www.PEELinc.com

PRSR STD
U.S. POSTAGE
PAID
PEEL, INC.

AR



EasyCare

 The Austin Diagnostic Clinic

*When you're feeling bad, you want help.
And you want it fast. That's why The Austin
Diagnostic Clinic created EasyCare.*



EasyCare
ADC Family Practice & Pediatric Center
2400 Cedar Bend Dr., 1st floor
512/901-4031
www.adclinic.com

Easy Appointments

*Walk-in and Same-Day Appointments for adults,
adolescents and children over 8 years of age*

Easy Access

Monday through Friday from 8 am to 8 pm
Saturday and Sunday from 9 am to 5 pm**

Easy Location & Parking

*Convenient north Austin office with on-site x-ray & lab***

Easy on Your Wallet

*Medicare and most insurance accepted
No hospital deductible*

Ease of Mind

*ADC physicians and providers to care for you
and your family.*

Open to ADC patients and the community.

* After 5:00 pm and on Saturday and Sunday additional charges may apply
** X-ray available at all times; Lab available Mon-Fri 8 am to 5 pm