

# THE Current

## SHADOW CREEK RANCH

April 2010

Official Publication of the Shadow Creek Ranch HOA

Volume 2, Issue 4

### Shadow Creek Swim Team



Ages 6-12. Join the Swim Team's second season for high level coaching, many practice sessions, end of season prizes, and lots of fun. First practice: Saturday, June 19. Last day & swim competition: Saturday, July 24. Total of 15 practice sessions plus final competition. Make any or all practices. Each Swimmer will become an AAU member that includes AAU insurance. As the team grows, competitions will be planned with neighborhoods and swim clubs close to Shadow Creek.

To be eligible for the team, a swimmer must be able to swim one length of the pool (25 yards) with head in the water (breathing allowed of course!) -- no exceptions. The team is to improve able swimmers. There will be no tryout for the team, so if you are unsure your child can swim 25 yards, best to practice now to find out.

Details and registration at [www.shadowcreeksoccer.org/swim](http://www.shadowcreeksoccer.org/swim)

### Councilman's Corner

I recently had the opportunity to attend the Annual Meeting of the Village of Emerald Bay. During the meeting I was asked to address concerns regarding the apartment complexes in and around Shadow Creek Ranch. The concerns centered on the location and number of multifamily units and the perception that the number of locations and units has increased from the original plat for Shadow Creek Ranch filed with the City in 1999. Set out below is the information I obtained from several City departments regarding this issue.

Shadow Creek Ranch was developed as an overlay planned development zoning district ("PD"). The purpose of a PD is to provide for the development of land as an integral unit for single or mixed use in accordance with a PD Design Plan that may include uses, regulations and other requirements that vary from the provisions of other zoning districts. PD Districts are intended to implement generally the goals and objectives of the City's Comprehensive Plan. PD Districts are also intended to encourage flexible and creative planning, to ensure the compatibility of land uses, to allow for the adjustment of changing demands to meet the current needs of the community, and to result in a higher quality development for the community than would result from the use of conventional zoning districts.

The original PD for SCR was filed in 1999. The PD called for 9 multifamily sites covering 192.8 acres. Over the years the PD was amended, but amendments related to multifamily sites resulted in a reduction of both the number of sites and the total acres. The PD for SCR was last amended on February 25, 2009. The 2009 PD includes 6 multifamily sites covering 154.6 acres. The multi family units on the current PD are: Villas at Shadow Creek Ranch (264 units), Waterford Place (296 units), Discovery at Shadow Creek Ranch (347 units), Alexan (392 units), 12400 Shadow Creek Parkway (362 units), and a yet undeveloped plat at the corner of Kinglsey and Broadway.

The current PD caps the total dwelling units in SCR to 12,723. Under the PD each land use category acreage may be increased by 15%. That said, the acreage of multifamily uses has reduced from 192.8 acres to 154.6 acres.

The reduction in multifamily use acreage occurred in part to the unexpected explosion in home sales that occurred during the initial years of the development. The skyrocketing home sales led the developer to focus attention on that market and they then opted to build less multifamily than had initially been planned.

According to City Staff, the developer of SCR is allowed to modify the PD

*(Continued on Page 3)*

# IMPORTANT NUMBERS

## EMERGENCY NUMBERS

EMERGENCY .....	911
Fire.....	911
Ambulance.....	911
Sheriff – Non-Emergency.....	281-331-9000

## SCHOOLS

Mary Marek Elementary .....	281-245-3232
Laura Ingalls Wilder Elementary .....	281-245-3090
Manvel Junior High .....	281-331-1416
Alvin Senior High .....	281-331-8151
Manvel High School .....	281-245-2235
Alvin ISD Administration .....	281-338-1130
Alvin ISD Transportation .....	281-331-0960

## UTILITIES

Electricity - Reliant Energy.....	713-207-7777
Gas - Center Point .....	713-659-2111
Trash Removal - City of Pearland .....	281-652-1600

## OTHER NUMBERS

Pearland Post Office .....	281-485-2132
Poison Control.....	800-764-7661
Brazoria County Health Department .....	979-864-1484
Animal Control.....	281-756-2265

## CITY

Pearland City Hall.....	281-652-1600
Pearland Utility Billing - Water Dept. ....	281-652-1603
Pearland Animal Control.....	281-652-1970
Pearland Police Dept - Non-Emergency .....	281-652-1100
Pearland Public Works.....	281-652-1900

## NEWSLETTER

Articles .....	shadowcreekbranch@peelinc.com
Publisher	
Peel, Inc. ....	1-888-687-6444
Advertising.....	1-888-687-6444

# MGMT COMPANY

## ASSOCIATION MANAGEMENT, INC.

Community Manager	
Maria Southall-Shaw.....	713-332-4675
On-Site Manager for Reflection Bay & Biscayne Bay	
Kerry Holmes .....	713-436-4563
On-Site Manager for Emerald Bay & Diamond Bay	
Kimberly Cartwright.....	713-436-4563
Service Specialist	
Carmen Sierra.....	713-332-4685

[www.AMITX.com](http://www.AMITX.com)

# Table of Contents

## AROUND SHADOW CREEK RANCH

Interchange Now Open.....	3
Community Section News .....	4
The Island .....	4
Meadow Trails .....	4
Village Green.....	4
From AMI.....	5
What Can You Do About Soliciting .....	5
Deed Violation Notice.....	5
Shadow Creek Ranch Pool Schedule.....	6

## PEARLAND NEWS

Don't Mess With Texas Trash Off.....	8
Brazoria County Municipal Utility District No.26 .....	8
Let Freedom Sing.....	8

## NEWSYOU CAN USE

Teenage Job Seekers.....	8
Eight Water Safety Rules for a Safe Pearland Summer.....	10
Sudoku.....	10

## Shadow Creek Ranch Stork Report

Congratulations!  
Let us help celebrate...  
email info on the arrival  
of your little one to  
[shadowcreekbranch@peelinc.com](mailto:shadowcreekbranch@peelinc.com).



FARMERS

AUTO - HOME - WIND - FLOOD - LIFE

**NEW** Rates & Discounts! Ask for a quote today, and see how much you can save.

Helping you protect what matters most.

Viet Nguyen - Your Local Shadow Creek Ranch Agent

9330 Broadway St - Ste 326 / Pearland TX 77584



(281) 741 - 7331 / [vnnguyen4@farmersagent.com](mailto:vnnguyen4@farmersagent.com)

# AROUND SHADOW CREEK RANCH

## Councilman's Corner - (Continued from Cover Page)

administratively as long as they do not exceed the total number of residential units (12,723) and do not increase the size (area) of a particular land use by more than 15%. A change within these guidelines does not require any action by the City Council of Planning and Zoning Commission. When changes are made within these guidelines, the City staff requests that the developer provide an updated plan reflecting any variation from the original PD document. The plan is then verified by City staff and placed in the Planning files for future reference.

Staff has indicated to me that even though an increase of less than 15% of the multi family use would not trigger approval by the City Council or Planning and Zoning Commission, the staff policy would be to notify the bodies so that they are aware that the change.

I hope that this information is helpful. As always, please let me know if there are issues or concerns that I can assist you in addressing or resolving.

Scott Sherman  
Councilmember, Position #2  
sherman.scottj@gmail.com  
Facebook: "Councilmember Scott Sherman"

## INTERCHANGE

### *Now Open*

The interchange at 518 (Broadway) and 521 (Alameda) is now open. If you are needing to get on the beltway to go west, this might save some time rather than driving up through the neighborhood then to Alameda.

This interchange will also bring in more traffic through 518 - people getting to the mall and such, so be extra careful when pulling out onto 518 from Windward Bay.

For more information visit <http://www.ultimatepearland.com/2010/02/broadwayfm-521-intersection-open>.

## Classified Ads

**Personal classifieds** (one time sell items, such as a used bike...) run at no charge to Shadow Creek Ranch residents, limit 30 words, please e-mail [shadowcreekranch@peelinc.com](mailto:shadowcreekranch@peelinc.com).

**Business classifieds** (offering a service or product line for profit) are \$50, limit 40 words, please contact Peel, Inc. Sales Office at 1-888-687-6444 or [advertising@peelinc.com](mailto:advertising@peelinc.com).

## *When You're Ready to Sell* *Call The Experts at the Front Door of YOUR Community!*



**Cathy Spacek**

**832-643-7768**

[cathy@cathyspacek.com](mailto:cathy@cathyspacek.com)

Top Producer &  
Resale Specialist

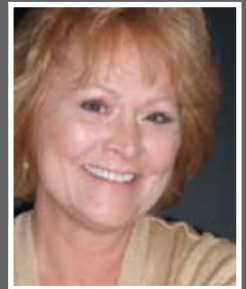
★ ★ Platinum  
2005 2006 Producer

**The Original Shadow Creek Ranch Realtors**  
*Specializing in Your Community*

**Maximum Exposure of Your Listing**  
*Located in the SCR Visitors Center, and Welcoming  
More Walkin Buyers Than Any Other  
Real Estate Company*

**Even More Exposure with Our Exclusive  
Live Online Chat**

*Reaching Out to Buyers Worldwide...  
24 Hours a Day, 7 Days a Week*



**Ricki Stockwell**

**713-306-3773**

[redrock811@aol.com](mailto:redrock811@aol.com)

SCR Top Producer

Platinum ★ ★ ★  
Producer 2004 2005 2006  
★ ★ ★  
2007 2008 2009



# AROUND SHADOW CREEK RANCH

## COMMUNITY SECTION NEWS

### THE ISLAND

*Hello Island Families,*

Thank goodness the winter weather is almost gone. It feels like we have all been hibernating for the last three months. For those still interested, I have "NO SOLICITING SIGNS" to the first emails complete with your address. Crystal Lakes donated these to us. They are requesting that you make a \$15.00 donation to the charity of your choice. If you have not signed up with our Ladies of the Island group, please forward the information to me and I will get it to the right place. We have several family events per year, and would like your family to join us. Watch for more in the coming months.

During our last Neighborhood "Night Out" event, several of you expressed an interest in security and surveillance information. My husband, Richard, volunteered to gather information, and will be meeting with a contractor(s) soon concerning viability, cost, etc. Look for more news via email!!!

*Enjoy the sunshine! Sherry Stockwell - Sherry.stockwell@sbcglobal.net*

### MEADOW TRAILS

*Hello Meadow Trails East and West Residents,*

Thank all of you who came out to the section meeting in February! For any residents that were unable to come out don't worry I will provide more opportunities to meet and greet your neighbors. I want everybody to get ready for Yard Of The Month beginning April 1! I know having some pretty green grass and beautiful flowers will brighten up everyone's day. Also I have noticed throughout the community in general there are a lot of dogs. What are your comments about Shadow Creek Ranch getting their own dog park? Contact me at 281-798-3005 or mscb45107@yahoo.com, and let me know what you think.

*Section Representative, Chalmette Ray*

### VILLAGE GREEN

*Dear Village Green-ers:*

Happy Spring! There continues to be great construction activity in our neighborhood. If you are not receiving emails from me about neighborhood updates, please send me your contact information at thedaggetts2008@gmail.com. As always, be sure to meet your neighbors and have a great month!

*Sincerely, Katie Daggett*

## Emergency Room Open 24 Hours

### READY OR NOT ... WE ARE.™

Texas Emergency Care Center is open **24 hours a day**. We're committed to delivering comprehensive medical services in a comfortable environment with little to no wait time – day or night.

You'll experience:

- A full-service facility equipped with a complete laboratory, radiology, CT scanning and cardiac monitoring.
- Prompt, friendly and caring service.
- Quality face time with a physician who is Board Certified in Emergency Medicine.

**After all, emergencies just can't wait.**

## 281-648-9113

All private insurance accepted.

FM 518 at Dixie Farm Road  
3115 Dixie Farm Road, Suite 107

**www.txercare.com**

Accredited by the Joint Commission of Accreditation of Healthcare Organizations for our commitment to excellence.



# AROUND SHADOW CREEK RANCH

## FROM AMI

### What Can You Do About Soliciting

#### *In The Neighborhood?*

Many communities are ripe targets for solicitors – for a variety of reasons. While the Association has no real control over soliciting activities, we have tried to discourage solicitors from marketing in our community by placing “no soliciting” signs in common areas.

The reason that we cannot prevent soliciting is that the streets and roadways within the community are public access ways owned and maintained by the county. This means that no person or persons may be prevented from entering the community. Of course, if an individual or individuals are in the process of breaking the law, the Sheriff or other law enforcement officer can take immediate action.

You Association recommends the following actions that every owner can take to discourage unwelcome soliciting in the community:

- Report all suspicious persons to the Sheriff's Department and request the deputies on duty be made aware of your concerns.
- Promptly remove all flyers left on your front or garage door.
- Promptly report to the Post Office all flyers left on the mailboxes.

- Refuse to make use of solicitors' offers and refuse to patronize any company being marketed in this manner.
- Notify the managing agent of any companies presently soliciting so that letters can be sent advising them of this policy of not permitting door to door soliciting (they will be reminded of the community newsletter and/or the Green Sheet as marketing options).
- Individual homeowners have the ability to place a small “No Trespassing/No Soliciting” sign at the entry to their homes. Should a solicitor continue to leave flyers, the homeowner then has the authority to file charges against the Solicitor/Company for trespassing on private property.

**NOTICE: All deed violation work performed by Association will have a minimal base charge of \$100.00. This includes force mowing a homeowner's lawn.**

### Get on the Best Sellers List!

with 

*Patty McCracken*

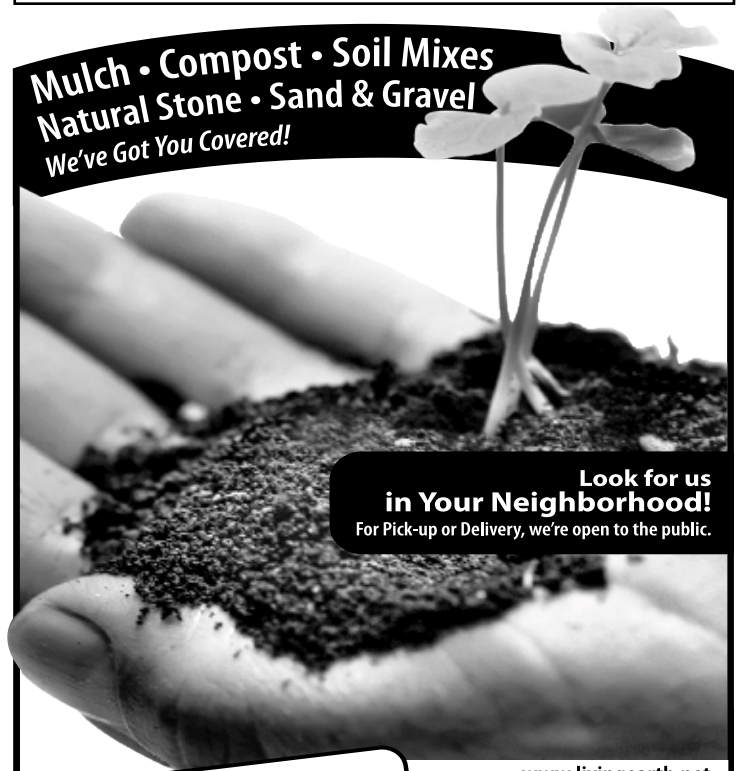


**281-686-9301**



Email: [pattymccrackensells@gmail.com](mailto:pattymccrackensells@gmail.com)

**Mulch • Compost • Soil Mixes  
Natural Stone • Sand & Gravel**  
*We've Got You Covered!*



**Look for us  
in Your Neighborhood!**  
For Pick-up or Delivery, we're open to the public.

[www.livingearth.net](http://www.livingearth.net)

**LIVING  
EARTH**

16138 Highway 6  
**(281) 431-3400**  
Iowa Colony, TX  
1.3 miles west of 288 on Hwy 6



# AROUND SHADOW CREEK RANCH

## Shadow Creek Ranch

### *Pool Schedule 2010*

<p><b>EMERALD BAY LAP POOL:</b>  <i>11814 N Clear Lake Loop</i>                      Closed Mon's and Thurs' for Maintenance</p> <p><b>May 29 – 31, 2010</b>  <b>(Memorial Holiday Weekend)</b>                      Saturday: 12pm – 8pm                      Sunday: 12pm- 8pm                      Monday: 12pm – 8pm</p> <p><b>June 7 – August 22, 2010 (Full Season)</b>                      Monday: Closed for Maintenance                      Tuesday: 12pm – 8pm                      Wednesday: 12pm – 8pm                      Thursday: Closed for Maintenance                      Friday: 12pm – 8pm                      Saturday: 12pm – 8pm                      Sunday: 12pm – 8pm  <b>Adult Lap Swim: Tues., Wed., Fri., 8-9pm</b>                      18 and older</p> <p><b>August 28 – Sept. 5, 2010</b>  <b>(Weekends only)</b>                      Saturday: 12pm – 8pm                      Sunday: 12pm – 8pm</p> <p><b>September 6, 2010 –</b>  <b>(Labor Day - Last Day)</b>                      Monday: 12pm – 8pm</p>	<p><b>REFLECTION BAY DIVING POOL:</b>  <i>12115 S Clear Lake Loop</i>                      Closed Tuesdays for Maintenance</p> <p><b>May 29 – 31, 2010</b>  <b>(Memorial Holiday Weekend)</b>                      Saturday: 12pm – 8pm                      Sunday: 12pm- 8pm                      Monday: 12pm- 8pm</p> <p><b>June 7 – August 22, 2010 (Full Season)</b>                      Monday: 12pm – 8pm                      Tuesday: Closed for Maintenance                      Wednesday: 12pm – 8pm                      Thursday: 12pm – 8pm                      Friday: 12pm – 8pm                      Saturday: 12pm – 8pm                      Sunday: 12pm – 8pm</p> <p><b>August 28 – Sept. 5, 2010</b>  <b>(Weekends only)</b>                      Saturday: 12pm – 8pm                      Sunday: 12pm – 8pm</p> <p><b>September 6, 2010 –</b>  <b>(Labor Day - Last Day)</b>                      Monday: 12pm – 8pm</p>	<p><b>DIAMOND BAY WATER PARK:</b>  <i>2034 Trinity Bay Drive</i>                      Closed Wednesdays for Maintenance</p> <p><b>May 29 – 31, 2010</b>  <b>(Memorial Holiday Weekend)</b>                      Saturday: 10am – 8pm                      Sunday: 12pm- 8pm                      Monday: 10am- 8pm</p> <p><b>June 7 – August 22, 2010 (Full Season)</b>                      Monday: 10am – 8pm                      Tuesday: 10am – 8pm                      Wednesday: Closed for Maintenance                      Thursday: 10am – 8pm                      Friday: 10am – 8pm                      Saturday: 10am – 8pm                      Sunday: 12pm – 8pm</p> <p><b>August 28 – Sept. 5, 2010</b>  <b>(Weekends only)</b>                      Saturday: 10am – 8pm                      Sunday: 12pm – 8pm</p> <p><b>September 6, 2010 –</b>  <b>(Labor Day - Last Day)</b>                      Monday: 10am – 8pm</p>
---	---	--

*Homeowners must be current on their assessments and have an active Shadow Creek Ranch Access card to gain entry.  
 For more information or to purchase an access card, please contact the Shadow Creek Ranch Office at 713.436.4563 or  
 visit 12234 Shadow Creek Parkway, Bldg 3, Suite 112, Pearland, Texas 8am – 5pm, Monday- Friday.*

*Proms • Weddings  
 Birthdays • Concerts  
 Rodeos • Special Occasions*

**We have the BEST PRICES in town!**



Blackhorse Limousine Services  
 Houston, Texas • 713-987-7737  
[www.blackhorselimo.com](http://www.blackhorselimo.com)





# Introducing Kelsey-Seybold Clinic – Shadow Creek Ranch



*Now  
Open!*

**Now, two great locations  
in Pearland to serve you and  
your family.**



***Shadow Creek  
Ranch***

10970 Shadow Creek Parkway  
Suite 170 and 195  
Pearland, Texas 77584  
713-442-7200

Our new Kelsey-Seybold Clinic – Shadow Creek Ranch joins our Silverlake Clinic at 9430 Broadway Street. Kelsey-Seybold Clinic – Shadow Creek Ranch offers multiple medical specialties combined with laboratory, X-ray and ultrasound services.

Now, under one roof and right down the block, you'll find Kelsey-Seybold specialists certified in:

- Endocrinology
- Internal Medicine
- Obstetrics and Gynecology (OB/GYN)
- Orthopedics and Sports Medicine
- Physical Medicine and Rehabilitation/Spine Center
- Pulmonary Medicine

An expanded roster of specialists in Pediatrics and Family Medicine continue to care for patients at our existing Silverlake location. With two great locations to serve you and your family, we are Your Doctors for Life in Pearland. Learn more at [www.kelsey-seybold.com/ShadowCreek](http://www.kelsey-seybold.com/ShadowCreek).

**24-Hour Appointment Scheduling: 713-442-DOCS (3627)**  
**Learn more at: [www.kelsey-seybold.com/ShadowCreek](http://www.kelsey-seybold.com/ShadowCreek)**

# PEARLAND NEWS

## Don't Mess With Texas *Trash Off*

Join Keep Pearland Beautiful, Scout Troops, school groups, church groups, civic, families, organizations, and businesses from all over Pearland for the annual Don't Mess With Texas Trash-Off on Saturday, April 10.

We will meet at the Stella Roberts Recycling Center, 5800 Magnolia, at 7:30 a.m. for breakfast tacos and assignments. Keep Pearland Beautiful will supply bags and gloves for the cleanup and will send a crew out to pick up the bags of trash. There will be caps for all volunteers and three cash prizes will be awarded. There will be a random drawing from wrap-up reports submitted on time and a prize for the group submitting the most original clean-up photo of their group. The third cash prize will go to the group collecting the most cigarette butts that day.

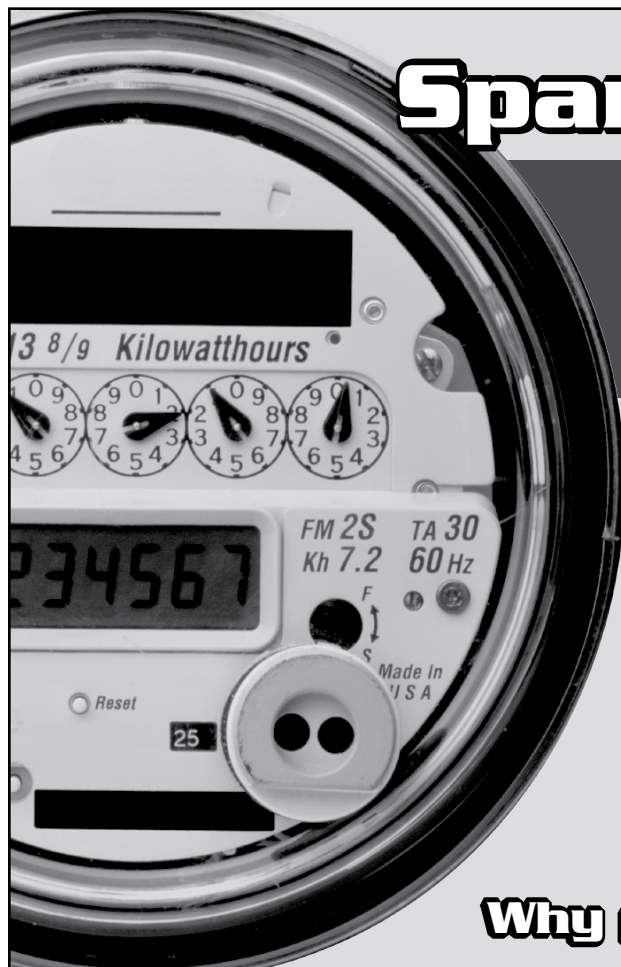
The Trash-Off is a part of a state-wide cleanup sponsored by Keep Texas Beautiful and the Texas Department of Transportation. It is also the signature event in Pearland for Keep America Beautiful's Great American Cleanup, which runs from March through May and is considered the largest grassroots cleanup and community improvement event in the world. If you want to make a difference in our community, join us for the trash-off. For more information or to sign your group up to participate call the KPB office, 281-652-1659 or visit us on the web at [www.keeppearlandbeautiful.org](http://www.keeppearlandbeautiful.org).

## Brazoria County Municipal Utility

### *District No. 26*

As a reminder, the City of Pearland operates our water and sewer system and provides garbage collection services. If you have any questions about your service, please call the City of Pearland at (281) 652-1603.

The District generally meets every first Tuesday at 11:00 a.m. at the offices of Allen Boone Humphries Robinson LLP, 3200 Southwest Freeway, Suite 2600, Houston, Texas 77027. Agendas for each meeting are posted at the Emerald Village Recreation Center, 11814 N. Clear Lake Loop, Pearland, Texas 77584, and at the Brazoria County Courthouse at least 72 hours before every meeting, and the Board of Directors invites all members of the public to attend its meetings. Please contact (713) 860-6439 if you need confirmation of a Board meeting.



## Spark Power Bank

### **Electricity Rates Are At Near Record Lows!**

*Compare our rates to ANY power provider in Texas and you'll see why SparkPowerBank.com is the low cost leader!*

**SIGN-UP ONLINE TODAY!  
[WWW.SPARKPOWERBANK.COM](http://WWW.SPARKPOWERBANK.COM)**

*Please choose "Newsletter Ad" as your referral*

**I'm Texas Energy Analyst Alan Lamme.  
Maybe you've heard me on the radio talking  
about the market forces that drive energy  
prices. I'm here to tell you that you're not  
stuck paying those high prices  
to big electric companies anymore!**

**Why pay more than you have to?**



## Let Freedom Sing

*Saturday, April 17, 2010*

Registration starts at 1pm, Auditions start at 2pm. Pearland Town Center pavilion, corner of Hwy 288 & FM 518. Parking on-site. Two winners will be selected to perform at Pearland's July 4th Celebration of Freedom! Adult & Youth age categories available, must be 8 years of age or older. For rules and more information call 281-652-1673 or log onto [www.pearlandparks.com](http://www.pearlandparks.com).

**NOT AVAILABLE  
ONLINE**

The Current is the official publication of the Shadow Creek Ranch Maintenance Association. At no time will any source be allowed to use The Current's contents, or loan said contents, to others in anyway, shape or form, nor in any media, website, print, film, e-mail, electrostatic copy, fax, or etc. for the purpose of solicitation, commercial use, or any use for profit, political campaigns, or other self amplification, under penalty of law without written or expressed permission from the Shadow Creek Ranch Maintenance Association and Peel, Inc. The information in the newsletter is exclusively for the private use of Shadow Creek Ranch and Peel, Inc.

**DISCLAIMER:** Articles and ads in this newsletter express the opinions of their authors and do not necessarily reflect the opinions of Peel, Inc. or its employees. Peel, Inc. is not responsible for the accuracy of any facts stated in articles submitted by others. The publisher also assumes no responsibility for the advertising content with this publication. All warranties and representations made in the advertising content are solely that of the advertiser and any such claims regarding its content should be taken up with the advertiser.

\* The publisher assumes no liability with regard to its advertisers for misprints or failure to place advertising in this publication except for the actual cost of such advertising.

\* Although every effort is taken to avoid mistakes and/or misprints, the publisher assumes no responsibility for any errors of information or typographical mistakes, except as limited to the cost of advertising as stated above or in the case of misinformation, a printed retraction/correction.

\* Under no circumstances shall the publisher be held liable for incidental or consequential damages, inconvenience, loss of business or services, or any other liabilities from failure to publish, or from failure to publish in a timely manner, except as limited to liabilities stated above.

## Bashans Painting & Home Repair

**Commercial/Residential  
Free Estimates**

**281-347-6702**



**281-731-3383 cell**



- Interior & Exterior Painting
- Hardi Plank Installation
- Wood Replacement
- Sheetrock Repair
- Interior Carpentry
- Cabinet Painting
- Wallpaper Removal and Texturizing
- Pressure Washing
- Fence Repair/Replacement
- Garage Floor Epoxy
- Custom Staining
- Roofing
- Gutter Repair/Replacement
- Faux Painting

**References Available • Fully Insured  
NO PAYMENT UNTIL COMPLETION  
[bashanspainting@earthlink.net](mailto:bashanspainting@earthlink.net)**



**Meadowlake  
Pet Resort**  
*Bringing Country Fun to the City*

**CALL  
713-413-1633  
to reserve your  
spa package today.**

### NOW OFFERING Full Service Grooming & Pampering

Does your precious pup need a spa day?  
These are just a few of the great services that Meadowlake's state of the art spa offers...

- Ultra Premium Shampoos & Conditioners
- Blueberry Facial Scrub
- FURminator DeShed Treatment
- Full Service Groom
- Rock Star & A Night on the Town Packages
- Full Service Bath

**pet lodging | daycare | training | grooming**

13500 Furman Road • Houston, Texas 77047  
713.413.1633 • [www.meadowlakepetresort.com](http://www.meadowlakepetresort.com)

# NEWS YOU CAN USE

## Eight Water Safety Rules for a Safe Pearland Summer

We are dedicated to promoting drowning prevention and helping equip Pearland residents with the best tools to keep Pearland families safe in and around water.

1. Always have a pool gate around home pools. This includes having a locked and securely fastened gate that is not accessible to little ones.
2. Continuously educate children on water safety. This is a great thing to do at home, on the boat, at the pool, wherever there is water. Each time you are getting your little one ready for a swim session or water play, go over the rules of water safety. Repetition is key with small children. Make sure your swim instructor incorporates a "Safety Lesson of the Week" into its lesson curriculum. This includes questions about water safety and how to avoid dangerous situations.
3. Designate a "Water Watcher." This is a responsible adult who sticks to alcohol-free beverages during swim time and who is in charge of keeping both eyes on the pool while it is in use. Or, better yet: consider renting a Lifeguard for your party or group event.
4. Remove all pool toys, floaters, ring buoys and other child-enticing items from the pool area when it is not in use. One wrong reach for that floating rubber ducky could be disaster.
5. Clear homes of common household items that can be dangerous to a curious toddler. It takes just 2 inches of water for a child to drown in a bucket. Put all mop buckets, dog dishes and coolers out of children's reach.
6. Never leave a young child in the pool or bathtub--even "just to get the phone."
7. Enroll your child in swim classes. Start lessons early. The longer a child has lessons the more they understand water safety. A great time to do this is in the spring! This way your kids are already prepped and ready to roll for the summer swim season. You'll want to find an inside heated pool and lesson times geared towards working families.
8. Supervise, Supervise, Supervise! Try to have your eyes on your children in and around the pool at all times. Adults should always be present when any child is in the pool area.

Let's help our kids love the water while also respecting it by being safe and well-trained at all levels.

- Submitted by Lynn Neillie

Thinking of buying or selling a home?

*Consider this...*

A real estate agent that is also a knowledgeable local resident with community insight only gained from growing up in this area.

Innovative marketing and advertising solutions to get your property to the forefront of its competition.

Experience in every type of property transaction.  
From vacant land to million dollar homes.

Customer service that makes you feel like you are the only client.

*For the best in next generation real estate services, contact:*



Jenifer Duguay Mikeska  
 "Everything I touch turns to SOLD!"  
Direct: 281.844.5969  
Email: jenifersellshomes@gmail.com

Start or continue your home search at:  
[www.PearlandTXHomefinder.com](http://www.PearlandTXHomefinder.com)

Dr. Manley R. May, DVM ❖ Dr. C. Corbett Post, DVM

## PEARLAND PET HEALTH CENTER

- \* Preventative Health Care
- \* Avian/Exotic Medicine
- \* Vaccinations
- \* Critical Care
- \* Surgery
- \* Internal Medicine
- \* Nutritional Consultation
- \* Advanced Diagnostic Screens



- \* In-House Lab Work
- \* Ultrasonography
- \* Electrocardiology
- \* Dentistry
- \* Radiology
- \* Boarding/Bathing
- \* Home Again Microchipping
- \* Euthanasia/Cremation Services

**Bring in this ad and get  
10% OFF SERVICES  
on your first visit!**  
(New Clients Only)



**OFFICE HOURS:**  
**MON-FRI:** 8:00am – 6:00pm, **SAT:** 8:00am – 1:00pm  
**DROP OFF HOURS:** 7:00am – 9:00am  
*Walk-Ins Welcome, Appointments Preferred.*



**(713) 436-2555**  
10525 Hughes Ranch Rd. (CR 403)  
Pearland, TX 77584  
[www.pearlandpethealthcenter.com](http://www.pearlandpethealthcenter.com)

## Sudoku

The challenge is to fill every row across, every column down, and every 3x3 box with the digits 1 through 9. Each 1 through 9 digit must appear only once in each row across, each column down, and each 3x3 box.

8		3				9		
								1
	9	5						6
			6		2			
								7
	1	4	9					8
	4						9	
		1			7	2		3
6	7		3					

\*Solution at [www.PEELinc.com](http://www.PEELinc.com)

© 2007. Feature Exchange



**LeBlanc**  
Insurance Agency

FARMERS

**OBJECTIVE: Personal Service**

11711 Shadow Creek Pkwy, #145

**WELCOME!**

**713.436.4707**

[www.LeBlancInsuranceAgency.com](http://www.LeBlancInsuranceAgency.com)

Personal & Business Insurance



**FREE \*STOP FORECLOSURE\* CONSULTATION**  
We Help **SAVE** or **SELL** Your HOME - **YOUR CHOICE!**

Get a **FREE REPORT** by going to  
[www.stophoustonforeclosuretoday.com](http://www.stophoustonforeclosuretoday.com)



OR Call  
\*Nannette - 713-826-3656  
\*Cindy - 832-755-5462

[info@stophoustonforeclosuretoday.com](mailto:info@stophoustonforeclosuretoday.com)

\*Hold Real Estate License in Texas

# Advertise YOUR business to YOUR neighbors for less than 4¢ per home.

*Effective Advertising, Done Right.*

*Call today to Reserve your space.*

**Peel, Inc.**  
COMMUNITY NEWSLETTERS

**512-263-9181**  
[www.PEELinc.com](http://www.PEELinc.com)

SCR





## Over 6,400 SOLD! These in 2009!

4811 Lakefront Terrace	9518 Ashville	3519 Maverly Crest Court
1407 Barras	3218 Edgewood	4151 Sorenson
5331 Carmichael Circle	4542 Mayflower	1022 Bristol Way
3607 Englewood	1039 Sussex Trail	2905 Southbay
13910 Littleborne Birdwell	1439 Crystal Lake Circle	16711 Herridge
2710 Sandal Walk	11207 Briscoe Lane	3342 Southdown
14202 Stone Bluff	26123 Savory Springs	2662 Skyview Trace
3603 Beacon Court	3523 Sivercreek	3036 Brooks Court
3626 Garrettsville	2914 Burgess Hill Court	1002 Bayhill
3803 Wimberley Hollow Lane	15815 Ironside Creek Drive	1126 Lasso Court
2707 West Oaks Boulevard	13620 Barton Meadow Court	0 Lee Road
3211 Southdown	3622 Willow Springs	3310 Stanton Court
11207 Murr Way	12205 Hidden River	2214 Manchester
3402 Huisache Court	2643 Skyview Grove Court	3010 Ashton Park
4707 Cedar Hill	105 Brigadoon10939	4202 Brentwood Park Drive
3210 Bensus Court	3815 Addison Drive	8114 Woodward
9001 Sungate	5421 Jefferson	3630 Quiet Meadow
903 N Wellsford	19082 CR 669D	5319 Dalton Reach
11315 Windy Creek Drive	3015 Becket	17507 Shadow Lawn
5802 Orchard Spring	Arendale	2738 S Cedar Hollow Drive
4540 Mayflower	1022 Tennyson	3207 Berryfield
3826 Forney Ridge	3214 N Peach Hollow	4806 Lakefront Terrace Court
3214 Edgewood	0 Blue Jay	5306 Silver Sage Lane
8107 Twin Hills	3307 Lightstar	2514 Cardinal Elm Street
4026 Ashview	2041 Lee Road	11304 Palm Bay
4102 Galloway	14310 Windy Crossing	8302 Radial Court
3410 Glastonbury	2511 Pecan Grove	3223 Worthington
10003 Hidden Falls	1003 Vatican Court	1122 Eastbour
2111 Woodland Court	7808 Gladstone	1122 Eastbourne
1039 S Wellsford	2712 Sienna Springs	1007 S Wellsford
2730 Skyview Knoll Court	4313 Leeland Street	4522 Fox Run
9612 Fairbrook Way	3519 Cascade Springs	4822 Linden Place
3614 Chadwick	1702 S Baden Oaks	822 N Wellsford
2709 Golden Creek	3302 Lawson	2603 Granite
3103 Aspen Lake	2806 White Oak	6503 Woodhaven
3502 Parkshire	3404 Beacon Bend Court	3318 Boursome
3706 Chatwood	2930 S Peach Hollow	11906 Southern Trails
3227 Spring Ridge Drive	13234 Stafford Colony	2419 Lansing
2475 Woodbury	6815 Caset Court	16230 Knollridge Court

**Your Home Here!**  
Experience the **MAGIC**  
of the  
**Pearland Sam**  
**TEAM!**



**Sam**  
**FERRERI**

**PearlandSamTEAM.com**



RE/MAX Top Realty Each Office Independently Owned and Operated.

***Selling Your Home?***

**Call**  
**PEARLAND'S**  
**#1 REALTOR!**

**(YEAR AFTER YEAR)**

**LISTED**  
**STAGED**  
**MARKETED**

**Sam *SOLD* It.com**

**CALL TODAY!**  
**832-200-5656**

Direct Impressions *457* Marketing