

THE Current

SHADOW CREEK RANCH

September 2010

Official Publication of the Shadow Creek Ranch HOA

Volume 2, Issue 9

YARD OF THE MONTH WINNERS!



1. Meadow Trails West - Ms. Donna
2. Meadow Trails East - The Flores Family
3. Trinity Shores - The Parks Family

Congrats Neighbors!



IMPORTANT NUMBERS

EMERGENCY NUMBERS

EMERGENCY	911
Fire.....	911
Ambulance.....	911
Sheriff – Non-Emergency.....	281-331-9000
Pearland Police Department	281-997-4100

SCHOOLS

Mary Marek Elementary	281-245-3232
Laura Ingalls Wilder Elementary	281-245-3090
Manvel Junior High	281-331-1416
Alvin Senior High	281-331-8151
Manvel High School	281-245-2235
Alvin ISD Administration	281-338-1130
Alvin ISD Transportation	281-331-0960

UTILITIES

Electricity - Reliant Energy.....	713-207-7777
Gas - Center Point	713-659-2111
Trash Removal - City of Pearland	281-652-1600

OTHER NUMBERS

Pearland Post Office	281-485-2132
Poison Control.....	800-764-7661
Brazoria County Health Department	979-864-1484
Animal Control.....	281-756-2265

CITY

Pearland City Hall.....	281-652-1600
Pearland Utility Billing - Water Dept.	281-652-1603
Pearland Animal Control.....	281-652-1970
Pearland Police Dept - Non-Emergency	281-652-1100
Pearland Public Works.....	281-652-1900

NEWSLETTER

Articles	shadowcreekbranch@peelinc.com
Publisher	
Peel, Inc.	1-888-687-6444
Advertising	1-888-687-6444

MGMT COMPANY

ASSOCIATION MANAGEMENT, INC.

Community Manager	
Maria Southall-Shaw.....	713-332-4675
On-Site Manager	
Bobbie Lopez.....	832-436-5215
On-Site Manager	
Kimberlyn Fruia	832-436-5222
Service Specialist	
Erin Reina	713-332-4685
Property Maintenance	
Mark Simien.....	832-276-2488

www.AMITX.com

NOT AVAILABLE
ONLINE

Business Classifieds

LESS THAN A PENNY: You can run a business classified in The Current and reach all of Shadow Creek Ranch for less than a penny per home. Call 512-263-9181 for details.

Classified Ads

Personal classifieds (one time sell items, such as a used bike...) run at no charge to Shadow Creek Ranch residents, limit 30 words, please e-mail shadowcreekbranch@peelinc.com.

John LeBlanc *OBJECTIVE: Personal Service*
713.436.4707 www.LeBlancInsuranceAgency.com
jleblanc1@farmersagent.com 11711 Shadow Creek Pkwy, #125

Always
Working



Personal & Business Insurance

Dog and Cat Vaccination and Health Clinic

Rabies vaccination \$9.95
 All other vaccinations and medicine at reduced rates.

www.themobilevetclinic.com
 936-447-5033

DATE: September 21st (Tuesday)

TIME: 4:00 until 7:00

LOCATION: 2034 Trinity Bay Dr (Diamond Bay Water Park)

BRAZORIA COUNTY MUNICIPAL UTILITY DISTRICT NO. 26

Standard Notice

As a reminder, the City of Pearland operates our water and sewer system and provides garbage collection services. If you have any questions about your service, please call the City of Pearland at (281) 652-1603.

The District generally meets every first Tuesday at 11:00 a.m. at the offices of Allen Boone Humphries Robinson LLP, 3200 Southwest Freeway, Suite 2600, Houston, Texas 77027. Agendas for each meeting are posted at the Emerald Village Recreation Center, 11814 N. Clear Lake Loop, Pearland, Texas 77584, and at the Brazoria County Courthouse at least 72 hours before every meeting, and the Board of Directors invites all members of the public to attend its meetings. Please contact (713) 860-6439 if you need confirmation of a Board meeting.



Details are still being confirmed for the Sunday of Labor Day Weekend! Please contact Jai & Katie at thedaggetts2008@gmail.com.

When You're Ready to Sell
Call The Experts at the Front Door of YOUR Community!



Cathy Spacek

832-643-7768

cathy@cathyspacek.com

Top Producer &
Resale Specialist

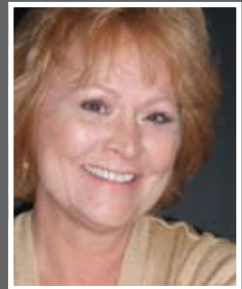
★ ★ Platinum
2005 2006 Producer

The Original Shadow Creek Ranch Realtors
Specializing in Your Community

Maximum Exposure of Your Listing
*Located in the SCR Visitors Center, and Welcoming
More Walkin Buyers Than Any Other
Real Estate Company*

**Even More Exposure with Our Exclusive
Live Online Chat**

*Reaching Out to Buyers Worldwide...
24 Hours a Day, 7 Days a Week*



Ricki Stockwell

713-306-3773

redrock811@aol.com

SCR Top Producer

Platinum ★ ★ ★
Producer 2004 2005 2006
★ ★ ★
2007 2008 2009

SHADOW CREEK RANCH

Mark Your Calendars for the Plant Thyme Fall Luncheon and Plant Sale October 8th

Keep Pearland Beautiful (KPB) invites all to the 7th Annual 'Plant Thyme Fall Luncheon' in conjunction with the 6th Annual Herb and Plant Sale – at the Pearland Community Center, 3523 Liberty Dr., on Friday, October 8. Luncheon tickets are \$30, with proceeds benefiting KPB projects and our new Environmental Education Center Building Fund.

This year's speaker will be Brenda Beust Smith, the Houston Chronicle's "Lazy Gardener". Ms. Smith started her Houston Chronicle gardening column over 30 years ago, thinking that it would appeal to harried homeowners. Those time-saving "lazy" gardener techniques are today a banner for those concerned about the environment and indiscriminate use of pesticides.

She is a nationally published freelance writer, a nationally published professional photographer and has served on the boards of many area gardens. She is a longtime Harris County Cooperative Extension supporter, both as a Master Gardener and former committee chairman.

The doors to the Center will be open at 10:30am, where a silent auction will also take place in conjunction with the luncheon. Laura Austin, our auction chair, has done a great job collecting exciting gifts

for this year's auction. This year's luncheon is being organized by our fund Development Chair, JoAnne Knodel. JoAnne has generously donated to the luncheon as a Rosemary Sponsor, in memory of her late husband Joe Miller. Joe was an avid environmentalist and faithful supporter of Keep Pearland Beautiful.

Please make your plans now to be on hand for the Plant Thyme Fall Luncheon and Plant Sale on October 8, 2010. Plants from the sale will also be available for purchase on October 9, 2010 at the Pearland Farmers Market, located at Zychlinski Park, 2243 Grand Blvd. Call 281-652-1659 for ticket or plant sale information.

Pool Party Anyone?

Shadow Creek Ranch Residents! Are you interested in having a private pool party at one of our three beautiful pools.

Contact Poseidon Pool Company at 281.338.7665 or Info@poseidonpools.net for rates and availability.

When It's
**TRULY AN
EMERGENCY ...**



We Provide Expert Care STAT!

Did you know that in many hospital emergency rooms, you could spend up to 10 hours in the waiting room while your condition possibly worsens? If you are experiencing a true medical emergency, minutes can be critical. That's why it's important to see an expert as quickly as possible.

At Texas Emergency Care Center, you will always be seen by a physician who is Board Certified in Emergency Medicine. What's more, the average wait time is less than 20 minutes, depending on the severity of patients being treated.

**24-Hour Emergency Care
That's Close To Home.**



**T E X A S
EMERGENCY CARE
C E N T E R™**

READY OR NOT ... WE ARE.™



Accredited by the Joint Commission of Accreditation of Healthcare Organizations for our commitment to excellence.

txercare.com

All private insurance accepted.

PEARLAND

3115 Dixie Farm Road, Suite 107
FM 518 at Dixie Farm Road
281-648-9113

CYPRESS

17255 Spring Cypress Road, Suite A
Spring Cypress at Skinner Road
281-304-9113

Mosquito Control

Mosquito control in Pearland is handled by the counties. Pearland is part of several counties, and the mosquito control numbers for each are listed below:

- Brazoria 281-331-6101 ext. 1532, or 281-756-1532
- Harris 713-440-4800
- Fort Bend 281-342-0508
- Galveston 800-842-5622

They are all receiving a lot of calls right now so you may need to leave a voice mail. To speed things up, they will need your subdivision as well as your name, address, and phone number.

HOA Payments

Please note that HOA payments may be conveniently made at the office at 12234 Shadow Creek Parkway Bldg 3, Ste 114.

Bashans Painting & Home Repair

**Commercial/Residential
Free Estimates**

281-347-6702



- Interior & Exterior Painting
- Hardi Plank Installation
- Wood Replacement
- Sheetrock Repair
- Interior Carpentry
- Cabinet Painting
- Wallpaper Removal and Texturizing
- Pressure Washing
- Fence Repair/Replacement
- Garage Floor Epoxy
- Custom Staining
- Roofing
- Gutter Repair/Replacement
- Faux Painting

**References Available • Fully Insured
NO PAYMENT UNTIL COMPLETION
bashanspainting@earthlink.net**

CITY OF PEARLAND

Fall Clean-Up

SATURDAY, SEPTEMBER 11, 2010

8:00AM - NOON

**STELLA ROBERTS RECYCLING CENTER,
5800 MAGNOLIA, PEARLAND**

Our fall community wide clean-up is one of 2 clean-ups that Keep Pearland Beautiful has each year. We start out the morning at the Stella Roberts Recycling center at 8:00AM with breakfast and coffee. Volunteers will then be given the materials that they need to pick up litter and trash at their Adopt-a-Spot or at other sites in Pearland. Groups and Individuals are welcome to attend. Please help us to make Pearland the cleanest and most beautiful city in Texas. If you have any questions about the clean-up, please call our office at 281-652-1659.



979.265.1770

Experience Counts!

**EARLY VOTING
OCTOBER 18-29
ELECTION DAY
NOVEMBER 2**

· EARLY VOTING LOCATIONS ·

- | | |
|--|--|
| ANGLETON MAIN:
East Annex
(Old Wal-Mart Building)
1524 E. Mulberry, Room 144 | MANVEL BRANCH:
Courthouse North Annex
7313 Corporate Dr. |
| ALVIN BRANCH:
Alvin Library 105 S. Gordon | EAST PEARLAND BRANCH:
Justice Of The Peace, Pct. 3
Pl. 2 Courtroom
2436 S. Grand Blvd. |
| BRAZORIA BRANCH:
Precinct 4 County Barn
1001 Market St. | WEST PEARLAND BRANCH:
Westside Event Center
2150 Countryplace Pkwy. |
| CLUTE/LAKE JACKSON BRANCH:
Brazosport College
500 College Drive | SWEENEY BRANCH:
Sweeny Community Center
205 W. Ashley Wilson Rd. |
| FREESPORT BRANCH:
Freesport Library
410 Brazosport Blvd. | WEST COLUMBIA BRANCH:
W Columbia City Hall 512 E. Brazos |

WWW.DORABONNERFORJUDGE.COM

SHADOW CREEK RANCH

BIKE SAFETY

Bike riding is a great way to get exercise and fresh air and share time as a family. But before you and the kids rush out and start pedaling, there's an important factor that you need to consider — safety.

Helmet Basics

Bicycle helmet use should not be optional for anyone in your family, no matter where you are or how short the ride. In many states it's the law.

Here's why: Most bike accidents involve a head injury, so a crash could mean permanent brain damage or death for someone who doesn't wear one while riding. In fact, each year in the United States, about half a million kids are seriously injured in bicycle-related accidents, and most of those injuries could have been avoided if a helmet was worn.

HERE ARE SOME THINGS TO KEEP IN MIND WHEN BUYING A HELMET:

- Pick bright colors that are visible to drivers and other cyclists.
- Look for a helmet that's well ventilated.
- Make sure that the helmet has a CPSC or Snell sticker inside. These indicate that the helmet meets standards set by the Consumer Product Safety Commission (CPSC) or the Snell Memorial Foundation, a nonprofit group that tests helmet safety.

- Make sure your child's helmet fits correctly and can be adjusted.

You should be able to get help finding a well-fitting helmet and adjusting it properly at any bicycle store.

When kids wear a helmet, make sure that the straps are fastened. Also make sure they don't wear any other hat underneath it.

Be sure to replace any helmet made before 1999. If your child hits any surface hard while wearing a helmet, replace it — helmets lose their capacity to absorb shock after taking serious hits.

A few bike helmets can be used as protection for other activities, but in general, they're best suited to biking. Most helmets are made for one specific type of activity — for example, special helmets also are made for inline skating, baseball, and snowmobiling.

Kids should not wear any helmet when they're on a playground or climbing a tree — there is a risk of strangulation from the chin strap during these types of activities.

SAFE CLOTHING

What kids wear when riding a bike is also very important for safety:

- Fluorescent or bright-colored clothes will help kids be visible on the road. (Avoid dark clothes, especially during early dusk and twilight hours.)

(Continued on Page 7)



25% OFF

**GET YOUR CUSTOMER'S
ATTENTION**

Need new printed material? Now is the perfect time to replenish your print supplies!
Want to increase business? Promote your business with a mailer, flyer or postcard!

**Call today! Any new order of
\$100 or more receives 25% OFF**
offer ends September 30th, 2010

Quality
PRINTING COMPANY

**512.263.9181 ext 24
printing@peelinc.com**



**149TH Judicial
District Court
Brazoria County
Democrat**


**Elect
FAYE GORDON
For JUDGE**

**Early Voting - October 18-22, 2010
General Election - November 2, 2010
www.fayegordon.com**

**pol. ad. paid for by Terry D. Gordon, Treasurer,
13 N. Cay Ct., Angleton, Texas 77515, Tel: 979.849.3330**

Bike Safety - (Continued from Page 6)

- Lightweight clothes will help them avoid becoming overheated.
 - Pant legs shouldn't be too loose-fitting or flared. These can get caught up in the chain while riding.
 - If your child wears a backpack while riding, make sure the straps are tied up and can't get tangled in the spokes of the wheels.
 - Choose shoes that grip the bike's pedals. Cleats, shoes with heels, or flip-flops can all create problems while riding. Kids should never ride barefoot!
- RULES OF THE ROAD FOR BIKE RIDING**
- Here are some must-know safety tips to teach kids:
- Stop at all stop signs and obey traffic lights just as cars do. Yield to pedestrians, stop at red lights, and be especially careful at intersections.
 - Always ride in the same direction as cars do. Never ride against traffic.
 - Try to use bike lanes or designated bike routes whenever you can — not the sidewalk!
 - Never ride at dusk or in the dark.
 - Always stop and check for traffic in both directions when leaving a driveway, an alley, or a curb.
 - Watch traffic closely for turning cars or cars leaving driveways.
 - Don't ride too close to parked cars — doors can open suddenly.
 - Always walk a bike across busy intersections using the crosswalk and following traffic signals.
 - When riding in a group, always ride single file on the street.
 - When passing other bikers or people on the street, always pass to their left and call out "On your left!" so they'll watch for you.
 - Never share the seat with a friend or ride on the handlebars — only one person should
- (Continued on Page 8)



Does This Helmet Fit?

A bike helmet fits well if it:

- sits level on the head
- isn't tilted forward or backward
- has strong, wide straps that fasten snugly under the chin
- is tight enough so that after fastening, no sudden pulling or twisting could move it around

Electricity is **ON SALE** at StarTex Power!



Alan "Petrodamus" Lammey, host of 'Energy Week', can be heard every Sunday on 1070 KNTH in Houston.

I'm Texas Energy Analyst, Alan Lammey. In case you didn't know, electricity rates are currently at lows not seen in years, which means that NOW is the time to lock in a very low electricity rate with the provider that I highly recommend to all my radio show listeners: StarTex Power. StarTex Power is local and reputable, with some of the most competitive rates available in all of Texas. You can switch right online at www.StarTexPower.com

Sign Up Today Online: www.StarTexPower.com or call 866-917-8271
PLEASE USE "NEIGHBORHOOD NEWSLETTER" as your referral!



*"Highest in Residential Customer Satisfaction
with Retail Electric Service"*
... J.D. Power and Associates



StarTex Power received the highest numerical score among residential electric service providers in Texas in the proprietary J.D. Power and Associates 2009 Texas Residential Retail Electric service Satisfaction Study™. Study based on responses from 6,890 consumers measuring 15 providers and measures opinions of consumers with their electric service provider. Proprietary study results are based on experiences and perceptions of consumers surveyed between October 2008 and June 2009. Your experiences may vary. Visit jdpower.com.

SHADOW CREEK RANCH

Bike Safety - (Continued from Page 7)

be on a bike at a time. It's easy to lose balance or suddenly swerve into traffic when riding with a passenger.

- Never wear headphones while biking — it's essential to hear everyone else on the road at all times.
- Never stand up while riding a bike.
- Never hitch a ride on a moving vehicle.
- Never change directions or lanes without first looking behind you, and always use the correct hand signals. Use your left arm for all hand signals:
 - o Left turn: After checking behind you, hold your arm straight out to the left and ride forward slowly.



LEFT TURN



STOP

- o Stop: After checking behind you, bend your elbow, pointing your arm downward in an upside down "L" shape and come to a stop.
- o Right turn: After checking behind you, bend your elbow, holding your arm up in an "L" shape, and ride forward slowly. Or, hold your right arm straight out from your side.



RIGHT TURN



RIGHT TURN ALTERNATIVE

BIKE MAINTENANCE

Check your child's bike at least once each season to keep it safe and well-maintained.

(Continued on Page 10)





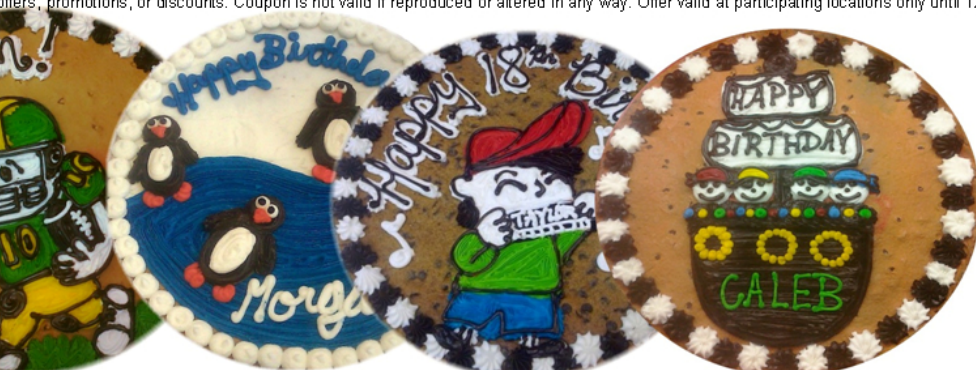
THE ORIGINAL COOKIE CAKE™

Fresh Baked, Perfect For Any Occasion, Ready In Just 5 Minutes!

Redeem this coupon for
\$5 OFF
any 16" or larger Cookie Cake

*Baybook Mall *Brazos Mall *Deerbrook Mall *Houston Premium Outlets, First Colony Mall
 *Katy Mills *Pearland Town Center *Willowbrook Mall

© 2010 Cookie Associates, LTD a franchisee of Great American Cookies. Coupon has no cash value and may not be combined with any other offers, promotions, or discounts. Coupon is not valid if reproduced or altered in any way. Offer valid at participating locations only until 12/31/10.



Stork Report in Shadow Creek Ranch

RYAN WILLIAM BASKINGER

Born June 17th, 6lbs 17.75 inches

&

MATTHEW JOSEPH BASKINGER

Born June 17th, 5lbs 13oz
19.5 inches

Proud Parents: Rob and Cidnea Baskinger

Proud Big Sister: Olivia Ann Baskinger

SYMONE KRISTINA LEWIS

Born March 12th, 7lbs and 21 inches

Proud Parents: Sharhonda and Joseph Lewis

Proud Big Brothers: Jason and Jordan Scott



ALEXANDRA MARIE BALDIN

Born July 9th, 10lbs 9 oz

Proud Parents: Lisa and Rob Baldin

EDWARD OZ FRANCO

Born June 15th, 7lbs 21 inches

Proud Parents: Oscar and Janie Franco

Proud Big Sister: Caroline



RYDER KERR

Born July 28th, 7lbs. 1 oz.
20 3/4 inches

Proud Parents: Cheryl and
Shawn Kerr

Proud Big Sister: Hadley



NICHOLAS JAMES STATON

Born: July 3rd, 9lbs 6oz, 21.5 inches

Proud Parents: Adam and Carrie Staton



Submit your information on the arrival of
your little one to cypressmill@peelinc.com

The Current is the official publication of the Shadow Creek Ranch Maintenance Association. At no time will any source be allowed to use The Current's contents, or loan said contents, to others in anyway, shape or form, nor in any media, website, print, film, e-mail, electrostatic copy, fax, or etc. for the purpose of solicitation, commercial use, or any use for profit, political campaigns, or other self amplification, under penalty of law without written or expressed permission from the Shadow Creek Ranch Maintenance Association and Peel, Inc. The information in the newsletter is exclusively for the private use of Shadow Creek Ranch and Peel, Inc.

DISCLAIMER: Articles and ads in this newsletter express the opinions of their authors and do not necessarily reflect the opinions of Peel, Inc. or its employees. Peel, Inc. is not responsible for the accuracy of any facts stated in articles submitted by others. The publisher also assumes no responsibility for the advertising content with this publication. All warranties and representations made in the advertising content are solely that of the advertiser and any such claims regarding its content should be taken up with the advertiser.

* The publisher assumes no liability with regard to its advertisers for misprints or failure to place advertising in this publication except for the actual cost of such advertising.

* Although every effort is taken to avoid mistakes and/or misprints, the publisher assumes no responsibility for any errors of information or typographical mistakes, except as limited to the cost of advertising as stated above or in the case of misinformation, a printed retraction/correction.

* Under no circumstances shall the publisher be held liable for incidental or consequential damages, inconvenience, loss of business or services, or any other liabilities from failure to publish, or from failure to publish in a timely manner, except as limited to liabilities stated above.

Get on the Best Sellers List!

with



Patty McCracken



281-686-9301

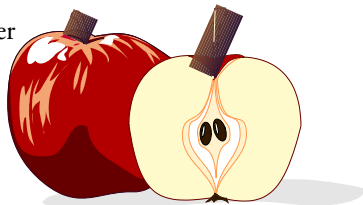


Email: pattymccrackensells@gmail.com

SHADOW CREEK RANCH

Recipe of the Month Apple Cake

3 medium apples, peeled & thinly sliced
1/4 Cup plus 1 tablespoon sugar
1 tablespoon plus 2 teaspoons cinnamon
3 cups flour
2 cups sugar
1 tablespoon baking powder
1 teaspoon salt
4 eggs, beaten
1 cup vegetable oil
1/4 cup orange juice
1 tablespoon vanilla



Combine first 3 ingredients, tossing well. Set aside. Combine flour, 2 cups sugar, baking powder, and salt in a large mixing bowl. Combine next 4 ingredients; add to flour mixture, mixing well. Pour 1/3 of batter into a greased and floured 10 inch tube pan. Top with half of the thinly sliced apples, leaving a 1/2" margin around center and sides. Repeat layering, ending with batter on top. Bake at 350° for 1 hour or until a wooden pick comes out clean. Cool in pan 10-15 minutes; then remove from pan. Let cool completely. Sprinkle with powdered sugar, if desired.

Do You Have Reason To Celebrate?

We want to hear from you! Email shadowcreekranch@peelinc.com to let the community know!

Bike Safety - (Continued from Page 8)

Be sure to check:

- tires — inflate to the pressure that's recommended on the sidewall of the tire
- chain — oil it regularly and remove dirt
- handlebars — adjust for height as your child grows and tighten all bolts
- brakes — check for frayed cables and replace worn-out brake pads
- seat — keep the seat level and adjust for height as needed

MAKING SAFETY A FAMILY AFFAIR

One of the best ways to help kids learn safe bike riding is to set a good example by following the rules of the road yourself. Go for bike rides with your kids so you can show them what safe riding looks like. It's also a great way to stay active as a family and get valuable together time that you'll all enjoy!

Reviewed by: Kate Cronan, MD
Date reviewed: May 2007

This information was provided by KidsHealth, one of the largest resources online for medically reviewed health information written for parents, kids, and teens. For more articles like this one, visit www.KidsHealth.org or www.TeensHealth.org. ©1995-2006. The Nemours Foundation

AMI Now Accepts Online Bill Payments Through PayLease

Homeowners need to go to www.amitx.com and click on the "payment options" button on the home page where you is a tab for the PayLease website. Enter their account number and last name. PayLease will verify their account and log them in. Select "make payment" to make a single payment or "automatic payments" to set up an automatic debit each month. Standard processing takes 2-3 business days. ExpressPay process payments for the next business day deposit. PayLease also offers an over the phone payment option at 866-729-5327.



FARMERS

AUTO - HOME - WIND - FLOOD - LIFE

NEW Rates & Discounts! Ask for a quote today, and see how much you can save.

Helping you protect what matters most.

Viet Nguyen - Your Local Shadow Creek Ranch Agent

9330 Broadway St - Ste 326 / Pearland TX 77584



(281) 741 - 7331 / vnguyen4@farmersagent.com

SHADOW CREEK RANCH



Airport

Transfer

713-339-4088

executransport@gmail.com

Towncar transfers to and from IAH and Hobby

WANTED

— BY PEEL INC. —

ENERGETIC SALES REPRESENTATIVES

 **REWARD** 

COMMISSION BASED INCOME

WANTED FOR WORKING FROM HOME,
EARNING EXTRA INCOME, AND
SELLING ADS IN YOUR NEWSLETTER

VISIT WWW.PEELINC.COM/JOBS.PHP FOR MORE INFORMATION

888-687-6444 | WWW.PEELINC.COM

Peel, Inc.

311 Ranch Road 620 S. Ste 200
Lakeway, TX 78734-4775
www.PEELinc.com

PRSRT STD
U.S. POSTAGE
PAID
PEEL, INC.

SCR

“Morning Coffee with Pearland Sam”

LIVE



Open Houses 7:45am Weekdays
online at www.PearlandTexas.TV



**Sam
FERRERI**

PearlandSamTEAM.com

RE/MAX Top Realty Each Office Independently Owned and Operated.

*Dream Big,
Live Life,
HIRE SAM!*



NEW! Download My **FREE**
Mobile Apps for
iPhone, iPad and Android.

832-200-5656 SamF@Remax.net

Direct Impressions  Marketing 713.545.1269