

THE Current SHADOW CREEK RANCH

October 2010

Official Publication of the Shadow Creek Ranch

Volume 2, Issue 10

BRAZORIA-FORT BEND COUNTY MUD #1 *SHADOW CREEK RANCH SPORTS PARK*

Quick Facts about Shadow Creek Ranch Sports Park

Brazoria-Fort Bend County Municipal Utility District No. 1 and Brazoria County Municipal Utility District No. 26, otherwise known as the MUDs, are in the Shadow Creek Ranch Master Planned Community in Pearland. The MUDs, working with the City of Pearland, have developed a master plan for the Shadow Creek Ranch Sports Park to be built at the intersection of Shadow Creek Ranch Parkway and Kingsley Drive. The MUDs and the City want to work together to build this Park. The Park is estimated to cost \$19 million.

Background

The basic outline of the Park was developed by the City utilizing input from residents throughout the City. The MUDs took the City's Plan and updated it to group the playfields more closely by sport. Additionally, the plan includes more soccer / multi-purpose fields than the original plan. Also, included are more picnic pavilions and a kite flying hill, large slides, climbing rocks, and a lawn games area.

Using Bonds to Build the Park

The MUDs are giving their residents the chance to decide whether they are for or against the issuance of MUD bonds to start building the first phase of the Park in 2011, which is estimated to cost about \$12 million. The MUDs are sharing the costs roughly 2/3 share to MUD 26 and 1/3 share to MUD 1, based on the respective number of homes and estimated population. MUD 26 would issue \$7.5 million in bonds and MUD 1 would issue \$4.5 million in bonds to build the first phase of the Park. The City will issue City bonds to pay for the future phases of the Park. Both MUDs can issue the MUD bonds in 2011 without a tax rate increase.

The Election

Federal election laws require the MUDs to translate election information into Spanish. On November 2, 2010, registered voters

in Shadow Creek Ranch will have the chance to vote for or against park bonds. The amount of bonds to be voted on in MUD 26 are \$7,500,000 and in MUD 1 are \$4,500,000. The MUDs will only build the park if the election passes. The ballot will read to vote "for" or "against" the following:

PROPOSITION - THE ISSUANCE OF BONDS FOR RECREATIONAL FACILITIES AND THE LEVY OF TAXES IN PAYMENT OF THE BONDS

- Early voting October 18th – 29th
- Election Day is November 2, 2010.

Frequently Asked Questions

How will the MUD bonds be repaid? From your MUD taxes. The MUDs have figured out they can issue these bonds without an increase in their MUD tax from the 2009 or 2010 tax amount.

What will be built in phase one? The MUDs will work with the City to determine what facilities will be in phase 1. The MUDs expect to build six (6) soccer / multi-use fields, eight (8) 200' size baseball fields, three (3) concession areas, three (3) large pavilion / restroom facilities, two (2) playgrounds, parking, two (2) picnic pavilions, six (6) volleyball courts, a lawn games area, amphitheater area, trails, entry drive, site lighting, park signage, landscape and irrigation.

When will construction start? If the MUDs get approval to proceed, they have to submit a bond application to the Texas Commission on Environmental Quality. This takes about 6 to 9 months for approval. While the MUDs are waiting on approval, they will start design. After the TCEQ approves the bonds, they will be sold and construction will begin as soon as possible, which the MUDs hope will be before the end of 2011.

(See Map on Pages 6-7)

IMPORTANT NUMBERS

EMERGENCY NUMBERS

EMERGENCY	911
Fire.....	911
Ambulance.....	911
Sheriff – Non-Emergency.....	281-331-9000
Pearland Police Department	281-997-4100

SCHOOLS

Mary Marek Elementary	281-245-3232
Laura Ingalls Wilder Elementary	281-245-3090
Manvel Junior High	281-331-1416
Alvin Senior High	281-331-8151
Manvel High School	281-245-2235
Alvin ISD Administration	281-338-1130
Alvin ISD Transportation	281-331-0960

UTILITIES

Electricity - Reliant Energy.....	713-207-7777
Gas - Center Point	713-659-2111
Trash Removal - City of Pearland	281-652-1600

OTHER NUMBERS

Pearland Post Office	281-485-2132
Poison Control.....	800-764-7661
Brazoria County Health Department	979-864-1484
Animal Control.....	281-756-2265

CITY

Pearland City Hall.....	281-652-1600
Pearland Utility Billing - Water Dept.	281-652-1603
Pearland Animal Control.....	281-652-1970
Pearland Police Dept - Non-Emergency	281-652-1100
Pearland Public Works.....	281-652-1900

NEWSLETTER

Articles	shadowcreekbranch@peelinc.com
Publisher	
Peel, Inc.	1-888-687-6444
Advertising	1-888-687-6444

MGMT COMPANY

ASSOCIATION MANAGEMENT, INC.

Community Manager	
Maria Southall-Shaw.....	713-332-4675
On-Site Manager	
Bobbie Lopez.....	832-436-5215
On-Site Manager	
Vacant.....	
Service Specialist	
Erin Reina	713-332-4685
Property Maintenance	
Mark Simien.....	832-276-2488

www.AMITX.com

NOT AVAILABLE
ONLINE

Business Classifieds

LESS THAN A PENNY: You can run a business classified in The Current and reach all of Shadow Creek Ranch for less than a penny per home. Call 512-263-9181 for details.

Classified Ads

Personal classifieds (one time sell items, such as a used bike...) run at no charge to Shadow Creek Ranch residents, limit 30 words, please e-mail shadowcreekbranch@peelinc.com.

SHADOW CREEK RANCH



**Airport
Transfer**
713-339-4088
executransport@gmail.com
Towncar transfers to and from IAH and Hobby

John LeBlanc *OBJECTIVE: Personal Service*
713.436.4707 www.LeBlancInsuranceAgency.com
jleblanc1@farmersagent.com 11711 Shadow Creek Pkwy, #125

Always
Working



Personal & Business Insurance

SHADOW CREEK RANCH

Brazoria County Municipal Utility District No. 26

Park Plan:

Brazoria County Municipal Utility District No. 26 and Brazoria-Fort Bend County Municipal Utility District No. 1, otherwise known as the MUDs, are in the Shadow Creek Ranch Master Planned Community in Pearland. The MUDs, working with the City of Pearland, have developed a master plan for the Shadow Creek Ranch Regional Sports Park (Park) to be built at the intersection of Shadow Creek Ranch Parkway and Kingsley Drive. The MUDs and the City want to work together to build this Park sooner than originally planned.

The MUDs are giving their residents the chance to decide whether they are for or against the issuance of park bonds to start designing the first phase of the Park in 2011, which is estimated to cost about \$12 million. The MUDs would issue bonds to build the first phase of the Park and the City will issue City bonds to pay for the future phases of the Park. Both MUDs can issue the bonds in 2011 **without a tax rate increase**. If the MUDs get approval to proceed, the MUDs will work with the City to make the Park become a reality sooner than originally planned.

For more information, please look for a brochure that will be included with your next water bill (to be mailed by the City on October 1st). We are also coordinating with the homeowners' association to hold a meeting in the community to discuss the Park matter with residents and to answer any questions. This meeting is scheduled for Tuesday, October 12th, at 7:00 p.m., at Mary Burks Marek Elementary School, 1947 Kirby Drive.

General Information:

As a reminder, the City of Pearland operates our water and sewer system and provides garbage collection services. If you have any questions about your service, please call the City of Pearland at (281) 652-1603.

The District generally meets every first Tuesday at 11:00 a.m. at the offices of Allen Boone Humphries Robinson LLP, 3200 Southwest Freeway, Suite 2600, Houston, Texas 77027. Agendas for each meeting are posted at the Emerald Village Recreation Center, 11814 N. Clear Lake Loop, Pearland, Texas 77584, and at the Brazoria County Courthouse at least 72 hours before every meeting, and the Board of Directors invites all members of the public to attend its meetings. Please contact (713) 860-6436 if you need confirmation of a Board meeting.

When You're Ready to Sell
Call The Experts at the Front Door of YOUR Community!



Cathy Spacek

832-643-7768

cathy@cathyspacek.com

Top Producer &
Resale Specialist

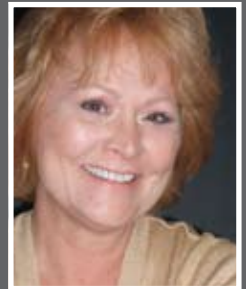
★ ★ Platinum
2005 2006 Producer

The Original Shadow Creek Ranch Realtors
Specializing in Your Community

Maximum Exposure of Your Listing
*Located in the SCR Visitors Center, and Welcoming
More Walkin Buyers Than Any Other
Real Estate Company*

**Even More Exposure with Our Exclusive
Live Online Chat**

*Reaching Out to Buyers Worldwide...
24 Hours a Day, 7 Days a Week*



Ricki Stockwell

713-306-3773

redrock811@aol.com

SCR Top Producer

Platinum ★ ★ ★
Producer 2004 2005 2006
★ ★ ★
2007 2008 2009

SHADOW CREEK RANCH

YARD OF THE MONTH WINNERS!



*The Molina Family, The Busquet Family
& The Hersh Family
Submitted By Chalmette Ray*

Congrats Neighbors!



\$5.00 OFF

16" OR LARGER COOKIE CAKE

Coupon not valid with any other offer and void if copied or reproduced. Please present coupon when ordering. Valid at participating Houston area locations only.

Expires 12/31/2010
© 2010 Cookie Associates, Ltd

**GREAT AMERICAN
COOKIES®**

**GREAT AMERICAN
COOKIES®**

**HOME OF THE
ORIGINAL COOKIE CAKE**

FRESH BAKED...PERFECT OF ANY OCCASION...READY IN JUST 5 MINUTES!

WWW.GREATAMERICANCOOKIES.COM



SHADOW CREEK RANCH

NATIONAL NIGHT OUT

Tuesday, October 5th
6 pm to 9 pm

Give Neighborhood Crime and Drugs a Going Away Party
Grab a Snack, Put on a Smile, Lock your Doors and Go Outside
to Meet your Neighbors!

Join America in a United Stand Against Crime
Lights on Mean Lights Out for Crime

ENCLAVE LAKES ESTATES NEWS

Greetings Residents,

Some of you may have noticed some increase in activity in neighborhood. A new development is being proposed on the North West Corner of the Shadow Creek Ranch Development. It's called The Reserve at Shadow Creek Ranch www.thereserveatscr.com and is located on Discovery Bay at Business Center Blvd. It will be comprised of additional hospital space, restaurants, anchor stores, a hotel and other retail and living spaces. Check out the website.

Travis deBenedetto - dageaux@sbcglobal.net

SHADOW CREEK RANCH HOA'S HALLOWEEN PUMPKIN CARVING PARTY!!!

Come Out & Show Off Your
Pumpkin Carving Skills At
DIAMOND BAY WATERPARK
2034 Trinity Bay Drive (Parking Lot)
On Thursday, October 21st, 2010
From 6:00 p.m. - 8:00 p.m.

**All ages welcomed, Halloween costumes optional, but please
bring your own pumpkin & carving tools**
Prizes, drinks & sweets will be provided for the Kids
We Look forward to seeing you there!!!

For further information
& volunteering,
please contact:

Bobbie Lopez-
Shadow Creek Onsite-Mgr.
blopez@amitx.com



Is your fireplace ready for *Winter*?

Gas Fireplace TUNE-UP

Call now to
beat the rush!

Schedule your gas fireplace
tune-up and safety check
today! Fireplace manufacturers
recommend that gas fireplaces
be serviced every year to
insure safe operation.

\$10 OFF

**Fireplace
Tune-UP**

Expires 10/31/10
Cannot be combined
with any other offer.

Present ad for discount
Or use code: TUNE01

PERFECTION is your source for:

- Fireplace TUNE-UPS, Parts and Repair
- Fireplace Gas Logs & Glass Doors
- Replacement Chimney Chase Tops



NFI Certified

Perfection
Fireplaces • Insulation • Sound Control

Houston's premier fireplace
company since 1979.

6742 N. Eldridge
(Btwn W. Little York & FM 529)

SHOWROOM OPEN
M-F 8AM - 5PM

713-937-4575

Visit us at www.PerfectionFireplace.com

TEXAS
Custom
PATIOS

Designed and built to look original to your home.

www.TexasCustomPatos.com



Patio Covers ■ Sunrooms
Screened Porches
Decorative Patios
Gazebos ■ Cabanas
Outdoor Kitchens ■ More

Let us create your new outdoor living space.
Visit our website to view our photo gallery,
send an online inquiry, or if you know what
you are looking for, give us a call today.

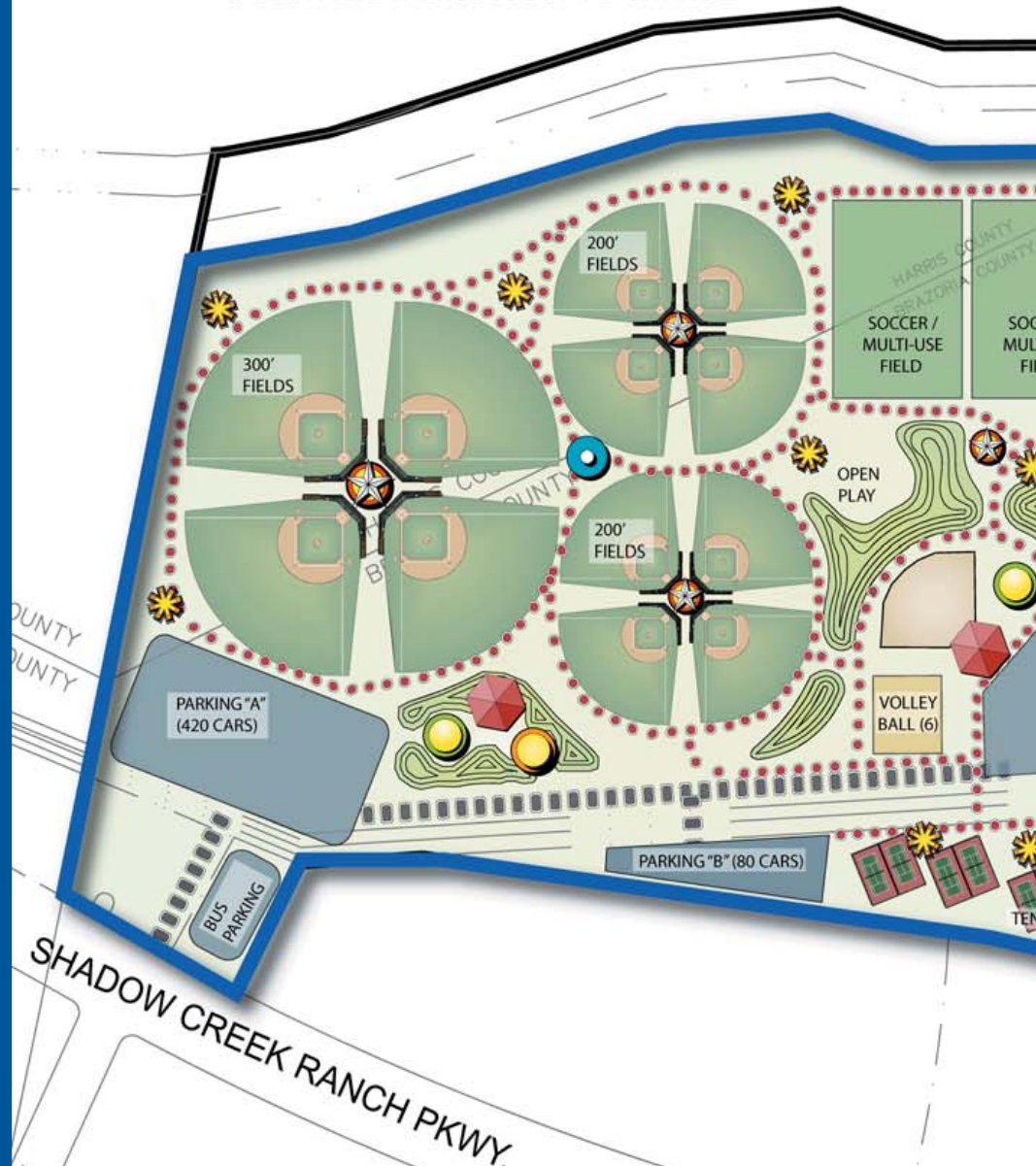


Call today!

(281) 342-1994



THIS DRAWING DEPICTS CONCEPTUAL
LANDSCAPE IMPROVEMENTS FOR
ILLUSTRATIVE PURPOSES ONLY. FINAL DESIGN
SOLUTIONS ARE SUBJECT TO CHANGE



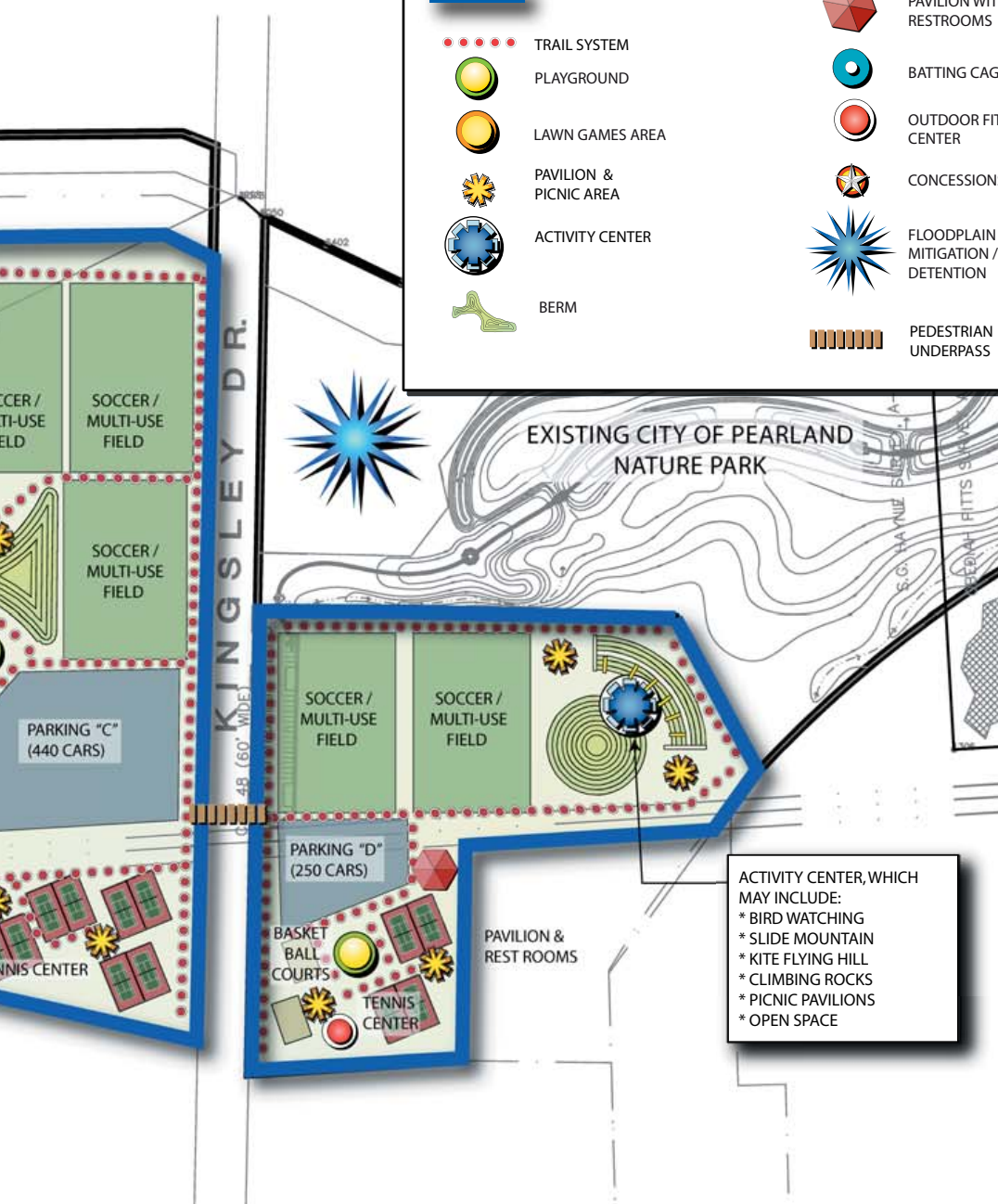
BRAZORIA-FORT BE

SHADOW CREEK R



SYMBOL LEGEND

	PARK BOUNDARY LINE		PAVILION WITH RESTROOMS
	TRAIL SYSTEM		BATTING CAGES
	PLAYGROUND		OUTDOOR FITNESS CENTER
	LAWN GAMES AREA		CONCESSIONS
	PAVILION & PICNIC AREA		FLOODPLAIN MITIGATION / DETENTION
	ACTIVITY CENTER		PEDESTRIAN UNDERPASS
	BERM		



ND COUNTY MUD #1

SHADOW CREEK RANCH SPORTS PARK

SHADOW CREEK RANCH



SHADOWCREEK LADIES

Pictured at August Bunco Game.



Fun times were had by all at this Bunco game held at the Wimbrush's home in August. If you are interested in becoming a sub or a regular player, please contact Avis at avis.wimbrush@invesco.com. The game is played once a month at the home of one of twelve regular players. There are several groups that have already started in our area, so maybe there is room for you!

When It
CAN'T WAIT
Until Morning ...



We Never Sleep.

Have you ever noticed that most injuries and illnesses strike in the middle of the night? If you need medical attention, but can't wait to see your doctor, come to Texas Emergency Care Center.

We're open 24 hours a day, seven days a week, 365 days a year. We are a free-standing emergency room, which means we provide all the same services as a traditional emergency room; we're just not physically attached to a hospital. And, we'll always work in collaboration with your primary care doctors to ensure they are informed about your emergency care.

**24-Hour Emergency Care
That's Close To Home.**



TEXAS
EMERGENCY CARE
CENTER™

READY OR NOT ... WE ARE.™



Accredited by the Joint Commission of Accreditation of Healthcare Organizations for our commitment to excellence.

txercare.com

All private insurance accepted.

PEARLAND

3115 Dixie Farm Road, Suite 107
FM 518 at Dixie Farm Road
281-648-9113

CYPRESS

17255 Spring Cypress Road, Suite A
Spring Cypress at Skinner Road
281-304-9113

GO GREEN DAY *Saturday October 23 from 9 a.m. to noon at the Southern Trails Community Center – 3300 Southern Trails Drive*

Keep Pearland Beautiful will be distributing recycling bins for the citizens of Southern Trails, Shadow Creek Ranch and citizens of Pearland. KPB has made arrangements with Waste Management to have curbside recycling bins available at the center for that day only for any residents who are unable to pick up a bin at City Hall during regular business hours. Residents will be required to show a city of Pearland water bill and are limited to one bin per family. The bins are intended for citizens that have never received a bin; residents may purchase a second or "overflow" bin for \$8. In addition, Keep Pearland Beautiful staff and volunteers will be on hand with information about recycling, events and programs offered by the City of Pearland. For more information call KPB at 281-652-1659 or email cowles@keeppearlandbeautiful.org.

The Current is the official publication of the Shadow Creek Ranch Maintenance Association. At no time will any source be allowed to use The Current's contents, or loan said contents, to others in anyway, shape or form, nor in any media, website, print, film, e-mail, electrostatic copy, fax, or etc. for the purpose of solicitation, commercial use, or any use for profit, political campaigns, or other self amplification, under penalty of law without written or expressed permission from the Shadow Creek Ranch Maintenance Association and Peel, Inc. The information in the newsletter is exclusively for the private use of Shadow Creek Ranch and Peel, Inc.

DISCLAIMER: Articles and ads in this newsletter express the opinions of their authors and do not necessarily reflect the opinions of Peel, Inc. or its employees. Peel, Inc. is not responsible for the accuracy of any facts stated in articles submitted by others. The publisher also assumes no responsibility for the advertising content with this publication. All warranties and representations made in the advertising content are solely that of the advertiser and any such claims regarding its content should be taken up with the advertiser.

* The publisher assumes no liability with regard to its advertisers for misprints or failure to place advertising in this publication except for the actual cost of such advertising.

* Although every effort is taken to avoid mistakes and/or misprints, the publisher assumes no responsibility for any errors of information or typographical mistakes, except as limited to the cost of advertising as stated above or in the case of misinformation, a printed retraction/correction.

* Under no circumstances shall the publisher be held liable for incidental or consequential damages, inconvenience, loss of business or services, or any other liabilities from failure to publish, or from failure to publish in a timely manner, except as limited to liabilities stated above.

Bashans Painting & Home Repair

**Commercial/Residential
Free Estimates**

281-347-6702



281-731-3383 cell



- Interior & Exterior Painting
- Hardi Plank Installation
- Wood Replacement
- Sheetrock Repair
- Interior Carpentry
- Cabinet Painting
- Wallpaper Removal and Texturizing
- Pressure Washing
- Fence Repair/Replacement
- Garage Floor Epoxy
- Custom Staining
- Roofing
- Gutter Repair/Replacement
- Faux Painting

References Available • Fully Insured

NO PAYMENT UNTIL COMPLETION

bashanspainting@earthlink.net



149TH Judicial
District Court
Brazoria County
Democrat

Elect
FAYE GORDON
For JUDGE

Early Voting - October 18-22, 2010
General Election - November 2, 2010

www.fayegordon.com

pol. ad. paid for by Terry D. Gordon, Treasurer,
13 N. Cay Ct., Angleton, Texas 77515, Tel: 979.849.3330

SHADOW CREEK RANCH

Councilman's Corner

It is hard to believe that it is already October. This month I want to draw your attention to several items that directly affect us here in Shadow Creek Ranch.

Shadow Creek Parkway Construction

In late August, the Texas Department of Transportation began a project to improve and expand Shadow Creek Parkway. The work includes major improvements to the drainage system and will widen the pavement to a four lane boulevard with raised medians, install signalized intersections at Trinity Bay Drive, Reflection Bay Drive and Business Center Drive and upgrade signals at FM 521, Kingsley Drive and Kirby Drive. The project is expected to take 18 months. While TXDOT will attempt to minimize the delays, due to the size and scope of the project it is inevitable that this project will cause residents some headaches. The City will be in constant communication with TXDOT and will keep residents updated on the status of the project.

National Night Out

National Night Out is the nation's night out against crime. This year, Texas residents will celebrate the 27th National Night Out on Tuesday, October 5th, 2010. Every year Pearland residents come out by the hundreds to join their neighbors at neighborhood block

parties all across the city. Last year I had the opportunity to visit eight parties in SCR. Send me an email if you would like me to stop by your block party this year.

Park Bond Vote

As you know the City currently has no park facilities on the west side of SH 288. While voters approved bonds in 2007 to build a park in SCR, economic conditions will delay the project. Brazoria MUD 26 and Brazoria/Fort Bend MUD 1 have voted to proceed with an election on November 2 to obtain voter approval of a proposition to issue bonds for construction of Shadow Creek Ranch Regional Sports Park (SCR Sports Park). The passage of this proposition will allow the Park project to become a reality earlier than if the City has to act alone. The Park may include open spaces, greenbelts, native habitat, paths, sidewalks, walking trails, fitness trail equipment, parks (including outdoor playground equipment, picnic tables, benches, barbeque grills, fire pits, fireplaces, open-air pavilions/gazebos, open-air amphitheaters, concession stands, etc.), pedestrian bridges and underpasses, ball fields, landscaping, amenity lakes (water features, docks, piers, overlooks), lighting, parking, and landscaping. The MUDs have determined that they are able to issue

(Continued on Page 11)

Get on the Best Sellers List!

with 

Patty McCracken



RE/MAX PEARLAND
Each office is independently owned and operated.

281-686-9301

REALTOR

Email: pattymccrackensells@gmail.com



FOR JUDGE DORA BONNER
COUNTY COURT AT LAW #3

979.265.1770

Experience Counts!

EARLY VOTING
OCTOBER 18-29
ELECTION DAY
NOVEMBER 2

EARLY VOTING LOCATIONS

ANGLETON MAIN: East Annex (Old Wal-Mart Building) 1524 E. Mulberry, Room 144	MANVEL BRANCH: Courthouse North Annex 7313 Corporate Dr.
ALVIN BRANCH: Alvin Library 105 S. Gordon	EAST PEARLAND BRANCH: Justice Of The Peace, Pct. 3 Pl. 2 Courtroom 2436 S. Grand Blvd.
BRAZORIA BRANCH: Precinct 4 County Barn 1001 Market St.	WEST PEARLAND BRANCH: Westside Event Center 2150 Countryplace Pkwy.
CLUTE/LAKE JACKSON BRANCH: Brazosport College 500 College Drive	SWEENEY BRANCH: Sweeny Community Center 205 W. Ashley Wilson Rd.
FREEPORT BRANCH: Freeport Library 410 Brazosport Blvd.	WEST COLUMBIA BRANCH: W Columbia City Hall 512 E. Brazos

WWW.DORABONNERFORJUDGE.COM

Political ad paid for by Dora Bonner in compliance with the voluntary limits of the Judicial Campaign Fairness Act.

SHADOW CREEK RANCH

Councilman's Corner - (Continued from Page 10)

bonds for parks without (1) increasing their current tax rates, (2) lengthening their debt maturity schedules, or (3) increasing the City tax rebate currently received by the MUDs pursuant to the Utility Agreements. Early voting runs from October 18 – October 29. Election Day is Tuesday, November 2.

I hope that this information is helpful. As always, please let me know if there are issues or concerns that I can assist you with.

**Scott Sherman, Mayor
Pro-Tem, City of Pearland**
sherman.scottj@gmail.com,
Facebook: "Councilmember
Scott Sherman"

SHADOW CREEK PARKWAY Construction Update

Starting late August 2010, the Texas Department of Transportation (TxDOT) will begin work on the improvement of FM2234 (Shadow Creek Parkway) between FM 521 (Alameda Road) and SH 288. This work includes major improvements to the drainage system and will widen the pavement to four lane boulevard with raised medians, install signalized intersections at Trinity Bay Drive, Reflection Bay Drive and Business Center Drive and upgrade signals at FM 521, Kingsley Drive and Kirby Drive.

Although the construction traffic control plan is designed to facilitate traffic in both directions during the 18 month construction period, it is advisable to seek alternative routes from SH288 to FM 521. Traffic using this route should expect major and continuous delays due to shifting traffic patterns and work areas. The work is being phased to begin at the east end of the roadway to the west.

Beginning next week, drivers should expect alternating lane closures for temporary traffic signal pole installations at FM 521, Kirby and Kingsley. The contractor will also begin working on the east bound temporary lanes from FM 521 to SH 288. Left turn lanes will temporarily be closed as the contractor approaches these areas.

TxDOT ask that all drivers planning on using this route during construction exercise extreme caution through the construction area as the speed limit has now been reduced to 45 mph. Work areas will be constantly changing, paving surfaces may be rough or uneven, with a temporary shoulder drop-off, temporary lanes will be narrow, there will be large moving equipment and personnel in close proximity to the travel lanes and traffic direction signage will be constantly changing.

For current construction updates, please visit www.cityofpearland.com/projects.

Electricity is **ON SALE** at StarTex Power!



Alan "Petrodamus" Lammey, host of 'Energy Week', can be heard every Sunday on 1070 KNTH in Houston.

I'm Texas Energy Analyst, Alan Lammey. In case you didn't know, electricity rates are currently at lows not seen in years, which means that NOW is the time to lock in a very low electricity rate with the provider that I highly recommend to all my radio show listeners: StarTex Power. StarTex Power is local and reputable, with some of the most competitive rates available in all of Texas. You can switch right online at www.StarTexPower.com

Sign Up Today Online: www.StarTexPower.com or call 866-917-8271

PLEASE USE "NEIGHBORHOOD NEWSLETTER" as your referral!



PUCT #10089

*"Highest in Residential Customer Satisfaction
with Retail Electric Service"*
... J.D. Power and Associates



StarTex Power received the highest numerical score among residential electric service providers in Texas in the proprietary J.D. Power and Associates 2009 Texas Residential Retail Electric service Satisfaction Study™. Study based on responses from 6,890 consumers measuring 15 providers and measures opinions of consumers with their electric service provider. Proprietary study results are based on experiences and perceptions of consumers surveyed between October 2008 and June 2009. Your experiences may vary. Visit jdpower.com.

Peel, Inc.

311 Ranch Road 620 S. Ste 200
Lakeway, TX 78734-4775
www.PEELinc.com

PRSR STD
U.S. POSTAGE
PAID
PEEL, INC.

SCR



Pearland's
#1 Realtor!

**Sam
FERRERI**

PearlandSamTEAM.com

***Dream Big,
Live Life,
HIRE SAM!***

832-200-5656
SamF@Remax.net



Get on the **SOLD** Train!

SOLD! **SOLD!** **Sam
FERRERI
EXPRESS!**

PearlandSamTEAM.com

Get Yours SOLD!

RE/MAX Top Realty Each Office Independently Owned and Operated.

Direct Impressions & Marketing 713.545.1269