

# THE Current

## SHADOW CREEK RANCH

November 2010

Official Publication of the Shadow Creek Ranch

Volume 2, Issue II

### *Recycle Center* **Changes Hours of Operation**

Changes in Hours of Operation: Effective October 18, 2010 the hours at the Stella Roberts Recycling Center will be changed. The Center will be open Monday-Friday 12pm-5pm and Saturdays 9-1pm.

Also effective October 18, 2010, the Recycling Center will be accepting Household Hazardous Materials and Electronics on Wednesday-Friday from 12:00 pm to 5:00 pm and Saturday from 9:00 am to 1:00 pm.

#### **As a reminder, here is a list of the items the Center accepts:**

Clear and colored number 1 & number 2 plastic bottles, ( i.e. soft drink and milk bottles), including tops and plastic numbers 3, 4, 5 & 7. Please no plastic grocery bags or packaging materials such as Styrofoam peanuts.

Newspaper, white office/copy paper, computer bar paper, junk mail/magazines, phone books, cardboard and bound books.

Colored and clear glass.

Aluminum cans, steel cans, steel lids, scrap metal and large appliances.

In January 2009, the Stella Roberts Recycling Center began collecting a fee from non-residents of \$50 per 100 lbs for Household Hazardous Waste and \$20 per 100 lbs for electronics.

Residents include citizens of Pearland, Brazoria County and the City of Friendswood for Hazardous materials disposal. Friendswood residents require a voucher for electronics disposal.

Non-resident vouchers must be purchased at the Pearland Parks and Recreation Center located at 4141 Bailey Rd., Pearland, TX 77584. Credit cards are accepted for vouchers; office hours are 7:30a.m. to 5:30p.m. Monday through Friday and their phone number is 281-412-8900.

#### **Hazardous materials include:**

Flammables such as oil based paint, paint products and refinishers, oxidizers such as pool chemicals, corrosives such as acids and certain cleansers, batteries (including Alkaline), motor oil, filters and cooking oil, latex paint, antifreeze, computers, monitors, printers, printer cartridges, televisions and cell phones.

The Center is located at 5800 Magnolia, Pearland, TX, 77584 and the phone number is 281-489- 2795. For tips on recycling and how to reduce junk mail, please visit our website at [www.keeppearlandbeautiful.org](http://www.keeppearlandbeautiful.org) or call the office at 281-652-1659.

### **Volunteer for the Board of Directors** *Application Required*

#### **Village of Reflection Bay**

The Board of Directors are accepting applications for an additional volunteer Board of Director for the Village of Reflection Bay. Please email a quick biography and why you would like to serve on the Board to [blopez@amitx.com](mailto:blopez@amitx.com). The deadline to submit your application is November 20, 2010.

#### **Village of Diamond Bay**

The Board of Directors are accepting applications for an additional volunteer Board of Director for the Village of Diamond Bay. Please email a quick biography and why you would like to serve on the Board to [blopez@amitx.com](mailto:blopez@amitx.com). The deadline to submit your application is November 20, 2010.

# IMPORTANT NUMBERS

## EMERGENCY NUMBERS

EMERGENCY .....	911
Fire.....	911
Ambulance.....	911
Sheriff – Non-Emergency.....	281-331-9000
Pearland Police Department .....	281-997-4100

## SCHOOLS

Mary Marek Elementary .....	281-245-3232
Laura Ingalls Wilder Elementary .....	281-245-3090
Manvel Junior High .....	281-331-1416
Alvin Senior High .....	281-331-8151
Manvel High School .....	281-245-2235
Alvin ISD Administration .....	281-338-1130
Alvin ISD Transportation .....	281-331-0960

## UTILITIES

Electricity - Reliant Energy.....	713-207-7777
Gas - Center Point .....	713-659-2111
Trash Removal - City of Pearland .....	281-652-1600

## OTHER NUMBERS

Pearland Post Office .....	281-485-2132
Poison Control.....	800-764-7661
Brazoria County Health Department .....	979-864-1484
Animal Control.....	281-756-2265

## CITY

Pearland City Hall.....	281-652-1600
Pearland Utility Billing - Water Dept. ....	281-652-1603
Pearland Animal Control.....	281-652-1970
Pearland Police Dept - Non-Emergency .....	281-652-1100
Pearland Public Works.....	281-652-1900

## NEWSLETTER

Articles .....	shadowcreekbranch@peelinc.com
Publisher	
Peel, Inc. ....	1-888-687-6444
Advertising .....	1-888-687-6444

# MGMT COMPANY

## ASSOCIATION MANAGEMENT, INC.

Community Manager	
Maria Southall-Shaw.....	713-332-4675
On-Site Manager	
Bobbie Lopez.....	832-436-5215
On-Site Manager	
Vacant.....	
Service Specialist	
Erin Reina .....	713-332-4685
Property Maintenance	
Mark Simien.....	832-276-2488

[www.AMITX.com](http://www.AMITX.com)

# NOT AVAILABLE ONLINE

## Business Classifieds

**LESS THAN A PENNY:** You can run a business classified in The Current and reach all of Shadow Creek Ranch for less than a penny per home. Call 512-263-9181 for details.

## Personal Classifieds

**FOR SALE:** Gently Used Nursery Furniture--\$575.00. Set includes: Simmons Cherrywood finish convertible crib, changing table with 5-drawer storage, and bookcase with storage. Call 713-927-2366.

**FOR SALE:** Mitsubishi WS-55413 55" Projection Screen HDTV only \$300. Great condition. Please call James 409-739-6470.

**FOR SALE:** Mitsubishi WS-48315 48" Projection Screen HDTV only \$250. Great condition. Please call James 409-739-6470.

## Classified Ads

**Personal classifieds** (one time sell items, such as a used bike...) run at no charge to Shadow Creek Ranch residents, limit 30 words, please e-mail [shadowcreekbranch@peelinc.com](mailto:shadowcreekbranch@peelinc.com).



FARMERS

AUTO - HOME - WIND - FLOOD - LIFE

This holiday season, give "peace of mind" to your family & loved ones. Life Insurance.

"Helping you protect what matters most".

Viet Nguyen - Shadow Creek Ranch Resident  
9330 Broadway St - Ste 326, Pearland TX 77584



(281) 741-7331 :: [www.farmersagent.com/vnguyen4](http://www.farmersagent.com/vnguyen4)

# SHADOW CREEK RANCH

## ATTENTION ALL PET OWNERS!!!

We received an email this past weekend from one of our Shadow Creek Ranch Section Representatives about several incidents that have taken place in the community regarding your pets. According to our source, "it appears that an escape artist comes in occasionally from the lake access pathway and stews into your garbage". We would like to ask all SCR-Section Reps. to advise their neighbors to keep their animals secured at night and to follow all Garbage Pick-Up schedules in order to prevent any harm to your pets. As our source stated, we do not have control over animals coming from outside SCR, but perhaps you could take the necessary steps to keep your pet safe!!!

Please remember regulations have been adopted requiring pet owners to keep on a leash & clean up after their pet(s) when walking outside of their own yard. Failure to do so is a potential health hazard, and is a discourtesy to the neighbors.

### Garbage Pick- Up Schedule:

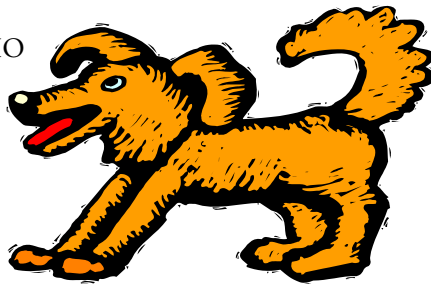
Wednesday & Saturday' is pickup day and Sat. is pick-up day for heavy trash.

Trash service is not included in HOA fees, HO must contact City of Pearland to set up trash service 281-652-1603.

**Animal Control:** Ph: 281-652-1970

*Thank You!*

**Bobbie Lopez- SCR HOA Onsite Mgr.**  
[blopez@amitx.com](mailto:blopez@amitx.com)



## ATTENTION RESIDENTS

Please remember to update your security system permit with the Pearland police department. The permits used to last for duration of your home ownership period, but now have to be renewed annually. The initial cost is \$15 and under certain circumstances the \$15 can be rolled over into the next year. Call me, Chalmette Ray at 713-591-5922 or email [chalmetteray@yahoo.com](mailto:chalmetteray@yahoo.com) with any questions.

## STREET LIGHTS OUT?

REPORT THE 6 DIGITS  
ON THE POLE TO  
[WWW.CENTERPOINT.COM](http://WWW.CENTERPOINT.COM)

***When You're Ready to Sell***  
***Call The Experts at the Front Door of YOUR Community!***

**The Original Shadow Creek Ranch Realtors**  
*Specializing in Your Community*

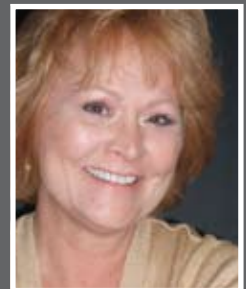
**Maximum Exposure of Your Listing**  
*Located in the SCR Visitors Center, and Welcoming  
More Walkin Buyers Than Any Other  
Real Estate Company*

**Even More Exposure with Our Exclusive  
Live Online Chat**  
*Reaching Out to Buyers Worldwide...  
24 Hours a Day, 7 Days a Week*



**Cathy Spacek**  
**832-643-7768**  
[cathy@cathyspacek.com](mailto:cathy@cathyspacek.com)  
Top Producer &  
Resale Specialist

★ ★ *Platinum*  
2005 2006 *Producer*

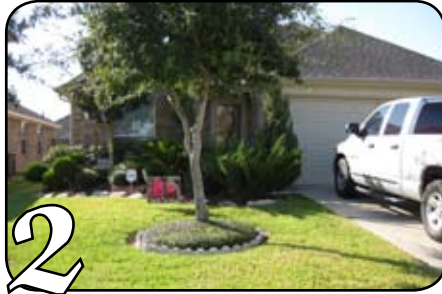


**Ricki Stockwell**  
**713-306-3773**  
[redrock811@aol.com](mailto:redrock811@aol.com)  
SCR Top Producer

*Platinum* ★ ★ ★  
*Producer* 2004 2005 2006  
★ ★ ★  
2007 2008 2009

# SHADOW CREEK RANCH

## YARD OF THE MONTH WINNERS!



1. The Calderon Family,
2. The Tyler Family,
3. The Lucher Family, &
4. The Lillie Family

*Congratulations  
Neighbors!*



When It's  
**TRULY AN  
EMERGENCY ...**

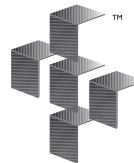


### We Provide Expert Care STAT!

Did you know that in many hospital emergency rooms, you could spend up to 10 hours in the waiting room while your condition possibly worsens? If you are experiencing a true medical emergency, minutes can be critical. That's why it's important to see an expert as quickly as possible.

At Texas Emergency Care Center, you will always be seen by a physician who is Board Certified in Emergency Medicine. What's more, the average wait time is less than 20 minutes, depending on the severity of patients being treated.

**24-Hour Emergency Care  
That's Close To Home.**



T E X A S  
**EMERGENCY CARE**  
C E N T E R™

READY OR NOT ... WE ARE.™



Accredited by the Joint Commission of  
Accreditation of Healthcare Organizations  
for our commitment to excellence.

**txercare.com**

All private insurance accepted.

#### PEARLAND

3115 Dixie Farm Road, Suite 107  
FM 518 at Dixie Farm Road  
**281-648-9113**

#### CYPRESS

17255 Spring Cypress Road, Suite A  
Spring Cypress at Skinner Road  
**281-304-9113**

A Licensed, Free-Standing  
Emergency Medical Care Facility.



# SHADOW CREEK RANCH

## BRAZORIA COUNTY MUNICIPAL UTILITY DISTRICT NO. 26

On September 7, 2010, the Board of Directors of the District voted unanimously to levy a 2010 tax rate of \$0.71 per \$100 assessed valuation, which was the same rate levied for 2009. You should receive your 2010 tax bill soon. As a reminder, taxes are due by January 31, 2011. If you do not pay your taxes by that date, you will be subject to mandatory penalties and interest. If you have any questions regarding your tax bill, please call our tax assessor/collector, Mr. Tommy Lee, at (281) 482-0216 ext. 26. For our taxpayers' convenience, Mr. Lee accepts credit cards for payment of tax bills, with payment of a small service fee.

As a reminder, the City of Pearland operates our water and sewer system and provides garbage collection services. If you have any questions about your service, please call the City of Pearland at (281) 652-1603.

The District generally meets every first Tuesday at 11:00 a.m. at the offices of Allen Boone Humphries Robinson LLP, 3200 Southwest Freeway, Suite 2600, Houston, Texas 77027. Agendas for each meeting are posted at the Emerald Village Recreation Center, 11814 N. Clear Lake Loop, Pearland, Texas 77584, and at the Brazoria County Courthouse at least 72 hours before every meeting, and the

Board of Directors invites all members of the public to attend its meetings. Please contact (713) 860-6436 if you need confirmation of a Board meeting.

### *Shadow Creek Ranch Stork Report*

Congratulations!

Let us help celebrate...

email info on the arrival

of your little one to

[shadowcreekranch@peelinc.com](mailto:shadowcreekranch@peelinc.com).

*Get on the Best Sellers List!*

with 

*Patty  
McCracken*



**281-686-9301**



Email: [pattymccrackensells@gmail.com](mailto:pattymccrackensells@gmail.com)

### Affordable Shade Patio Covers



We specialize in custom built patio covers, decorative & stamped concrete, cedar & treated pine shade arbors, insulated aluminum patio covers & arbors.



*Creating Comfort for Outdoor Living...  
with Affordable Shade Patio Covers!*



Visit our galleries to view hundreds of photographs of finished projects...from very happy customers.

**AffordableShade.com**  
**713-574-4969**

# SHADOW CREEK RANCH

## Texas Hold'em POKER CLUB

The Shadow Creek Ranch Texas Hold'em Poker Club meets the second Saturday of each month at 7pm. We are a casual group, friendly, and beginners are always welcome. We usually have between sixteen and twenty-five participants, and the host house changes from month to month.

If you would like to drop by, call Pete W. at 281-381-4110 for more details, or email Louise at [Lwessner1@comcast.net](mailto:Lwessner1@comcast.net) to get the monthly email invitation. Because of size constraints, you must live in Shadow Creek Ranch to participate.

The buy-in is \$10 per game, and all monies are paid out as cash prizes to top finishers. Points are also awarded both for knocking people from the tournament and for playing -- the higher your finish the more points accumulated. At year-end the top ten people on the points list qualify for the Top 10 Final Table. The host house provides snacks. You are welcome to bring your own beverage of choice.

*Submitted by Peter Wessner*

*Hope to see  
ya there!*



OUR STAND  
IT'S TIME THERE WAS A  
**SEMI-ANNUAL SALE**  
FOR SAFE DRIVERS LIKE YOU.



### YOUR CHOICE AUTO™

Safe Driving Bonus®. Get up to 5% toward your renewal bill for every 6 months of good driving, on top of any discounts.

(832) 895-6626

**RONALD D BREAU**  
11200 BROADWAY STE 2743  
PEARLAND TOWN CENTER  
[a059282@allstate.com](mailto:a059282@allstate.com)



Feature is optional and subject to terms, conditions and availability. Safe Driving Bonus won't apply after an accident. Patent pending. Allstate Fire and Casualty Insurance Company: Northbrook, IL. © 2009 Allstate Insurance Company

## Bashans Painting & Home Repair

Commercial/Residential  
Free Estimates

**281-347-6702**



**281-731-3383 cell**



- Interior & Exterior Painting
- Hardi Plank Installation
- Wood Replacement
- Sheetrock Repair
- Interior Carpentry
- Cabinet Painting
- Wallpaper Removal and Texturizing
- Pressure Washing
- Fence Repair/Replacement
- Garage Floor Epoxy
- Custom Staining
- Roofing
- Gutter Repair/Replacement
- Faux Painting

**References Available • Fully Insured**

**NO PAYMENT UNTIL COMPLETION**

[bashanspainting@earthlink.net](mailto:bashanspainting@earthlink.net)

# SHADOW CREEK RANCH

## BRIARWOOD SOUTH CELEBRATES NATIONAL NIGHT OUT

Briarwood South came out in full force to celebrate National Night Out. With the help of the new builder in our section, DR Horton supplied the barbeque while homeowners brought side dishes. Drinks were provided by our neighborhood bar, JP McNasty's. National Night Out is designed to decrease crime and heighten awareness in neighborhoods by fostering a sense of community. National Night Out in Briarwood South was so successful; homeowners have shown interest in coming together regularly throughout the year.

*Submitted by* **Whitnie Simmons**



## Electricity is **ON SALE** at StarTex Power!



Alan "Petrodamus" Lammey, host of 'Energy Week', can be heard every Sunday on 1070 KNTH in Houston.

I'm Texas Energy Analyst, Alan Lammey. In case you didn't know, electricity rates are currently at lows not seen in years, which means that NOW is the time to lock in a very low electricity rate with the provider that I highly recommend to all my radio show listeners: StarTex Power. StarTex Power is local and reputable, with some of the most competitive rates available in all of Texas. You can switch right online at [www.StarTexPower.com](http://www.StarTexPower.com)

**Sign Up Today Online: [www.StarTexPower.com](http://www.StarTexPower.com) or call 866-917-8271**  
**PLEASE USE "NEIGHBORHOOD NEWSLETTER" as your referral!**



PUCT #10089





# SHADOW CREEK RANCH

## CRESCENT LANDING NEIGHBORS CELEBRATE *NATIONAL NIGHT OUT 2010!*

A few of the neighbors came out in the Crescent Landing subdivision to meet and greet one another for National Night Out. This was the second year that we have celebrated with games and food and finding out what's happening in our area. The Pearland Police Department and the Constables came out and gave out information regarding crime in the area and also passed out goodies for the children. Brownie Troop #27260 stopped by to share in the camaraderie and to ask the Pearland Police Officer questions. They were going over safety information with their troop leader, so this event was perfect timing for them.

*Submitted by Avis Wimbush*

*(More Photos on Page 10)*



## Peel, Inc. COMMUNITY NEWSLETTERS

Blackhorse Ranch  
Bridgeland  
Coles Crossing  
Copperfield  
Cypress Mill  
Cypress Point  
Eagle Springs  
Enchanted Valley  
Fairfield  
Fairwood  
Harvest Bend The Village  
Lakemont  
Lakes of Fairhaven  
Lakes of Rosehill  
Lakes of Savannah  
Lakes on Eldridge  
Lakes on Eldridge North  
Lakewood Grove  
Legends Ranch

Longwood  
Oak Forest  
Riata Ranch  
Shadow Creek Ranch  
Silverlake  
Steeplechase  
Stone Gate  
Summerwood  
Village Creek  
Villages of NorthPointe  
Willowbridge  
Willowlake  
Willow Pointe  
Winchester Country  
Winchester Trails  
Windermere Lakes  
Woodedge Village  
Wortham Villages



**1-888-687-6444**  
**advertising@PEELinc.com**  
**www.PEELinc.com**

*Publishing Community Newsletters Since 1991*



## SILVER LEAF GLEN CELEBRATES NATIONAL NIGHT OUT

Thanks to everyone who came out for our National Night Out gathering in Silver Leaf Glen. We had a great turnout! Many of our neighbors stopped by to get to know each other, talk about all the things going on in Shadow Creek Ranch, and eat some delicious food. Thanks to everyone who contributed. We even had a special visit from our Constable, Fred Kanter. He stopped by to show his support for National Night Out and to talk about the services his organization provides. However, the highlight of the evening was when he let a few neighborhood kids climb up in his truck and sound the siren!

If you weren't able to make it, hopefully we will see you there next time. We were able to pick up lots of contact information from those that were there. So if you weren't there, please email me at SilverLeafGlen@gmail.com so that I can put you on the list.

*Submitted by Kathryn Ledet*

The Current is the official publication of the Shadow Creek Ranch Maintenance Association. At no time will any source be allowed to use The Current's contents, or loan said contents, to others in anyway, shape or form, nor in any media, website, print, film, e-mail, electrostatic copy, fax, or etc. for the purpose of solicitation, commercial use, or any use for profit, political campaigns, or other self amplification, under penalty of law without written or expressed permission from the Shadow Creek Ranch Maintenance Association and Peel, Inc. The information in the newsletter is exclusively for the private use of Shadow Creek Ranch and Peel, Inc.

**DISCLAIMER:** Articles and ads in this newsletter express the opinions of their authors and do not necessarily reflect the opinions of Peel, Inc. or its employees. Peel, Inc. is not responsible for the accuracy of any facts stated in articles submitted by others. The publisher also assumes no responsibility for the advertising content with this publication. All warranties and representations made in the advertising content are solely that of the advertiser and any such claims regarding its content should be taken up with the advertiser.

\* The publisher assumes no liability with regard to its advertisers for misprints or failure to place advertising in this publication except for the actual cost of such advertising.

\* Although every effort is taken to avoid mistakes and/or misprints, the publisher assumes no responsibility for any errors of information or typographical mistakes, except as limited to the cost of advertising as stated above or in the case of misinformation, a printed retraction/correction.

\* Under no circumstances shall the publisher be held liable for incidental or consequential damages, inconvenience, loss of business or services, or any other liabilities from failure to publish, or from failure to publish in a timely manner, except as limited to liabilities stated above.

TEXAS  
*Custom*  
**PATIOS**

Designed and built to look original to your home.

[www.TexasCustomPatios.com](http://www.TexasCustomPatios.com)



Patio Covers ■ Sunrooms  
Screened Porches  
Decorative Patios  
Gazebos ■ Cabanas  
Outdoor Kitchens ■ More

Let us create your new outdoor living space. Visit our website to view our photo gallery, send an online inquiry, or if you know what you are looking for, give us a call today.



Call today! (281) 342-1994

*Quality*  
**PRINTING COMPANY**

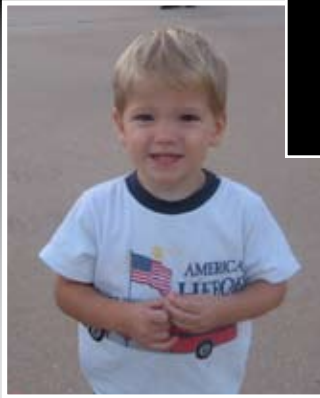


**BUSINESS FORMS  
NEWSLETTERS  
FLYERS  
ENVELOPES  
LETTERHEADS  
NCR SNAP APART  
FORMS  
RUBBER STAMPS  
BUSINESS CARDS**

*Solving all your printing needs.*  
**1-888-687-6444 ext. 24**

# SHADOW CREEK RANCH

## CRESCENT LANDING *Celebrates National Night Out*



*See Photos in Color Online at  
[www.Peelinc.com](http://www.Peelinc.com)!*

**John LeBlanc** *OBJECTIVE: Personal Service*  
713.436.4707 [www.LeBlancInsuranceAgency.com](http://www.LeBlancInsuranceAgency.com)  
[jleblanc1@farmersagent.com](mailto:jleblanc1@farmersagent.com) 11711 Shadow Creek Pkwy, #125

*Always  
Working*



Personal & Business Insurance

**Advertise  
Your Business Here  
888-687-6444**

# **WANTED**

— BY PEEL INC. —

ENERGETIC SALES REPRESENTATIVES



# **REWARD**



COMMISSION BASED INCOME

WANTED FOR WORKING FROM HOME,  
EARNING EXTRA INCOME, AND  
SELLING ADS IN YOUR NEWSLETTER

VISIT [WWW.PEELINC.COM/JOBS.PHP](http://WWW.PEELINC.COM/JOBS.PHP) FOR MORE INFORMATION

888-687-6444 | [WWW.PEELINC.COM](http://WWW.PEELINC.COM)



**Peel, Inc.**

311 Ranch Road 620 S. Ste 200  
Lakeway, TX 78734-4775  
www.PEELinc.com

PRSR STD  
U.S. POSTAGE  
PAID  
PEEL, INC.

SCR

# Get *Yours* SOLD!



## *Dream Big, Live Life, HIRE SAM!*

### 832-200-5656

SamF@Remax.net

RE/MAX Top Realty Each Office Independently Owned and Operated.

Direct Impressions *by* Marketing 713.545.1269