

THE Current

SHADOW CREEK RANCH

February 2011

Official Publication of the Shadow Creek Ranch

Volume 3, Issue 2

A Letter from Shadow Creek Ranch HOA On-Site Manager

We would like to Thank everyone who recycled their Christmas Tree this past month. AMI had another successful year in helping rebuild “Brazoria County” sand dunes. With that being said, we would like to encourage you to continue to Recycle and help our Environment!!!

 Lets Go Green!

FOR RECYCLING BINS AND MORE INFORMATION, YOU MAY CONTACT:

Stella Roberts Recycling Center 281-489-2795

Residential collection requires the use of disposable plastic or paper bags, is not to exceed a total weight of 50lbs., and is picked up twice each week. Waste must be placed curbside by 7 a.m., but no earlier than 6 p.m. on the previous day (Ord.181-8 Sec.2).

SCHEDULE OF PICKUP DAYS

Monday & Thursday
Tuesday & Friday
Wednesday & Saturday

- **Recycling Service-** Recycling containers can be obtained at City Hall, Utility Billing Dept., during regular business hours. (additional may be purchased for \$8.) Recyclables are picked up once a week. Acceptable items: Newspapers, glass bottles and jars, aluminum and steel cans, clear or translucent plastic milk, water and soda bottles, and #2 plastics.
- **Unacceptable Items include;** automobile, scrap iron, heavy metal, tires, boats, tree trunks, bricks, construction debris and items too heavy. Waste Management will not pick up oil, paint, pesticides, batteries, glass, mirrors or any material designated “Hazardous” be federal, state, or local authorities.
- **Garbage Pickup Holiday Schedule-** Waste Management observes six holidays a year: New Year’s, Memorial, Independence, Labor, Thanksgiving, and Christmas Days. If garbage collection falls on one of these days, service will resume on the next regularly scheduled day. If recycling or yard trimming pickup falls on one of these days, these services will skip that week and resume the following week.

Thank You, Bobbie Lopez

*Happy
Valentines Day
Shadow Creek Ranch!*

“According to the Greeting Card Association”, an estimated one billion valentine cards are sent each year, making Valentine’s Day the second largest card-sending holiday of the year. (An estimated 2.6 billion cards are sent for Christmas.)

DID YOU KNOW?

Approximately 85 percent of all valentines are purchased by women. In addition to the United States, Valentine’s Day is celebrated in Canada, Mexico, the United Kingdom, France, and Australia.

Valentine greetings were popular as far back as the Middle Ages (written Valentine’s didn’t begin to appear until after 1400), and the oldest known Valentine card is on display at the British Museum. The first commercial Valentine’s Day greeting cards produced in the U.S. were created in the 1840s by Esther A. Howland. Howland, known as the Mother of the Valentine, made elaborate creations with real lace, ribbons and colorful pictures known as “scrap.”

On behalf of Shadow Creek Ranch HOA we would like to congratulate our “Property Maintenance” - Mark Simien on his 4-year Anniversary with AMI.

Written by: Bobbie Lopez

IMPORTANT NUMBERS

EMERGENCY NUMBERS

EMERGENCY911
 Fire.....911
 Ambulance.....911
 Sheriff – Non-Emergency.....281-331-9000
 Pearland Police Department281-997-4100

SCHOOLS

Mary Marek Elementary281-245-3232
 Laura Ingalls Wilder Elementary281-245-3090
 Manvel Junior High281-331-1416
 Alvin Senior High281-331-8151
 Manvel High School281-245-2235
 Alvin ISD Administration281-338-1130
 Alvin ISD Transportation281-331-0960

UTILITIES

Electricity - Reliant Energy.....713-207-7777
 Gas - Center Point713-659-2111
 Trash Removal - City of Pearland281-652-1600

OTHER NUMBERS

Pearland Post Office281-485-2132
 Poison Control.....800-764-7661
 Brazoria County Health Department979-864-1484
 Animal Control.....281-756-2265
 Cable/Internet/Phone...COMCAST713-341-1000

CITY

Pearland City Hall.....281-652-1600
 Pearland Utility Billing - Water Dept.281-652-1603
 Pearland Animal Control.....281-652-1970
 Pearland Police Dept - Non-Emergency281-652-1100
 Pearland Public Works.....281-652-1900

NEWSLETTER

Articles.....shadowcreekrancho@peelinc.com
 Publisher
 Peel, Inc.1-888-687-6444
 Advertising.....1-888-687-6444

MGMT COMPANY

ASSOCIATION MANAGEMENT, INC.

Community Manager
 Maria Southall-Shaw.....713-332-4675
 On-Site Manager
 Bobbie Lopez.....832-436-5215
 Service Specialist
 Holly Blesener713-332-4681
 Service Specialist
 Erin Reina713-332-4685
 Property Maintenance
 Mark Simien.....832-276-2488

www.AMITX.com

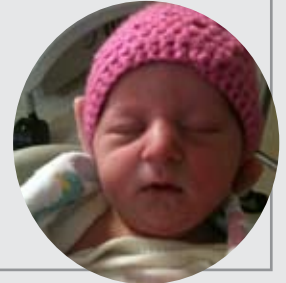
Stork Report in Shadow Creek Ranch

Baby Lucher

Born: November 27th, 2010
at 3:05 am.

7 lbs 5 oz and 20 inches long.

Proud Parents: Brandi &
Josh Lucher



Business Classifieds

LESS THAN A PENNY: You can run a business classified in The Current and reach all of Shadow Creek Ranch for less than a penny per home. Call 512-263-9181 for details.

Bashans Painting & Home Repair

Commercial/Residential
Free Estimates

281-347-6702



281-731-3383 cell



- Interior & Exterior Painting
- Hardi Plank Installation
- Wood Replacement
- Sheetrock Repair
- Interior Carpentry
- Cabinet Painting
- Wallpaper Removal and Texturizing
- Pressure Washing
- Fence Repair/Replacement
- Garage Floor Epoxy
- Custom Staining
- Roofing
- Gutter Repair/Replacement
- Faux Painting

References Available • Fully Insured
NO PAYMENT UNTIL COMPLETION
bashanspainting@earthlink.net

SHADOW CREEK RANCH

Attention: Shadow Creek Ranch Residents!!!

All Shadow Creek Ranch Pocket Parks needing repairs will be addressed in 2011. The Association has repaired the wooden boards in playgrounds starting in Village of Emerald Bay. We will continue to work throughout the year in repairing all necessary playgrounds that need attention in hopes to make your community a safer environment for our kids!!!

Also, we have installed new trash-cans in ten (10) new trails throughout the community. You will notice that the green trash-cans will help improve the amount of trash left behind by pedestrians.



Last, The Village of Emerald Bay has announced that they will be using Tru-Green Landscaping Company for the 2011 New Year.

If you have any questions or concerns regarding Pocket Playgrounds or landscaping, please feel free to notify Property Maintenance: Mark Simien- msimien@amitx.com

Brazoria County Municipal Utility District No. 26

MUD 26 will hold their February meeting on Wednesday, February 9th, at 7:00 p.m., at the Hilton Garden Inn, 12101 Shadow Creek Parkway, Pearland Texas. All Residents are welcome to attend.

As a reminder, the City of Pearland operates our water and sewer system and provides garbage collection services. If you have any questions about your service, please call the City of Pearland at (281) 652-1603.

Bridge Anyone?

Calling all Bridge players. Did you know there is a bridge group in Shadow Creek Ranch. We would like to invite anyone who is interested in learning the game, or who enjoys party bridge each third Friday of the month. If we have enough tables we can also play duplicate, or teach those who want to learn.

For more information email bfgiddens@hotmail.com or call 713-436-6314.

When You're Ready to Sell Call Your Community Experts!



Cathy Spacek

832-643-7768

cathy@cathyspacek.com

redrock811@aol.com

Top Producer &
Resale Specialist

★ ★ Platinum
2005 2006 Producer

★ ★
2009 2010

*"Puzzled? Let Me Help
You Put the Pieces Together!"*



Ricki Stockwell

713-306-3773

redrock811@aol.com

Top Producer
& Resale Specialist

Platinum ★ ★ ★
Producer 2004 2005 2006

★ ★ ★ ★
2007 2008 2009 2010

*"Measuring Success
One Family at a Time"*

Shadow Creek Ranch Top Producers

*with More SCR Homes Sold
than Any Other Realtors!*

and



**Partnering Expert Knowledge
With Aggressive Marketing Strategy
to Get Your Home Sold!**

SHADOW CREEK RANCH

Village Green Happenings & News

We had a well attended and festive Holiday Lights Sip 'n' Stroll on December 19th. I hope everyone who participated as hosts and as those sipping 'n' strolling had a great time. Thank you to Perry Homes for hosting a refreshment stop, as well. We will host another neighborhood event in the spring – if you would like to coordinate the event or if you have ideas, please let me know.

As those of you on the email list know, we have been working hard as a neighborhood to communicate the most up to date information about the AISD elementary school zoning plan. By the time this edition of the newsletter comes out, that plan will probably have been finalized. I'd like to thank everyone in our neighborhood who has voiced opinions, attended meetings, and been a positive advocate for our community. It's positive for each of us to be engaged in what happens in our community! Thank you to Scott Sherman for taking leadership in organizing questions for AISD representatives.

Also, there have been a few incidents of minor crime in our neighborhood. If you see anything suspicious, call the Pearland Police Department, and please email the neighborhood to let your neighbors know.

If you do not receive neighborhood emails, please contact me at thedaggetts2008@gmail.com to be added. Include your name(s), email address, and home address.

*See you around the neighborhood, Katie Daggett
Village Green Section Representative*

Neighbors in Enclave Lake Estates and all SCR Residents:

Preparing for Spring projects? As one of the first neighborhoods, we will see maintenance needs before other residents. As I was walking around my yard I noticed that several of the spindles on my iron fence were beginning to rust on the bottom. Some were even corroding badly. If you have an iron fence in your yard I recommend that you inspect it for rust. If you choose to remediate this situation yourself there are several ways to do it. My plan is to scrub off all of the rust with a stainless steel brush and fill in the bad spots where corrosion has occurred with a two part epoxy made for exterior metal applications. I plan to use Loctite 0.85 fl. oz. Marine Epoxy since that's what I have at my house. Once dried, you can use an exterior enamel paint to cover the epoxy and any areas where rust has occurred. It is a good idea to scrub the entire fence with steel wool and plan to put a fresh coat of paint on the entire fence for protection. Both the epoxy and paint can be found at almost any hardware store.

PROMOTE YOUR BUSINESS *in Style!*

- BUSINESS CARDS / BUSINESS CARD MAGNETS / MAGNETS
- POST-IT® NOTES / CUBES & MEMO PADS / DECALS
- BUMPER STICKERS / MEMBERSHIP CARDS & ID BADGES
- PERSONALIZED WRITING INSTRUMENTS / CALENDARS
- HEALTHCARE PROMOTIONS / DRINKWARE & KOOZIES®
- NEWSLETTERS / BOOKLETS / FLYERS
- ENVELOPES / LETTERHEADS / RUBBER STAMPS
- BUSINESS FORMS / AND MUCH MORE....

NEED AN ADVERTISING SPECIALITY ITEM?

1-888-687-6444 ext. 23

Quality
PRINTING COMPANY

Experience Matters
Doing business for
30+ years.



Homeowner 2011 Maintenance Assessments

Thank you for your 2011 Maintenance Assessments. If you haven't already paid your 2011 maintenance assessment, it is late. The invoices were sent out early December 2010 and payment was due January 31, 2011. If payment was received after January 31, 2011, a late fee of 18% per annum will be billed monthly in addition to all legal expenses.

Several homeowners have asked us if assessments are necessary and if there are repercussions if you don't pay – the answers to these questions are “yes” and “yes”! Your annual assessments are used to support the infrastructure in Shadow Creek Ranch. Physical items we maintain include landscaping, pools, clubhouse, tennis courts, playgrounds, pools, lakes, irrigation, and sidewalks. Additionally, the onsite staff coordinates the maintenance of these items including overseeing deed restriction enforcement.

The management company, AMI, maintains all bank accounts, generates billings, pays bills and coordinates all other administrative needs of our community. The Board of Directors also directs funds into long-term reserves each year for use on larger projects that will need replacement or be repaired in the future. Examples of reserved

projects include but are not limited to fences, playgrounds, pools, fountains, and sidewalks.

Bad debt associated with residents who did not pay their assessments or who suffered bankruptcy also plays a critical role in the budget. Our attorneys continue to monitor these accounts daily and failure to pay can and will lead to foreclosure and eviction.

If you were unable to pay your assessment in full by the January 31, 2010, please contact AMI immediately.

Thank you for caring about your community, Shadow Creek Ranch.

AMI Now Accepts Online Bill Payments With PayLease

Homeowners need to go to www.amitx.com and click on the “payment options” button on the home page. There is a tab for the PayLease website. Enter your account number and last name. PayLease will verify the account and log you in. Select “make payment” to make a single payment or “automatic payments” to set up an automatic debit each month. Standard processing takes 2-3 business days, ExpressPay process payments for the next business day deposits. PayLease also offers an over the phone payment option at 866-729.5327.

ALL MY SONS

MOVING & STORAGE



Local Moving Experts

- Furniture Quilt-Pad Wrapped at No Extra Charge
- Furniture Placed & Set-up in Your New Home
- Quality Service at Sensible Rates
- Professional Piano Movers
- Courteous & Professionally Trained Personnel
- We DO NOT Require All Drawes to be Emptied
- Complete Packing & Unpacking Services Offered

Low Storage Rates

- Modern Warehouse Facility
- Climate Controlled
- Sanitized Private Vaults
- Reliable In-Home Inventory
- Air Conditioned Storage Available

Long Distance

- Guaranteed Price & Service
- Direct Service to All Points in USA

Office/Industrial

- Corporate Relocation
- Record Retention
- International

Same Day Service
24 Hours, 7 Days a Week
Licensed & Insured
www.allmysons.com

For Free Friendly Estimates & Advice, Call:
832-226-5010

Customer Satisfaction is Our #1 Goal!
Let Our Family Move Yours!



MC 501473C • USDOT 1296282
TXDOT 6252035C

All My Sons Moving & Storage of Houston, Inc.
“Your Neighborhood Movers!”

Affordable Shade Patio Covers

We specialize in custom built patio covers, decorative & stamped concrete, cedar & treated pine shade arbors, insulated aluminum patio covers & arbors.



213-574-4969



*Creating Comfort for Outdoor Living...
with Affordable Shade Patio Covers!*



Visit our galleries to view hundreds of photographs of finished projects...from very happy customers.

AffordableShade.com

713-574-4969

SHADOW CREEK RANCH

YARD OF THE MONTH:

Congratulations Michael and Family-Meadow Trails East



Homeowners Tip of The Month

Submitted by Chalmette Ball

Last November there were not enough votes to support building a Sports Park near the Shadow Creek Ranch area. The ongoing details about this park have been provided by MUD 26. Beginning in February 2011 the SCR residents will have the opportunity to attend the MUD 26 meetings. The meetings will be held at more opportune times and other important issues will be discussed as well. Contact me at chalmetteray@yahoo.com or 713-591-5922 for more information about the MUD meetings coming up in 2011.

Classified Ads

Personal classifieds (one time sell items, such as a used bike...) run at no charge to Shadow Creek Ranch residents, limit 30 words, please e-mail shadowcreekranch@peelinc.com.

Business classifieds (offering a service or product line for profit) are \$50, limit 40 words, please contact Peel, Inc. Sales Office at 1-888-687-6444 or advertising@peelinc.com.

YOUR NEW OUTDOOR *Living Room*



PATIO COVERS
SCREENED PORCHES
SUNROOMS
ROOM ADDITIONS
OUTDOOR KITCHENS
GAZEBOS
AND MORE



facebook

TEXAS
Custom
PATIOS

281-342-1994

www.TexasCustomPatios.com

Designed and Built To Look Original To Your Home

*Dedicated to the Excellence of
Service & Professionalism*

Patty McCracken
ABR Platinum Club



RE/MAX Pearland
Hall of Fame

FREE Home
Market Analysis

10015 Broadway
Suite B
Pearland, Texas 77584
281-686-9301
pattymccracken.com



SHADOW CREEK RANCH

Pearland Police Department

NEIGHBORHOOD WATCH

According to the Pearland Police Department website, the Neighborhood Watch Program is organized to enable the police and the community to work together to make specific geographical areas more crime resistant to reduce crime. It is a citizen involvement, neighborhood and community-based effort, designed to help citizens and the police department in preventing primarily residential burglaries.

Shadow Creek Ranch HOA would like to encourage its residents to communicate with your local Police Officers in continuing to make Shadow Creek Ranch a safe place to live.

Pearland Police Department goes on to say that a Watch can be organized around any geographic area. Police departments across the country are learning that community participation in anti-crime programs is crucial. One of the most effective ways to promote citizen interaction with police is the sharing of information. Citizen groups determine specific needs or problems and then share this information with local police. The police then act on this information and report back to the group on their progress. This program also works when the police go to public groups and organizations and make them aware of specific criminal activities, or the needs of the police department.

HELPFUL TIPS:

- LOCK YOUR CAR
- At home or on the road, keep valuables out of plain sight
- Secure purses, computers, GPS systems, radar detectors, mp3 players, etc in the home or in the trunk
- Bags, briefcases or backpacks make tempting targets for car burglars; don't leave them in the car.
- Don't trust that window tint will keep your valuables hidden
- Citizens should call the police when they see any suspicious persons, activity or circumstance. Unfamiliar vehicles parked for extended periods of time or persons driving slowly through neighborhoods are incidents worth calling the police.

CONTACT INFORMATION:

Pearland Police Department at 281-652-1100.

Officer M. Pace 281-652-1185

Officer Z. Davis 281-652-1231



SELL US YOUR CAR.

WE BUY ALL KINDS OF CARS FROM PEOPLE JUST LIKE YOU.

We pay more because we care about our community and the people who, just like you, want to make the world just a little more fun and safe for the rest of us. Call, click, or come on down to our state-of-the-art facility located right here in Stafford. What are you waiting for?



TEXASDIRECTAUTO.COM

SHADOW CREEK RANCH

Texas Hold'em POKER CLUB

The Shadow Creek Ranch Texas Hold'em Poker Club meets the second Saturday of each month at 7pm. We are a casual group, friendly, and beginners are always welcome. We usually have between sixteen and twenty-five participants, and the host house changes from month to month.

If you would like to drop by, call Pete W. at 281-381-4110 for more details, or email Louise at Lwessner1@comcast.net to get the monthly email invitation. Because of size constraints, you must live in Shadow Creek Ranch to participate.

The buy-in is \$10 per game, and all monies are paid out as cash prizes to top finishers. Points are also awarded both for knocking people from the tournament and for playing -- the higher your finish the more points accumulated. At year-end the top ten people on the points list qualify for the Top 10 Final Table. The host house provides snacks. You are welcome to bring your own beverage of choice.

Submitted by Peter Wessner

*Hope to see
ya there!*



When It's
**TRULY AN
EMERGENCY ...**

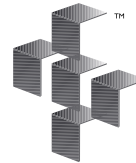


We Provide Expert Care STAT!

Did you know that in many hospital emergency rooms, you could spend up to 10 hours in the waiting room while your condition possibly worsens? If you are experiencing a true medical emergency, minutes can be critical. That's why it's important to see an expert as quickly as possible.

At Texas Emergency Care Center, you will always be seen by a physician who is Board Certified in Emergency Medicine. What's more, the average wait time is less than 20 minutes, depending on the severity of patients being treated.

**24-Hour Emergency Care
That's Close To Home.**



T E X A S
**EMERGENCY CARE
C E N T E R™**

READY OR NOT ... WE ARE.™



Accredited by the Joint Commission of
Accreditation of Healthcare Organizations
for our commitment to excellence.

A Licensed, Free-Standing
Emergency Medical Care Facility.

txercare.com
All private insurance accepted.

PEARLAND
3115 Dixie Farm Road, Suite 107
FM 518 at Dixie Farm Road
281-648-9113

CYPRESS
17255 Spring Cypress Road, Suite A
Spring Cypress at Skinner Road
281-304-9113

SHADOW CREEK RANCH

The Current is the official publication of the Shadow Creek Ranch Maintenance Association. At no time will any source be allowed to use The Current's contents, or loan said contents, to others in anyway, shape or form, nor in any media, website, print, film, e-mail, electrostatic copy, fax, or etc. for the purpose of solicitation, commercial use, or any use for profit, political campaigns, or other self amplification, under penalty of law without written or expressed permission from the Shadow Creek Ranch Maintenance Association and Peel, Inc. The information in the newsletter is exclusively for the private use of Shadow Creek Ranch and Peel, Inc.

DISCLAIMER: Articles and ads in this newsletter express the opinions of their authors and do not necessarily reflect the opinions of Peel, Inc. or its employees. Peel, Inc. is not responsible for the accuracy of any facts stated in articles submitted by others. The publisher also assumes no responsibility for the advertising content with this publication. All warranties and representations made in the advertising content are solely that of the advertiser and any such claims regarding its content should be taken up with the advertiser.

* The publisher assumes no liability with regard to its advertisers for misprints or failure to place advertising in this publication except for the actual cost of such advertising.

* Although every effort is taken to avoid mistakes and/or misprints, the publisher assumes no responsibility for any errors of information or typographical mistakes, except as limited to the cost of advertising as stated above or in the case of misinformation, a printed retraction/correction.

* Under no circumstances shall the publisher be held liable for incidental or consequential damages, inconvenience, loss of business or services, or any other liabilities from failure to publish, or from failure to publish in a timely manner, except as limited to liabilities stated above.

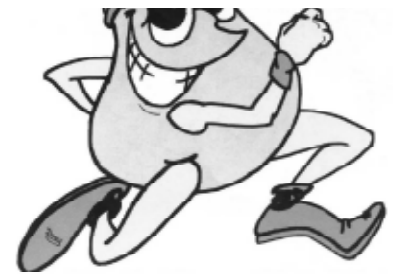
Pearland Fun Run

The Pearland Citizens Police Academy Alumni Association will hold its 7th Annual Pear Run 10k/5k/Walk on Saturday, May 7, 2011 at 7am on a certified course in Pearland's Independence Park. There will also be a free kids 1k fun run for children 9 years old and under.

The Pearland Citizens Police Academy Alumni Association (PCPAAA) is an IRS Section 501(c) non-profit organization and the Pearland Police serve as advisors to the group. All donations to the Pearland Citizens Police Academy Alumni Association are tax deductible.

For more information, contact us at info@pearrun.com.

*(Registration Form
can be found in last months
issue on www.peelinc.com)*



Electricity is **ON SALE** at StarTex Power!



Alan "Petrodamus" Lammey, host of 'Energy Week', can be heard every Sunday on 1070 KNTH in Houston.

I'm Texas Energy Analyst, Alan Lammey. In case you didn't know, electricity rates are currently at lows not seen in years, which means that NOW is the time to lock in a very low electricity rate with the provider that I highly recommend to all my radio show listeners: StarTex Power. StarTex Power is local and reputable, with some of the most competitive rates available in all of Texas. You can switch right online at www.StarTexPower.com

Sign Up Today Online: www.StarTexPower.com or call 866-917-8271

PLEASE USE "NEIGHBORHOOD NEWSLETTER" as your referral!



PUCT #10089



SHADOW CREEK RANCH

Personal Classifieds

WANTED Nanny & Housekeeper: (Chinese, Philippino or Vietnamese speaking preferred) for good family with young children in Shadow Creek Ranch. Please contact Hanh 713-818-4790 / tuonghanh4@yahoo.com.

FOR SALE: Gently Used Nursery Furniture - \$575. Set includes: Simmons Cherrywood finish convertible crib, changing table with 5-drawer storage, and bookcase with storage. Call 713-927-2366.

WANTED

BY PEEL INC.

ENERGETIC SALES REPRESENTATIVES

REWARD

COMMISSION BASED INCOME

WANTED FOR WORKING FROM HOME,
EARNING EXTRA INCOME, AND
SELLING ADS IN YOUR NEWSLETTER

VISIT WWW.PEELINC.COM/JOBS.PHP FOR MORE INFORMATION

888-687-6444 | WWW.PEELINC.COM

Pearland Parks & Recreation

Daddy Daughter Date Night

“An Enchanted Butterfly Garden”

Saturday, February 19, 2011

6pm-8pm, Bailey Campus (4717 Bailey Road)
\$40/couple, \$15 additional siblings, Ages 4-14

Don't miss the opportunity to make memories that will last a lifetime. Dinner and entertainment are included in the price of registration. Advance registration is required by February 16.

Space is limited...don't wait to sign up!

www.pearlandparks.com, (281) 412-8900

Ladies & Lil' Gents

Saturday, February 26, 2011

6pm-8pm, Bailey Campus (4717 Bailey Road)
\$40/couple, \$15 additional siblings, Ages 4-10

Saddle up for a stompin' good time! Come on down for some playing, dancing and good old western grub! Advance registration required by February 23. Space is limited...don't wait to sign up!

www.pearlandparks.com, (281) 412-8900

NOT AVAILABLE
ONLINE

A
BRAND
NEW
U



UHCL Pearland Campus NOW OPEN!

UHCL Pearland Campus is your local resource for junior, senior, and graduate-level courses in high-demand disciplines. And as we grow, so will our program offerings.



University
of Houston
Clear Lake
Pearland Campus

- Accounting
- Management
- Interdisciplinary Studies, EC-6
- Educational Management
- Psychology
- Behavioral Science
- Criminology
- Counseling

www.uhcl.edu/pearland

1200 Pearland Parkway, Pearland, Texas 77581
281-212-1690

Common Code Violations in The City of Pearland

**All violations concerning items with a registration number are investigated by the Police Department (i.e., cars, boats, campers, etc.)*

SEC.13-17 WEEDS AND OTHER VEGETATION

It shall be unlawful for any owner, tenant, lessee, agent or occupant of any premises to permit any weeds, grass or brush to grow above the height of twelve (12) inches upon any premises owned, leased, occupied, or controlled by such person, or upon the unpaved portion of any street right-of way abutting said property.

Ordinance No.1286 Junked / Abandon Vehicles

A junked vehicle, including a part of a junked vehicle, that is visible at any time of the year from a public place (street) or right-of way is detrimental to the safety and welfare of the general public, tends to reduce the value of private property, invites vandalism, creates a fire hazard, is an attractive nuisance creating a hazard to the health and safety of minors.

UNITED DEVELOPMENT CODE

TRASH & RUBBISH/OPEN STORAGE

Typical violations of this ordinance include accumulation of trash, wood debris, building and fencing materials, indoor furniture, appliances, tires, car parts, tree limbs and other related materials. Residents are asked to bring their properties to compliance by placing trash out on scheduled days and removing such items within a designated time frame. If the problem is not resolved, legal action could be taken in Municipal Court.

COMPLAINT LINE: Please call 281-652-1766 if you have a complaint about code enforcement issues such as health complaints, junk vehicles, vehicles parked in street, bandit signs, etc. Leave a detailed message and a phone number where you can be reached. The voice mails will be checked daily, and the necessary actions will be taken. Once your complaint is received one of our officers will investigate your complaint and will respond to you within 48 to 72 hours should you need an update.

Cigarette Litter Awareness Campaign

On February 5, 2011 at 8AM Keep Pearland Beautiful will be continuing the attack on cigarette litter. The "Don't Leave Your Butt Behind" cigarette litter awareness campaign will target five intersections or "transition points" in our city. Last year 28 volunteers picked up 16,000 butts in a 3 hour period; our goal is to create awareness of the problem, not to eliminate the "butts". Volunteers (13 yrs. & up) will again go out and pick-up cigarette butts at these designated intersections. The counting is made easy with the containers already marked by KPB board member Helen Beckman. There will be special gifts for the first 30 volunteers to arrive on Saturday, Feb. 5. Meet at the KPB office at 3523 Liberty Dr. Questions call 281-652-1659.

Alligators in Texas

ABOUT ALLIGATORS...

The Texas Parks and Wildlife Department offers the following information. Most Texans in "gator country" will live in close proximity to these native reptiles with no confrontations. However, there are occasions when certain alligators become "a nuisance" and must be handled by the proper authorities.

The current legal definition of a nuisance gator is "an alligator that is depredating (killing livestock or pets) or a threat to human health or safety" under definitions laid out in the Texas Administrative Code (Title 31, Part 2, Chapter 65, Section 65.352). The following information should help to determine if the observed alligator may pose a threat to you or your property. If, after reading the following, you determine that an alligator is "nuisance," please contact the Texas Parks and Wildlife Department law enforcement communications center in La Porte at 9281) 842-8100 or in Austin at (512) 389-4848.

IF YOU SEE AN ALLIGATOR...

If you hear an alligator hiss, it's a warning that you are too close.

If you have a close encounter with an alligator a few yards away, back away slowly.

Alligators are extremely quick and will defend themselves and their nest when a person gets too close to the nest, but she will quickly return to the nest after intruder left.

Alligators can run up to 35 miles per hour for short distances on land, they are not slow!!!

Alligators usually bask along banks of ponds or streams for extended periods of time.

If you walk near the water and an alligator comes straight towards you, especially if it comes out of water, it is definitely a nuisance alligator that needs to be reported to TPWD.

If you see an alligator while walking a pet make sure that your pet is on a leash and under your control.

If you see a large alligator in your favorite swimming hole or pond, do not swim with it.

If you see a nuisance alligator, consider why it is there. Did someone clean fish and throw the heads into a pond or river? If so, they created a potential alligator problem and could be breaking state regulations. Since October 1, 2003, it has been a Class C misdemeanor punishable by a fine of up to \$500.00 for anyone caught feeding an alligator.

REPORTING REQUIREMENTS

Send all reports to:
TPWD Alligator Program
10 Parks and Wildlife Dr.
Port Arthur, TX 77640



We hope you find this information of help. For more information about Alligators, please visit txgator.info@tpwd.state.tx.us. However, if you have any further concern contact Bobbie Lopez your On-Site Manager at 713-332-4680 or email blopez@amitx.com.



PEEL, INC.

308 Meadowlark St.
Lakeway, TX 78734-4717

PRSR STD
U.S. POSTAGE
PAID
PEEL, INC.

SCR

Get Yours SOLD!




Pearland's
#1 Realtor!

**Sam
FERRERI**

PearlandSamTEAM.com



Dream Big, Live Life, HIRE SAM!

832-200-5656

SamF@Remax.net

RE/MAX Top Realty Each Office Independently Owned and Operated.

Direct Impressions Marketing 713.545.1269