



The VOICE

A Newsletter for the
Residents of Teravista

Volume I, Issue I

March 2011

WELCOME TO THE VOICE

The Voice is a monthly newsletter mailed to all Teravista residents. Each newsletter will be filled with valuable information about the community, local area activities, school information, and more.

If you are involved with a school group, play group, scouts, sports team, social group, etc., and would like to submit an article for the newsletter, you can do so online at www.PEELinc.com, or you can email to teravista@peeilnc.com. Personal news (announcements, accolades/ honors/ celebrations, etc.) are also welcome as long as they are from area residents.

GO GREEN! Subscribe via Peelinc.com to have an email sent to you with a link to a PDF of the newsletter, or have an email sent to you instead of having a newsletter mailed to you!

LANDSCAPING WITH DEER RESISTANT PLANTS

Submitted by Jack Williams

Landscaping in Central Texas can be fun, but also quite challenging. The unique setting of Central Texas blends the urban city with the Hill Country. This mix gives the Austin landscape a look and feel unlike any other part of Texas.

With wildlife and people living together, it is common to see deer in neighborhoods all around Round Rock and Austin. The deer can really give headaches to the novice landscaper. When landscaping in our area, it is important to know the different types of shrubs and perennials you can use to make your yard beautiful and keep the deer from munching on your new plantings. Remember, the plants mentioned are usually deer resistant, but deer will eat almost any plant if hungry in extreme drought conditions.

Every landscape should have the right mix of evergreen shrubs and flowering perennials. This way, your garden doesn't look dead in the winter and will provide color in the spring, summer and fall. Here are a couple of plants that I have had success with.

Evergreen Shrubs:

- Silver Germander
- Pineapple Guava
- Dwarf Yaupon
- Cotoneaster
- Upright and Trailing Rosemary

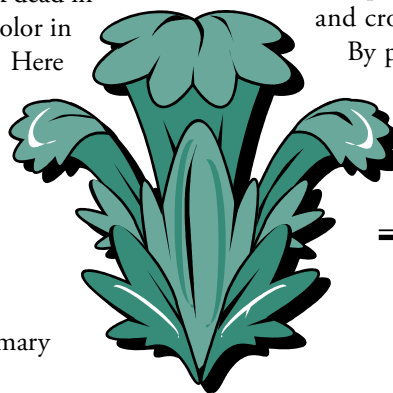
- Bicolor and African Iris
- Jerusalem Sage

Flowering Perennials:

- Salvia species (Several varieties and colors to choose from--I like 'Hot Lips', Mexican Bush Sage and Salvia Greggii)
- Indigo Spires
- 4 Nerve Daisy
- Copper Canyon Daisy
- Turk's Cap
- Bat Face Cuphea
- Yellow Bell

These shrubs and perennials will vary in height and texture, so be sure to plant in the right location. For example, you don't want to plant a Pineapple Guava in front of a window or an Upright Rosemary too close to a sidewalk--allow for adequate growth. If not, the plants will overwhelm the space and crowd your garden.

By planning ahead and before you begin landscaping, you will save valuable time, money AND keep deer from eating your plants!



*Best of luck and
happy gardening.*

IMPORTANT NUMBERS

EMERGENCY NUMBERS

EMERGENCY	911
Fire	911
Ambulance	911
Round Rock Police (Non Emergency)	512-218-5515
Georgetown Police (Non Emergency)	512-390-3510
Travis County Animal Control	512-972-6060
Round Rock Animal Control	512-218-5500
Georgetown Animal Control	512-930-3592

SCHOOLS

Round Rock ISD	512-464-5000
Teravista Elementary School	512-704-0500
Hopewell Middle School	512-464-5200
Stony Point High School	512-428-7000
Georgetown ISD	512-943-5000
Carver Elementary School	512-943-5070
Pickett Elementary School	512-943-5050
Tippit Middle School	512-943-5040
Georgetown High School	512-943-5100

UTILITIES

Atmos Energy	1-888-286-6700
TXU Energy	1-800-818-6132
AT&T	
New Service	1-800-464-7928
Repair	1-800-246-8464
Billing	1-800-858-7928
Time Warner Cable	
Customer Service	512-485-5555
Repairs	512-485-5080

OTHER NUMBERS

City of Round Rock	512-218-5400
Round Rock Community Library	512-218-7000
Round Rock Parks and Recreation	512-218-5540
City of Georgetown	512-930-3652
Georgetown Public Library	512-930-3351
Georgetown Municipal Airport	512-930-3666
Georgetown Parks and Recreation	512-930-3595

NEWSLETTER PUBLISHER

Peel, Inc.	512-263-9181
Article Submissions	teravista@peelinc.com
Advertising	advertising@peelinc.com

ADVERTISING INFO

Please support the advertisers that make The Voice possible. If you are interested in advertising, please contact our sales office at 512-263-9181 or advertising@peelinc.com. The advertising deadline is the 8th of the month prior to the issue.

ARTICLE INFO

The Voice is mailed monthly to all Teravista residents. Residents, community groups, churches, etc. are welcome to include information about their organizations in the newsletter. Personal news for the Stork Report, Teenage Job Seekers, recipes, special celebrations, and birthday announcements are also welcome.

To submit an article for The Voice please email it to teravista@peelinc.com. The deadline is the 9th of the month prior to the issue.

Don't Want To Wait For The Mail?

View the current issue of The Voice on the 1st day of each month at www.PEELinc.com

Excellent K-12 College Prep Academics
Small Class Sizes • State-ranked Fine Arts and Athletics



March 8 & 24
 Your family is invited! Tour our K-8 Campus (Speedway) or attend a Student Shadowing Day at our new High School Campus (Mopac/Braker).
 RSVP admissions@hpbs.org

HYDE PARK BAPTIST SCHOOLS . HPBS.ORG
 EXCELLENCE. CHRIST-CENTERED. COMMUNITY. BIBLICAL WORLDVIEW.

PET SITTING BY LYNDA

In-Your-Home Pet Care **Insured • Bonded • References**
 Feeding, Water, Meds, Clean-Up, Walks, Mail, Plants

\$15 15 Min. Visits per Day (Up to 3 Pets)
\$18 1 ea. 30 Min. Visit per Day (Up to 5 Pets)
\$35 2 ea. 30 Min. Visits per Day
\$51 3 ea. 30 Min. Visits per Day

No Holiday Charges

www.PetSittingByLynda.com

7AM-9PM

512.466.7215

512.930.0840

Host an Exchange Student

*Get the thrill of
cultural exchange
without the cost of travel!*



iE International Student Exchange is seeking host homes for high school exchange students from Germany and other nations. We are seeking couples, singles, or families who are willing to open their home to one special exchange student for one semester or for the entire 2010-2011 school year. You will be amazed to find what you gain from the experience, as well as what you give: the chance for one international student to have a lifechanging encounter! This is a great opportunity to connect with someone from another culture. All you need to host is a spare bed and an open heart!

Contact Katie Robinson, Local Coordinator for Austin
512-538-8080 or k.leigh.robinson@gmail.com.

Casino
Night

WHEN: Friday, March 25th
7:00pm to 10:00pm

WHERE: Teravista
Resident's Club

WHY: Come for a great
night of games, food
and cocktails!



*Let us make sure your
biggest investment is structurally sound.*

TUCKER ENGINEERING

1311 Chisholm Trail, Suite 303
Round Rock, TX 78681
Phone (512) 255-7477
Fax (512) 244-3366
www.tuckerengineering.net

Serving Central Texas Since 1979

SPECIALIZING IN
RESIDENTIAL
AND COMMERCIAL
STRUCTURAL INSPECTIONS

STRUCTURAL REPORTS

Structural reports can be furnished in any of the following areas:

- Structural design of houses and apartments including superstructure, foundation and drainage.
- Structural inspections of houses and apartments including drainage, foundation, superstructure, as well as decks, pools and other structures.
- Identification of problems
- Recommended Solutions
- Estimated Costs
- Inspection and Certification for structural repairs

Our reports are concise, easy to read.

We keep your information confidential.

Fees for services are based on the type of structure to be inspected and where it is located

Jeffrey L. Tucker, P.E., a registered professional engineer in Texas, has been involved in structural design, inspection and repair of houses and apartments since 1965. He is uniquely qualified to perform structural analyses of wood frame structures and slab foundations; to inspect and offer assurance of structural integrity and/or repair recommendations and details.

FINANCIAL FOCUS

Are Your Investments Getting Enough Exercise?

Now that spring is here, you may find it easier to get outside to run, bike or take part in other physical pursuits that you enjoy. As you know, the more active you are, the more efficiently your body will work. And the same can hold true for your investments — the more exercise they get, the more potential to work on your behalf.

Just how do investments get “exercise”? Through lots of activity. And you can keep your investments active in at least two ways: through systematic investing and through dividend reinvestment. Let’s take a look at both these techniques.

When you engage in systematic investing, commonly called “dollar cost averaging,” you are continuously putting your money “in motion.” Essentially, you put the same amount of money into the same investments at regular intervals. So, for example, you might decide to invest \$100 per month, in Company ABC stock. To impose this investment discipline on yourself, you could even have the money sent directly from your checking or savings account.

Of course, since the price of ABC stock, like that of all stocks, is constantly changing, your \$100 investment will buy different

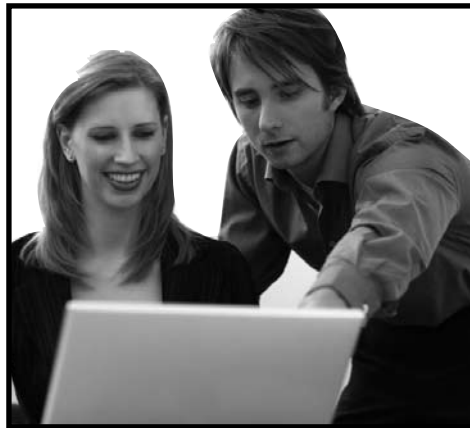
numbers of shares each month. This can work to your advantage, because when the stock price of ABC goes down, your \$100 will buy more shares. When the price goes up, you’ll automatically be a smart enough “shopper” to buy fewer shares, just as you’d typically buy less of something when its price goes up.

Over time, systematic investing typically results in an average cost per share that’s lower than it would be if you were to make sporadic lump sum investments. If you can lower the cost of investing, this may help boost your investment returns. This also can be an effective way to fund your retirement account(s) each year. (Keep in mind, though,

that even systematic investing can’t guarantee a profit or prevent a loss in declining markets. Also, you’ll need to have the financial resources available to keep investing through up and down markets.)

Dividend reinvestment is similar to systematic investing in that it allows you to build more shares of an investment. But when you reinvest dividends, you don’t even have to take money from other sources to increase your shares — you simply have to request that a stock or a mutual fund, instead of paying you a dividend in cash, reinvest the dividend right back into that same stock or mutual fund. It’s an effortless way of adding shares. Similar to dollar-cost averaging, dividend reinvestment imposes an investment discipline on you — you automatically keep putting money in the market during up and down periods. (Keep in mind that dividends can be increased, decreased or totally eliminated)

Exercising your investment dollars in these ways can help you go a long way toward keeping your portfolio in good shape — enabling you to make healthy progress toward your important long-term goals.



*Knowledge,
Integrity, &
Hard Work.*

Paul & Jan Gillia

We Know Teravista!



Why pay 6% to sell your home?

Flat Rate, Full Service listing agent fee *\$2995. Call for details.

We Also Do Leasing!

**Limited Time Offer*

Visit: OwnInTeravista.com or

Call 512-388-5454 for a free market analysis.

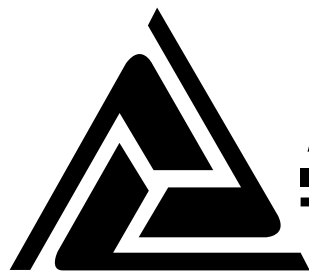


The Right REALTOR Makes All the Difference!

512.302.5555

twitter.com/austintelco

WWW.ATFCU.ORG



AUSTIN TELCO

FEDERAL CREDIT UNION

21 Metro Locations • Free Checking • 250+ Free ATMs

Low-Rate
Mortgage Loans



Contact our Mortgage Specialist, Mark Crowley, at 302.5555 x7388.

3 Round Rock Locations
Louis Henna - La Frontera
University Oaks

If you live, work or worship in the 5 county Austin Metro area

YOU are **ELIGIBLE**
to **JOIN**

Home Equity Loans

4.09%*
5 Year
Fixed Rate

4.39%*
10 Year
Fixed Rate

4.59%*
15 Year
Fixed Rate

4.99%*
20 Year
Fixed Rate

Automobile Loans

New Vehicles
2.85%*
Up to
66 Months

Refinance or Used Vehicles
3.35%*
Up to
60 Months

Commercial Real Estate Loans

20 Year Amortization
4.75%**
5 Year
Fixed Rate

4.99%**
7 Year
Fixed Rate

Jumbo Certificate of Deposit

Minimum Deposit of \$95,000 Required

1.26%***
12 Months

1.66%***
24 Months

Money Market Account

Minimum Daily Balance of \$2,000 Required

0.90%***
\$75,000
to \$124,999

1.06%***
\$125,000
and Above



*Annual Percentage Rate. All rates are expressed "as low as". Actual rate may vary depending on credit qualifications. **Rate applies to 1st lien commercial real estate loans with a loan to value of 80% or less; construction/development loan rates/terms may vary. ***Annual Percentage Yield. Penalties for early withdrawal may apply. Rates and terms are subject to change without notice. Austin Telco Federal Credit Union is federally insured to at least \$250,000 per member by the National Credit Union Administration.

Cardiovascular Disease and Women

Think Red Heart

Do you know the number one killer of women in the United States? It's not breast cancer. Try again. It's heart disease. 489,000 women die from heart disease annually, not breast cancer, according to the Centers for Disease Control and Prevention. In a research study, the American Heart Association reported only 13 percent of all women in the United States are aware that heart disease can kill them or play a major threat in their lives. Women are bombarded with advertisements, news media, and commercials about how breast cancer can kill them. Yet, cardiovascular disease is playing a lethal role in women's health today, more so than cancer.

Cancer is the second killer of women. Though it's not breast cancer, but rather lung cancer. 73,000 women die annually of cigarette related lung cancer. In the United States 202,964 women were diagnosed with breast cancer in 2007, and 40,598 women died from this disease. Receiving regular mammograms and doing daily breast self-checking examinations are crucial for survival. Along with great surveillance, research, and early detection fewer women are succumbing to this disease. Colorectal cancer is the third leading cancer killer in women.

The fact is heart disease is the number one killer in women. Women need to think more Red, along with Pink. Heart disease is a preventable disease and can be controlled. Yes, many contributing factors, such as genetics, gender, and ethnicity, do play a role. However, lifestyle is a major culprit in heart disease. Adopting a healthy lifestyle, which includes the following factors, can reduce the risk of contracting heart disease:

- Exercise regularly.
- Control other contributing factors such as blood pressure, diabetes, hypertension, and cholesterol.
- Maintain a well-balanced nutritional menu that is rich in fruits and vegetables, whole grains, and lean meats.
- Eat high fat foods sparingly.
- Reduce the amount of sodium, sugar, and alcohol.
- Maintain a health body weight.
- Cook meals more frequently.
- Limit pre-packaged foods.

*Article by,
Valerie Salinas, MS*



SOWERS LAWN CARE

Service With Integrity

Top Quality Professional Service
Year Round Lawn Maintenance
Fertilizer and Weed Control Programs
Fire Ant, Lawn Pest and Disease Control
Aeration Services
Hedge Trimming and Mulch Installation
No Riding Mowers = Cleanest Cut, No Ruts

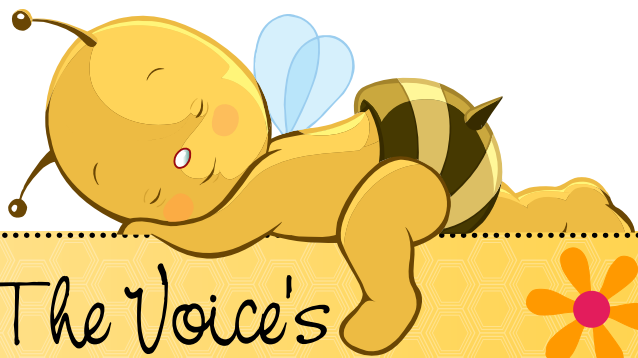
Let a local company earn your business...give us a call!



(512) 779-9988

www.SowersLawnCare.com





The Voice's Newest 'Lil BaBees

Have you recently had a baby or adopted a child?
A new grandbaby? We want to hear all about it!

Email us at teravista@peelinc.com.

Please include your name, along with the
announcement details.

Do You Have Reason to Celebrate?

We want to hear from you! Email teravista@PEELinc.com
to let the community know!

BUSINESS CLASSIFIEDS

NO TIME FOR HOUSE CLEANING? Paying too much for
house cleaning? Call Natalie's Maid Service for a free estimate
at 512-771-3060. Affordable prices * Quality Work * Supplies
Furnished * Bonded * Call now for a free estimate and \$15.00
off your first clean. www.nataliesmaids.com.

\$10 OFF

Monthly Tuition
for 6 months
&

\$25 OFF

Registration*

Imagine...

not just raising grades,
but realizing potential.

**KUMON MATH & READING CENTER OF
ROUND ROCK-OLD SETTLERS
(512) 535-4400**

1400 East Old Settlers Blvd., Ste. 304
Round Rock, TX 78664

KUMON®
MATH. READING. SUCCESS.

*Valid at this location for new enrollments only.
Offer expires March. 31, 2011

877-586-6671
www.kumon.com



JOIN US FOR GOLF AND A GREAT CAUSE!

DATE: Wednesday, April 13th
11:00 am Registration - 1:00 pm Start
LOCATION: Flintrock Falls Golf Course

FORMAT: 4-person scramble

COST: \$165 per golfer*

*Includes lunch, dinner, shirt & goodie bag

Please join us for the 3rd annual
Colin's Hope Classic charity golf tournament
and help prevent childhood drownings.

Special Guest Emcee will be **Bob Fonseca**
of the 93.7 KLBJ FM Dudley & Bob Morning Show

Register online now at:

www.colinshope.org

Email: alissa.magrum@colinshope.org


COLIN'S HOPE

WWW.COLINSHOPE.ORG

Tips for Mastering the Farmers' Market

By Melanie Dragger, M.Com.

Many people are taking steps to improve their health and the environment by eating organically grown and raised foods. While some people are selecting organic items at their local grocery store, farmers' markets are becoming increasingly popular. Over the past year, according to the Department of Agriculture, the number of farmers' markets in the U.S. increased by 858, or 16 percent, from 5,274 in 2009 to 6,132 in 2010. When the USDA first began tracking farmers' markets in 1994, there were only 1,755 markets.

Outside of growing your own produce and raising your own livestock, shopping at a farmers' market is the best way to obtain fresh, local, and seasonal fruits, vegetables, and herbs, as well as farm-fresh eggs, meat, poultry, and dairy products. Many farmers' markets also offer artisan breads, honey, and seasonal jams, jellies, and preserves.

Below are tips to help you master your local farmers' market:

1. Do Your Research – Before heading to the market, research what produce is in season in your area. Since all products sold at a farmer's market may not be organic, and some organic products sold may not be certified, familiarize yourself with the organic certification process and product labeling. Information on the USDA's National Organic Program can be found at <http://www.ams.usda.gov/nop>.
2. Bring Your Own Containers – While some

vendors have bags and boxes available for customers, bringing your own containers is the best way to ensure you will be able to transport and protect your purchases properly. Additionally, recycling containers helps the environment by reducing the number of natural resources used to produce new ones.

3. Bring Cash – Swing by your bank or ATM before hitting the farmers' market. Most vendors do not accept checks or credit cards. Bring small bills, since it may be difficult for some vendors to make change.
4. Go Early or Go Late – The best items usually go first, so try to get to the market early. However, before making a purchase, take a quick trip down the aisles, since prices can vary greatly among vendors. If you can't make it to the market when it first opens, go at the end of the market day to catch deals from vendors trying to unload their remaining products.
5. Speak with Vendors – Shopping at a farmers' market allows you an opportunity to speak directly with growers and farmers. Not familiar with Swiss chard? Looking for a new way to prepare eggplant? Most vendors love to share their knowledge, including discussing their production methods, providing storage and transportation advice, and sharing recipes and cooking tips.

Buying organic products at your local farmers' market offers numerous benefits, including boosting the local economy, reducing the amount

of toxic chemicals that enter your body and the environment, and decreasing the amount of fossil fuels used to transport products to consumers. However, organic products can be more expensive than conventionally grown and raised products, and some organic products may be difficult to find in some areas. If going 100% organic is not feasible, use the following list as a guide. According to the 2010 report of the Environmental Working Group, a non-profit organization specializing in research and advocacy related to public health and the environment, these 12 fruits and vegetables consistently contained the highest amount of pesticides when conventionally grown, and should be consumed in organic form when possible:

1. Celery
2. Peaches
3. Strawberries
4. Apples
5. Blueberries (domestic)
6. Nectarines
7. Sweet Bell Peppers
8. Spinach
9. Cherries
10. Kale/Collard Greens
11. Potatoes
12. Grapes (imported)

The EWG's annual ranking of produce pesticide contamination is based on its analysis of tests conducted by the USDA and the federal Food and Drug Administration. More information on the EWG, as well as the full list of fruits and vegetables ranked, can be found at <http://www.ewg.org>.



Patricia Brown
PBROWN@BROWNMCHAM.COM

**Friendly, Personal And Sensitive Legal Help
For People And Families Facing Divorce,
Bankruptcy, Injury Or Criminal Issues**

**OFFICES IN ROUND ROCK AND AUSTIN, TEXAS
FREE CONSULTATION FOR CRIMINAL AND PERSONAL INJURY CASES!**

WE'RE CLOSE TO YOU™

WWW.BROWNMCHAM.COM

512-246-1149



Chris McHam
CMCHAM@BROWNMCHAM.COM

Seton Care For Your Entire Family

As the leading provider of health care services in Central Texas, the Seton Family of Hospitals is proud to offer a full continuum of care for your family. Our primary care clinics provide a wide range of medical services to improve the health and wellness of infants, children and adults:

- Primary family care
- Physicals and sports exams
- Well-woman annual exams
- Diabetes care and prevention
- Blood pressure and cholesterol management
- Minor emergencies
- Disease management

For more information and directions, please visit:

setonfamilyofdoctors.com

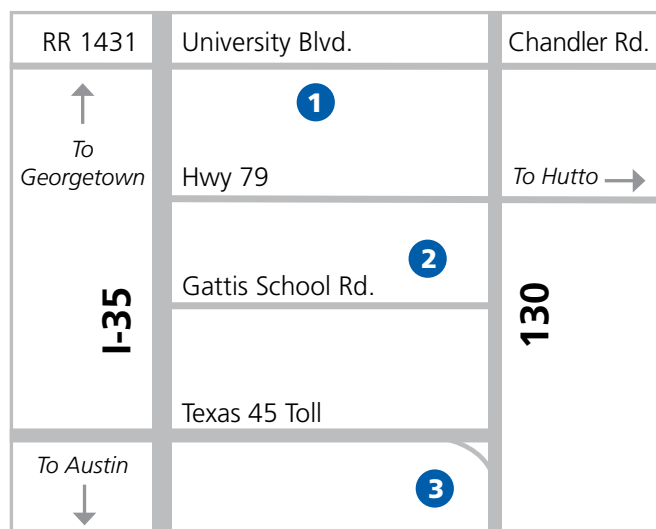


Seton Family of Doctors

A member of the Seton Family of Hospitals



Three Convenient Locations In Round Rock & Pflugerville



1. Seton Family of Doctors at Williamson

Family Medicine
301 Seton Parkway, Suite 302
Round Rock, TX 78665 • Phone: (512) 324-4813

2. Seton Family of Doctors at Forest Creek

Internal Medicine *Adults Only*
4112 Links Lane, Suite 200
Round Rock, TX 78664 • Phone: (512) 324-4870

3. Seton Family of Doctors at Stone Hill

Family Medicine
1512 Town Center Drive, Suite 100
Pflugerville, TX 78660 • Phone: (512) 324-4875

Stone Hill clinic now offers comprehensive cardiac care by the specialists of



Seton Heart Institute

A member of the Seton Family of Hospitals

For appointments, please call (512) 324-4812.



SHOW OFF YOUR SUPERHERO

Parents this is your chance to brag on your kiddos.
We want pictures of your kids doing everyday
things, school events, plays, sports, etc.
Send in your pictures to be featured in
The Voice.

E-mail your pictures to teravista@peelinc.com
by the 9th of the month.



Nobody Teaches Math Like We Do.

MATHNASIUM
The Math Learning Center

1500 A.W. Grimes, Ste 125
Round Rock, TX 78664
512-415-5371
roundrock@mathnasium.com

900 N. Austin Ave, Ste 127
Georgetown, TX 78626
512-869-MATH (6284)
georgetown@mathnasium.com

www.mathnasium.com

K-12th & Home Schooler - Summer Camps
Private Tutoring - Homework Help • SAT/ACT/TAKS Prep

The Voice is a private publication published by Peel, Inc. It is not sanctioned by any homeowners association or organization, nor is it subject to the approval of any homeowners association or organization, nor is it intended, nor implied to replace any publication that may be published by or on behalf of any homeowners association or organization. At no time will any source be allowed to use The Voice contents, or loan said contents, to others in anyway, shape or form, nor in any media, website, print, film, e-mail, electrostatic copy, fax, or etc. for the purpose of solicitation, commercial use, or any use for profit, political campaigns, or other self amplification, under penalty of law without written or expressed permission from Peel, Inc. The information in the newsletter is exclusively for the private use of Peel, Inc.

DISCLAIMER: Articles and ads in this newsletter express the opinions of their authors and do not necessarily reflect the opinions of Peel, Inc. or its employees. Peel, Inc. is not responsible for the accuracy of any facts stated in articles submitted by others. The publisher also assumes no responsibility for the advertising content with this publication. All warranties and representations made in the advertising content are solely that of the advertiser and any such claims regarding its content should be taken up with the advertiser.

* The publisher assumes no liability with regard to its advertisers for misprints or failure to place advertising in this publication except for the actual cost of such advertising.

* Although every effort is taken to avoid mistakes and/or misprints, the publisher assumes no responsibility for any errors of information or typographical mistakes, except as limited to the cost of advertising as stated above or in the case of misinformation, a printed retraction/correction.

* Under no circumstances shall the publisher be held liable for incidental or consequential damages, inconvenience, loss of business or services, or any other liabilities from failure to publish, or from failure to publish in a timely manner, except as limited to liabilities stated above.

Teravista Birthdays

*Send your
Birthday
announcements
to [teravista@
peelinc.com](mailto:teravista@peelinc.com)*



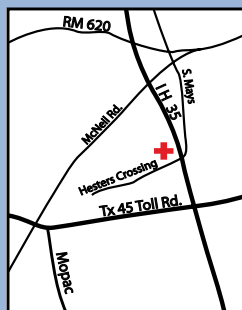
\$14.00 Flu Shots with this ad!

NOW OPEN

Care when you need it. From our family to yours.
(512) 244-3822 www.myeuc.com

HOURS:
Mon-Fri (9a-8p), Sat (9a-5p)
Sun (9a-5p) Now Open!

2000 S. IH 35 Ste. N-5
Round Rock
Next to Luby's



- * Repaints - Interior, exterior, and much more
- * Free on-site estimates
- * Established company for 17 years
- * BBB member
- * Painting, staining, and popcorn ceiling removal

**Please contact Robby Chapman at
512-632-5990 with D&W Painting, Inc.
or by email - robby@dwpainting.com**

**We look forward to helping you
create your perfect home!**



Tips to Turn Your Walk Into a Workout

By Sarah S. Jordan, MS

Walking is a great mode of exercise because it requires no equipment, it is low-impact, and something that many people can do regardless of their fitness level or experience.

Benefits of Walking

Any movement is good movement and the same is true for walking. Like other forms of exercise, walking can help you improve cholesterol levels, lower blood pressure, control weight, improve mood, decrease stress, and it also provides numerous other health benefits. Here are some tips to turning your walk into a workout.

Get the Goods

Proper footwear is essential for any kind of exercise. It is important to select shoes with good arch support and soles that absorb shock and provide cushioning. If you are unsure about fit, Austin has several local shoe stores that will personally fit you to a new pair of sneakers.

Choose clothing that is comfortable to move in and that you feel good wearing. Dress in layers if the weather is cool so that you can adjust as needed during your workout. And take a bottle of water along so that you can hydrate along the way. You may find that taking an iPod along will help keep you motivated.

Walking for Fitness: Proper Speed and Technique

Although the act of walking is simple, walking for fitness takes more effort, attention to speed, and technique. In order to get the most out of your walking

workout, the speed should be brisk and above your "stroll in the park" comfort level. Also, your heart rate should be elevated. A good estimate: 10 - 15 heartbeats in a 6-second pulse count. (Multiply that number by 10 to get heartbeats per minute.) Strike the ground with the heel and drive off from heel-to-toe in order to effectively engage the muscles of your lower-body.

A few minutes after starting your walking workout, take a moment to stretch the calves, quadriceps, and hamstrings. Hold stretches for several seconds (with no bouncing) on each side. After your workout, reward your muscles and improve flexibility by taking a few minutes to stretch. Hold stretches longer here because muscles are warm and can make gains in flexibility at this point.

Just Getting Started?

If you are new to exercise, it is important to check with your doctor before starting an exercise program. Start slowly and gain confidence before adding distance. For

example, you might try walking 10 minutes in one direction and 10 minutes back. Slowly build up to 15 minutes in one direction and 15 minutes back. Over time, build up to 2-3 miles or 40-60 minutes of walking at a brisk pace most days of the week.

A Seasoned Walker?

If you have been walking for quite some time, you may be looking for something new to add to your walking workout. With a few quick additions, you can further challenge and tone muscles and increase the intensity of your workouts.

Add speed. Turn your walk into a speed walk. Engage the arms and the core muscles.

Incorporate intervals. Walk for five minutes. Do an interval for two minutes. Repeat. Intervals can include things like walking lunges, moving side squats, push-ups, and jogging.

Hit the hills. Adding an incline will increase intensity in a hurry!

Add resistance. Use a weighted backpack or vest. Or push your child in the stroller. I did not realize just how much weight I was pushing when I exercise with my son until I did the math recently. He is 25 pounds, and the stroller is 15. That extra 40 pounds adds great intensity (and a whole lot of cuteness) to my workouts!

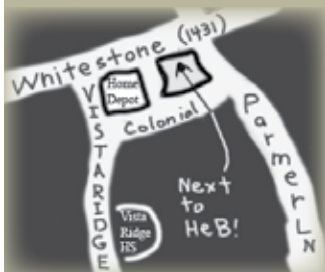
If this is the year that you have devoted to improving health, walking is a great way to start! Remember... "The journey of a thousand miles begins with a single step."



FINE EYEWEAR

Eyecare and Sunglass Boutique

Higher Quality. Better Vision.™



Mark your calendars, its time for Sun,
Summer and Sunglasses!

The 6th Annual
Fine Eyewear Sunglasses Event.

Sat April 9th
Sat April 23rd

Stop by for this special showing - hundreds to try on!
Up to 30% OFF! Visit website late March for details.

2800 E. Whitestone Blvd Suite 210 • 512.260.9779 • www.FineEyewear.Net



THE
BEST
BURGER
IN THE
BEST CITY
IN THE
BEST STATE
IN THE
COUNTRY



SEE WHY AT MIGHTYFINEBURGERS.COM/THEBEST



ARBORWALK
Braker & Mopac N.

SUNSET VALLEY VILLAGE
Brodie & 290

UNIVERSITY OAKS
Next to IKEA

REACHING YOUR NEIGHBORS

and many others...

AUSTIN

Avery Ranch
Barton Creek
Bee Cave
Bella Vista
Belterra
Canyon Creek
Cedar Park Town Center
Cherry Creek on Brodie Lane
Circle C Ranch
Courtyard
Davenport Ranch
Forest Creek
Granada Hills
Hidden Glen
Highland Park West Balcones
Highpointe
Jester Estates
Lakeline Ranch
Lakeway
Lakewood
Laurel Oaks NA
Legend Oaks II
Long Canyon
Lost Creek
Mayfield Ranch
Meadows of Bushy Creek
Pemberton Heights
Plum Creek
Ranch at Brushy Creek
River Place
Sendera
Shady Hollow
Sonoma
Steiner Ranch
Stone Canyon
Teravista
Travis Country West
Twin Creeks
Villages of Westen Oaks
Vista Oaks
Vista Ridge
Westcreek
Westminster Glen
Westside at Buttercup Creek
Wood Glen

HOUSTON

Blackhorse Ranch
Bridgeland
Chelsea Harbour
Coles Crossing
Copperfield
Cypress Mill
Cypress Point
Eagle Springs
Enchanted Valley
Fairfield
Fairwood
Harvest Bend The Village
Lakemont
Lakes of Fairhaven
Lakes of Rosehill
Lakes of Savannah
Lakes on Eldridge
Lakes on Eldridge North
Lakewood Grove
Legends Ranch
Longwood
North Lake Forest
Riata Ranch
Shadow Creek Ranch
Silverlake
Steeplechase
Stone Gate
Summerwood
Village Creek
Villages of NorthPointe
Willowbridge
Willowlake
Willow Pointe
Winchester Country
Winchester Trails
Windermere Lakes
Woodedge Village
Wortham Villages

DALLAS FT. WORTH

Brook Meadows
Timarron
Woodland Hills

SAN ANTONIO

Alamo Heights
Cross Mountain Ranch
Mountain Lodge
Olmos Park
Rivermist
Springwood
Stage Run
The Dominion
Wildhorse

FOR ADVERTISING INFORMATION

Call Today
512-263-9181

www.PEELinc.com
advertising@PEELinc.com

PEEL, INC.
community newsletters



Align Your WORK VALUES with YOUR CAREER

By Amy Wolfgang, M.Ed.

What is your ideal job? How do you make that determination? Many people are unhappy with their current career but are unsure what will make them happy. When individuals want to understand why they are unhappy in their current career the first area to examine is their *work values*.

Work values are characteristics of the activities and opportunities in a job that help make performing the job a satisfying experience. Examples of work values include: variety in work tasks, job security, ability to travel, recognition, etc. When you are evaluating your own career or making a decision on a new career, it is important for you to assess how your work values align with the career you are considering.

Action Steps

Identify Your Work Values

Before you can begin evaluating your work values, first you must identify them. What are the top 5 – 10 work values that are important to your career satisfaction? Sometimes it is hard to think of what we need, although it can be easy to identify what we do not like in a career. Think back

to those times that you may have been upset about your career situation. For example, the time when you did a lot of work on a project and no one recognized it. This could mean that recognition is an important work value to you. What if you are unhappy in your current career because every day you complete the same tasks as you did the week before? This could mean that variety is an important work value for you.

To get you started, here are samples of some work values that might be important to you:

- Variety of Work
- Autonomy
- Flexible Hours
- Education/Training Opportunities
- Workplace Environment
- Status of Job
- Pay/Salary
- Recognition/Praise
- Opportunities for Advancement
- Socialization/Interaction

Rank Your Work Values

Now that you have identified the items that are important to you in a career, you will need to rank them in order of importance.

No one job may be able to meet all of your work values, however, a job that is a good match for you should be able to meet your most important ones.

Evaluate Your Current Job

Now that you know which values are the most important, ask yourself this question: Is your current job meeting your work values? If it's not, *don't worry*. It does not mean that this isn't the right career for you. It does mean that some things need to change in your job for you to achieve greater satisfaction. This may provide a great opportunity for you to speak with your supervisor about ways some of your work values can be met.

For example, if you value creativity, but always seem to be completing the tasks rather than helping to develop the solutions, talk to your supervisor about potential projects you can assist with on the creative side. If you value learning, then identify areas that seem interesting to you and ask your supervisor about helping in those areas so you can learn new skills. These tactics are also a great way to show your company that you are committed and capable.

THE FENCE DOCTOR, LLC

The Doctor's Services:
Pressure Washing to remove dirt & grime
Hand Application of superior stains • Mend "sick" fences & gates
Replacement of broken & rotten pickets
Professional Cleanup of work area

The Fence Doctor - Terry A. Singleton, Owner
703 Clear Spring Cove • Round Rock, TX 78665
C: (512) 573-0692 • www.thefencedoctor.net
terry@thefencedoctor.net • info@thefencedoctor.net

Terry's LAWN & OUTDOOR

Lawn & Outdoor Services	Pressure Washing Services
Lawn Mowing	Patios & Decks
Lawn Edging	Fences
Lawn Fertilization	Porches
Tree Trimming	Garages & Driveways
Shrub & Hedge Trimming	Windows

Terry's Lawn & Outdoor - Terry A. Singleton, Owner
703 Clear Spring Cove • Round Rock, TX 78665
C: (512) 573-0692 • www.thefencedoctor.net
terry@thefencedoctor.net • info@thefencedoctor.net



PEEL, INC.

308 Meadowlark St.
Lakeway, TX 78734-4717

PRSR STD
U.S. POSTAGE
PAID
PEEL, INC.

TER

ADVERTISE
*Right on mark
for your
target audience*
Call Today 512-263-9181.

PEEL, INC.
community newsletters

www.PEELinc.com
512-263-9181