

# Canyon Creek CHRONICLE

APRIL 2011

VOLUME 5 ISSUE 4

## LEANDER ISD SUPERINTENDENT,

*Dr. Bret A. Champion*

### IS GUEST SPEAKER AT FOUR POINTS CHAMBER OF COMMERCE APRIL LUNCHEON

Four Points Chamber of Commerce is delighted to have Leander Independent School District Superintendent, Dr. Bret Champion as the guest speaker for the Four Points Chamber's April Luncheon. Dr. Champion will share the latest information on how Texas Public Schools are facing an unprecedented financial crisis, and how LISD is navigating through this crisis to remain one of the premier school districts in the state. Four Points Chamber luncheons provide stimulating discussions for local individuals, businesses and organizations to gain new insights and foster business growth. Membership is not a requirement to come to the luncheon but you'll want to register online to ensure your seat and receive early-bird discount pricing!

**Thursday, April 21, 2011**

**Time: 11:30 a.m. to 1p.m.**

**At River Place Country Club, 4207 River Place Boulevard.**

You can find all the details and register on the Four Points Chamber of Commerce Web site [www.fourpointschamber.com](http://www.fourpointschamber.com). While you are at the Chamber's Web site be sure to check out the other networking activities offered by the chamber, including the monthly Happy Hour and bi-monthly Connectors networking meetings at Concordia University.

The Four Points Chamber of Commerce provides networking opportunities through social gatherings, luncheons and business network meetings. Now well over 100 members strong and growing, the Four Points Chamber of Commerce brings businesses together along Highway 620 from Hudson Bend and Mansfield Dam to Anderson Mill, and along Ranch Road 2222 from Jester to Volente, to support business growth in the community. For more information about upcoming events contact us at [FourPointsChamber@gmail.com](mailto:FourPointsChamber@gmail.com), visit [www.fourpointschamber.com](http://www.fourpointschamber.com) or call (512) 551-0390. Membership inquiries may also be sent directly to [membership@FourPointsChamber.com](mailto:membership@FourPointsChamber.com).

## AUTISM ROBS YOU OF YOUR CHILD!

*By Connie Ripley*

Light It Up Blue in April. April is Autism Awareness Month. Autism Speaks is asking buildings around the world to turn their lights blue and people to wear blue on April 1 & 2.

One out of 110 children is diagnosed with autism (1 out of 70 boys). More children will be diagnosed with autism this year than with AIDS, diabetes and cancer combined.

Autism is a complex neurobiological disorder that impacts communication, behavior and social relationships. Currently no effective means to prevent autism, no fully effective treatments and no cure exists for this disorder that robs families and children of smiles, eye contact, communication, hugs and even the ability to eat in a restaurant.

### KNOW THE SIGNS

*These "absolute indicators" or "red flags" indicate your child should be evaluated.*

- No big smiles or other warm, joyful expressions by 6 months.
- No back-and-forth sharing of sounds, smiles, or other facial expressions by 9 months.
- No babbling by 12 months.
- No back-and-forth gestures, such as pointing, showing, reaching or waving by 12 months.
- No words by 16 months.
- No two-word meaningful phrases (without imitating or repeating) by 24 months.
- Any loss of speech or babbling or social skills at any age.

Does your child make eye contact with you? Does he/she enter into meaningful exchanges? Does he/she "tantrum" in the grocery store or when transitioning from one thing to another? Instead of "racing" toy cars, does your child flip them over and roll the wheels or stack them in a line? If any of these things exist, insist on an immediate evaluation. Early intervention may be your child's best hope. Since this disease has accelerated so much recently, many pediatricians just do not recognize the signs. *(Continued on Page 3)*

## IMPORTANT NUMBERS

### EMERGENCY NUMBERS

EMERGENCY ..... 911  
Fire..... 911  
Ambulance..... 911  
Sheriff – Non-Emergency..... 512-974-5556  
Hudson Bend Fire and EMS

### SCHOOLS

Canyon Creek Elementary ..... 512-428-2800  
Grisham Middle School ..... 512-428-2650  
Westwood High School..... 512-464-4000

### UTILITIES

Pedernales Electric..... 512-219-2602  
Texas Gas Service  
Custom Service ..... 1-800-700-2443  
Emergencies ..... 512-370-8609  
Call Before You Dig ..... 512-472-2822

### AT&T

New Service ..... 1-800-464-7928  
Repair ..... 1-800-246-8464  
Billing ..... 1-800-858-7928  
Time Warner Cable  
Customer Service ..... 512-485-5555  
Repairs ..... 512-485-5080

### OTHER NUMBERS

Balcones Postal Office ..... 512-331-9802

### NEWSLETTER PUBLISHER

Peel, Inc. .... 512-263-9181  
Article Submissions ..... canyoncreek@peelinc.com  
Advertising ..... advertising@PEELinc.com

## ADVERTISING INFO

Please support the businesses that advertise in the Canyon Chronicle. Their advertising dollars make it possible for all Canyon Creek residents to receive the monthly newsletter at no charge. If you would like to support the newsletter by advertising, please contact our sales office at 512-263-9181 or advertising@peelinc.com. The advertising deadline is the 9th of each month for the following month's newsletter.

# NOT AVAILABLE ONLINE



# AUSTIN TELCO

FEDERAL CREDIT UNION  
WWW.ATFCU.ORG 302.5555

## Low Rate Mortgage Loans

Contact our mortgage specialist, 512.302.5555 x7388

Is 10 minutes of  
your time worth  
\$1,200?

Refinance your auto loan  
with Austin Telco.  
A rate reduction of 2%  
could save you \$1,200 over  
the life of the loan.<sup>1</sup>

<sup>1</sup>Example based on a \$20,000 loan  
for 66 months at 3.35% vs. 5.35%.



### Automobile Loans

New Vehicles ..... 2.85%\*  
Up to 48 Months  
Used or Refinanced ..... 3.35%\*  
Up to 60 Months

### Home Equity Loans

4.15%\* ..... 5 Year Fixed Rate  
4.45%\* ..... 10 Year Fixed Rate

21 Metro Locations

Free Checking - 250+ Free Atms



Follow Us  
twitter.com/austintelco



<sup>1</sup>Annual Percentage Rate. All rates are expressed "as low as". Actual rate may vary depending on credit qualifications. Rates and terms are subject to change without notice. Austin Telco Federal Credit Union is federally insured to at least \$250,000 per member by the National Credit Union Administration.

**Autism Robs You of Your Child!** - (Continued from Cover Page)

The prevalence of the disorder rose 57% between 2002 and 2005. In 1975, autism effected 1 in 5,000. Today it affects 1 in 110 children. Autism is the fastest-growing serious development disability in the U.S. It costs the nation \$35 billion a year, and that figure is sure to rise.

In order to raise awareness of this escalating disorder, landmarks, iconic buildings, schools, universities, hospitals, airports, businesses and people in Australia, Bahrain, Belgium, Brazil, Canada, Cypress, Denmark, France, Hungary, Ireland, Kenya, Netherlands, New Zealand, Romania, Sri Lanka and the United States from Los Angeles to Savannah and from Minneapolis to Houston will be changing their light bulbs, clothing themselves, and eating and drinking blue for the month of April.

Texas State Senator Florence Shapiro will read a proclamation of Autism Awareness Month on the Texas State Senate floor on April 4th. To commemorate the fourth annual United Nations World Autism Awareness Day and Autism Awareness Month, change your light bulbs to blue and wear blue on April 1 and 2.

It's easy! Just change your light bulbs from white to blue! To make things even easier, Home Depot will carry a complete supply of blue blubs for the event.

Toys R Us has a month long Autism Speaks campaign. Pump It Up has scheduled The Great Jump for April 7.

Even as autism escalates at alarming rates, it receives only 0.5% of the National Institutes of Health funding. Autism Speaks is North America's largest autism science and advocacy organization.

Autism Speaks is funded primarily by local walks. The Greater Austin Walk Now for Autism Speaks committees are being formed for the fall walk. Your help is needed! Please contact Walk Manager Traci Whitney at [traci.whitney@autismspeaks.org](mailto:traci.whitney@autismspeaks.org)

*Watch for the 12 diagnostic markers and the possible causes of autism in the following issues of your neighborhood newsletter.*



**NICHOLSON**  
Early Childhood Education Center

**Half-Day Preschool**

18 months – 5 years  
8:30 am – 12:30 pm  
2, 3 or 5 days a week  
year round

Optional "Nap & Snack" until 3:00 pm

Now enrolling for SUMMER or FALL

12233 RR 620 N. Ste 201 Austin, TX 78750 • 512-243-6539 • [www.nicholsonECEcenter.com](http://www.nicholsonECEcenter.com)

**You're just one phone call away from a beautiful lawn and carefree weekends.**

**Guaranteed!**

*Try our lawn care & landscape services for one month. --- If you're not absolutely delighted with the results, we'll refund 100% of your money.*

**Professional Lawn Care & Landscaping You Can Trust!**

Austin Detailers --part of the Better Business Bureau since 2003, with an A+ rating! When you hire our professional lawn care team, you'll be assigned your own personal lawn care account manager; someone dedicated to your neighborhood; someone you'll know on a first-name basis; and someone you can trust to take care of your lawncare and landscaping needs, 100% guaranteed.

We're a year round professional landscape management company, not just a "lawn service" or part time "lawn guy." We offer a full range of lawncare and landscape management services, and we deliver with integrity and competence. We proactively manage your lawn, landscape, and sprinkler system so you can avoid unsightly or expensive problems down the road.

**Spring Specials:**

- **Aerate Your Lawn for ONLY \$99!** This includes pre and post check of your sprinklers, call to DIGTESS to mark your underground utilities, and front and back yard core aeration.
- **Compost and Topdress for \$69!** Includes one cubic yard of compost/soil spread on top of grass for healthy, GREEN grass this spring! This price includes labor and material, does NOT include delivery of compost.

*Hurry, spring specials only good through April 30, 2011*

**Here is what one of our satisfied clients had to say:**

*"We are extremely pleased with the work done at our home by Austin Detailers. We hired them earlier this year to completely rehaul our front and back yards. They installed an irrigation system, new sod, a beautiful stone path, a pea gravel patio and metal edging around both new and existing beds. Their attention to detail and high quality of work are evident in every aspect of the project. Dave and his fantastic crew delivered a finished product that more than surpassed all of our expectations. We highly recommend them to anyone looking for terrific landscaping along with great customer service."* - Michael P.



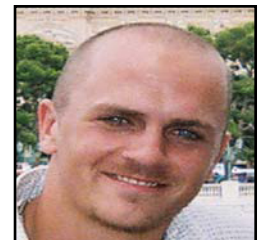
**Austin Detailers**

A Lawn and Landscape Management Company

*"We're Ready For Your Phone Call"*

(512) 249-0101

[www.AustinDetailers.com](http://www.AustinDetailers.com)



David Hunsaker, Owner

**No. 1**  
SIX YEARS  
IN A ROW

## Time and Again, Our Heart Program Comes in First.

For six years in a row, HealthGrades® has ranked Heart Hospital of Austin as the number one heart program in Texas, an accomplishment no other hospital has achieved. What's more, Thomson Reuters ranks us as one of the Nation's 100 Top Hospitals® for Cardiovascular Care — for the fifth time. Here, we put patients and their families first. That's why we're dedicated to providing the highest quality care and achieving better outcomes. And it's why we're recognized by so many quality-rating organizations. So if you're seeking the best in heart care, choose the hospital that ranks at the top.

 **HEART HOSPITAL of AUSTIN**  
A campus of St. David's Medical Center

512-407-7000

[HeartHospitalofAustin.com](http://HeartHospitalofAustin.com)

 **HEALTH GRADES**  
GUIDING AMERICA TO BETTER HEALTHCARE®  
2004-2009

 **THOMSON REUTERS**  
TOP HOSPITALS  
CARDIOVASCULAR  
2004-2005, 2007-2009

## NATUREWATCH

by Jim and Lynne Weber

### Arboreal Ardor

From late winter into late spring, many of the night sounds you hear are not insects at all, but members of the wide-ranging Hylidae family, a group of cricket, tree, and chorus frogs. This group of true treefrogs and their allies have adaptations that reveal their mostly arboreal lifestyle, such as forward-facing eyes for binocular-like vision, adhesive pads on their fingers and toes, and a fondness for eating insects. Often not seen due to their diminutive size, these frogs are commonly mistaken for insects, due to their ability to produce loud and varied mating calls. Known as 'advertisement calls', these calls are produced by the males to attract females and warn other rival males during the breeding season.

The Green Treefrog (*Hyla cinerea*) is a common, 1-2 inch frog with a slender, bright green body, cream-colored belly, and white lips that extend into lateral stripes along the sides of its body. Found in the eastern third of our state, this frog walks rather than jumps when on the ground. It is nocturnal, and prefers wet areas such as swamps, edges of lakes, and streamsides. During its breeding season from March to October, the males start calling just before dark, and sound like groups of tiny ducks quacking. Females, which are slightly larger than the males and lack the wrinkled vocal pouch, lay their fertilized eggs enclosed in a jelly envelope attached to floating vegetation. Influenced by the weather, breeding often takes place during or after a rain.

At ½ to 1 ½ inches, the Northern Cricket Frog (*Acris crepitans*) is found throughout most of the state, except for the Panhandle and West Texas. Gray to green-brown, this frog has a long rounded snout, dark bands behind its limbs, and a distinguishing triangular patch behind the eyes that points down its back. Diurnal and active all year, these frogs prefer shallow but permanent ponds with vegetation and full sun. Often seen basking during the daytime, they will jump quickly into the water or away when disturbed, and are capable of covering 6 feet in one leap! Although they are part of the treefrog family, they are much more terrestrial and are excellent swimmers. When chorusing, especially at night, the male's call sounds like clicking small rocks or pebbles together. Mating occurs in late spring, with the female laying one egg at a time on submerged vegetation.

Strecker's Chorus Frog (*Pseudacris streckeri*) is a less common 1 – 1 ½ inch nocturnal frog that inhabits moist, wooded canyons and rocky ravines in the eastern half of the state. Its color can vary from gray to brown to olive, with a thick, dark stripe through and a dark spot under each eye, with longitudinal spots on its back. Often, this frog can show a deep orange or yellow coloration around the groin. While it prefers loose soil where it can burrow to protect itself from predators, drought, and daytime heat, it is also a strong climber.

*(Continued on Page 5)*



## Nature Watch - (Continued from Page 4)

Unlike many other frog species, this frog breeds from November to April or May, when you may hear a single male's call of one bell-like note, repeated rapidly, or a chorus of asynchronous calls that sound like a squeaky wheel.

When you're out on a quiet night from winter to late spring or early summer and near one of our natural areas, see if you can hear and identify the sounds of arboreal ardor!

*Send your nature-related questions to [naturewatch@austin.rr.com](mailto:naturewatch@austin.rr.com) and we'll do our best to answer them. If you enjoy reading these articles, look for our book, *Nature Watch Austin*, to be published soon by Texas A&M University Press.*



Photos; Left to Right

Streaker's Chorus Frog | Northern Cricket Frog | Green Treefrog

## Free Household Document SHREDDING

With the increased awareness of identity theft, it is more important than ever to carefully dispose of personal records such as credit card statements and checking account records. ARMA and the City of Austin Solid Waste Services are sponsoring a free "Shred Day." Mark your calendar for Saturday, April 16, 8:00 a.m. to 1:30 p.m. at the Austin High School parking lot. Households can bring up five boxes of paper records for shredding. Mobile shredding trucks will be on site to shred all materials. Please make sure your records are paper only (no hard plastics, no plastic bags, electronic media or three-ring binders) and are not wet. In lieu of a fee – monetary donations will be accepted for the Capital Area Food Bank.

*For more details regarding the free household shredding, e-mail [Jannette.goodall@ci.austin.tx.us](mailto:Jannette.goodall@ci.austin.tx.us)*



## Riviera Marina

Austin's Finest on Lake Travis

**2 Months FREE\***  
\*New customers only

**Only \$125/month\***  
\*New customers only  
\*18ft and under

- 10 Minutes from your door
- Hassle free boating
- Wet & dry slips available
- Full Service Department
- Top of the line customer service

14297 FM 2769 Office (512) 250-8321  
Leander, TX 78641 Service (512) 918-2477

[www.RivieraMarina.com](http://www.RivieraMarina.com)



## Way Off Broadway

Community Players

Presents the Fifth Show of our 14th Season



Directed by Ed Trujillo

**APRIL 15, 16; 22, 23; 29, 30; MAY 6, 7, 2011 AT 8PM**  
**MATINEE, MAY 1, 2011 AT 3PM**

**For Information and Reservations:**

**(512) 259-5878 or [www.wobcp.org](http://www.wobcp.org)**

11880 West FM 2243, Bldg 4 \* Leander, Texas 78641  
1 mile west of 183 North & 0.1 miles east of Bagdad Rd

**COME SEE US IN OUR NEW HOME!!!!**

## FINANCIAL FOCUS

### Sandwich Generation Needs “Stress Busters”

You may be too busy to realize it, but April is Stress Awareness Month. Sponsored by the Health Resource Network, a non-profit health education group, Stress Awareness Month is designed to promote awareness about ways to reduce stress in our lives. And if you're a member of the so-called “Sandwich Generation,” you may well have plenty of stress to deal with — especially financial stress. And that's why you may want to look at this month as an opportunity to explore ways of “de-stressing” yourself.

To understand the scope of the problem facing people in your situation, consider this: One out of every eight Americans aged 40 to 60 is both raising a child and caring for an aging parent, according to the Pew Research Center. The definition of “caring” for an elderly parent can range from actually having the parent living in one's home to helping



pay for the parent's stay in an assisted living or nursing home facility. When you consider the costs involved in this type of care, added to the expenses of raising your children, and possibly even providing some financial support to them as young adults, it's easy to see that you could potentially face enormous strains, both emotionally and financially.

*To help ease this burden, consider these suggestions:*

- **Save.** As a Sandwich Generation member, you're probably within shouting distance of your own retirement — so you need to be saving for it. This may not be easy. You don't know how much financial support you may someday have to provide your elderly parents — and even after your children are grown, they may need some help from you. Unfortunately, in helping these “boomerang” children, many people have to disrupt their day-to-day cash flow and raid their savings. That's why it's important to try to “pay yourself first” by deferring part of each paycheck into your 401(k) and by automatically moving money, each month, from your checking or savings account into your IRA.

*(Continued on Page 7)*

What's on your to-do list this month?

Change Your World - sundays @ 10 am

THE RADIANT CHURCH | WATCH LIVE services Sunday mornings  
or view any time at [www.ghbc.org](http://www.ghbc.org)

Sunday Morning Schedule  
10:00 - Worship  
8:30 & 11:30 - Bible Life Groups (all ages)

Great Hills Baptist Church  
10500 Jollyville Road . Austin, Texas 78759 | 512.343.7763

# Canyon Creek HOA Members, You Can Join!

## RBFCU

Lake Creek Branch  
10135 Lake Creek Pkwy.

Join online - [rbfcu.org](http://rbfcu.org)  
512-833-3300 | 1-800-580-3300  
Federally insured by the NCUA

## Financial Focus - (Continued from Page 6)

- **Talk.** Many people in the “Greatest Generation” (over age 80) have not even prepared a will, so, if your parents are in that group, you may want to talk to them about taking action. Also, find out whom, if anyone, is handling their investments. And ask if your parents understand how Medicare works and if they need to add supplemental health insurance, such as Medigap. Plus, you need to find out if your parents have created a power of attorney or health care directive. It’s best to have these conversations sooner, rather than later.
- **Delegate.** You eventually may have to take some responsibility for your parents’ care — but you don’t have to do it alone. You could, for example, work with a financial services provider that offers trust services, which can be invaluable if your parents are incapacitated, but which are useful even if they aren’t. A professional trust officer can, among other duties, help manage your parents’ investments, pay their bills, keep their records and supervise distribution of their assets to beneficiaries. In short, a qualified trust officer can make life a lot easier for you.

Stress Awareness Month only lasts 30 days, but by taking the right steps, you can de-stress yourself for many years to come. After all, just because you’re in the Sandwich Generation, it doesn’t mean you have to be “squished.”

The Canyon Chronicle is a private publication published by Peel, Inc. It is not sanctioned by any homeowners association or organization, nor is it subject to the approval of any homeowners association or organization, nor is it intended, nor implied to replace any publication that may be published by or on behalf of any homeowners association or organization. At no time will any source be allowed to use the Canyon Chronicle Newsletter contents, or loan said contents, to others in anyway, shape or form, nor in any media, website, print, film, e-mail, electrostatic copy, fax, or etc. for the purpose of solicitation, commercial use, or any use for profit, political campaigns, or other self amplification, under penalty of law without written or expressed permission from Peel, Inc. The information in the newsletter is exclusively for the private use of Peel, Inc.

DISCLAIMER: Articles and ads in this newsletter express the opinions of their authors and do not necessarily reflect the opinions of Peel, Inc. or its employees. Peel, Inc. is not responsible for the accuracy of any facts stated in articles submitted by others. The publisher also assumes no responsibility for the advertising content with this publication. All warranties and representations made in the advertising content are solely that of the advertiser and any such claims regarding its content should be taken up with the advertiser.

\* The publisher assumes no liability with regard to its advertisers for misprints or failure to place advertising in this publication except for the actual cost of such advertising.

\* Although every effort is taken to avoid mistakes and/or misprints, the publisher assumes no responsibility for any errors of information or typographical mistakes, except as limited to the cost of advertising as stated above or in the case of misinformation, a printed retraction/correction.

\* Under no circumstances shall the publisher be held liable for incidental or consequential damages, inconvenience, loss of business or services, or any other liabilities from failure to publish, or from failure to publish in a timely manner, except as limited to liabilities stated above.



## We solve all the pieces to the puzzle.

Call Today to Get Started  
On All Your Printing Needs.

1-888-687-6444 ext. 23

EXPERIENCE MATTERS doing business for 30+ years.

Quality

PRINTING COMPANY







CONSTANT VISUAL  
 SUPERVISION



LEARN TO SWIM



WEAR LIFE JACKETS



MULTIPLE BARRIERS ON  
 ALL POOLS & SPAS



KEEP BACKYARDS &  
 BATHROOMS SAFE



ALWAYS CHECK POOL/SPA  
 FIRST FOR MISSING CHILD



LEARN CPR



# COLIN'S HOPE

*Increasing water safety awareness and standards*

BE SAFE IN THE WATER  
 & HAVE THE  
 BEST SUMMER EVER!



**Join us in getting ready for a safe summer in the water!**

**Colin's Hope Community Water Safety Splash and Walk  
 Saturday, April 30th 10AM-3PM**

The whole family can splash into our Water Safety Challenge and Life jacket Swim or try out a Stand Up Paddle Board at The Expedition School Lagoon (On Lady Bird Lake in East Austin next to Fiesta Gardens.) Volunteers are also needed to pick up and distribute water safety packets to homes in zip codes that have high incidences of drowning. This is a great family or group volunteer activity. Email [alissa.magrum@colinshope.org](mailto:alissa.magrum@colinshope.org) to volunteer. Together, we can prevent drowning and save lives.

**Colin's Hope Night at Eastside Movies in the Park  
 Tuesday, May 3rd, Doors open at 6PM, Movie at sundown**

Join us at The Expedition School Lagoon (On Lady Bird Lake in East Austin next to Fiesta Gardens) for a screening of Whale Rider. Bring your family and friends to enjoy the movie under the stars.

**Colin's Hope Day at Schlitterbahn-New Braunfels  
 Saturday, May 21st**

Join us for a day to promote Water Safety and Drowning Prevention at Schlitterbahn-New Braunfels! Special tickets are available from Colin's Hope. Email [alissa.magrum@colinshope.org](mailto:alissa.magrum@colinshope.org) for more information.

**For more information, visit our website at [www.colinshope.org](http://www.colinshope.org)**