

# THE Current

## SHADOW CREEK RANCH

NOVEMBER 2011

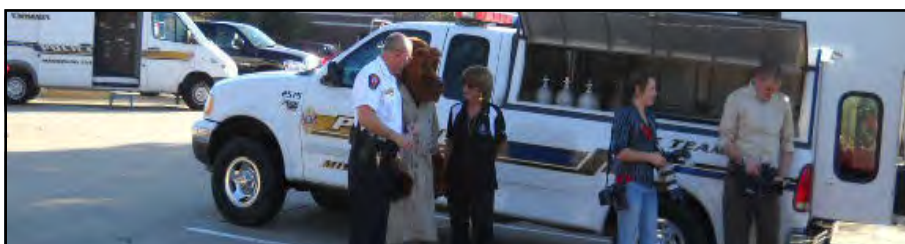
OFFICIAL PUBLICATION OF THE SHADOW CREEK RANCH HOA

VOLUME 3, ISSUE 11



### SHADOW CREEK RANCH HOA

*Would like to thank everyone who participated in NNO!*



### Silver Leaf Glen NNO

Thanks to everyone who came out to our Silver Leaf Glen National Night Out gathering last month! The event was a great success. In addition to enjoying an evening with all our neighbors, we had several special visitors. Thanks to the Constable's office, Pearland Police Department, and the Pearland Fire Department for stopping by for a visit. It's not every day that the neighborhood kids are allowed to get that up close and personal with a huge fire truck! Also, a very special thanks to HEB Plus for donating the supplies for the evening. If you weren't able to make it this year, we'd certainly love to see you next year. Please make sure that I have your contact information so you can be notified of events going on in the neighborhood. Have a great Fall!

Kathryn Ledet- [silverleafglen@gmail.com](mailto:silverleafglen@gmail.com)



# IMPORTANT NUMBERS

## EMERGENCY NUMBERS

EMERGENCY .....	911
Fire.....	911
Ambulance.....	911
Sheriff – Non-Emergency.....	281-331-9000
Pearland Police Department .....	281-997-4100

## SCHOOLS

Mary Marek Elementary .....	281-245-3232
Laura Ingalls Wilder Elementary .....	281-245-3090
Manvel Junior High .....	281-331-1416
Alvin Senior High .....	281-331-8151
Manvel High School .....	281-245-2235
Alvin ISD Administration .....	281-338-1130
Alvin ISD Transportation .....	281-331-0960

## UTILITIES

Electricity - Reliant Energy.....	713-207-7777
Gas - Center Point .....	713-659-2111
Trash Removal - City of Pearland .....	281-652-1600

## OTHER NUMBERS

Pearland Post Office .....	281-485-2132
Poison Control.....	800-764-7661
Brazoria County Health Department .....	979-864-1484
Animal Control.....	281-756-2265
Cable/Internet/Phone...COMCAST .....	713-341-1000

## CITY

Pearland City Hall.....	281-652-1600
Pearland Utility Billing - Water Dept. ....	281-652-1603
Pearland Animal Control.....	281-652-1970
Pearland Police Dept - Non-Emergency .....	281-652-1100
Pearland Public Works.....	281-652-1900

## NEWSLETTER

Articles.....	blopez@amitx.com
Publisher	
Peel, Inc. ....	1-888-687-6444
Advertising.....	1-888-687-6444

# MGMT COMPANY

## ASSOCIATION MANAGEMENT, INC.

Community Manager	
Maria Southall-Shaw.....	mshaw@amitx.com
Community Liason Manager	
Bobbie Lopez.....	blopez@amitx.com
Assistant Community Manager	
Holly Blesener .....	hblesener@amitx.com
Property Maintenance	
Mark Simien.....	msimien@amitx.com
Service Specialist	
Lisa Mayon.....	lmayon@amitx.com

[www.AMITX.com](http://www.AMITX.com)

# 10 TIPS TO AVOID THANKSGIVING STRESS

*Thanksgiving can be one of the most fun and fulfilling holidays of the season, but it can also be filled with stress. Here are some tips to reduce that stress, and make the most of Turkey Day!*

**1. Arm yourself with a plan:** Sit down and make a guest list. From the number of guests, plan your menu. Then you can create a complete shopping list and decide if you're doing all of the cooking or if others will be bringing dishes. Take inventory at least two weeks out of your dinnerware, kitchen tools, and gadgets, spices and other staples in your pantry, and don't forget to count chairs!

**2. Shop early:** Grocery stores get more packed the longer you wait, plus you run the risk of some of your needs being sold out. Try to do your shopping early morning or late evening at least one week before the big day.

**3. Make-ahead magic:** Plenty of side dishes, desserts, and breads can be made ahead of time. This frees up your counter space and your to-do list. If you do have to make several dishes on Thanksgiving, try to distribute them evenly between the stovetop, the oven, and the microwave.

**4. Perform a test flight:** If you're making a side dish for the first time or using ingredients that you aren't familiar with, try them out beforehand so you'll be prepared for success on Thanksgiving Day. Ditto if you're serving a new wine or using new equipment, like a brand new oven.

**5. Manage the little ones:** Keeping the kids occupied takes time as well. Having a group of kid-friendly DVDs on hand is a no-brainer, but don't stop there. Kids can help in the kitchen with cookie decorating or in the dining room with setting the table.

**6. Shrink the menu:** With the size of the feast on most of our tables, it really isn't necessary to load your guests up on dips, snacks, or appetizers. A platter of cut fresh vegetables should do the trick.

**7. Turkey duty:** As the place where all eyes are focused, preparing a perfect Thanksgiving turkey carries a huge amount of stress. The most important thing: don't forget to defrost the bird. In the refrigerator is the best method, but will take longer. You can also submerge the turkey in cold water to speed thawing. Keep the bird basted as it cooks and let it stand for at least 30 minutes after it comes out of the oven to keep it moist.

**8. Quick fixes:** Purchasing store-bought desserts and adding your own flair is a great timesaver. Defrost a frozen pumpkin pie, top with streusel, and bake. Or simmer cranberries in orange juice and a little sugar just until they pop and spoon over purchased pound cake.

**9. Plan an after-dinner activity:** Plan something for the family to do after dinner. Pre-purchase movie tickets for the opening blockbuster and fold them in your napkins. Have your yard staked out for a game of flag football. Your guests will love having the planning done for them.

**10. Don't sweat it:** The true secret to being a gracious host or hostess (and keeping your own sanity) is to not let small problems ruin the day. If one of your side dishes burns, simply toss it out and enjoy the bounty you do have. If the turkey burns, order take-out. And don't forget to laugh.

**We hope you have found this information helpful & good luck!**

# SHADOW CREEK RANCH

## BUSINESS CLASSIFIEDS

**RAINCO IRRIGATION SPECIALIST:** Commercial & Residential. Backflow Testing, Drainage, Irrigation (Sprinkler) System, Design & Installation, Service & Repair, Rainbird – Hunter. Fully Insured. Lic. # 9004 & 9226. Call 713-824-5327.

**MIKE'S QUALITY CARPET CARE** Work performed by owner. Job done right the first time. Truck mounted cleaning unit, grout and tile, grout sealer, pressure washing, upholstery, carpet steam cleaning includes prespotting, prespray, deodorizer, carpet fibers groomed for fullness and fast drying time. 7 days. Since 1984. 713-645-9955

**CARRIE'S MAID SERVICE** - Are you paying too much for house cleaning? Give us a call - 713-461-7709 - Home Care Tailored to Meet Your Needs - Affordable Prices - Bonded - All Supplies Furnished - Serving the Area Over 14 years - Call Today!

## NORTH BRAZORIA COUNTY DEMOCRATS

The North Brazoria County Democrats meet every month on the Third Saturday at 9am at Del Pueblo Restaurant located at 9330 Broadway in Pearland. Members and the public are welcome to attend. Breakfast is available for purchase and speakers and topics are announced in advance. For more information contact Sue Funkhouser, Democratic County Chair at 713-553-1055 or find us on Facebook as "North Brazoria County Democrats".

## LANDSCAPE CORNER

Regular feedings make a big difference in your lawn and strengthens against heat and drought. Regular feedings help your lawn to be its best and keep it strong in the face of future problems. For your best lawn feed about every 6-8 weeks. It just takes a few minutes to give your grass the nutrients it needs to be its best. Scotts lawn food is kid and pet friendly and can be used any season on any grass type.

*Remember you can feed your lawn at any season!*



**Cathy Spacek**

**832-643-7768**

cathy@cathyspacek.com

redrock811@aol.com

Top Producer &  
Resale Specialist

★ ★ Platinum  
2005 2006 Producer

★ ★  
2009 2010

*When You're Ready to Sell  
Call Your Community Experts!*

### Shadow Creek Ranch Top Producers

*with More SCR Homes Sold  
than Any Other Realtors!*

and



**Partnering Expert Knowledge  
With Aggressive Marketing Strategy  
to Get Your Home Sold!**



**Ricki Stockwell**

**713-306-3773**

redrock811@aol.com

Top Producer  
& Resale Specialist

Platinum ★ ★ ★  
Producer 2004 2005 2006

★ ★ ★ ★  
2007 2008 2009 2010

*"Puzzled? Let Me Help  
You Put the Pieces Together!"*

*"Measuring Success  
One Family at a Time"*



# SHADOW CREEK RANCH

## Avoid Home Damage from Frozen Pipes

A fast-moving cold front can cause temperatures to drop below freezing within hours. Outdoor pipes, pipes in unheated areas, and pipes that run along uninsulated exterior walls can burst if the water in them freezes and expands. This can shatter pipe seals or the pipes themselves, sending water pouring through your house. You can avoid thousands of dollars of damage to your walls, ceilings, carpets, and furniture by taking a few simple measures to protect your home.

### BEFORE THE FREEZE

- Protect faucets, outdoor pipes, and exposed pipes in unheated areas by wrapping them with rags, newspaper, trash bags, or plastic foam.
- Insulate your outdoor water meter box and be sure its lid is on tight.
- Cover any vents around your home's foundation.
- Drain and store water hoses indoors.
- Protect outdoor electrical pumps.
- Drain swimming pool circulation systems or keep the pump motor running. (Run the pump motor only in a short freeze. Running the motor for long periods could damage it.)
- Drain water sprinkler supply lines.
- Open the cabinets under sinks in your kitchen and bathrooms to allow heated indoor air to circulate around the water pipes.

- Set your thermostat at a minimum temperature of 55 degrees, especially when you're gone for the day or away for an extended period.
- Let indoor faucets drip; it isn't necessary to run a stream of water.
- Make sure you know where your home's shut-off valve is and how to turn it on and off.
- If you leave town, consider turning off your water at the shut-off valve while faucets are running to drain your pipes. Make sure you turn the faucets off before



you turn the shut-off valve back on.

- If you drain your pipes, contact your electric or gas utility company for instructions on protecting your water heater.

### IF YOUR PIPES FREEZE

- If a pipe bursts and floods your home, turn the water off at the shut-off valve. Call a plumber for help if you can't find the broken pipe or if it's inaccessible. Don't turn the water back on until the pipe has been repaired.
- If the pipe hasn't burst, thaw it out with an electric heating pad, hair dryer, portable space heater, or towel soaked with hot water. Apply heat by slowly moving the heat source toward the coldest spot on the pipe. Never concentrate heat in one spot because cracking ice can shatter a pipe. Turn the faucet on and let it run until the pipe is thawed and water pressure returns to normal.
- Don't use a blowtorch or other open-flame device. They are fire risks and carbon monoxide exposure risks.

### QUESTIONS?

*If you have questions about insurance, call TDI's Consumer Help Line toll-free: 1-800-252-3439 or visit the TDI website: [www.tdi.state.tx.us](http://www.tdi.state.tx.us). Assistance is available in both English and Spanish.*

Your education and your time are valuable assets – so spend wisely.



## Invest in U! Apply Now!

Close to home and work, University of Houston-Clear Lake Pearlman Campus offers you access to a nationally accredited, career-building education without spending a fortune.

281-212-1690  
[www.uhcl.edu/pearland](http://www.uhcl.edu/pearland)  
[plenrollment@uhcl.edu](mailto:plenrollment@uhcl.edu)





Gym Expansion Now Complete!

# BODY EVOLUTION FITNESS CENTER

12155 Shadow Creek Parkway  
Pearland, TX 77584

Huge Aerobics Room • Personal Training

Free Childcare • Free Weights • Weight Machines

Nutritional Counseling • Locker Rooms

Over 35 Aerobics Classes per week

Bootcamps • Cable Machines • Basketball Court



**FREE**  
**7 DAY TRIAL**  
with this ad!


**3 on 3 Basketball Tournaments every other Saturday**



## HOURS OF OPERATION

MONDAY — FRIDAY  
5:00am - 11:00pm

SATURDAY & SUNDAY  
7:00am - 7:00pm



**713.340.0001**

**FitnessInfo@BodyEvolutionNow.com**

# SHADOW CREEK RANCH

## PALM TREE CARE

*Palm Trees are very easy to grow but even easier to kill if you don't know what you are doing.*

*Here are the most common palm tree care mistakes that owners make:*



**1. OVER-WATERING** a new planted palm. You will notice the palm tree leaves turning brown or yellow and falling off quickly without drying first. To avoid this mistake, you need to make sure the palm soil has good drainage. You can do it by adding 30%-50% sand to the soil mix when you plant your palm. A new planted palm tree should be watered every day for the first week.

**2. NOT ENOUGH WATER.** If you don't provide your palm tree with enough water, the tips of the leaves will start turning brown. Most of the palm trees like MOIST and WELL DRAINED soil. To find out if your palm tree is getting enough water, check the moist level of the soil the next day after watering. The soil should be moist down to the root of the palm tree.

**3. ROOT DAMAGE.** Adding fertilizer to the soil when planting a palm is a common mistake. This is almost guaranteed to kill your palm. Palm tree roots are very fragile, and adding fertilizer so close

to the root ball could damage it. A palm tree with damaged roots is more likely to get diseases and die. New planted palms should not be fertilized for the first 3-4 months. Give them some time to establish.

**4. FERTILIZER BURN.** Burning palm tree with a fertilizer by putting it too close to the trunk. It's very easy to burn the palm tree trunk. Once the trunk is damaged it is harder for the palm tree to battle diseases. Keep a 2 feet distance from the trunk when

fertilizing.

**5. NOT FERTILIZING** your palm tree. Your palm tree needs nutrients for a healthy growth. We take vitamins every day to be healthy. Palm trees are like us. They need their vitamins to get stronger, grow faster and fight with pests and diseases. You need to fertilize your palm trees during the warm months 4-5 times a year.

**6. BAD SOIL.** Not providing a palm tree with good soil. Good soil will allow the palm tree root to develop properly, keep the moist so your palm gets enough water and provide good drainage.

Every gardener I know said it killed everything in their garden.

*(Continued on Page 7)*

## HOME REPAIRS & IMPROVEMENTS

*Done Right!*

*Specializing In Residential Remodeling  
Locally Owned & Operated*

**Call Doug for a Free In-home Estimate:**

Office 713-834-2922/Cell 713-826-0299

[america9construction.com](http://america9construction.com)

[dougk@america9construction.com](mailto:dougk@america9construction.com)



- Kitchen & Bath Remodels
- Custom Cabinets
- Solid Granite and Granite Tile Countertops
- Painting & Texturing
- Fences/Decks
- Landscape Timber
- Gazebos/Patio Enclosures/Sheds
- Garages
- Drywall
- Architectural Trim
- Electrical/Plumbing
- Pressure Washing



Find us on facebook!



*References Available  
Upon Request  
Insured & Bonded  
Reasonable Rates*

## STOP FORECLOSURE!

Call: Lois Tink



Certified Short Sale & Listing Specialist



*"I will negotiate with your lender to accept less than the mortgage balance owed, and forgive the difference."*

**(281) 968-8465**

[www.PearlandShortSales.com](http://www.PearlandShortSales.com)

### IMPORTANT NOTICE

Keller Williams Realty/Agent's Name is not associated with the government, and our service is not approved by the government or your lender. Even if you accept this offer and use our service, your lender may not agree to change your loan. If you stop paying your mortgage, you could lose your home and damage your credit rating.





# SHADOW CREEK RANCH

## Palm Tree Care - (Continued from Page 6)

These days it's hard to find good soil, because every soil has fertilizer added. I personally use Premier Pro-Mix, because it provides a superior growing environment for palms by increasing drainage and oxygen.

**7. WRONG CLIMATE.** Planting a palm tree in the climate that is too cold, too hot or too dry. Many gardeners buy palms without checking if they can grow in their climate zone. Tropical palm trees that like warm and humid weather don't do well in the desert, with dry winds in the summer and cold temperatures in the winter.

Just get a different palm tree. There are so many cold hardy palms that can tolerate drought and cold weather. All you need to do, is to check which palms grow in your weather conditions.

**8. SUNBURN.** Planting a very young palm tree in the full sun without providing a cover. The palm leaves will start turning yellow and might look colorless in some areas. If you don't cover your palm, the leaves will begin to dry and turn brown. If your palm tree is from a greenhouse or shade-grown environment, it is NOT USED to full sun. You need to acclimatize it first.

**9. OVER-PRUNING.** I keep seeing articles online that tell people to cut brown part of the leaf because it will save the palm tree from wasting nutrients on the dying leaf. Makes sense right? Wrong. Palm trees need dying leaves for nutrients, and when you cut them off, your palm tree doesn't like it. Palms move nutrients from the older fronds to the new growth. Palm fronds should be cut when they are as close as possible to the trunk. Do NOT remove any fronds that grow at 45 degree angle or greater. If your palm tree looks like a rooster tail, you over-pruned it.

**10. HURRICANE PRUNING.** It is not unusual during hurricane season to get a knock on the door by a team of palm tree professionals, offering to prune your palms. They might say that removing extra weight from your palm tree will save it during hurricane. Makes sense, right? Wrong. Your palm trees need all the leaves they can get to protect the new growing fronds from wind.

*I think this covers the most common mistakes.  
I hope you find this article useful. Have a great day!*

## See Clear

### Residential Window Cleaning



Get your quote in  
2 hours and we will be at your doorstep  
in 24 hours!

Licensed & Bonded  
\* Senior Citizen Discount!

**832.482.2235** [www.seeclearwindowcleaning.net](http://www.seeclearwindowcleaning.net)

## ALL MY SONS

### MOVING & STORAGE



**Local Moving Experts**

- Furniture Quilt-Pad Wrapped at No Extra Charge
- Furniture Placed & Set-up in Your New Home
- Quality Service at Sensible Rates
- Professional Piano Movers
- Courteous & Professionally Trained Personnel
- We DO NOT Require All Drawes to be Emptied
- Complete Packing & Unpacking Services Offered

**Low Storage Rates**

- Modern Warehouse Facility
- Climate Controlled
- Sanitized Private Vaults
- Reliable In-Home Inventory
- Air Conditioned Storage Available

**Long Distance**

- Gauranteed Price & Service
- Direct Service to All Points in USA

**Office/Industrial**

- Corporate Relocation
- Record Retention
- International

Same Day Service  
24 Hours, 7 Days a Week  
Licensed & Insured  
[www.allmysons.com](http://www.allmysons.com)

For Free Friendly Estimates  
& Advice, Call:  
**832-226-5010**

Customer Satisfaction  
is Our #1 Goal!

Let Our Family Move Yours!

  
MC 501473C • USDOT 1296282  
TXDOT 6252035C

All My Sons Moving & Storage of Houston, Inc.  
"Your Neighborhood Movers!"

# SHADOW CREEK RANCH

## COMMON CONCERNS

### ABANDONED & JUNKED VEHICLES

Junked vehicles visible from a public place or public right-of-way are detrimental to the safety and welfare of the general public, tend to reduce the value of private property, invite vandalism, create fire hazards and harm the economic welfare of the city.

### HIGH WEEDS & GRASS

High weeds and grass can become a fire hazard as well as a breeding place for mosquitoes and rodents. Consequently, grass or weeds higher than 12 inches are not in compliance with the city ordinance. Following a notice by mail, property owners will have 10 days to remove the high weeds and grass. If the problem is not resolved, legal action could be taken in Municipal Court.

If the property is vacant, the city can send a mowing contractor to cut the high grass and weeds and issue a bill and administrative service fee to the property owner. A lien can be placed against the property if the bill is not paid.

The city also contracts to remove weeds that have grown higher than 48 inches. This action can be taken without prior notification in the interest of public health and safety. The city will send a bill to the property owner for this service.

### ILLEGAL DUMPING

Illegal dumping harms the environment and creates a danger to public health and safety. Violators caught illegally dumping trash and debris are ticketed immediately. Residents are asked to record license plate numbers of illegal dumper's and report the incident to City Hall immediately, making it easier for the city to catch the culprit. To report illegal dumping call the Investigator at (281) 652-1965.

### TRASH & RUBBISH/OPEN STORAGE

Typical violations of this ordinance include accumulation of trash, wood debris, building and fencing materials, indoor furniture, appliances, tires, car parts, tree limbs and other related materials. Residents are asked to bring

their properties to compliance by removing such items within a designated time frame. If the problem is not resolved, legal action could be taken in Municipal Court.

### FOR ADDITIONAL INFORMATION CONTACT

#### Permits Department

(281) 652-1638

#### Investigator (Fire Marshal's Office)

(281) 652-1965

Please call 281-652-1766 if you have a complaint about code enforcement issues such as health complaints, junk vehicles, dirty swimming pools, bandit signs, dirty streets in new subdivisions, etc. Leave a detailed message and a phone number where you can be reached. The voice mails will be checked daily, and the necessary actions will be taken. Once your complaint is received an officers will investigate your complaint and will respond to you within 48 to 72 hours should you need an update.



**DREAMING OF  
BETTER THINGS?**

**SELL US YOUR CAR!**

There's an easier way to sell your car.  
**WE PAY MORE. WE PAY TODAY.**  
Fast. Easy. Fun. Yes! It's true. Sell Us Your Car!

 **TEXASDIRECTAUTO.COM**



# SHADOW CREEK RANCH

## WASTE MANAGEMENT CONTACT INFORMATION

Contact Phone: (800) 553-1902  
Contact email: [houston-service@wm.com](mailto:houston-service@wm.com)  
Website: <http://www.wm.com>

## CUSTOMER SERVICE

Monday – Friday ..... 8:00am – 5:30pm  
Saturday..... 8:00 am – 12:00 pm  
WM Office Address  
3520 Pansy | Pasadena, TX 77505

## CUSTOMER SERVICE IS CLOSED

..... New Year's Day  
..... Memorial Day  
..... Independence Day  
..... Labor Day  
..... Thanksgiving Day  
..... Christmas Day

This is a the basic holiday schedule provided online by the Waste Management company. It is always a good idea to verify any question you might have about holiday scheduling by contacting them directly through their customer service phone number.

## HOLIDAY SCHEDULE

New Year's Eve ..... Open  
New Year's Day ..... Closed  
*Residential – Pickup next scheduled day.*  
*Commercial – One day delay*  
Day After New Year's Day ..... Open  
Martin Luther King Day ..... Open  
Memorial Day ..... Closed  
*Residential – Pickup next scheduled day*  
*Commercial – One day delay*  
Independence Day..... Open  
*Residential – Pickup next scheduled day.*  
*Commercial – One day delay*  
Labor Day ..... Closed  
*Residential – Pickup next scheduled day.*  
*Commercial is running*  
Thanksgiving Day ..... Closed  
*Residential – Pickup next scheduled day.*  
*Commercial – One day delay*  
Day after Thanksgiving Day..... Open  
Day before Christmas..... Open  
Christmas Day..... Closed  
*Residential – Pickup next scheduled day.*  
*Commercial – One day delay*

## WASTE MANAGEMENT OBSERVES SIX HOLIDAYS A YEAR:

New Year's Day	Labor Day
Memorial Day	Thanksgiving Day
Independence Day	Christmas Day

If your garbage collection day falls on one of these days, service will resume on the next regularly scheduled day. If recycling or yard trimmings pickup falls on one of these days, these services will skip that week and resume the following week. Because there is such a large variety of unique items that might be thrown out, it is likely at some point we all come across something that is questionable for trash pickup. So, make it easy on yourself. Rather than leaving it at curbside and hoping it disappears, give Waste Management a call and their customer service representatives will let you know if and when they can pick it up.

# The New Emergency Room Standard has been Set

- Open 24 hours a day, seven days a week, 365 days a year
- Physicians Board Certified or Board Eligible in Emergency Medicine
- Licensed, free-standing emergency medical care facility

**Any type of emergency, day or night. Ready or not...we are.**

## PEARLAND

3115 Dixie Farm Road, Suite 107  
FM 518 at Dixie Farm Road  
**281-648-9113**

## CYPRESS

17255 Spring Cypress Road, Suite A  
Spring Cypress at Skinner Road  
**281-304-9113**

## ATASCOCITA

19143 W. Lake Houston Parkway  
W. Lake Houston Pkwy at FM 1960  
**281-540-9113**

**txercare.com**



Accredited by the Joint Commission of  
Accreditation of Healthcare Organizations  
for our commitment to excellence.



**T E X A S  
EMERGENCY CARE  
CENTER™**

# SHADOW CREEK RANCH

## NO ANIMAL HUSBANDRY ALLOWED IN SHADOW CREEK RANCH

*Section 21. Animals. No animals of any kind shall be raised, bred, or kept on any Lot or Tract except in compliance with all ordinances of the City of Pearland.*

- **Animal Control-** Dogs and cats must be licensed. Licenses are available at the Animal Control office at 2002 Old Alvin Road. Pearland has a leash law for dogs and cats. 281-652-1970



## Mobile Vet Clinic at Shadow Creek Ranch!

*The convenience you and your pet deserve...*

Mobile Vet Clinic and Shadow Creek Ranch HOA coordinated a property visit on September 20th, 2011 at The Village of Emerald Bay Clubhouse. The Mobile Vet Clinic is an establishment that provides low-cost neighborhood health clinics for large & small animals. The goal and promise is to offer residents convenience and savings; as well as to offer their pets the most up to date services to maintain their well being. We look forward to working with this team next year. Thank You Mobile Vet Clinic!

*For full 2012 schedule,  
please visit [www.themobilevetclinic.com](http://www.themobilevetclinic.com)*



Register for [MyVirtualNeighbor.com](http://MyVirtualNeighbor.com) (FREE)  
"easy sign up to join your Residential Community"

"Here, YOU Create Stronger Communities"

3000 sage luxury community cuts crime by 80% in 20 days. How?  
Check out My Virtual Neighbor...

Log On: [www.MyVirtualNeighbor.com](http://www.MyVirtualNeighbor.com)  
"Meet your neighbors and keep everyone well informed"

Call Today to Schedule  
Your Dental Treatment!  
713-340-2889



[www.MYPEARLANDCOSMETICDENTIST.COM](http://www.MYPEARLANDCOSMETICDENTIST.COM)



**Afroz Burges, D.D.S., P.A.**  
12234 Shadow Creek Pkwy  
Bldg 3, Suite 108  
Pearland, TX 77584

*New Shadow Creek Location  
NOW OPEN!*



**Afroz Burges** D.D.S., P.A.  
FAMILY AND COSMETIC DENTISTRY

15 years of  
experience!

## Professional Tutor

Specialties include:

- Standardized Test Prep.
- Math (including SAT/GRE)
- Literature & Reading
- Writing
- General Science, Biology
- Music Theory, Composition, & Piano
- Proofing/Editing Services

Aaron Alon is a professional teacher and tutor with a doctorate from Rice University and a BA from the University of Chicago.

He has been teaching and tutoring teens and adults for fifteen years.

For more information, including rates and references, please contact Aaron Alon at 281.954.4399 or [aaronalon@gmail.com](mailto:aaronalon@gmail.com).

*Mention this ad for 20% off your first lesson!*

The Current is the official publication of the Shadow Creek Ranch Maintenance Association. At no time will any source be allowed to use The Current's contents, or loan said contents, to others in anyway, shape or form, nor in any media, website, print, film, e-mail, electrostatic copy, fax, or etc. for the purpose of solicitation, commercial use, or any use for profit, political campaigns, or other self amplification, under penalty of law without written or expressed permission from the Shadow Creek Ranch Maintenance Association and Peel, Inc. The information in the newsletter is exclusively for the private use of Shadow Creek Ranch and Peel, Inc.

**DISCLAIMER:** Articles and ads in this newsletter express the opinions of their authors and do not necessarily reflect the opinions of Peel, Inc. or its employees. Peel, Inc. is not responsible for the accuracy of any facts stated in articles submitted by others. The publisher also assumes no responsibility for the advertising content with this publication. All warranties and representations made in the advertising content are solely that of the advertiser and any such claims regarding its content should be taken up with the advertiser.

\* The publisher assumes no liability with regard to its advertisers for misprints or failure to place advertising in this publication except for the actual cost of such advertising.

\* Although every effort is taken to avoid mistakes and/or misprints, the publisher assumes no responsibility for any errors of information or typographical mistakes, except as limited to the cost of advertising as stated above or in the case of misinformation, a printed retraction/correction.

\* Under no circumstances shall the publisher be held liable for incidental or consequential damages, inconvenience, loss of business or services, or any other liabilities from failure to publish, or from failure to publish in a timely manner, except as limited to liabilities stated above.

## NOT AVAILABLE ONLINE

*Do You Have Reason  
to Celebrate?*

We want to hear from you! Email [blopez@amitx.com](mailto:blopez@amitx.com) to let the community know!

## PRIVATE DOG WALKS • DAILY AND OVERNIGHT PET SITTING IN-HOME BOARDING • SMALL PET CARE • AND MUCH MORE



Nobody is more passionate about caring for pets than the folks at Fetch! Pet Care. And we mean any pet – dogs, cats, birds, even the occasional tarantula. Every Fetch! professional is bonded, insured, background-checked and trained. Trust your pet to Fetch! We're in touch with our inner pet.



**10% OFF**  
YOUR FIRST PET CARE SERVICE

**&**

**FREE**  
IN-HOME CONSULTATION

*Mention code 0001. Coupon cannot be combined.*

**Fetch! Pet Care of Pearland**  
**713.568.7304**  
**[pearland@fetchpetcare.com](mailto:pearland@fetchpetcare.com)**  
**<http://pearland.fetchpetcare.com>**



# SHADOW CREEK RANCH

*Our newest Blessing!*

**GREYSON OLIVER THOMPSON**

Born: **July 3, 2011**

Time: **8:28pm**

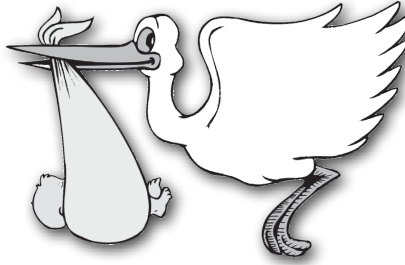
Weight: **7 lbs 8ozs**

Length: **20 inches**

*He is welcomed home by Dad,  
Mom & Big Brother Fredrick II*



## SHADOW CREEK RANCH STORK REPORT



*Please Submit Info and Photo!*

If you have a new arrival (baby or grandbaby), email us the pertinent information along with a photo and we'll publish it in *The Current*. Let your neighbors share in celebrating your happiness! Email info on the arrival of your little one to [blopez@amitx.com](mailto:blopez@amitx.com)

*Congratulations  
Tommy & Wendy Tullo!*

Proud parents would like to announce  
the birth of their daughter

**CAMILLE FRANCESCA  
CONSTINTINA TULLO**

on **September 5, 2011.**

She was **5 lbs 10.5 oz** and **19 inches.**



*Experience Counts!*



**DON'T GO  
IT ALONE!**

**New Pearland  
Location Now Open!**

**DIVORCE | CHILD SUPPORT | ADOPTIONS  
VISITATION | CPS | PATERNITY | WILLS  
ACCIDENTS | PROPERTY PROBATE | INJURIES  
CRIMINAL MISDEMEANORS**

**MEDLIN OFFICE BUILDING  
2404 SOUTH GRAND, STE 215-B | PEARLAND  
281.997.1533 OR 713.647.1289  
704 W. PLANTATION | CLUTE  
979.265.1770**

Not certified by the Texas Board of Legal Specialization

## Bashans Painting & Home Repair

**Commercial/Residential  
Free Estimates**

**281-347-6702**



**281-731-3383 cell**



- Interior & Exterior Painting
- Garage Floor Epoxy
- Hardi Plank Installation
- Custom Staining
- Wood Replacement
- Roofing
- Sheetrock Repair
- Gutter Repair/Replacement
- Interior Carpentry
- Faux Painting
- Cabinet Painting
- Door Refinishing
- Wallpaper Removal and Texturizing
- Window Installation
- Pressure Washing
- Trash Removal
- Fence Repair/Replacement
- Ceiling Fan/Light Fixtures

**References Available • Fully Insured  
NO PAYMENT UNTIL COMPLETION  
[bashanspainting@earthlink.net](mailto:bashanspainting@earthlink.net)**

# **WANTED**

\_\_\_\_ BY PEEL INC. \_\_\_\_

ENERGETIC SALES REPRESENTATIVES

 **REWARD** 

COMMISSION BASED INCOME

WANTED FOR WORKING FROM HOME,  
EARNING EXTRA INCOME, AND  
SELLING ADS IN YOUR NEWSLETTER

VISIT [WWW.PEELINC.COM](http://WWW.PEELINC.COM) FOR MORE INFORMATION

888-687-6444    [www.PEELinc.com](http://www.PEELinc.com)

# REACHING YOUR NEIGHBORS

*and many others...*

- Atascocita CIA
- Blackhorse Ranch
- Bridgeland
- Chelsea Harbour
- Coles Crossing
- Copperfield
- Cypress Mill
- Cypress Point
- Eagle Springs
- Enchanted Valley
- Fairfield
- Fairwood
- Harvest Bend The Village
- Kleinwood
- Lakemont
- Lakes of Fairhaven
- Lakes of Rosehill
- Lakes of Savannah
- Lakes on Eldridge
- Lakes on Eldridge North
- Lakewood Grove
- Legends Ranch
- Longwood
- North Lake Forest
- Riata Ranch
- Riverpark on the Brazos
- Shadow Creek Ranch
- Silverlake
- Southage
- Steeplechase
- Stone Forest
- Stone Gate
- Summerwood
- Village Creek
- Villages of NorthPointe
- Willowbridge
- Willowlake
- Willow Pointe
- Winchester Country
- Winchester Trails
- Windermere Lakes
- Wortham Villages

**FOR ADVERTISING INFORMATION**

*Call Today 1-888-687-6444*

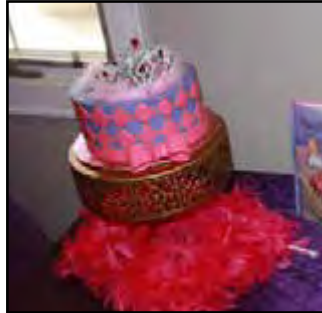
www.PEELinc.com  
advertising@PEELinc.com

**PEEL, INC.**  
community newsletters



## HAPPY BIRTHDAY LAUREN

Lauren's parents celebrated her birthday this year at The Village Of Emerald Bay Clubhouse 11814 N. Clear Lake Loop. We wish Lauren many more wonderful birthdays!



**Brilliant Energy = Seriously LOW Electricity Rates**

**Brilliant Energy's Electricity Rates Challenge The Rates of Every Other Electricity Provider in Texas!**

**Lock-in a low electricity rate for up to 3-years!**

**Easy Online Sign-Up at [BrilliantElectricity.com](http://BrilliantElectricity.com)  
USE "NEIGHBORHOOD NEWSLETTER" AS REFERRAL**



**Brilliant Energy is recommended by Texas Energy Analyst, Alan Lammey the host of the 'Energy Week' radio show on NewsTalk 1070 KNTH!**

**Ask the "Energy Analyst":  
281-658-0395**

**Great Business Rates Too!**

Brilliant Energy Texas PUC #10140





## HOLIDAY DECORATION SAFETY TIPS

Before crawling up on the roof to string the Christmas lights, you need to know that every year, hospital emergency rooms treat about 12,500 people for injuries, such as falls, cuts and shocks, related to holiday lights, decorations and Christmas trees, according to the U.S. Consumer Product Safety Commission (CPSC). In addition, warns CPSC, candles start about 11,600 each year, resulting in 150 deaths, 1,200 injuries and \$173 million in property loss. Christmas trees are involved in about 300 fires annually, resulting in 10 deaths, 30 injuries and an average of more than \$10 million in property loss and damage.

### TREES

When purchasing an artificial tree, look for the label "Fire Resistant." Although this label does not mean the tree won't catch fire, it does indicate the tree will resist burning and should extinguish quickly.

When purchasing a live tree, check for freshness. A fresh tree is green, needles are hard to pull from branches and do not break when bent between your fingers. The trunk butt of a fresh tree is sticky with resin, and when tapped on the ground, the tree should not lose many needles. When setting up a tree at home, place it away from fireplaces and radiators. Because heated rooms dry live trees out rapidly, be sure to keep the stand filled with water. Place the tree out of the way of traffic and do not block doorways.

### LIGHTS

Indoors or outside, use only lights that have been tested for safety by a recognized testing laboratory, which indicates conformance with safety standards. Use only lights that have fused plugs. Check each set of lights, new or old, for broken or cracked sockets, frayed or bare wires, or loose connections, and throw out damaged sets. Always replace burned-out bulbs promptly with the same wattage bulbs. Use no more than three standard-size sets of lights per single extension cord. Make sure the extension cord is rated for the intended use. Never use electric lights on a metallic tree. The tree can become charged with electricity from faulty lights, and a person touching a branch could be electrocuted.

Before using lights outdoors, check labels to be sure they have been certified for outdoor use. Stay away from power or

feeder lines leading from utility poles into older homes. Fasten outdoor lights securely to trees, house walls, or other firm supports to protect the lights from wind damage. Use only insulated staples to hold strings in place, not nails or tacks. Or, run strings of lights through hooks (available at hardware stores).

Turn off all holiday lights when you go to bed or leave the house. The lights could short out and start a fire. Use caution when removing outdoor holiday lights. Never pull or tug on lights - they could unravel and inadvertently wrap around power lines.

Outdoor electric lights and decorations should be plugged into circuits protected by ground fault circuit interrupters (GFCIs). Portable outdoor GFCIs can be purchased where electrical supplies are sold. GFCIs can be installed permanently to household circuits by a qualified electrician.

### DECORATIONS

Use only non-combustible or flame-resistant materials to trim a tree. Choose tinsel or artificial icicles of plastic or nonleaded metals. Leaded materials are hazardous if ingested by children.

Never use lighted candles on a tree or near other evergreens. Always use non-flammable holders, and place candles where they will not be knocked down. In homes with small children, take special care to avoid decorations that are sharp or breakable, keep trimmings with small removable parts out of the reach of children to avoid the child swallowing or inhaling small pieces, and avoid trimmings that resemble candy or food that may tempt a child to eat them.

Wear gloves to avoid eye and skin irritation while decorating with spun glass "angel hair." Follow container directions carefully to avoid lung irritation while decorating with artificial snow sprays.

### FIREPLACES

Use care with "fire salts," which produce colored flames when thrown on wood fires. They contain heavy metals that can cause intense gastrointestinal irritation and vomiting if eaten. Keep them away from children. Do not burn wrapping papers in the fireplace. A flash fire may result as wrappings ignite suddenly and burn intensely.

*[Source: U.S. Consumer Product Safety Commission]*

## NATIONAL NIGHT OUT

IN BRIARWOOD SOUTH  
AT SHADOW CREEK RANCH

Scott Richard, Cathy Spacek, sponsored the event at the DR Horton model along with Resident Lisa Mondal and Angela Graham. The Pearland Firemen, Police, Brazoria County Constable Fred Kanter, City Councilmen Scott Sherman, Kevin Cole, and various other City of Pearland Officials stopped by to visit and share great information on Safety! Many neighbors and lots of great food and fun! Along plans made for a Halloween Block Party! Briarwood South Neighbors know how to have a good time!





**PEEL, INC.**

308 Meadowlark St. South  
Lakeway, TX 78734

PRSR STD  
U.S. POSTAGE  
PAID  
PEEL, INC.

SCR



***From the \$20,000s to the  
\$1,000,000s...***



***From Investment Properties  
to Mansions...***

**PearlandSamTeam.com**

**36+ Years  
of Experience  
and over  
6500 Homes  
SOLD!**



**832-200-5656**

**SamF@Remax.net**

**Sam**

**FERRERI**

**Top  
Realty**



**Career blues?  
www.BecomeATopAgent.com**

Each Office Independently Owned & Operated.

Equal Housing Opportunity Marketing 713.545.1309