



APRIL 2013

Official Publication of Legends Ranch Property Owners Association

VOL 7, ISSUE 4

NOTES FROM YOUR BOARD OF DIRECTORS

Our gates and barriers have presented quite a challenge recently. The Board of Directors is taking action to help improve the efficiency, reliability, and functionality of our gate system(s).

One example is the problem of malfunctioning barrier arms. Over the past couple of months, we have had multiple incidents where guests and visitors have managed to strike one of the barriers. In February, three of the Directors spent time at the guardhouse during evening rush hour to assess the situation. While minor adjustments were made to the gate system, we found the biggest risk to the EZTag lane was impatient drivers ignoring the stop sign. We saw many instances of "piggy-backing" on both the EZTag and card access lanes. When the barrier arm is struck it generally causes a malfunction. These outages are highly preventable and impact all of us.

It is worth noting that residents (and visitors) are financially responsible for damage caused to any POA owned property (including these gates and barriers). The camera system we have in place does catch these events and are reviewed to help determine cause and liability. Most of these outages/issues could be avoided if we would wait another 5-10 seconds and let the gates do the job they were designed to do.

Please STOP at the STOP sign and proceed slowly through these automated barriers. It won't cost you but a few seconds more, but can save you money and irritation.

-Eric Garrington

Legends Ranch Teen Fit Club

Inspired by the Biggest Loser's new season with a focus on childhood and teen obesity, Lena Nel took the Challenge America to heart. Two facts hit her the hardest: 1) Approximately 17% (or 12.5 million) of children and adolescents aged 2—19 years are obese. 2) Since 1980, obesity prevalence among children and adolescents has almost tripled. Having teens of her own who tend to be more sedentary than necessary, she made up her mind that something has to change. As a working parent, the past several years were difficult getting her daughters involved in outside activities. It was more important to spend dinner time at home than running from place to place and picking up fast food. It was a tradeoff - they have a close knit family, but not a lot of outside activities.

After thinking about putting her teens in activities, she realized she had missed the boat to enter them in sports like gymnastics or volleyball as teens because their skills would be embarrassingly below par. To give them a gym membership, in addition to the cost, would be asking them to interact with all adult classes. Not to mention, she herself has never figured out how to really get an effective work out in a gym, especially by herself.

An additional problem isn't what activity, as much as with whom can they be active? Who wants their parents to be their only fitness partner? Not her daughters and probably not your teen either. She had to develop a solution.

(Continued on Page 3)

LEGENDS RANCH

IMPORTANT NUMBERS

Property Tax

Montgomery County Tax	936-539-7897
Conroe ISD	936-709-7751
Montgomery MUD #89	713-932-9011

Your Community Homeowners Association

RealManage	866-473-2573
Legends Ranch Info Center	281-681-9750
Legends Ranch SplashPad	281-419-2130
Gate Attendant Office.....	281-296-0433

Police & Fire

Emergency	911
Montgomery Sheriff	936-760-5800
Pct. 3 Constable Office	281-364-4211
S. Montgomery Co. Fire Dept. Non-Emergency.....	281-363-3473
Montgomery County EMS Non-Emergency	936-441-6243
Crime Stoppers	713-222-TIPS
Poison Control.....	800-222-1222
Texas DPS	713-681-1761

Utilities

Electricity (TXU).....	800-368-1398
Electricity (TXU New Service)	281-441-3928
Electricity (Centerpoint)	713-207-2222
Gas (Centerpoint).....	713-659-2111
Water/Municipal Oper. & Consulting	281-367-5511
Canyon Gate Connect	281-296-9584
Best Trash	281-313-2378
Street Light Outages.....	713-207-2222
Cable/Internet/Phone...COMCAST	713-341-1000

Public Services

Local US Post Office.....	281-419-7948
Toll Road EZ Tag.....	281-875-3279
Voters Registration.....	936-539-7843
Vehicle Registration	281-292-3325
Drivers License Information	936-442-2810
Montgomery County Animal Control	936-442-7738
Montgomery Chamber	281-367-5777

Area Hospitals

Memorial Hermann	281-364-2300
St. Luke's	832-266-2000
Conroe Medical Center	281-364-7900

Conroe ISD

Birnam Woods Elementary	936-709-7751
Cox Intermediate	281-863-4200
Cox Intermediate	281-465-3200
York Junior High	832-592-8600
Oak Ridge High	832-592-5300

Private/Parochial

First Baptist Church	936-756-6622
Sacred Heart Catholic Church	936-756-3848
St. Edward Catholic.....	281-353-4570
St. James Episcopal Day	936-756-4984

BOARD & MANAGEMENT CO.

Management Co.: Real Manage

Customer Service (866)473-2573
..... service@realmanage.com

Board Members:

Sebastien Moulin..... ilovelegendsranch@yahoo.com
Eric Garrington..... ericlrhoa@gmail.com
Carol Ayre..... carol.ayre40@yahoo.com
Eric Green..... lrspringtx@gmail.com
Greg Fleischman gregfleischman@gmail.com

NEWSLETTER INFORMATION

Editor

Carol Ayre..... carol.ayre40@yahoo.com

Publisher

Peel, Inc. www.PEELinc.com, 888-687-6444
Advertising.....advertising@PEELinc.com, 888-687-6444


Heritage
POOLS & LANDSCAPING
281-896-5061
All you have to do is swim!



Weekly Pool Service
All Pool Repairs, Remodeling and Resurfacing
Give us a call for a FREE Estimate
Contact us at HeritageLandscapingInc.com

Teen Fit Club - (Continued from Cover Page)

Lena decided to host a Teen Fit Club. Meet her at 10am on Saturday, March 16, at the basketball court and bring your teen between the ages of 13 and 19 to begin experiencing how much fun “getting busy” can be. There will be a waiver to sign by a parent. Each week will be a different experience of exercise. There will be boot camp style, basketball drills, Frisbee playing and tennis court workouts. But the exercise is only one of the goals of the Fit Club. Twenty minutes each week will be dedicated to discussing healthy lifestyle and food choices. Finally, each teen will share their contact information with each other and be strongly encouraged to call one member each week to be active with, whether repeating a workout, grabbing a couple of tennis racquets or just going for a fast walk around the lake.

Change has to happen, our teens need to know there is more than T.V, games and the Internet, and reading, while great, isn't an alternative to activity.

Marlena Nel, B.S., ATP

SAFE DECK CLEANING

If you need to remove dirt and mildew from your deck this spring, look for a cleaner with sodium percarbonate as the active ingredient, such as Penofin Pro-Tech Cleaner. This will be safer than those that rely on oxalic acid or bleach (sodium hypochlorite) to do the job.

For rust stains, oxalic acid works best. Bleach cleans well but it damages planks, creates unpleasant toxic fumes, causes hardware to rust and breaks down the lignins holding wood together.

Even if you choose sodium percarbonate, it's still a good idea to avoid its contact with kids, pets or plants. Saturate the ground around plants with water before you start cleaning the deck to prevent them from taking up much of the solution through their roots. And cover them with plastic so the solution doesn't get on the leaves. (Don't forget to remove it when you're done, and avoid doing this on a hot, sunny day. Plants could get too hot under the plastic.)

Copied from the magazine “Garden Gate”, April 2013



ADULTS ARE JUST
KIDS GROWN UP

With over \$2 billion sold and over 2000 cars to choose from,
nobody does it better than Texas Direct Auto.
We make buying and selling fun!

 TEXASDIRECTAUTO.COM

LEGENDS RANCH

The Living Legends of Legends Ranch: (Better known as "The Seniors")

As stated in the last newsletter, we were quiet in January, but we are making up for it now! On February 9th we celebrated "Mardi Gras" in our own way: in Texas, loudly, dressed for the occasion, and even with a short parade in the street. We had great fun starting off 2013 this way. This is our 3rd annual celebration of Mardi Gras at the family home of Marie Prevost. As we did last year, we figured out a way to not disturb the neighbors: invite them to the celebration! It works!

We began our regular meetings on the 3rd Friday of each month, planning things to do and visiting with each other and a few new members. We may move or cancel the April meeting because of a trip to Galveston that day to eat dinner and see the comedian Joanne Robertson at The Grand.

This month we also tried to go see an early movie and have lunch, which we try to do most every month. We got all settled in our movie seats, and waited for the movie to begin. And waited... waited... Finally they told us the equipment had broken, offered to let us see another movie right then, and gave us our money back and a free pass to another one. What a deal! So we just went to lunch and had a great time.

Spring is here. Let's all enjoy something outdoors (besides working in our yards) before it gets too hot. Anyone who would like to join "The Seniors" here in Legends Ranch, please call me at 281-651-2593, and leave a message if I'm out having fun with the others.

-Jerrie Sanders



Make an impact.

Call today to reserve this space.

PEEL, INC.

COMMUNITY NEWSLETTERS

512-263-9181



UPDATE ON FENCING

On Monday night at a Special Meeting, the board approved a bid package for fence/wall issues in three places. The sorry wooden fence behind the drill site is going to the great campfire in the sky! In its place will be a concrete wall product that looks similar to what is around most of the community now.

In addition, the same product will be used for walls located at the termination of Sullivan Oaks and Haines Creek Drive. These roads were originally designed to lead to the final section of Legends Ranch that is now a part of Legends Run.

Finally, along Standing Rock there is a 300 linear feet penetration that will be closed with heavy duty chain link fence with privacy netting. This will provide a long term, temporary solution until the lots are built out and permanent fencing is built.

This was a direct result of the involvement of homeowners at the last board meeting. Going to the meetings matters. This board is committed to making sure that Legends Ranch is the

best place in south Montgomery County to live. So come out and get involved!!! There are a lot of good things happening!!!

In addition, the same product will be used for walls located at the termination of Sullivan Oaks and Haines Creek Drive. These roads were originally designed to lead to the final section of Legends Ranch which is now a part of Legends Run.

Finally, along Standing Rock there is a 300 LF penetration that will be closed with heavy duty chain link fence with privacy netting. This will provide a long term temporary solution until the lots are built out and permanent fencing is built.

This was a direct result of the involvement of homeowners at the last board meeting. Going to the meetings matters. This board is committed to making sure that Legends Ranch is the best place in south county to live. So come out and get involved!!! There are a lot of good things happening!!!

-Eric Garrington

SEND US YOUR *Event Pictures!!*

Do you have a picture of an event that you would like to run in this newsletter? Send it to us and we will publish it in the next issue.

Email the picture to carol.ayre40@yahoo.com. Be sure to include the text that you would like to have as the caption.

Pictures will appear in color online at www.PEELinc.com.



LEGENDS RANCH

NOTICE OF MEETING - MONTGOMERY COUNTY MUNICIPAL UTILITY DISTRICT NO. 89

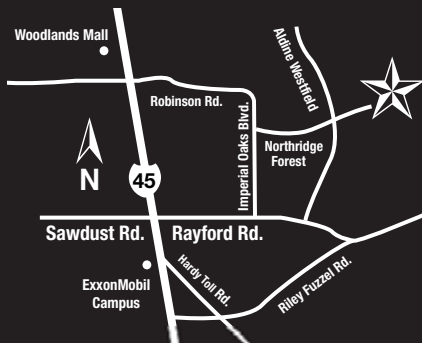
Thursday, April 11, 2013, 6:30 p.m.,
at the offices of Municipal Operations & Consulting, Inc.
312 Spring Hill Drive, Suite 100, Spring, Texas 77386.
This meeting is being held locally for the Residents of
the District.



"It is a greater act of faith to plant a bulb
than to plant a tree."
-Clare Leighton



THE NATURAL CHOICE *The Falls at Imperial Oaks*



LOCATION:

- 6 minutes to Woodlands Mall
- 15 minutes to IAH
- 30 minutes to Downtown

The Falls at Imperial Oaks is the natural choice for your next home with State-of-the-Art Fitness Facilities, Water Park, Splash Pad, Walking Trails and on-site elementary school.

DAVID WEEKLEY HOMES

Edgewater – from the \$220s
281-249-7727

Holly Creek – from the \$290s
281-249-7725

Windsong Manor – from the \$260s
281-249-7812

LENNAR HOMES

Summit Springs – from the \$160s
281-419-4748

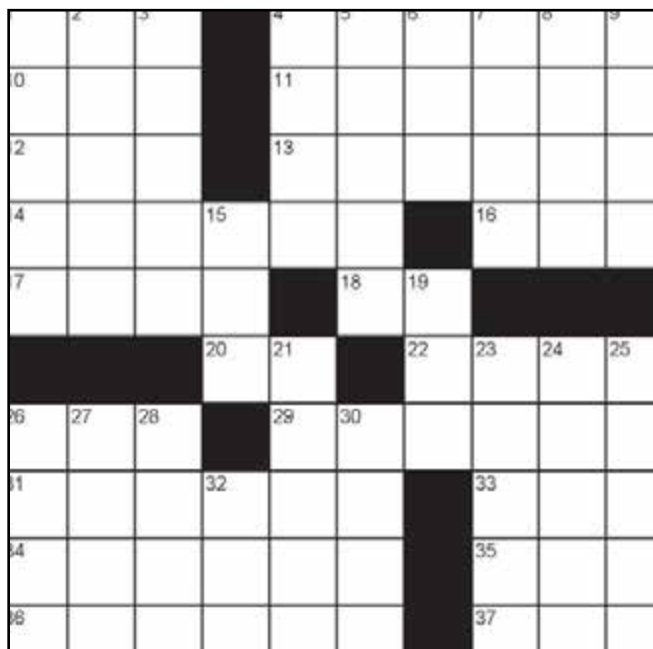


CONROE
INDEPENDENT SCHOOL DISTRICT
Committed to Excellence

www.fallsatimperialoaks.com



CROSSWORD PUZZLE



ACROSS

1. Can
4. At sea
10. Maturity
11. Apt
12. Winter mo.
13. Cactus drug
14. Choose (2 wds.)
16. Long time
17. Tush
18. You
20. Hey!
22. Baby's "ball"
26. Fortify
29. Groove
31. Relating to the laity
33. Loose gown worn at mass
34. Accounts
35. Central Intelligence Agency
36. Stacking card game
37. Critical

DOWN

1. College field of study
2. Open mouthed
3. Rumormonger
4. Dog food brand
5. Zealous
6. Repose
7. Double-reed instrument
8. Singing voice
9. Adolescent
15. Saute
19. Move away
21. Toothbrush brand
23. Taken __ (shocked)
24. Negate
25. Treed (2 wds.)
26. Alack's partner
27. Standing
28. Short
30. Too
32. Hat

View answers online at www.peelinc.com

© 2006. Feature Exchange



BRADBURY BROTHERS
HEATING & AIR-CONDITIONING

OFFERING PREMIER
CUSTOMER SERVICE
TO LEGENDS RANCH

“We Take Care of Your Air”



CALL NOW!

And Enjoy
These
Savings

281-651-5484

AIR CONDITIONING & HEATING

**REPAIRS • MAINTENANCE
INSTALLATIONS**

\$50 OFF

REPAIRS

OF \$200 OR MORE

With coupon only. Not to be combined
with any other offers or specials.

\$59.00

TUNE-UP

(REG. \$89)

With coupon only. Not to be combined
with any other offers or specials.

www.BradburyBrothers.com

DIRECTV is rolling out the RED CARPET



VIP

PRICING

exclusively for
**Legends Ranch
residents**

DIRECTV

Prices starting at
\$29.99

Free 5 tuner Genie HD/DVR

Instant rebate on all packages

**Record, watch and playback in HD
from any room**

FREE Installation

Up to 3 FREE additional HD client boxes

**FREE HBO/Cinemax/Starz/ Showtime
for 3 months**

Mention this ad for your VIP deal. CALL NOW!

1-888-799-0512



LEGENDS RANCH

SUDOKU

8		3				9		
								1
	9	5						6
			6		2			
								7
	1	4	9					8
	4						9	
		1			7	2		3
6	7		3					

The goal is to fill in the grid so that every row, every column, and every 3x3 box contains the digits 1 through 9. Each digit may appear only once in each row, each column, and each 3x3 box.



Advertise
Your Business
Here!
888.687.6444

BUSINESS CLASSIFIEDS

RAINCO IRRIGATION SPECIALIST: Commercial & Residential. Backflow Testing, Drainage, Irrigation (Sprinkler) System, Design & Installation, Service & Repair, Rainbird – Hunter. Fully Insured. Lic. # 9004 & 9226. Call 713-824-5327.

Classified Ads

Personal classifieds (one time sell items, such as a used bike...) run at no charge to Legends Ranch residents, limit 30 words, please e-mail legendsranch@peelinc.com



UNIVERSITY of HOUSTON
NORTHWEST CAMPUS

DID YOU KNOW...

University of Houston is the **ONLY** Tier One
Public Research University
in the Greater Houston Area?

Complete Your Degree In:

- Communications (B.A.)
- Mechanical Engineering Technology (B.S.)
- Organizational Leadership & Supervision (B.S.)
- Psychology (B.A., B.S.)
- Retailing & Consumer Science (B.S.)
- Supply Chain & Logistics (B.S.)
- Global Business (Minor)

832-842-5700 UH.EDU/NORTHWEST NORTHWEST@UH.EDU
FACEBOOK.COM/UHNORTHWEST @UHNORTHWEST

A black and white photograph of a woman from behind, wearing a cowboy hat, a plaid shirt, and jeans, looking out a large window. The text is overlaid on the right side of the image.

**LOSE
YOURSELF.
LITERALLY.
WE HAVE
220 ACRES.**

TripAdvisor named Travaasa® Austin a Top 10 Destination Spa.
This spring, enjoy true farm-to-table meals from the new Travaasa Farm.

1.888.364.4535 or visit travaasa.com

ADVENTURE / CULINARY / CULTURE / FITNESS / SPA & WELLNESS



TRAVAASA®
EXPERIENTIAL RESORTS
Austin

LEGENDS RANCH

At no time will any source be allowed to use the Legends Ranch Community Newsletter contents, or loan said contents, to others in anyway, shape or form, nor in any media, website, print, film, e-mail, electrostatic copy, fax, or etc. for the purpose of solicitation, commercial use, or any use for profit, political campaigns, or other self amplification, under penalty of law without written or expressed permission from the Legends Ranch Property Owners Association and Peel, Inc. The information in the newsletter is exclusively for the private use of Legends Ranch residents only.

DISCLAIMER: Articles and ads in this newsletter express the opinions of their authors and do not necessarily reflect the opinions of Peel, Inc. or its employees. Peel, Inc. is not responsible for the accuracy of any facts stated in articles submitted by others. The publisher also assumes no responsibility for the advertising content with this publication. All warranties and representations made in the advertising content are solely that of the advertiser and any such claims regarding its content should be taken up with the advertiser.

* The publisher assumes no liability with regard to its advertisers for misprints or failure to place advertising in this publication except for the actual cost of such advertising.

* Although every effort is taken to avoid mistakes and/or misprints, the publisher assumes no responsibility for any errors of information or typographical mistakes, except as limited to the cost of advertising as stated above or in the case of misinformation, a printed retraction/correction.

* Under no circumstances shall the publisher be held liable for incidental or consequential damages, inconvenience, loss of business or services, or any other liabilities from failure to publish, or from failure to publish in a timely manner, except as limited to liabilities stated above.

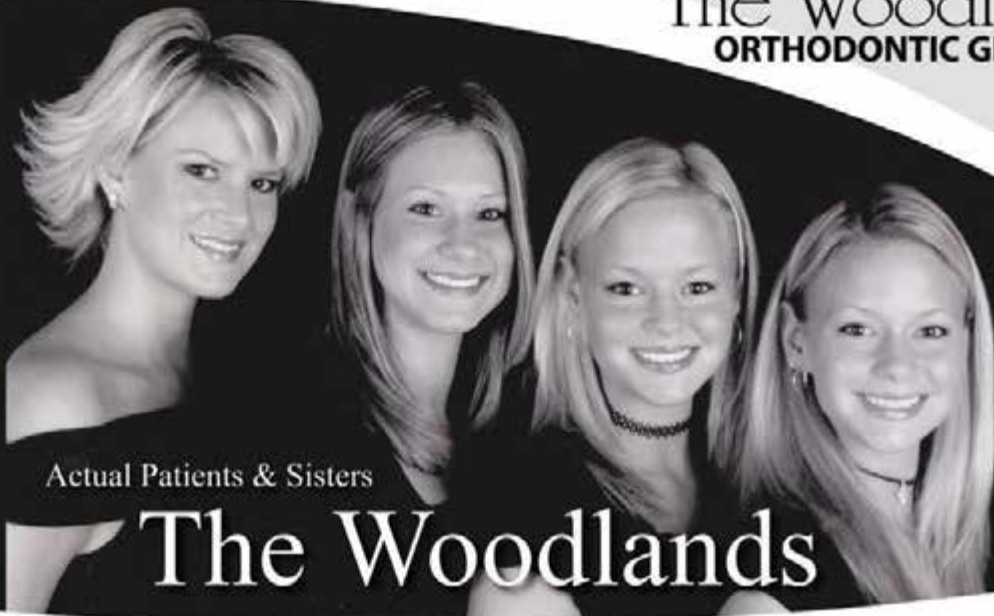
NOT AVAILABLE ONLINE

WWW.WOODLANDSBRACES.COM



**The Woodlands
ORTHODONTIC GROUP**

Braces.....
a gift that lasts a lifetime



Actual Patients & Sisters

The Woodlands

Spring Office - 281-367-2211 • 2211 Rayford Rd. Ste 117
(Kroger Shopping Center located at entrance to Imperial Oaks)

GATEWAY BAPTIST CHURCH

Come & Experience
"The Joy of Belonging"

WORSHIP SUNDAYS AT 10:30 A.M.
WEDNESDAYS AT 7 P.M.
BIBLE STUDY SUNDAYS AT 9:15 A.M.

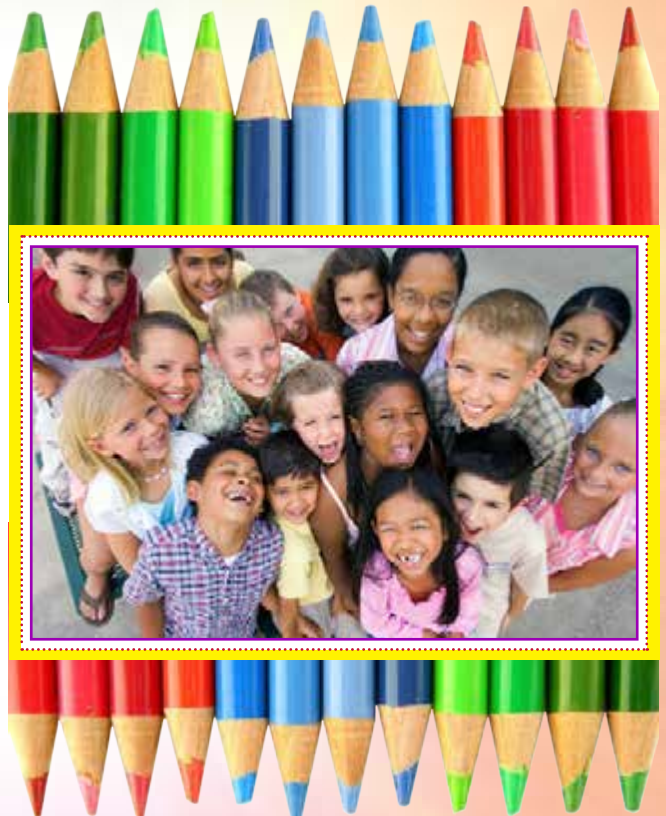
Gateway To Learning Christian Childcare Centers

Full Time Program

Currently Enrolling for Summer Care
6 weeks to 4th grade
Monday-Friday 6:30 a.m. - 6 p.m.
Field Trips for Schoolers
Themed Activities Day
gatewaytolearning@yahoo.com
281-466-8080

Mother's Day Out Part Time Program

New For 2013-2014
2, 3 & 5 day programs offered
9 a.m. - 2 p.m.
Themed Activities Day
mdo@gbcspring.org
281-466-8080



281.363.4500 • 2930 RAYFORD ROAD
WWW.DISCOVERGATEWAY.COM



PEEL, INC.

308 Meadowlark St. South
Lakeway, TX 78734

PRSR STD
U.S. POSTAGE
PAID
PEEL, INC.

LR

TARGET YOUR
CUSTOMERS



PEEL, INC.
community newsletters

www.peelinc.com
512.263.9181