



BEE CAVE *Messenger*

VOLUME 4, ISSUE 6

JUNE 2013

NEWSLETTER FOR THE RESIDENTS OF THE BEE CAVE AREA



follow us on
facebook

[Facebook.com/BeeCaveMessenger](https://www.facebook.com/BeeCaveMessenger)

Sold!

4153 Westlake Dr.

Exquisite Custom Gated Estate with stunning views of Austin Country Club Golf Course ~ Entertainer's dream with an outdoor living area featuring a swimming pool, cabana & kitchen ~ Luxurious master suite with sitting area and a large walk in closet ~ Beautiful family home with sports court and dog run



Finding views that *Move* our clients.



Tosca Gruber *CRS, GRI, ABR, CMRS*

512-789-LAKE (5253) Mobile | 512-328-2559 Fax
luxuryhomes@austin.rr.com

609 Castle Ridge RD., Suite #440
www.CallTosca.com

ADVERTISING INFO

Please support the advertisers that make the Bee Cave Messenger possible. If you are interested in advertising, please contact our sales office at 512-263-9181 or advertising@peelinc.com. The advertising deadline is the 8th of the month prior to the issue.

ARTICLE INFO

The Bee Cave Messenger is mailed monthly to all Bee Cave area residents. Residents, community groups, churches, etc. are welcome to include information about their organizations in the newsletter. Personal news for the Stork Report, Teenage Job Seekers, recipes, special celebrations, and birthday announcements are also welcome.

To submit an article for the Bee Cave Messenger please email it to beecave@peelinc.com. The deadline is the 15th of the month prior to the issue.

IMPORTANT NUMBERS

EMERGENCY NUMBERS

EMERGENCY	911
Fire.....	911
Ambulance.....	911
Police Department	512-314-7590
Sheriff – Non-Emergency.....	512-974-0845
Travis County ESD No.6/Lake Travis Fire Rescue	
Administration Office.....	512-266-2533
Travis County Animal Control.....	512-972-6060

SCHOOLS

Lake Travis ISD	512-533-6000
Lake Travis High School.....	512-533-6100
Lake Travis Middle School.....	512-533-6200
Lake Travis Elementary.....	512-533-6300
Hudson Bend Middle School	512-533-6400
Lake Pointe Elementary.....	512-533-6500
Lakeway Elementary	512-533-6350
Serene Hills Elementary	512-533-7400
Bee Cave Elementary.....	512-533-6250

UTILITIES

Travis County WCID # 17.....	512-266-1111
Lakeway MUD	512-261-6222
Hurst Creek MUD.....	512-261-6281
Austin Energy	512-322-9100
Pedernales Electric.....	888-554-4732
Texas Gas Service	
Custom Service.....	1-800-700-2443
Emergencies.....	512-370-8609
Call Before You Dig.....	512-472-2822
AT&T	
New Service.....	1-800-464-7928
Repair.....	1-800-246-8464
Billing.....	1-800-858-7928
Time Warner Cable	
Customer Service.....	512-485-5555
Repairs.....	512-485-5080
Austin/Travis County Hazardous Waste	512-974-4343

OTHER NUMBERS

Bee Cave City Hall.....	512-767-6600
Bee Cave Library	512-767-6620
Municipal Court	512-767-6630
Lake Travis Postal Office.....	512-263-2458
City of Bee Cave	www.beecavetexas.com

NEWSLETTER PUBLISHER

Peel, Inc.	512-263-9181
Editor.....	beecave@peelinc.com
Advertising.....	advertising@peelinc.com

Now Accepting Summer Camp Enrollment!



The Children's Center Of Austin

Offering 3 Convenient Austin Locations!

Steiner Ranch
4308 N. Quinlan Park Road | Suite 100
Austin, TX 78732 | 512.266.6130

Jester
6507 Jester Boulevard | Building 2
Austin, TX 78750 | 512.795.8300

Bee Caves
8100 Bee Caves Road | Austin, TX 78746
512.329.6633



"Camp Amazing Race" is a flexible 11 week summer camp. Space is limited; sign up today at one of our three schools.

..... www.childrenscenterofaustin.com

Table of Contents

The Bee Cave Messenger is a private publication published by Peel, Inc. It is not sanctioned by any homeowners association or organization, nor is it subject to the approval of any homeowners association or organization, nor is it intended, nor implied to replace any publication that may be published by or on behalf of any homeowners association or organization. At no time will any source be allowed to use the Bee Cave Messenger contents, or loan said contents, to others in anyway, shape or form, nor in any media, website, print, film, e-mail, electrostatic copy, fax, or etc. for the purpose of solicitation, commercial use, or any use for profit, political campaigns, or other self amplification, under penalty of law without written or expressed permission from Peel, Inc. The information in the newsletter is exclusively for the private use of Peel, Inc.

DISCLAIMER: Articles and ads in this newsletter express the opinions of their authors and do not necessarily reflect the opinions of Peel, Inc. or its employees. Peel, Inc. is not responsible for the accuracy of any facts stated in articles submitted by others. The publisher also assumes no responsibility for the advertising content with this publication. All warranties and representations made in the advertising content are solely that of the advertiser and any such claims regarding its content should be taken up with the advertiser.

* The publisher assumes no liability with regard to its advertisers for misprints or failure to place advertising in this publication except for the actual cost of such advertising.

* Although every effort is taken to avoid mistakes and/or misprints, the publisher assumes no responsibility for any errors of information or typographical mistakes, except as limited to the cost of advertising as stated above or in the case of misinformation, a printed retraction/correction.

* Under no circumstances shall the publisher be held liable for incidental or consequential damages, inconvenience, loss of business or services, or any other liabilities from failure to publish, or from failure to publish in a timely manner, except as limited to liabilities stated above.

AROUND BEE CAVE

- 5 Eggfest Winners from Rocky Creek
- 6 Lupine Lane
- 8 June Events at the Hill Country Galleria
- 9 2013 Independence Day Festival
- 10 Fun Summer Events at Bee Cave Public Library
- 11 LRMC Has Four Doctors Nominated for Prestigious Award

SCHOOL NEWS

- 12 LTHS AP Art Student Awarded Local Scholarship
- 12 LTEF Prize Patrol Awards \$227,920 in Grant Funding

NEWS YOU CAN USE

- 14 Calling All Artists
- 15 Lack of Advance Planning Causes Constant Low Lake Levels

BUSINESS SECTION

- 16 Seven Business Networking Groups in the Area

IN EVERY ISSUE

- 18 Classifieds
- 18 Teenage Job Seekers



What can BROWN paint for you?

INTERIOR/EXTERIOR PAINTING
RESIDENTIAL & COMMERCIAL
GENERAL REPAIRS/CARPENTRY
SHEETROCK REPLACEMENT
TEXTURING & FAUX FINISHES
CUSTOM STAIN & VARNISH

Why should BROWN paint for you?

FREE ESTIMATES
BONDED & INSURED
EXCELLENT REFERENCES
FAMILY-OWNED & OPERATED
MEMBER OF TRCC

10% OFF OUR SERVICES
*(when you mention this ad, one per customer)

www.brownpaint.com
512.506.9740

COVER PHOTO

Do you take great photos?

Do you take great photos? Would you like to see your photo published? We are looking for great cover photos for upcoming issues of the Bee Cave Messenger. Our deadline for submittals is always the 9th of the month prior to the issue. All photos should be submitted electronically by the deadline date in high resolution (300 dpi) to beecave@peelinc.com. Portrait (vertical) photos work best.

This month's photo was submitted by Michelle Ellisor Photography.

To view other photos submitted please visit www.PEELinc.com/BeeCave, and view any of the past newsletters.

By submitting your photo you agree to allow your photo to be published in future issues of the Bee Cave Messenger or other Peel, Inc. publications.

Call 512-263-9181 to find out how to have your business featured on the cover of the Bee Cave Messenger.

Eggfest Winners From Rocky Creek

These Rocky Creek Rookies took home the prize this year in the 10th annual Eggfest competition that was held on Saturday April 27th. Winners Troy, Bill, Cary, Frank, Chris and Andrew.

Congratulations!



THINKING ABOUT
MOVING OR UPDATING
YOUR *home?*

- ✓ add a pool ✓ remodel a bathroom
- ✓ upgrade a kitchen ✓ replace a roof
- ✓ new paint ✓ new flooring
- ✓ improve landscaping

Call me!
512.608.3000

As a mortgage banker, I have the resources to make your plans come true. With over 30 years of experience, my team can handle all of your home financing needs.

Kimberly Jones

Mortgage Banker

NMLS: 814140

512-608-3000

kjones@ameriprofunding.com



AmeriPro Funding, Inc. NMLS#131699
8300 N. Mopac, Ste 120 • Austin, TX 78759

New Home Purchases
Conventional & Jumbo

Refinances
FHA, VA & USDA



This advertisement is for informational purposes only. This is not a commitment to lend or an offer to extend credit. All loans are subject to qualification and approval. Not all borrowers will qualify. Other terms and conditions may apply.

Around Bee Cave

Lupine Lane

On May 31, 2013, Lupine Lane broke ground on their new school and creative enrichment center in Rough Hollow. As the kids in pink and yellow construction hats watched in excitement, the golden shovels turned the first scoops of earth at 1001 Highlands Boulevard. In the small holes, the children planted the fruit trees that they have nurtured at the Lupine Lane Cottage during the 2012-2013 school year. As the kids grow older, they will return to Lupine Lane to care for the trees, then enjoy the shade and fruit the trees offer. It was a joyous, yet simple act that symbolizes how an idea the size of a seed can in fact be nurtured and grown into a wonderful, blossoming reality for the benefit and enjoyment of many.

The road to the groundbreaking was long, but meaningful. Lupine Lane was established in July 2008 and began with a class at the Lakeway Activity Center called Tasty Tuesday. The summer cooking class was a success. Lupine Lane's founder, Lauren Boyle, rediscovered her passion for creating and educating in the first moments of that class after spending the two previous years travelling. As a child, Lauren enjoyed spending any money she earned at the teacher store and using the supplies to set up classrooms in her New Jersey basement. Teaching seemed to be the right fit for her, however, after fieldwork in education courses during college, Lauren found that teaching in the public school system seemed like a daunting maze. She felt her entrepreneurial spirit tug, and there was no turning back. After the first summer's success, Lupine Lane began offering mommy and me classes and after school classes in Austin, Lakeway and Round Rock community centers. For 2 1/2 years, Lauren and her boyfriend, Carl Cates, packed up Lauren's silver Jeep full of ingredients for cooking classes, odds and ends for art projects and instruments for music, and set out to set everything up, teach, inspire and create, then take it all back down. Rinse and repeat. It was not ideal, but it was a start. And, they were doing it. Themselves. One day, during an Absolutely Art class at the Lakeway Activity Center, a friend and mother of one of the children spoke with Lauren about an international school that their family was opening in Lakeway. Both she and Lauren knew that Lupine Lane could somehow be involved.

In July 2010, surrounded by mountains of boxes, Lauren and Carl met with the owners of Abercorn International School to begin the after school program. In the school's first year, there was tremendous growth, yet there were some vacant rooms. While packing up one evening, Lauren and Carl looked around the bright, airy, large and perhaps most importantly, empty classrooms. The next afternoon, they approached the school about leasing one of the rooms. Everyone was excited; Lupine Lane would have a home and the programs would introduce curious children and parents to Abercorn. It was a match. In January 2011, Lauren and Carl created a space that they could call their own. After 2 1/2 years of using the Jeep, Lauren's parents' garage and extra room, just about wherever they could find, as home base, they could finally get in the car with a wallet and keys and head to work. It was freeing and grounding at the same time. They were finally able to fully manifest this philosophy they had worked diligently to create. And it went well. So well in fact, while planning their first full-fledged summer camp in 2011, Lauren decided that she would explore opening a preschool. It seemed to be a logical progression and everything Lupine Lane had done up until that point supplied all of the necessary components.

Since Lupine Lane was still within Abercorn, the program was first titled

Mother's Day Out. Lauren and Carl secured all of the licensure, developed a curriculum and embarked on a supremely wonderful first year. Vowing not to exceed 8 children that year, they developed a healthy waiting list. With that in mind, midyear, Lauren decided to explore securing an SBA loan to build a school and creative enrichment center. After compiling all of the necessary documentation, which could rival the Encyclopedia Britannica, and meeting with the most genuine and inspiring banker in all of Texas, Lauren secured an SBA loan, which would allow her to design and build a school. At that point, it became a tremendously complex ropes course. Having never dealt with architects, civil engineers, developers, loan processors, etcetera, it seemed as though each turn was another incredible learning experience. Thankfully, most everyone Lauren encountered was eager to patiently listen, decipher information and explain which direction to proceed. It was not always accurate advice, but there were always many lessons learned, nonetheless. After retiring, Lauren plans to write a book on how to build a school, to make the road a bit easier for those in the future. Although admittedly, someone who would be likely to go forward with this may be doing so with a naïve sense of courage. And, if the great intentions are there, perhaps they should remain naïve, so as to remain enthusiastic.

In the midst of the loan and design process, Lupine Lane outgrew its initial home at Abercorn. With little to no rental space that satisfied the needs of the school available, in true Lupine Lane fashion, Lauren and Carl secured a 3000 square foot modular home, which is now known as "the Lupine Lane Cottage". Given city restrictions, they found one of the only locations that would allow for the Cottage in the time frame needed before school began. They made it happen. The Cottage arrived on August 15, 2012 in three parts and without electricity, water or a floor covering the 3000 square feet. Contractors, teachers and family members set to work to get everything in place for orientation on August 30. In 14 days, the Cottage was set up and transformed into the most magical early childhood environment imaginable and is only more special now because of the wonderful children, teachers and families who come through its doors every day.

As Lupine Lane embarks on its next phase, we plan to do so with each previous step in the forefront of our minds and hearts. As when teaching children, it is vital to emphasize the importance of each step in a process. Whether the process is creating a sculpture, cooking pasta from scratch, a complex math equation or an imaginative backyard game, each step has value and importance. There is, at the very least, one thing that can be learned from each turn, hill or scenic view. And, it's important to take time to fully enjoy each learning experience, so it can be shared, perhaps in a new way, to inspire and ignite passions within others.

This summer, Lupine Lane will be offering a bevy of camps at the Cottage, for children 2.5-5 and 6-11. We are also enrolling for preschool and Kindergarten for the 2013-14 school year. Please come visit our site on Highlands Boulevard as our new school takes shape. You can also come by our Cottage, 3595 RR 620 S, either for camps or for a tour. We would love to share what we do with your family. To everyone trying to accomplish something, remember, with a will, there is truly a way. It simply takes an idea—a seed. With nurturing, the seed will grow into something wonderful that many will enjoy.

Visit Our
**NEW
MODEL
HOME**

Tuscan Works of Art...

Enjoy a life simplified in a comfortable Tuscan-inspired home in a serene park like setting. Embrace outdoor living in a home adjacent to the Falconhead Golf Course. Explore culinary talents with beautifully finished kitchens. Enjoy everything you want and need in a smartly designed home by Ash Creek Homes at The Grove at Falconhead. Starting in the low \$300s.



Six Floorplans to Choose From

EXCEPTIONAL AMENITIES INCLUDE:

- 1,600-2,800 Sq Ft
- Tile Roofs, Stone/Stucco Exteriors
- Single and Two Story Plans
- Lowest Property Taxes in Travis County
- Low HOA with Full Lawn Maintenance
- Private Pool, Pavilion and Dog Park
- Wooded Homesites, Golf Course Lots
- Lake Travis Schools
- Austin's Top Green Builder

14809 Falconhead Grove Loop
Bee Cave, TX 78738

512.328.2122

www.GroveAtFalconhead.com



The Grove
AT FALCONHEAD

ASHCREEK
HOMES
Creative Communities

Around Bee Cave

June Events at the Hill Country Galleria

6/13 Wine Walk

6/29 Hill Country Galleria Independence Day Festival

Join us on Saturday, June 29th for a FREE Independence Day celebration from 11am-9pm. This will be the 6th year the Hill Country Galleria has put on an Independence Day celebration with live music and fireworks, and the 2nd year that the creators of the Old Pecan Street Festival will be running the show! Arrive early in the day to enjoy carnival rides, petting zoo, and the newly added water games! Stay cool with slip slides, water games, and splash pools! There will be over 120 art vendors that will line Main Street to please your shopping needs, as well as international food vendors and festival treats. Live music will fill the air all day including Band of Heathens, Guy Forsyth, White Ghost Shivers, MilkDrive, Ghosts Along the Brazos, Rebecca Butler & The Richards, and kiddie music by The Que Pastas! As always, the festival will conclude with a spectacular firework show and grand finale! For more information and complete music line-up please visit www.HillCountryFest.com.

HOME EQUITY LINE OF CREDIT

Home
SWEET
★ HOME ★

NO CLOSING COSTS ON MOST LOANS!¹

THE INTEREST YOU PAY MAY BE TAX DEDUCTIBLE.³

Use the money for whatever you want!

1 %
APR¹
for 6 mo.
INTRODUCTORY
FIXED RATE

3.99 %
APR¹
thereafter
RATES AS
LOW AS
VARIABLE RATE AFTER
INTRODUCTORY PERIOD

 **BROADWAY BANK**

We're here for good.

888.745.8686 | broadwaybank.com

39 NEIGHBORHOOD LOCATIONS | Member FDIC



Bee Cave | 12101 Bee Caves Rd., Bldg. 3 | 512.465.6510

¹ APR = Annual Percentage Rate. Introductory rate offer good on applications received 4/29/13 through 8/3/13 on 15-year Home Equity Line of Credit (HELOC) program. All loans subject to credit approval, verification and collateral evaluation. Refinance of Broadway Bank Home Equity Loan or Line of Credit requires \$10,000 new money. To obtain introductory rate on existing bank HELOC, account must be at least 24-months-old and approved for a \$25,000 line amount increase. Rates, terms and conditions are subject to change without notice. Variable rate shown is for lines \$50,000 and over and assumes excellent borrower credit history. Introductory rate of 1% APR is fixed for the first 6 months. Thereafter, Home Equity Line of Credit rates are variable and are calculated by adding a margin to the Wall Street Journal Prime rate as published in the Wall Street Journal. As of 4/30/13 the Wall Street Journal Prime rate was 3.25% and the APR range was 3.99%-11.49%. Maximum APR is 18%. We will set your variable APR based on your individual circumstances including your credit history, loan amount, loan term, and our internal credit criteria. ² Standard closing costs up to \$300 are paid by the bank and may include a title search, credit report, property inspection, flood certification, and filing fees. Does not include appraisal, title insurance and survey costs if required. Property insurance will be required including flood insurance where applicable. Other closing costs can range from approximately \$350 (on lines up to \$150,000) to \$4,000 (on lines above \$150,000 to \$250,000). All home equity lines must be secured by a 1-4 family, owner-occupied primary residence. Conditions and restrictions apply. Larger lines and other programs available. Please ask us for details. ³ Consult your tax advisor regarding deductibility of interest.

2013 HILL COUNTRY GALLERIA INDEPENDENCE DAY FESTIVAL



Saturday, June 29th ★ 11AM-9PM

www.HillCountryFest.com

Brought to you by
Special Events Live
Producers of Austin's beloved Pecan Street Festival

PONY & CARNIVAL RIDES • PETTING ZOO • FIREWORKS • WATER GAMES

JOIN US AT THE HILL COUNTRY GALLERIA FOR
AN INDEPENDENCE DAY CELEBRATION WITH
OVER 120 LOCAL ART VENDORS, LIVE MUSIC,
PETTING ZOO, FIREWORKS, AND ARRIVE EARLY
TO ENJOY THE NEWLY ADDED WATER GAMES!

LIVE MUSIC BY:
BAND OF HEATHENS
GUY FORSYTH
WHITE GHOST SHIVERS
...AND MORE

12700 HILL COUNTRY BLVD. BEE CAVE, TX
LOCATED ON HIGHWAY 71 BETWEEN BEE CAVE ROAD AND HIGHWAY 620 • 512-263-0001

Around Bee Cave

Fun Summer Events at Bee Cave Public Library

Bee Cave Public Library is offering a wide range of fun as part of the 2013 Summer Reading Program, "Dive into Summer—Read!" All events are free and open to the public, although some are better suited for older children or teens. For detailed information about specific events, call the library at 512.767.6620 or visit the Summer Reading Blog at <http://bcplsrp.blogspot.com/>.

June 7, 10:30 a.m. "Meet a Real Dairy Cow," when the Southwest Dairy Farmers' Mobile Dairy Classroom visits the Hill Country Galleria for a milking demonstration in front of the library. Bring a towel or blanket to sit on, and wear sunscreen or a hat.

June 11, 2:00 p.m. "Meet the Author" when teen author Lindsey Scheibe visits the library on June 11 at 2 p.m. to talk about her new book, Riptide.

June 12, "Happy Tails" brings live animal shows at 1:30 and 3:30 p.m. All ages are welcome.

June 18, "Come and Go Crafts" from 2:00-4:00 p.m. offers a chance to get creative. For all ages.

June 19, Lucas Miller, The Singing Zoologist delivers his fun and educational show at 2 p.m. For all ages.

June 25, "Fossils & Dinosaurs" with Dr. Pamela Owen, Paleontologist at 11:00 a.m. and 2:00 p.m. For all ages.

The library is also offering book clubs for kids featuring discussions of some of the best-loved series along with trivia, crafts, and fun snacks:

June 13, "The Hunger Games" Book Club at 2:00 p.m. for grades 7 and up.

June 20, "Percy Jackson" Book Club at 2:00 p.m. for grades 3-6.

June 27, "Magic Tree House" Book Club at 2:00 p.m. for grades 1-3.

Last but not least, the library is hosting the author and illustrator of the new hit children's book, Goodnight Austin, A Bedtime Book for All Who [heart] Austin, when Allison Amador and Tammy Stanley hold a "Sleepytime Storytime" on June 26 at 6:15 p.m. The book is a delightful take-off on the classic Goodnight Moon featuring such Austin icons as the bats under the Congress Avenue bridge, the Longhorns, the moonlight towers, the 360 bridge, Whole Foods Market, Amy's Ice Cream, and Hey, Cupcake!

All events at the library are free and open to the public. Children who register for the Summer Reading Program can earn prizes by logging the minutes they read, while adults and teen can earn raffle tickets for prizes from local restaurants, spas, and stores.

"This year's major sponsors include The Shops at the Galleria and Rigby Advanced Dental. Other business partners include Learning Express Toys, Lupine Lane Preschool, PAIYH Dance Studios, and Nitro Swimming," said Library Director Barbara Hathaway. "Their generous donations help underwrite the programs, performers and prizes that help make summer reading so much fun."

Visit the library website <http://pl.beecavetexas.gov> for more information or call 512.767.6620. Bee Cave Public Library is located in the Hill Country Galleria, at the intersection on Highway 71, Ranch Road 620 and Bee Cave Road (FM 2244).



Chris Beltran

Mortgage Market Manager

NMLS ID 418640

901 S MoPac Expy Bldg 3 Suite 140
Austin Texas 78746

C 512-750-3771

chris.beltran@pncmortgage.com

pncmortgage.com/chrisbeltran

A division of PNC Bank, National Association



Lakeway Regional Medical Center Has Four Doctors Nominated for Prestigious Award

Lakeway Regional Medical Center is proud to announce that four of their physicians have been nominated for the AORN award (Association of periOperative Registered Nurses). The AORN award recognizes outstanding individuals in various areas of the operating room for their level of communication, innovation, quality and collaboration.

The physicians that were nominated are Dr. Mark Jayawant (Cardiothoracic Surgeon), Dr. Andy Hawthorne (General Surgeon), Dr. Mark Parrella (Orthopedic Surgeon) and Dr. Dr. Salvador Diaz (Anesthesiologist). These physicians were nominated by the staff in the OR for their level of commitment and how they practice the philosophies of the hospital. They all lead by example and actively help educate their staff improve the quality of patient care.

AORN is a non-profit membership association based in Denver, Colorado that represents the interests of more than 160,000 perioperative nurses by providing nursing education, standards, and clinical practice resources—including the peer-reviewed, monthly publication AORN Journal—to enable optimal outcomes for patients undergoing operative and other invasive procedures. AORN's 42,000 registered nurse members manage, teach, and

practice perioperative nursing, are enrolled in nursing education, or are engaged in perioperative research. We define and advance best nursing practices for surgical patients by researching and distributing scientifically based recommendations.

"These physicians are a true asset to Lakeway Regional Medical Center and they strive for excellence," says Nancy Gundersen, Director of Surgery at LRMC. "We are blessed to have their excellence and role modeling empower our nurses and encourage their growth."

ABOUT LAKEWAY REGIONAL MEDICAL CENTER

Lakeway Regional Medical Center brings experience, advanced technology and best practices to provide high-quality care for patients. Since opening in April 2012, LRMC has been providing comprehensive, compassionate and modern medical treatment. As a full-service hospital with board-certified physicians, LRMC manages everything from emergencies to outpatient procedures. Ranked among the top 10 percent of hospitals nationwide by Healthstream, an independent research company for outpatient services in 2012. For more information about LRMC, visit lakewayregional.com or call 512-571-5000.



PREMIER
FAMILY
PHYSICIANS

YOUR FAMILY. OUR TEAM. GOOD HEALTH.

@ Bee Cave

11701 BEE CAVE RD. (SOUTH SIDE OF BEE CAVE ROAD AT RESACA BLVD.)

SAME DAY APPOINTMENTS

LESS THAN 1 MILE FROM HILL COUNTRY GALLERIA

AVAILABLE FOR CAMP, SCHOOL & ATHLETIC PHYSICALS

NOW ACCEPTING NEW PATIENTS >>> [512] 892-7076 <<< WWW.PFPDOCS.COM

@ Bee Cave

@ Oak Hill

@ Westlake

@ South Austin

School News

LTHS AP Art Student Awarded Local Scholarship

Friday afternoon, May 17, at the Blues Day Studio owned by Eric and Janet Sims, a reception was held for the Lake Travis High School AP Art Student Exhibition. The Sims donated the gallery space for the students to showcase their work. The Waterloo Watercolor Group President, Donna Overly, presented a \$100 scholarship to senior Ava Mallett for her water media painting "Functionally Disorganized."



Left to right: Juror Rae Andrews, Principal Kimberly Brents, Ava Mallett, Amber Kyle Forgey, Janet Sopp-Sims, and Donna Overly.

Rae Andrews, long time member of the WWG and art teacher who has juried many shows, selected Ms. Mallett's painting for its design and proportion as well as the use of the white paper which is frequently overlooked with watercolor. Rae enjoyed the overall high quality of the student work and praised teacher, Amber Kyle Forgey, for her efforts in preparing her students for their art careers. The Blues Day Studio, located at 900 RR620, is open M-Sat from 12-6:30pm.

LTEF Prize Patrol Awards \$227,920 in Grant Funding

May 10th was a special day for schools and teachers across the Lake Travis Independent School District. Armed with big checks to highlight the total each campus received in grant funding, directors from the Lake Travis Education Foundation visited all LTISD campuses to officially award more than \$227,000 in total grants. Across the district, schools received funding for reading, math, social studies, and science programs, along with physical education, fine arts, character education, and technology. A total of \$205,000 was granted on a per-student basis, allowing every campus to receive an equitable amount based on enrollment. The district was awarded an additional \$22,920 by LTEF for iPad funding.

The Prize Patrol day is fun for the volunteer directors of LTEF, who have worked hard all year raising the majority of the money through special events such as the annual Gala and "Fore" the Kids Golf Tournament. Giving it away, and seeing how their work impacts the students of the Lake Travis ISD, makes it all worth it.

"With the rapid growth in our district, grant awards from LTEF are even more critical to meeting the expanding needs of our teachers," explained LTEF Grant Chair Julie Flores. "Increased donations from our community would allow us to award even more grants to meet these needs. When you witness firsthand the difference these grants make for our students and teachers, you truly understand the key role LTEF plays in the district."

The directors of the Lake Travis Education Foundation encourage all members of the community to make a direct impact on the future of children throughout the Lake Travis Independent School District by partnering with LTEF. Established in 1985, the Foundation has supported LTISD schools and students with over \$3 million in grants and scholarships. For further details and a complete listing of awards, visit www.LakeTravisEducationFoundation.org.



Lake Travis Education Foundation Prize Patrol members present a check to Lake Travis ISD representatives for grant funding for all campuses.



TLC provides a full range of services for people with busy lives. Trust us to care for your home, pets and senior family members while you are away at work, on business trips, or on vacation.



Pet Sitting

- Pet care and Fitness program
- In-Home Day or Overnight care



Home Services

- House sitting, home security checks
- Indoor/Outdoor Property Caretaker



People Care

- Transportation for doctors visits, shopping and more
- Home visits, outings, errands

Proudly serving our community with TLC.
Make your reservation today!

www.TLCHomeandPetServices.com or call 512-468-5946.

Serving Greater Lake Travis, Lakeway, Spicewood, Bee Creek, Hamilton Pool Road, Oakhill, RR12 to Dripping Springs, Hwy 71, Steiner Ranch, River Place and Westlake.

DROWNING IS PREVENTABLE



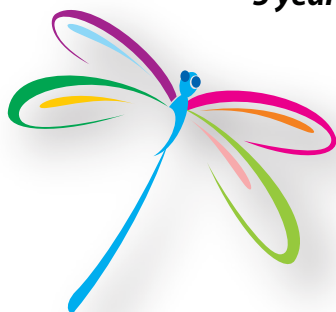
COLIN'S HOPE
WATER SAFETY TIPS AT
WWW.COLINSHOPE.ORG



5 years ago this month, Colin Holst tragically and silently drowned at the age of 4.

10 Texas children have already drowned this year.

Be a Water Guardian and help prevent children from drowning.



Ongoing: Volunteers needed to stuff and distribute water safety packets info@colinshope.org

Ongoing: Colin's Hope Athlete Ambassadors needed! <http://www.tinych.org/signup>

Now-June 18: Discount Schlitterbahn Tickets for sale. <http://www.tinych.org/tickets>

June 18: World's Largest Swim Lesson at Schlitterbahn Waterpark New Braunfels

July 1: Colin's Hope Got2Swim Lake Austin 4 Miler (solo or relay) <http://www.tinych.org/got2swim4>

July 21: Colin's Hope Kids Got2Swim Pure Austin Quarry Lake <http://www.tinych.org/got2swimkids>

Volunteer - Donate
COLINSHOPE.ORG



LAYERS OF PROTECTION



**CONSTANT VISUAL
SUPERVISION**



LEARN TO SWIM



**WEAR LIFE
JACKETS**



**MULTIPLE BARRIERS ON
ALL POOLS & HOTTUBS**



**KEEP BACKYARDS &
BATHROOMS SAFE**



LEARN CPR



**CHECK POOLS/HOTTUBS
1ST FOR MISSING CHILDREN**



**VISIT US
ONLINE**

News You Can Use

SEND US YOUR *Event Pictures!!*

Do you have a picture of an event that you would like to run in this newsletter? Send it to us and we will publish it in the next issue. Email the picture to beecave@peelinc.com. Be sure to include the text that you would like to have as the caption. Pictures will appear in color online at www.PEELinc.com.



Calling All Artists

The Lake Travis area is rich in talented artists, but a bit short on easily accessible places to display their work for the community. The new Lake Travis Community Library now offers artists and art enthusiasts one more such facility. The library is launching a Rotating Art Program, sponsored by the Friends of the Library, to give artists space to show and sell their work. "Not only is this a great opportunity for artists, but our patrons will also be able to interact with the artists and get acquainted with a wide variety of media and techniques, from oils and collages to watercolors and photography," said Library Director Morgan McMillian. Individual artists or artist groups who apply to the program in April will be considered for exhibit space in the subsequent months. "We hope to have the first exhibit in June and welcome new artists to display their work," said Diane Taylor, Chair of the Committee. The Committee, which also includes Joyce Botta and Valerie Liebl, will review the applications and select exhibitors based on guidelines in the Rotating Art Exhibit Policy recently adopted by the Library District Board. Artists can pick up copies of the policy and application forms at the Circulation Desk at the library, located at 1938 Lohmans Crossing or by visiting www.laketravislibrary.org. "The new library is architecturally interesting, and its contemporary interior and pleasing color scheme will be a perfect backdrop for artists to showcase their work and talent," said Janet Wright, Chair of the Lakeway Arts Committee. "The community and its artists are so fortunate to have this new library in our area."

Specializing in the Extraordinary



Jana Church
REALTOR®

Capital
City

Sotheby's
INTERNATIONAL REALTY

MASTER PLANNED COMMUNITIES

LUXURY HOMES

GENTLEMEN'S RANCHES

LAKEFRONT

INVESTMENTS

C: 512.971.5213 | E: Janachurch@yahoo.com | W: janachurch.capitalcitysothebysrealty.com/eng

Lack of Advance Planning Causes Constant Low Lake Levels

Deborah S. Gernes, WCID 17

From April 11 to the end of May, LCRA is releasing water from the Highland Lakes for the endangered Blue Sucker fish. Environmental releases such as this are often times met with the natural “run of the river” flows, but in severe drought conditions such as we are in now, there are little or no inflows, so the water must be provided from the storage in Lakes Travis and Buchanan.

Environmental flows are vitally important and must be maintained. These flows are a firm water requirement which LCRA is aware of and must account for in their Water Management Plan. Because of the continuing extreme drought conditions and because of LCRA's large water releases from the Highland Lakes storage for agriculture in 2011 despite the hottest summer in history and despite predictions of continuing drought, Lake Travis was drawn down to a low level of 626 ft msl in November of 2011. The lakes have never recovered, and are at a critically low level even now. (The lowest level recorded in the 1950s drought was 614ft msl.) These low levels cause the lakes to hover at a continual state of emergency year round and are a danger to municipal water supplies critical to the health and safety of residents, schools, hospitals and businesses.

Water District 17 and all other water utilities have had their customers on mandatory outdoor use restrictions for two years.

Utilities are concerned because the level of Lake Travis is currently below 628 ft msl (38%), the combined storage in Lakes Travis and Buchanan is only 782,000 acre feet (39%), and the hot season has not yet even started. The required environmental releases are now causing Lake Travis to fall at 6 inches per week and combined storage to fall at 10 acre feet per week. The result of these releases will be that in a few weeks, the lakes will be down to 750,000 acre feet, which is the trigger point for stage 3 drought conditions which will require water utilities to cut customers back to once per week outdoor watering.

LCRA held a firm water customer meeting to discuss mandatory curtailment which will be ordered when the lakes get down to 600,000 acre feet of storage. LCRA is now predicting this curtailment will happen in mid-summer if there is no significant rainfall. Mandatory curtailment is a formal term which requires a 20 percent cutback from 2011 actual water usage rates. In order to achieve this high percentage reduction, it may be necessary for utilities to cut off all outdoor use with the exception of tree watering.

Unless there is some rainfall soon, residents need to be prepared for extreme cutbacks in outdoor water usage this summer.

Primrose Schools® Summer Camp – Passport to Adventure!



From the great outdoors and virtual travel to music and dance, Camp PrimroseSM is your family's passport to adventure and fun this summer! Exciting field trips, creative activities and fun adventures with friends will help Explorers play, laugh and learn their way through an unforgettable summer. Customize your adventure by selecting specific camp weeks or join us all summer long!

Start planning your summer adventure now – CampPrimrose.com

Primrose School of Bee Cave

3801 Juniper Trace, Austin, TX 78738
512.263.0388 | PrimroseBeeCave.com



**Active Minds, Healthy Bodies,
and Happy Hearts®**



Primrose Schools®
The Leader in Educational Child Care®

Each Primrose School is a privately owned and operated franchise. Primrose Schools and The Leader in Educational Child Care are trademarks of Primrose School Franchising Company. ©2013 Primrose School Franchising Company. All rights reserved.

Business Section

Seven Business Networking Groups in the Area

ARE YOU LOOKING TO GROW YOUR BUSINESS IN 2013?

If so, you might be interested in a few of the business networking groups in the area. These are a few to choose from:

STEINER RANCH REFERRALS BNI GROUP

Meetings are on Tuesday mornings from 8:00am to 9:30am at the Oasis. Visitors are welcome! If you are interested please contact Michael Bennett at michael@bennett-tech.net for more information or visit www.BNIAustin.com.

FOUR POINTS CHAMBER OF COMMERCE

The Four Points Chamber of Commerce provides networking opportunities at social gatherings, luncheons with guest speakers and activities. The Chamber brings businesses together along highway 620 from Hudson Bend to Anderson Mill and Ranch Road 2222 from Jester to Volente. Four Points Chamber supports business growth in the community where we live, work and play. In less than 6 months Four Points Chamber of Commerce exceeded its first year membership goals and continues to grow! For information about participating in upcoming events or membership benefits visit www.fourpointschamber.com or call (512) 551-0390. Membership inquiries may also be sent directly to membership@FourPointsChamber.com.

NETWORKING NORTHWEST AUSTIN

Networking Northwest Austin is expanding its member base of businesses in our area. We believe in business by referrals and having a limited member base. We have a caring, positive, involved group of people who wish to build their businesses using the strength business referrals. No fees. Business education and speakers. Networking Northwest Austin meets on the second and fourth Mondays at 11:30 at Cheddars HWY 183 and Anderson Mill Rd. Visit <http://www.meetup.com/NetWorking-NorthWest-Austin/>

STEINER RANCH MARKETERS MEETUP GROUP

Join other marketers who live in Steiner Ranch and work in online marketing, search engine optimization, affiliate marketing,

search engine marketing, social media optimization, social media marketing, pay-per-click advertising, email marketing, and other areas of Internet marketing. Informal get-togethers in the community to learn and share things, as well as make connections with others. The group is open to anybody who lives in Steiner Ranch and is interested in Internet marketing: entrepreneurs, freelancers, 9-to-5ers, business owners and aspiring marketers alike. More details at SteinerRanchMarketers.com

YOUR LOCAL CITY

Steiner Ranch has a new business networking group. Your Local City is a positive, membership based, business networking organization with 17 groups meeting all over the Austin area. The Steiner Ranch group meets every Friday at 8:00 am at Lakeside Pizza and Grill located in the Shops at Steiner Ranch at Steiner Ranch Blvd. and Quinlan. Come join us to grow your business.

LAKEWAY NETWORKING, INC.

We are a diverse group of business professionals in the Lake Travis area, helping our members grow their businesses through qualified referrals. We meet every Thursday at 8AM at Santa Catarina, 1310 RR 620 South, in Lakeway. Come visit us and see how your business can benefit by being a member of Lakeway Networking. For more information, please contact Kelly Connor at kellyconnor@austin.rr.com or 512-736-2495.5.

A+ REFERRALS BY THE LAKE BNI (LAKEWAY)

BNI is a professional business networking group that helps you build a team of partners to market your business. Come join us on Mondays from 11:30-1:00pm at Fore in Lakeway. Lunch is \$10 and visitors are welcome. Please feel free to contact Kimberly McLaughlin at kimberly@LaHaPro.com or visit www.BNIAustin.com for more information.

GOOD PAINTING IS PRECISE. BE SELECTIVE.



Exterior & Interior Painting Professionals

You can trust our painting professionals to respect your home like it was their own. From the time you invite us to provide a free estimate, until the project is complete, you won't have any doubts that you've made the right decision in choosing ProTect Painters.

Westlake Hills, Lost Creek, Northwest Hills, Rollingwood, Bee Cave, Lakeway, The Hills and Lake Travis communities.

512.588.8056



We solve all the
pieces to the puzzle.



PEEL, INC.
printing & publishing

**Call Today to Get Started
On All Your Printing Needs.**

512-263-9181

EXPERIENCE MATTERS doing business for 30+ years.

LAKEWAY OWNED & OPERATED
308 Meadowlark St. • Lakeway, TX 78734

Business Section



**GO GREEN
GO PAPERLESS**

Sign up to get this newsletter in your inbox! Visit peelinc.com for details.

**NOT AVAILABLE
ONLINE**



*Advertise
Your Business
Here!*

888.687.6444

**DIRECTV is rolling out
the RED CARPET**

VIP Pricing exclusively
for Residents



DIRECTV
Prices starting at
\$29.99

*FREE 5 tuner Genie HD/DVR
Instant rebate on all packages
Record, watch and playback in
HD from any room*

*FREE Installation
Up to 3 FREE additional
HD client boxes
FREE HBO, Cinemax, Starz
& Showtime for 3 months*

Mention this ad for your VIP deal.
CALL NOW!

1.888.799.0512



BUSINESS CLASSIFIEDS

JOE KASSON PAINTING - 512-312-1035: Residential Specialist since 1976. Interior and Exterior Painting, Carpentry and Siding. Quality Work Competitive Prices. Experienced Dependable Insured. Neighborhood References. Free Estimates. www.joekassonpainting.com.

ADVERTISING INFO

Please support the advertisers that make Bee Cave Messenger possible. If you are interested in advertising, please contact our sales office at 512-263-9181 or advertising@peelinc.com. The advertising deadline is the 8th of the month prior to the issue.

STEVE'S PLUMBING REPAIR

- water pressure problems
- sewer & drain service
- fiber optic drain line inspections
- free estimates
- satisfaction guaranteed

Steve Brougher
276-7476 • 2605 Buell Ave



Master
License:
M-39722



RESORT COMMUNITY & PRIVATE CLUB

A LUXURY RESORT COMMUNITY NOW OFFERING CABIN RENTALS

BOOK NOW AND RECEIVE 20% OFF CABIN RENTALS!



If you're considering a home in the Hill Country, The Reserve offers large acreage privacy & waterfront home sites, lake view cottages and lakeside villas. We invite you to visit The Reserve for the day or the weekend and experience our property as our residents do. Make plans now to stay in one of our luxury cabins, tour the property and enjoy the use of our resort amenities.

All cabin guests can enjoy all of our community amenities including:

SWIM PARK & LAZY RIVER WITH MULTI-LEVEL DECKS,
SWIM-UP BAR, SPA & WATERSLIDE

LAKESIDE DINING

MULTI-DISCIPLINE EQUESTRIAN CENTER

AWARD-WINNING MARINA WITH 162 SLIPS

FAMILY FISHING POND

GOLF CART RENTALS

CONCIERGE & ROOM SERVICE AVAILABLE

19926 Thurman Bend Rd. | Spicewood, TX 78669
ReserveAtLakeTravis.com

HAL JONES
DEVELOPMENT LLC
RM McCOMBS PROPERTIES

CALL 877-369-2045 OR VISIT RESERVEATLAKETRAVISRENTALS.COM
TO RESERVE YOUR CABIN TODAY!

Weekends require a 2 night minimum. (Subject to availability, some blackout dates apply)



PEEL, INC.

308 Meadowlark St. South
Lakeway, TX 78734

PRSR STD
U.S. POSTAGE
PAID
PEEL, INC.

BEE



More options for less invasive
procedures will impress **you**,



our expertise to handle the unexpected
will reassure your **heart**.

The Heart Institute's 2-to-1 staff-to-patient ratio ensures maximum individual attention and care. Our staff includes experienced cardiologists and surgeons who can assist with nearly any heart-related issue.



Lakeway Regional
Medical Center
HEART INSTITUTE

100 Medical Parkway, Lakeway | 512-571-5000 | LakewayRegional.com