

# THE TALON

December 2013

Official Publication of the Eagle Springs Community Association

Volume 5, Issue 12



## WinterFest is Here!

Come join your neighbors as we celebrate the holidays with WinterFest at the Town Center and Athletic Clubhouse on Saturday, December 7th from 2-5. Arts and crafts, games, horse-drawn wagon rides, camel rides, trackless train and petting zoo are all activities on the agenda for your family. A certain bearded man is also scheduled to make an appearance as well!

Concessions from Gigi's Cupcakes, Tipico Café and more will be available for purchase. "Twas the Night before Christmas" puppet show is one of the featured performances on the schedule for WinterFest. Check

out InsideEagleSprings.com for specific times.

Don't forget to bring your gingerbread house creation for our annual Gingerbread House Contest! Houses can be dropped off on the front porch of the Athletic Club, and judging begins at 4:45 pm. Residents must be present to win, and gift cards will be awarded to the top three entries. The only rule? Everything must be edible on your gingerbread house, so BE CREATIVE!

If you or your child would like to volunteer to gain service hours, please email [Activities@InsideEagleSprings.com](mailto:Activities@InsideEagleSprings.com)

## COMMUNITY CALENDAR DECEMBER 2013

7.....**WinterFest**  
*2-5 pm / Town Green and  
Athletic Clubhouse*

10.....**Book Club**  
*8-10 pm / Athletic Clubhouse*

12.....**Neighborhood Voting  
Representative Meeting**  
*7-9 pm / Valley Springs Clubhouse*

13.....**Scrapbooking**  
*12-6 pm / Athletic Clubhouse*

21.....**Winter Holiday**  
*Onsite Office Closed  
through January 3rd*

25.....**Merry Christmas**

31.....**New Year's Eve**

## COMMUNITY CONTACT INFORMATION

### EAGLE SPRINGS COMMUNITY ASSOCIATION

**Board of Directors** ..... AsktheBoard@InsideEagleSprings.com  
**Crest Management Co.** ..... 281-579-0761  
 Community Manager ..... Bill@Crest-Management.com  
 Clubhouse Rental ..... Help@InsideEagleSprings.com  
 Activities ..... Activities@InsideEagleSprings.com  
 Website Administrator ..... Help@InsideEagleSprings.com  
 Newsletter ..... Help@InsideEagleSprings.com

### EMERGENCY INFORMATION

**Fire, Medical or Life Threatening Emergency** ..... 9-1-1  
 P-4 Constable Dispatch ..... 281-376-3472  
 Humble ISD Police (Schools) ..... 281-641-7900  
 Atascocita Volunteer Fire Dept (AVFD)  
     *Non-Emergency Number* ..... 281-852-2181  
 Harris County Animal Control ..... 281-999-3191  
 Texas Poison Control Center ..... 800-222-1222

### UTILITIES

Electric, (multiple providers) ..... www.powertochoose.org  
     *Power Outages* ..... 713-207-7777  
     *Street Light Outages* ..... 713-207-2222  
 Gas, Centerpoint Energy ..... 713-659-2111  
     *Gas Leaks* ..... 713-659-2111  
 Water, Severn Trent ..... 281-579-4500  
     *24 Hour Emergency Number* ..... 281-209-2100  
 Humble Post Office ..... 281-540-1775  
 Trash & Recycle, Best Trash ..... 281-313-2378

### TELEPHONE/TV/INTERNET PROVIDERS:

Centurylink ..... 877-290-5458  
 Comcast ..... 800-266-2278  
 DISHNetwork ..... 877-903-3813  
 DirecTV ..... 888-777-2454

### SCHOOLS

Humble ISD ..... 281-641-1000  
     *Website* ..... www.humble.k12.tx.us  
 Eagle Springs Elementary ..... 281-641-3100  
 Atascocita Springs Elementary ..... 281-641-3600  
 Timberwood Middle School ..... 281-641-3803  
 Atascocita High School ..... 281-641-7500

### NEWSLETTER PUBLISHER

Peel, Inc. .... 888-687-6444  
 Advertising ..... advertising@PEELinc.com

## NEW ONSITE OFFICE HOURS

*Effective November 1, 2013 to February 28, 2014,  
 Winter Hours will be in effect.*

*Winter Hours are:*

**Wednesday.....3:00 PM to 8:00 PM**

**Saturday.....9:00 AM to 1:00 PM**

## EAGLE HATCHLINGS

CONGRATULATIONS TO OUR **NEWEST** ARRIVALS!



**Marissa Brook Yates**

Born: **August 5, 2013**

**5 lbs, 9 ounces 18.9 inches**

Parents: **Tim and Marla Yates**

Proud Siblings: **Marlie and Reed**

Neighborhood: **Arlington Park**

## DIRECTV is rolling out the RED CARPET

**VIP** Pricing exclusively for Residents



**FREE 5 tuner Genie HD/DVR**

**Instant rebate on all packages**

**Record, watch and playback in HD from any room**

**FREE Installation**

**Up to 3 FREE additional HD client boxes**

**FREE HBO, Cinemax, Starz & Showtime for 3 months**

Mention this ad for your VIP deal.  
**CALL NOW!**

**1.888.799.0512**



# REBEKAH SNIPP

**Better Homes and Gardens Real Estate Gary Greene**

**832.814.6120 - Cell**



9000 Forest Crossing The Woodlands, Texas 77381

**281.367.3531 - Office**

*We realize you have a choice so we appreciate the opportunity to earn your business.  
Building clients for life while giving back to the community in order to make a difference!*

## Merry Christmas Eagle Springs!

**From  
Rebekah Snipp and Better Homes and Gardens Gary Greene**

I would like to wish everyone happiness and joy this Christmas season! December is a time for family and a time to remember the less fortunate. If you are able please consider helping brighten someone's Christmas season with an act of kindness, a thoughtful gesture, a surprise gift, or giving your time to show that you care. Christmas is a magical time of year, a time for family and friends, and a time for giving. Volunteerhouston.org is a great resource to visit with ways to get involved. Merry Christmas to all!

Many people ask me if December is a good time to list their home. Historical trends show a decrease in buyer activity from mid-December to mid-January each year as buyers focus on the holidays. Listing appointment activity however remains strong in December. Some Sellers decide to go active in December while other Sellers go active in January. Whatever your choice, doing the listing appointment in December can benefit all parties. January always brings a flurry of new listings. Beating the rush and getting everything ready for after the first of the year is a strategy many of my homeowners like to follow. Either way I am ready to meet with you to discuss a proven market strategy for listing your home, call me today at 832-814-6120 to schedule a time to meet in person.

I appreciate the opportunity my clients have provided me to assist them with their real estate transactions. As of November 8, 2013 I have sold 52 Homes totaling over \$11 Million dollars, plus another 11 homes currently in pending! If you are in the market to buy or sell your home, please keep me in mind. It would be my extreme pleasure to meet with you on this very important decision in your life. Building clients for life while giving back to the communities I service.

**ExxonMobil** is already bringing new homebuyers to the area and that growth will continue for several years. If you are relocating in or out of the area, I am an experienced Relocation Specialist offering Premier Service with Cartus. I can assist you in our local market and can also refer you to a Relocation Specialist in any other area of the US, as well as International destinations. Better Homes and Gardens Gary Greene is a Principal Broker in the Cartus Relocation Network. I have extensive experience with many other relocation companies as well.

**Sold for 2013 thru Nov 8, 2013 SOLD-SOLD-SOLD-SOLD-SOLD-SOLD-SOLD-SOLD-SOLD-SOLD**  
35 Altwood, 18006 Cabin Green, 12707 Cedar Grove, 12706 Smokey Mountain Court, 12619 Quartz Lake, 14340 Misty Meadow, 7105 Hot Creek Trace, 12702 Wolf Creek, 7231 Wisteria Chase, 12002 Fall River Pass, 14402 Castle Cove, 12111 Wind Cove Place Court, 17511 Big Horn, 26115 Queens Glen, 7238 Wisteria Chase, 18510 Wild Basin, 18014 Cabin Green, 15603 Summer Heath, 17023 Stones River, 18615 Walden Forest, 28519 Yonder Way, 12207 Salt River Valley, 12822 Muir Woods, 13003 Wood Stork, 18527 Roaring River, 18403 Marlin Waters, 101 Arthur, 19923 Maletia Way, 18214 Enchanted Rock Trail, 20211 Water Point, 17515 Salt River Valley, 27089 Crown Chase, 18506 Red Sails Pass, 18530 Wild Basin, 19055 Keyturn, 21407 Village Crossing, 17338 Tower Falls, 17527 Salt River Valley, 18054 Crescent Royale Way, 12327 Landsdown Ridge, 18010 Cabin Green, 12219 Carriage Oaks, 12911 Mallard Way, 14607 Sutter Creek, 30 Arcadia Way, 18703 Regatta Road, 17319 Windkey Ct, 12123 Carriage Oaks, 14106 Rock Dove, 16323 Peach Orchard, 12738 Smokey Mountain, 18407 Huron Park

**Safe travels to each of you during this holiday season. Thank you again for your business in 2013.**

**Blessing to you,  
Rebekah Snipp**

Did you know.....Coming in the summer of 2015 is the new amusement park that will be located on 150 acres at 242 and Hwy 59. The amusement complex will bring in new hotels, restaurants and jobs. Coupled with the future development of Generation Park off Beltway 8, the Northeast will see growth going forward into the near future. Visit <https://www.facebook.com/GrandTexas> and <http://www.generationpark.com> for updates.

BETTER HOMES AND  
GARDENS REAL ESTATE  
GARY GREENE

**Rebekah Snipp**  
Realtor, ABR, CDPE  
Direct: 832-814-6120  
[rsnipp21@gmail.com](mailto:rsnipp21@gmail.com)

**Mark Snipp**  
Broker, GRI  
Direct: 832-859-9113  
[majorleaguehomes@earthlink.net](mailto:majorleaguehomes@earthlink.net)

Website:  
[majorleaguehomes.com](http://majorleaguehomes.com)



*Resident of Eagle Springs*



©2012 Better Homes and Gardens Real Estate LLC. A Realty Company. All Rights Reserved. Better Homes and Gardens Real Estate LLC fully supports the principles of the Fair Housing Act and the Equal Opportunity Act. Each Office is Independently Owned and Operated. Better Homes and Gardens, the Better Homes and Gardens Real Estate logo are registered service marks owned by Meredith Corporation and licensed to Better Homes and Gardens Real Estate LLC.



## Fall Festival and Craft Fair a Huge Success!

On October 19th, a record amount of residents came out to enjoy a beautiful Saturday of games, rides, shopping and FUN at our annual Fall Festival and Craft Fair. Farmer Brown performed his infamous magic show while balloon artists and face painters entertained the kids. Over 40 vendors braved the muddy soccer field to showcase their crafts and home based businesses while handing out candy to trick-or-treaters.

All sorts of costumed cuties wowed the judges, but only three kids took home a \$25 gift card as our winners. Congratulations to Makenna Boyd, Tanner Western, and Nathan Gonzalez for winning your age categories.

A huge thank you to Humble ISD Cosmetology for manning the "scary hair" booth! The students went through a record number of colored hairspray cans in a very fast amount of time!

Another huge thank you to Michelle Auenson for making slime with our kids! Your service and skills as a former science teacher are much appreciated.

And finally, our events would not happen without the generous support of Atascocita High School National Honors Society, Summer Creek National Honors Society, and last but not most definitely not least, the incomparable Atascocita High School JROTC, who without fail, supply a large amount of eager and ready-to-work volunteers who give up many Saturdays a year to help Eagle Springs with a variety of events. THANK YOU JROTC!



# Outstanding Service.



*Providing exceptional Real Estate  
Services for Buyers and Sellers with  
Outstanding Service Delivery.*

*Top 20 Agent RE/MAX Associates  
Northeast 2012*

*RE/MAX 100% Club*



[www.LornaCalder.com](http://www.LornaCalder.com)



INSTITUTE for  
LUXURY HOME  
MARKETING

MEMBER



**RE/MAX**  
*Associates Northeast*

Lorna Calder | 281-361-2280

2940 Oak St Kingwood TX 77339

281-358-8888 Main



# WHCRWA?

Have you ever wondered “What is that pesky fee on my water bill that says WHCRWA?” or “Why would I have any fees from a West Harris County entity when my home is in the Northeast portion of the county?”

Well let’s start by going back in time.....Back to the 1940’s. The area now referred to as the Greater Houston area had been booming with growth, largely as a result of oil and gas production. However, with that growth, the area was experiencing subsidence - the sinking of land. Studies began to show that the withdrawal of water from underground aquifers were contributing to the subsidence of land in a human-induced way. As a result of these studies and the reported risks associated with continued subsidence, activists began to petition for a change.

In 1975, the Texas legislature created the Houston Galveston

Coastal Subsidence District (HGSD) to end subsidence – the sinking of land around the area – with a focus on the impacts of groundwater withdrawal. They were given the power to restrict groundwater withdrawals by any cities or utility districts in order to meet the objectives. The alternative to groundwater is surface water, essentially the water in lakes and rivers, which is then purified and used the same as underground water. So, fast forward to the early 2000’s, the HGSD instituted a groundwater reduction plan. The GRP (Groundwater Reduction Plan) required that: (a) by 2010, 30% of the water used in the Houston Galveston area should be surface water,

*(Continued on Page 8)*

## Benita LASH STUDIO

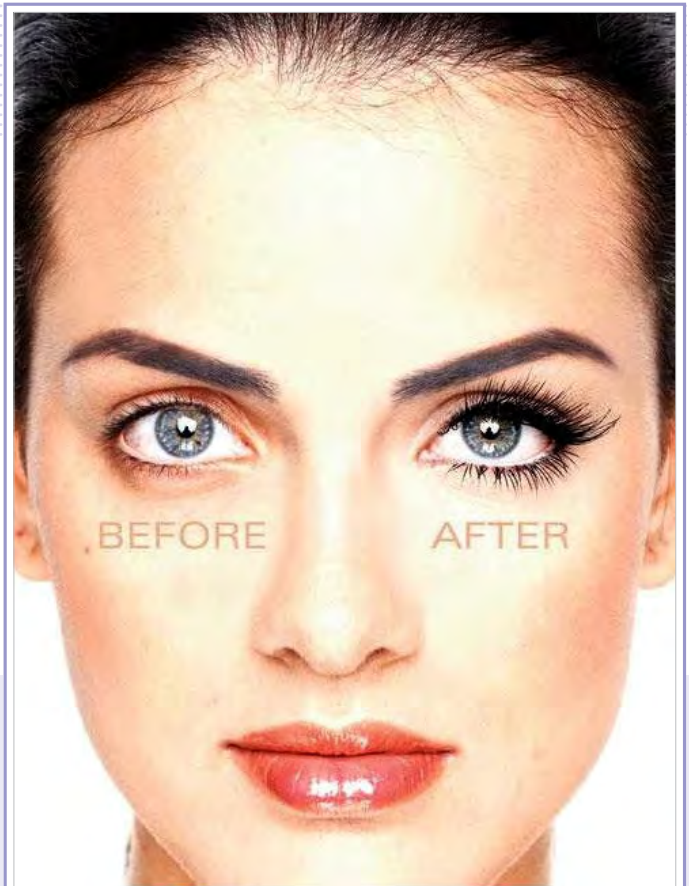
Benita lash studio uses only the finest award-winning, physician-developed, medical-grade lash extension products available.

Add thickness, length, and color to your lash line, and roll out of bed gorgeous.

Water proof, sweat proof, no need for mascara, thickens lash line, minimal maintenance, lengthens each natural lash.

18321 W. LAKE HOUSTON PKWY.  
SUITE 305  
HUMBLE, TX 77346

To Make an Appointment Call: 281.881.1811



# Now Offering Orthopedics and Sports Medicine Services

**We're giving you access to even more specialized care.**

Orthopedic and sports medicine specialists have joined our suite of services that includes primary care physicians, a 24-hour ER, cardiologists, advanced imaging and more. We're revolutionizing the concept of accessible care. It's convenience without compromise.

**14201 East Sam Houston Pkwy N.  
Houston, TX, 77044**

**Located at Beltway 8 and West Lake Houston Parkway  
in front of Summer Creek High School**

**281.436.8800 • [memorialhermann.org](http://memorialhermann.org)**



WHCRWA? (Continued from Page 6)

(b) by 2020, 70% of the water used should be surface water, and then finally (c) by 2030, 80% of the water used should be surface water as opposed to ground water. Rather than each and every water district or city converting to partial surface water, two regional authorities were created (NHCRWA and WHCRWA – North Harris County Regional Water Authority and West Harris County Regional Water Authority). So, with this creation, each of the two authorities were required to meet the mandate from the HGSD, not each water district. The two authorities both then created a Groundwater Production Plan that outlined specifically how they would meet the requirements – what infrastructure would need to be built, which areas would use the new surface water infrastructure, and which areas might remain on groundwater.

These two entities have boundaries that include some of the water districts in the area. However, there were many districts that do not fit within the boundaries of either district. Those districts – including MUD 106 and MUD 290 were required to

join one of the two reduction plans but allowed to choose which one. The Eagle Springs districts, the MUDs, petitioned to join the West Harris County's Groundwater Reduction Plan as opposed to the North Harris County's Groundwater Reduction Plan based on a review of the two plans, their proposed changes, and the costs. While we don't receive actual water from the West Harris County authority, we are subject to the plans to reduce groundwater and any fees they put in place in order to implement that plan.

The WHCRWA charges a per gallon fee to every member of their Groundwater Reduction Plan regardless of their location within the district's boundaries (7 districts are not included in the boundaries but chose to join the reduction plan for the west. This cost from the WHCRWA is then passed through to residents on the bill based on a per gallon usage. This particular fee is decided at the meetings for the WHCRWA and information about their district and meetings can be found at <http://whcrwa.com/vic/>

And thus, starting from 1940's to now, what began as concern over the sinking level of land compared to sea level has now become the fee you see on your water bill as WHCRWA.

## EAGLE SPRINGS MARKET UPDATE

Greetings Neighbors,

With 2013 coming to a close, I'm sure your schedule is jammed packed like most. Putting your house on the market may be the last thing on your mind. However, if you find yourself in that situation, rest assured, there are buyers in our market right now, just waiting for the right home to come on. As you can see in this chart, for Eagle Springs, there is less than a 2 month supply of inventory. Prices have been rising, days on the market have been dropping and interest rates are still great for buyers. Less competition and continued buyer activity could mean a shorter timeframe on the market and less stress for you.

Now I realize that for some, there isn't an immediate need to list/sell, so you are targeting the spring/summer season. This is traditionally our busiest selling season, but there are things you can be doing now and after the first of the year to prepare your home for the market and ensure that you stand out from the extra competition that the peak selling season will bring.

Whatever your situation, I would love to schedule a time to meet with you to review the market, establish your to do list and show you all that The Davis Group has to offer. I look forward to your call!

MONTHS OF INVENTORY	SOLD DATA PREVIOUS YEAR		CURRENT ACTIVE DATA	
	# SOLD	AVERAGE PRICE	# ACTIVE	AVERAGE PRICE
1.9	213	\$224,241	34	\$294,671

Note: Months of Inventory estimates the number of months it will take to deplete the current active inventory based on the prior 12 months sales activity.

**Niki Davis**  
Realtor

The Davis Group  
Keller Williams Realty Northeast  
832.523.0240

[Niki@NikiDavis.com](mailto:Niki@NikiDavis.com)

20665 W. Lake Houston Pkwy., Humble, TX 77346



**DG**

The DAVIS Group

**kw**

KELLERWILLIAMS.



# Your Pride. Our Joy.

## Just Ask a Dad.

*"Our son absolutely loves going to school! The people involved in his education are amazing, and they are fantastic with children. Every time we pick him up, the smile on his face lets my wife and I know that we made the right choice in giving him this opportunity."*

**Jonathon, Primrose Dad**

- Proprietary Balanced Learning® System
- Assessment shows Primrose students perform at about twice the level of their peers
- Exclusive Safe School Plan (strict health, safety, and security standards)

### **Primrose School of Eagle Springs**

281.852.8000

[PrimroseEagleSprings.com](http://PrimroseEagleSprings.com)

### **Primrose School of Lake Houston**

281.812.6361

[PrimroseLakeHouston.com](http://PrimroseLakeHouston.com)



## **Come Visit Us!**

Educational Child Care for Infants through  
Private Kindergarten and After School



**Active Minds, Healthy Bodies,  
and Happy Hearts®**



# **Primrose Schools®**

**The Leader in Educational Child Care®**

Each Primrose School is a privately owned and operated franchise. Primrose Schools and The Leader in Educational Child Care are trademarks of Primrose School Franchising Company. ©2013 Primrose School Franchising Company. All rights reserved.

# SOCIETY OF ST. STEPHEN ANGELS

This year, Eagle Springs has chosen to adopt 75 “angels” from the Society of St. Stephen. These children in need have created a wish list of items they would like from Santa, most of which total about \$30. These angels can be found on the Christmas tree in the Athletic Clubhouse.

To pick out your angel, come by the clubhouse during office hours. All items can be returned during office hours or at WinterFest, and the deadline to turn your angel gifts in is December 15th during office hours.

Help make another child’s holiday a brighter one by sponsoring a Society of St. Stephen Angel!



**GREAT PRICES, FAST SERVICE AND QUALITY WORK**



# UPGRADE YOUR RIDE TODAY!



- **WHEELS AND TIRES**
- **SUSPENSION LIFTS**
- **WINDOW TINT**
- **TOOL BOXES**
- **GOOSENECK HITCHES**
- **HID LIGHTING**
- **FENDER FLARES**
- **SPRAYED ON BEDLINERS**
- **STEREO**



**SERIOUS TRUCK ACCESSORIES SINCE 1986**

Great Prices \* Fast Service \* Quality Work

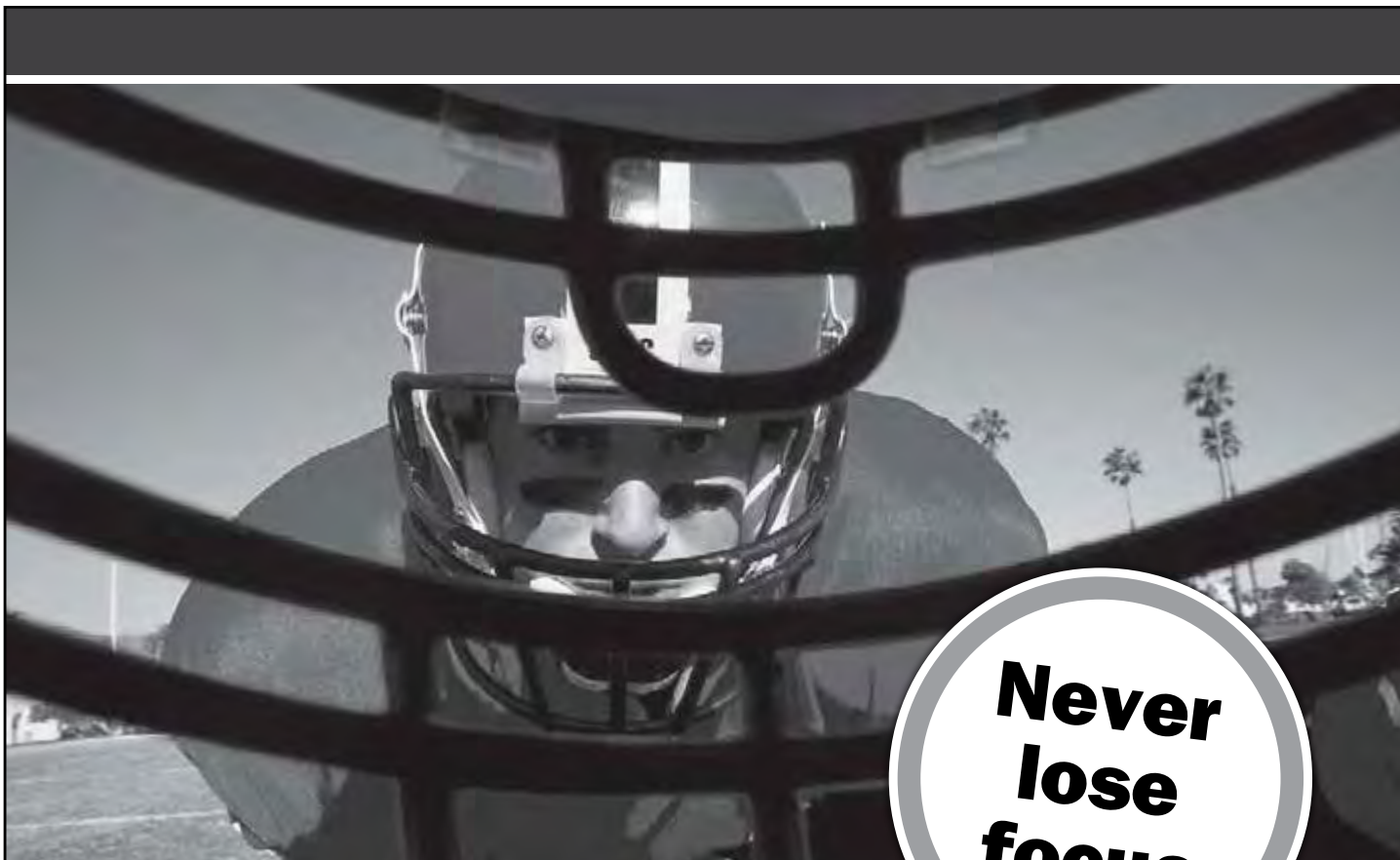
12954 Beaumont Hwy 90 (Old 90) Houston, TX 77049

Only 10 minutes from Summerwood. Left on Beltway 8 to Tidwell Exit

Owner: Rusty Montgomery

# 281-459-1917

[www.briantintshop.com](http://www.briantintshop.com)



**Never  
lose  
focus**

## **We develop comprehensive game plans that put athletes back in action.**

At multiple locations across the Greater Houston area, the Memorial Hermann Sports Medicine team assists all types of athletes in achieving their competitive best. From injury prevention to minimally invasive orthopedic surgeries to post-injury rehabilitation, our sports medicine experts deliver Houston's most complete care.

**When your game takes an unexpected twist, visit one of the sports medicine trained orthopedic surgeons affiliated with Memorial Hermann Northeast Hospital so they can help you get back in the game. Call 713.222.CARE for a referral today.**

Memorial Hermann Northeast  
18951 Memorial N.  
Humble, TX 77338

**[memorialhermann.org](http://memorialhermann.org)**

**MEMORIAL  
HERMANN**  
Sports Medicine



# SOCIETY OF ST. STEPHEN FACT SHEET

### What do we do?

- Society of St. Stephen is a community outreach agency serving people living in the Humble, New Caney and Splendora school district boundaries.
- We are 100% volunteer- we have no paid employees or positions.
- We are open Mondays, Wednesdays and Fridays from 9 am- 11:30 am or until we have served the first 36 clients and typically are closed on school holidays except for the summer.
- We provide, at no cost to our clients, an average of 400 individuals each week with food, clothing and an average of 25 families a week with limited financial assistance (primarily utility and medication assistance).
- Clients can visit SOSS once every 30 days for food, once every 60 days for clothing and once every 12 months for financial assistance. A typical grocery allotment includes canned vegetables, canned fruit, canned meat, rice, beans or pasta,

bread, ½ gallon of milk and cheese. Fresh fruits, vegetables and personal products are given when available. We also supply diapers (as needed), laundry soap, toilet paper and bath soap to all families.

- We have three special projects a year. Our Back to School drive supplies over 850 children each year with school supplies, a \$15.00 shoe voucher for one pair of new shoes and new backpacks. For Thanksgiving and Christmas we provide over 500 food baskets for a family holiday dinner and gifts for over 1,200 children age 1-16.

### How do we do it?

- We receive donations and monetary gifts from individuals, philanthropic groups, churches, schools, businesses, corporation volunteer grants and our major fundraiser, the SOSS women's tennis tournament held in the spring.

*(Continued on Page 14)*

## ADVERTISE YOUR BUSINESS TO YOUR NEIGHBORS

*Support Your Community Newsletter*

Jackie Owens  
Sales Representative  
832-482-8132  
jowens@PEELinc.com



PEEL, INC.  
community newsletters

www.PEELinc.com 1-888-687-6444

Brilliant Energy Texas OUC #10140

# BRILLIANT ENERGY

*Easy Online Sign-Up at*

**BrilliantElectricity.com**

USE "NEIGHBORHOOD NEWSLETTER" AS REFERRAL

BRILLIANT ENERGY = SERIOUSLY LOW RATES

BRILLIANT ENERGY'S ELECTRICITY RATES CHALLENGE  
THE RATES OF EVERY OTHER PROVIDER IN TEXAS!

LOCK-IN A LOW ELECTRICITY RATE FOR  
UP TO 3 YEARS

BRILLIANT ENERGY IS RECOMMENDED BY TEXAS ENERGY  
ANALYST, ALAN LAMMEY THE HOST OF THE "ENERGY  
WEEK" RADIO SHOW ON NEWSTALK 1070 KNTH!

Ask the "Energy Analyst"  
**281.658.0395**

**GREAT BUSINESS RATES TOO!**



Tis' the Season to

# Ship & Save

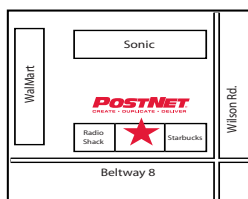


To Do:

- ✓ Pack and Ship Gifts
- ✓ Mail Holiday Cards
- ✓ Order Personalized Photo Gifts

## POSTNET

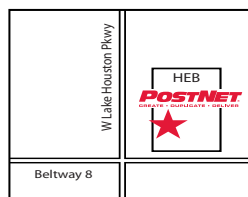
Your Neighborhood Business Center.



### At Beltway 8 & Wilson Rd Walmart Shopping Center

4830 Wilson Road, Suite 300  
Humble, TX 77396  
**281-441-7638** | TX203@postnet.com  
www.postnet.com/TX203

OPEN: Mon. - Fri. 8:30am - 6:30pm, Sat. 9am - 2pm  
Join Us On Facebook! Search PostNet Lake Houston Area



### At Beltway 8 & W Lake Houston Pkwy Next to H-E-B Summerwood

12680 West Lake Houston Pkwy,  
Houston, TX 77044  
**281-454-7455** | TX219@postnet.com  
www.postnet.com/TX219

OPEN: Mon. - Fri. 9am - 7pm, Sat. 10am - 3pm  
Join Us On Facebook! Search PostNet Lake Houston Area

## \$7 OFF

**Any Purchase of \$30 or More**

greeting cards | invitations | calendars  
personalized photo gifts | and more!

All offers exclude USPS services & products. One coupon per customer per visit. Valid at participating PostNet Centers. Not valid in combination with any other offer. Some restrictions may apply.

## 29¢

**Color Copies**  
8.5" X 11" white paper, single-sided,  
full-service. No limit.

All offers exclude USPS services & products. One coupon per customer per visit. Valid at participating PostNet Centers. Not valid in combination with any other offer. Some restrictions may apply.

## Your Holiday Shipping Headquarters!

Multiple carrier options • Expert packaging for fragile or oversized gifts  
Short lines and outstanding customer service

## Need Last-Minute Holiday Printing?

We offer custom printing for your holiday greeting cards, invitations and personalized photo gifts. Visit us today or upload your files online at [tx203.postnet.com](http://tx203.postnet.com) or [tx219.postnet.com](http://tx219.postnet.com).

## 20% OFF

UPS® | FedEx® | DHL®

All offers exclude USPS services & products. One coupon per customer per visit. Valid at participating PostNet Centers. Not valid in combination with any other offer. Some restrictions may apply.

St. Stephen (Continued from Page 12)

- Our 150+ regular volunteers give an average of 15 hours per month of their valuable time to SOSS.
- In recent months\*, our disbursements for utilities and medical assistance have averaged \$1,233 per week. Our food costs have averaged \$616 per week, which we supplement with large discounts from the Houston Food Bank and local food drives and/or donations. (\*Based on data December 2011 through November 2012)

### How can you help?

- **DONATE!** We always need gently used clothing, linens and small household items and please use your Kroger share card and Randall's Good Neighbor cards designated for Society of St. Stephens.
- **VOLUNTEER!** We have a wide variety of places to help, working with clients or working behind the scenes, on a regular basis or on seasonal projects, and flexible scheduling from a couple of hours a month to more.
- **GIVE!** Financial contributions can be mailed directly to us, or designated to SOSS and dropped in the collection plate at Kingwood United Methodist Church. Society of

St. Stephen is a 501c3 agency.

### For more information, contact us!

Lynn Harper, Director SOSS  
1799 Woodland Hills Drive  
Kingwood, Texas 77339  
281-358-7722  
pharper5@embarqmail.com  
website link: [www.kingwoodumc.org/soos](http://www.kingwoodumc.org/soos)

## Happy Birthday



**Yiréh Gotay-Blanco**

11 years old

Happy Birthday Yiréh  
With love Daddy,  
Mom and Adonay.

# Carpet Connection Inc.

Serving the Humble  
area for over 23 years

## FREE Furniture Moving Carpet Removal Estimates

1706 FM 1960 E. Bypass  
Humble, TX 77338  
Phone 281.446.3300  
Fax 281.446.3981  
[www.carpetconnections.com](http://www.carpetconnections.com)  
**Family owned & operated**

Handscraped  
Wood  
\$5.99 sq. ft.  
Installed

Carpet  
Connection Inc.

## \$100.00 OFF

coupon to expire Feb 1, 2014  
see stores for details



# 11 Reasons to List During the Holidays

1. People who look for a home during the Holidays are more serious buyers!
2. Serious buyers have fewer houses to choose from during the Holidays and less competition means more money for you!
3. Since the supply of listings will dramatically increase in January, there will be less demand for your particular home! Less demand means less money for you!
4. Houses show better when decorated for the Holidays!
5. Buyers are more emotional during the Holidays, so they are more likely to pay your price!
6. Buyers have more time to look for a home during the Holidays than they do during a working week!
7. Some people must buy before the end of the year for tax reasons!
8. January is traditionally the month for employees to begin new jobs. Since transferees cannot wait until Spring to buy, you must be on the market now to capture that market!
9. You can still be on the market, but you have the option to restrict showings during the six or seven days during the Holidays!
10. You can sell now for more money and we will provide for a delayed closing or extended occupancy until early next year!
11. By selling now, you may have an opportunity to be a non-contingent buyer during the Spring, when many more houses are on the market for less money! This will allow you to sell high and buy low!



**Sold at \$176,900**  
**18406 Lost Maples**



**Just Reduced To \$239,900**  
**18515 Wild Basin**



**Just Listed at \$155,000**  
**17215 Mitchell Pass**

THE *Tracy Montgomery* TEAM



**Sandy Beatte**  
**Cell: 713.503.8110**

**Tracy Montgomery**  
**Cell: 713.825.5905**

**Denise Hernandez**  
**Cell: 832.788.2265**

*If you know of someone who would appreciate the level of service my Team provide, please call me with their name and business number. I'll be happy to follow up and take great care of them.*

**KELLER WILLIAMS**  
REALTY  
**NORTHEAST**

**Your  
Neighborhood  
Realtors**

**281.812.8265**  
**www.tracysoldit.com**  
**tracy@tracysoldit.com**  
20665 W Lake Houston Parkway  
Humble, TX 77346



**Please remember to pick  
up after your pets and  
“scoop the poop”**

## Affordable Shade Patio Covers



We specialize in custom built patio covers,  
decorative & stamped concrete,  
cedar & treated pine shade arbors,  
insulated aluminum patio covers & arbors.



*Creating Comfort for Outdoor Living...  
with Affordable Shade Patio Covers!*



Visit our galleries to view hundreds of photographs  
of finished projects...from very happy customers.

**AffordableShade.com**  
**713-574-4648**



# SHOW OFF YOUR SUPERHERO

Parents this is your chance to brag on your kiddos. We want pictures of your kids doing everyday things, school events, plays, sports, etc. Send in your pictures to be featured in the *Eagle Springs*.

E-mail your pictures to [Help@InsideEagleSprings.com](mailto:Help@InsideEagleSprings.com) by the 8th of the month.







At no time will any source be allowed to use The Talon contents, or loan said contents, to others in anyway, shape or form, nor in any media, website, print, film, e-mail, electrostatic copy, fax, or etc. for the purpose of solicitation, commercial use, or any use for profit, political campaigns, or other self amplification, under penalty of law without written or expressed permission from Peel, Inc. The information in The Talon is exclusively for the private use of the Eagle Springs HOA and Peel, Inc.

**DISCLAIMER:** Articles and ads in this newsletter express the opinions of their authors and do not necessarily reflect the opinions of Peel, Inc. or its employees. Peel, Inc. is not responsible for the accuracy of any facts stated in articles submitted by others. The publisher also assumes no responsibility for the advertising content with this publication. All warranties and representations made in the advertising content are solely that of the advertiser and any such claims regarding its content should be taken up with the advertiser.

\* The publisher assumes no liability with regard to its advertisers for misprints or failure to place advertising in this publication except for the actual cost of such advertising.

\* Although every effort is taken to avoid mistakes and/or misprints, the publisher assumes no responsibility for any errors of information or typographical mistakes, except as limited to the cost of advertising as stated above or in the case of misinformation, a printed retraction/correction.

\* Under no circumstances shall the publisher be held liable for incidental or consequential damages, inconvenience, loss of business or services, or any other liabilities from failure to publish, or from failure to publish in a timely manner, except as limited to liabilities stated above.

## BUSINESS CLASSIFIEDS

**WINDOW TREATMENTS** A Lone Star Service Blinds & Shutters. Residential, Commercial & Contract Dealer. Roller Shades, Solar Screens, Storm Roller Shutters, Outdoor Curtains & Drapes. Sales - Installations - Cleaning - Repairs Weekdays 6 pm to 9 pm Weekend til 9 pm. 281-787-4145

### *Classified Ads*

Business classifieds (offering a service or product line for profit) are \$50, limit 40 words, please contact Peel, Inc. Sales Office at 1-888-687-6444 or [advertising@PEELinc.com](mailto:advertising@PEELinc.com).

## Noonan Murphy Team #1 RE/MAX Associates Northeast Team



**RE/MAX Lifetime Achievement Award**  
**Platinum Club • RE/MAX Hall of Fame**  
**100% Club • Interior Decorator**

**RE/MAX Associates Northeast**  
**Barbara Noonan**  
(713) 582-6366  
[banoonan@earthlink.net](mailto:banoonan@earthlink.net)  
**Suzanne Noonan Murphy**  
(281) 610-7308  
[noonansuzanne@hotmail.com](mailto:noonansuzanne@hotmail.com)  
**Eagle Springs Resident**





**NOT AVAILABLE  
ONLINE**

## SUDOKU

*View answers online at [www.peelinc.com](http://www.peelinc.com)*

8		7			2		4	9
			3			7	1	
				6				
5				1		2		
			5		7			
	6							8
	7						8	
4				3	5			
	2	1			8			

*© 2006. Feature Exchange*

The goal is to fill in the grid so that every row, every column, and every 3x3 box contains the digits 1 through 9. Each digit may appear only once in each row, each column, and each 3x3 box.



**We solve all the pieces to the puzzle.**

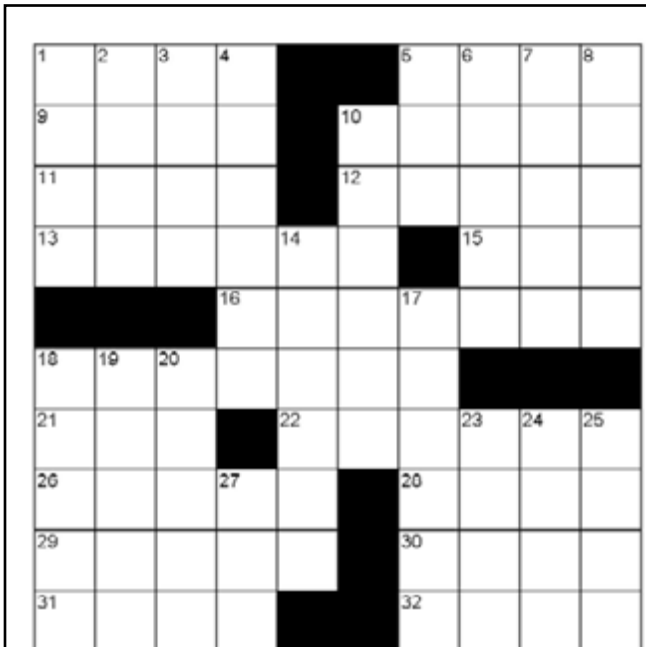
Call Today to Get Started On All Your Printing Needs.

**1-888-687-6444  
Ext. 23**



**PEEL, INC.**  
printing & publishing  
EXPERIENCE MATTERS doing business for 30+ years.

## CROSSWORD PUZZLE



### ACROSS

1. Charge
5. Syrian bishop
9. Against
10. Landing
11. Leaves
12. Boom box
13. Allure
15. African antelope
16. Polite
18. Leafy green
21. Marry
22. Esophagus
26. Woken
28. Goad
29. Type of tooth
30. Refer
31. Posttraumatic stress disorder
32. Sieve

### DOWN

1. Nativity scene piece
2. Competition at the Greek games
3. Capital of the Ukraine
4. Symbol
5. Expression of surprise
6. Emblem
7. Pickle juice
8. A ball out of bounds (2 wds.)
10. Twist violently
14. Ripper
17. Strums
18. Slough
19. Ross \_\_\_, philanthropist
20. Gods
23. Brand of sandwich cookie
24. Seaweed substance
25. Cabana
27. Blue

View answers online at [www.peelinc.com](http://www.peelinc.com)

© 2006. Feature Exchange

# Treat Yourself!



## TEXASDIRECTAUTO.COM

We make buying and selling fun.

# Sell Us Your Car!



**PEEL, INC.**

308 Meadowlark St. South  
Lakeway, TX 78734

PRSR STD  
U.S. POSTAGE  
PAID  
PEEL, INC.

EAG

# Clint Sells Eagle Springs

*I put you in your place!*



## Clint Reynolds, REALTOR

281-414-9820 (C) 281-852-4545 (O)

Google "Clint Reynolds Realtor"

[www.soldbyclint.com](http://www.soldbyclint.com)

'Like' Clint on Facebook: [facebook.com/sold.by.clint](https://www.facebook.com/sold.by.clint)

Eagle Springs resident for 8 years.

**2012 TOP PRODUCER FOR VOLUME AND UNITS!**

Ask about my free local move! \*restrictions apply\*

**SALE PENDING!**



12851 Whistling Springs Dr

**SALE PENDING!**



17223 Lowell Lake Ln

**BACK ON THE MARKET!**



12406 Jamestown Crossing Ln

**Call today for a no obligation home consultation.**

**SOLDBYCLINT.COM**

*The market is moving at an incredible pace this year. Buyers need houses and listing are in short supply.  
If you have considered selling, but were waiting for the right opportunity, give me a call today. -- Clint*

See all client feedback at [www.har.com/clintreynolds](http://www.har.com/clintreynolds)