

JUNE *Yards* OF THE Month

8703 WHEATLAND DRIVE



Laverne and Mike Barrow have lived in Willowbridge for 20 years. They have two grown sons and daughter in laws, two grandsons and one granddaughter. Mike is a new home sales manager for Beazer Homes and Laverne has worked long term as an executive assistant for the same gentleman and is lucky enough to get to work from home (no traffic hassles!).

The Burrows have two fur babies, one a large Labrador and the other a Labrador/ terrier mix, both rescues. Laverne has been instrumental in rescuing and returning to their homes, several dogs over their years here.

Not new to the YOM award, they have been the monthly recipient three times in the past and have placed several times in the Christmas decoration categories (think Santa Claus going down the chimney!). Laverne stated that they are very proud of our neighborhood and its continued upkeep as it ages.

9206 SKIPPING STONE LANE

Andrea and Michael Holste have lived in Stonebridge for 17 years. Their family includes three fur babies, two giant schnauzers and a terrier mix. Andrea was the original committee chair of the Welcoming Committee.

In 2001, the Holstes began hosting high school exchange students. They have the students for one full school year and have had three from Germany and one from Switzerland.

Another repeat winner, the Holstes won YOM approximately ten years ago. They credit Antonio's Lawn Care and Maintenance for their current award.



Willowbridge - Stonebridge

IMPORTANT NUMBERS

All Emergencies.....911
Harris County Sheriff..... 713-221-6000
Harris County Animal Control 281-999-3191
Cy-Fair Hospital..... 281-890-4285
Street Lights & Outages - CenterPoint Energy 713-207-2222
CenterPoint Energy..... 713-659-2111
Newsletter Publisher
Peel, Inc. www.PEELinc.com, 888-687-6444
Advertising.....advertising@PEELinc.com, 888-687-6444
Poison Control Center 800-222-1222
AT&T - Repair 800-246-8464
Billing 800-585-7928
Trash – Royal Disposal & Recycle 713-526-1536
Vacation Watch - Harris County District 5 281-290-2100
W. Harris County MUD #11 281-807-9500
Willow Place Post Office 281-890-2392
Willowbridge Website www.willowbridgehoa.com
Cable/Internet/Phone...COMCAST 713-341-1000

ASSOCIATION DIRECTORY

Beautification Committee
Jennifer Y'Barbo jhybarbo@subhou.com
Homeowners Association 281-497-4320
Graham Mgmt - Tracy Graham
..... grahammanagement@sbcglobal.net
Clubhouse/Reservations
Tammy Puerta 281-497-4320
Pool Parties/Tags
Sweetwater Pool Co. 281-988-8480
Marquee Coordinator
Barbara Lallinger..... 281-890-8464
Newsletter Coordinator
Barbara Lallinger & Rebecca Peters
..... willowbridgenews@gmail.com
Security Coordinator
Julie Dubros..... 281-794-9032
..... martin@juliedubros.com
Website Coordinator
Angela Doray..... willowbridgehoa@live.com
Yard of the Month Committee
Nominate your favorite at: willowbridgehoa.com or Contact
Jennifer Y'Barbo jhybarbo@subhou.com
Soccer Field Reservations
Terese Joubran tmjoubran@gmail.com
Lost Pet Coordinator
Sonia Moore msrco@aol.com, 281-955-8068
Welcoming Committee
Gracie Galvan 281-732-0009
..... galvangracie@hotmail.com

BOARD OF DIRECTORS

Jennifer Y'Barbo President
Julie Dubros Vice President
George Schaudel Secretary
Rebecca Peters Treasurer
Brian Fisher Director

HOA INFORMATION

Willowbridge Homeowners Association Inc. - Graham Mgmt
Tracy Graham 281-497-4320
E-Mail grahammanagement@sbcglobal.net
Fax 281-870-1654
If you have any questions or comments regarding the
neighborhood please contact the numbers above.

HOA MEETINGS

Willowbridge/Stonebridge Homeowner's Association
Meetings are held the fourth Thursday of each month at
the community clubhouse at 7:00 pm.

WELCOMING COMMITTEE

The Welcoming Committee meetings are the last Monday
of each month.

HARRIS COUNTY ROAD AND BRIDGE

To report street or curb damage, missing/damaged street
signs and street flooding: (281) 353-8424 or www.hcp4.net.
If a resident wants to request a new sign or replace a
damaged one, they have to go online and fill out a request.

BUSINESS CLASSIFIEDS

PIANO LESSONS: Developing a love of learning in aspiring
musicians through presenting fun and inspiring music. Kristin
Peters. 713-502-4248. Kristinpeterspianostudio@yahoo.com.
www.kppianostudio.com. Winchester Country. Call now to
schedule your trial lesson. If you change your mind its free!

Business classifieds (offering a service or product line for profit)
are \$50, limit 40 words, please contact Peel, Inc. Sales Office @
888-687-6444 or advertising@PEELinc.com.

BIG WELCOME TO OUR NEW NEIGHBORS!

Stoney Lake
Bauman family

Willowbridge
Baumanis family

Therrell
Johnson family

Stoney Lake
Feng family

Refugio
**Goss & Nesloney
family**

Provided by the
Welcome Committee

MONTHLY MEETINGS A THING OF THE PAST

By Barbara Lallinger

After much thought and discussion, the board has voted to discontinue meeting monthly. Effective, January 2015, meetings will be held quarterly (see schedule below). Everyone is extremely busy these days and the monthly meetings had evolved into pretty much the same 5 to 7 residents attending most of them. Today's technology allows for most of the board's business to be transacted via texting and/or telephone. If a situation arrives requiring a meeting before the regularly scheduled date, a special meeting may be held.

There will not be a monthly meeting in August. In the past, this month has been designated as a planning meeting (attended by board members and the management company only) to formulate next years' budget. The next regularly scheduled meeting

will be held, Thursday, September 25. The ANNUAL meeting will be held Thursday, October 23 (unless otherwise notified). PLEASE REMEMBER, this meeting requires 10% of homeowners attendance in person or by proxy to legally conduct business brought before the board (most importantly, election of new officers and budget approval – find out how your \$\$\$ are being utilized). This 10% equates to 83 live bodies or proxies of members in good standing with the HOA. Please mark your calendars for this most important meeting.

MEETING SCHEDULE FOR 2015

(4th Thursday of the month)

January 22 · April 23

July 23 · October 22 (Annual)



Mark Prehoda
RE/MAX Professional Group
Direct **281.855.4900**
Cell **281.851.7405**



Jean Gonzalez
Prehoda Team
Realtor
Cell **832.334.1477**



THE MARKET IS HOT! HOME VALUES ARE UP!

NEIGHBORHOOD INVENTORY IS VERY LOW.

If you are thinking of
selling, give us a call for a free
market analysis of your home.

Over 20 years
experience in the
local market!



TREES

CHAPTER 4 Pine Trees

(Originally published in Nov. 1999 by Glen Telge)

East Texas is pine forest country and you can see the tall pine trees everywhere. Pine trees are characterized by having leaves in the form of clustered needles and fruit cones that bear seeds. Most of the pines in the Houston area are the fast growing Loblolly Pine - *Pinus taeda*. The Loblolly Pine has three (occasionally two) 6-9 inch needles in each cluster.

The Slash Pine - *Pinus elliottii*, which is not native to Texas, is often planted for landscaping and commercial lumber production. The Slash Pine has two or three 8-12 inch long, lustrous needles with a membranous sheath at the base of each cluster. They are very susceptible to fusiform rust, which disfigures the tree's trunk and branches.

Two other native species, the Longleaf Pine - *Pinus palustris*, with 9-15 inch long needles and the Shortleaf Pine - *Pinus echinata*, with 3 inch long needles were once common in East Texas, but are now pretty rare, especially around the Houston area. Two smaller, ornamental species, the Japanese Black Pine - *Pinus thunbergii* and the Spruce Pine - *Pinus glabra*, are sometimes used for landscaping in Houston. Local nurseries typically carry the Loblolly, Slash and Japanese Black Pines.

The healthy looking pines planted along West Road at Willowlake appear to be some variety of Loblolly Pine. The Loblolly Pine exhibits significant variation within its species. While most varieties have a tall, slender trunk with a few limbs near the top quarter of the tree, other varieties have a tall, fat trunk with heavy limbs most of the way up the tree (e.g. Bull Pine variety). Soil conditions are probably the largest factor in determining which varieties will grow where. The Loblolly Pine's primary pest is the Pine Bark Beetle.



The Lost Pines of Bastrop in Bastrop State Park, about 35 miles southeast of Austin, are an interesting extension of the East Texas Pine forest because they are more than 100 miles west of the East Texas Pine forest range. The Loblolly Pines that grow at Bastrop are generally shorter and more tolerant of drought than the East Texas pines.

If you have been camping and tried to use pine wood for your campfire you might have found that it burns well and keeps you warm, but it's not a very suitable wood for cooking a good cut of meat. For a better flavor, I suggest that you stick with firewood from a hardwood tree like oak or pecan. The wood's high sap content can also make it messy to handle.

The tallest Loblolly Pine on record in Houston is located at 4500 Woodway Drive and is 121 feet high, 8 feet in circumference, and has a 47 foot spread. The largest Loblolly Pine on record in Texas is near Beaumont and is 143 feet high, 14 feet in circumference, and has a spread of 86 feet.

THE SCHOOL ZONE

By Barbara Lallinger

SCHOOL STARTS AUGUST 25! The 2014-15 school year ushers in several new Gleason ES PTO board members with several returning for a second or third year in their position and/or a second, third and even fourth year for some in a different position (you know who you are...Lara Cheves).

President **Angela Podladnik**

VP Fall Fundraising **Lara Cheves***

Secretary/Parliamentarian **Jennifer Nobles**

VP Spring Fundraising **OPEN**-Picture Your Name Here!

VP Membership/Volunteers **Mr. Brice Espinosa**

VP Secondary Fundraising **Mandy Manuel**

Historian **Clara Van dyk**

VP Special Events **Kat Villegas**

Treasurer **Karen Primm***

Bilingual Liason **Zuri Echeverria**

**Denotes WBSB resident*

Many volunteers are needed to help with all of the events held throughout the school year (including hearing and vision screening. Remember, you do not have to have a child or grandchild enrolled in Gleason to volunteer; however, if you don't, you must qualify through the Partners in Education (PIE) office to become a "Global Volunteer". PIE can be contacted at (281) 894-3950. If you are retired or just have some free time on your hands, please consider volunteering. **YOU ARE WANTED AND NEEDED!**

OTHER DATES OF IMPORTANCE:

TIGER Express Day Saturday August 16

A - L : 9 -11:00 a.m. / M - Z: 1-3:00 p.m.

Orientation (PK & K) Tuesday, August 19 (evening)

Meet the Teacher (PK - 5th) Thursday, August 21 (evening)

Hearing & Vision Screening Tu, W, Th, September 23, 24, 25

ROMOCO

properties

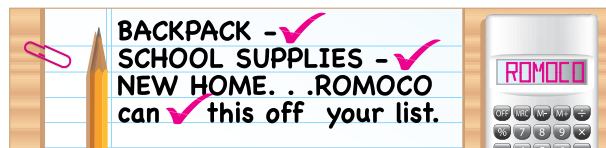
Exceeding Your Expectations

COMMUNITY & AREA SPECIALISTS

Call us today for all your real estate needs.



- Buy - Invest - Sell
- Residential - Land
- New Construction - Build on Your Lot or the Community of your choice



1 YEAR FREE HOME WARRANTY

VALUE UP TO \$535

Mention this ad and receive 1 year residential service contract with provider of your choice upon closing.



ROCHELLE O. BARROW,
ABR, ALHS, CHMS, SRES, SFR
Realtor® Partner
832.620.6644
rochelle@romocoproperties.com



LINDA MOGA
Broker Partner
281.793.6285
mogaco@aol.com



MEG TAYLOR
Realtor®
713.471.8823
megltaylor@yahoo.com



GERRI LARSEN
Realtor®
713.553.3091
gerri@romocoproperties.com



TRISH JOSEPHS
Realtor®
281.250.4750
trish@trishjosephs.com



TRACY YOUNG
Realtor®
832.771.0840
tyoung@tracyyoungtx.com

Willowbridge - Stonebridge

COMING SOON!!!

By Barbara Lallinger

EVERYONE LOVES A PARADE!

Our HOA board is hosting a neighborhood parade scheduled for Saturday, September 13, that will culminate at the clubhouse with hotdogs, chips and drinks. Also, the swimming pool will be open for one last summer swim. The parade is still in the planning process. Please watch the marquee and website for further details.

NATIONAL NIGHT OUT

NATIONAL NIGHT OUT will be celebrated on Tuesday, October 7. The HOA board is also in the process of planning

activities for this event. This year they plan to shake things up a bit by changing to a different contest. Some ideas that have been bantered around are: chili cook-off, pumpkin decorating contest, etc. (Hey..

Julie Dubros, former art teacher, didn't I hear you suggest an art contest a couple of years back?).

NEIGHBORHOOD GARAGE SALE

The board has also tentatively approved a Garage Sale to be held in October. Watch for details via the newsletter, marquee and website.

The Bodnar Team



Anna, Judy, Amanda

CyFair Area Specialists

Need to buy, sell or lease?

We advertise Willowbridge and Stonebridge

We will get results now!



- ♦ Over 1,000 homes sold
- ♦ 28 years experience
- ♦ Lo atendemos tambien en Español

Contact us for SOLD data in your neighborhood!

832-837-9940

www.BodnarTeam.com

BodnarTeam@outlook.com



GARY
GREENE

11734 Barker Cypress Rd. #116
Houston, TX 77433
832-334-0001



HURRICANE PLAN FOR PETS

July's issue of WillowTalk included an article on a Hurricane Plan for us...now we have one for our beloved pets.

IDENTIFICATION

Be sure your pet has a collar with a readable ID tag (not just your vet's vaccination tags!) with your cell phone number on it. It is also a good idea to have a friend's number on the tag. Micro-chipping your pet for permanent identification is highly advisable and is relatively inexpensive.

CONTACT INFORMATION

Keep a record of phone numbers of your vet, emergency clinic, pet sitter(s) and other providers in written form, readily available and also preprogrammed into your cell phone.



MEDICATIONS AND MEDICAL RECORDS

Store medications (suggested: (1) month supply) in a waterproof container. All pets should be current on their vaccinations. Written information: vaccination and other shot records, pets feeding schedules, medical conditions and any behavior issues, etc. should be kept in a sealed, waterproof plastic bag along with a recent photo of your pet in case you get separated—and to prove they are yours when you're reunited!

SUPPLIES

Food and water for (5) days for each pet, bowls and a manual can opener if your pet eats canned food. Keep extra gallons of water on hand to rinse your pet if it is

(Continued on Page 8)

DROWNING IS FAST & SILENT KEEP KIDS IN ARM'S REACH



WATER SAFETY TIPS AT
WWW.COLINSHOPE.ORG



Help keep your family safer around water.

Take our Water Safety Quiz.

www.colinshope.org/quiz

Colin's Hope Athlete Ambassadors needed.
Swim, bike, play tennis, hula hoop and more!

www.tinych.org/AthleteAmbassador



LAYERS OF PROTECTION CAN PREVENT DROWNING



CONSTANT
VISUAL
SUPERVISION



LEARN
TO
SWIM



WEAR
LIFE
JACKETS



MULTIPLE
BARRIERS
TO WATER



KEEP BACKYARDS
& BATHROOMS
SAFER



CHECK POOL
& HOT TUB
FIRST



STAY AWAY
FROM
DRAINS



BE SAFER
AT THE
BEACH



LEARN CPR
& REFRESH
SKILLS YEARLY

Willowbridge - Stonebridge

Hurricane Plan (Continued from Page 7)

exposed to flood waters and/or chemicals.

Have a sturdy collar and leash available. If you have to leave your home it is a good idea to have favorite toys and bedding on hand to alleviate stress. Also have travel size food and water bowls available.

Sturdy carriers are required to transport your animals. They should be large enough to allow your pet to stand comfortably, turn around and lie down. Your pet may have to stay in its carrier for hours at a time. If your pet has to go to a shelter, a carrier will most likely be required.

Don't forget the cat litter box, kitty litter, litter scoop and garbage bags to collect pet's waste.

Other useful items include paper towels, newspapers, plastic trash bags, grooming items and household bleach.

PET FRIENDLY HOTELS AND MOTELS

Before disaster strikes, find a pet friendly hotel or motel outside your immediate area. Ask about restrictions on size, species and number. Ask if the "no pet" policy is waived in an emergency. Listed below are online resources for pet friendly

hotels provided by the Humane Society:

bringfido.com
dogfriendly.com
doginmysuitcase.com
pet-friendly-hotels.net
pets-allowed-hotels.com

STAYING AT HOME

Last, but not least, if you decide to wait out the storm/hurricane and stay at home, do it safely. Identify a safe area where you and your pets can all stay together. Make that area animal friendly by closing off or eliminating unsafe nooks and crannies where frightened cats (and small dogs) may try to hide. Move dangerous items such as tools or toxic products that may be stored in that area. Be sure that all doors, pet doors and windows are closed and secured; close off open fireplaces and vents with heavy duty plastic and strong tape; and position pet carriers away from windows.

Don't forget...Preparation is the key! Once the disaster strikes stores will be out of a lot of these items.

kww MEMORIAL
KELLERWILLIAMS REALTY

joebrothers@sbcglobal.net

Use Cell Phone to take
picture of QR Code and
get FREE App of all MLS
Listings of houses for sale



or just call and I will send
the App to your phone
713-899-2062



JOE BROTHERS
BROKER ASSOCIATE



EACH OFFICE IS INDEPENDENTLY OWNED & OPERATED



CENCOMPASS
LENDING GROUP



**Mention this ad
and receive**

\$250.00

**credit toward closing
costs. Expires 9/30/14**

One Philosophy Sets Me Apart From The Competition:

A Proactive Mortgage Professional EQUALS Satisfied Clients!

My clients are my top priority. I am available through every step of the mortgage process. Every Client receives a Borrow Smart Analysis to ensure SMART and INFORMED choices regarding their investment is made. Let me use my expertise to help you.

I will find the right loan program that fits your needs.

Company website <http://www.elgloans.com>

My website www.cypressmortgages.com

Email ccrawford@elgloans.com

Call for a loan now! Free Consultation! (832) 334-7659

TALKING TRASH

By Barbara Lallinger

BUNDLE UP!

Many of us have been trimming our trees and gathering dead branches in the past few weeks, some due to need, some due to wind damage. Please abide by Royal's Requirements for proper disposal of these and other items such as tree stumps, plastic edging forms, etc. Also, please note that Royal has for the most part been picking up these items even if they don't conform to the rules, however; they are not required to do so. Pickup of non-conforming items also apparently depends on which workers are picking up that day, the load in the truck, the weather, etc.

Sometimes these non-conforming items are picked up, sometimes they are left, sometimes they are picked up on the next regularly scheduled pick up day and sometimes (as happened a few weeks ago at an address on Pearsall Dr.), they weren't picked up for two (2) weeks.

ROYAL'S REGULAR REQUIREMENTS:

- Items must be bundled and secured with string, rope, plastic, etc.
- Bundles can weigh no more than 40 pounds.
- Bundles can be no more than 3 to 4 feet in length.
- Tree limbs/branches must be 3 inches or less in diameter.

These requirements apply to other items (as noted above) such as plastic/metal edging, window blinds, etc.

BULK ITEM PICKUP

I have to agree with (and am sure you will, too), the Royal Disposal & Recycle website, old washing machines don't fit in the garbage can too well and they tend to rip even the most advanced plastic bags. That is why they have a special bulk item pickup day to haul away big items for us. Items should be placed near the garbage at the edge of your driveway on collection day (Tuesday

(Continued on Page 10)

Brilliant Energy Texas OUC #10140

BRILLIANT ENERGY

Easy Online Sign-Up at

BrilliantElectricity.com

USE "NEIGHBORHOOD NEWSLETTER" AS REFERRAL

BRILLIANT ENERGY = SERIOUSLY LOW RATES

BRILLIANT ENERGY'S ELECTRICITY RATES CHALLENGE
THE RATES OF EVERY OTHER PROVIDER IN TEXAS!

LOCK-IN A LOW ELECTRICITY RATE FOR
UP TO 3 YEARS

BRILLIANT ENERGY IS RECOMMENDED BY TEXAS ENERGY
ANALYST, ALAN LAMMEY THE HOST OF THE "ENERGY
WEEK" RADIO SHOW ON NEWSTALK 1070 KNTH!

Ask the "Energy Analyst"
281.658.0395

GREAT BUSINESS RATES TOO!



BASHANS PAINTING & HOME REPAIR

- Interior & Exterior Painting
- HardiPlank Replacement
- Sheetrock Repair
- Cabinet Painting
- Pressure Washing
- Fence Repair/Replacement
- Custom Staining
- Gutter Repair & Replacement
- Crown Molding
- Wallpaper Removal
- Wood Replacement
- Interior Carpentry
- Wallpaper Removal & Texture
- Garage Floor Epoxy
- Roofing
- Faux Painting

NO MONEY UP FRONT

20 Years Experience • References Available

Commercial/Residential

~ **FREE ESTIMATES** ~

BashansPainting@earthlink.net

FULLY INSURED

281-347-6702

281-731-3383 cell



HARDIPLANK®



Willowbridge - Stonebridge

R U CRAFTY?

By Barbara Lallinger

Well are you? Several of our residents have shown their hand with their door wreaths, holiday decorations, teacher appreciation luncheon decorations and party decorations in general.

Would you be interested in joining a crafting club? Plans are in the development stages with these general ideas:

Club will start after school begins (probably in mid-September). Club will meet once a month in a very central location (day or nighttime TBD). Crafters will provide their own materials, tools and anything else required to complete their project.

If remotely interested, please contact Barbara Lallinger at (281) 890-8464 ASAP. As many details will have to be worked out (such as acquiring the meeting venue).

Talking Trash (Continued from Page 9)

or Friday). Items will be picked up at no charge and are limited to one (1) item per week, per home. Oversized items and/or multiple items are subject to additional fees.

EXCLUDED ITEMS

These items are always excluded from any trash pickup unless noted otherwise below:

Construction trash (includes concrete, large quantities or rolls of carpet & foam padding), fencing, construction materials and debris), garage door openers, dirt, gravel, sand, rocks, hazardous, toxic or radioactive waste, large pieces of glass or mirrors (must be broken, placed in a cardboard box and weigh less than 40 pounds), paint, petroleum products/filters, acids, car batteries, car parts, tires, chemicals and human or animal fecal waste (if not contained in a plastic bag or closed boxes so that Royal employees do not come into direct contact with fecal materials while loading into the truck).

Contact Royal customer service at (713) 526-1536 with your questions or to arrange for extra-large and/or excluded items to be picked up separately at a negotiated price.



GRACIE GALVAN

Realtor

SRES, CHMS, & ALHS Specialist

RE/MAX

Professional Group

galvangracie@hotmail.com



Direct: 281-732-0009

Office: 832-478-1246

Area resident for 17 years.

SELLING YOUR HOME

- Free Market Analysis

BUYING A HOME

- Free Home Search Service

**LOOK NO FURTHER FOR GREAT
CUSTOMER SERVICE AND PUT
EXPERIENCE TO WORK FOR YOU!**

Member of HAR/MLS service

Always working for you!



Set sail in your own boat!



as low as **5.75% APR***

**Affordable financing for the
summer toys you want.**

NEW BOATS		MONTHLY PAYMENT PER \$1000 BORROWED
up to 144 months	as low as 5.75% APR	\$9.63
USED BOATS		
up to 96 months	as low as 6.35% APR	\$13.31
NEW MOTORHOMES & TRAVEL TRAILERS		
up to 120 months	as low as 4.75% APR	\$10.48
USED MOTORHOMES & TRAVEL TRAILERS		
up to 84 months	as low as 5.34% APR	\$14.29
NEW MOTORCYCLES, ATVs, & JET-SKIS		
up to 84 months	as low as 5.85% APR	\$14.54
USED MOTORCYCLES, ATVs, & JET-SKIS		
up to 72 months	as low as 6.20% APR	\$16.67



**Apply now or online
at www.eccu.net.**

*APR=Annual Percentage Rate. Rates are based on creditworthiness and are subject to change at any time. Normal credit criteria apply. Rates listed are effective and current as of 7/1/2014, and reflect all available discounts. Loan rates and terms vary depending upon loan type, loan amount, and creditworthiness. Certain loan terms and rates depend on model year and loan amount. Membership is required before loan can be funded. Effective 7/1/2013 rates will be discounted by 10% on these loans for each violation that is met from the following: 1) 17% (loan to value) is less than 90% at the time of the loan; 2) GAP is elected; 3) If credit life and/or disability OR E-service is elected; Member may only select either credit life and/or disability or E-service enrollment for purposes of the loan discount, may not select both to receive an additional discount; 4) If you apply online. The maximum discount is 40% if all of the above violations are met. Discounts are only given at time of loan closing. Subject to be discontinued on new loans at any time.



Not Available Online

At no time will any source be allowed to use the WillowTalk contents, or loan said contents, to others in anyway, shape or form, nor in any media, website, print, film, e-mail, electrostatic copy, fax, or etc. for the purpose of solicitation, commercial use, or any use for profit, political campaigns, or other self amplification, under penalty of law without written or expressed permission from the Willowbridge-Stonebridge Homeowners Association and Peel, Inc. The information in the WillowTalk is exclusively for the private use of Willowbridge-Stonebridge residents only.

DISCLAIMER: Articles and ads in this newsletter express the opinions of their authors and do not necessarily reflect the opinions of Peel, Inc. or its employees. Peel, Inc. is not responsible for the accuracy of any facts stated in articles submitted by others. The publisher also assumes no responsibility for the advertising content with this publication. All warranties and representations made in the advertising content are solely that of the advertiser and any such claims regarding its content should be taken up with the advertiser.




* The publisher assumes no liability with regard to its advertisers for misprints or failure to place advertising in this publication except for the actual cost of such advertising.

* Although every effort is taken to avoid mistakes and/or misprints, the publisher assumes no responsibility for any errors of information or typographical mistakes, except as limited to the cost of advertising as stated above or in the case of misinformation, a printed retraction/correction.

* Under no circumstances shall the publisher be held liable for incidental or consequential damages, inconvenience, loss of business or services, or any other liabilities from failure to publish, or from failure to publish in a timely manner, except as limited to liabilities stated above.

WE'VE GOT MORE SPOTS THAN EVER!

**SELL US YOUR CAR CENTERS
NOW LOCATED IN:**

 **League City**
 **Cypress (290 @ HWY6)**
 **The Woodlands**



SELL US YOUR CAR!



TEXASDIRECTAUTO.COM



PEEL, INC.

308 Meadowlark St. South
Lakeway, TX 78734

PRSR STD
U.S. POSTAGE
PAID
PEEL, INC.

WB

The David Flory Team



A+ Customer Service.
A+ Results!

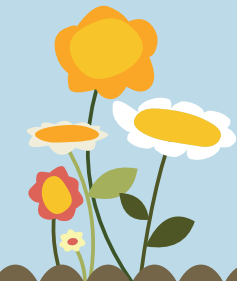
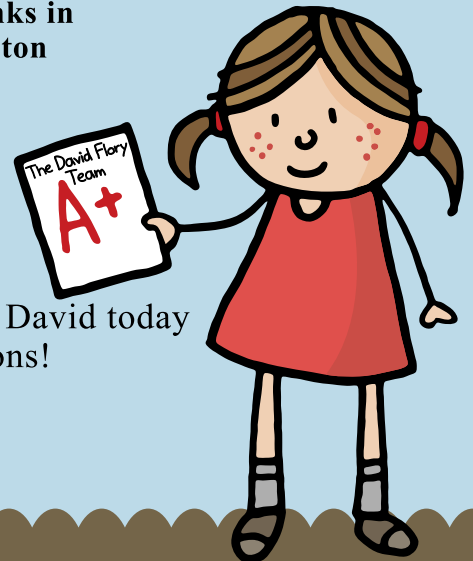
With over 30 years of experience, you can place
your trust in us to meet your real estate goals.

**The David Flory Team currently ranks in
the top 3 real estate teams in Houston**
Houston Business Journal, 2013

Thinking about buying or selling? Contact David today
to discuss current market conditions!

281.477.0345

info@floryteam.com



www.facebook.com/TheDavidFloryTeam

RE/MAX Professional Group 832.478.1205
Each office is independently owned & operated