

JULY *Yards* OF THE Month

8735 BEXAR



Jo Ann and Gary Matthews moved to Willowbridge in October, 2009. Jo Ann is in sales and marketing at Corbett Personnel Services, an established staffing firm in Houston. She also sells real estate part-time. Gary is the marketing and business development manager for Tifco Industries. They have a grown son and daughter, no grandchildren; however, they do have granddogs. They enjoy walking and biking on our trails, camping and golf.

The Matthew's were nominated by a neighbor that noted they both spend a lot of time on their lawn, shrubs and flowers, especially Gary. They are on a large corner lot which takes a lot of time out of their busy schedules.

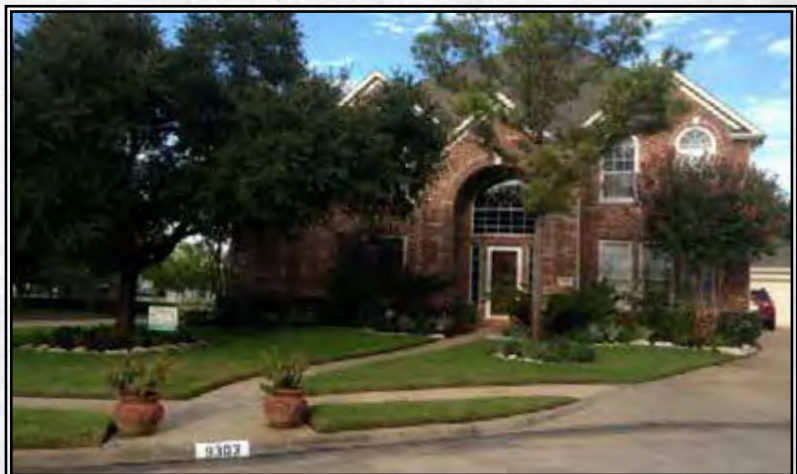
9303 STONE POST CIRCLE

Ijeoma and husband, Obichi Ikechi, along with their now two year old son moved to Stonebridge in November 2013 from southwest Houston to be closer to work.

Ijeoma, from here, is in IT at Weatherford. Obichi is an engineer at Halliburton.

They have two rescue fur babies, a Daschund/Chihuahua Mix and a Maltese Mix.

Obichi, originally from Nigeria, enjoys soccer and does most of his own lawn maintenance.



Willowbridge - Stonebridge

IMPORTANT NUMBERS

All Emergencies.....911
Harris County Sheriff..... 713-221-6000
Harris County Animal Control 281-999-3191
Cy-Fair Hospital..... 281-890-4285
Street Lights & Outages - CenterPoint Energy 713-207-2222
CenterPoint Energy..... 713-659-2111
Newsletter Publisher
Peel, Inc. www.PEELinc.com, 888-687-6444
Advertising.....advertising@PEELinc.com, 888-687-6444
Poison Control Center 800-222-1222
AT&T - Repair 800-246-8464
Billing 800-585-7928
Trash – Royal Disposal & Recycle 713-526-1536
Vacation Watch - Harris County District 5 281-290-2100
W. Harris County MUD #11 281-807-9500
Willow Place Post Office 281-890-2392
Willowbridge Website www.willowbridgehoa.com
Cable/Internet/Phone...COMCAST 713-341-1000

ASSOCIATION DIRECTORY

Beautification Committee
Jennifer Y'Barbo jhybarbo@subhou.com
Homeowners Association 281-497-4320
Graham Mgmt - Tracy Graham
..... grahammanagement@sbcglobal.net
Clubhouse/Reservations
Tammy Puerta 281-497-4320
Pool Parties/Tags
Sweetwater Pool Co. 281-988-8480
Marquee Coordinator
Barbara Lallinger..... 281-890-8464
Newsletter Coordinator
Barbara Lallinger & Rebecca Peters
..... willowbridgenews@gmail.com
Security Coordinator
Julie Dubros..... 281-794-9032
..... martin@juliedubros.com
Website Coordinator
Angela Doray..... willowbridgehoa@live.com
Yard of the Month Committee
Nominate your favorite at: willowbridgehoa.com or Contact
Jennifer Y'Barbo jhybarbo@subhou.com
Soccer Field Reservations
Terese Joubran tmjoubran@gmail.com
Lost Pet Coordinator
Sonia Moore msrco@aol.com, 281-955-8068
Welcoming Committee
Gracie Galvan 281-732-0009
..... galvangracie@hotmail.com

BOARD OF DIRECTORS

Jennifer Y'Barbo President
Julie Dubros Vice President
George Schaudel Secretary
Rebecca Peters Treasurer
Brian Fisher Director

HOA INFORMATION

Willowbridge Homeowners Association Inc. - Graham Mgmt
Tracy Graham 281-497-4320
E-Mail grahammanagement@sbcglobal.net
Fax 281-870-1654
If you have any questions or comments regarding the
neighborhood please contact the numbers above.

HOA MEETINGS

Willowbridge/Stonebridge Homeowner's Association
Meetings are held the fourth Thursday of each month at
the community clubhouse at 7:00 pm.

WELCOMING COMMITTEE

The Welcoming Committee meetings are the last Monday
of each month.

HARRIS COUNTY ROAD AND BRIDGE

To report street or curb damage, missing/damaged street
signs and street flooding: (281) 353-8424 or www.hcp4.net.
If a resident wants to request a new sign or replace a
damaged one, they have to go online and fill out a request.

BUSINESS CLASSIFIEDS

PIANO LESSONS: Developing a love of learning in aspiring
musicians through presenting fun and inspiring music. Kristin
Peters. 713-502-4248. Kristinpeterspianostudio@yahoo.com.
www.kppianostudio.com. Winchester Country. Call now to
schedule your trial lesson. If you change your mind its free!

Business classifieds (offering a service or product line for profit)
are \$50, limit 40 words, please contact Peel, Inc. Sales Office @
888-687-6444 or advertising@PEELinc.com.

BIG WELCOME TO OUR NEW NEIGHBORS!

Willowbridge
Brady

Wheatland
Lugo

Provided by the
Welcome Committee

CHAPTER 5 - Elm Trees

(Originally published in December 1999 by Glen Telge)

The small trees planted on either side of Willowbridge Park Blvd. from West Road to our clubhouse are a variety of Chinese Elm - *Ulmus parvifolia*, also called Lace Bark Elm. Two other Chinese Elm varieties commonly planted in Houston are the Drake Elm and the Prince Richard Elm. Elm trees are characterized by their small oval leaves and patchy multicolored bark which peels off in flakes. During early fall, if you inspect the tree closely, you will notice all along the branches tiny yellowish-green flowers, each with a seed in the middle, surrounded by little reddish-brown fruits that hang in masses. As you drive down West Road towards Jones Road you will see more Lace



Bark Elms planted out in the center median. They are really beautiful trees.

The American Elm - *Ulmus americana* and Cedar Elm - *Ulmus crassifolia*, are two native species that are well suited to be planted in the Houston area.

The American Elm is the largest of the Elm species and has toothed leaves that are 3-6 inches long and rough to the touch. The Cedar Elm is a small tree with a dome of arching branches and rather pendulous outer shoots. Its leaves are hard and rigidly stalked. The largest American Elm on record in Houston is located in the Houston Heights and is 69 feet high, 14 feet in circumference and has spread of 80 feet.



Mark Prehoda
RE/MAX Professional Group
Direct **281.855.4900**
Cell **281.851.7405**



Jean Gonzalez
Prehoda Team
Realtor
Cell **832.334.1477**

THE MARKET IS HOT! HOME VALUES ARE UP!

NEIGHBORHOOD INVENTORY IS VERY LOW.

If you are thinking of
selling, give us a call for a free
market analysis of your home.

Over 20 years
experience in the
local market!



Willowbridge - Stonebridge

HARRIS COUNTY SHERIFF'S OFFICE

5% REDUCTION IN HOMEOWNER'S INSURANCE PREMIUMS CHAPTER 5, TEXAS INSURANCE CODE, AMENDED ARTICLE 5.33A

With a home security inspection homeowners can receive a discount in their homeowner's insurance premium. Per the Texas Department of Insurance, the home must meet the following requirements to pass the inspection. The requirements are concentrated on the windows, doors and locks.

1. Exterior doors are solid core doors that are 1-3/8" thick and are secured by deadbolt locks. Deadbolts must lock with a minimum bolt throw of 1" to penetrate a metal strike plate. If the doors, secured by a deadbolt lock have breakable glass within 40" of the lock, the lock must be keyed from both sides unless prohibited by life safety codes.

2. Metal doors are secured by deadbolt locks as described above.

3. Double doors must meet the specifications for exterior doors listed above have the inactive door secured by header and threshold bolts that penetrate metal strike plates. In case of breakable glass within 40" of header or threshold bolts, the bolts should be flush-mounted in the edge of the door.

4. Sliding glass doors are secured by secondary locking devices to prevent lifting and prying.

5. Dutch doors have concealed flush-bolt locking devices to

interlock upper and lower halves, and are secured by a deadbolt as described above.

6. Garage doors are equipped with key operated locking devices.

7. Windows are secured by auxiliary locking devices. An auxiliary locking device required by this section includes screws, wooden dowels, pinning devices, and/or key operated locks. In areas in which life safety codes permit, metal bars and gratings, if mounted to prevent easy removal, may be substituted for auxiliary locking devices. Jalousies or gratings mounted as provided above.

NOTE: Electronic alarm systems are not included in these requirements and have no bearing on the inspection. The Texas Crime Prevention Association has strongly recommended that no licensed inspector conduct alarm inspections until the Texas Legislature revises the present bill.

When your home meets these requirements please complete the form below and mail it to us to schedule your inspection appointment. If your home passes the inspection, the results will be forwarded to the Texas Department of Insurance who will then mail you a certificate.

Detach and mail to the address below

Homeowner's Name _____

Address _____

Subdivision Name _____

Home Phone _____ Work Phone _____

HCSO CRIME PREVENTION UNIT
9111 EASTEX FREEWAY, SUITE 300 HOUSTON, TX 77093
(713) 759-9454



CHICUNGUNYA!

This sounds like a call in the wild, but it's not. Pronounced pretty much like it is spelled, (chik-in-GUHN'-yuh) is a tropical virus (CHIKV) spread by what else....mosquitoes and is similar to the dengue virus. A UTMB team has previously found that a lineage strain of the CHIK V virus has adapted itself to be hosted by not only the Aedes aegypti mosquito that lives mainly in the tropic but also the Asian tiger mosquito, A. albopictus, which can be currently found on all continents except Antarctica. Harris County reported its' first mosquito to test positive for the virus on August 7th, caught in a surveillance trap in Northwest Harris County. They can't figure out how the insect became infected with a virus so new to Texas and the U.S. To get it, the mosquito would have had to bite someone recently sickened with the disease. Nearly 500 U. S. travelers have brought the virus (also known as Chik V) home from Caribbean and Central American countries, where it is reported to be spreading widely this year. Great effort is being made to keep it from getting a foothold in the U.S. Symptoms include rash, pain in the lower back, joint

pain (with or without presence of swelling), vomiting, nausea, headaches, chills and fevers. The disease, which causes severe joint pain and fever in 80% of infected people, has no known treatment or vaccine. It is treated symptomatically, usually with bed rest, fluids and medicines to relieve symptoms of fever and aching such as ibuprofen, naproxen, acetaminophen or paracetamol. Aspirin should be avoided. Infected persons should be protected from further mosquito exposure during the first few days of the illness so they can not contribute to the transmission cycle. Chic V is considered to be cured by the immune system in almost all cases. Do not ignore these symptoms, especially if you have recently traveled to the countries listed above as this disease can have an acute phase and a chronic phase (that can last for years).

West Nile Virus (WNV), with nine reported cases (as of 8/8), has made a strong return to Harris County. The county performed its' first aerial pesticide spraying on the night of August 7th; however, this spraying was aimed primarily at the WNV.

ROMOCO properties

Exceeding Your Expectations

COMMUNITY & AREA SPECIALISTS

Call us today for all your real estate needs.



- Buy - Invest - Sell
- Residential - Land
- New Construction - Build on Your Lot or the Community of your choice

SCORE THE WINNING TOUCHDOWN WITH ROMOCO PROPERTIES!



1 YEAR FREE HOME WARRANTY

VALUE UP TO \$535

Mention this ad and receive 1 year residential service contract with provider of your choice upon closing.



ROCHELLE O. BARROW,
ABR, ALHS, CHMS, SRES, SFR
Realtor® Partner
832.620.6644
rochelle@romocoproperties.com



LINDA MOGA
Broker Partner
281.793.6285
mogaco@aol.com



MEG TAYLOR
Realtor®
713.471.8823
megltaylor@yahoo.com



GERRI LARSEN
Realtor®
713.553.3091
gerri@romocoproperties.com



TRISH JOSEPHS
Realtor®
281.250.4750
trish@trishjosephs.com



TRACY YOUNG
Realtor®
832.771.0840
tyoung@tracyyoungtx.com

Willowbridge - Stonebridge

The School Zone

By: Barbara Lallinger

BUSES ROLL AGAIN

On the very, very off chance that this newsletter arrives before 8/25 (1st day of the school year), please note that WBSB will again have bus service within our subdivision. If WillowTalk doesn't make it until after the 25th, you've probably already heard them rumbling through the neighborhood, a by-product of passage of \$2.1B bonds in May. The service is being restored to areas covered pre-2009 when it was discontinued due to budget cuts, a by-product of inequitable funding from the state. Many parents have said that they are extremely happy to have the service back so their schedules could go back to something close to normalcy. This should be extremely beneficial to parents with students at both Gleason ES and Cook MS, not to mention those that might also have one at JVHS in the mix! Do you think the car rider lines will get shorter and not meander through the neighborhood? Doubtful, don't forget we also have new school boundaries this year that will encompass new areas on the other side of Beltway 8.

When in the car rider lane, please pull as close to the curb as possible so that traffic may still pass you.

GLEASON ES SCHEDULE

September 12 (Friday) - Fall Fund Raiser Kick-off
September 15 (Monday) - Back to School Night
September 15 (Monday) - PTO General Meeting
September 23-25 (Tu, W, Th) - Hearing & Vision Screening
September 30 (Tuesday) - Fall Pictures

COOK MS

October 14-15 (Tu, W) - Hearing & Vision Screening

JVH

*(Project Prom Fundraisers)**

September 12 (Friday) - Wine & Painting (byow)
September 17 (Wednesday) - Volunteers sell water & snacks during set-up and preparation for the Homecoming Parade in parking lot

**Contact Janet Munchrath @ janetmunchrath@hotmail.com for more details.*

The Bodnar Team



Anna, Judy, Amanda

CyFair Area Specialists

Need to buy, sell or lease?

We advertise Willowbridge and Stonebridge

We will get results now!



- ◆ Over 1,000 homes sold
- ◆ 28 years experience
- ◆ Lo atendemos tambien en Español

Contact us for SOLD data in your neighborhood!

832-837-9940

www.BodnarTeam.com

BodnarTeam@outlook.com

Better Homes
and Gardens
REAL ESTATE

**GARY
GREENE**

11734 Barker Cypress Rd. #116
Houston, TX 77433
832-334-0001



TALKING TRASH

By: Barbara Lallinger

RECYCLING - "LET THE CARTON LIVE ON!"

The City of Houston started a new recycling campaign in May, "Recycle Your Cartons".

Of course we're not in the city, but in the past, we've been told not to recycle things that are plastic coated such as milk cartons. Some of us still did it and some did not. In checking with Royal Waste, it was determined that we can now recycle two types of food and beverage cartons (if they have an acceptable recycle code on them - no #6's). Below is a list of the two types of cartons and products included in each (please note that ice cream containers are not listed & this applies to most of them, however, some such as Kroger's Private Selection brand and others are, with the proper recycling code). Recycled products are given a second life and become paper towels, napkins, tissue and even building materials. PLEASE clean the cartons first, reducing bugs and smells in your recycle bin and possible injuries to waste collectors such as insect stings.

Shelf Stable Cartons - (found on the shelves of stores)

Milk, Juice, Soymilk, Soup/Broth, Wine

Refrigerated Cartons - (found in the chilled sections)

Milk, Juice, Soymilk, Cream, Egg Substitutes

RECYCLING HAZARDOUS WASTE MATERIALS (HHW)

Thanks to Len Clausen of Jersey Village for his posting found on Nextdoor Willowbridge regarding this HHW site. I have seen the sign on the 290 feeder many times and had planned on checking out what type of waste could be disposed of, but never found the time. In the past many articles have also cautioned against putting hazardous waste into the regular trash (in fact it is illegal); however, some people still do it by hiding it in boxes and other containers. When HHW is disposed of in our trash cans, it can contaminate landfills, and subsequently, our groundwater (we already have low/acceptable levels of arsenic in ours!). When dumped onto the ground or poured into the storm sewer, HHW can contaminate surface water. In either case, water contamination results in higher water treatment costs and has a detrimental effect

(Continued on Page 8)



Lightning Fast cash to start your project today.

- Rates as low as **6.24% APR***
- No early pre-payment penalty
- \$0 closing costs
- Borrow \$5,000 - \$20,000
- Terms up to 60 months

Apply today. Get your money today.

ENERGY CAPITAL CREDIT UNION
BETTER BANKING STARTS HERE

*APR is Annual Percentage Rate and is current as of 8/1/2014. Must be a homeowner to qualify. Rate will vary depending on your personal credit worthiness. Rate subject to change at any time. Visit www.eccu.net for more information.

BASHANS PAINTING & HOME REPAIR

- Interior & Exterior Painting
- HardiPlank Replacement
- Sheetrock Repair
- Cabinet Painting
- Pressure Washing
- Fence Repair/Replacement
- Custom Staining
- Gutter Repair & Replacement
- Crown Molding
- Wallpaper Removal
- Wood Replacement
- Interior Carpentry
- Wallpaper Removal & Texture
- Garage Floor Epoxy
- Roofing
- Faux Painting

NO MONEY UP FRONT

20 Years Experience • References Available

Commercial/Residential

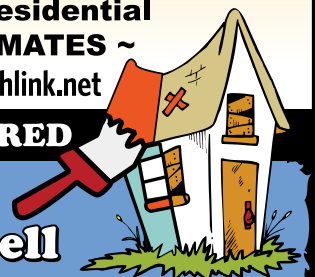
~ **FREE ESTIMATES** ~

BashansPainting@earthlink.net

FULLY INSURED

281-347-6702

281-731-3383 cell



HARDIPLANK®



Willowbridge - Stonebridge

(Continued from Page 7)

on the ecosystem. Many jobs around the home require the use of products containing hazardous components that are flammable, corrosive, toxic or reactive. Some of these products are identified by such words as "warning", "danger", "toxic", "corrosive", "irritant", "flammable" or "caution on their labels/packaging."

This HHW facility is a part of the Harris County Public Infrastructure Department Architecture and Engineering Division for use by residents of Harris County, but not residents that live inside the city limits of Houston (bring proof of residency in the form of a driver's license and utility bill). It is located at 6900 Hahl Rd. (77040) which is on the north side of the 290 feeder, between Gessner and the Jones Carpet One Floor & Home store. You can drop off your items without leaving your car. It is open on Wednesdays from 9 am - 3 pm, 2nd Saturday of the month from 9 am - 2 pm and the 4th Saturday of the month (go to website below and click on a calendar for day and month). Their phone number is (281) 560-6200 (recorded message, directions, items taken, etc.). Para informacion en espanol llame: (281) 560-6232. Visit their website for more information at www.eng.hctx.net, click on the gray HHW box at the top right hand side. This site also has

a sign up to be notified of pharmaceutical waste collection (for all those pills/medicines that go in the trash and down the commode).

Items Accepted - (but not limited to):

Household Cleaners, Batteries (small to car size), Yard Products (pesticides/insecticides, Tires (up to 4 or 5 per visit) fertilizers, etc.), CFL & Fluorescent (light bulbs), Auto Products (gas, motor oil, antifreeze, etc.), Items containing mercury, Pool Chemicals, Aerosols (except Freon & mace), Paint and paint related products, Fire Extinguishers, Small & BBQ sized propane cylinders

Items Not Accepted

(go to www.Earth911.com) for disposal sites:

Electronics (computers, TV's, etc.), Explosives (incl. ammunition and, Heavy or Household Trash, firecrackers), Medical, Biological or Radioactive Waste, Compressed Gas Cylinders (incl.

Traditional Recyclables (paper, cans, plastic, Freon, helium, oxygen cylinders, glass, etc.), Smoke Detectors
Household Appliances, Business Waste

kww MEMORIAL
KELLERWILLIAMS. REALTY

joebrothers@sbcglobal.net

Use Cell Phone to take
picture of QR Code and
get FREE App of all MLS
Listings of houses for sale



or just call and I will send
the App to your phone
713-899-2062



JOE BROTHERS
BROKER ASSOCIATE



EACH OFFICE IS INDEPENDENTLY OWNED & OPERATED



ENCOMPASS
LENDING GROUP



**Mention this ad
and receive**

\$250.00

**credit toward closing
costs. Expires 9/30/14**

One Philosophy Sets Me Apart From The Competition:

A Proactive Mortgage Professional EQUALS Satisfied Clients!

My clients are my top priority. I am available through every step of the mortgage process. Every Client receives a Borrow Smart Analysis to ensure SMART and INFORMED choices regarding their investment is made. Let me use my expertise to help you.

I will find the right loan program that fits your needs.

Company website <http://www.elgloans.com>

My website www.cypressmortgages.com

Email ccrawford@elgloans.com

Call for a loan now! Free Consultation! (832) 334-7659

BUGS & FUNGUS AMONG US!

What do chinch bugs, brown patch and take-all patch have in common? All three can wreak havoc on your lawn!



CHINCH BUGS

These tiny bug's damage normally becomes noticeable in August when it's hot and dry; however, various weather conditions (isn't it usually hot and dry all summer into the fall here in Houston?) can change the dateline for these critters.

An infestation causes patches of grass to turn brown, with a distinctive line between live and dead grass. Think you have them? Cut the ends out of a coffee can. Screw the can into the soil along a half-dead, half-live area. Fill with water. Look for floating tiny, black bugs with white wings folded against their bodies. Chinch bugs normally attack St. Augustine grass, but may also feed on Bermuda and Zoysia grass. To treat, use an insecticidal soap. In the future, mow St. Augustine grass as high as your mower will allow. Taller blades retain more moisture, require less watering, put down deeper roots and shades out weeds like Bermuda grass.

BROWN PATCH (FUNGUS)

The first sign of brown patch is circular patterns of dead grass blades. In two to three weeks, new leaves may emerge in the center of the circular patch, giving distressed areas a donut shaped appearance. The affected grass turns brown and grass blades rot and break off from the runners. Brown patch is also partial to St. Augustine grass. It can spread in an area of one to fifty feet. It occurs in late fall through early spring and is promoted by wet weather or frequent watering. To treat, use a fungicide on the affected area.

TAKE-ALL PATCH (FUNGUS)

The first sign of take-all patch is a yellowing of the grass and a darkening of the grass roots. The grass then thins in irregular shapes. The darkening of the roots indicates rotting. The roots can rot so extensively that the grass can be easily pulled up. Take-all patch fungus does exactly as its name implies. It rots the roots so badly that if not treated it can eventually kill the whole lawn. This fungus mainly spreads during the fall, winter and spring, when there is more moisture and cool or mild temperatures. By this time the damage is done as symptoms usually do not appear until the hot, stressful days of summer.

Some general rules to help avoid all three of these conditions are:

1. Raise the height of your lawnmower to reduce stress.
2. Avoid over watering/fertilizing.
3. Maintain good drainage.
4. Thin out tree branches to brighten super shady areas.
5. Aerate your lawn once a year.
6. At the first sign of disease, determine what it is and treat accordingly (in Houston it could be all three!).

Brilliant Energy Texas OUC #10140

BRILLIANT ENERGY

Easy Online Sign-Up at
BrilliantElectricity.com
USE "NEIGHBORHOOD NEWSLETTER" AS REFERRAL

BRILLIANT ENERGY = SERIOUSLY LOW RATES
BRILLIANT ENERGY'S ELECTRICITY RATES CHALLENGE
THE RATES OF EVERY OTHER PROVIDER IN TEXAS!
LOCK-IN A LOW ELECTRICITY RATE FOR
UP TO 3 YEARS

BRILLIANT ENERGY IS RECOMMENDED BY TEXAS ENERGY
ANALYST, ALAN LAMMEY THE HOST OF THE "ENERGY
WEEK" RADIO SHOW ON NEWSTALK 1070 KNTH!

Ask the "Energy Analyst"
281.658.0395

GREAT BUSINESS RATES TOO!



Willowbridge - Stonebridge

PARKING VIOLATIONS and TEXAS STATE LAWS

Many residents are not aware that seemingly simple things we do each day are against the law. State Law prohibits the following:

- Blocking Driveways
- Parking too close to intersections
- Parking too close to corners
- Blocking Fire Hydrants
- Parking in Fire Lanes

Blocking Driveways

When a vehicle is parked, blocking a driveway, it creates an inconvenience for the homeowners attempting to leave/enter their driveway.

Blocking Sidewalks

If a vehicle is parked blocking a sidewalk, it becomes difficult for pedestrians, bicycles, children, strollers and wheelchairs to pass safely. Blocking the sidewalk can result in forcing these people to enter the street causing unsafe conditions. This includes parking a motorcycle on the sidewalk.

Blocking a Fire Hydrant

This is one of the most common violations. When a vehicle is parked, blocking a fire hydrant or fire lane it creates problems for emergency vehicles and hinders their ability to do their job effectively. No vehicles may be parked within 15 feet of a fire hydrant.

Parking Next to Curbs and Oncoming Traffic

Vehicles can't be more than 18 inches away from the curb and must be parallel to curb and parked in the same direction as the traffic flow. This means that the vehicle must follow the curb and can't pull or back in straight on the curb. This is a serious problem on many cul-de-sacs.

48 Hour Parking

Vehicles can't be parked on any residential street for more than 48 consecutive hours.

Parking too Close to an Intersection/Crosswalk

Vehicles may not park within 30 feet of a stop sign or 20 feet of a crosswalk. Failing to obey these laws can result in the issuance of a traffic ticket!



**EASY AS
1-2-3**

TEXASDIRECTAUTO.COM
SELL US YOUR CAR!

Not Available Online

At no time will any source be allowed to use the WillowTalk contents, or loan said contents, to others in anyway, shape or form, nor in any media, website, print, film, e-mail, electrostatic copy, fax, or etc. for the purpose of solicitation, commercial use, or any use for profit, political campaigns, or other self amplification, under penalty of law without written or expressed permission from the Willowbridge-Stonebridge Homeowners Association and Peel, Inc. The information in the WillowTalk is exclusively for the private use of Willowbridge-Stonebridge residents only.

DISCLAIMER: Articles and ads in this newsletter express the opinions of their authors and do not necessarily reflect the opinions of Peel, Inc. or its employees. Peel, Inc. is not responsible for the accuracy of any facts stated in articles submitted by others. The publisher also assumes no responsibility for the advertising content with this publication. All warranties and representations made in the advertising content are solely that of the advertiser and any such claims regarding its content should be taken up with the advertiser.

* The publisher assumes no liability with regard to its advertisers for misprints or failure to place advertising in this publication except for the actual cost of such advertising.

* Although every effort is taken to avoid mistakes and/or misprints, the publisher assumes no responsibility for any errors of information or typographical mistakes, except as limited to the cost of advertising as stated above or in the case of misinformation, a printed retraction/correction.

* Under no circumstances shall the publisher be held liable for incidental or consequential damages, inconvenience, loss of business or services, or any other liabilities from failure to publish, or from failure to publish in a timely manner, except as limited to liabilities stated above.



**We solve all the
pieces to the puzzle.**



PEEL, INC.
printing & publishing

**Call Today to Get Started
On All Your Printing Needs.**

**1-888-687-6444
Ext. 23**

EXPERIENCE MATTERS doing business for 30+



GRACIE GALVAN

Realtor

SRES, CHMS, & ALHS Specialist

RE/MAX

Professional Group

galvangracie@hotmail.com

Direct: 281-732-0009

Office: 832-478-1246

Area resident for 17 years.

SELLING YOUR HOME

- Free Market Analysis

BUYING A HOME

- Free Home Search Service

**LOOK NO FURTHER FOR GREAT
CUSTOMER SERVICE AND PUT
EXPERIENCE TO WORK FOR YOU!**

Member of HAR/MLS service

Always working for you!





PEEL, INC.

308 Meadowlark St. South
Lakeway, TX 78734

PRSR STD
U.S. POSTAGE
PAID
PEEL, INC.

WB

The David Flory Team



A+ Customer Service.
A+ Results!

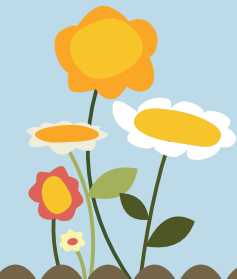
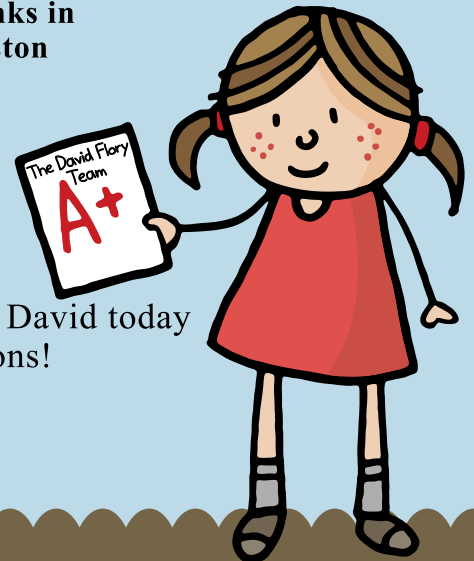
With over 30 years of experience, you can place
your trust in us to meet your real estate goals.

**The David Flory Team currently ranks in
the top 3 real estate teams in Houston**
Houston Business Journal, 2013

Thinking about buying or selling? Contact David today
to discuss current market conditions!

281.477.0345

info@floryteam.com



www.facebook.com/TheDavidFloryTeam

RE/MAX Professional Group 832.478.1205
Each office is independently owned & operated