



3rd Annual Rocky Creek Fall Fest Sunday, October 26th, 4-6pm

This year's Fall Fest is bigger and better than ever!

Fry's Fun Farm!
Baby animal petting zoo & PONY RIDES!
Live Music by The Coordinates

Enjoy kettle corn, hamburgers, hot dogs & other yummys!
with Dunk Tank, Cake Walk & Pumpkin Toss

We will also have a photographer on hand taking photos
using the fall photo backdrop.

HALLOWEEN DECORATING CONTEST

The Rocky Creek HOA is proud to sponsor the First Annual Rocky Creek Halloween Decorating Contest. Show your Halloween spirit and decorate your home. Who has the spookiest home in Rocky Creek? If you would like to have your home judged, please submit your name, address and phone number to ofelia@southwestmanagement.net by October 24th, 2014. Judging will start Sunday, October 26th, weather permitting. The lucky winner will receive a prize valued at \$100.



IMPORTANT NUMBERS

EMERGENCY NUMBERS

| | |
|--|--------------|
| EMERGENCY | 911 |
| Fire..... | 911 |
| Ambulance | 911 |
| Police Department | 512-314-7590 |
| Sheriff – Non-Emergency | 512-974-0845 |
| Travis County ESD No.6/Lake Travis Fire Rescue | |
| Administration Office | 512-266-2533 |
| Travis County Animal Control..... | 512-972-6060 |

SCHOOLS

| | |
|---------------------------------|--------------|
| Lake Travis ISD | 512-533-6000 |
| Lake Travis High School..... | 512-533-6100 |
| Lake Travis Middle School | 512-533-6200 |
| Bee Cave Elementary..... | 512-533-6250 |

UTILITIES

| | |
|-------------------------------------|----------------|
| West Travis County PUA (Water)..... | 512-246-0498 |
| Pedernales Electric..... | 512-219-2602 |
| Alliant Gas (Propane) | 866-764-0283 |
| AT&T | |
| New Service | 1-800-464-7928 |
| Repair | 1-800-246-8464 |
| Billing | 1-800-858-7928 |
| IESI (Garbage & Recycling)..... | 512-282-3508 |
| Travis County Hazardous Waste..... | 512-974-4343 |

OTHER NUMBERS

| | |
|--------------------------------|----------------------|
| Bee Cave City Hall..... | 512-767-6600 |
| Bee Cave Library | 512-767-6620 |
| Municipal Court | 512-767-6630 |
| Lake Travis Postal Office..... | 512-263-2458 |
| City of Bee Cave | www.beecavetexas.com |

NEWSLETTER PUBLISHER

| | |
|------------------|-------------------------|
| Peel, Inc. | 512-263-9181 |
| Editor..... | rockycreek@peelinc.com |
| Advertising..... | advertising@peelinc.com |

HOA MANAGEMENT

| | |
|-------------------------------------|---------------------------------|
| Southwest Management Services | 512-266-6771 |
| Christy Gross | christy@southwestmanagement.net |

ARTICLE INFO

The Rocky Creek Connection is mailed monthly to all Rocky Creek residents. Residents, community groups, churches, etc. are welcome to submit information about their organizations in the newsletter. Personal news for the Stork Report, Teenage Job Seekers, recipes, special celebrations, and birthday announcements are also welcome.

If you have an article of interest to the community please submit to rockycreek@peelinc.com by the 15th of the month. The newsletter can also be viewed online at www.PEELinc.com.

Have a Safe Halloween!



Halloween, October 31st, falls on a Friday night this year, so we urge you to take some safety precautions before sending your kids out to trick-or-treat!

- Rocky Creek is DARK at night with limited street lighting, so be sure your kids have some sort of reflective material on their clothing. Glow lights are a great option!
- Children shouldn't snack while they're out trick-or-treating. Urge your children to wait until they get home and you have had a chance to inspect the contents of their "goody bags."
- Tell children not to accept – and especially not to eat – anything that isn't commercially wrapped.
- Parents of very young children should remove any choking hazards such as gum, peanuts, hard candies or small toys.
- Inspect commercially wrapped treats for signs of tampering, such as an unusual appearance or discoloration, tiny pinholes, or tears in wrappers. Throw away anything that looks suspicious.

Hope you have a safe and fun Halloween!

CPR, First Aid & AED Training

October 19th

The Rocky Creek HOA is hosting a certification course at the amenity center on Sunday, October 19th, 6-7:30pm, instructed by Rocky Creek neighbor, Beth Purkey. \$25/ per person.

With the recent sad news regarding the child struck by lightning at the nearby youth league fields, several neighbors have expressed the need for this training. The Rocky Creek HOA will be installing an AED (Automatic External Defibrillator) at the amenity center prior to the next swim season. If you have never had CPR and AED training before or you need a refresher, don't miss this great opportunity as we bring the class to you.

Please register by emailing Beth Purkey, bethpurkey@gmail.com to register. The class is limited to 40 participants, ages 10 & up welcome. We will add another class and continue to offer this training on at least an annual basis.



Rocky Creek Annual Holiday

Yard Decorating Contest

Friday, December 12th

Start planning your holiday decorations!

One winner, awarded a special prize. The winner will also get to display their winning yard sign during the holiday season! Make sure your lights are on the evening of Friday, December 12th as our judges will be driving the community to choose a winner!

WTCPU Introduces New Operations Service Provider

Rocky Creek's water and waste water provider, the West Travis County Public Utility Agency (WTCPUA), announced in a notice included in the last billing statements that they have contracted with a new customer and operations service provider, U.S. Water.

The WTCPUA transitioned between Severn Trent Services to USW during September with their process complete as of October 1st. Please be sure to read future letters from the PUA that will address, in greater detail, important transitional steps. Your last bill from Severn Trent was received in September. After October 1st, utility payments will be remitted to:

West Travis County Public Utility Agency

11805 Bee Caves Road, Ste. 200, Bee Caves, Texas 78738

To report water leaks or another service request or if you have a question about your bill, please call 512-263-0125. For any questions you may have about the transition, please contact the PUA at 512-263-0100 or email generalmanager@wtcpua.org.

Mark Your Calendars Now! 2014 Rocky Creek Events

ROCKY CREEK GETS FIT!

Mondays: Yoga at 7:45am (\$5/class), Strength Training at 8:45 (\$10/session)

Wednesdays: Boot camp at 6am & 7:30am (\$10/session)

Fridays: Boot camp at 6am & 7:30am (\$10/session), Strength Training at 8:45am (\$10/session)

All sessions are held at the Rocky Creek Amenity Center.

Please pay your instructor directly.

SEPTEMBER 27

COMMUNITY WIDE GARAGE SALE DAY

Have your own or make it a block event! The HOA will place a banner at the entry the week of the sale. You are encouraged to place directional signs within the community and post your garage sale on local media sites. Please remember to store all unsold items and remove all signage by the end of the day.

OCTOBER 19

CPR, FIRST AID & AED CERTIFICATION

6-7:30pm at the Rocky Creek Pool, by Beth Purkey

\$25 per person for ages 10+, Class limit: 40 people

Please sign up by emailing bethpurkey@gmail.com, Beth will arrange your payment drop off prior to the class.

OCTOBER 26

3RD ANNUAL ROCKY CREEK FALL FEST

**NEW DATE* | 4-6pm at the Rocky Creek Amenity Center*

Live music, BBQ, games, petting zoo and pony rides!

DECEMBER (TBD)

COOKIES WITH SANTA

Hosted by Highland Homes at the model home on Rush Pea Circle.

DECEMBER 12

HOLIDAY DECORATING CONTEST JUDGING

Start planning your decorations now! One winner, one prize valued at \$100!

All Events are tentative and subject to change or cancel, so please check monthly issues of the Rocky Creek Connection, and watch for bulletins from your HOA management team.



ROCKY CREEK KIDS



Rocky Creek goes back to school!



Carter and Merrick spent their Labor Day selling lemonade on the corner of Wildrye and Rocky Creek Blvd help raise money for Alex Hermann.



Rocky Creek Atomic Scorpions! U5 Soccer Team made up of all Rocky Creek boys! From left to right ... Kyle, Cash, Alex, Hutchins, Carson and Tom (Coach Michael Reilly in the background). Teammate Nolan is not pictured.



Beckett Noel (age 2) and Presley Noel (age 5) competing in the Brain Power 5K on September 7th!



This is Cash Harris, 4, (left) and Cruise Harris, 2, (right) hitting golf balls!



Cash and Cruise Harris along with Ethan, Everett and Jack Kendall.



The 'Take Care of Texas' Quick Guide to Recycling

Recycling allows individuals to give new life to the products they use. When manufacturers use recycled materials in their products, not only does it conserve natural resources and reduce waste in landfills, it also reduces greenhouse gas emissions through energy savings.

Our national recycling rate is only 34.5 percent annually but is responsible for sending 87 million tons of material to a useful second life instead of the landfill. These recycling efforts save Americans the equivalent of the annual energy consumption of nearly 10 million U.S. households per year and avoids greenhouse gas (GHG) emissions equivalent to removing more than 33 million cars from the road each year.

Please help us increase our annual recycling rate! Visit KeepCyfairBeautiful.org to access the 'Take Care of Texas' free publication 'What Do I Do With It Now?' and learn more about where to recycle more than just paper, cardboard, bottles and cans!

SHOW OFF YOUR SUPERHERO



Parents this is your chance to brag on your kiddos. We want pictures of your kids doing everyday things, school events, plays, sports, etc. Send in your pictures to be featured in the Rocky Creek Connection. E-mail your pictures to rockycreek@peelinc.com by the 15th of the month.



CROSSFIT HIVE

SEE our class
schedule on our
Facebook page

CELEbrating our
one year
anniversary

WOMEN'S
ONLY CLASS

MON/WED/FRI @ 9:30AM

FREE
COMMUNITY WORKOUT

EVERY SATURDAY @ 9AM

512.296.0141 • 5004 BEE CREEK ROAD • BEE CAVE, TEXAS 78699

 [FACEBOOK.COM/CROSSFITHIVE](https://www.facebook.com/crossfithive)

Rocky Creek Connection

Pruning Guidelines for Prevention of Oak Wilt in Texas

NOW IS THE TIME TO PRUNE YOUR OAKS TREES

Oak wilt, caused by the fungus *Ceratocystis fagacearum*, is the most destructive disease affecting live oaks and red oaks in Central Texas. Most of the tree mortality results from tree-to-tree spread of the pathogen through interconnected or grafted root systems, once an oak wilt center becomes established. New infection centers begin when beetles carry oak wilt fungal spores from infected red oaks to fresh, open wounds on healthy oaks. Wounds include any damage caused by wind, hail, vehicles, construction, squirrels, birds or pruning. Research has shown that both oak wilt fungal mats on infected red oaks and insects that carry oak wilt spores are most prevalent in the spring. Below is a brief description of how you can reduce the risk of fungal spread when pruning.

- Always paint fresh wounds on oaks, including pruning cuts and stumps, with wound dressing or latex paint immediately after pruning or live tree removal at all times of the year.
- Clean all pruning tools with 10% bleach solution or Lysol™ between sites and/or trees.
- If possible avoid pruning or wounding of oaks during the spring (currently defined as February 1 through June 30). Reasons to prune in the spring include:

- To accommodate public safety concerns such as hazardous limbs, traffic visibility or emergency utility line clearance.
- To repair damaged limbs (from storms or other anomalies)
- To remove limbs rubbing on a building or rubbing on other branches, and to raise low limbs over a street.
- On sites where construction schedules take precedence, pruning any live tissue should only be done to accommodate required clearance.
- Dead branch removal where live tissue is not exposed.

Pruning for other reasons (general tree health, non-safety related clearance or thinning, etc.) should be conducted before February 1 or after June 30. Debris from diseased red oaks should be immediately chipped, burned or buried. Regardless of the reasons or time of year, proper pruning techniques should be used. These techniques include making proper pruning cuts and avoiding injurious practices such as topping or excessive crown thinning. If you are uncertain about any of this information, you should consult with a Texas Oak Wilt Certified arborist, ISA Certified Arborist, or an oak wilt specialist from a city, county or state government agency such as the Texas Forest Service or Texas AgriLife Extension Service.

References available at <http://www.TexasOakWilt.org>.

DROWNING IS FAST & SILENT KEEP KIDS IN ARM'S REACH



WATER SAFETY TIPS AT
WWW.COLINSHOPE.ORG



Volunteer - Donate
COLINSHOPE.ORG

60 Texas children have lost their lives to a fatal drowning this year.*

Take our Water Safety Quiz. www.colinshope.org/quiz/

Year round: Athlete and Community Ambassadors needed. Email us: info@colinshope.org

November: Underwater Holiday Photos! Back by popular demand, and coming soon.

Colin's Hope will again offer awesome and unique underwater holiday photos to capture your BEST Holiday picture Ever! Proceeds from photos will help us prevent drowning. Locations and dates will be posted at www.colinshope.org and our Facebook page soon.

Thank you to our sponsors, donors, and volunteers for their year round support!

A special thank you to Peel, Inc. From donated ads to pledges raised in our golf tournament, their support helps us to raise water safety awareness to prevent children from drowning.

*Source: Texas DFPS, Watch Kids Around Water



LAYERS OF PROTECTION CAN PREVENT DROWNING



CONSTANT
VISUAL
SUPERVISION



LEARN
TO
SWIM



WEAR
LIFE
JACKETS



MULTIPLE
BARRIERS
TO WATER



KEEP BACKYARDS
& BATHROOMS
SAFER



CHECK POOL
& HOT TUB
FIRST



STAY AWAY
FROM
DRAINS



BE SAFER
AT THE
BEACH



LEARN CPR
& REFRESH
SKILLS YEARLY

BUGS & FUNGUS AMONG US!

What do chinch bugs, brown patch and take-all patch have in common? All three can wreak havoc on your lawn!

Chinch Bugs: These tiny bug's damage normally becomes noticeable in August when it's hot and dry; however, various weather conditions (isn't it usually hot and dry all summer into the fall here in Houston?) can change the dateline for these critters. An infestation causes patches of grass to turn brown, with a distinctive line between live and dead grass. Think you have them? Cut the ends out of a coffee can. Screw the can into the soil along a half-dead, half-live area. Fill with water. Look for floating tiny, black bugs with white wings folded against their bodies. Chinch bugs normally attack St. Augustine grass, but may also feed on Bermuda and Zoysia grass. To treat, use an insecticidal soap. In the future, mow at a higher length. Taller blades retain more moisture, require less watering, put down deeper roots and shades out weeds.

Brown Patch (fungus): The first sign of brown patch is circular patterns of dead grass blades. In two to three weeks, new leaves may emerge in the center of the circular patch, giving distressed areas a donut shaped appearance. The affected grass turns brown and grass blades rot and break off from the runners. Brown patch is also partial to St. Augustine grass. It can spread in an area of one to fifty feet. It

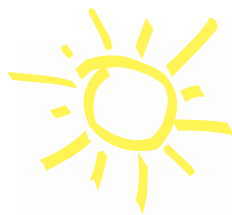
occurs in late fall through early spring and is promoted by wet weather or frequent watering. To treat, use a fungicide on the affected area.

Take-All Patch (fungus): The first sign of take-all patch is a yellowing of the grass and a darkening of the grass roots. The grass then thins in irregular shapes. The darkening of the roots indicates rotting. The roots can rot so extensively that the grass can be easily pulled up. Take-all patch fungus does exactly as its name implies. It rots the roots so badly that if not treated it can eventually kill the whole lawn. This fungus mainly spreads during the fall, winter and spring, when there is more moisture and cool or mild temperatures. By this time the damage is done as symptoms usually do not appear until the hot, stressful days of summer.

Some general rules to help avoid all three of these conditions are:

- Raise the height of your lawnmower to reduce stress.
- Avoid over watering/fertilizing.
- Maintain good drainage.
- Thin out tree branches to brighten super shady areas.
- Aerate your lawn once a year.
- At the first sign of disease, determine what it is and treat accordingly (It could be all three!).

The
Children's
Center
Of Austin



CCOA-STEINER RANCH
4308 N. Quinlan Park Rd.
Suite 100
Austin, TX 78732
512.266.6130

CCOA-JESTER
6507 Jester Boulevard
Building 2
Austin, TX 78750
512.795.8300

CCOA-WESTLAKE
8100 Bee Caves Rd
Austin, TX 78746
512.329.6633

Currently Accepting Student
Enrollment

Why we are Austin's best kept secret...

- Low Teacher/Student ratios
- Compassionate, Professional Teachers Committed to Your Child's Success!
- An Educational, Theme-Based Curriculum
- New Developmental-Based Infant Curriculum
- Special Events & Field Trips
- Art Studio, Computer Lab, Library & Gymnasium

Convenient Enrichment Activities:

- Spanish • Little Wing • Martial Arts
- Gym Station • Dance Adventures



childrenscenterofaustin.com

Reasons to “Scoop the Poop”

By Jennifer Magness, DVM

Dogs are a very popular pet and are found in many households. There are 70 million pet dogs in the United States alone. Opening up your home to a dog also means accepting responsibility for that pet, including cleaning up their waste. Most people have heard the term “scoop the poop” but some people may not have heard the reasons why this is so important. Some people view dog feces (or what most people call dog poop) as a good fertilizer, but this is actually a myth. Dog diets mostly contain animal products such as chicken and turkey. Thus, a dog’s waste contains substances created by the breakdown of the animal products. It does not enrich the soil for plants such as grass. If not picked up, dog feces can enter waterways via storm drains after it rains. Nitrogen in the feces depletes the oxygen from the water, and the water is made harmful to fish and other aquatics. It is often listed as the third leading cause of water pollution. Dog feces are also considered an environmental pollutant as it contains harmful organisms. One gram of dog feces

may contain as much as 23 million bacteria. Harmful bacteria such as Salmonella and E. coli can be found in dog feces. Parasites such as Giardia, Cryptosporidium, roundworms, hookworms and whipworms may also be found. Many of the parasites (usually in a resistant egg form) linger in the environment for years, even if the rest of the dog feces breaks down over time. Both bacteria and parasites are health hazards for both humans and animals that come in contact with them.

Besides the “ick” factor of stepping in dog poop and the unpleasant odor of it, dog feces can serve to attract pests (such as flies) and rodents (such as rats). Being a responsible pet owner and scooping your dog’s poop is important for the community health of both humans and animals. It helps improve local water quality. Scooping your dog’s poop also promotes favorable views towards dogs by others in the community.


ROCKY CREEK
Connection
Your Community at
Your Fingertips



Download the Peel, Inc. iPhone App



www.peelinc.com
512.263.9181





Create Yourself

THIS FALL

Filler Special

OCTOBER 8TH

Resurfacing Special

Schedule a free consult on laser resurfacing and get a Free Photofacial with any full face resurfacing procedure. Get an amazing transformation with only one procedure!



steiner ranch
dermatology

4300 N Quinlan Park Rd. #225
Austin, Texas 78732
512.266.0007 • atxderm.com

Photofacial Special




Only \$119* - The premier treatment for broken blood vessels and brown spots, the hallmarks of sun damage. Treatments leave brown spots much lighter and the skin refreshed and brighter.

* Limit 3 at the special price

Filler Special - October 8th Only

Juvederm, great for lips, smile lines, and deeper folds on the upper and lower face. First Syringe \$75.00 OFF, Second Syringe \$100.00 OFF,

SAFETY TIPS FROM THE TRAVIS COUNTY SHERIFF OFFICE

- 
- LOCK YOUR CARS!!!!
 - Get to know your neighbors! Report suspicious activity immediately!
 - Secure your vehicles, homes, garage doors at all times. (If you have an alarm, use it!) Remove garage door openers from your vehicle at night and when you are out of town.
 - Utilize timers for lights, radios, and televisions to give the appearance that someone is home when you are out of town.
 - Secure patio doors with a rod.
 - Keep the perimeter of your home well lit.
 - Take pictures of valuables and keep them stored in a secure location.
 - Keep an inventory of all serial numbers for valuable items that can be given to Law Enforcement to track your items if stolen.
 - Never leave a vacation message on your answering machine.
 - Have a friend or family member pick up newspaper and mail, or stop delivery until you return.
 - Keep shrubbery trimmed, to prevent hiding places.
 - Park in well-lit areas at night.
 - Do not leave valuables in plain sight. Lock them in the trunk or take them inside.
 - Organize a community watch program in your neighborhood.
 - Secure all windows and doors at all times.

CitizenObserver is being used by the Travis County Sheriff Office to communicate information to Citizens ranging from crime alerts and offender notifications. Be in touch with what's happening! Visit www.citizenobserver.com today and Be Informed!



Patrick Court
State Farm Agent
*Your Rocky Creek
Neighbor and
Insurance Agent*

5800 W SLAUGHTER LANE, SUITE 360 · AUSTIN, TX 78749

OFFICE 512-501-2837 · CELL 512-592-8001 · EMAIL PATRICK.COURT.UJL5@STATEFARM.COM

At no time will any source be allowed to use the Rocky Creek Connection contents, or loan said contents, to others in anyway, shape or form, nor in any media, website, print, film, e-mail, electrostatic copy, fax, or etc. for the purpose of solicitation, commercial use, or any use for profit, political campaigns, or other self amplification, under penalty of law without written or expressed permission from the Rocky Creek Homeowners Association and Peel Inc. The information in the Rocky Creek Connection is exclusively for the private use of Rocky Creek residents only.

DISCLAIMER: Articles and ads in this newsletter express the opinions of their authors and do not necessarily reflect the opinions of Peel, Inc. or its employees. Peel, Inc. is not responsible for the accuracy of any facts stated in articles submitted by others. The publisher also assumes no responsibility for the advertising content with this publication. All warranties and representations made in the advertising content are solely that of the advertiser and any such claims regarding its content should be taken up with the advertiser.

*The publisher assumes no liability with regard to its advertisers for misprints or failure to place advertising in this publication except for the actual cost of such advertising.

* Although every effort is taken to avoid mistakes and/or misprints, the publisher assumes no responsibility for any errors of information or typographical mistakes, except as limited to the cost of advertising as stated above or in the case of misinformation, a printed retraction/correction.

* Under no circumstances shall the publisher be held liable for incidental or consequential damages, inconvenience, loss of business or services, or any other liabilities from failure to publish, or from failure to publish in a timely manner, except as limited to liabilities stated above.

NOT AVAILABLE ONLINE



Free

Your newsletter is provided 100% Free of charge to your HOA ... and is made possible by the advertisers within.

Please frequent their businesses and let them know where you saw their advertisement.

While there, be sure to say "Thanks!"

www.peelinc.com



PEEL, INC.
community newsletters



Please remember to pick up after your pets and "scoop the poop"

STEVE'S PLUMBING REPAIR

Master License: M-39722

- Water Pressure Problems
- Sewer & Drain Service
- Fiber Optic Drain Line Inspections
- Free Estimates
- Satisfaction Guaranteed

Steve Brougher
512.276.7476

2605 Buell Ave





PEEL, INC.

308 Meadowlark St. South
Lakeway, TX 78734

PRSR STD
U.S. POSTAGE
PAID
PEEL, INC.

RCC

Management, Leasing and Real Estate Services for Residential and Commercial Properties.

LOOKING FOR CLIENTS SEEKING REALTOR® WHO IS:

- Specialized in MARKETING, DESIGN and STAGING
- A proficient and experienced NEGOTIATOR
- Creative and skilled in home PHOTOGRAPHY
- COMMITTED and FOCUSED; you are never delegated to an assistant for important tasks
- Lives, breathes and is knowledgeable in the LAKE TRAVIS area

CONTACT ME IF YOU THINK WE MIGHT BE A MATCH! 512-740-2300

EXCELLENT INVESTMENT
2 Family (DUPLEX)- Both units



*Committed to making your real estate experience
unforgettably awesome!*

Nicole Peel Broker/Realtor® Lic.# 0527640

 **PEEL REALTY 512.740.2300**

www.peelrealtyaustin.com