

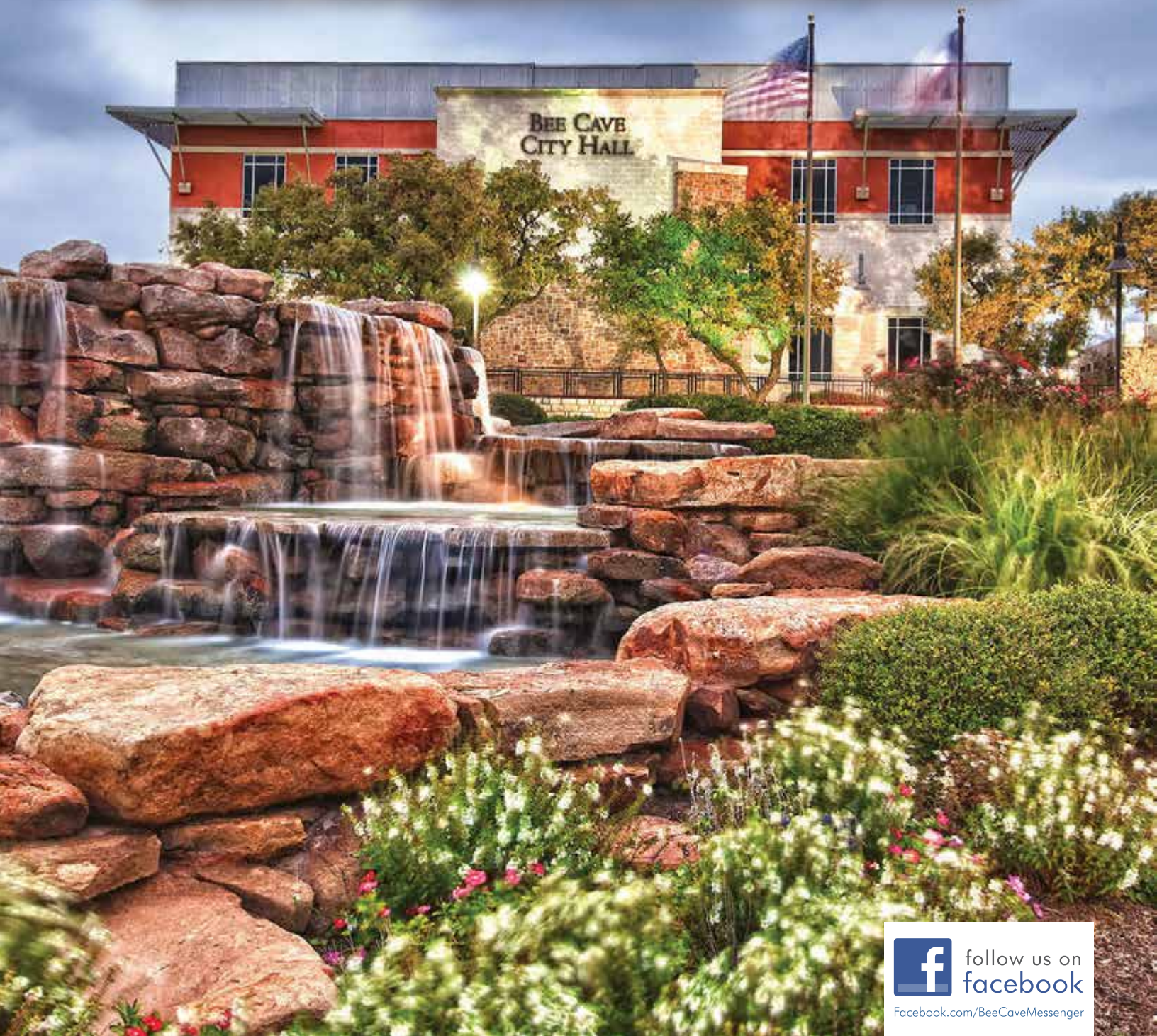


BEE CAVE *Messenger*

VOLUME 5, ISSUE II

NOVEMBER 2014

NEWSLETTER FOR THE RESIDENTS OF THE BEE CAVE AREA



follow us on
facebook

[Facebook.com/BeeCaveMessenger](https://www.facebook.com/BeeCaveMessenger)

INTRODUCING

Girls Night Out



THE HOLIDAY EVENT OF THE SEASON

JOIN US FOR AN INCREDIBLE EVENING OF
MARTINIS AND HORS D'OEUVRES
LIVE DEMONSTRATIONS &
INCREDIBLE DOOR PRIZES



NOVEMBER 20, 2014 6:30PM -9PM



Great Specials - One Night Only!

❄️ **Botox \$9.25/unit**

❄️ **Fillers (Voluma, Juvederm, Radiesse, Belotero):**

First Syringe \$75 off
2nd Syringe \$100 off
3rd+: \$125 off

❄️ **Fat Reduction:**

Exilis Small Area or Vanquish Large Area

One package 15% off
Two package 20% off
Three package 25% off

❄️ **LASER:**

"Forever Young" Photofacial:

\$109 each for face, chest, shoulders
or forearms/hands

❄️ **Lite MicrolaserPeel:**

Save \$100 on first, \$150 on Second



❄️ **Profractional Acne Scar Therapy**

Save 20% on purchase of 3 sessions



❄️ **Hair Removal:**

\$99 for 3 sessions underarm/bikini/or lip+chin
Full Leg - \$1500 - save \$900!

❄️ **SPA:**

NEW DermaPen Microneedling

\$350/session - includes intense growth factor
serum

❄️ **NEW Hydrafacial - give your skin a monthly gift!**

\$135 for one treatment
Prepurchase 6 at \$120 each
Prepurchase 12 at \$95 each


steiner ranch
dermatology

4300 N QUINLAN PARK RD. • SUITE 225 • AUSTIN, TEXAS 78732 • 512.266.0007 • ATXDERM.COM

ADVERTISING INFO

Please support the advertisers that make the Bee Cave Messenger possible. If you are interested in advertising, please contact our sales office at 512-263-9181 or advertising@peelinc.com. The advertising deadline is the 8th of the month prior to the issue.

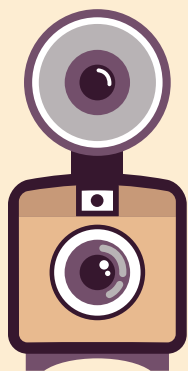
ARTICLE INFO

The Bee Cave Messenger is mailed monthly to all Bee Cave area residents. Residents, community groups, churches, etc. are welcome to include information about their organizations in the newsletter. Personal news for the Stork Report, Teenage Job Seekers, recipes, special celebrations, and birthday announcements are also welcome.

To submit an article for the Bee Cave Messenger please email it to beecave@peelinc.com. The deadline is the 15th of the month prior to the issue.

COVER PHOTO

Do you take amazing photos?



Do you take great photos? Would you like to see your photo published? We are looking for great cover photos for upcoming issues of the Bee Cave Messenger. Our deadline for submittals is always the 9th of the month prior to the issue. All photos should be submitted electronically by the deadline date in high resolution (300 dpi) to beecave@peelinc.com. Portrait (vertical) photos work best.

To view other photos submitted please visit www.PEELinc.com/BeeCave, and

view any of the past newsletters.

By submitting your photo you agree to allow your photo to be published in future issues of the Bee Cave Messenger or other Peel, Inc. publications. Call 512-263-9181 to find out how to have your business featured on the cover of the Bee Cave Messenger.

IMPORTANT NUMBERS

EMERGENCY NUMBERS

EMERGENCY	911
Fire.....	911
Ambulance.....	911
Police Department	512-314-7590
Sheriff – Non-Emergency.....	512-974-0845
Travis County ESD No.6/Lake Travis Fire Rescue	
Administration Office.....	512-266-2533
Travis County Animal Control.....	512-972-6060

SCHOOLS

Lake Travis ISD	512-533-6000
Lake Travis High School.....	512-533-6100
Lake Travis Middle School.....	512-533-6200
Lake Travis Elementary.....	512-533-6300
Hudson Bend Middle School	512-533-6400
Lake Pointe Elementary.....	512-533-6500
Lakeway Elementary	512-533-6350
Serene Hills Elementary	512-533-7400
Bee Cave Elementary.....	512-533-6250

UTILITIES

Travis County WCID # 17.....	512-266-1111
Lakeway MUD	512-261-6222
Hurst Creek MUD.....	512-261-6281
Austin Energy	512-322-9100
Pedernales Electric.....	888-554-4732
Texas Gas Service	
Custom Service.....	1-800-700-2443
Emergencies.....	512-370-8609
Call Before You Dig.....	512-472-2822
AT&T	
New Service.....	1-800-464-7928
Repair.....	1-800-246-8464
Billing.....	1-800-858-7928
Time Warner Cable	
Customer Service.....	512-485-5555
Repairs.....	512-485-5080
Austin/Travis County Hazardous Waste	512-974-4343

OTHER NUMBERS

Bee Cave City Hall.....	512-767-6600
Bee Cave Library	512-767-6620
Municipal Court	512-767-6630
Lake Travis Postal Office.....	512-263-2458
City of Bee Cave	www.beecavetexas.com

NEWSLETTER PUBLISHER

Peel, Inc.	512-263-9181
Editor.....	beecave@peelinc.com
Advertising.....	advertising@peelinc.com

Table of Contents

The Bee Cave Messenger is a private publication published by Peel, Inc. It is not sanctioned by any homeowners association or organization, nor is it subject to the approval of any homeowners association or organization, nor is it intended, nor implied to replace any publication that may be published by or on behalf of any homeowners association or organization. At no time will any source be allowed to use the Bee Cave Messenger contents, or loan said contents, to others in anyway, shape or form, nor in any media, website, print, film, e-mail, electrostatic copy, fax, or etc. for the purpose of solicitation, commercial use, or any use for profit, political campaigns, or other self amplification, under penalty of law without written or expressed permission from Peel, Inc. The information in the newsletter is exclusively for the private use of Peel, Inc.

DISCLAIMER: Articles and ads in this newsletter express the opinions of their authors and do not necessarily reflect the opinions of Peel, Inc. or its employees. Peel, Inc. is not responsible for the accuracy of any facts stated in articles submitted by others. The publisher also assumes no responsibility for the advertising content with this publication. All warranties and representations made in the advertising content are solely that of the advertiser and any such claims regarding its content should be taken up with the advertiser.

* The publisher assumes no liability with regard to its advertisers for misprints or failure to place advertising in this publication except for the actual cost of such advertising.

* Although every effort is taken to avoid mistakes and/or misprints, the publisher assumes no responsibility for any errors of information or typographical mistakes, except as limited to the cost of advertising as stated above or in the case of misinformation, a printed retraction/correction.

* Under no circumstances shall the publisher be held liable for incidental or consequential damages, inconvenience, loss of business or services, or any other liabilities from failure to publish, or from failure to publish in a timely manner, except as limited to liabilities stated above.

AROUND BEE CAVE

- 5 November Events at Hill Country Galleria
- 6 Tree Lighting Event at the Hill Country Galleria
- 8 Pictures with Santa Event at the Hill Country Galleria
- 10 Spicewood Arts Society
- 12 Tips for Maintaining Balance during the Holidays
- 14 Dress, Move, Help, Think, Eat Like A Superhero
- 14 Stork Report

SCHOOL NEWS

- 16 Blessings in a Backpack
- 17 LTHS Cavalettes to Sell Poinsettias

SPORTS NEWS

- 18 Tennis Tips
- 19 Lake Travis Youth Association

NEWS YOU CAN USE

- 20 Nature Watch
- 21 Carpenter Ants

IN EVERY ISSUE

- 22 Classifieds
- 22 Teenage Job Seekers



Making Spirits Bright

Christmas Decor
by Longhorn Services

Design • Installation • Maintenance • Post-Season Removal

512-837-4800

www.christmasdecor.net/longhornlights

Ask about our Commercial Decorating Services, too!

NOVEMBER EVENTS

at the Hill Country Galleria

November 1st

Saturday Night Concert Series, 7pm-9pm
featuring Foxtrot Uniform - Amphitheater

November 4th

Lake Travis ISD & Eanes ISD
Orchestra performance @ 10am, Amphitheater

November 8th

Saturday Night Concert Series, 7pm-9pm featuring
Tessy Lou & The Shotgun Stars - Amphitheater

November 13th

November Wine Walk 5pm-9pm – start at Twin Liquors

November 20th

8th Annual Tree Lighting & Santa's Arrival event 6pm-9pm
w/ FIREWORKS & live music– Amphitheater

November 27th

CLOSED – Thanksgiving Day



Go Solar!!!

- Lower your electric bills
- Great Austin Energy Rebate
- IRS Tax Credit
- Radiant Barriers Available
- Solar Direct will donate \$300 to your local school per install

Contact David at 512-529-4712 or dk@solardirectonline.com
for a free consultation and estimate.



Santa's Coming!

Join us for the
**8th Annual Tree Lighting
& Santa's Arrival Event**

Thursday, November 20th from 6pm-9pm
at the Hill Country Galleria


**Hill Country
GALLERIA**
OVER 100 SHOPS AND RESTAURANTS

Live Music by The Vintage 15 • Firework Show
Performance by Lake Travis High School Cavalettes

**Emceed by The CW Star,
-ANNAKA CHESNUTT-**

www.HillCountryGalleria.com • 512-263-0001
12700 Hill Country Blvd. Suite T-100 Bee Cave, Texas 78738
Located on Highway 71 between Bee Cave Road and Highway 620

RETIRE BETTER - A LIFETIME OF INCOME

THE GOOD OLD DAYS

WITH JOSH STIVERS

Do you remember when retirement planning consisted of working for the same company for 30+ years and then retiring with the company pension and social security and being set for the rest of your life?

Pensions were popular years ago because they were an incentive to attract and keep employees. Retirees could sleep well at night knowing that their former employer hired a professional money manager to look over their investments to ensure pension income would be paid on a regular basis.

Today, pensions have been replaced by "Defined Contribution" plans, where an employer pays cash into an investment product, but bears no responsibility for the future performance of the account. A 401k is an example that is owned and controlled by the employee that gets funded on a periodic basis by the employer.

The end result of defined contribution plans is the individual is now given the responsibility of making a lifetime of investment decisions instead of the professional pension fund manager. Many people in retirement or looking toward retirement are being forced to learn on the fly to do what pension managers did for their parents.

Pension funds are mandated to preserve capital at all costs, requiring fund managers to shield them from outsized risk and greed. Company employees did not have any oversight regarding allocation changes since the assets were pooled together. In essence, retirees were protected because they could not move their capital into riskier strategies like they can in a 401k or IRA.

Hence, pension funds were usually able to shield investors from the emotional side of investing.

As investors are now left to fend for themselves, it is up to them to control their emotions and avoid temptation to take on unnecessary risk with their retirement assets. Combine this reality with the fact that we are living much longer than past generations, and retirees have a far greater responsibility to remain prudent so their nest egg can last longer.

Individuals are now faced with the burden of doing the work of a pension fund manager in addition to their chosen field of expertise. On top of that, they must manage those funds for much longer than the pension manager due to longer life expectancies. It is more important now than ever to keep focused on the end game. Many people are choosing to create their own "pension fund" by putting a team in place to help manage their assets according to the standards that larger company and university funds have utilized for years. This gives the individual investor a much more balanced approach to building an investment plan to last a lifetime.

If you would like further information on this topic or to receive a copy of our report on retirement income planning, please send your requests to the email below. As always, we are here to answer your pressing questions and concerns regarding retirement investment planning.

Send your questions and information requests to retirebetter@platinumwealthadvisory.com.

512.369.3817

www.PlatinumWealthAdvisory.com

2802 Flintrock Trace, Ste. 221
Lakeway, TX 78738


PLATINUM WEALTH
ADVISORY



JOSH STIVERS

RETIREBETTER@PLATINUMWEALTHADVISORY.COM



Securities offered through GF Investment Services, LLC. Member FINRA/
SIPC. Investment Advisory Services offered through Global Financial
Private Capital, LLC, an SEC Registered Investment Adviser.



Around Bee Cave

Santa's on his way!

MEET SANTA AND TAKE YOUR
OWN PICTURES FOR FREE
AT THE HILL COUNTRY GALLERIA!

November

Sunday	Monday	Tuesday	Wednesday	Thursday	Friday	Saturday
16	17	18	19	20 Santa: 6PM-9PM Tree Lighting Ceremony	21 Santa: 4PM-8PM	22 Santa: 12PM-8PM
23 Santa: 12PM-6PM	24	25	26	27 CLOSED	28 Black Friday Santa: 12PM-8PM	29 Santa: 12PM-8PM

December

Sunday	Monday	Tuesday	Wednesday	Thursday	Friday	Saturday
30 Santa: 12PM-6PM	1	2	3	4 Santa: 4PM-8PM	5 Santa: 4PM-8PM	6 Santa: 12PM-8PM
7 Santa: 12PM-6PM	8	9	10	11 Santa: 4PM-8PM	12 Santa: 4PM-8PM	13 Santa: 12PM-8PM
14 Santa: 12PM-6PM	15 Santa: 4PM-8PM	16 Santa: 4PM-8PM	17 Santa: 4PM-8PM	18 Santa: 4PM-8PM	19 Santa: 4PM-8PM	20 Santa: 12PM-8PM
21 Santa: 12PM-6PM	22 Santa: 12PM-8PM	23 Santa: 12PM-8PM	24 Santa: 12PM-6PM	25 CLOSED		



www.HillCountryGalleria.com



CROSSFIT HIVE



**SEE our class
schedule on our
Facebook page**

**Located next
to Lake Travis
middle school**

**FREE
COMMUNITY WORKOUT**

EVERY SATURDAY @ 9AM

TWO FOR ONE
JOIN WITH A FRIEND AND RECEIVE
OUR INTRODUCTORY CLASS HALF OFF

EXP. 11/30/2014

512.296.0141 • 5004 BEE CREEK ROAD • BEE CAVE, TEXAS 78699

f FACEBOOK.COM/CROSSFITHIVE

Around Bee Cave

SPICEWOOD ARTS SOCIETY

When Dale Watson drove his big tour bus down the dirt road into Spicewood Vineyards the first Friday night in October, the place started “rockin’ “. The Austin Music Hall of Famer who has a fondness for his “truckin” songs, was filling in for his brother, Larry, who is the usual driver. Watson, raised in Pasadena Texas, has been placed by many country music followers alongside Willie, Waylon, and George Strait as one of the states’ finest singer/songwriters. The crowd was “2-steppin’ “ and “waltzin” most of the evening, however everyone became quieter and more reflective as the silver-haired 50’s something singer did one of his more sentimental hits “Giving My Daughter Away”.

This performance was the first in a series of live concerts Spicewood Arts Society will be hosting at the lovely Spicewood Vineyards where the babbling brook and rock waterfall are part of the quiet serene setting of the privately owned vineyard. Patrons sat on the wrap-around porch and enjoyed wines from the vineyards cellars before the show and during intermission.

The fun will keep going as Spicewood Arts Society presents a night of rhythm and blues featuring Austin’s Queen of Blues, Pamela Hart, with Nada Stearns and Thomas Hughes on November. 14th. Other groups slated to appear are Beto and the Fairlanes presenting their Christmas show, the versatile Albert and Gage, The Texas Gypsies, and a fabulous group of world –renown artists performing a tribute to jazz great Tony Campise.

Says Janey Richardson, Spicewood Arts Society President “We are pleased to celebrate this anniversary with you by bringing back many of our patrons’ favorite performers from over the years. This will be one of the highest energy and most entertaining years that SAS has provided”.

For more information or to purchase tickets visit Spicewood Arts Society’s Home of the Arts office/gallery at 9408B Hwy 71 in Spicewood, phone 512-264-2820 or go online to <http://www.spicewoodarts.org/>



Dale Watson and the Texas Lonestars



left to right, Janey Richardson, President, Spicewood Arts Society, Debbie Starnes, VP, Spicewood Arts Society, Pat Petrach, Business Mgr, Spicewood Arts Society, and Greg Hani, VPFine Arts, Spicewood Arts



Dale Watson and Spicewood Arts Society President, Janey Richardson



RESORT COMMUNITY & PRIVATE CLUB



Secure your dream home in Austin's premier luxury home community!

If it's finally time to relax and enjoy a low-maintenance lifestyle, don't miss your opportunity to own one of our exquisite lakeside villas or cottages, ready for immediate move-in. If your dream is to own a custom home from one of Austin's finest builders, stop by to view the seven homes under construction to be featured in Luxury Home Magazine's 2015 Tour of Homes. Purchase now to participate in the building of your very own showcase home!

VILLAS FROM THE \$700S

COTTAGES FROM THE \$600S

ONE ACRE HOMESITES FROM THE \$190S



Seven custom showcase homes
now under construction!

McCOMBS PROPERTIES

HAL JONES
DEVELOPMENT LLC

SPICEWOOD, TX
ReserveAtLakeTravis.com
1.800.214.3142

Five Tips to Maintaining Balance During the Holidays

Taking some time each day to take recover, rest and reflect can help you maintain balance and enjoy your holiday season.

It's easy to fill and then overfill our days during the holiday season. You may have a long list of traditions that you look forward to each year along with exciting events that come your way. Early in December, the festive spirit may have you saying "yes" to every invitation you receive. Once it all begins, you know you've overcommitted and stressed out if you find you'd rather lock yourself in your closet than see another sugar cookie. How do we make the most of the wonderful season without burning out and hiding away?

Here are a few tips to help you make the most of your holiday and stay in balance through all the eggnog, dinners and sparkling lights:

1. What are the traditions that you truly treasure?

Do you love seeing the lights and tree at Zilker? Do you enjoy remembering the past year as you write and send out a family update? Make a list of the things you don't want to miss this holiday and put those on the calendar first.

2. Are there any 'obligations' that you can gracefully decline?

Let's be honest. We all have some family or friend commitments we'd rather avoid. When Aunt Edna invites you to her Christmas party this year and asks you to bring the cheese ball that takes 15 hours to prepare, you can let her know you'd like to come but will bring a simpler dish. If the party just seems like

too much, maybe you decline but plan a time with your dear Aunt when you can enjoy each other's company without all the hubbub of a party.

3. Ask yourself what you need to be relaxed and in balance.

If you know that going to your yoga class or out for a morning walk helps your weeks to go smoothly, don't give that up! Make a commitment to take care of yourself during a potentially stressful season.

4. How much sleep do you really need?

Three late night parties in a row might sound like a great idea, but the second night without enough sleep and it might feel hard to keep it up. Anticipate your sleep-needs and allow yourself some restful night at home as you start marking your calendar.

5. Give yourself time to enjoy and time to re-enjoy.

One of the joys in life is time well spent with people we love. When we have appropriate unscheduled time we can re-enjoy these moments by remembering what we did, how we felt, the people we spent time with and even the smells, look and feel of a place and time. Reflecting on a special occasion is part of the pleasure of the experience. Allow yourself time to relax in the midst of the holiday season and spend time revisiting the good experiences and the meaning of the holiday celebrations you love.



This will be your LAST diet!

Based on reproducible science -

Women lose 3-5 pounds of FAT per week • Men lose 4-7 pounds of FAT per week

• No Drugs • No Gimmicks • 100% Natural • Medically Monitored • Lose ONLY Fat

Our Team



Dr. Hicks



Michele



Amy



Dawn



Chandler



Moay



Lori



Julie



Timi



Caroline

Ideal Weight Loss Medical Centers

Ideal Weight Loss Medical Clinics
(Austin/NW Austin)
4180 Duval Rd.
Building A, Suite 202
Austin, TX 78759
(512) 577-6181
idealweightlossmedicalclinics.com

Ideal Weight Loss Medical Clinics
(Westlake/Galleria)
12912 Hill Country Boulevard
Building F, Suite 238
Austin, TX 78738
(512) 577-6181
idealweightloss.com

NuBody Weight Loss Lounge
(Killeen)
2511 Trimmer Rd.
Killeen, TX 76547
(512) 577-6181
nobodyweightlosslounge.com
www.locations.org

A New You Weight Loss
(Round Rock)
1250 S. AW Grimes Boulevard
Round Rock, Texas 78664
512-310-7865
www.ANewYouRoundRock.com

Round Rock Institute for Weight Loss
(Round Rock)
301 Seton Parkway
Suite 400
Round Rock, TX 78665
(512) 577-6181
roundrockinstituteforweightloss.com

Around Bee Cave

DRESS, MOVE, HELP, THINK, EAT LIKE A SUPERHERO

Superhero Training Camp will bring hundreds of children to show how much of a superhero they can be at an event that is benefiting CASA of Travis County.

Dress, Move, Help, Think and Eat like a Superhero. Hundreds of children will learn how to be a superhero at the event Superhero Training Camp benefiting CASA charity at Key Martial Arts on November 15, 2014 from 1-4pm.

This will be an event to remember with many photographic moments. Kids and parents alike can enjoy hours of fun that "Turns Play into Power." Children will leave the event as a certified superhero.

- Dress like a Superhero in your favorite costume or create your own
- Move like a Superhero with tests of strength and speed
- Help like a Superhero by spreading good will and helping save others
- Think like a Superhero by completing games, riddles and puzzles
- Eat like a Superhero, having snacks & drinks that makes the body healthy and strong

SUPERHERO TRAINING CAMP EVENT DETAILS ARE:

- Date and Time: November 15 1pm-4pm
- Location: 1200 Lakeway Drive #5 Lakeway, TX 78734
- What: Family event, Party is for kids & their parents
- Price:
 - o \$10 for event= \$5 registration + \$5 for CASA of Lake Travis charity
 - o \$15 day of event=\$10 registration + \$5 for CASA of Lake Travis charity

Spots will fill up fast. Register for event at: <https://www.eventbrite.com/e/superhero-training-camp-tickets-13239057377>

CASA of Travis County speaks up for children who've been abused or neglected by empowering our community to volunteer as advocates for them in the court system. When the state steps in to protect a child's safety, a judge appoints a trained CASA volunteer to make independent and informed recommendations in the child's best interest. Learn more about

CASA of Travis County at www.casatravis.org.

For more information on event please contact Krista Payne at 512-293-8682 or at krista@keylakeway.com. To find more information on event go to www.keylakeway.com/hero or www.facebook.com/superheroesHQ



Bee Cave Stork Report

Congratulations!

Let us help celebrate... email info on the arrival of your little one to beecave@peelinc.com.




**A view of the
world from
the Texas
Hill Country**

Offering rolling
admission for
select placements.

Nursery through
Middle School.

4402 Hudson Bend Rd.
Austin, TX 78734
(512) 351-3403.




**International
School of Texas**
www.internationalschooloftexas.com

COBIS
International School of Texas admits
students of any race, color and national
or ethnic origin.

SHEN YUN

神韻晚會

DEC 26-29 | LONG CENTER

“Mesmerizing!

Reclaiming the divinely inspired
cultural heritage of China.”

— Donna Karan, creator of DKNY

**5,000 YEARS OF CIVILIZATION.
LIVE ON STAGE!**



TICKETS: ShenYun.com | 512.474.LONG(5664)



PRESENTED BY
SOUTHERN USA FALUN DAFA ASSOCIATION

SCHOOL MINISTRY: SPIRIT IN THE HILLS

A spirit of gratitude and caring is moving through the hills of the Spicewood, Bee Cave, and Lakeway areas. This spirit is personified by the people of Spirit in the Hills Lutheran Church who desire to share their blessings with some less fortunate children attending Spicewood Elementary School.

Upon learning that around 41% of those students receive reduced cost or free lunches, Spirit in the Hills knew they wanted to help in some way. They turned to St. Peter's Lutheran Church in Marble Falls, Texas who implemented a national program called "Blessings in a Backpack" at Highlands Elementary School in Marble Falls Independent School District (MFISD). The goal of the program is to make sure no student goes hungry over the weekend during the school year. Nonperishable, kid-friendly food from three of the four essential food groups is sent home with selected students each Friday, with the backpacks being returned the next Monday. Leslie Baty, Principal of Spicewood Elementary School, (MFISD) identified the need for a similar program.

With the help of Anna Womack and St. Peter's Lutheran Church, Spirit in the Hills implemented "Blessings in a Backpack" at Spicewood Elementary School for the school year 2013-2014.

Cathy Ellis, the school counselor, was integral in setting up the program and identified 25 students, prekindergarten - 5th grade, to receive weekly backpacks of food. Members of Spirit in the Hills provide support by sponsoring the students for a year as well as volunteering to fill the backpacks each week.

The impact has been immense! It has been well received by the school staff, families, and members of the faith community. The staff expresses their appreciation. Spirit in the Hills volunteers are frequently stopped in the school hall with an enthusiastic "Thank You". According to Principal Baty, "it surely has been a great program for our students who need it."

The children look forward to receiving the backpacks every Friday. The backpack is considered an honor, as well as an assurance the child will have food over the weekend. Perhaps the best measure of success of the program is the fifth grader that came forward to the Counselor with a simple "Thank You". Words cannot adequately express the joy that fills the hearts of those who are helping make this program a success.

Spirit in the Hills continues to sponsor the program for the coming school year, 2014-2015, and is signing up volunteers for

(Continued on Page 17)

Why choose Primrose® for Pre-K and Kindergarten?

Just Ask a Mom.®

"As an educator, I know what my children need in order to be ready when they leave Primrose. My son, who attended Pre-K at Primrose, was more than ready for Kindergarten."

Augustus James' Mom, Primrose Parent

- Proprietary Balanced Learning® System
- Degreed lead teaching staff
- Assessment shows Primrose students perform at about twice the level of their peers

Educational Child Care for Infants through Private Kindergarten and After School



Primrose School of Bee Cave
3801 Juniper Trace, Austin, TX 78738
512.263.0388 | PrimroseBeeCave.com



©2014 Primrose School Franchising Company. All rights reserved.

(Continued from Page 16)

the weekly duties of preparing the backpacks. If you are interested in helping with this ministry or wish further information, please contact Phyllis Youngdahl at hungercreek@hotmail.com or Pastor Liz Henley at pastorliz@spiritinthehills.org.

Spirit in the Hills Lutheran, located at 3001 RO Drive in Spicewood, is a joint MISSION of the Evangelical Lutheran Church in America (ELCA), Shepherd of the Hills Lutheran Church in West Lake Hills, Lakeway and ST. Peter's Lutheran Church in Marble Falls, Texas. Interested persons are cordially invited to worship with them on Sundays at 10:00 a.m. with Faith Formation gatherings at 9:15 a.m.

LTHS

CAVALETTES TO SELL POINSETTIAS!

The LTHS Cavalettes and Red Rubies dance teams are now taking orders for Christmas Poinsettias! These are beautiful, large 17" Poinsettias in a 6.5" pot. Orders are being taken October 7th through November 7th and will be delivered to your door on November 30th.

Cost for these beautiful poinsettias is \$12 each and a portion of the sale goes to support the Cavalettes and Red Rubies! For more information or to place an order, contact a Cavalette or Red Ruby you know, email lthcavalettes@gmail.com, or go to www.LakeTravisCavalettes.com and click on the Poinsettias link.



REACHING YOUR NEIGHBORS

and many others...

- Avery Ranch
- Barton Creek
- Bee Cave
- Bella Vista
- Belterra
- Canyon Creek
- Circle C Ranch
- Courtyard
- Davenport Ranch
- Forest Creek
- Highland Park West Balcones
- Hometown Kyle
- Hunter's Chase
- Jester Estates
- Lakeway
- Lakewood
- Legend Oaks II
- Long Canyon
- Lost Creek
- Meadows of Bushy Creek
- Meridian
- Pemberton Heights
- Plum Creek
- Prairie on the Creek
- Ranch at Brushy Creek
- River Place
- Round Rock Ranch
- Sendera
- Shady Hollow
- Sonoma
- Steiner Ranch
- Stone Canyon
- Tarrytown
- Teravista
- Travis Country West
- Twin Creeks
- Villages of Western Oaks
- West Lake Hills
- Westside at Buttercup Creek
- Wood Glen

FOR ADVERTISING INFORMATION

Call Today 512-263-9181

www.PEELinc.com
advertising@PEELinc.com

PEEL, INC.
community newsletters



TENNIS TIPS

By USPTA/PTR Master Professional
Fernando Velasco



STEP 1



STEP 2



STEP 3



STEP 4

The Modern Game: The Swinging Backhand Approach Shot or Volley

In previous newsletters, I offered tips on how to execute the basic strokes for players who are just beginning to play tennis or who want to resume playing.

I am now offering suggestions on how to play the “modern” game mostly geared towards players who are happy with hitting the ball over the net and controlling the point with consistency. These players may be already playing for leagues or in tournaments and are looking for more “weapons” on the court.

In this issue, I will offer instructions on how to execute “The Swinging Backhand Approach Shot or Volley.” This shot is used when an opponent hits a soft shot that is floating high on the service line area. The player will take advantage and will hit the ball on the fly with a huge swing, thus hitting with top spin high over the net and hit with power. When the ball hits the court, it will take a big hop, forcing the opponent to fall back close to the fence, or to hit the ball on the rise. This shot can be used as a “winner” or as an “approach shot.”

In the illustrations, Vishwa Aduru, one of the top players of the Grey Rock Tennis Academy, shows the proper technique to execute this stroke. Vishwa is coached by the Director of the Tennis Academy, Darin Pleasant.

Step 1: The Back Swing: When Vishwa sees the opportunity, he makes a quick turn of his upper body and takes the racket high and back. The head of the racket is now at shoulder height, his shoulders are turned, the left hand is gripping the racket tight and the right hand is semi-relaxed. His weight is on the front foot as his momentum carries his forward to attack the ball. His left wrist is “laid back” to allow maximum point of contact.

Step 2: The Point of Contact: The success of a top spin shot is keeping the ball on the strings going from low to high in a 30 degree angle and accelerating the racket head around the outside of the ball. Vishwa started the swing high and “looped” it to allow the head of the racket to drop down. He will be brushing around the outside of the ball as he makes contact with it. His left shoulder is almost opening and his weight is moving through the shot.



LTYA is a privately funded, not-for-profit organization founded in 1978 to provide safe, fun, friendly and affordable recreational opportunities for the youth of Lake Travis. Today, we serve over 4,500 youth in our 9 sports programs and activities annually and we need your support.

Providing positive and safe sports for all children that teach basic values they can count on in their lives. We know how important the youth sports experience is for the children and that is the reason we teach the importance of teamwork, cooperation and hard work.

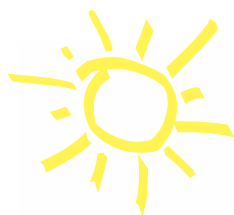
Register online at www.LTYA.net

512.261.1900

Baseball • Football
Basketball • Cheer
Golf • Soccer • Softball
Tennis • Volleyball



The Children's Center Of Austin



Why we are Austin's best kept secret...

- Low Teacher/Student ratios
- Compassionate, Professional Teachers Committed to Your Child's Success!
- An Educational, Theme-Based Curriculum
- New Developmental-Based Infant Curriculum
- Special Events & Field Trips
- Art Studio, Computer Lab, Library & Gymnasium

Convenient Enrichment Activities:

- Spanish • Little Wing • Martial Arts
- Gym Station • Dance Adventures

CCOA-STEINER RANCH
4308 N. Quinlan Park Rd.
Suite 100
Austin, TX 78732
512.266.6130

CCOA-JESTER
6507 Jester Boulevard
Building 2
Austin, TX 78750
512.795.8300

CCOA-WESTLAKE
8100 Bee Caves Rd
Austin, TX 78746
512.329.6633

Currently Accepting Student Enrollment



childrenscenterofaustin.com

NATUREWATCH

by Jim and Lynne Weber

WHAT GALL!

In nature, galls refer not to brazen behavior but to abnormal outgrowths on the surface of certain life forms. Plant galls, or cecidia, can be caused by various parasites from fungi to bacteria as well as by insects and mites. In the United States there are over 2000 species of gall-inducing insects, and the majority are reported to form galls on oak trees.

The formation of a gall begins with the hatching of the eggs of certain wasp species laid on the plant. It progresses when the larvae (or the adult female) injects chemicals into the plant, and the tissue swells in reaction, forming a spherical microhabitat around the larvae. The gall's purpose is twofold, providing the larvae with nutrients and protecting them from predators. Once fully grown, the all-female, adult insects bore an exit hole out to the surface of the gall and disperse.

While usually forming in the spring when the most rapid plant cell division occurs, galls initially appear light green in color but become even more noticeable in the fall when oak trees drop their leaves. Dull, dry, and brown, the spent galls are often scavenged by mammals searching for leftover food as winter approaches.

Gall-inducing insects are usually species-specific and sometimes even tissue-specific (branches, leaves, buds, roots) in the plants they select. In central Texas, most of the gall-inducing insects are gall wasps, and while they are closely associated with several species of our native oaks, they can also be identified by the types of galls they produce.

In general, you may find leaf galls with orangish 'hair' formed by the Hedgehog gall wasp, and sticky, spongy galls on twigs with seed-like structures inside formed by the Wool sower gall wasp. On live oaks, you can find woody twig and stem galls formed by the Mealy oak gall wasp, and leaf galls formed by the Woolly leaf gall wasp. The oak apple wasp, however, prefers our red oaks and forms spherical, spongy-filled galls.

Gall-making insects are generally not considered pests, and some galls are even considered attractive and are used in flower arrangements and other crafts. While certain species may cause some aesthetic damage to a plant such as leaf discoloration or early defoliation, most of these insects do not permanently damage the host plant, but just use them to further their own purpose. What gall!

Send your nature-related questions to naturewatch@austin.rr.com and we'll do our best to answer them. If you enjoy reading these articles, check out our blog at:

naturewatchaustin.blogspot.com



Hedgehog gall on white oak (photo by J. Hahn)



Hedgehog gall on white oak (photo by J. Hahn)



Hedgehog gall on white oak (photo by J. Hahn)

TEXAS A&M AgriLIFE

CARPENTER ANTS

Carpenter ants nest outdoors in dead wood (tree stumps or dead limbs, fences, firewood, etc.). They may also be found in wood siding, beams, joists, fascia boards or trim on structures. Damage is usually limited since carpenter ants tunnel and nest within wood; they do not eat wood. However, wood can become weakened by carpenter ant excavation.

Carpenter ants are large ants that can vary in color from all black to reddish to yellowish or a combination of colors. These ants have one node, no stinger and a circle of hairs at the tip of their abdomen.

Galleries in the nest are excavated following the grain of the wood and have clean, smooth walls. Nest locations may be discovered by searching for piles of sawdust-looking material under exit holes. Sawdust is coarse and may also contain soil or sand, uneaten insects as well as dead ants from the colony.



Carpenter ants are able to enter homes from tree branches or utility lines touching the home, through cracks and crevices around windows and doors, cracks in foundation walls, ventilation openings or heating and air conditioning ducts.

HERE ARE SOME TIPS FOR A CARPENTER ANT INFESTATION:

- Remove dead trees and/ or limbs and remove tree stumps from the landscape. Many times you can remove the (possible) nesting sites and get rid of the ants without using pesticides.
- Prune trees and shrubs that touch the home. Carpenter ants will often use these areas as a bridge to enter the home.
- Replace wood that is water damaged. Carpenter ants are drawn to moisture damaged wood, so make sure to repair any water leaks and replace damaged wood.
- Remove wood debris and firewood that is near the home. Carpenter ants may nest in firewood and when it is stacked right next to the home, it allows the ants to enter more easily.

For more information or help with identification, contact Wizzie Brown, Texas A&M AgriLife Extension Service Program Specialist at 512.854.9600.



Your Community at Your Fingertips



Download the Peel, Inc. iPhone App



www.peelinc.com

512.263.9181



Business Section

BUSINESS CLASSIFIEDS

A NEW EPISCOPAL CHURCH is being started in the Lake Travis area to help connect people with God, one another, and the world. For more information contact the Rev. Paul Johnson at 512-695-2803, orpjohnson@epicenter.org or go to www.facebook.com/cceaustin.

PRIVATE SPANISH LESSONS: Native Spanish speaker with 20+ years teaching experience available for lessons at FalconHead. Flexible curriculum - conversation, grammar, reading, spelling, writing and comprehension. Ideal for business and travel. Adults only, \$50/hr. All levels welcomed. Discounted packages available. (512)424-9245 - nonymsol@gmail.com

Classified Ads

Business classifieds (offering a service or product line for profit) are \$65, limit 40 words, please contact Peel, Inc. Sales Office at 512-263-9181 or advertising@PEELinc.com.

ADVERTISING INFO

Please support the advertisers that make Bee Cave Messenger possible. If you are interested in advertising, please contact our sales office at 512-263-9181 or advertising@peelinc.com. The advertising deadline is the 8th of the month prior to the issue.

SEND US YOUR *Event Pictures!!*

Do you have a picture of an event that you would like to run in this newsletter? Send it to us and we will publish it in the next issue. Email the picture to beecave@peelinc.com. Be sure to include the text that you would like to have as the caption. Pictures will appear in color online at www.PEELinc.com.



NOT AVAILABLE ONLINE

STEVE'S PLUMBING REPAIR

Master License: M-39722

- Water Pressure Problems
- Sewer & Drain Service
- Fiber Optic Drain Line Inspections
- Free Estimates
- Satisfaction Guaranteed

Steve Brougner
512.276.7476

2605 Buell Ave





wildwood

beyond your wildest dreams



Luxury,
low-maintenance
living...



Homes Starting in the \$330s

AMENITIES INCLUDE:

- Barrel Tile Roofs, Stucco and Stone Exteriors
- Covered Patios for Outdoor Living
- Lake Travis ISD
- All Single Story Homes
- Low Property Tax Rate
- All Lawn Maintenance Included
- Community Pool & Cabana
- Energy Efficient - Rated by Austin Energy Green Building
- Homesites with Texas Hill Country Views
- Move-in Ready Homes Available



in a home
that is just
right...

Wildwood is Selling Quickly...
Call Now to Schedule a Tour of Your New Home!

ASHCREEK
H O M E S
Creative Communities

13907 YELLOW BELL BEND
BEE CAVE, TX 78738
www.AshCreekHomes.com
512-328-2122

Named Austin's Top Green Builder for 3 years in a row by the Austin Business Journal



for
your next
chapter!



PEEL, INC.

308 Meadowlark St. South
Lakeway, TX 78734

PRSR STD
U.S. POSTAGE
PAID
PEEL, INC.

BEE

1211 Lakeshore Dr. Spicewood, TX 78669

INCREDIBLE INVESTMENT OPPORTUNITY! Lakeside retreat built in 2010, ready for move-in, amazing hill country views will only get better as lake rises!! Super cute custom build, floor to ceiling windows, kitchen open to family room, SS appliances, granite countertops, massive cedar deck borders entire back of the house, covered patio below, loft upstairs great for extra bedroom, great curb appeal near other newly built homes, perfect for weekend getaway or everyday living! Less than 10 min to HWY 71 & Pace Bend!

\$300,000

MLS# 1546997



*Committed to making your real estate experience
unforgettably awesome since 2004!*

Nicole Peel Broker/Realtor® Lic.# 0527640



PEEL REALTY 512.740.2300

www.peelrealtyaustin.com