



Newsletter for the Residents of Lakeway

Lakeway VOICE

Volume 6, Issue 12
December 2014

GREATER LAKEWAY • ROUGH HOLLOW • THE HILLS • BELLA MONTAGNA • RIDGE AT ALTA VISTA • THE PRESERVE • FLINTROCK FALLS



follow us on
facebook

[Facebook.com/LakewayVoice](https://www.facebook.com/LakewayVoice)

GIVE THE GIFT OF BEAUTY THIS HOLIDAY SEASON



PURCHASE \$100 GIFT CARD - GET \$25 BONUS
PURCHASE \$200 GIFT CARD - GET \$50 BONUS
PURCHASE \$300 GIFT CARD - GET \$75 BONUS

STOCKING STUFFER SPECIALS!!
MICRODERMABRASION ONLY \$50
EXPRESS FACIAL ONLY \$50
HYDRAFACIAL ONLY \$125



512.266.0007 • atxderm.com

ADVERTISING INFO

Please support the advertisers that make Lakeway Voice possible. If you are interested in advertising, please contact our sales office at 512-263-9181 or advertising@peelinc.com. The advertising deadline is the 8th of the month prior to the issue.

ARTICLE INFO

The Lakeway Voice is mailed monthly to all Lakeway residents. Residents, community groups, churches, etc. are welcome to include information about their organizations in the newsletter. Personal news for the Stork Report, Teenage Job Seekers, recipes, special celebrations, and birthday announcements are also welcome.

To submit an article for The Lakeway Voice please email it to lakeway@peelinc.com. The deadline is the 15th of the month prior to the issue.



A view of the world from the Texas Hill Country

Offering rolling admission for select placements.

Nursery through Middle School.

4402 Hudson Bend Rd.
Austin, TX 78734
(512) 351-3403.

International School of Texas
www.internationalschooloftexas.com

COBIS
International School of Texas admits students of any race, color and national or ethnic origin.

IMPORTANT NUMBERS

EMERGENCY NUMBERS

EMERGENCY	911
Fire.....	911
Ambulance.....	911
Police Department	512-314-7590
Sheriff – Non-Emergency.....	512-974-0845
Travis County ESD No.6/Lake Travis Fire Rescue	
Administration Office.....	512-266-2533
Travis County Animal Control.....	512-972-6060

SCHOOLS

Lake Travis ISD.....	512-533-6000
Lake Travis High School.....	512-533-6100
Lake Travis Middle School.....	512-533-6200
Lake Travis Elementary.....	512-533-6300
Hudson Bend Middle School	512-533-6400
Lake Pointe Elementary.....	512-533-6500
Lakeway Elementary	512-533-6350
Serene Hills Elementary	512-533-7400
Bee Cave Elementary.....	512-533-6250

UTILITIES

Travis County WCID # 17.....	512-266-1111
Lakeway MUD	512-261-6222
Hurst Creek MUD.....	512-261-6281
Austin Energy	512-322-9100
Pedernales Electric.....	888-554-4732
Texas Gas Service	
Custom Service.....	1-800-700-2443
Emergencies.....	512-370-8609
Call Before You Dig.....	512-472-2822
AT&T	
New Service.....	1-800-464-7928
Repair	1-800-246-8464
Billing.....	1-800-858-7928
Time Warner Cable	
Customer Service.....	512-485-5555
Repairs.....	512-485-5080
IESI (Trash & Recycle).....	512-282-3508
Austin/Travis County Hazardous Waste	512-974-4343

OTHER NUMBERS

Lake Travis Community Library.....	512-263-2885
Lake Travis Postal Office.....	512-263-2458
Lakeway City Hall.....	512-314-7500
City of Lakeway	www.lakeway-tx.gov

NEWSLETTER PUBLISHER

Peel, Inc.	512-263-9181
Editor.....	lakeway@peelinc.com
Advertising.....	advertising@peelinc.com

Table of Contents

COVER PHOTO

Do you take great photos?

Do you take great photos? Would you like to see your photo published? We are looking for great cover photos for upcoming issues of the Lakeway Voice. All photos submitted must represent Lakeway.

Our deadline for submittals is always the 9th of the month prior to the issue. All photos should be submitted electronically by the deadline date in high resolution (300 dpi) to lakeway@peelinc.com. Portrait (vertical) photos work best.

By submitting your photo you agree to allow your photo to be published in future issues of the Lakeway Voice or other Peel, Inc. publications. Call 512-263-9181 to find out how to have your business featured on the cover of the Lakeway Voice.

BUSINESS CLASSIFIEDS

CONNOR CLEANING SERVICES - Are you paying more than \$100 to have your house cleaned? 4200 sq. feet or less- you are paying too much! Call Connor Cleaning. Reliable. Dependable Service. Quality Work. Supplies furnished. Over 12 years in business. Affordably priced. Call 512-209-1141. Bonded.

JEN'S PAWS2CLAWS PET SITTING - 512.261.0493: Holidays are fast approaching! Keep your pets, family and property safe. I offer customized and personalized pet, people and home care to fit your needs. Your trusted Lakeway neighbor since 1996. Call Jennifer for free consultation. Insured Bonded & Permitted.

FACIALS & WAXING: Great prices and quality service in my independent spa room. Located close on RR620. Over 14 years experience. \$20 off a facial for 1st time clients. Winter peels starting at \$40.00. For appointment call 512-694-0918. www.SkinSpaLakeway.com. Check out my reviews on Yelp.

WE BUY YOUR GOLF BALLS. Email to golfballhouse@gmail.com or call at 512 470-7252

PERSONAL CLASSIFIEDS

WANTED: Looking for a small year-round hunting lease for my small family of four. Turkey, deer and/or hogs. Preferably within two hours of Austin. Bow hunter and hunter education certified. I'm wanting to continue teaching my children about outdoor education and spending quality time with them outdoors. 512-589-5471.

AROUND LAKEWAY

- 6 Lights On!
- 6 Celebrate the Holiday Season at Lakeway's Big Band Bash
- 8 Lakeway Women's Club and Dillard's Go for Style
- 10 Be Healthy, Lake Travis!
- 12 Lake Travis Community Library Feedback Requested
- 13 Artist Spotlight: Emmy Coffey
- 13 Green Santa Rides Again
- 14 Feast on Live Music at Lakeway's Brown Bag Concert Series
- 14 All Things Wild
- 15 Lakeway Hills Solos Activities

SPORTS NEWS

- 16 Lakeway Ladies Group

NEWS YOU CAN USE

- 18 2014 Holiday Shows and Winter Break Camps
- 18 Winter Averaging Began November 17
- 20 Check Presentation to the Lake Travis Community Library
- 21 Take Care of Texas

IN EVERY ISSUE

- 4 Classifieds
- 22 Teenage Job Seekers



STEVE'S PLUMBING REPAIR

Master License: M-39722

- Water Pressure Problems
- Sewer & Drain Service
- Fiber Optic Drain Line Inspections
- Free Estimates
- Satisfaction Guaranteed

Steve Brougner
512.276.7476

2605 Buell Ave





TIRED OF THE TRAM, SHUTTLE & STAIRS?



We Have The Place: Reserve at Lake Travis Marina!

NONE OF THE HASSLES | GOLF CART ACCESSIBLE

The Reserve Marina offers nearby parking and golf cart access to all boat docks.
We also offer concierge service - call ahead and your boat will be stocked and ready to go!

Only 18 slips available!

Marina Features

- 100% Shaded & Golf Cart Accessible
- 160 Total Covered Slips
- Certified Clean Marina
- Concierge Service
- Potable Water & Electrical Hookups
- Waste Water Pump Facilities Located At Your Slip
- Fantastic Lake Side Patios Adjacent to Your Slip on D, E, F Docks



Contact Mike Brooks | C: 512-745-3954 | O: 512-402-1400 | ReserveAtLakeTravisMarina.com

McCOMBS PROPERTIES HAL JONES
DEVELOPMENT LLC

Around Lakeway

LIGHTS ON!

to kick off Lakeway's Trail of Lights

Follow the glow to the City of Lakeway's free annual Lights On! celebration from 6-8 p.m. Dec. 5 at the city's Trail of Lights behind Lakeway City Hall, 1102 Lohmans Crossing. Santa, Mrs. Claus and Rudolph will speak to all of the good little boys and girls of Lakeway and plug in the Trail of Lights display that features thousands of holiday lights in seasonal tableaux accompanied by holiday music. Join the Parks and Recreation Department for complimentary marshmallow roasting in the parking lot at City Hall at the corner of Sailmaster Street and Lohmans Crossing and enjoy hot chocolate for purchase from IceCream2U.

"Lights On! can get chilly, but the warmth of the lights, Santa and Mrs. Claus' smiles and the community coming together to enjoy the holiday season makes it all worthwhile," said Andra Dearing, Lakeway Parks and Recreation director.

The city also will collect donations of nonperishable food items to benefit Lake Travis Crisis Ministries. The Trail of Lights continues nightly from 6 p.m.-midnight through the end of the month.

Please do not bring dogs to the event or on the trail. Bicycles, scooters, skateboards or motorized vehicles are also prohibited.

Parking is available at Lakeway Activity Center, 105 Cross Creek, and at Lakeway Village Square. Take the sidewalk at the bottom of the Activity Center parking lot to reach the City Hall parking lot. For information, call 512-314-7532.



CELEBRATE THE HOLIDAY SEASON AT LAKEWAY'S BIG BAND BASH

*Now Dashers! Now Dancers! Now Prancers, and Mixers!
On, Bill Haley and His Comets! On, Cupids! On, Donners and Blitzens!
To the top of the porch! To the top of the wall!
Now dance away! Dance away! Dance away all!*

All the dancing and prancing reindeer will fly to Lakeway's Big Band Bash Before Christmas from 8-10 p.m. Dec. 8 at Lakeway Activity Center, 105 Cross Creek. The Republic of Texas Band featuring Lakeway singers David Cummings and Lisa Clark will fill the ballroom with a wide variety of favorite tunes, mostly from the Sinatra era, with fresh arrangements.

Anyone may dance or tap their toes as they listen to Kent Dugan's 17-piece orchestra, which consistently appeals to dancers of many generations. Lakeway Arts Committee sponsors the free event, but donations to the band are encouraged. There is a large dance floor and plenty of tables. Guests may bring refreshments, if desired, as none are provided. There are no reservations. Doors open at 7:30 p.m.

"Get your dancing shoes polished, dress up a bit — not formal — and come out to dance and listen to some really great music," Arts Committee Chairman Fred Newton said. "This monthly event is another reason why living in Lakeway is so much fun."

For information, call Lakeway Activity Center at 512-261-1010.





START THE NEW YEAR OFF WITH CONFIDENCE.

PLATINUM WEALTH
ADVISORY IS OFFERING FREE
RETIREMENT INVESTMENT
PLAN CONSULTATIONS THRU
JANUARY 31, 2015.

IT'S TIME FOR A 2ND OPINION.

Josh Stivers

512.369.3817

RETIREBETTER@platinumwealthadvisory.com



www.PlatinumWealthAdvisory.com

Around Lakeway

Lakeway Women's Club and Dillard's Go for Style

The Women's Club of Greater Lakeway RUNWAY '14 style show attracted 279 members to the Lakeway Resort and Spa on Oct. 27. The event featured fashions, shoes and accessories provided by Dillard's-Hill Country Galleria, modeled by Women's Club members who rocked and rolled to contemporary hits.

"Dillard's was so gracious to work with us again this year. Not only did they provide the fashions but also sales staff to help our models dress and change. We could not do this show without Dillard's support," said event co-chair Suzie Leggio.

Co-chair Vickie Taylor also thanked Lakeway Resort and Spa, Flowers by Nancy, too!, Transformation Salon, and Mike Heyse of the resort's event technology group for their contributions. "So many helped make this event a success. Suzie and I appreciate how many of our members and area businesses chipped in to help," Taylor said.

Emcee Joyce Christian led off with a sassy, stylized introduction that set the tone for five segments, featuring outer wear, fitness, travel, casual and "Lakeway Haute" designs. The event's theme colors were a deep orange, bright blue, black and dark yellow, which carried out in floral centerpieces, name tags, posters and programs.

"We wanted this to be a contemporary event, with modern colors and fashions that women would want to wear," Leggio said.

"From the beginning Suzie and Vickie wanted to do something unique, and, from the way members rushed to see the clothes after the show, I think their concept succeeded. Best of all, our members had a great time," said WCGL president Kitty Lichty.

For more information about Women's Club of Greater Lakeway, please see LakewayWomensClub.com.



WCGL style show co-chairs Suzie Leggio and Vickie Taylor celebrate the success of RUNWAY '14.



Stealing the show Sasha is a Havanese-Maltese mix, owned by model Kendra Diamond.



Models Ernie Clay and Linda Buikema rock at the Women's Club's style show at Lakeway Resort and Spa.

LONGHORN VILLAGE

A New Brand of Retirement Living

Independent Living Villas & Apartments
Assisted Living | Skilled Nursing & Rehabilitation | Memory Care

12501 Longhorn Parkway • In Steiner Ranch
Austin, Texas 78732

(512) 382-4680 • www.longhornvillage.com

Managed by Life Care Services™

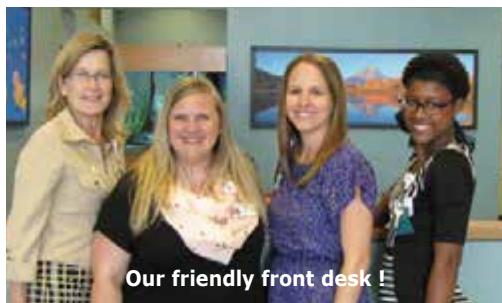


ADVERTISE
Your Business Here
Call 512.263.9181
for details.

www.peelinc.com

Happy Holidays from ADC!

The Austin Diagnostic Clinic Steiner Ranch doctors and staff wish you and your family a healthy, happy holiday.



Our friendly front desk!



Dr. Vander Straten, Dr. Willis & Dr. Urukalo

ADC Steiner Ranch Specialists & Services

- **Allergy & Asthma**, Scott Oberhoff, M.D.
- **Dermatology**, Melody Vander Straten, M.D.
- **ENT**, Richard Bryarly, M.D.
- **Family Practice**, Vimal George, M.D. and Brenna Gerdelman, M.D.
- **Neurology**, Patrick Nolan, M.D., Ph.D.
- **Pediatrics**, Theresa Willis, M.D.
- **Podiatry**, Ana Urukalo, D.P.M.
- **Rheumatology**, Kevin Osgood, M.D.
- Lab and Infusion Services

We offer same-day and next-day appointments in Family Practice, Pediatrics and Dermatology and accept most insurances.

**Call 512-681-5900 to
make an appointment or
for more information.**

Ask us about Flu Shots and
how to prepare for Cedar Fever!



**The Austin Diagnostic Clinic
Steiner Ranch**

5145 N. RM 620, Bldg. I

512-681-5900 • ADCClinic.com

My Health, My Doctor, My ADC

Around Lakeway

BE HEALTHY, LAKE TRAVIS!

Be Healthy is excited to continually develop our educational model around the three pillars of health: physical, nutritional and emotional.

Emotional health is of equal importance when it comes to achieving overall 'healthy living.' Studies have shown that physical and emotional health are interconnected with each other. People who find themselves fighting against depression will often be at higher risks for physical health issues such as obesity, hypertension, and heart disease. There are studies that have found a connection between mental illness and turning to alcohol and other substances for coping. Substance abuse as a coping strategy directly impacts physical health. Over time, poor mental health can lead to poor physical health and poor physical health can in turn lead to even poorer mental health. People who are aware of their mental health and focus on caring for themselves mentally will often see improvement in their physical well-being as well as their relational

well-being. Relational health is a vital component in mental health. If people are engaged in relationships that are causing them stress, their mental well-being is likely to struggle. Family support is found to be very helpful and can be a catalyst that leads to becoming mentally healthy. When families foster resilience, they are able to cope with challenges that negatively impact their mental, emotional, and relational health. As families and individuals focus on mental health, they will find that it will positively impact other areas of their lives and allow them to become healthier overall.

Be Healthy has recently launched the I AM Be Healthy campaign. We have a question for everyone to start thinking about; what does being healthy mean to you? Be Healthy has learned that each individual has a unique perspective about what health is. Being healthy is different for every person. Please join us and explain what be healthy means to you by posting on our Facebook wall! We can't wait to see what everyone has to say!

www.facebook.com/BeHealthyLakeTravis

Looking for that dream vacation?

I specialize in:

- * **Individual cruise planning**
- * **Land resort vacations**
- * **Guided vacation tours**
- * **Group cruises (reunions, club trips, church groups, etc)**

Whether it's taking a cruise to Alaska, cruising the Caribbean, taking a European riverboat cruise or choosing all inclusive land resort, I can help you plan. You would be keeping your business local.



*"I am a **Lake Travis Chamber** member. I'd love to help you plan your next dream vacation."*

Tip of the Month

Shake off the winter blues with a warm Caribbean cruise.
Please contact me to discuss land or cruise vacations.

Lakeway, Texas
CRUISEONE
Dream Vacations *Start Here*
Paula Kaisner
Independent Vacation Specialist
512-607-6635 • pkaisner@cruiseone.com
www.kaisnercruises.com

**For a child has been born
for us...
a son given to us...
...authority rests upon
his shoulders, and he is
named...
Wonderful Counselor
Mighty God
Everlasting Father
Prince of Peace**



A blessed Christmas to you from
The Episcopal Church of the Cross
Worshipping Sunday,
December 7 & 21
For more information go to
www.ecclaketraavis.org

WILL YOU ALWAYS
BE THERE?

GUARANTEED.

YOU'LL KEEP ME SAFE?

AND FULFILLED?

CHECK.

AUTOMATICALLY.

BOY, AM I
A LUCKY TANK.

YOU'RE ON MY ROUTE.

 **SHARP**
PROPANE.
THINK ABOUT PROPANE. ONCE.

sharp propane.com
800-932-4315

Around Lakeway

Lake Travis Community Library Feedback Requested

Do you want the library to offer a 3D printer, more teen programs, or a delivery service for homebound residents? The Lake Travis Community Library has initiated an update of the long range Strategic Plan and is requesting community feedback. Surveys are available at the Lake Travis Community Library and via its website www.laketravislibrary.org. Surveys may also be mailed to interested individuals who call the library and request one.

All input is welcomed and encouraged to support the mission to provide free and open access for lifelong learning, inspiration, and enjoyment to all library patrons.

The long range planning process will be conducted during the remainder of 2014 with the intent to publish the approved Lake Travis Community Library Strategic Plan in early 2015. The Library looks forward to receiving input from our community in order to provide an effective and efficient path to achieving the library vision. Please let your voice be heard and help shape the direction of your library!

Why choose Primrose® for Pre-K and Kindergarten?

Just Ask a Mom.®

"As an educator, I know what my children need in order to be ready when they leave Primrose. My son, who attended Pre-K at Primrose, was more than ready for Kindergarten."

Augustus James' Mom, Primrose Parent

- Proprietary Balanced Learning® System
- Degreed lead teaching staff
- Assessment shows Primrose students perform at about twice the level of their peers

Educational Child Care for Infants through Private Kindergarten and After School



Primrose School of Bee Cave
3801 Juniper Trace, Austin, TX 78738
512.263.0388 | PrimroseBeeCave.com



©2014 Primrose School Franchising Company. All rights reserved.

ARTIST SPOTLIGHT

Emmy Coffey



The Lake Travis Community Library will showcase the acrylic paintings and photography of local artist Emmy Coffey during the month of December. Emmy was born in Rochester, New York and grew up in the Austin area. She currently attends Lake Travis High School and plans to graduate this spring. Emmy's future plans include attending college where she hopes to major in biology and eventually go on to medical school.

Coffey's artistic life is not just an exploration of personal landscapes, but physical ones as well. Emmy has been fortunate enough to take several exciting trips abroad with her aunt. An avid painter and photographer, she finds her creativity is especially enhanced by travel. Much of her work is inspired by pictures she's taken in Central American countries like Costa Rica, Guatemala, and Nicaragua.

In addition to her artistic achievements in painting and photography, Emmy is also a member of the Lake Travis Cavalier Band, where she performs on the cymbal line.

Coffey will be available for questions and a discussion of her work at a reception on Sunday, December 7th from 2-3:30 p.m. Everyone is invited to visit the library during the month of December to view the exceptional work of this young local artist.



Green Santa Rides Again!

Spread the joy of Christmas to families in need. Please donate a new, unwrapped gift for a Lake Travis child. Registered children range in age from infant to 17 and are living at or below the poverty line. Suggested gift ideas include dolls, cars/trucks, blocks/legos, puzzles/games, balls, sports equipment, toddler toys, art/craft supply kits and gift cards or gift certificates to local businesses. Share the true spirit of Christmas giving with your neighbors! Green Santa collection deadline is Friday, December 12th. Gifts can be dropped off at LTISD elementary and middle school campuses, the Lake Travis Community Library, Bee Cave Chick-Fil-A, World of Tennis, Prosperity Bank, Strandz Salon, Moreland Properties, Don Rucker Tire & Wheel, Bee Cave Family Chiropractic, Kuper Sotheby's, Luxe Salon and Elite Wellness. Visit www.ltlov.org for additional information.

Around Lakeway

Feast on Live Music at Lakeway's Brown Bag Concert Series

Mark your calendar to shake off the chills at the Winter 2015 Brown Bag Lunch Concert Series.

The City of Lakeway's Arts Committee hosts the annual series of free lunchtime concerts in January and February to help residents escape their winter doldrums from noon-1 p.m. Thursdays at Lakeway Activity Center, 105 Cross Creek.

THE 2015 SCHEDULE IS:

- Jan. 8 - Slim Richey & The Jitterbug Vipers, a rousing band voted Best in Austin;
- Jan. 15 - Robert "Beto" Skiles Quartet featuring vocalist Shawnda Birch;
- Jan. 22 - Music of the Theatre with Southwestern University professor Rick Roemer and his students;
- Jan. 29 - Matt Wilson, a rockin' pianist and vocalist;
- Feb. 5 - Judith Miller Band, a popular Austin Club band;
- Feb. 12 - Albert and Gage, Texas music spiced with French lyrics;
- Feb 19 - The Second Line Jazz Band, a Mardi Gras celebration; and,
- Feb. 26 - Red Young Quartet featuring vocalist Silvie Rider, a first-class cabaret act.

"Pack a lunch and enjoy some excellent entertainment," said Fred Newton, Lakeway Arts Committee chairman.

For information, call the Activity Center at 512-261-1010.

ALL THINGS WILD



All Things Wild Rehabilitation (ATW) was started in 2012 to help sick, injured, and orphaned wild animals and to provide sanctuary for all wild, domestic, and barnyard animals in need. The organization, which will serve the entire Central Texas area, is based in Lakeway where the volunteer members plan to acquire land and build a rehabilitation center. The center will not only provide medical care and sanctuary for animals in need but also serve as an education facility to teach adults and children about wild animals.

To help raise money to build the rehabilitation center, the organization is selling handmade durable wooden houses for birds, owls, squirrels, bats, and butterflies, as well as squirrel feeders. Other items for sale include homemade suet for the winter birds, suet feeders, and handmade hobo bags from animal print fabrics and more. All items are made and provided by talented volunteer members.

To view pictures and dimensions of the houses and to purchase, please visit the ATW web site at <http://allthingswildrehab.org> and click on the link on the home page that says HOLIDAY SALE. These items will make wonderful gifts for yourself and your loved ones during the holidays. Individuals without Internet access can call the ATW hotline at 512-897-0806. Items purchased locally will be delivered by one of the volunteers. If items need to be shipped, the shipping cost will be discussed with the purchaser.

ATW is a 501(c)(3) nonprofit charity. Donations for which no goods or services are received in exchange are tax deductible as allowed by law.

Make a *colorful* impact.

Call today to reserve this space.



PEEL, INC.
community newsletters

512-263-9181



Lakeway Hills Solos Activities DECEMBER 2014:

DEC 8: Games Mah Jong 2:00–5:00p @ LAC then EAT afterward TBD where. NO carpool. Call Mary Ann Griesman

DEC 10: Lunch Bunch Noble Pig, 12233 620 N #105 (in spot formerly Vivo's) 512.382.6248. Carpool LAC 11:30am. \$2 gas. Call Maxine Beeskow

THANK YOU to our 2014 Board (Maxine Beeskow, Priscilla Bangs, Kay Muessig, Sandra Blakeway, Ram Matta, Linda Wiles, Alice Paez, Yvonne Connell (and me, Jacquie Banks) and to each of you who have helped plan our 2014 activities: Anita Fisher, Jo Kirk, Pam Murray, Phyllis Ligon, Mary Ann Griesman, Marie Rush. And a BIG THANK YOU to our Solos members who participate in our activities. Y'all really make it happen!

DEC 11: Christmas Social at The Hills of Lakeway Country Club. It was a delightful affair last year! \$25 checks payable to Lakeway/Hills Solos mailed to Sandy Blakeway, 3390 S El Dorado by Mon Nov 24th. Doors open 5:30 Social Hour; dinner 6:30. Our Solos funds helped subsidize to keep ticket cost to \$25. RSVP NOW!

DEC 12: eat first and then Games Bridge & Dominoes @ LAC 7pm. NO carpool. Eat at Pao's (near Chair King & Tuesday Mornings). 5:15pm. Call Jo Kirk or Eat at Hill Country Pasta, 3519 620 N 5:00pm. Please Call Phyllis Ligon.

DEC 13: Rockbox Theater, 109 N Llano St, Fredericksburg 830.997.7625. Christmas musical comedy. Tickets \$35 + 10 gas. Carpool LAC 2:00 and get your ticket from Maxine. Eat after at the Bavarian Inn. Call Maxine Beeskow

DEC 13: 1-4pm A Tour of Christmas Open Houses at Arbolago (off Stewart Road from 620 South) is presented by Lakeway Associates of Seton with a "wine bar & craft bazaar". For reservations, send \$20 check payable to The Seton Fund, memo to "Lakeway Home Tour" and mail to Nancy Clayton, 110 Melody Street, Lakeway 78734. Or call Sharon Rogers 512.261.9704 for more info. Although this is not specifically a Solos' event as such, I know many of our members support Seton in more ways than one and would want to support, as well as enjoy, such a wonderful event. There are some really beautiful homes in this subdivision.

NOTE #1: Nov & Dec: Dining Out: none in Nov & Dec due to all of the other holiday events

NOTE #2: Activities 2015 will be by 4-person committee. Call Priscilla Bangs to volunteer 512.261.0038

NOTE #3: PLEASE open your email as important notes coming your way. 1) Ballots for 2015 Board & Chairs; 2015 Activities Survey (this is where you get to make suggestions); and our Christmas Social invitation.

2) We were able to keep the 2015 Solos dues at \$15. They are due by Feb 1 so you can pay early at the Jan Social or mail to Sandy Blakeway, 3390 S El Dorado. Membership at Lakeway Activity Center ("LAC") is highly recommended so we can continue the use of this wonderful local venue so please pay your 2015 dues of \$20 for Lakeway residents to them also. To pay by credit card call 512.261.1010.

SAVE-THIE-DATES:

BROWN BAG LUNCH @ LAC every Thurs Jan/Feb. Viewpoints Speaker Series 3rd Sun Jan-Mar

REMINDER: If any Solo needs a hug, card, call, or prayer call Caring Chair, Yvonne Connell

SEND US YOUR Event Pictures!!

Do you have a picture of an event that you would like to run in this newsletter? Send it to us and we will publish it in the next issue. Email the picture to lakeway@peelinc.com. Be sure to include the text that you would like to have as the caption. Pictures will appear in color online at www.PEELinc.com.



LIN ACUPUNCTURE CLINIC

NATURAL TREATMENTS FOR:

WEIGHT LOSS
PAIN MANAGEMENT
RESPIRATORY DISORDERS
WOMEN'S HEALTH
GASTROINTESTINAL DISORDERS
ALCOHOL / DRUG / SMOKING CESSATION
STRESS / FATIGUE / INSOMNIA / ANXIETY / DEPRESSION
BELL'S Palsy / LIMB WEAKNESS / PARALYSIS
DIABETES NEUROPATHY

INITIAL EVALUATION AND TREATMENT \$80, EACH FOLLOWING TREATMENT \$50

317 RANCH ROAD 620 SOUTH SUITE 100A • AUSTIN, TX 78734
512.596.8232 • LINHEALTHCARE@YAHOO.COM • WWW.LINACUPUNCTURE.COM

Sports News

LAKEWAY 9 HOLE LADIES GROUP LAKEWAY COUNTRY CLUB

October 1, 2014

Ace of the Month Kelly Villareal

1st place- Daniel, Rester, Reese Villareal 31
2nd place- Skinner, Foster, Massa, Bowman 67
3rd place Mills, Connelly, Matheny 69

October 8, 2014

First Flight

1st place- Pam Rhodes 32
2nd place- Karen Vaughan 38
3rd place- Deane Willis 38

Second Flight

1st place- Vivian Craft 35
2nd place- Nancy Wells 36
3rd place- Beverly Burmeier 39

Third Flight:

1st place- Carol Smith 38
2nd place- Robin Hargadon 39
3rd place- Nancy Gregor 39

50 and under: Pam Rhodes- 49

55 and under: Nancy Wells-53 Karen Ann Vaughan-54 , Dottie Fedro-53,
Holly McElroy- 53, Vivian Craft-54, Kelly Villareal-55

Chip ins: Ann Smith #16 Gail Bowman #18

Low Putts: Deane Willis 14 Nancy Wells 14

October 15, 2014

First Flight:

1st place- Sandy Walsh- 27
2nd place- Dottie Fedro - 26
3rd place- Pam Rhodes- 24

Second Flight:

1st place- Kelly Villareal- 31
2nd place- Diana Hall- 28
3rd place- Melissa Rice- 27

Third Flight:

1st place- Gail Bowman- 29
2nd place- Sandy Norton - 17
3rd place- Margaret Myers- 17

50 and under: Dottie Fedro- 50

55 and Under: Mary Land- 51, Melissa Rice- 55, Kelly Villareal- 55, Sandy Walsh- 52

Low Putts: Melissa Rice 13

October 22, 2014

1st place- Dottie Fedro, Betty Colovas, Shirley Hampton, Pam St.Clair- 33
2nd place- Gail Bowman, Rita Rowe, Billye Lynn Ratliff, Jackie Anderson- 36
3rd place- Vivian Craft, Gaye Wormington, Beverly Burmeier, Kay Stratton-40

Closest to the Hole, - Pam St Clair

Closest to the line- Nancy Wagner

October 29, 2014

First Place: B. Reid, B. Monzingo, M. Rice, G. Bowman- 61

Second Place: P. Lasswell, C. Novak, P. Long, Johnson- 68

Third Place: J. Campbell, H. McElroy, M. Barnes, S. Norton- 68

Chips Ins: Wendy Geartner, Carol Smith, Joyce Johnson

Closest to the Pin: 9 holers- Billye Lynn Ratliff

18 holers - Rita Hietpas

LAKEWAY 18 HOLE LADIES GROUP LAKEWAY COUNTRY CLUB

September 3rd – Ace of the Month, Yaupon

Ace of the Month, Karina Williams, Score 64

1st Flight:

1st Net: Lynda Meyer, 65 2nd Net: Lesa Wilson, 67

2nd Flight:

1st Net: Diane Tomlinson, 75 2nd Net: Rita Hietpas, 77

3rd Flight:

1st Net: Tere McKenna, 74 2nd Net: Karla Castriotta, 76

Low Putts: Lesa Wilson - 30

Chip Ins: Tere McKenna #4, Gerrie Richardson #9, Lesa Wilson #14

Birdies: Paula Crawley #3; Tere McKenna #4; Lesa Wilson #12

September 10th – Best Nine, Live Oak

1st Flight:

1st Net: Dianne Morris, 33 2nd Net: Sandee Phillips, 34

2nd Flight:

1st Net: Sandy Nees, 34 2nd Net: Tere McKenna, 37

3rd Flight:

1st Net: Rose Ramon-Barrs, 32 2nd Net: Wendy Gaertner, 33

Low Putts: Sandy Nees and Karla Castriotta - 27

Chip Ins: Lynda Meyer #2, Diane Tomlinson #7; Karla Castriotta #13; Paula
Crawley #18

Birdies: Lesa Wilson #2; Kathy Skinner #6; Sandee Phillips #7;

Karina Williams #13

September 17th – O-N-E-S, Yaupon

1st Flight:

1st Net: Lynda Meyer, 35 2nd Net: Kathy Skinner, 36

2nd Flight:

1st Net: Sue Combs, 43 2nd Net: Cathy Shoemaker, 43

3rd Flight:

1st Net: Pat Huskinson, 40 2nd Net: Lynne Walder, 44

Low Putts: Lynda Meyer and Mary Jo Sheehan - 29

Chip Ins: none

Birdies: Lesa Wilson #3; Sandy Nees #3; Kathy Skinner #7 & #14; Lynda Meyer
#16

September 24th – Stableford 3-person teams

Judy Donohue, Beverly Reid, Sarah Hohner, 104

Carol Novak, Betsy Frost, Lesa Wilson, 98

Low Putts: Lesa Wilson – 28

Chip Ins: Linda Woodhall #1; Judy Donohue #2;

Diane Tomlinson #3; Karina Williams #8;

Linda Woodhall #13; Karina Williams #17

Birdies: Janie Pageau #3; Diane Tomlinson #3; Lesa Wilson #3;

Sandy Nees #3; Lesa Wilson #11; Beverly Reid #12;

Sarah Hohner #12; Linda Woodhall #13; Lesa Wilson #15

DECEMBER 2014 PLAY SCHEDULE

LLGA 9 HOLERS

December 3 9:00 am Ace of the Month Yaupon Course

December 10 9:00 am Christmas Luncheon

December 17 9:00 am Individual Play Live Oak Course

For further information contact Nancy Wells at 512-263-9110 or
jonnann79@gmail.com



CROSSFIT HIVE



**kick start
2015**

**JOIN THE HIVE
IN DECEMBER AND RECEIVE
ONE MONTH FREE**

EXP. 12/31/2014

SEE OUR CLASS
SCHEDULE ON OUR
FACEBOOK PAGE

512.296.0141 • 5004 BEE CREEK ROAD • BEE CAVE, TEXAS 78699

 [FACEBOOK.COM/CROSSFITHIVE](https://www.facebook.com/crossfithive)

TexARTS Announces 2014 Holiday Shows and Winter Break Camps

Dec. 6 - 7, 2014 | The Nutcracker

TexARTS Youth Ballet Theatre presents the magical story of The Nutcracker. Bring the whole family and be swept off your feet as 44 young dancers bring this glorious holiday favorite to life. Join Clara at a festive party and watch in delight as the Sugar Plum Fairy hosts a dazzling array of dances in the enchanting Land of Sweets. Special guest stars include Lakeway community members Chris Abramson as "Drosselmeier" and Truc Chi Tieu. Directed and choreographed by Darren Gibson. December 6 at 2pm and 6pm, December 7 at 2pm. Cost: \$15.00. Tickets available at tex-arts.org or by calling the box office at 512-852-9079 x101. Location: St. Michael's Academy - Gloria Delgado Theatre, 3000 Barton Creek Blvd. Austin, TX 78735

Dec. 13 - 14, 2014 | Holiday Extravaganza

The TexARTS Broadway Company stars in this holiday revue that features irresistible Rockette-style numbers, your favorite holiday hits, and a special appearance by Santa Claus! This perfectly wonderful family favorite is sure to put the SPARKLE in your holidays! Directed and choreographed by Darren Gibson. December 13 - 14 at 2pm and 6pm. at the Kam & James Morris Theatre at TexARTS. (2300 Lohman's Spur, Suite #160, Lakeway, TX). Cost: \$15.00. Tickets available at tex-arts.org or by calling the box office at 512-852-9079 x101

Dec. 19, 2014 | A Cool Yule Cabaret - TexARTS Cabaret Series

This swinging TexARTS revue will make your holidays merry and bright as Jane Dean, Natalia Luna, Jarret Mallon and Rudy Roberson deliver a wonderland of rousing holiday classics. This joyous evening of music will warm your heart with the songs of Andy Williams, Nat King Cole, Peggy Lee and more! A Cool Yule will remind you how special the holidays - and TexARTS - really are. December 19 at 7:30 pm. at the Kam & James Morris Theatre at TexARTS. (2300 Lohman's Spur, Suite #160, Lakeway, TX). For all ages. Tickets: \$25 - \$35. www.tex-arts.org. Box Office: 512-852-9079 x101

Dec. 29 - 31 & Jan. 2, 2015 | Winter Break Camp | Best of "Frozen" | Monday, - Wednesday, & Friday (No Camp on Thursday, New Year's Day)

Learn dances, songs and scenes from this Disney blockbuster! You'll get a fantastic introduction to musical theatre by playing the snow queen, Elsa, her sister, Anna, and the hilarious talking snowman, Olaf. The camp will explore the hit songs, "Let it Go," "In Summer" and "Do You Want To Build A Snowman?" For ages 5 - 14. Enroll today at www.tex-arts.org or by calling 512-852-9079 x104. TexARTS is a nonprofit performing and visual arts organization located at 2300 Lohman's Spur, Austin, TX 78734.

Price \$280 - Full Day from 9am-5pm

Price \$200 - Half Day from 9am-1pm

Winter Averaging Began November 17

WCID 17 begins the winter averaging cycle that determines wastewater charges for customers for the following service year. This year's winter averaging cycle begins Nov. 17, 2014 and ends Feb. 17, 2015. WCID 17 calculates wastewater costs based on the average amount of water used during three winter billing cycles. These three billing periods occur between mid-November and mid-February, when less outside water is being used, making it a good measure of the water volume sent to the wastewater system. Minimizing and conserving your water usage during these months could result in a lower wastewater charge every month next year! This water evaluation will affect your bill beginning Oct., 1, 2015.

Some ways to save water in the winter and help lower your wastewater average are:

- Turn off your irrigation system for the fall and winter months;
- Fix all leaky faucets and toilets;
- Take shorter showers, shallower baths;
- Run your dishwasher and washing machine only with a full load;
- When buying new appliances that are water-using, look for the WaterSense® label; and
- Visit www.wcid17.org/ConservationTips.htm for more ways to save water.

PROTECT FROM FREEZING WEATHER

- Wrap all exposed pipes located outside or in unheated areas of the home.
- Remove garden hoses from outside faucets.
- Cover vents around the foundation of your home.
- Know where your property owner's cut-off valve is located and how to use it. The valve is located adjacent to the water meter box under a 6" metal lid.

IN SUB-FREEZING WEATHER

- Drip outside faucets 24 hours a day (5 drops per minute).
- This is not necessary unless temperatures are expected to be 28 degrees or below for at least 4 hours. (Be sure to turn off the faucets after the threat of freezing weather.)
- Open cabinet doors under sinks adjacent to outside walls.
- In unheated garages, shut off water to washing machines. Water softeners should be drained and protected from freezing temperatures.
- In sustained sub-freezing weather, let water drip slowly from inside faucets.
- Take extra precautions to protect pipes that have frozen in the past.

IF YOU ARE NOT GOING TO BE AT HOME

- Shut water off at the property owner's cut-off valve.
- Drain all outside water faucets if your house will be unoccupied for several days (leave outside faucets open).
- Or, leave home heating system on at a low setting.
- Open cabinet doors under sinks adjacent to outside walls.
- Renters and tenants may be responsible for personal property damage caused by broken water pipes during severe weather conditions. Residents should contact property management/landlord or maintenance personnel to locate property owner's cut-off valve and find ways to avoid pipe breakage during a freeze.
- WCID 17 encourages all residents to turn off and drain outside irrigation systems during the winter months to help conserve water. However, businesses that continue to operate landscape irrigation systems are asked to shut their systems off in order to prevent possible freezing of pedestrian areas and damage caused by freezing conditions.



ALLSTARBURGER

CATERS TO OFFICES & BUSINESSES FOR LUNCH!

Birthday parties, pool parties, etc.

Interested in ASB catering for you?

\$50 minimum plus delivery fee
limited delivery area

Call Shane at 512-263-7300



News You Can Use

CHAMBER OF COMMERCE CHECK PRESENTATION TO THE LAKE TRAVIS COMMUNITY LIBRARY

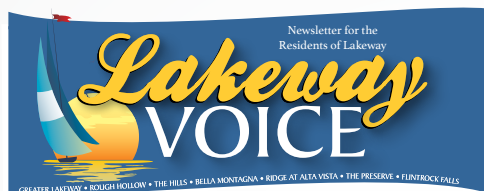
On November 3rd, Lake Travis Chamber of Commerce President, Laura Mitchell, presented Morgan McMillian, Lake Travis Community Library Director, a check for \$4,574.62 from the "Dancing with the Stars" gala.

The former Library event is now coordinated by the Chamber while the Library remains a benefactor. The fundraiser supports the missions of the Chamber to promote economic growth and the Library to promote literacy in the Lake Travis area.

For more information about the Lake Travis Chamber of Commerce and Lake Travis Community Library, visit LakeTravisChamber.com and LakeTravisLibrary.org.



From left to right: Morgan McMillian, P.K. Chatterjee (Library Board member) and Laura Mitchell



Your Community at Your Fingertips



Download the Peel, Inc. iPhone App



www.peelinc.com

512.263.9181





Take Care of Texas by Managing Your Leaves

As autumn brings cooler temperatures, it also signals the arrival of another seasonal display - falling leaves! While Take Care of Texas encourages you to plant shade trees to help lower your utility bills in the summer, these deciduous trees lose their leaves in the fall. Instead of raking and bagging them, where they will head to a landfill, put them back into your lawns and gardens as a valuable source of mulch and fertilizer. Leaves contain 50 to 80 percent of the nutrients a plant extracts from the soil and air during the season. Grass clippings, leaves, and other yard debris make up 20 percent of the trash sent to landfills each year. It costs Texans over \$250 million a year to collect and dispose of this waste. There are four basic ways to manage leaves and use them in landscaping:

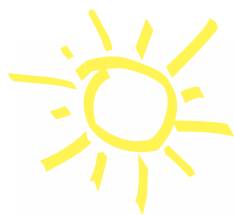
Mowing: a light covering of leaves can be mowed, simply leaving the shredded leaves in place on the lawn. This technique is most effective when a mulching mower is used.

Mulching: a lawn mower with a bagging attachment provides a fast and easy way to shred and collect the leaves. Apply a three to four inch layer of shredded leaves around the base of trees and shrubs. A two to three inch mulch of shredded leaves is ideal for flowerbeds. For vegetable gardens, a thick layer of leaves placed between the rows functions as a mulch and an all-weather walkway that will allow you to work in your garden during wet periods.

Composting: in addition to leaves, other yard wastes such as grass clippings, pine needles, weeds, and small prunings can be composted. Compost can serve as a soil conditioner that nourishes your yard and reduces the need for outdoor watering up to 60 percent.

Soil improvement: leaves may be collected and worked directly into garden and flowerbed soils. A six to eight inch layer of leaves tilled into a heavy, clay soil will improve aeration and drainage. The same amount tilled into a light, sandy soil, will improve water and nutrient holding capacity.

The Children's Center Of Austin



Why we are Austin's best kept secret...

- Low Teacher/Student ratios
- Compassionate, Professional Teachers Committed to Your Child's Success!
- An Educational, Theme-Based Curriculum
- New Developmental-Based Infant Curriculum
- Special Events & Field Trips
- Art Studio, Computer Lab, Library & Gymnasium

Convenient Enrichment Activities:

- Spanish • Little Wing • Martial Arts
- Gym Station • Dance Adventures

CCOA-STEINER RANCH
4308 N. Quinlan Park Rd.
Suite 100
Austin, TX 78732
512.266.6130

CCOA-JESTER
6507 Jester Boulevard
Building 2
Austin, TX 78750
512.795.8300

CCOA-WESTLAKE
8100 Bee Caves Rd
Austin, TX 78746
512.329.6633

Currently Accepting Student Enrollment



childrenscenterofaustin.com

Business Section

The Lakeway Voice is a private publication published by Peel, Inc. It is not sanctioned by any homeowners association or organization, nor is it subject to the approval of any homeowners association or organization, nor is it intended, nor implied to replace any publication that may be published by or on behalf of any homeowners association or organization. At no time will any source be allowed to use the Lakeway Voice contents, or loan said contents, to others in anyway, shape or form, nor in any media, website, print, film, e-mail, electrostatic copy, fax, or etc. for the purpose of solicitation, commercial use, or any use for profit, political campaigns, or other self amplification, under penalty of law without written or expressed permission from Peel, Inc. The information in the newsletter is exclusively for the private use of Peel, Inc.

DISCLAIMER: Articles and ads in this newsletter express the opinions of their authors and do not necessarily reflect the opinions of Peel, Inc. or its employees. Peel, Inc. is not responsible for the accuracy of any facts stated in articles submitted by others. The publisher also assumes no responsibility for the advertising content with this publication. All warranties and representations made in the advertising content are solely that of the advertiser and any such claims regarding its content should be taken up with the advertiser.

- * The publisher assumes no liability with regard to its advertisers for misprints or failure to place advertising in this publication except for the actual cost of such advertising.
- * Although every effort is taken to avoid mistakes and/or misprints, the publisher assumes no responsibility for any errors of information or typographical mistakes, except as limited to the cost of advertising as stated above or in the case of misinformation, a printed retraction/correction.
- * Under no circumstances shall the publisher be held liable for incidental or consequential damages, inconvenience, loss of business or services, or any other liabilities from failure to publish, or from failure to publish in a timely manner, except as limited to liabilities stated above.

NOT AVAILABLE
ONLINE



Dr. RJ Jackson
Board-Certified Specialist in
Orthodontics & Dentofacial
Orthopedics

**WHO SAYS HAVING
BRACES IS A BUMMER?**
SHOW YOUR PERSONALITY AND CUSTOMIZE
YOUR BRACES WITH DR. JACKSON



**SAME DAY BRACES
FREE CONSULTATION**

512-537-1636 | www.rjorthodontics.com
6911 North FM 620 | Suite A-200 | Austin

This will be your LAST diet!

Based on reproducible science -

Women lose 3-5 pounds of FAT per week • Men lose 4-7 pounds of FAT per week

• No Drugs • No Gimmicks • 100% Natural • Medically Monitored • Lose ONLY Fat

Our Team



Dr. Hicks



Michele



Amy



Dawn



Chandler



Moay



Lori



Julie



Timi



Caroline

Ideal Weight Loss Medical Centers

Ideal Weight Loss Medical Clinics
(Austin/NW Austin)
4180 Duval Rd.
Building A, Suite 202
Austin, TX 78759
(512) 577-6181
idealweightlossmedicalclinics.com

Ideal Weight Loss Medical Clinics
(Westlake/Galleria)
12912 Hill Country Boulevard
Building F, Suite 238
Austin, TX 78738
(512) 577-6181
idealweightloss.com

NUBody Weight Loss Lounge
(Killeen)
2511 Trimmer Rd.
Killeen, TX 76547
(512) 577-6181
nubodyweightlosslounge.com
www.locations.org

A New You Weight Loss
(Round Rock)
1250 S. AW Grimes Boulevard
Round Rock, Texas 78664
512-310-7865
www.ANewYouRoundRock.com

Round Rock Institute for Weight Loss
(Round Rock)
301 Seton Parkway
Suite 400
Round Rock, TX 78665
(512) 577-6181
roundrockinstituteforweightloss.com



PEEL, INC.

308 Meadowlark St. South
Lakeway, TX 78734

PRSRT STD
U.S. POSTAGE
PAID
PEEL, INC.

LWY

Just Listed 8816 Fescue Ln

Fabulous Highland custom in Rocky Creek! One story living with three bedrooms and study down, bonus theater/game room PLUS office niche at second level! Meticulously cared for. Tons of character, hardwood flooring, granite counters, custom window treatments, warm contemporary master bath, lots of storage space! South facing, HUGE covered patio, outdoor built-in kitchen/grill, backyard hill country views atop stone fencing. Community pool & playground, miles of hike and bike trails, less than 10 min. to Galleria. Lake Travis Schools!

\$449,000 MLS# 9526263



*Committed to making your real estate experience
unforgettably awesome since 2004!*

Nicole Peel Broker/Realtor® Lic.# 0527640

PEEL REALTY 512.740.2300

www.peelrealtyaustin.com