

NORMANDY FOREST



April 2015

Official Publication of the Normandy Forest Homeowners Association

Volume 4, Issue 4

ANNUAL COMMUNITY GARAGE SALE

APRIL 18th • 8am to 2pm

APRIL 18th
8am to 2pm
CLEAN OUT YOUR
HOME & GARAGE
GET CASH FOR
UNWANTED
ITEMS



NORMANDY FOREST

NORMANDY FOREST COMMITTEES

THE ARCHITECTURAL COMMITTEE

Danny Rodriguez 281-528-6640
Mark Lawson 281-651-8034

The Association has an active Architectural Control Committee that approves or denies all construction and any improvements. You may request an ACC form by contacting Chaparral Management 281-537-0957 or the association website. Please keep in mind that the Association has thirty days (30 days) to approve or disapprove any ACC and verbal approvals or disapprovals are not given.

SECURITY COMMITTEE

In the event of an emergency please call "911" or for Precinct 4 please program your cell phone with the number below.

Precinct 4 281-376-3472
Paul Diaz 281-651-8606

ACTIVITIES COMMITTEE

Michelle Tsatsaronis michelletsatsaronis@gmail.com
..... 281-907-2276

POOL MAINTENANCE & LIFEGUARDS

Jeffery King 281-655-8675

CLUBHOUSE RENTALS

Chaparral Management / Valerie Overbeck 281-537-0957

MAINTENANCE COMMITTEE

John Nemec 281-651-8606 | jnemec@normandyforest.org
Paul Diaz 281-687-2045

POOL TAG COMMITTEE

George Tsatsaronis 281-323-9900

BLOCK CAPTAIN COORDINATOR

Karen Zuckero 713-504-6469

IMPORTANT CONTACTS

BOARD OF DIRECTORS

Paul Diaz | President 281-687-2045
John Nemec | Vice President 281-651-8606
Judy Doll | Secretary 281-528-9110
George Tsatsaronis | Treasurer 281-323-9900
Tim Benjamin | Director at Large 281-704-3570

BALLPARK RESERVATIONS

John Nemec | Coordinator 281-651-8606

COMMUNITY SERVICES

Gas | Centerpoint Energy 713-659-2111
Electric | Reliant Energy 713-207-7777
Phone | AT&T www.att.com
Sewer | Harris County MUD #28 281-353-9809
Trash | Republic Waste 281-446-2030
Fire Department | Spring VFD 281-355-1266
County Commissioner | Jack Cagle 713-755-6444

MANAGEMENT COMPANY

Chaparral Management Company, AAMC
6630 Cypresswood Suite 100 | Spring, Texas 77379
281-537-0957 phone | 281-537-0312 fax
Valerie Overbeck | Association Manager
voverbeck@chaparralmanagement.com

OFFICE HOURS

9am to 5pm | closed for lunch 12:30 to 1:15 pm

NEWSLETTER INFO

EDITOR

Judy Doll txcardlady@sbcglobal.net

PUBLISHER

Peel, Inc. www.PEELinc.com, 512-263-9181
Advertising advertising@PEELinc.com

ADVERTISING

Please support the advertisers that make the Normandy Forest Newsletter possible. If you would like to support the newsletter by advertising, please contact our sales office at 512-263-9181 or advertising@PEELinc.com. The advertising deadline is the 8th of the month prior to the issue.





GOING ON VACATION?

Precinct 4 Constable's office offers free protection for your home. Just go to: HYPERLINK "http://www.cd4.hctx.net/online_forms.php?formID=vacation" and fill in the form. A constable will walk around the perimeter of your house once a day and check all doors and windows. This is a free service!

TRAVEL BARGAINS

Outsmart the airline reservation system. Try shopping for each passenger ticket separately. When you purchase two or more tickets in a single transaction, most airlines require seats be sold at the same price. If shopping for two people, and there is only one seat left at the \$150 promotional price, you will pay a higher amount for each ticket unless you do two transactions.

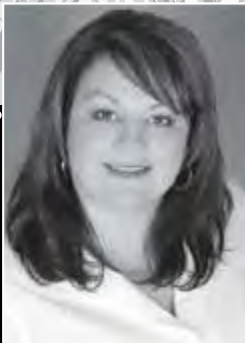
Price shop hotels online, but then call the front desk. You may get a better deal.



If you are planning on selling in 2015, NOW is the time to prepare your home for the spring market.

Put my real estate experience to work for you, ensuring a successful sale!

Get expert advice on repairs,
staging and all other details
to get your home sold for **more**.
Your **profit** is my **priority**.



Sally Rodriguez
REALTOR®, CNMS, CNBS, CNE

832-788-4186
onesalrod@aol.com
<http://SallyRodriguez.GaryGreene.com>

**Better
Homes
and Gardens.**
REAL ESTATE

**GARY
GREENE**

©2015 Better Homes and Gardens Real Estate LLC. Better Homes and Gardens® is a registered trademark of Meredith Corporation licensed to Better Homes and Gardens Real Estate LLC. Equal Opportunity Company. Equal Housing Opportunity. Each Franchise is Independently Owned and Operated. If your property is currently listed with a real estate broker, please disregard. It is not our intention to solicit the offerings of other real estate brokers.

GET MORE FROM YOUR GARDEN

Raspberries require little care to grow, but can cost a lot at the store. You can even freeze them.

Mixed salad greens, like baby lettuce and arugula are tough and quick growing, even after cutting.

If you cut them correctly they will grow again. Start at one end of your garden and cut plants about an inch from the ground. The plant could grow back 3-4 times in a season.

Flat gardening was popular years ago, but now raised beds are much better. They prevent weeds from taking over, let water drain more efficiently and plants thrive in aerated soil.

A very common error in gardening is over watering and drowning plants. If it rains at least one inch per week, you can probably skip heavy watering. Purchase a rain gauge (under \$10) at garden stores to keep track of how much or how little water your plant is getting and add or subtract from there.

A promotional advertisement for Texas Direct Auto. It features a golden retriever puppy wearing a grey baseball cap with a Texas flag logo. The puppy is sitting next to a white plate filled with several hot dogs. The word "Hot Dog" is written in large, stylized, orange-outlined letters. In the bottom left corner is a cartoon character of a blue and yellow bird-like creature. The bottom right corner contains the text "SELL US YOUR CAR, SKEETERS FANS!" and "TEXASDIRECTAUTO.COM".

Hot Dog

SELL US YOUR CAR, SKEETERS FANS!
TEXASDIRECTAUTO.COM

SKATE PARK IN SPRING

Grab your skates/skateboard and a helmet and head to the Spring Skate Park. The park was funded through a tax increment reinvestment zone as part of the 10 acre Spring Recreational Area. The park can accommodate up to 1,000 people at a time and many come from as far away as Australia and Chili. There is more than 75,000 square feet of skate surface and includes a competition-scale bowl with a full pipe and a 12 foot vertical ramp, a 10 foot bowl, banked walls and speed hips. Dylan Park, for special needs children, is wheelchair accessible and provides a skating area for wheelchairs and games. The park is located on Kuykendahl near Spears Road. Just Google for directions.



From design to
print to mail,
Quality Printing
can help you with
all of your
printing needs!



Quality
PRINTING COMPANY

Call today for more info

512.263.9181

Or visit our website at:
www.QualityPrintingofAustin.com

DO YOU LIKE TO WRITE?

If you are a student interested in submitting articles about your school, and live in Normandy Forest, contact: txcardlady@sbcglobal.net.

We are interested in activities, plays, concerts, short stories, poems, etc. Just remember, newsletters are written one month in advance of publication.



Normandy Forest has a Face Book Page! Check out photos from National Night Out and other events of the year. Look us up under Normandy Forest Community and join in on the conversation!

**NOT
AVAILABLE
ONLINE**

ADVERTISE YOUR BUSINESS TO YOUR NEIGHBORS

Support Your Community Newsletter



PEEL, INC.
community newsletters

Jackie Owens
Sales Representative
832-482-8132
jowens@PEELinc.com

www.PEELinc.com 1-888-687-6444

SEND US YOUR *Event Pictures!!*

Do you have a picture of an event that you would like to run in this newsletter? Send it to us and we will publish it in the next issue. Email the picture to ***txcardlady@sbcglobal.net*** Be sure to include the text that you would like to have as the caption. Pictures will appear in color online at *www.PEELinc.com*.



At no time will any source be allowed to use the Normandy Forest's contents, or loan said contents, to others in anyway, shape or form, nor in any media, website, print, film, e-mail, electrostatic copy, fax, or etc. for the purpose of solicitation, commercial use, or any use for profit, political campaigns, or other self amplification, under penalty of law without written or expressed permission from Peel, Inc. The information in the Normandy Forest is exclusively for the private use of the Normandy Forest HOA and Peel, Inc.

DISCLAIMER: Articles and ads in this newsletter express the opinions of their authors and do not necessarily reflect the opinions of Peel, Inc. or its employees. Peel, Inc. is not responsible for the accuracy of any facts stated in articles submitted by others. The publisher also assumes no responsibility for the advertising content with this publication. All warranties and representations made in the advertising content are solely that of the advertiser and any such claims regarding its content should be taken up with the advertiser.

* The publisher assumes no liability with regard to its advertisers for misprints or failure to place advertising in this publication except for the actual cost of such advertising.

* Although every effort is taken to avoid mistakes and/or misprints, the publisher assumes no responsibility for any errors of information or typographical mistakes, except as limited to the cost of advertising as stated above or in the case of misinformation, a printed retraction/correction.

* Under no circumstances shall the publisher be held liable for incidental or consequential damages, inconvenience, loss of business or services, or any other liabilities from failure to publish, or from failure to publish in a timely manner, except as limited to liabilities stated above.

got news?

Submit your news at:
www.peelinc.com





PEEL, INC.

308 Meadowlark St. South
Lakeway, TX 78734

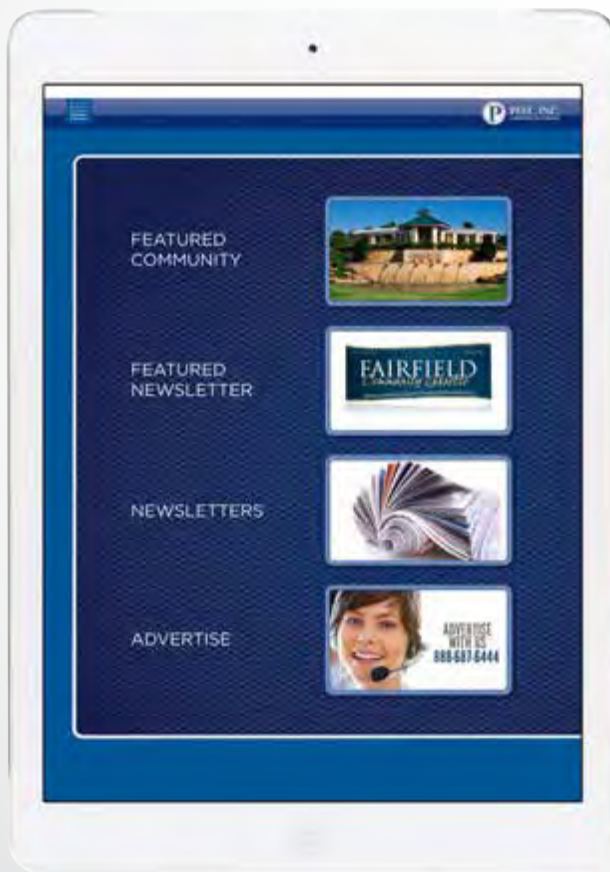
PRSR STD
U.S. POSTAGE
PAID
PEEL, INC.

NMF

Your Community at Your Fingertips



Download the Peel, Inc. App Available
for Your iPhone and iPad



www.peelinc.com
512.263.9181