

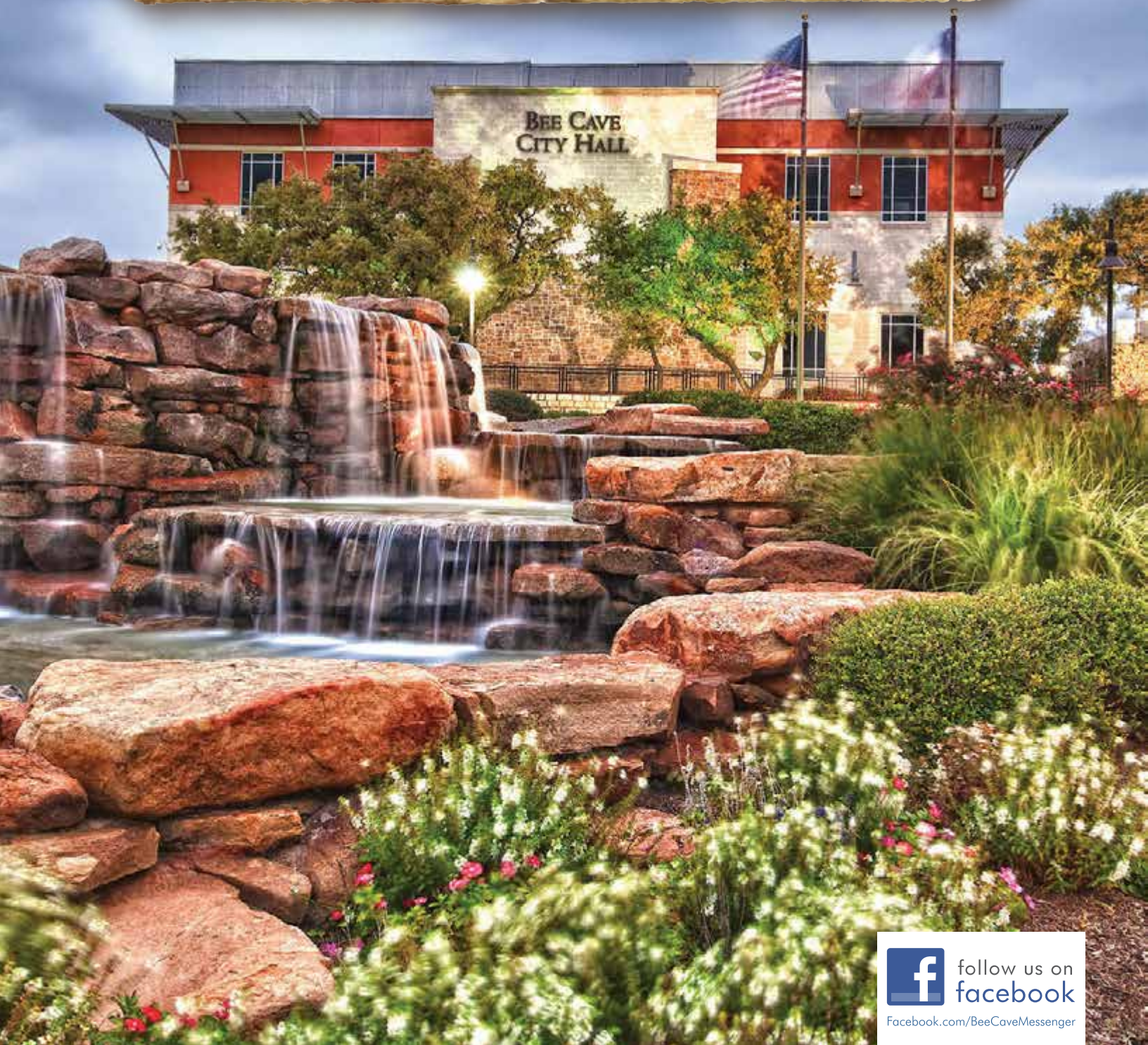


# BEE CAVE *Messenger*

VOLUME 6, ISSUE 9

SEPTEMBER 2015

NEWSLETTER FOR THE RESIDENTS OF THE BEE CAVE AREA



follow us on  
facebook

[Facebook.com/BeeCaveMessenger](https://www.facebook.com/BeeCaveMessenger)



Quality Designs.  
Exceptional Craftsmanship.  
Simple Luxury.

ANNOUNCING OUR  
NEW SINGLE FAMILY  
HOMES IN:

*Serene Hills*  
LUXURY LIVING IN THE HILLS

COMING FALL OF 2015  
CALL NOW FOR DETAILS



### Ash Creek Homes at Serene Hills

- 23 Single-Family Homes (starting at 2,500 sq. ft.)
- One and Two Story Floorplans with Varied Elevations
- 2 and 3 Car Garages
- Exceptional Floorplans with High End Finishes
- Spacious Homesites for Unlimited Outdoor Living
- Within Lakeway City Limits
- Quality Exterior Finishes with 100% Masonry
- Within the Coveted Lake Travis ISD:  
Lake Travis High School, Lake Travis Middle School,  
Serene Hills Elementary
- Community Hike and Bike Trail
- 5.5 Miles to the Hill Country Galleria and  
Downtown Bee Cave
- Close to Area Amenities & Outdoor Recreation
- Hill Country Views and Green Belt Lots

**AshCreekHomes.com**  
**512-328-2122**

*Find us in the Los Senderos subdivision off  
of Serene Hills Drive in Lakeway*



---

## ADVERTISING INFO

---

Please support the advertisers that make the Bee Cave Messenger possible. If you are interested in advertising, please contact our sales office at 512-263-9181 or [advertising@peelinc.com](mailto:advertising@peelinc.com). The advertising deadline is the 8th of the month prior to the issue.

---

## ARTICLE INFO

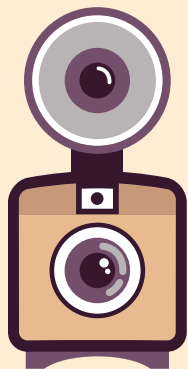
---

The Bee Cave Messenger is mailed monthly to all Bee Cave area residents. Residents, community groups, churches, etc. are welcome to include information about their organizations in the newsletter. Personal news for the Stork Report, Teenage Job Seekers, recipes, special celebrations, and birthday announcements are also welcome.

To submit an article for the Bee Cave Messenger please email it to [beecave@peelinc.com](mailto:beecave@peelinc.com). The deadline is the 15th of the month prior to the issue.

## COVER PHOTO

### Do you take amazing photos?



Do you take great photos? Would you like to see your photo published? We are looking for great cover photos for upcoming issues of the Bee Cave Messenger. Our deadline for submittals is always the 9th of the month prior to the issue. All photos should be submitted electronically by the deadline date in high resolution (300 dpi) to [beecave@peelinc.com](mailto:beecave@peelinc.com). Portrait (vertical) photos work best.

To view other photos submitted please visit [www.PEELinc.com/BeeCave](http://www.PEELinc.com/BeeCave), and

view any of the past newsletters.

By submitting your photo you agree to allow your photo to be published in future issues of the Bee Cave Messenger or other Peel, Inc. publications. Call 512-263-9181 to find out how to have your business featured on the cover of the Bee Cave Messenger.

---

## IMPORTANT NUMBERS

---

### EMERGENCY NUMBERS

EMERGENCY .....	911
Fire.....	911
Ambulance.....	911
Police Department .....	512-314-7590
Sheriff – Non-Emergency.....	512-974-0845
Travis County ESD No.6/Lake Travis Fire Rescue	
Administration Office.....	512-266-2533
Travis County Animal Control.....	512-972-6060

### SCHOOLS

Lake Travis ISD .....	512-533-6000
Lake Travis High School.....	512-533-6100
Lake Travis Middle School.....	512-533-6200
Lake Travis Elementary.....	512-533-6300
Hudson Bend Middle School .....	512-533-6400
Lake Pointe Elementary.....	512-533-6500
Lakeway Elementary .....	512-533-6350
Serene Hills Elementary .....	512-533-7400
Bee Cave Elementary.....	512-533-6250
West Cypress Elementary .....	512-533-7500

### UTILITIES

Travis County WCID # 17.....	512-266-1111
Lakeway MUD .....	512-261-6222
Hurst Creek MUD.....	512-261-6281
Austin Energy .....	512-322-9100
Pedernales Electric.....	888-554-4732
Texas Gas Service	
Custom Service.....	1-800-700-2443
Emergencies.....	512-370-8609
Call Before You Dig.....	512-472-2822
AT&T	
New Service.....	1-800-464-7928
Repair.....	1-800-246-8464
Billing.....	1-800-858-7928
Time Warner Cable	
Customer Service.....	512-485-5555
Repairs.....	512-485-5080
Austin/Travis County Hazardous Waste .....	512-974-4343

### OTHER NUMBERS

Bee Cave City Hall.....	512-767-6600
Bee Cave Library .....	512-767-6620
Municipal Court .....	512-767-6630
Lake Travis Postal Office.....	512-263-2458
City of Bee Cave .....	<a href="http://www.beecavetexas.com">www.beecavetexas.com</a>

### NEWSLETTER PUBLISHER

Peel, Inc. ....	512-263-9181
Editor.....	<a href="mailto:beecave@peelinc.com">beecave@peelinc.com</a>
Advertising.....	<a href="mailto:advertising@peelinc.com">advertising@peelinc.com</a>

# Table of Contents

The Bee Cave Messenger is a private publication published by Peel, Inc. It is not sanctioned by any homeowners association or organization, nor is it subject to the approval of any homeowners association or organization, nor is it intended, nor implied to replace any publication that may be published by or on behalf of any homeowners association or organization. At no time will any source be allowed to use the Bee Cave Messenger contents, or loan said contents, to others in anyway, shape or form, nor in any media, website, print, film, e-mail, electrostatic copy, fax, or etc. for the purpose of solicitation, commercial use, or any use for profit, political campaigns, or other self amplification, under penalty of law without written or expressed permission from Peel, Inc. The information in the newsletter is exclusively for the private use of Peel, Inc.

**DISCLAIMER:** Articles and ads in this newsletter express the opinions of their authors and do not necessarily reflect the opinions of Peel, Inc. or its employees. Peel, Inc. is not responsible for the accuracy of any facts stated in articles submitted by others. The publisher also assumes no responsibility for the advertising content with this publication. All warranties and representations made in the advertising content are solely that of the advertiser and any such claims regarding its content should be taken up with the advertiser.

\* The publisher assumes no liability with regard to its advertisers for misprints or failure to place advertising in this publication except for the actual cost of such advertising.

\* Although every effort is taken to avoid mistakes and/or misprints, the publisher assumes no responsibility for any errors of information or typographical mistakes, except as limited to the cost of advertising as stated above or in the case of misinformation, a printed retraction/correction.

\* Under no circumstances shall the publisher be held liable for incidental or consequential damages, inconvenience, loss of business or services, or any other liabilities from failure to publish, or from failure to publish in a timely manner, except as limited to liabilities stated above.

## AROUND BEE CAVE

- 6 Bee Cave Police Department's Citizens' Police Academy
- 6 Chlorosis
- 8 We're for Water, Whether in Drought or Not
- 9 Austin Music Scene Favorites Open Concert Series
- 10 AKA Vocal Show Group
- 11 English as a Second Language

## SCHOOL NEWS

- 12 LTHS PTO News

## BUSINESS SECTION

- 14 The Bee Cave-Spicewood Rotary Club

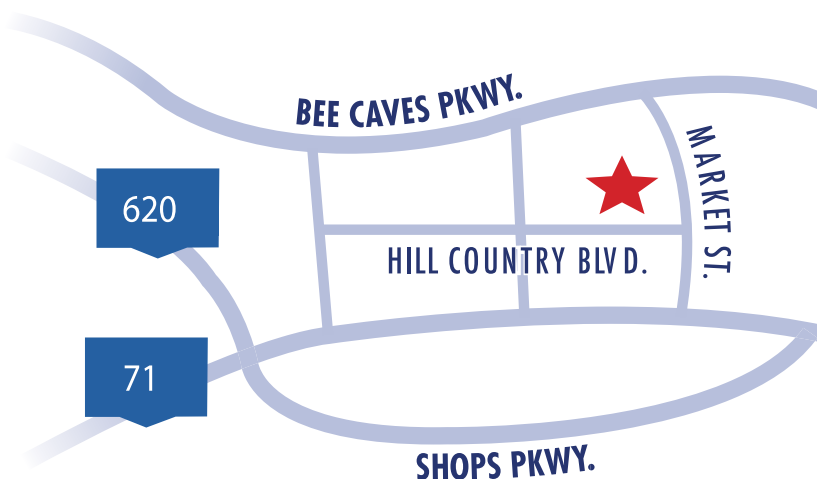
## IN EVERY ISSUE

- 14 Teenage Job Seekers

**Adult and Pediatric Healthcare • Same day appointments available**

## New Premier Family Physicians' location

**Opening  
August 17th in  
the Hill Country  
Galleria!**



***Now Accepting New Patients***

12600 Hill Country Blvd., Ste R-103 • Bee Cave, Texas 78738  
(512) 892-7076 • [www.pfpdocs.com](http://www.pfpdocs.com)



**PREMIER  
FAMILY  
PHYSICIANS**  
@ Bee Caves

# RETIRE BETTER WHAT THE FIDUCIARY!

WITH JOSH STIVERS

## **Q: What is a “Fiduciary”?**

A: When most people visit with their financial advisor, they assume that he or she is giving advice based on your best interests. After all, this is your life’s savings we are talking about. Shouldn’t you be able to assume in meeting with a financial advisor regarding planning with your money that it is a given that this financial professional has your needs front and center?

As it turns out, the unfortunate answer is that the financial services industry is more of a caveat emptor (buyer beware) environment. What’s going on here?

In the financial industry there are two general types of advisors – those who are “fiduciaries” and those who are not. It is of the utmost importance for you to understand the difference between the two.

By definition, a fiduciary is a person legally appointed and authorized to hold assets in trust for another person, and manage the assets for the benefit of the other person. Put simply, a fiduciary is exactly what you would expect from your financial advisor. A fiduciary is required to always place your needs first and share any conflicts of interest with you. They always place your interests before their own.

However, this is the minority of advisors. The majority are not fiduciaries, and for them, hidden conflicts of interests abound.

Here’s a good way to compare the two.

Let’s imagine that you should have a certain amount of money in a growth mutual fund as part of your portfolio. A fiduciary would do what

you would expect. They would compare all the growth funds out there to find the very best one for your circumstances. But remember, that’s the minority

The majority of advisors will put you in a growth fund that is on their company’s “preferred list”. This list is made up of the fund companies that pay extra money to the advisor and the company that advisor works for. Is it the best fund for you? Probably not. But does it pay the most to your advisor and their firm? You bet.


Is this arrangement a conflict of interest? Of course it is. The advisor puts their interests in front of yours, it happens every day, and many American don’t realize it.

If you apply this small example to your entire portfolio, you can just imagine how many little issues like this can blossom into a number of portfolio inefficiencies.

Of course, we at Platinum Wealth Advisory are fiduciaries. We are focused on building a plan with you that is best for your financial future—not my future and certainly not a plan that is based on a “preferred list”. If you would like to visit with us to review your retirement planning, give us a call at 512-369-3817.

If you would like further information on this topic or to receive a copy of our report on retirement income planning, please send your requests to the email below. As always, we are here to answer your pressing questions and concerns regarding retirement investment planning.

Send your questions and information requests to [retirebetter@platinumwealthadvisory.com](mailto:retirebetter@platinumwealthadvisory.com).

 512.369.3817

 [www.PlatinumWealthAdvisory.com](http://www.PlatinumWealthAdvisory.com)

 2802 Flintrock Trace, Ste. 221  
Lakeway, TX 78738



**JOSH STIVERS**

[RETIREBETTER@PLATINUMWEALTHADVISORY.COM](mailto:RETIREBETTER@PLATINUMWEALTHADVISORY.COM)



Securities offered through GF Investment Services, LLC. Member FINRA/  
SIPC. Investment Advisory Services offered through Global Financial  
Private Capital, LLC, an SEC Registered Investment Adviser.



# Around Bee Cave

## BEE CAVE POLICE DEPARTMENT CITIZEN'S POLICE ACADEMY

The Bee Cave Police Department proudly announced on May 28, 2015 that we will be starting our very first Citizen's Police Academy on SEPTEMBER 10th, 2015 at 6:00 p.m.

We are extremely excited to provide this training and experience to the citizens and business owners of the City of Bee Cave. The program, will last six weeks and cover topics such as traffic enforcement, criminal investigations, patrol operations, and administrative operations. The BCPD will team up with Lake Travis Fire Rescue who will also present to the students.

To apply, interested may either come by the Bee Cave Police Department and request an application, or simply contact Lt. William Pitmon at WPitmon@beecavetexas.gov and he will email the user friendly application to them. There is no cost to those selected, but the following requirements are mandatory:

- Be at least 21 yrs of age
- Have a valid Texas Drivers License
- No felony convictions
- No misdemeanor convictions Class B or above
- No arrests or convictions for Family Violence
- Must live within the City of Bee Cave, or
- Work within the City of Bee Cave

Applicants should understand up front that a standard background check will be conducted on them. A prior criminal history will not necessarily cause a rejection of your application depending on the totality of the circumstances. The final decision will be made by the Chief of Police on these instances.

For more information and to view our promotional video, those interested may visit our Facebook at:

<https://www.facebook.com/pages/Bee-Cave-Police-Department/406748709376530>

## CHLOROSIS

**(abnormal reduction or loss of the normal green coloration of leaves)**

Late summer too early fall is the time when this particular tree malady becomes most pronounced. The species of trees most commonly chlorotic are: Shumard Red Oak, Silver Maple, Chinese Tallow, Bald Cypress, and Live Oaks. Except for the Chinese Tallow and Silver Maple – the other species are most likely from seed stock or cuttings of parent plants that were not local and have no acclimation to our alkaline clay soil. Knowledgeable local nurseries do not sell you trees that are meant to grow in acidic, peat moss soil. In the early stages the tree's leaves will turn from green in the spring to a lime or yellow and finally have some leaf margin death and then curl up and fall off the tree. The later stages of this malady is characterized by the severe deformation and stunting of tree leaf size as well as new spring leaves start out the year yellow. Chlorosis can and usually does start a tree into a downward mortality spiral. Without a healthy capacity for producing food, a tree will become weak and often will succumb to minor pest or disease issues a healthy tree could survive without treatment.

What causes this condition is a deficiency of one or more nutrients. Often times in central Texas, it is usually the micronutrients: iron and manganese; yet it can be caused also by the deficiency of the other 20+ nutrients. Fixing the problem is not as simple as putting out fertilizer. First off, the most frequently used fertilizers have little or no micronutrients present. Second, the deficient nutrient may be present in the soil but because of the soil polarity of our calciferous clay soil – the tree is not able to extract the nutrient. Third, if it is a tree with genetic incapacity to obtain certain nutrients present in soil, a fertilizer can just be bound up by soil after application.

Can anything be done? Yes, there are sure methods of successfully providing your tree the missing nutrients. One way is to prepare soil drenches with fertilizers containing humic acid, chelated iron and various other nutrients in a soluble form. Another method is to do a foliar spray – basically give the tree a fertilizer shower. Yet another, and most effective, is to inject the nutrients directly into the cambium tissue of the tree. Lastly, one method of "treatment" is to dig up tree and replace it during the fall or winter season.

Questions or comments this article or previous articles have generated, may be directed to me at: [kevin@arborcareandconsulting.com](mailto:kevin@arborcareandconsulting.com).

### STEVE'S PLUMBING REPAIR

Master License: M-39722

- Water Pressure Problems
- Sewer & Drain Service
- Fiber Optic Drain Line Inspections
- Free Estimates
- Satisfaction Guaranteed

**Steve Brougher**  
**512.276.7476**

2605 Buell Ave





RESORT COMMUNITY & PRIVATE CLUB



## An extraordinary gated lakeside community just 15 minutes past ordinary.

If it's finally time to relax and enjoy a low-maintenance lifestyle, don't miss your opportunity to own one of our exquisite lakeside villas or cottages, ready for immediate move-in. If your dream is to own a custom home from one of Austin's finest builders, stop by to view the seven homes under construction to be featured in *Luxury Home Magazine's* 2015 Tour of Homes. Purchase now to participate in the building of your very own showcase home!

VILLAS FROM THE \$700S

COTTAGES FROM THE \$600S

ONE ACRE HOMESITES FROM THE \$190S

CUSTOM HOMES FROM \$1M+

LAKE TRAVIS ISD

RESORT-STYLE LAZY RIVER POOL

STATE-OF-THE-ART MARINA

FULL-SERVICE EQUESTRIAN CENTER

WATERFRONT DINING PAVILION

SPICEWOOD, TX

[ReserveAtLakeTravis.com](http://ReserveAtLakeTravis.com)  
1.800.214.3142

MCCOMBS PROPERTIES

HAL JONES  
DEVELOPMENT LLC

# Around Bee Cave

## We're for Water, Whether in Drought or Not

*Story from EPA/WaterSense*

Some 300 years ago, Thomas Fuller wrote, "We never know the worth of water, till the well is dry." It might be an old adage, but it's relevant today as more and more communities face concerns from mild water shortages to extreme drought. Even though Lake Travis is back up now, the drought of the past four years has reminded us it's always a good idea to save this precious resource for future generations and fellow consumers. That's why it is so important to use a little "WaterSense" to save water now and for the future. Here are our top tips to reduce your water use indoors and out.

- Follow the rules. Restrictions on water use are to ensure that water is available for critical community needs such as fire-fighting, and health care facilities. Save it for these important services!
- Check for leaks. Make sure your faucets, toilets, and showerheads are not leaking and check your sprinkler system. If you find leaks, fix them immediately. Leaks can rob your home of thousands of gallons of water each month, and they add up to more than 1 trillion gallons wasted across the United States each year!
- Consider an upgrade. If you're thinking about a bathroom refresh, now is the time to replace water-wasting fixtures with high-performing, WaterSense labeled models, which are independently certified to use at least 20 percent less water than standard models.

In fact, if you replace all the fixtures in your main bathroom with WaterSense labeled models, it could save nearly 10,000 gallons of water, or the amount it takes to wash 240 loads of laundry every year!

- Take a sprinkler break. Grass doesn't have to be bright green year-round. It's natural for your landscape to go dormant and look a little less vibrant during summer's hottest months. Also, raise your mower blade and leave the lawn a little long to help grow a more drought-resistant lawn with deeper roots, reduced evaporation, and fewer weeds.
- Go the extra mile. If you've done all you can to be water-efficient, get creative:
- Don't waste a drop. Collect water from your shower or kitchen chores and reuse it to water your flowers.
- Shave off a gallon or two. Turn off the faucet while you brush your teeth and shave; you could save more than 5,000 gallons of water per year, as well as the energy used to heat that water.
- Rev up recycling. Wash the car with dishwater from a bucket, or consider using a commercial car wash that recycles water.

Even if the rains return this fall, your water-saving ways shouldn't go away. Avoiding water-wasting habits will help you save water, energy, and money and help our community save water for the future.



**CROSSFIT HIVE**

**THANK YOU FOR ALL YOU DO,  
LAKE TRAVIS ISD TEACHERS**

**FREE MONTH OF CLASSES  
FOR ALL TEACHERS**

OFFER EXPIRES 9/30/15

512.296.0141 • 5004 BEE CREEK ROAD • BEE CAVE, TEXAS 78699

 [FACEBOOK.COM/CROSSFITHIVE](https://www.facebook.com/crossfithive)

---

# Austin Music Scene Favorites Open Concert Series

Spicewood Arts Society begins the 2015-2016 concert season with a high energy performance featuring some of Austin's best loved bluegrass, country, and blues musicians. The Warren Hood Band will be on stage September 18, 2015 at The Spicewood Vineyards Event Center, 1419 County Road 409 in Spicewood, Texas 78669.

Warren Hood, the band's namesake, is an accomplished singer/songwriter/composer who plays the violin, fiddle, mandolin, and guitar and was recognized 5 times as "String Player of the Year" by the Austin Music Awards Poll. When Warren is not appearing with the Warren Hood Band he joins well-known fellow artists such as Lyle Lovett, Toni Price and Joe Ely as well as many other premier musicians from around the country.

Joining in on guitar will be cousin Marshall Hood, dubbed "a blues man through and through", and Willie Pipkin, who was enticed away from hip hop to the blues at age 15 by none other than Austin music icon Clifford Antone. This trio of seasoned musicians will make you want to tap your feet, dance, and clap your hands as they delight patrons with the sounds that have made their names synonymous with great live music in Austin.

The performance will begin at 7 pm, but come early as doors

open at 6pm so that everyone has a chance to visit with friends and neighbors on the veranda of the beautiful country setting of the Spicewood Vineyards Event Center. Listen to the calming effect of the flowing brook as you enjoy some of the vineyards' wonderful wines which are available for purchase before the show and during intermission. Folks the best part is that this is in Spicewood, not 20, 30, or 40 miles away in Austin.

The 2015-2016 Season consists of 6 top notch performances and the best way to secure a seat at all of them is by purchasing a full season ticket. Individual tickets for performances that are not sold out will go on sale two weeks before the concert scheduled date. Really show your support for Spicewood Arts Society and all the wonderful things that this organization brings to the community by becoming a member.

For the line-up of the entire concert series, to purchase tickets, or to become a member go online to [www.spicewoodarts.org](http://www.spicewoodarts.org) or stop by the Home of the Arts Gallery/Office at 9408B Hwy. 71 West in Spicewood, open 11AM to 4PM Tuesday through Thursday. The office phone number is 512-264-2820.



From design to  
print to mail,  
**Quality Printing**  
can help you with  
all of your  
printing needs!



Call today for more info  
**512.263.9181**

Or visit our website at:  
**[www.QualityPrintingofAustin.com](http://www.QualityPrintingofAustin.com)**

# Around Bee Cave

## AKA Vocal Show Group

The popular AKA Vocal Show Group returns once again to the Lakeway Activity Center's stage for two nights in September. On September 25th and 26th, they are proud to present the best of the '60s and '70s.

The show opens with the most popular songs from their "We

Love The '60s" show, last on this stage in 2013. Join them for a nostalgic review of the music celebrating flower power, peace, love and rock 'n' roll; where we were groovy, far out, and right on. From Girl Groups to Motown, then on to the British Invasion, you'll love hearing favorites from the decade that had such an impact on our lives.

In the seventies, youth culture waved the white flag. Music benefited from the excess of ideas that had lingered from the optimism of the previous decade. Be transported back in time to the days of Funk, Soul, and, of course, Disco.

Tickets go on sale at the Lakeway Activity Center (512-261-1010) in September, and the \$15 purchase price includes set ups, soft drinks, and munchies. BYOB & designated driver. Doors open at 6:30, and the show starts at 7:30 PM. Revive your tie-dyed, bell bottomed best, or pull out those white "Travolta-esq" Disco suits! Arrive dressed for the occasion and come tune in, turn on, let it all hang out, and get down and boogie to the sounds of the 60s and 70s! Can you dig it?



## Starr Roofing

HIGHEST LEVEL OF WORKMANSHIP  
HONESTY, INTEGRITY

BEST PRODUCTS, BEST WARRANTY, BEST PRACTICES GUARANTEED

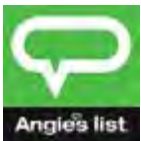
Not only LOCAL but NEIGHBORS with over 30 yrs of Experience

**512-736-6539**

Call for a free no-obligation inspection and consultation.

[www.starrcompaniesllc.com](http://www.starrcompaniesllc.com)

[starrroofing@yahoo.com](mailto:starrroofing@yahoo.com)



# ENGLISH AS SECOND LANGUAGE

The Spicewood Community Library is offering an "English as a Second language" class this fall with the first class scheduled for September 8 at 6:30 PM at the library building. The class meets Tuesdays and Thursdays during the winter months. Former members of the class have obtained promotions and better paying jobs as a result of improved language skills. Come join us for a safe place to practice your English. This class is free to all.

About the Library: It opened in July of 2007, operates 22 hours per week and has more than 10,000 items in its onsite catalog as well as a virtual, online branch for e-readers with more than 9,000 additional e-books and audio-books available for downloading. It also provides personal computers for patron use with Internet access during business hours as well as 24/7 via Wi-Fi access in the parking lot. To learn more, visit [www.spicewoodlibrary.org](http://www.spicewoodlibrary.org).

## Back To School

School starts in August, so now is the time for drivers to pay closer attention to the school zones in the neighborhood. We want to remind you that the speed limit in a school zone is 20mph and traffic fines double!

### Other changes to be aware of include;

- Children behaving unpredictably
- School Bus Stops
- Crossing Guards – please obey the guards! Remember, they are there for the safety of you and your children
- New areas of traffic congestion
- Be prepared for delays
- Use of cell phones in schools zones is prohibited!

Please give yourself extra time in the mornings and mid-afternoons and remember if you are traveling in a school zone to slow down.

## Time To Slow Down!



No one plans for divorce, but sometimes it happens. Our goal is to help people resolve their family law issues in a way that protects their interests and preserves their family relationships. Most family law cases can be difficult, both from an emotional and financial perspective. We believe in reducing the emotional and financial stress associated with family law matters by offering our clients alternative options to resolve their disputes, such as collaborative law, mediation and limited scope representation. We believe that clients reach better results when they resolve disputes cooperatively using methods such as collaborative law and divorce mediation. However, when that isn't possible, we commit ourselves to the ethical resolution of adversarial litigation.

We provide a variety of services to clients of all backgrounds. We have two lawyers who charge different hourly rates. This allows us to accommodate people with differing financial needs. We also offer both full scope and limited scope representation, so that our clients can choose the way they want to allocate their resources.

## Tim Whitten

*Board Certified Family Law Attorney*

### 25 Years Experience

812 San Antonio Street, Suite 401  
Austin, TX 78701

[www.whitten-law.com](http://www.whitten-law.com)

[info@whitten-law.com](mailto:info@whitten-law.com)

512.478.1011



## Practice Areas:

*Adoption | Grandparent and Non-parental Rights | Collaborative Law  
High-Asset Divorce | Modifications of Custody, Possession, and Support*



## LTHS PTO NEWS

The 2015-2016 Lake Travis High School year is off to an exciting and dramatic start. The old Lake Travis Middle School has completed its transformation into the new Lake Travis Freshman Annex building. Lake Travis High School now educates 2,700 students and encompasses a whopping 700,000 square feet of campus. The high school alone grew by approximately 160 students over the summer months.

Rapid growth often brings growing pains. The LTHS Parent Teacher Organization (PTO) plays a vital role in the limitations of state funding when faced with hyper growth. The PTO supports important student health and welfare programs in our school, including Project Graduation, Empower LT, and counseling from an on-campus psychologist.

In addition to ongoing student programs and staff appreciation, the LTHS PTO invests in a school Wish List. Each year, LTHS Principal Kim Brents works with her staff to identify and prioritize needs that cannot be met by the school budget, and brings this list to the PTO. The PTO membership allocates money to meet these needs as funds allow.

In 2014-2015, the PTO was able to allocate \$24,000 toward Wish List items for our campus. These items included: textbooks, educational tools and vocational licenses for our special education students, laptops, a water bottle filling station, travel costs for Model UN students to compete at Harvard University, and technology support tools for the new LTHS Annex.

Some of these items seem essential and you may wonder why Lake Travis property taxes didn't cover them initially. That is due to Texas State Equalization, a.k.a. "Robin Hood". Out of about 1200 public school districts in Texas, LTISD is considered a "Chapter 41 District". Simply put, we are one of about 175 districts subject to "recapture / Robin Hood" of tax dollars because we exceed the threshold of revenue dollars collected per student compared to the other districts within Texas. These funds are then redistributed throughout the state to the less fortunate districts. This 2015-2016 school year alone, LTISD is projected to send back \$31,799,720 in recapture payments, approximately 37.5% of our generated tax revenues, according to the LTISD CFO.

Your financial support to the LTHS PTO is essential for bridging these financial gaps and makes ongoing programs for students, staff and the Wish List possible. The LTHS PTO relies on two major sources of funding: ad sales for the LTISD Student Directory and the LTHS PTO No Hassle Fundraiser campaign. We call it "No Hassle" because we don't ask you or your student to buy or sell anything, just to make a one-time donation. Even if you can only donate \$15, it all goes to enriching the education of each child on our campus. You can donate anytime to the 2015-16 No Hassle Fundraiser by visiting our website [lthspato.org](http://lthspato.org). No donation is too small or too large. Go on, grant a wish!!

## NOW HIRING

### Advertising Sales Representative

**Description:** The position includes marketing our community newsletters to local and area businesses. It is a flexible position that allows you to work from home and set your own hours.

**Roles:** Stimulate new advertising accounts in our community newsletters. Maintain current accounts assigned to you by Sales Manager. Service your accounts by assisting them from ad design to final proof approval.

**Skills:** Excellent communication through email and phone, with high level presentation and relationship-building skills. Strong prospecting and business development skills are a must. Previous sales experience preferred but not required.

**Benefits:** Commission Based  
Apply by sending resume to [jobs@peelinc.com](mailto:jobs@peelinc.com)



PEEL, INC.

## A LOVE FOR LEARNING STARTS EARLY IN LIFE.



### Pre-Kindergarten

A good Pre-Kindergarten program should be well-rounded and multi-focused. Our Pre-K program is uniquely exceptional, focusing on whole-child development.

We stimulate specific cognitive development that challenges each child to learn through play and to think outside the box. This methodology results in there being a love of learning and a curiosity about the world around them. What we produce here at The Children's Center of Austin reaches far and above academic standards and strategically builds a curriculum program for success.

### Join our school!

Northwest Austin  
6507 Jester Blvd, Building 2  
Austin, Texas, 78750  
(512) 795-8300



[www.childrenscenterofaustin.com](http://www.childrenscenterofaustin.com)



## Attention KIDS: Send Us Your Masterpiece!

Color the drawing below and mail the finished artwork to us at:

Peel, Inc. - Kids Club, 308 Meadowlark St, Lakeway, TX 78734-4717

We will select the top few and post their artwork on our Facebook Page - Facebook.com/PeelInc.

DUE: September 30th

Be sure to include the following so we can let you know!

Name: \_\_\_\_\_ (first name, last initial)

Age: \_\_\_\_\_



BEE



## The Bee Cave- Spicewood Rotary Club

The Bee Cave - Spicewood Rotary Club (BCSR) announces Mike Bates has been named club President for 2015 - 2016 at the installation dinner held at J5 Steakhouse, Spicewood, Texas. Officers for 2015 - 2016 named at the same meeting are: President Elect Jack Marino, Vice President Tamara Strait, Past President Melody Kump, Treasurer Chris Thompson, Secretary Vince Luchsinger, and Sgt. at Arms Herb Schneider.

The club plans to serve the community again this year with its holiday food drive and a blood drive, as well as "Pints for Polio", an event to help eradicate this terrible disease from the planet. BCSR Club will continue its outstanding speaker series from last year when the club hosted speakers such as: Kara King - Bee Cave City Council Member; Dr. Brad Lancaster - LTISD Superintendent; Laura Mitchell, President, Lake Travis Chamber of Commerce; and Chief Miller, Bee Cave Police Department. Speakers scheduled to present at upcoming meetings include:

- State Representative Paul Workman
- Bee Cave Mayor Caroline Murphy
- Travis County Constable Adan Ballesteros
- Lakeway Mayor Joe Bain

The Bee Cave - Spicewood Rotary Club regularly meets at Mimi's Café on Tuesday mornings from 7:30 to 8:30. The community is invited to learn more about Rotary and the BCSR Club at the next networking/membership night at Café Blue on September 29 at 5:30 pm. As space is limited, please register for the event on our website. [www.beecaverotary.com](http://www.beecaverotary.com)

NOT AVAILABLE  
ONLINE

## BUSINESS CLASSIFIEDS

**THE EPISCOPAL CHURCH OF THE CROSS** is a new congregation gathering every Sunday at 10:00 AM for worship and children's ministry. You are invited! For more information, go to [www.ecclaketravis.org](http://www.ecclaketravis.org), or call 512-695-2803. Blessings to you this day!



# ALLSTARBURGER

EAT A BETTER BURGER

WE LIVE HERE  
WE TRADE HERE  
WE GIVE HERE

PROUD SUPPORTERS OF THE



BE SURE TO MENTION YOU'RE AN LTYA MEMBER, AND  
WE'LL DONATE A PORTION OF YOUR PURCHASE TO LTYA!



IN THE HILL COUNTRY GALLERIA 512.263.7300



**PEEL, INC.**

308 Meadowlark St. South  
Lakeway, TX 78734

PRSR STD  
U.S. POSTAGE  
PAID  
PEEL, INC.

BEE

## As an Independent Broker I have the flexibility to offer incentives tailored to *your needs*.

I assist in eliminating closing costs  
when representing both buyers  
and sellers.



When buying a new home, you're  
eligible to receive additional money  
towards upgrades.



List your home for 1.5%, when I also  
act as your buyer's agent.



Put my expertise to work for you. Your  
agents ability to price your home  
accurately will save you thousands.  
In the past six months, my listings have  
sold on average **at 98% of list price.**



*Serving Austin Since 2004!*

**Nicole Peel** Broker/Realtor® Lic.# 0527640



**PEEL REALTY**

**512.740.2300**

*nicole@nicolepeel.com*

[www.peelrealtyaustin.com](http://www.peelrealtyaustin.com)