



# BEE CAVE *Messenger*

VOLUME 6, ISSUE 10

OCTOBER 2015

NEWSLETTER FOR THE RESIDENTS OF THE BEE CAVE AREA



follow us on  
facebook

[Facebook.com/BeeCaveMessenger](https://www.facebook.com/BeeCaveMessenger)



# JAY'S IRON WORKS & IRON FENCE PAINTING



- Iron fence and gate painting
- Paint applied by hand to ensure proper thickness and durability
- 3yr warranty in all painted surfaces
  - Iron fence/gate repair
  - New install of fence/gates
- Access gate repair and install
- Million dollar insured



BEFORE

AFTER

832.344.7510 · [WWW.JAYSIRONWORKS.COM](http://WWW.JAYSIRONWORKS.COM) · [facebook](#) · [You Tube](#)

## ADVERTISING INFO

Please support the advertisers that make the Bee Cave Messenger possible. If you are interested in advertising, please contact our sales office at 512-263-9181 or [advertising@peelinc.com](mailto:advertising@peelinc.com). The advertising deadline is the 8th of the month prior to the issue.

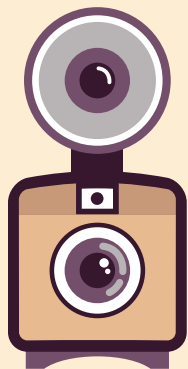
## ARTICLE INFO

The Bee Cave Messenger is mailed monthly to all Bee Cave area residents. Residents, community groups, churches, etc. are welcome to include information about their organizations in the newsletter. Personal news for the Stork Report, Teenage Job Seekers, recipes, special celebrations, and birthday announcements are also welcome.

To submit an article for the Bee Cave Messenger please email it to [beecave@peelinc.com](mailto:beecave@peelinc.com). The deadline is the 15th of the month prior to the issue.

## COVER PHOTO

### Do you take amazing photos?



Do you take great photos? Would you like to see your photo published? We are looking for great cover photos for upcoming issues of the Bee Cave Messenger. Our deadline for submittals is always the 9th of the month prior to the issue. All photos should be submitted electronically by the deadline date in high resolution (300 dpi) to [beecave@peelinc.com](mailto:beecave@peelinc.com). Portrait (vertical) photos work best.

This month's cover photo was submitted by Ron Dymesich.

To view other photos submitted please visit [www.PEELinc.com/BeeCave](http://www.PEELinc.com/BeeCave), and view any of the past newsletters.

By submitting your photo you agree to allow your photo to be published in future issues of the Bee Cave Messenger or other Peel, Inc. publications. Call 512-263-9181 to find out how to have your business featured on the cover of the Bee Cave Messenger.

## IMPORTANT NUMBERS

### EMERGENCY NUMBERS

EMERGENCY .....	911
Fire.....	911
Ambulance.....	911
Police Department .....	512-314-7590
Sheriff – Non-Emergency.....	512-974-0845
Travis County ESD No.6/Lake Travis Fire Rescue	
Administration Office.....	512-266-2533
Travis County Animal Control.....	512-972-6060

### SCHOOLS

Lake Travis ISD .....	512-533-6000
Lake Travis High School.....	512-533-6100
Lake Travis Middle School.....	512-533-6200
Lake Travis Elementary.....	512-533-6300
Hudson Bend Middle School .....	512-533-6400
Lake Pointe Elementary.....	512-533-6500
Lakeway Elementary .....	512-533-6350
Serene Hills Elementary .....	512-533-7400
Bee Cave Elementary.....	512-533-6250
West Cypress Elementary .....	512-533-7500

### UTILITIES

Travis County WCID # 17.....	512-266-1111
Lakeway MUD .....	512-261-6222
Hurst Creek MUD.....	512-261-6281
Austin Energy .....	512-322-9100
Pedernales Electric.....	888-554-4732
Texas Gas Service	
Custom Service.....	1-800-700-2443
Emergencies.....	512-370-8609
Call Before You Dig.....	512-472-2822
AT&T	
New Service.....	1-800-464-7928
Repair.....	1-800-246-8464
Billing.....	1-800-858-7928
Time Warner Cable	
Customer Service.....	512-485-5555
Repairs.....	512-485-5080
Austin/Travis County Hazardous Waste .....	512-974-4343

### OTHER NUMBERS

Bee Cave City Hall.....	512-767-6600
Bee Cave Library .....	512-767-6620
Municipal Court .....	512-767-6630
Lake Travis Postal Office.....	512-263-2458
City of Bee Cave .....	<a href="http://www.beecavetexas.com">www.beecavetexas.com</a>

### NEWSLETTER PUBLISHER

Peel, Inc. ....	512-263-9181
Editor.....	<a href="mailto:beecave@peelinc.com">beecave@peelinc.com</a>
Advertising.....	<a href="mailto:advertising@peelinc.com">advertising@peelinc.com</a>



# Table of Contents

The Bee Cave Messenger is a private publication published by Peel, Inc. It is not sanctioned by any homeowners association or organization, nor is it subject to the approval of any homeowners association or organization, nor is it intended, nor implied to replace any publication that may be published by or on behalf of any homeowners association or organization. At no time will any source be allowed to use the Bee Cave Messenger contents, or loan said contents, to others in anyway, shape or form, nor in any media, website, print, film, e-mail, electrostatic copy, fax, or etc. for the purpose of solicitation, commercial use, or any use for profit, political campaigns, or other self amplification, under penalty of law without written or expressed permission from Peel, Inc. The information in the newsletter is exclusively for the private use of Peel, Inc.

**DISCLAIMER:** Articles and ads in this newsletter express the opinions of their authors and do not necessarily reflect the opinions of Peel, Inc. or its employees. Peel, Inc. is not responsible for the accuracy of any facts stated in articles submitted by others. The publisher also assumes no responsibility for the advertising content with this publication. All warranties and representations made in the advertising content are solely that of the advertiser and any such claims regarding its content should be taken up with the advertiser.

\* The publisher assumes no liability with regard to its advertisers for misprints or failure to place advertising in this publication except for the actual cost of such advertising.

\* Although every effort is taken to avoid mistakes and/or misprints, the publisher assumes no responsibility for any errors of information or typographical mistakes, except as limited to the cost of advertising as stated above or in the case of misinformation, a printed retraction/correction.

\* Under no circumstances shall the publisher be held liable for incidental or consequential damages, inconvenience, loss of business or services, or any other liabilities from failure to publish, or from failure to publish in a timely manner, except as limited to liabilities stated above.

## AROUND BEE CAVE

- 6 The Hill Country Galleria October Events
- 6 Trick-or-Treat
- 8 Hill Country Galleria Hosts Komen Austin Event
- 9 LT Lov
- 9 Spicewood Arts Society
- 10 Vince Gill Brings Smiles to Children of Cleft
- 11 Car Show to Benefit Bee Cave Public Library

## SCHOOL NEWS

- 12 Mother and Son Kickball Tournament/Back to School

## SPORTS SECTION

- 13 LTHS Football

## BUSINESS SECTION

- 14 The Bee Cave-Spicewood Rotary Club

## IN EVERY ISSUE

- 14 Teenage Job Seekers

The  
Children's  
Center  
Of Austin



The Children's Center of Austin  
is hosting their Fall Festival

October 23, 2015 6:30 - 8 PM

COME JOIN US FOR LIVE MUSIC, COSTUME  
CONTEST, SILENT AUCTION. WE WILL HAVE  
FOOD AND TONS OF FUN!

**NORTHWEST AUSTIN**  
6507 Jester Boulevard  
Building 2  
Austin, TX 78750  
512.795.8300

**WESTLAKE**  
8100 Bee Caves Rd  
Austin, TX 78746  
512.329.6633



[www.childrenscenterofaustin.com](http://www.childrenscenterofaustin.com)

# RETIRE BETTER

# VITAL VOLATILITY

WITH JOSH STIVERS

Since the middle of August, the stock market has experienced increased volatility that we have not seen since the second half of 2011. The question is, were you ready?

Simply put, volatility is a measure of the roller coaster ride that individual stock and public markets go on when there is nervousness and unrest based on uncertain economic conditions.

For the past 4 years, our market has remained at a historically low level of volatility. Think of it like the Old Faithful Geyser in Yellowstone National Park. You don't know exactly when it is going to blow, but the pressure is going to build up and eventually let off a little steam.

During times of relative calm in the volatility of markets, it is important to begin to insulate your portfolio from the impending release of pressure that is sure to happen. Many institutional investors and university endowments utilize non-correlated investments to hedge against the volatility of public stock markets. These non-correlated assets tend to change in value independent of financial markets such as stocks and bonds.

It is also important to have a stash of cash on hand when volatility hits. The recent sell offs in public equity markets have created an opportunity to purchase quality stocks at drastically discounted prices. I liken this to the Foley's Red Apple Sale.

Back in the day, my mother would wait expectantly for this once a year sale to roll around so that she could stock up on the name brand department store items at discount store prices.

If you do not prepare for the eventual sale on quality stocks, then you might find yourself without enough purchasing power to make good on these name brand stock discounts.

With a proper allocation to non-correlated investments and a healthy portion of cash, many of our clients have been in a position to benefit from the recent market volatility. With more uncertainty on the road ahead, it's not too late to begin insulating your own personal investment portfolio from future fluctuations.

Ask yourself, were you comfortable with your experience on your investments over the last couple of months. If not, it may be time to stress test your current portfolio and begin to hedge your bets.

If you would like further information on this topic or to receive a copy of our report on retirement investment planning, please send your requests to the email below. As always, we are here to answer your pressing questions and concerns regarding retirement investment planning.

Send your questions and information requests to [retirebetter@platinumwealthadvisory.com](mailto:retirebetter@platinumwealthadvisory.com)

512.369.3817

[www.PlatinumWealthAdvisory.com](http://www.PlatinumWealthAdvisory.com)

2802 Flintrock Trace, Ste. 221  
Lakeway, TX 78738



**JOSH STIVERS**

[RETIREBETTER@PLATINUMWEALTHADVISORY.COM](mailto:RETIREBETTER@PLATINUMWEALTHADVISORY.COM)



Securities offered through GF Investment Services, LLC. Member FINRA/  
SIPC. Investment Advisory Services offered through Global Financial  
Private Capital, LLC, an SEC Registered Investment Adviser.



# Around Bee Cave

## The Hill Country Galleria October Events:

**Thursday, October 8th – October Wine Walk**

5pm-9pm, start at Twin Liquors

**Saturday, October 10th – Saturday Night Concert Series**

7pm-9pm featuring the Whiskey Shivers

**Saturday, October 17th – Saturday Night Concert Series**

7pm-9pm featuring Mayeux & Broussard

**Saturday, October 24th – Saturday Night Concert Series**

7pm-9pm featuring Two Tons of Steel

**Saturday, October 31st – Trick-or-Treat event**

4pm-9pm, participating retailers

**Saturday, October 31st – Saturday Night Concert Series**

7pm-9pm featuring the Chubby Knuckle Choir

**Sunday, November 1st – Rolling Sculpture Car Show**

11am-3pm benefiting the Bee Cave Public Library

**Thursday, November 5th – Hops & Shops**

5pm-9pm benefiting the Testicular Cancer Foundation

**Saturday, November 7th – Saturday Night Concert Series**

7pm-9pm featuring Trees Marie



**TRICK-OR-TREAT**  
AT HILL COUNTRY GALLERIA

A FAMILY-FRIENDLY EVENT ON  
**SATURDAY, OCTOBER 31<sup>ST</sup>**  
AT THE  
**HILL COUNTRY GALLERIA**  
WITH TRICK-OR-TREATING, COSTUMES,  
KIDS ACTIVITIES, AND HAIR-RAISING MUSIC!

4:00-5:00PM	KIDS ENTERTAINMENT BY JOE McDERMOTT
4:00-6:00PM	TRICK-OR-TREATING AT PARTICIPATING STORES
4:00-6:00PM	FREE FACE PAINTING
7:00-9:00PM	FREE LIVE MUSIC BY CHUBBY KNUCKLE CHOIR

512-263-0001 HILLCOUNTRYGALLERIA.COM  
12700 HILL COUNTRY BLVD., BEE CAVE, TX  
LOCATED ON HWY 71 BETWEEN 620 & BEE CAVE ROAD



**CROSSFIT HIVE**

**FALL FIT**

**28 Day Challenge**

**TRANSFORM YOURSELF TODAY**

512.296.0141 • 5004 BEE CREEK ROAD • BEE CAVE, TEXAS 78699

FACEBOOK.COM/CROSSFITHIVE



# ★ **ALLSTARBURGER**



**MENTION YOU'RE AN LTVA MEMBER, AND WE'LL  
DONATE A PORTION OF YOUR PURCHASE TO LTVA!**

**WE LIVE HERE.**

**WE TRADE HERE.**

**WE GIVE HERE.**



**LOCATED IN THE  
HILL COUNTRY GALLERIA**

**512.263.7300**

**[WWW.ALLSTARBURGER.COM](http://WWW.ALLSTARBURGER.COM)**

# Around Bee Cave

## HILL COUNTRY GALLERIA HOSTS KOMEN AUSTIN EVENT The Mrs set to perform

The Hill Country Galleria is teaming up with Susan G. Komen Austin for the third year to present a one-of-a-kind shopping and dining event called “eat.drink.shop. PINK”. On Saturday, October 3rd from noon-6pm the community is invited to eat, drink, shop, PINK with participating retailers in the Hill Country Galleria to join in the local fight against breast cancer.

Attendees should purchase a PINK PASSBOOK which will entitle holders to exclusive in-store discounts valid the entire month of October. Additionally, the PINK PASSBOOK serves as admission to the Pink Headquarters on October 3rd where attendees will enjoy beauty touch ups, complimentary bites and drinks, and plenty of pink swag, courtesy of Hill Country Galleria retailers. In the Pink Headquarters, a transformed space within the Hill Country Galleria located across from the outdoor amphitheater, guests may also purchase raffle tickets for their chance to win items at participating retailers. Items included in the raffle are a full outfit from LAVO



collections, a catered meal from Jersey Mike's Subs, even a YETI cooler from Backwoods.

The event includes a performance from local, female rock band, The Mrs. at 2pm in the Hill Country Galleria's outdoor amphitheater. Guests are encouraged to claim their seats on the lawn early, wear pink apparel, and prepare to be empowered by The Mrs. lyrics and style.

For those who cannot attend the event on October 3rd the PINK PASSBOOK is available to purchase online at [www.KomenAustin.org](http://www.KomenAustin.org) or purchase your PINK PASSBOOK at the Hill Country Galleria Guest Services office. Pricing is \$20 before October 3rd and \$25 after October 3rd. Exclusive offers inside the PINK PASSBOOK are valid throughout the entire month of October. All proceeds go directly to Komen Austin.

Media support for the event is provided by Mix 94.7, Magic 95.5, and 96.3 RnB, and all three stations will be onsite throughout the day with additional giveaways.



Divorce can be unexpected. If it cannot be avoided, then we want to help you protect your interests, whether they are family relationships that will survive the divorce or your property interests. We want to try and help you reduce the emotional financial stress of the process, while also protecting your interests. We will try and help you settle your case amicably, but if that is not possible, we have experience and will pursue ethical litigation. We have attorneys of different experience levels and different billing rates. We offer a variety of options, including full scope and limited scope representation. We want to give you some choices.

### Tim Whitten

Board Certified Family Law Attorney

**25 Years Experience**

812 San Antonio Street, Suite 401  
Austin, TX 78701

[www.whitten-law.com](http://www.whitten-law.com)

[info@whitten-law.com](mailto:info@whitten-law.com)

512.478.1011



### Practice Areas:

Adoption | Grandparent and Non-parental Rights | Collaborative Law  
High-Asset Divorce | Modifications of Custody, Possession, and Support





## LT Lov



Through generous donations of school supplies, backpacks and cash the Lake Travis community came together and provided our district's economically disadvantaged students with a great start to the new school year. LTlov would like to thank everyone who donated to this great program, in particular,

Austin Ridge Church and For The Children, as well as our amazing donation stations: World of Tennis and WOT Pilates, Strandz Salon, Bee Cave Family Chiropractic, Chick-Fil-A, Prosperity Bank, Elite Wellness, Kuper Sothebys, Lake Travis Community Library, Luxe Salon, Moreland Properties, Café Lago and both the Cielo and Madrone Apartments. LTlov also recognizes the hard work of the volunteers at the Lake Travis Crisis Ministry and our student and community volunteers who generously donated their time to make our sixth annual school supplies drive so successful this year. Pictured, LTlov School Supplies Drive Chair Fionnuala and Dr. Cash Lewis of Elite Wellness in Bee Cave. For more information visit [www.ltlov.org](http://www.ltlov.org).

## STEVE'S PLUMBING REPAIR

Master License: M-39722

- Water Pressure Problems
- Sewer & Drain Service
- Fiber Optic Drain Line Inspections
- Free Estimates
- Satisfaction Guaranteed

**Steve Brougner**  
**512.276.7476**



2605 Buell Ave

## Spicewood Arts Society



The Tejas Brothers bring their country, rock n' roll, and Western Swing sound to town as Spicewood Arts Society presents its second performance of the 2015-2016 concert series on October 16, 2015 at Spicewood Vineyards Events, 1419 CR 409 in

Spicewood, Texas , 78669.

This group, performing together since 2006, uses the stage like a weapon, attacking your heart and poking at your funny bone. Their sound is unique, yet familiar...it's like something brand new on top of something we've all known and loved forever. Once you've experienced a show, you'll never want to miss another. Says Roothog Radio of The Tejas Brothers " Their music is sure to put a wiggle in your walk".

All of the performances begin at 7PM with the doors opening an hour earlier so that everyone can enjoy the beautiful country setting on the veranda of the vineyard listing to the calming effect of the flowing brook. Wine from Spicewood Vineyards is available for purchase before the show and during intermission.

Individual tickets for this performance are now on sale for \$50 each, but the best value is in purchasing a season ticket for the remaining 5 concerts for \$180. All of the acts are top notch and we are so very fortunate to have them performing here in our community, rather than 20 or 30 miles away. Memberships at various levels are available as well.

For the line-up of the concert series, to purchase tickets, to become a member, or to learn about other Spicewood Arts Society's planned events go online to [www.spicewoodarts.org](http://www.spicewoodarts.org) or go by the Home of the Arts Gallery/Office at 9408B Hwy. 71 West in Spicewood, open 11 AM to 4PM Tuesday through Thursday. The office phone is 512-264-2820.



**ST. ANDREW'S**  
EPISCOPAL SCHOOL K-12



scholar



artist



athlete



servant

We are now accepting applications for K-12! Join us for open house and small group tours this fall. For more information call 512.299.9802 for grades K-8 or 512.299.9720 for grades 9-12. Visit [www.sasaustin.org](http://www.sasaustin.org).

Follow us!

[facebook/sasaustin.org](https://www.facebook.com/sasaustin.org)  
[@sasaustin](https://www.instagram.com/sasaustin)

## Vince Gill Brings Smiles to Children of Cleft

Austin Smiles, The Austin Plastic Surgery Foundation, provides reconstructive plastic surgery, primarily cleft lip and palate repairs, to the children of Central Texas and in various locations in Latin America. In partnership with the craniofacial and cleft team at Dell Children's Hospital, local plastic surgeons, nurses and other volunteers have performed over 2,500 reconstructive surgeries at no cost to the patients or their families. These surgeries are often critical for the patient's survival, severe cases affect a child's ability to eat, breathe and speak. This type of birth defect requires repeated surgeries as these children get older.

Locally, the cleft palate team meets with a patient's family before their newborn leaves the hospital and continues managing their care until they are 18 years old. The foundation provides program outreach, patient's assistance fund, and facilitates a weekend camp for children who are often ostracized from their community.

Internationally, the Austin Smiles team organizes three medical



mission trips each year. The team of surgeons, nurses and volunteers perform on average 65 surgeries during their brief time abroad. Each trip costs on average \$60,000 with each volunteer contributing to a portion of the expenses and surgeons paying for their entire trip.

"Wish Upon a Smile" is the foundation's largest annual fundraiser. During this year's wish event country music star Vince Gill will be performing in a private concert benefitting Austin Smiles. "We are thrilled to have Mr. Gill donating his time and talent to help these incredible children," says Kendyl Richards,

Executive Director. The event is being hosted at the Starlight Terrace at the Oasis, by longtime Austin Smiles supporter Beau Theriot.

Tables and individual tickets are still available for this must see event, which includes seated dinner, open bar, live auction and not to be missed performance by country music legend, Mr. Vince Gill. Visit [www.austinsmiles.org](http://www.austinsmiles.org) to purchase your tickets before they sell out.



# Starr Roofing

**HIGHEST LEVEL OF WORKMANSHIP  
HONESTY, INTEGRITY**

**BEST PRODUCTS, BEST WARRANTY, BEST PRACTICES GUARANTEED**

Not only LOCAL but NEIGHBORS with over 30 yrs of Experience

**512-736-6539**

**Call for a free no-obligation inspection and consultation.**

**[www.starrcompaniesllc.com](http://www.starrcompaniesllc.com)**

**[starrroofing@yahoo.com](mailto:starrroofing@yahoo.com)**





# Rolling Sculpture Car Show to Benefit Bee Cave Public Library

The Hill Country Rolling Sculpture Car Show will return for the eighth year on November 1, 2015. Between 150 and 200 collector cars, sports and exotics, modern classics, hot rods, art cars, and other motorized eye candy will be parked along the streets of the Hill Country Galleria in a celebration of automotive style in all of its forms. The show benefits the Bee Cave Public Library through paid sponsorships and show car registrations. All proceeds go to the Library, with more than \$33,000 raised over the past seven years. This money allows the Library to purchase special items or offer special programs that enhance and expand their services to the community.

The original Rolling Sculpture Car Show was started in the 1990s in Ann Arbor, Michigan by Bob Elton, a Detroit automotive stylist. Bob got permission from the City of Ann Arbor to barricade off a block of Main Street for what was intended to be a one-time car show. In contrast to the high end events that dominate southeast Michigan, Bob's vision was a car show that welcomed anyone who thought their car was "rolling sculpture" to bring it out and share it with their friends and the customers of restaurants and bars in the downtown district. The Ann Arbor show has become an institution, covering a dozen blocks and drawing hundreds of cars of every imaginable type and thousands of spectators. Every year, the show picks a local charity to benefit from the sponsorship and entrance fees.

When car-enthusiast Dean Mericas relocated from Michigan to Austin in 2007 and drove through the newly-opened Hill Country Galleria, he saw the ideal setting for a Texas version of the Rolling Sculpture concept. With the support of the Galleria management, and the Bee Cave Public Library as the designated charity, the first Hill Country Rolling Sculpture Car Show opened its gates on the last Sunday of October, 2008.

Since then, the Hill Country Rolling Sculpture Car Show has become an institution in Bee Cave, with upwards of 200 collector, classic, and special interest cars, trucks, motorcycles and even bicycles lining Hill Country Boulevard and its side streets to the continuing benefit of the Bee Cave Public Library. With live music, restaurants, shops, and a multi-screen theater available at the Galleria, the show makes for a day-long family event.

This year, the 8th annual Hill Country Rolling Sculpture Car Show will return to the Hill Country Galleria on Sunday, November 1st from 11 a.m. to 3 p.m. The focus is on fun and a common passion for everything automotive. Awards will be given by the show's sponsors according to themes they've selected. For example, Perkins Engineering will award their trophy to the "Most Unique Vehicle" and The Boardroom will select the "Best Benchmark Design." As in

*(Continued on Page 12)*



**PROUD SUPPORTER OF THE**  
**LAKE TRAVIS**  
**CAVALIERS**

SEND US YOUR GAME PHOTOS [LTCavs@PEELINC.COM](mailto:LTCavs@PEELINC.COM)

 **PEEL, INC.**  
printing & publishing

CONTACT US FOR ALL YOUR PRINTING NEEDS  
**LAKEWAY OWNED & OPERATED**  
**512-263-9181 - [WWW.PEELINC.COM](http://WWW.PEELINC.COM)**



# School News

*(Continued from Page 11)*

past years, all proceeds from the show will benefit the Friends of Bee Cave Public Library. Other trophy-level sponsors this year include Ben Archer State Farm Insurance, Elite Wellness Chiropractic, Lisa Butler Keller Williams Realty, and Hill Country Design Build. Additional partners already on board include Ash Creek Homes, Avanti Hills at the Galleria, and the Shops at the Galleria.

"The Rolling Sculpture Car Show has been so good to us," said Library Director Barbara Hathaway. "There are never enough funds to meet all the needs of a library growing as fast as Bee Cave's. Over the past 7 years, the funds raised by the Car Show have helped to underwrite new programs and equipment beyond the scope of our city budget. This year, for example, the Friends of the Library purchased high-quality podcasting equipment that the teens will use to create original podcasts to help market library programs and events. In past years, car show funds helped launch our initial foray into downloadable e-books, and allowed us to purchase replacements for a lot of well-worn series of children's books like Harry Potter and Percy Jackson."

The Rolling Sculpture Car Show is free to the public, and runs from 11 a.m. to 3 p.m. There will be live music during the event, with trophies awarded at 2:30 p.m. To sponsor, please contact Library Director Barbara Hathaway at 512.767.6624 or bhathaway@beecavetexas.gov. To register a vehicle to show, visit [www.rollingsculpturecarshow.com](http://www.rollingsculpturecarshow.com).

## Mother and Son Kickball Tournament

The Mother and Son Kickball Tournament was a success! Thanks you Bee Cave PTO and all who made the night a success.



Back to school! Kye McDonald 5th grade

**PEACE  
BE WITH YOU**

**CHURCH  
OF THE CROSS**  
— Episcopal —

Worship and Children's Ministry 10:00 AM Serene Hills Elementary School  
3301 Serene Hills Drive 512-695-2803 [ecclaketravis.org](http://ecclaketravis.org)

**MAGNOLIA MUSIC  
PIANO STUDIO**

*Magnolia Music Piano Studio is dedicated to offering piano lessons with a warm and personal approach for students ages 5 and up.*

**Sandra Tate**  
**Owner and Instructor**

Located in Sola Vista/West Cypress Hills off Hwy. 71  
5220 Diamante Drive, Spicewood, TX 78669

**512.840.1965**  
[sandratate@magnoliamusicpianostudio.com](mailto:sandratate@magnoliamusicpianostudio.com)  
[magnoliamusicpianostudio.com](http://magnoliamusicpianostudio.com)



# LTHS FOOTBALL

Photos Provide by Shelia Parodi | [www.spsportpics.com](http://www.spsportpics.com)



# Business Section



## The Bee Cave-Spicewood Rotary Club

The Bee Cave ~ Spicewood Rotary Club regularly meets at Mimi's Café on Tuesday mornings from 7:30 to 8:30. The community is invited to learn more about Rotary and the BCSR Club at the next networking/membership night. As space is limited, please register for the event on our website. [www.beecaverotary.com](http://www.beecaverotary.com)

**NOT AVAILABLE  
ONLINE**

## NOW HIRING

### Advertising Sales Representative

**Description:** The position includes marketing our community newsletters to local and area businesses. It is a flexible position that allows you to work from home and set your own hours.

**Roles:** Stimulate new advertising accounts in our community newsletters. Maintain current accounts assigned to you by Sales Manager. Service your accounts by assisting them from ad design to final proof approval.

**Skills:** Excellent communication through email and phone, with high level presentation and relationship-building skills. Strong prospecting and business development skills are a must. Previous sales experience preferred but not required.

**Benefits:** Commission Based  
Apply by sending resume to [jobs@peelinc.com](mailto:jobs@peelinc.com)



PEEL, INC.

## BUSINESS CLASSIFIEDS

**NUTRITION BY LAINE** EAT WELL, EAT CLEAN, STAY LEAN. Get a head start on your routine before the holidays hit. Weekly meal plans based on your individual's caloric needs. Nutrition plans for vegans, pale, gluten free, dairy free, children, adults and athletes. For more information please contact me at [www.laine@nutritionbylaine.com](mailto:www.laine@nutritionbylaine.com)





Quality Designs.  
Exceptional Craftsmanship.  
Simple Luxury.

ANNOUNCING OUR  
NEW SINGLE FAMILY  
HOMES IN:

*Serene Hills*  
LUXURY LIVING IN THE HILLS

COMING FALL OF 2015  
CALL NOW FOR DETAILS



### Ash Creek Homes at Serene Hills

- 23 Single-Family Homes (starting at 2,500 sq. ft.)
- One and Two Story Floorplans with Varied Elevations
- 2 and 3 Car Garages
- Exceptional Floorplans with High End Finishes
- Spacious Homesites for Unlimited Outdoor Living
- Within Lakeway City Limits
- Quality Exterior Finishes with 100% Masonry
- Within the Coveted Lake Travis ISD:  
Lake Travis High School, Lake Travis Middle School,  
Serene Hills Elementary
- Community Hike and Bike Trail
- 5.5 Miles to the Hill Country Galleria and  
Downtown Bee Cave
- Close to Area Amenities & Outdoor Recreation
- Hill Country Views and Green Belt Lots

**AshCreekHomes.com**  
**512-328-2122**

Find us in the Los Senderos subdivision off  
of Serene Hills Drive in Lakeway





**PEEL, INC.**

308 Meadowlark St. South  
Lakeway, TX 78734

PRSR STD  
U.S. POSTAGE  
PAID  
PEEL, INC.

BEE

## As an Independent Broker I have the flexibility to offer incentives tailored to *your needs*.

I assist in eliminating closing costs  
when representing both buyers  
and sellers.



When buying a new home, you're  
eligible to receive additional money  
towards upgrades.



List your home for 1.5%, when I also  
act as your buyer's agent.



Put my expertise to work for you. Your  
agents ability to price your home  
accurately will save you thousands.  
In the past six months, my listings have  
sold on average **at 98% of list price.**



*Serving Austin Since 2004!*

**Nicole Peel** Broker/Realtor® Lic.# 0527640



**PEEL REALTY**

**512.740.2300**

*nicole@nicolepeel.com*

[www.peelrealtyaustin.com](http://www.peelrealtyaustin.com)