

West Lake Hills ECHO

Volume 5, Issue 10

October 2016

WESTLAKE CHAMBER OF COMMERCE ANNOUNCES 14TH ANNUAL WESTLAKE GOLF CLASSIC

The Westlake Chamber of Commerce is proud to announce the tee-off of The Westlake Golf Classic at Falconhead Golf Club, 15201 Falcon Head Blvd, Austin, TX 78738. The tournament is Monday, November 7, 2016 and begins with registration and an open driving range at 10:30 am, registration starts at 11 followed by the Shotgun Start–Four Person Scramble at 12:00 pm. Tournament fee is \$150 per individual or \$500 per four-person team and includes: green fee with carts and range balls, lunch, dinner, and three drink tickets per golfer. There will be prizes for the winning teams, holes-in-one, the longest drive, and closest-to-the-pin. Sponsorships are still available!

The Westlake Chamber of Commerce, founded in 1995, is dedicated to the economic stability and well being of the greater Westlake community. Members of the chamber choose to contribute their time, expertise, and/or resources to supporting Chamber growth, the Westlake community, and philanthropic projects.

Mark Twain said, "Golf is a good walk spoiled." Come spoil your walk at the Westlake Golf Classic. To learn more, call 512-327-3088 or visit www.westlakechamber.com/pages/WestlakeGolfClassic.



IMPORTANT NUMBERS

EMERGENCY NUMBERS

EMERGENCY	911
Fire.....	911
Ambulance.....	911
Police Department	512-327-1195
Sheriff – Non-Emergency.....	512-974-0845
Fire Department Administration	512-539-3400
Travis County Animal Control.....	512-972-6060

SCHOOLS

Eanes ISD	512-732-9000
Westlake High School.....	512-732-9280
Ninth Grade Center	512-732-9260
West Ridge Middle School	512-732-9240
Hill Country Middle School	512-732-9220
Valley View Elementary.....	512-732-9140
Forest Trail Elementary.....	512-732-9160
Eanes Elementary.....	512-732-9100
Cedar Creek Elementary	512-732-9120
Bridge Point Elementary	512-732-9200
Barton Creek Elementary	512-732-9100

UTILITIES

Water District 10	512-327-2230
Wastewater	
Crossroads Utility Service 24 Hour Number....	512-246-1400
New Accounts	512-402-1990
Austin Energy	512-322-9100
Texas Gas Service	
Custom Service.....	1-800-700-2443
Emergencies.....	512-370-8609
Call Before You Dig.....	512-472-2822
AT&T	
New Service.....	1-800-464-7928
Repair.....	1-800-246-8464
Billing.....	1-800-858-7928
Time Warner Cable	
Customer Service.....	512-485-5555
Repairs.....	512-485-5080
Austin/Travis County Hazardous Waste	512-974-4343

OTHER NUMBERS

City Administration	512-327-3628
Municipal Court	512-327-1863
Property Tax	512-854-9473
Appraisal District	512-834-9317
Chamber of Commerce.....	512-306-0023
City of West Lake Hills	www.westlakehills.org

NEWSLETTER PUBLISHER

Peel, Inc.	512-263-9181
Editor.....	westlakehills@peelinc.com
Advertising.....	advertising@peelinc.com



Partnership For Children

Submitted by Megan Ransom

Meet 10 year old Jamarrian, he is an energetic, friendly and outgoing child. He enjoys doing puzzles, playing video games and being outdoors. Jamarrian is a very intelligent young boy and does well academically. The ideal forever family would provide him with ample love and support, as well as consistent rules, boundaries and expectations. Learn more about Jamarrian on the Heart Gallery of Central Texas Website- www.heartgallerytexas.com.

There are no fees to adopt from the foster care system regardless of which agency you work with. There is only one pool of children, and they are all in care of the state, every licensed agency has the ability to assist in adoption of any foster child in Texas. Child placing agencies are also foster care providers. The first step is to choose a child placing agency to begin your journey. Learn more about starting the adoption process and the children waiting for forever families at www.heartgallerytexas.com.

A Purveyor of fine Men's, Women's, and Children's Clothing

Now Open in Barton Creek Mall

Visit our other location at the Hill Country Galleria



Southern Tide • Vineyard Vines • Johnnie-O • Tommy Bahama • Robert Graham • Southern Marsh • Nat Nast
Bugatchi • Rowdy Gentlemen • 7 For All Mankind • Citizens of Humanity • 34 Heritage Jeans • Johnston Murphy
Cole Haan • Under Armour • Lauren James • AG Jeans for Men & Women • Hugo Boss • Jude Connally

Gatsby's
2901 S Capital of Texas HWY
Austin, TX 78746
(Located next to Nordstrom's)
512-906-0977

GATSBY'S

PURVEYOR OF FINE APPAREL

Tuxedo Rentals – Onsite Tailor

Texas Legal: Identity Theft 101

Sadly, more and more people are realizing Identity Theft is an issue they may face, and they may need legal support if affected.

Texas Legal, the nonprofit that has been offering legal insurance to Texans for 40+ years, has partnered with AllClear ID, a technology leader in the identity protection market, to provide its members identity repair services, monitoring and restoration. If affected, a licensed investigator goes to work on your behalf to restore your credit to its accurate state.

It's a big and growing problem.

According to the FTC (Federal Trade Commission), there are more than 9 million victims of identity theft in the U.S. every year. That's about nine out of every 300 people, so there is a good chance you or someone you know has been affected or will be affected. There are various ways a thief can use your personal information, including misusing your Social Security number, making purchases with your lost or stolen credit cards, using your checking account or fraudulently opening an account in your name, among others.

While many identity crimes are about buying something on someone else's dime, that's not all identity thieves can do with your information. These days, thieves are also using your information to get medical services (called medical identity theft) or to obtain a job (employment fraud). Both can cause serious repercussions for your future, including

the denial of medical benefits or your dream job.

Often, sadly, many victims of identity theft actually know the person who perpetrated the theft. It could be an employee, a neighbor or even a family member. Be very wary of sharing your accounts, usernames, passwords, social security numbers or other personal information with anyone. Older adults are particularly vulnerable to having their information stolen by caregivers who abuse their trust.

While we generally think of identity theft victims as adults – stolen credit cards, email passwords, data breaches, etc. – children are actually much more likely to be victims of identity theft. AllClearID data shows children are 35 times more likely to have their identity compromised. This is because children have clear credit histories which are easy to take advantage of. And, no one is paying attention, so the theft can go on for years before someone notices and intervenes.

So What Can You Do?

Personal information is a valuable commodity. Knowing how to protect your information –and your identity – is a must in the 21st century and can help reduce your risk of identity theft. Texas Legal shares these six tips:

- Keep your personal information secure online. If you post too much information about yourself on social media networking sites, an

(Continued on Page 5)



Collaborative Divorce
Board Certified Family Law Attorney
25 Years Experience
Let us help you understand your options.

Tim Whitten
Board Certified Family Law Attorney

812 San Antonio Street, Suite 401
Austin, TX 78701

www.whitten-law.com
info@whitten-law.com
512.478.1011



Practice Areas:

Adoption | Grandparent and Non-parental Rights | Collaborative Law
High-Asset Divorce | Modifications of Custody, Possession, and Support



(Continued from Page 4)

- identity thief can find information about your life, use it to answer 'challenge' questions on your accounts, and get access to your bank accounts and other information.
- Keep your personal information secure offline. Review account activity regularly, not just when statements come out. When you order new checks, don't have them mailed to your home unless you have a secure mailbox with a lock. Destroy labels on prescription bottles before you throw them out.
- Properly dispose of devices. Before you dispose of a computer, use a wipe utility program to overwrite the entire hard drive. Before you dispose of a mobile device, check the service provider's website or device manufacturer's website on how to delete information permanently.
- Safeguard your Social Security number. Ask questions before deciding to share it, including if you can use a different kind of identification. Safeguard the social security numbers of your children and their confidential information too.
- Keep your devices secure. Don't use an automatic log-in feature that saves your username and password. Always log off your laptop when you are finished. Before you send personal information over your laptop, tablet or smart phone on a public wireless network, see if your information is protected. If you use an encrypted website, it protects only the information you send to and from that site. If

you use a secure wireless network, all the information you send on that network is protected.

- Secure your home wireless network/wifi. Don't leave your home network unprotected, change your wifi network name and password from default, and often if you share it. Use your router's built in protection, make sure both encryption and the built in firewall are turned on.

This content provided by Texas Legal, a statewide, nonprofit legal insurance plan founded by the State Bar of Texas and the Texas Legislature in 1972 as an effort to better serve the legal needs of Texans. More at www.texaslegal.org.

STEVE'S PLUMBING REPAIR

Master License: M-39722

- Water Pressure Problems
- Sewer & Drain Service
- Fiber Optic Drain Line Inspections
- Free Estimates
- Satisfaction Guaranteed

Steve Brougner
512.276.7476

2605 Buell Ave



NOW HIRING

Advertising Sales Representative

Description: The position includes marketing our community newsletters to local and area businesses. It is a flexible position that allows you to work from home and set your own hours.

Roles: Stimulate new advertising accounts in our community newsletters. Maintain current accounts assigned to you by Sales Manager. Service your accounts by assisting them from ad design to final proof approval.

Skills: Excellent communication through email and phone, with high level presentation and relationship-building skills. Strong prospecting and business development skills are a must. Previous sales experience preferred but not required.

Benefits: Commission Based
Apply by sending resume to jobs@peelinc.com



PEEL, INC.

PRINTING IS
AN ART
MAKE SOME
WITH US!

Call today for more info
512.263.9181



QualityPrintingOfAustin.com

NATURE WATCH

Mysterious Migration

by Jim and Lynne Weber

Fall migration season is upon us, and that usually conjures up thoughts of songbirds and hawks using the central flyway through Texas to make their way south to the subtropics and tropics for the winter. However, birds are not the only ones who migrate, and while much has been said about the complex, annual migration made by Monarch butterflies, the record for the longest insect migration (twice the distance of the Monarch) belongs to a dragonfly species, the Wandering Glider (*Pantala flavescens*). In fact, dragonfly migration has been suspected for over 100 years, and up to 50 of the world's 5,200 dragonfly species are thought to migrate (about 16 out of 326 in North America), but not much is known about where they are coming from or where they are going.

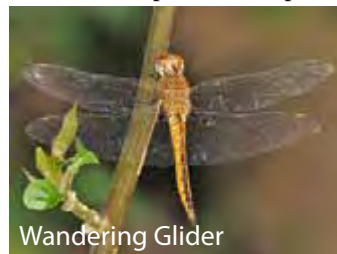
In Texas, there are several species of dragonflies that migrate in addition to the Wandering Glider. They include the Common Green Darner (*Anax junius*), Black Saddlebags (*Tramea lacerata*), Variegated Meadowhawk (*Sympetrum corruptum*), and Spot-winged Glider (*Pantala hymenaea*). Cooler nights seem to trigger the dragonflies' journey south, and like birds, they build up their fat reserves before setting out. They may use the lay of the land as a navigation guide, and some scientists speculate that they have an internal magnetic compass, as those that fly off course and out to sea appear to realize their mistake and reorient themselves.

Dragonflies migrate during daylight hours, and green darners have been found to break their journeys every three days to rest and feed, using oak and juniper trees as stopover sites. Like monarchs, the full migration circuit takes multiple generations to complete, as it is the offspring of the generation that traveled south in the fall that is migrating north again in the spring.

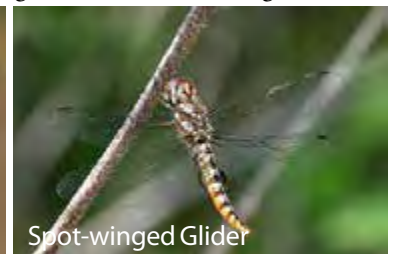
Swarms of dragonflies can create one of nature's most impressive spectacles, with tens to hundreds of thousands of individuals

streaming southward along lakeshores, mountain ridges, and coastlines. Even with the origins and destinations poorly known, the migration in the fall is more noticeable than that in the spring, presumably because the spring event occurs over a wider front and a longer period of time. However, migration is the only explanation for how dragonfly adults appear in early spring in places where their nymphs or larvae from the previous year or years have not yet emerged.

The ecological role of migrating dragonflies is another facet of the mystery yet to be resolved. Since several species use the same migration strategies and timing as migratory birds, traveling at the same times and concentrating in the same places, it is likely that certain bird species are exploiting the abundance of dragonflies as a



Wandering Glider



Spot-winged Glider

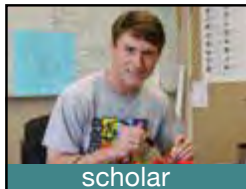


Common Green Darner

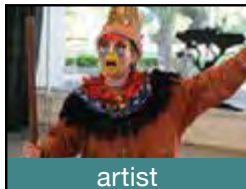


Black Saddlebags

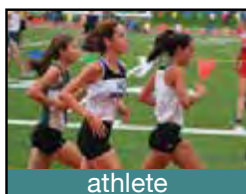
(Continued on Page 7)



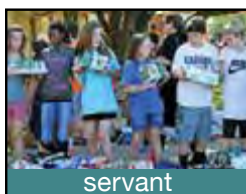
scholar



artist



athlete



servant

Join us for open house and small group tours!

For more information visit www.sasaustin.org or call 512.299.9802 for grades K-8 or 512.299.9720 for grades 9-12.

Lower/Middle School: 1112 W. 31st St.

Upper School: 5901 Southwest Pkwy.

 Follow us! [facebook/sasaustin.org](https://facebook.com/sasaustin.org)



ST. ANDREW'S
EPISCOPAL SCHOOL K-12

(Continued from Page 6)

source of fuel for their own migration. More research is being done to solve these mysteries, most notably the Xerces Society's Migratory Dragonfly Partnership initiative, which uses "research, citizen science, education, and outreach to understand North American dragonfly migration and promote conservation."

Send your nature-related questions to naturewatch@austin.rr.com and we'll do our best to answer them. If you enjoy reading these articles, check out our book, *Nature Watch Austin* (published by Texas A&M University Press), and our blog at naturewatchaustin.blogspot.com.



Variegated Meadowhawk

The West Lake Hills Echo is a private publication published by Peel, Inc. It is not sanctioned by any homeowners association or organization, nor is it subject to the approval of any homeowners association or organization, nor is it intended, nor implied to replace any publication that may be published by or on behalf of any homeowners association or organization. At no time will any source be allowed to use the West Lake Hills Echo contents, or loan said contents, to others in anyway, shape or form, nor in any media, website, print, film, e-mail, electrostatic copy, fax, or etc. for the purpose of solicitation, commercial use, or any use for profit, political campaigns, or other self amplification, under penalty of law without written or expressed permission from Peel, Inc. The information in the newsletter is exclusively for the private use of Peel, Inc.

DISCLAIMER: Articles and ads in this newsletter express the opinions of their authors and do not necessarily reflect the opinions of Peel, Inc. or its employees. Peel, Inc. is not responsible for the accuracy of any facts stated in articles submitted by others. The publisher also assumes no responsibility for the advertising content with this publication. All warranties and representations made in the advertising content are solely that of the advertiser and any such claims regarding its content should be taken up with the advertiser.

* The publisher assumes no liability with regard to its advertisers for misprints or failure to place advertising in this publication except for the actual cost of such advertising.

* Although every effort is taken to avoid mistakes and/or misprints, the publisher assumes no responsibility for any errors of information or typographical mistakes, except as limited to the cost of advertising as stated above or in the case of misinformation, a printed retraction/correction.

* Under no circumstances shall the publisher be held liable for incidental or consequential damages, inconvenience, loss of business or services, or any other liabilities from failure to publish, or from failure to publish in a timely manner, except as limited to liabilities stated above.

The
Children's
Center
Of Austin



The Children's Center of Austin
is hosting their Fall Festival

October 28th from 6:30 - 8 PM

COME JOIN US FOR LIVE MUSIC,
COSTUME CONTEST, SILENT
AUCTION. WE WILL HAVE FOOD
AND TONS OF FUN!

WESTLAKE
8100 Bee Caves Rd
Austin, TX 78746
512.329.6633



www.childrenscenterofaustin.com



PEEL, INC.

308 Meadowlark St. South
Lakeway, TX 78734

PRSR STD
U.S. POSTAGE
PAID
PEEL, INC.

WES



BERKSHIRE HATHAWAY HomeServices Texas Realty

Berkshire Hathaway Texas Realty 2008-2016 #1 Top Sales
www.CallKent.com | Twitter: @HomesInAustin

KENT REDDING

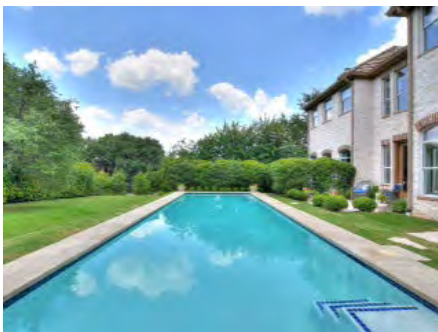


Purpose DRIVEN • Passion LED • People FOCUSED



Bella Lago | Lake Austin | Eanes

Highly updated European-inspired custom home meticulously maintained and updated by original owners. Dramatic white eat-in kitchen with Viking, Miele and Thermador, light herringbone pavers, white subway tile, 2 full-size sinks, butler's pantry w/2 extra ovens perfect. Intricate design details include; 9 foot Durango entry door, Murano chandeliers, Latticino pendant lamps, light and bright beech wood floors. Two attached oversized 2-car garages. All this plus super low taxes, rare private Lake Austin neighborhood park, playground and junior Olympic size pool. EZ access to shopping, dining and downtown Austin. Truly a rare gem.



**5 Bed | 5 Baths | 4 Car Garage
5651SF | 1 Acre | \$1,198,400**

www.2400Démona.com Call/Text 512.797.5737