

# West Lake Hills ECHO

Volume 5, Issue 11

November 2016

## WESTLAKE CHAMBER OF COMMERCE ANNOUNCES 14TH ANNUAL WESTLAKE GOLF CLASSIC

The Westlake Chamber of Commerce is proud to announce the tee-off of The Westlake Golf Classic at Falconhead Golf Club, 15201 Falcon Head Blvd, Austin, TX 78738. The tournament is Monday, November 7, 2016 and begins with registration and an open driving range at 10:30 am, registration starts at 11 followed by the Shotgun Start-Four Person Scramble at 12:00 pm. Tournament fee is \$150 per individual or \$500 per four-person team and includes: green fee with carts and range balls, lunch, dinner, and three drink tickets per golfer. There will be prizes for the winning teams, holes-in-one, the longest drive, and closest-to-the-pin. Sponsorships are still available!

The Westlake Chamber of Commerce, founded in 1995, is dedicated to the economic stability and well being of the greater Westlake community. Members of the chamber choose to contribute their time, expertise, and/or resources to supporting Chamber growth, the Westlake community, and philanthropic projects.

Mark Twain said, "Golf is a good walk spoiled." Come spoil your walk at the Westlake Golf Classic. To learn more, call 512-327-3088 or visit [www.westlakechamber.com/pages/WestlakeGolfClassic](http://www.westlakechamber.com/pages/WestlakeGolfClassic).



# IMPORTANT NUMBERS

## EMERGENCY NUMBERS

EMERGENCY .....	911
Fire.....	911
Ambulance.....	911
Police Department .....	512-327-1195
Sheriff – Non-Emergency.....	512-974-0845
Fire Department Administration .....	512-539-3400
Travis County Animal Control.....	512-972-6060

## SCHOOLS

Eanes ISD .....	512-732-9000
Westlake High School.....	512-732-9280
Ninth Grade Center .....	512-732-9260
West Ridge Middle School .....	512-732-9240
Hill Country Middle School .....	512-732-9220
Valley View Elementary.....	512-732-9140
Forest Trail Elementary.....	512-732-9160
Eanes Elementary.....	512-732-9100
Cedar Creek Elementary .....	512-732-9120
Bridge Point Elementary .....	512-732-9200
Barton Creek Elementary .....	512-732-9100

## UTILITIES

Water District 10 .....	512-327-2230
Wastewater	
Crossroads Utility Service 24 Hour Number....	512-246-1400
New Accounts .....	512-402-1990
Austin Energy .....	512-322-9100
Texas Gas Service	
Custom Service.....	1-800-700-2443
Emergencies.....	512-370-8609
Call Before You Dig.....	512-472-2822
AT&T	
New Service.....	1-800-464-7928
Repair.....	1-800-246-8464
Billing.....	1-800-858-7928
Time Warner Cable	
Customer Service.....	512-485-5555
Repairs.....	512-485-5080
Austin/Travis County Hazardous Waste .....	512-974-4343

## OTHER NUMBERS

City Administration .....	512-327-3628
Municipal Court .....	512-327-1863
Property Tax .....	512-854-9473
Appraisal District .....	512-834-9317
Chamber of Commerce.....	512-306-0023
City of West Lake Hills .....	www.westlakehills.org

## NEWSLETTER PUBLISHER

Peel, Inc. ....	512-263-9181
Editor.....	westlakehills@peelinc.com
Advertising.....	advertising@peelinc.com

# ADVERTISING INFO

Please support the advertisers that make the West Lake Hills Echo possible. If you are interested in advertising, please contact our sales office at 512-263-9181 or [advertising@peelinc.com](mailto:advertising@peelinc.com). The advertising deadline is the 8th of the month prior to the issue.

# ARTICLE INFO

The West Lake Hills Echo is mailed monthly to all West Lake Hills residents. Residents, community groups, churches, etc. are welcome to include information about their organizations in the newsletter. Personal news for the Stork Report, Teenage Job Seekers, recipes, special celebrations, and birthday announcements are also welcome.

To submit an article for the West Lake Hills Echo please email it to [westlakehills@peelinc.com](mailto:westlakehills@peelinc.com). The deadline is the 15th of the month prior to the issue.

**KELLY CUNNINGHAM, MD**

*Austin Ortho+Biologics*  
[www.austnorthobio.com](http://www.austnorthobio.com)

## Innovations in Orthopedic Sports Medicine & Cartilage Care

Stem Cell Therapy • Platelet-Rich Plasma • Regenerative Medicine

**Kelly Cunningham, MD**, board certified in orthopedic surgery with specialty training in sports medicine, offers two locations to better serve patients.

In addition to traditional surgical sports medicine he provides the latest treatment techniques in the evolving area of biologics & regenerative medicine.

- Enhanced recovery for sports injuries at any age
- Knee & Shoulder acute and chronic injuries
- Joint cartilage repair and restoration
- Alternatives to joint replacement surgery
- Surgical and non-surgical options

**Call Today: 512.410.0767**

Like us on Facebook  
[@KellyCunninghamMD](https://www.facebook.com/KellyCunninghamMD)

Central Austin

911 West 38th St. Suite 101

Westlake/Lake Travis

6836 Bee Cave Rd Suite 103



# New Fall and Winter Arrivals for Men and Women

## GATSBY'S

PURVEYOR OF FINE APPAREL

**Tuxedo Rentals – Onsite Tailor**

**2901 S Capital of Texas HWY**

**Austin, TX 78746**

(Located next to Nordstrom's)

**512.906.0977**

**12701 Hill Country Blvd.,**

**Bee Cave, Texas 78738**

(Next to Barnes & Nobles in the Hill Country Galleria)

**512.243.8808**

True Grit  
AG Jeans  
Vineyard Vines  
Southern Tide  
Johnnie-O  
Tommy Bahama  
Robert Graham  
Southern Marsh  
Nat Nast  
Bugatchi  
Rowdy Gentlemen  
7 For All Mankind  
Citizens of Humanity  
34 Heritage Jeans  
Johnston Murphy  
Cole Haan  
Under Armour  
Lauren James  
Hugo Boss  
Jude Connally  
Jadelynn Brooke  
Madison Creek  
Bronte  
Dylan



## Large Scale Leaf Drop

Though this is slightly after the fact, I want to address the dual events this year that initiated the highest call rates I've had in a long time. Both last March and this August, we had an inordinate amount of rain. Within two weeks to over a month after the rain had ended, I received calls from the entire central Texas area about Live Oaks dropping the vast majority of their leaves. Often the trees could be right next to some others that did not drop any leaves, causing the property owners to be very concerned about the possibility that they had oak wilt. My standard practice when receiving calls about leaf drop when it occurs after rain, is to ask what the leaves look like and if possible request a photo of five or so "suspicious-looking" leaves. Live Oak leaves that drop on account of heavy rainfall have certain characteristics: mottling, speckling, blotching all of brown or yellow and occasionally black dots. Symptomatic oak wilt leaves on the other hand are very different ([www.texasoakwilt.org/gallery/oak-wilt-in-live-oaks/](http://www.texasoakwilt.org/gallery/oak-wilt-in-live-oaks/)).

This phenomenon is caused by an extended period of "field saturation". All soil has macro and micro pores/spaces in it, whether it is sand or clay or silt. When all these pores fill up it with water – there is no air left in the soil. Tree roots actually need to breath –

even the Bald Cypress trees in the swamp send up little breathing "apparatuses", which we call "knees". So a combination of not enough air in the soil, an excessive engorgement of water by the tree which causes swelling in stem - leaf attachment, and the general toxicity of excessive water in the system all play a part in the discoloring and abscission of the leaves by the tree which is an attempt to help itself. Excessive rain, though it may cause some of your Live Oaks to drop their leaves temporarily, rarely kills them unless it is standing water over entire root zone for two weeks or more. Generally, excessive Spring rains that cause leaf drop – new leaves will form within a couple of weeks after the leaf drop. Late Summer or fall rains – the tree may just go into a premature fall dormancy and wait for next Spring to fully leaf out. It is more of a curiosity than a health threat – be reassured.

Next month we will look into the largest tree pest most of us deal with - deer.

Questions or comments this article or previous articles have generated, may be directed to me at: [kevin@arborcareandconsulting.com](mailto:kevin@arborcareandconsulting.com)



### Tim Whitten

Board Certified Family Law Attorney

812 San Antonio Street, Suite 401  
Austin, TX 78701

[www.whitten-law.com](http://www.whitten-law.com)  
[info@whitten-law.com](mailto:info@whitten-law.com)  
512.478.1011

Collaborative Divorce  
Board Certified Family Law Attorney  
25 Years Experience  
Let us help you understand your options.



### Practice Areas:

Adoption | Grandparent and Non-parental Rights | Collaborative Law  
High-Asset Divorce | Modifications of Custody, Possession, and Support





## #CompassionUp Challenge

For this month let's see how many acts of kindness we can share via social media. Use Twitter, Facebook, Google+, or Instagram.

Discover kindness in yourself, your family, your community, and your world!

When you post to social media:

1. Provide a short description of the act of kindness
2. Be sure to add #compassionup to your post; and,
3. Include the name of your neighborhood.

We'll let you know how we do!



**ADVERTISE**  
Your Business Here  
Call 512.263.9181  
for details.  
[www.peelinc.com](http://www.peelinc.com)

### STEVE'S PLUMBING REPAIR

Master License: M-39722

- Water Pressure Problems
- Sewer & Drain Service
- Fiber Optic Drain  
Line Inspections
- Free Estimates
- Satisfaction Guaranteed

**Steve Brouger**  
**512.276.7476**

2605 Buell Ave



**CCOA-STEINER RANCH**  
4308 N. Quinlan Park Rd.  
Suite 100  
Austin, TX 78732  
512.266.6130

**CCOA NORTHWEST AUSTIN**  
6507 Jester Boulevard  
Building 2  
Austin, TX 78750  
512.795.8300

**CCOA-WESTLAKE**  
8100 Bee Caves Rd  
Austin, TX 78746  
512.329.6633

## REVEAL

PORTRAITS TO INSPIRE ADOPTION

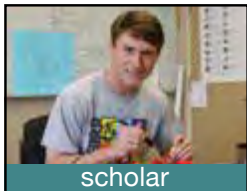
THE HEART GALLERY *of central texas*



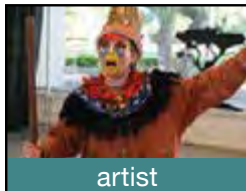
PLEASE BE OUR GUEST TO CELEBRATE THE CHILDREN IN FOSTER CARE WHO ARE WAITING FOR FOREVER FAMILIES AND THE COMMUNITY THAT SUPPORTS THEM.

THURSDAY, NOVEMBER 10<sup>TH</sup>  
6:30 - 9:00 PM

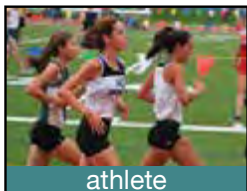
BLANTON MUSEUM OF ART, SMITH BUILDING  
COMPLIMENTARY COCKTAIL RECEPTION • BUSINESS ATTIRE



scholar



artist



athlete



servant

**Join us for open house and small group tours!**

For more information visit [www.sasaustin.org](http://www.sasaustin.org) or call  
512.299.9802 for grades K-8 or 512.299.9720 for grades 9-12.  
Lower/Middle School: 1112 W. 31st St.  
Upper School: 5901 Southwest Pkwy.  
Follow us! [facebook/sasaustin.org](https://facebook.com/sasaustin.org)



**ST. ANDREW'S**  
EPISCOPAL SCHOOL K-12



# PERSONALIZED ATTENTION

for all of your medical, surgical and cosmetic dermatological needs

## COSMETIC SKIN CARE SERVICES

### CONSULTATIONS & SERVICES

Private Consult with Dr. Bushore, MD ..... \$125

*May be applied toward treatment*

Aesthetic Practitioner ..... Complimentary

### Skin Tag/Mole and Benign Lesion Removal

..... Consultation with Dr. Bushore required

### SCAR & ANTI-AGING TREATMENTS

Laser Genesis Facial ..... \$300 / 4@ \$900 / 6@ \$1650

excel V™ Full Face Red /Brown ..... \$500 / 3@ \$1200

excel V™ Neck & Chest Red/Brown ..... \$500 / 3@ \$1200

excel V™ Hands ..... \$300 / 3@ \$750

excel V™ Spot Treatment Red/Brown ..... \$150

excel V™ Hair Removal ..... consult required

Eclipse Microneedling ..... \$500 / 3@ \$750

Eclipse PRP Microneedling ..... \$600 / 3@ \$1500

### BOTOX® | KYBELLA® AND FILLERS

Juvederm® Ultra & Ultra Plus ..... \$600 per syringe

Juvederm Voluma® ..... \$850 per syringe

Restylane® and Restylane® Silk ..... \$600 per syringe

Kybella® ..... \$1200 per single treatment

Botox® ..... \$275 for Glabella OR Crow's feet

\$475 for both / \$200 for forehead (\$150 as add on)

\$625 to treat all 3 areas

*Consult needed for pricing on other areas*

### CHEMICAL PEELS

TCA 20% ..... \$250 / 3@ \$600

Salicylic 30% ..... \$150 / 3@ \$300

Glycolic 30% ..... \$150 / 3@ \$300

Glycolic 50% ..... \$200 / 3@ \$450

Mandelic Acid "Red Carpet" Peel ..... \$150 / 3@ \$300

### LASER VEIN TREATMENTS

excel V™ Leg Veins Treatment

..... Pricing Begins at a base price of \$250

### SILKPEEL 3 DIAMOND DERMAL INFUSION FACE

Lumixyl Pro-Infusion / Hyper pigmentation

Clarity MD Pro-Infusion / Acne

Hydrating Pro-Infusion / Dry Skin

Vitamin C Pro-Infusion / Detoxification

..... all of the above \$150 / 3@ \$300

### SILKPEEL 3 DIAMOND DERMAL INFUSION BODY

Chest, Calves and Upper Arms ..... \$150 / 3@ \$300

Back, Stomach, Thighs & Buttocks ..... \$250 / 3@ \$600

Stretch Mark Therapy ..... Consultation Required



Like us @ Facebook.com/BalconesDermatologyandAesthetics

*\*For ALL Services - Customizable combination treatment plans available at at discounted price.*

*\*Prices subject to change without notice. All purchases are final.*

*Inquire for details.*

## BALCONES DERMATOLOGY & AESTHETICS

is the only medical practice in Austin to have the internationally renowned **Skin Type Solutions** skin care product system that identifies over 16 different skin types.

Dr. Bushore combines his years of medical dermatology experience along with his expert eye and artistic flair using injectables such as fillers and Botox®, in order to give patients a more refreshed look without surgery or being too obvious.

His approach is called **The Austin Natural Look™**



DAVID A. BUSHORE, M.D.

Board Certified American Board of Dermatology

Creator of The Austin Natural Look™

Owner of Balcones Dermatology & Aesthetics

(formerly Balcones Dermatology)



MARISSA K. FLEMING

Aesthetic Practitioner | CLT, LA, LSO

**HOLIDAY  
DISCOUNT**  
Mention this ad and  
receive 10% off any  
cosmetic treatment



# BALCONES

## DERMATOLOGY & AESTHETICS

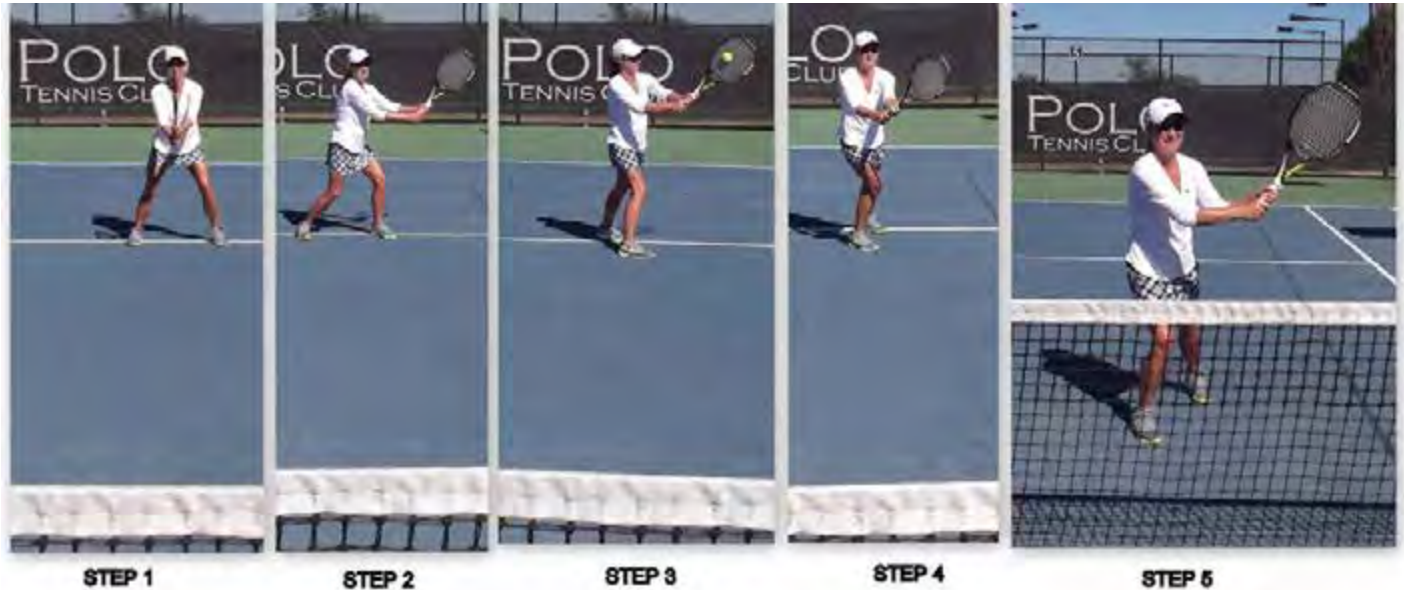
7800 N. Mopac Expressway, Suite 315 | Austin, TX 78759

512.459.4869

[www.balconesdermatology.com](http://www.balconesdermatology.com)

## TENNIS TIPS: How To Execute The Two-Handed High Backhand Volley Approach Shot

*By: USPTA/PTR Master Professional - The Polo Tennis and Fitness Club*



In previous newsletters, I offered tips on how to hit a forehand groundstroke, a two-handed backhand, one-handed backhand, forehand volley, the two handed backhand volley, the serve, the forehand half-volley, the one-handed backhand volley, the overhead “smash”, the forehand service return, the backhand service return, and the forehand high volley approach shot.

In this issue, I will offer you instructions on how to execute the two-handed backhand high approach shot. This shot is used when a player is caught in “no-person’s land” (around the service line area) and receives a high ball to volley. The important part of this shot is to be able to hit a deep volley to the feet of the opponents and/or to hit a deep volley close to the baseline, so the opponent is put in a defensive mode and hits a softer ball so the player can now move closer to the net for the “killer or placement volley”. In the illustrations, “Pancho” Edwards, a player at The Polo Tennis and Fitness Club, shows the proper technique to execute this stroke.

**Step 1: The Ready Position and Split Step:** When she realizes that she is caught in “no-person’s land”, she takes the split step by bending the knees and staying on her toes. Her racket is in the volley position and her feet are angled toward the path of the incoming ball.

**Step 2: The Back Swing:** Once she realizes that the ball has been directed to her backhand, she will turn her upper body and will take the racket slightly back. Notice that the left hand next to the right hand to allow her to keep her center of gravity in the center. She has loaded her weight on her left foot and will be ready to step forward to meet the ball. She will make a slight change toward the continental grip on both hands.

“

# EDITOR WANTED

”

Call today to find out  
how you can contribute  
to your newsletter!

**512.263.9181**

*(Continued on Page 9)*



(Continued from Page 8)

**Step 3: The Point of Contact:** She now is ready to step into the ball. She has kept her eye on the ball and her center of gravity now is shifted toward the point of contact. Notice the right toe pointing to the ball meeting the racket. The face of the racket is open to allow her to hit behind the ball and allow maximum net height and allow her to hit the ball deep. The control of the ball will be made with the left hand, which is holding the racket tighter. The right hand is more relaxed and helps keep the face of the racket in a 45-degree angle at the point of contact.

**Step 4: The Follow Through:** Once she has made contact with the ball, she finishes the follow through with her wrist laid back. Her right arm is next to her body and her eyes have shifted toward her target.

**Step 5: The Move for the Kill Volley:** As the ball is headed toward her opponent and she realizes that her shot is deep, now she moves close to the net for the put away volley. If her shot was not deep, she will decide to stay close to the service line to protect the lob over her head. By the look in her eyes and her smile, she is ready to go for the "kill volley".

*Look in the next Newsletter for: The One-Handed Backhand Volley Approach Shot*

The West Lake Hills Echo is a private publication published by Peel, Inc. It is not sanctioned by any homeowners association or organization, nor is it subject to the approval of any homeowners association or organization, nor is it intended, nor implied to replace any publication that may be published by or on behalf of any homeowners association or organization. At no time will any source be allowed to use the West Lake Hills Echo contents, or loan said contents, to others in anyway, shape or form, nor in any media, website, print, film, e-mail, electrostatic copy, fax, or etc. for the purpose of solicitation, commercial use, or any use for profit, political campaigns, or other self amplification, under penalty of law without written or expressed permission from Peel, Inc. The information in the newsletter is exclusively for the private use of Peel, Inc.

**DISCLAIMER:** Articles and ads in this newsletter express the opinions of their authors and do not necessarily reflect the opinions of Peel, Inc. or its employees. Peel, Inc. is not responsible for the accuracy of any facts stated in articles submitted by others. The publisher also assumes no responsibility for the advertising content with this publication. All warranties and representations made in the advertising content are solely that of the advertiser and any such claims regarding its content should be taken up with the advertiser.

\* The publisher assumes no liability with regard to its advertisers for misprints or failure to place advertising in this publication except for the actual cost of such advertising.

\* Although every effort is taken to avoid mistakes and/or misprints, the publisher assumes no responsibility for any errors of information or typographical mistakes, except as limited to the cost of advertising as stated above or in the case of misinformation, a printed retraction/correction.

\* Under no circumstances shall the publisher be held liable for incidental or consequential damages, inconvenience, loss of business or services, or any other liabilities from failure to publish, or from failure to publish in a timely manner, except as limited to liabilities stated above.

# NOW HIRING

## Advertising Sales Representative

**Description:** The position includes marketing our community newsletters to local and area businesses. It is a flexible position that allows you to work from home and set your own hours.

**Roles:** Stimulate new advertising accounts in our community newsletters. Maintain current accounts assigned to you by Sales Manager. Service your accounts by assisting them from ad design to final proof approval.

**Skills:** Excellent communication through email and phone, with high level presentation and relationship-building skills. Strong prospecting and business development skills are a must. Previous sales experience preferred but not required.

**Benefits:** Commission Based  
Apply by sending resume to [jobs@peelinc.com](mailto:jobs@peelinc.com)

  
**PEEL, INC.**



## PRINTING IS AN ART MAKE SOME WITH US!

Call today for more info

# 512.263.9181



[QualityPrintingOfAustin.com](http://QualityPrintingOfAustin.com)

# NATUREWATCH

## Hardy Brushfoots

by Jim and Lynne Weber

Fall and winter are hardly a notable time for watching butterflies, except for those in the Nymphalidae family known as the brush-footed or brushfoots. Most of these species are medium-sized to fairly large butterflies that hold their wings flat when resting and have a reduced pair of forelegs. This group is also commonly called four-footed butterflies, because they are known to stand on only four legs while the reduced pair are held up against their mid-section or thorax.

In some species, these shorter forelegs also have a brush-like set of soft hairs called setae, and it is unclear why these forelegs have become vestigial, or appearing to lose most of their ancestral function. One theory is that these forelegs may be used to amplify the sense of smell (yes, many butterflies 'taste' with their feet), while others believe they are used to improve signaling and communication between individuals of the same species, while standing on the other four. The latter seems to be the leading theory so far, as that ability would prove most useful in terms of reproduction and the continuing overall health of the species.

More remarkably, brushfoots are experts at overwintering, or the process by which they pass through or wait out the winter season. While many insects overwinter as eggs or pupae, brushfoots overwinter as adult butterflies. They take cover in places such as building crevices, under loose bark, or beneath fallen leaves or other plant matter. These places shield the brushfoots from the adverse conditions of winter, and their activity ceases until conditions become more favorable. On the occasional warm winter day in Central Texas, these butterflies often emerge to bask in the sun and feed on various nutritional sources such as tree sap, rotting fruit, or animal scat. While many brushfoots are brightly colored on their uppersides, their undersides are largely dull and cryptic, mimicking dead leaves and bark, offering them additional protection in their chosen overwintering sites.

Examples of the most frequently encountered and easily recognizable brushfoots in our area include the Question Mark (*Polygonia interrogationis*), Red Admiral (*Vanessa atalanta*), and Common Buckeye (*Junonia coenia*). The Question Mark is fairly common in woodland openings, and is recognized by its deep orange wings spotted with brown and angled sharply at the edges. Its cryptic underside is textured brown, resembling a dead leaf, and its hind wing is 'punctuated' by a curved silver line and dot, which gives it its common name. Red Admirals are almost unmistakable, dark above with bright orange-red slashes and white dots on the outer part of the forewings, but exquisitely colored in mostly browns and blues below. The Common Buckeye prefers open habitats, and can

be identified by its overall golden brown color above, interrupted by large and striking multicolored eyespots.

The next time the weather is sunny and warmer, make a point to go outside and take a walk in the woods, a field or your garden, and see if you can find some of these hardy brushfoots!

Send your nature-related questions to [naturewatch@austin.rr.com](mailto:naturewatch@austin.rr.com) and we'll do our best to answer them. If you enjoy reading these articles, check out our book, *Nature Watch Austin* (published by Texas A&M University Press), and our blog at [naturewatchaustin.blogspot.com](http://naturewatchaustin.blogspot.com).



Top: Question Mark  
Bottom: Common Buckeye







## Attention KIDS: Send Us Your Masterpiece!

Color the drawing below and mail the finished artwork to us at:

Peel, Inc. - Kids Club, 308 Meadowlark St, Lakeway, TX 78734-4717

We will select the top few and post their artwork on our Facebook Page - [Facebook.com/PeelInc](https://www.facebook.com/PeelInc).

DUE: November 30th

Be sure to include the following so we  
can let you know!

Name: \_\_\_\_\_

(first name, last initial)

Age: \_\_\_\_\_



Have A  
Happy  
Thanksgiving!

WES



**PEEL, INC.**

308 Meadowlark St. South  
Lakeway, TX 78734

PRSR STD  
U.S. POSTAGE  
PAID  
PEEL, INC.

WES



**BERKSHIRE  
HATHAWAY**  
HomeServices  
**Texas Realty**

**KENT  
REDDING**



Berkshire Hathaway Texas Realty 2008-2016 #1 Top Sales  
www.CallKent.com | Twitter: @HomesInAustin

**Purpose DRIVEN • Passion LED • People FOCUSED**



### **Lost Creek | City View | Eanes**

Absolutely stunning Eanes custom home with amazing downtown and Capital views. Situated perfectly on a lushly landscaped, flat cul-de-sac lot, this home features 1000+SF of outdoor entertaining space. Very well maintained by meticulous owners and showcasing tile roof, Anderson windows, fine hardwood flooring, three fireplaces, tall ceilings and updated Chefs dream kitchen. All this plus 10 minutes to downtown, low taxes, highly desirable Lost Creek neighborhood and easy access to schools, shopping and dining.

5 Bed | 4.5 Bath | 2 Car Garage  
4,142 Sqft | .25 Acres | \$869,000

1301 Arronimink Circle

**www.DowntownAustinView.com Call/Text 512•797•5737**