



BEE CAVE *Messenger*

VOLUME 7, ISSUE 12

DECEMBER 2016

NEWSLETTER FOR THE RESIDENTS OF THE BEE CAVE AREA



follow us on
facebook

[Facebook.com/BeeCaveMessenger](https://www.facebook.com/BeeCaveMessenger)



Final Phase Now Selling!

LAST OPPORTUNITY TO PICK YOUR LOT!



Just minutes from the Hill Country Galleria, Whole Foods, hospitals and entertainment venues. Nestled in an expansive setting of rolling hills and surrounded on two sides by 300 acres of natural habitat, Rocky Creek is one of the most breathtaking communities in Austin's Hill Country. The perfect place to call home, Rocky Creek is located in the exemplary lake Travis ISD and offers its residents a resort lifestyle with a pool, playground and 7.5 miles of hike and bike trails.

Completed Homes Available Now!

Priced low 500's-900's

Visit the Drees Model and Mention This Ad to Receive a Free Gift

Bill Cozart
Market Manager
512-789-5586
bcozart@dreeshomes.com

Nicole Peel
Sales Assistant
512-740-2300
npeel@dreeshomes.com



*Receive a free gift at Rocky Creek model between December 1 and December 31, 2016. Quick move in offers and gift subject to change or withdrawal without notice. Offer restrictions may apply. See a Drees Market Manager for complete details.

Quick Move In



5 BD | 4.5 BTH | 4,564 Sq. Ft.



4 BD | 3.5 BTH | 3,316 Sq. Ft.



5 BD | 4.5 BTH | 4,670 Sq. Ft.



Directions to Rocky Creek:
West on Hwy. 71, left on Hamilton Pool Rd
Drees model located at 17005 Rush Pea Circle

On the Cover

Santa has arrived in Bee Cave! Meet & greets with Santa are complimentary at the Hill Country Galleria. Check his schedule and find out where he will be located when you visit:

www.HillCountryGalleria.com

Bee Cave Community Events

Hill Country Galleria Holiday Wine Walk
Explore retailers at the Galleria while you shop n' sip
Thursday, December 8th 5:00 P.M. – 9:00 P.M.

Start at Twin Liquors at the Hill Country Galleria to pick up a

Wine Walk Map

(512) 263-0001

www.hillcountrygalleria.com

Bee Cave Library News and Events

BOOK CLUB

Thursday, January 12th 7:00 P.M.

January Book: Ender's Game, by Orson Scott Card

No cost, welcome new members

STORY TIME

Preschool Pals Storytime, Thursdays at 10:30 A.M. & 11:15 A.M.

Toddler Tales Storytime, Fridays at 10:30 A.M. & 11:15 A.M.

Free admission

WHAT'S FOR LUNCH?

Every First Wednesday – January 4th 12:00 P.M. – 1:00 P.M.

January theme is Japanese New Year with a live traditional music & cultural presentation. No RSVP necessary. Lunch provided, or bring your own. A \$5 donation is welcome!

Bee Cave Public Library

4000 Galleria Parkway

(512) 767-6626

www.beecavetexas.com



IMPORTANT NUMBERS

EMERGENCY NUMBERS

EMERGENCY	911
Fire.....	911
Ambulance.....	911
Police Department	512-314-7590
Sheriff – Non-Emergency.....	512-974-0845
Travis County ESD No.6/Lake Travis Fire Rescue	
Administration Office.....	512-266-2533
Travis County Animal Control.....	512-972-6060

SCHOOLS

Lake Travis ISD	512-533-6000
Lake Travis High School.....	512-533-6100
Lake Travis Middle School.....	512-533-6200
Lake Travis Elementary.....	512-533-6300
Hudson Bend Middle School	512-533-6400
Lake Pointe Elementary.....	512-533-6500
Lakeway Elementary	512-533-6350
Serene Hills Elementary	512-533-7400
Bee Cave Elementary.....	512-533-6250
West Cypress Elementary	512-533-7500

UTILITIES

Travis County WCID # 17.....	512-266-1111
Lakeway MUD	512-261-6222
Hurst Creek MUD.....	512-261-6281
Austin Energy	512-322-9100
Pedernales Electric.....	888-554-4732
Texas Gas Service	
Custom Service.....	1-800-700-2443
Emergencies.....	512-370-8609
Call Before You Dig.....	512-472-2822
AT&T	
New Service.....	1-800-464-7928
Repair.....	1-800-246-8464
Billing.....	1-800-858-7928
Time Warner Cable	
Customer Service.....	512-485-5555
Repairs.....	512-485-5080
Austin/Travis County Hazardous Waste	512-974-4343

OTHER NUMBERS

Bee Cave City Hall.....	512-767-6600
Bee Cave Library	512-767-6620
Municipal Court	512-767-6630
Lake Travis Postal Office.....	512-263-2458
Baylor Scott & White Medical Center.....	512-571-5000
City of Bee Cave	www.beecavetexas.com

NEWSLETTER PUBLISHER

Peel, Inc.	512-263-9181
Editor.....	beecave@peelinc.com
Advertising.....	advertising@peelinc.com

Around Bee Cave

Friends of the Bee Cave Library Invites You

Submitted by Elena Reid

We'd like to have you as a Friend! Joining the Friends is as simple as getting an email once a month about what the Friends are doing to support BCPL through fundraising, advocacy and volunteering. There are lots of ways to help, and you can choose what fits your schedule and interests. Check out the Friends website <https://friendsofbeevelibrary.org/> or come to our next meeting on Wednesday, December 14th at 4:00 p.m. and see what we're all about.



Bee Cave Public Library Hosts Charity Knit-In Again

Bee Cave Public Library is again participating in “#25000 Tuques,” the global charity project to collect hand-knitted hats to send with warm wishes to Syrian refugees arriving in Canada this winter. The project began last year when local knitting groups in Canada wanted to provide a warm welcome to the first wave of people arriving on their shores “because in Quebec, the only true enemy is the cold,” according to the #25000 Tuques website. When Bee Cave Public Services Manager Cate Sweeney learned of the project, she turned to the library’s Knitting Club and soon had the wider community involved. The library collected a total of 500 hats from library patrons, knitting club members, area churches, and local teens, and shipped them to Newfoundland, Canada where they were distributed to the refugee families relocating to North America. Sweeney was interviewed on Canadian radio to tell her story of how knitters in Bee Cave, Texas got involved, and the story was published by CBC News. Newfoundland organizers forwarded photographs of the refugees receiving the hats from Bee Cave, which brought warm feelings full circle back to Texas.

(Continued on Page 5)

Clavier-Werke School of Music

Discover the benefits of music lessons in a school environment.

Clavier-Werke students are encouraged to reach their highest potential through performance, practice and dedication.

There's a reason why we've been in business for over 20 years!

Piano * Guitar * Voice
Violin * Viola * Cello
Composition * Theory

Call today for a free trial lesson!



Two Convenient Locations

West Lake Hills

1000 Westbank Dr., 6a
West Lake Hills, Tx 78746

(512) 328-5777

Southwest Austin

5900 W. Slaughter Ln., D525
Austin, Tx 78749

(512) 288-7664

www.clavierwerke.com

(Continued from Page 4)

With winter upon us again, Sweeney reached out to her contact at the Association for New Canadians and learned that hundreds of hats were still needed in Newfoundland and other communities for refugees continuing to adapt to life in the north. The Bee Cave library is again mobilizing local knitters to get involved to “send some Texas warmth” to our friends in Canada. There are several ways to get involved. The library is collecting hand-knitted hats from November 1st through December 30th, and welcomes contributions of heavy, wool-blend yarn, or cash to defray shipping costs.

On Thursday, December 1st from 7:00 – 9:00 p.m., there will be a “Knit-In” at the library again. The public is invited to bring their own supplies or use some the library provides and see how many hats can be completed in one evening. For those who don’t know how to knit or crochet, the library has easy-to-use hat looms (available for checkout from the library with instructions). Pre-made note cards will also be available to record warm wishes and attach to the hats. In January, the Friends of Bee Cave Library will sort and pack the hats, and ship them to Canada for distribution. For more information, contact Cate Sweeney at csweeney@beecavetexas.gov, or visit the library website at <http://www.beecavetexas.gov/city-government/library>.



Bee Cave teen Ashley Londa packs a monkey hat donated to the cause for shipment to Canada.



Friends of the Library members Vicky Haas and Kathleen Young sort hats and attach cards.



Syrians receiving hats: Our contact in Newfoundland sent this photo of the day the hats were distributed to the refugees.



Refugee child in Newfoundland tries on a hat from Bee Cave

Around Bee Cave

Lake Travis High School Choir Invites You to Their Winter Holiday Concert

The award winning Lake Travis High School Choir would like to invite you and your family to their Winter Holiday Concert, Friday December 2nd. Come enjoy beautiful music that will put you in the holiday spirit, fun for the whole family! The concert begins at 7pm, admission is free, and takes place in the LTHS performing Arts Center.

Additionally, they would like to congratulate it's 2016-2017 All Region Choir Students. These students practiced for months prior to their audition and made the select riongal choir through blind audition.



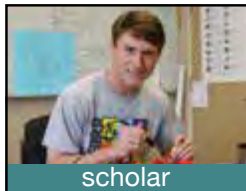
The 2016-2017 Choir Officers are Front Row: Sarah Mann, Tyller Garza, Alaska Coombes, Avery Goodwin, Kelly Hearn
Back Row: Reagan Westberry, Jackie Lowy, Julianne Lowy, Jade Milam, Mary Martindale, Alison Miller, Jessica Askey



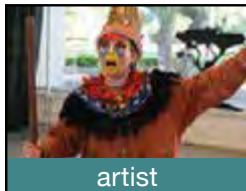
Region (L to R...by row):

Zoe Arora, Sarah Henry, Sophia Boyer, Zac Hrnair, Sarah Mann, Avery Goodwin, Tyller Garza, Emily Aaron, Kate Senter, Molly Snodgrass, Amanda Maldonado, Mason Tabb, Alaska Coombes, Jackie Lowy, Jade Milam, Abigail Storm, Hawkins Burns, Houston Burns, Wes King, Zachary Edwards, Dante Kokoszka

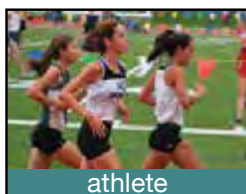
Not pictured: Kelly Hearn & Olivia Kingsfield



scholar



artist



athlete



servant

Join us for open house and small group tours!

For more information visit www.sasaustin.org or call 512.299.9802 for grades K-8 or 512.299.9720 for grades 9-12.
Lower/Middle School: 1112 W. 31st St.
Upper School: 5901 Southwest Pkwy.
Follow us! [facebook/sasaustin.org](https://facebook.com/sasaustin.org)



ST. ANDREW'S
EPISCOPAL SCHOOL K-12

Up Coming Meetings

Bee Cave City Council
Tuesday, December 13th 6:00 P.M.
Bee Cave City Hall
4000 Galleria Parkway
(512) 767-6600
www.beecavetexas.com
Open to the public

Bee Cave Chamber of Commerce
December General Meeting – Holiday Party & Networking
Wednesday, December 14th 5:00 P.M.-7:00 P.M.

Sonesta Bee Cave Hotel's roof-top bar, Meridian 98
12525 Bee Cave Parkway
(512) 256-4004
www.beecavechamberofcommerce.com
Free for members and guests

Bee Cave Chamber of Commerce

Ribbon Cutting:

Hill Country Galleria's Central Plaza
Saturday, December 17th 3pm-5pm
Join the Chamber and Mayor Pro Tem Goodwin as they cut the ribbon on the all new Central Plaza in the heart of the Hill Country Galleria. Enjoy holiday music & the first viewing of the synchronized Christmas Tree!
12700 Hill Country Blvd.
Bee Cave, TX 78738

The Bee Cave Chamber of Commerce is currently accepting new members. Please visit www.beecavechamberofcommerce.com to find out more.

STEVE'S PLUMBING REPAIR

Master License: M-39722

- Water Pressure Problems
- Sewer & Drain Service
- Fiber Optic Drain Line Inspections
- Free Estimates
- Satisfaction Guaranteed

Steve Brougher
512.276.7476



2605 Buell Ave

HOLIDAY SALE

A Gift for Every Rider

Bring holiday cheer to the riders on your list with our special selection of bikes, apparel, and accessories on sale now.



Plus, use this coupon for
20% OFF
Any One Full-Price Item

Coupon must be presented at time of purchase. Offer does not include bikes. Can't be combined with other offers. Not valid on prior purchases. Not redeemable for gift card purchases. Limit one per customer. Expires 12/18/16.



BICYCLESPORTSHOP.COM
5 Locations Serving Austin

Celebrate The Season At Lakeway's Big Band Bash

A swinging time may be enjoyed with one of the best big bands in Central Texas, a large dance floor in an air conditioned ballroom, tables available for your own treats (e.g., champagne and caviar), at a place where you may invite your friends without the hassle of reservations. Do this in the ballroom of the Lakeway Activity Center (105 Cross Creek). The Lakeway Big Band Bash is on the second Monday of each month, from 8 to 10 p.m. Monday, December 12, 2016, is the next event. Admission is free (donations to the band are encouraged).


Kent Dugan's 17-piece orchestra, The Republic of Texas Band, features well known singers (and Lakeway residents) David Cummings and Lisa Clark. This band consistently appeals to dancers of many generations. Expect to hear a wide variety of favorite tunes, mostly from the Sinatra era, with fresh arrangements.

"Let the increasing number of restaurants in Lakeway make your evening complete. Have dinner out and go dancing at the Bash at

8 p.m.," suggests Fred Newton, Lakeway Arts Committee chairman.

For more information, call the Lakeway Activity Center at 512-261-1010.





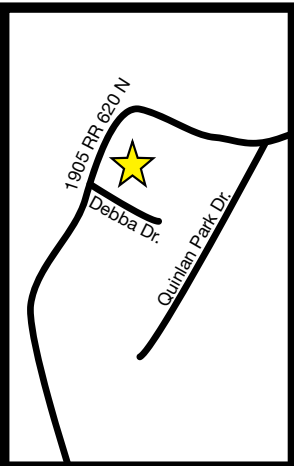
FREE
YOUR CHOICE OF
1 Color Sample

Good at all locations. One coupon per customer.
Must present coupon. Expires 1/31/17

25% OFF*
Paints and Stains

*Retail sales only. Discount taken off full retail price. Must present coupon. Good at all locations.
Expires 1/31/17

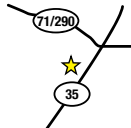
Painting Supplies • Faux Supplies • Clean "Green" Products • Sikkens Deck Stain • Expert Color Matching • Concrete Stain




Benjamin Moore®
Paint like no other.™

Come see us at our Lakeway location!

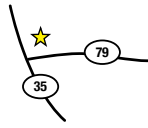
1905 RR 620 N. Lakeway, 78734 • 512-249-9119 • www.roosterspaint.com



South Austin
5501 S Congress Ave., 78745
512-444-6869



ROOSTERS
PAINT CENTER



Round Rock
308 West Palm Valley Blvd., 78664
512-388-5600

Hours: Monday - Friday 7:30am - 5:30pm • Saturday 8:30am - 3pm • Sunday Closed

Linda Gail Lewis Performs Dec. 9 at Spicewood Vineyards



Linda Gail Lewis will bring her rollicking blend of country rock to the Spicewood Vineyards Dec. 9 when the Spicewood Arts Society presents its second concert of the season, beginning at 7 p.m.

Lewis' 50-plus years of musical experience began by singing in a little country church in Louisiana with her

brother, Jerry Lee Lewis. As Jerry Lee shot to fame, he took Linda along on his tours, where she opened shows and sang backup

vocals. The two recorded an album of duets, "Together" in 1969 that launched a top ten country single, "Don't Let Me Cross Over."

At age 40, Linda struck out on her own, teaching herself boogie piano in Jerry Lee's style, eventually collaborating with Irish singer/songwriter Van Morrison and producing a duet album, "You Win Again."

She became an international success, keeping a home in Wales. Now an Austinite, she's been turning out music that celebrates her own unique talents, including a Christmas album with Jerry Deerwood, "Rockin' Christmas."

The Christmas album and her latest work will be sold at the concert. The Spicewood Vineyards Event Center is at 1419 Co. Rd. 409, Spicewood, TX. Tickets include light refreshments at intermission. Wine is available for purchase.

This concert is included in season tickets. Individual tickets are \$50 each. To purchase, go to www.spicewoodarts.org. For more information, call 512-264-2820 or visit the website.

SPRING Blossoms at HOME

You Asked for a Different Approach to Assisted Living & Memory Care, We Listened.

The Harbor at Lakeway
Assisted Living & Memory Care

Call or come by to see us Today!

24/7 Wellness Care on site • 24/7 Licensed Nurse on site
Housekeeping w/ linen & towel service • Personal laundry
Individually owned & Operated locally.

No buy in! No long term lease! Month to Month agreements!
Environment and activities tailored for your loved one
Dementia specific activity program available
Beauty and Barber Salon Plus a Movie Theater & Heated Pool!

The Harbor
at Lakeway
Assisted Living and Memory Care Community

Locally owned & operated.
...It Can Be Different...
www.harboratlakeway.com
512-402-1222 • 300 Medical
Parkway, Lakeway Texas 78738

License #142241
Alzheimer's Certification #103438

next door to Lakeway Regional Hospital

Tam Cummings
UNTANGLING DEMENTIA

Staff training provided by nationally recognized Dementia specialist
Dr. Tam Cummings, Author of Untangling Alzheimer's.



"In this season of Thanksgiving and celebrating the gift of hope for the world at Christmas, Partners in Hope would like to thank everyone who has participated in and supported our efforts during 2016. Neighbors like you make all the difference! Thank you and may you recognize God's blessings during this season."



Visit us at www.partnersinhopelaketexas.org

Around Bee Cave

What is that on Bee Cave Parkway?

It is Hill Country Indoor Sports and Fitness

Hill Country Indoor Sports and Fitness will be a unique state-of-the-art facility offering elite training, sports leagues, boutique fitness, and family-friendly activities all under one roof slated to be open in late Spring of 2017.

The multi-level 140,000-square foot commodity will offer services for every level of sports and fitness enthusiast, and aims to be a gathering place where the community will come to be active, healthy and have fun.

The entire ground level of the facility will be open to the public and will be home to recreational league play for both youth and adults in a variety of team sports including basketball, volleyball, soccer, lacrosse, football and baseball. Select level league play will take place in Basketball under the direction of Luke Axtell and in Volleyball under Allie Roseberry with Texas Eclipse Volleyball. Camps, clinics and individual lessons will round out the sport offerings.

Private members of HCI will have access to second floor amenities including a sophisticated private fitness gym, high quality group classes and an elevated walking and jogging track system with picturesque views of the surrounding Hill Country.

Some of the many amenities include:

- Country club atmosphere including well-designed showers and changing areas
- 15,000+sq foot Strength & Conditioning Gym featuring cardio equipment, resistance training machines, and a free weight area
- Private classrooms for yoga, pilates, spin and other group exercise lead by former Rockette and Dancers Shape fitness studio owner, Jennifer McCamish
- Sports Performance Training by Driven Sports Performance with Andy Twellman and Matt Herring
- Batting cages
- 4 – High School Basketball Courts // convertible to 8 full sized Volleyball Courts.
- A large turf playing field (185 x 85)
- Healthy menu options within the 4,000 sq foot Concession area
- Family Entertainment Center
- Party and conference rooms

For more information on memberships, training, or leagues, contact: info@hillcountryindoor.com

Follow us for updates on progress, events, and more, on Facebook (@HillCountryIndoor) and on Instagram & Twitter (@hcindoor)

Website: www.hillcountryindoor.com/



NOW ENROLLING
childrenscenterofaustin.com

The Children's Center Of Austin 

CCOA-STEINER RANCH 4308 N. Quinlan Park Rd. Suite 100 Austin, TX 78732 512.266.6130	CCOA NORTHWEST AUSTIN 6507 Jester Boulevard Building 2 Austin, TX 78750 512.795.8300	CCOA-WESTLAKE 8100 Bee Caves Rd Austin, TX 78746 512.329.6633
--	---	---

WICD 17 News - Fat-Free Wastewater System

How to Prevent Fats, Oils, and Greases from Damaging Your Home and the Environment

Fats, oil, and greases are not just bad for your arteries and your waistline; they are bad for the wastewater system, too. Wastewater overflows and backups can cause health hazards, damage home interiors and threaten the environment. A common cause of overflow is collection pipe blockage by grease. Grease gets into the pipe from household drains as well as from poorly maintained grease traps in restaurants. WCID 17 has a firm grease trap maintenance program for restaurants to follow. This article is for you, our residential customers, to help reduce any grease load you can prevent.

Most everyone knows grease is the byproduct of cooking. Grease is found in such things as:

- Meat fats;
- Lard;
- Cooking oil;
- Shortening;
- Butter and margarine;
- Food scraps;
- Baking goods;
- Sauces, gravies; and
- Dairy products.

Too often, grease is washed into the plumbing system, usually through the kitchen sink. Grease sticks to the insides of collection pipes (both on your property and in the streets.) Over time, the grease can build up and block the entire pipe.

The myth that home garbage disposals keep grease out of the plumbing system is just that, a myth. These units only shred solid material into smaller pieces and do not prevent grease from going down the drain. Commercial additives, including detergents that claim to dissolve grease, just pass grease on down the line to cause problems there. Some results can be:

- Raw wastewater overflowing in your home or your neighbor's home;
- An expensive and unpleasant cleanup that you must pay for;
- Raw wastewater overflowing into yards, streets and parks;
- Potential contact with disease-causing organisms; and
- Operation and maintenance costs for WCID 17 which could cause higher bills for you.

The easiest way to solve the grease problem and help prevent overflows of raw wastewater is to keep this material out of the system

(Continued on Page 12)

2 FITNESS OPTIONS DEPENDING ON YOUR GOALS

Beat the New Year and Join Before Christmas



CROSSFIT HIVE

CrossFit begins with a **belief in fitness**. The aim of CrossFit is to forge a broad, general and inclusive fitness. We have sought to build a program that will best prepare trainees for any physical contingency — not only for the unknown, but for the unknowable. CrossFit is also the community that spontaneously arises when people do these workouts together. In fact, the communal aspect of CrossFit is a key component of why it's so effective.

www.CrossFitHive.com

512.296.0141

RUSH
FITNESS TRAINING

DON'T YOU LOVE A RUSH?

If you like to sweat and work every muscle of your body, this is the workout for you. No barbells, no standing around, this is HIGH impact, HIGH intensity, all over fitness.

www.rushfitnessstraining.com

512.789.4364



Mention this ad and receive one FREE class



Around Bee Cave

(Continued from Page 11)

in the first place. If you don't start putting grease in the drains, you won't have to stop!

- Never pour grease down sink drains or into toilets.
- Scrape grease and food scraps from cooking surfaces into the trash for disposal. Hot grease can cool in a can first.
- Do not put grease down garbage disposals. Do not put meat scraps down garbage disposals. Put baskets in sink drains to catch food scraps and other solids.
- Speak with your family and neighbors about the problem of grease in the wastewater system and how to keep it out.

GREASE: SCRAPE IT, WIPE IT, AND TRASH IT!



SUDOKU

View answers online at www.peelinc.com

				3	7			
						1		
1					9			3
			7			8	2	
	3	6				5		
					2		1	6
	6							1
	2		5				8	
7		5				4		

The goal is to fill in the grid so that every row, every column, and every 3x3 box contains the digits 1 through 9. Each digit may appear only once in each row, each column, and each 3x3 box.

© 2006, Feature Exchange



Home sweet BRAND NEW *home!*



**Now taking reservations. Visit our Information Center at The Executive Suites at Flintrock
2802 Flintrock Trace, Suite 212 & 216 | Lakeway, TX 78738**

LakeTravisIndependentLiving.com | 302 Medical Parkway | Lakeway, TX | (512) 879-1367
A SPECTRUM RETIREMENT COMMUNITY

RETIRE BETTER CREATIVE INDEXING

WITH JOSH STIVERS

It's the most wonderful time of the year! Not only does that mean mistletoe and Silent Night, but also that it's time to make sure our portfolios are ready to ring in the New Year.

Much of the uncertainty that has plagued economic markets for the entire year is now dissipating. We know who the next president will be, we can expect interest rates to rise next year, and we know how our portfolios have performed.

Many people have benefitted from the 7 year old bull market. We have seen many people's investments achieve their highest values ever.

So what do you do now? How do you insure your profits for the future?

As you know, I am a big fan of utilizing index funds in our portfolio allocations. There are two primary reasons I feel this way. First, index funds are super-efficient to own as their cost of ownership is far lower than utilizing a managed portfolio strategy. Second, many index funds have performed better over time than their professionally managed counterparts.

But, here's the thing. As the stock market continued to hit new highs this year, we must begin to think about the fact that this may not go on forever. It is possible the market could have some pretty drastic valleys over the next several years.

A strong argument can be made that it might be time to take a portion of your current assets invested in stocks and mutual funds and protect them from future negative volatility. If only

we had an accurate prediction of how things will perform in the future.

Have you ever purchased an investment that lost money over the course of the year and then wished you could go back and purchase it at today's value instead?

This is where our creative indexing strategies make a lot of sense. Did you know it is possible to invest in index funds inside of fixed asset accounts? These accounts still grow based on the upward movements of the markets, but, if we head into a negative year, you are protected from losses. Then, at the end of the period, you have the ability to "re-buy" at the current levels.

Being that hindsight is almost always 20/20, these strategies allow us to continue to participate in the market if we move into year 8 of the bull market, but if not we can rebalance things again next year without risk of losing any principal.

Depending on how you set these accounts up, there can be additional tax benefits to these strategies as well.

This opportunistically conservative approach has helped many of our clients over the years achieve relatively decent returns without the headaches of paying active managers and experiencing market volatility.

I would be happy to visit with you further about whether these creative indexing strategies might be a fit in your unique situation. Feel free to give me a call or email retirebetter@platinumwealthadvisory.com.

512.369.3817

www.PlatinumWealthAdvisory.com

2806 Flintrock Trace, Ste. A203
Lakeway, TX 78738


PLATINUM WEALTH
ADVISORY



JOSH STIVERS

RETIREBETTER@PLATINUMWEALTHADVISORY.COM



Securities offered through GF Investment Services, LLC. Member FINRA/
SIPC. Investment Advisory Services offered through Global Financial
Private Capital, LLC, an SEC Registered Investment Adviser.



Business Section

The Bee Cave Messenger is a private publication published by Peel, Inc. It is not sanctioned by any homeowners association or organization, nor is it subject to the approval of any homeowners association or organization, nor is it intended, nor implied to replace any publication that may be published by or on behalf of any homeowners association or organization. At no time will any source be allowed to use the Bee Cave Messenger contents, or loan said contents, to others in any way, shape or form, nor in any media, website, print, film, e-mail, electrostatic copy, fax, or etc. for the purpose of solicitation, commercial use, or any use for profit, political campaigns, or other self amplification, under penalty of law without written or expressed permission from Peel, Inc. The information in the newsletter is exclusively for the private use of Peel, Inc.

DISCLAIMER: Articles and ads in this newsletter express the opinions of their authors and do not necessarily reflect the opinions of Peel, Inc. or its employees. Peel, Inc. is not responsible for the accuracy of any facts stated in articles submitted by others. The publisher also assumes no responsibility for the advertising content with this publication. All warranties and representations made in the advertising content are solely that of the advertiser and any such claims regarding its content should be taken up with the advertiser.

* The publisher assumes no liability with regard to its advertisers for misprints or failure to place advertising in this publication except for the actual cost of such advertising.

* Although every effort is taken to avoid mistakes and/or misprints, the publisher assumes no responsibility for any errors of information or typographical mistakes, except as limited to the cost of advertising as stated above or in the case of misinformation, a printed retraction/correction.

* Under no circumstances shall the publisher be held liable for incidental or consequential damages, inconvenience, loss of business or services, or any other liabilities from failure to publish, or from failure to publish in a timely manner, except as limited to liabilities stated above.

NOW HIRING

Advertising Sales Representative

Description: The position includes marketing our community newsletters to local and area businesses. It is a flexible position that allows you to work from home and set your own hours.

Roles: Stimulate new advertising accounts in our community newsletters. Maintain current accounts assigned to you by Sales Manager. Service your accounts by assisting them from ad design to final proof approval.

Skills: Excellent communication through email and phone, with high level presentation and relationship-building skills. Strong prospecting and business development skills are a must. Previous sales experience preferred but not required.

Benefits: Commission Based
Apply by sending resume to jobs@peelinc.com



PEEL, INC.

NOT AVAILABLE
ONLINE

BUSINESS CLASSIFIEDS

SPEEDY STOP IS NOW HIRING. FULL AND PART TIME CUSTOMER AND FOOD SERVICE For our location at the corner of Hwy 71 & FM 620 in Bee Cave, TX. We offer \$11-12/hour, paid vacation/sick/personal time, medical, dental, vision, life insurance, company matched 401K, college or vocational tuition reimbursement program, and excellent opportunities for advancement. Apply Today!!

Classified Ads

Business classifieds (offering a service or product line for profit) are \$65, limit 40 words, please contact Peel, Inc. Sales Office at 512-263-9181 or advertising@PEELinc.com.

High Cotton

home & design

*Furniture, window coverings, bedding,
lighting, gifts, and design center*



photos by Leandra Blei Photography



Boutique style furniture store and design center fit for all customers on the spectrum: whether it be those who are looking for a specialty piece to complete a room, a complete top to bottom turnkey ready home redesign or anything in between. In addition to our interior design services, we feature over 100 manufacturers in furniture, bedding, rugs, lighting and accessories as well as vintage one of a kind pieces.

10827 W US HWY 290 Suite 110 Austin TX, 78736 • 512-296-2423

www.highcottonhomedesign.com



PEEL, INC.

308 Meadowlark St. South
Lakeway, TX 78734

PRSR STD
U.S. POSTAGE
PAID
PEEL, INC.

BEE



GATSBY'S
PURVEYOR OF FINE APPAREL

Tuxedo Rentals – Onsite Tailor

True Grit
AG Jeans
Vineyard Vines
Southern Tide
Johnnie-O
Tommy Bahama
Robert Graham
Southern Marsh
Nat Nast
Bugatchi
Rowdy Gentlemen
7 For All Mankind
Citizens of Humanity
34 Heritage Jeans
Johnston Murphy
Cole Haan
Under Armour
Lauren James
Hugo Boss
Jude Connally
Jadelynn Brooke
Madison Creek
Bronte
Dylan

2901 S Capital of Texas HWY
Austin, TX 78746
(Located next to Nordstrom's)
512.906.0977

12701 Hill Country Blvd.,
Bee Cave, Texas 78738
(Next to Barnes & Nobles in the
Hill Country Galleria)
512.243.8808

**TIS THE SEASON OF
LOVE AND LAUGHTER**

