

WILLOW POINTE

Official Publication of the Willow Pointe Homeowners Association, Inc.

PRESIDENT'S MESSAGE

By Scott Ward

One Call Now Service

Did you know that there is a way to keep up with the events going on in Willow Pointe? From crime in the area to community events, we use the services of "One Call Now" to pass this information on to Homeowners. We currently have over 150 homes signed on to this service that allows us to fulfill our responsibility of protecting, informing, and engaging you in matters that involve our Community.

If you want to be added to the list, here is what we need is:

Your name...First and Last

Your Address

ONE phone number

Email the above information to wphoa.board@willowpointe.org. We will email you back when registration is done and how to complete the process.

PREPARING YOUR LAWN FOR SPRING

A healthy lawn has less need for water and will save the district and you money. Here are a few tips to help you on your way.

In just a few weeks, spring will be returning to Houston. In Southeast Texas, spring occurs after the last frost. According to the U.S. Department of Agriculture, the last frost date will happen sometime between February 19 and March 13.

St. Augustine and Bermuda grass lawns are still dormant this time of year, but that doesn't mean you can't take some positive actions to have healthy lawns in the coming warm months.

Apply an organic, pre-emergence herbicide.

Corn gluten has been proven to be an effective pre-emergence herbicide. It's organic, won't harm your lawn, and will do a good job on preventing weed seeds from germinating. It generally comes in a granule form. Spread it on your lawn and water it in with a hose.

Get your soil tested.

(Continued on Page 2)

Willow Pointe Community Calendar

March 2017

March 2

Texas Independence Day

March 3

Go Texan Day

March 6

Landscape Committee Meeting @ 6:30pm

March 11

Walk the bayou and pick up trash
Meet @ the Willow Crossing Bridge @ 8am

March 12

Daylight Savings Time (Spring Forward)

March 12-16

CFISD Holiday

March 17

St. Patrick's Day

March 21

Board Meeting @ 6:30pm

All meetings are held in the pool meeting room. All Homeowners are welcome to attend any of the above meetings. Please call Randall Management to be placed on the agenda if you would like to address the Board at the meeting.

MUD Meeting Information – The normal date/time is 11:00 am the third Thursday of the month at the offices of Attorneys Young and Brooks. The address is 10000 Memorial Drive, Suite 260.

Willow Pointe

IMPORTANT NUMBERS

Emergency	911
Sheriff's Department.....	713-221-6000
Sheriff's Department (Business)	281-290-2100
Fire Department (Non-Emergency).....	713-466-6161
Vacation Watch	281-290-2100
Poison Control Center	800-222-1222
Animal Control.....	281-999-3191
Commissioner, Precinct 4.....	281-353-8424
Willow Place Post Office	281-890-2392
Entex Gas.....	713-659-2111
Centerpoint Energy (Power Outages Only)	713-207-2222
WCA -	
Garbage & Recycle.....	281-368-8397
Recycle/Hazardous Waste Disposal.....	281-560-6200
West Harris County MUD.....	281-807-9500
Jane Godwin @ Randall Management, Inc	
Voice Mail nights or week-ends	713-728-1126 ext 11
jgodwin@randallmanagement.com	
Newsletter Publisher	
Peel, Inc.....	advertising@PEELinc.com
888-687-6444	

HOMEOWNERS ASSOC.

BOARD OF DIRECTORS

President	Scott Ward	2014 - 2017
Secretary	Brenda Jackson	2015 - 2018
Treasurer	Steve Mueller	2013 - 2016
Director	Cynthia McDonald	2015 - 2018
Director	Angie Wilson	2014 - 2017

Please contact us at wphoa.board@willowpointe.org if you have questions, comments or concerns.

ADVERTISING INFO

Please support the businesses that advertise in the Willow Pointe Newsletter. Their advertising dollars make it possible for all Willow Pointe residents to receive the monthly newsletter at no charge. No homeowners association funds are used to produce or mail the newsletters. If you would like to support the community newsletter by advertising, please contact our sales office at 888-687-6444 or advertising@peelinc.com. The advertising deadline is the 8th of each month for the following month's newsletter.

(Continued from Cover)

Your soil may be depleted of the minerals necessary for turf grass to thrive. Get a soil test done. Texas A&M Agrilife Extension Soil, Water and Forage Testing Laboratory in College Station will conduct a soil test for around \$20. Contact your local Extension office (936-539-7824) for more information. There are also private soil testing laboratories in the area.

Please remember that at this time, grass is still dormant. Your grass will begin to come out of full hibernation after the last frost date. Until it begins to green up, there is no need to water. After, begin watering only if needed, using no more than 1 inch per week.

Do not fertilize yet.

It's far too early to fertilize your lawn. Fertilization now will only help weeds take hold. The same goes for compost. Wait until mid-spring to do these chores.

WIRED

ELECTRICAL SERVICES

SERVICING ALL YOUR ELECTRICAL NEEDS

- Panel Upgrades
- Home Inspections
- TV Install/Mounting
- Troubleshooting
- Remodeling
- Landscaping Lighting
- Home Generators

RESIDENTIAL & COMMERCIAL 24-7 SERVICE
LICENSED & INSURED

**Take \$25.00 Off Your
Next Service Call**

FAMILY OWNED AND OPERATED

713.467.1125 or 281.897.0001

www.WiredES.com



TECL 22809 Master 100394



YARD OF THE MONTH

In a winter of extreme cold and heat, we are close to getting back to the normal... heat. These lawns seem no worse for wear after exiting this winter. Congratulations to the family at 10111 Bayou Trail Court who received first place for the month. Also congratulations go to the family at 10346 N. Laurel Branch who receive second place this month.



SIMONTON
WINDOWS

JamesHardie



PROTECT YOUR HOME & POCKETBOOK

CALL FOR A FREE ESTIMATE ON JAMES HARDIE
INSULATED SIDING AND WINDOWS

Get a \$200 VISA Gift Card on
Simonton windows *(minimum of 10 windows)*

AND

\$200 Rebate on James Hardie
Insulated Siding *(10 squares or more)*

24 month financing with no interest
1st and oldest Hardplank company in Houston

281.859.9000
HoustonSiding.com

See store for details.

HOUSTON SIDING
COMPANY



Harris County SHERIFF'S OFFICE Patrol Report JANUARY 2017

Category	No.
Burglary/Habitat	0
Burglary/Motor vehicle	1
Criminal Mischief	0
Disturbance/Family	0
Disturbance/Loud Noise	0
Local Alarms	7
Suspicious Person	1
Traffic stop	3
Vehicle suspicious	2



**Please remember to pick
up after your pets and
"scoop the poop"**

BASHANS PAINTING & HOME REPAIR

- Interior & Exterior Painting
- HardiPlank Replacement
- Sheetrock Repair
- Cabinet Painting
- Pressure Washing
- Fence Repair/Replacement
- Custom Staining
- Gutter Repair & Replacement
- Crown Molding
- Wallpaper Removal
- Wood Replacement
- Interior Carpentry
- Wallpaper Removal & Texture
- Garage Floor Epoxy
- Roofing
- Faux Painting

NO MONEY UP FRONT

20 Years Experience • References Available

Commercial/Residential

~ FREE ESTIMATES ~

BashansPainting@earthlink.net

◆ **FULLY INSURED**

281-347-6702

281-731-3383 cell

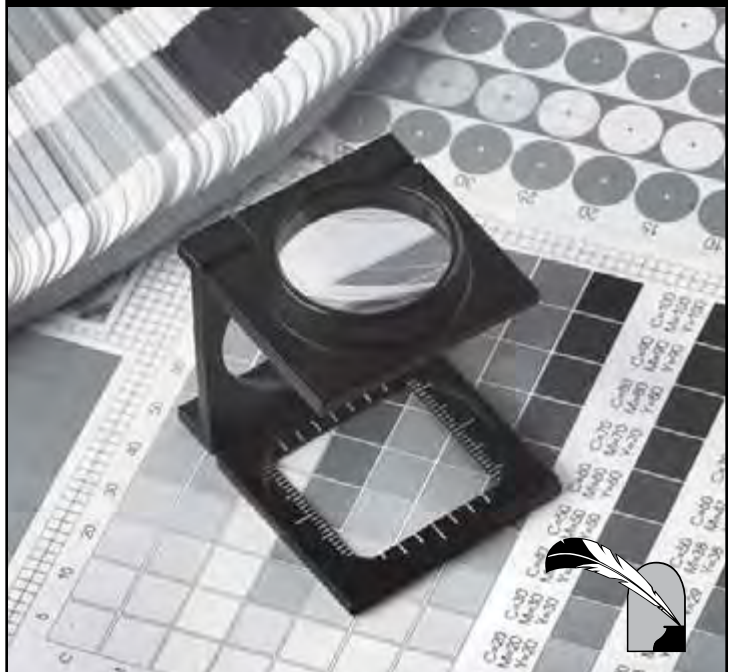


HARDIPLANK®



Quality
PRINTING COMPANY

From design to print to mail,
Quality Printing can help you
with all of your printing needs!



512.263.9181

QualityPrintingOfAustin.com

TENNIS TIPS



By USPTA/PTR Master Professional
Director of Special Events - Polo Tennis and Athletic Club

HOW TO EXECUTE THE TWO HANDED BACKHAND LOB



In previous newsletters, I offered tips on how to hit the forehand groundstroke, the two-handed backhand, the one-handed backhand, the forehand volley, the two-handed backhand volley, the serve, the forehand half-volley, the one-handed backhand volley, the overhead “smash”, the forehand service return, the backhand service return, the forehand high volley approach shot, the two-handed high volley approach shot, the one-handed high volley approach shot, and the forehand lob.

In this issue, I will offer instructions on how to execute the Two Handed Backhand Lob. This shot is used when a player is forced to retrieve a ball that is hit deep to the backhand side of the player, and the opponent is either charging to the net or staying far back. The player hitting the lob is looking for “air time” to regain balance and court space. This ball should be hit high enough so the players at the net cannot reach and “slam” the ball down, or force the opponent at the base line to retrieve back. In the illustrations, Roxanne Cossette, a Member of the Polo Tennis and Athletic Club, shows the proper technique to execute this stroke.

Step 1: The Back Swing: When Roxanne is forced deep into the backhand side and realizes that she must hit a defensive lob, she pivots to the left and gets her racket back early. Notice

that the head of the racket is low and her left hand is on the handle of the racket. Her eyes are focused on the path of the ball and her weight is on her left foot.

Step 2: The Point of Contact: Roxanne is now ready to hit the ball. Her eyes are now focused on the point of contact and the face of the racket is tilted at a 45-degree angle to create height and depth on her lob. Her goal is to keep her head still and not start looking up to her opponent or to the other side of the court.

Step 3: The Follow Through: The success of a deep lob is the follow through. Roxanne’s left wrist is still “laid back” and her shoulder is lifting the racket above her head. Her right hand is holding the racket slightly, but still in control of the racket.

Step 4: The Shuffle Back: Once Roxanne finishes the stroke, her goal is to either move forward toward the net top to hit an overhead, or to shuffle back to the middle of the court to drive the next ball back to the opponent. In this caption, she moved back to the center of the court waiting for the opponent’s shot to come back.

*Look in the next Newsletter for: How to execute
“The One-Handed Backhand Lob”*

Willow Pointe

At no time will any source be allowed to use the Willow Pointe Newsletter's contents, or loan said contents, to others in anyway, shape or form, nor in any media, website, print, film, e-mail, electrostatic copy, fax, or etc. for the purpose of solicitation, commercial use, or any use for profit, political campaigns, or other self amplification, under penalty of law without written or expressed permission from Peel, Inc. The information in the Willow Pointe Newsletter is exclusively for the private use of the Willow Pointe HOA and Peel, Inc.

DISCLAIMER: Articles and ads in this newsletter express the opinions of their authors and do not necessarily reflect the opinions of Peel, Inc. or its employees. Peel, Inc. is not responsible for the accuracy of any facts stated in articles submitted by others. The publisher also assumes no responsibility for the advertising content with this publication. All warranties and representations made in the advertising content are solely that of the advertiser and any such claims regarding its content should be taken up with the advertiser.

* The publisher assumes no liability with regard to its advertisers for misprints or failure to place advertising in this publication except for the actual cost of such advertising.

* Although every effort is taken to avoid mistakes and/or misprints, the publisher assumes no responsibility for any errors of information or typographical mistakes, except as limited to the cost of advertising as stated above or in the case of misinformation, a printed retraction/correction.

* Under no circumstances shall the publisher be held liable for incidental or consequential damages, inconvenience, loss of business or services, or any other liabilities from failure to publish, or from failure to publish in a timely manner, except as limited to liabilities stated above.

**ADVERTISE
YOUR BUSINESS
TO YOUR
Neighbors**

Katie Tagliavia

ktaglivia@peelinc.com

617.642.3076



PEEL, INC.
community newsletters

Red Imported Fire Ants

TEXAS A&M
AGRI LIFE
EXTENSION

I was making dinner the other night and my kiddo was outside playing. He came rushing in panicked. He discovered the fire ants

of the season. While I knew it was inevitable, I was hoping that it would occur a bit later in the year. But, it's true. Fire ants have begun to yet again, dot the landscape with their mounds.



Spring time is usually when people see fire ants swarming (although it can also happen in the fall). Swarming is a reproductive process that usually occurs on warm days after a rain event. Winged males and females leave the mound and fly into the air to mate. After mating, they fall to the ground where males die and females break off their wings and search for a location to establish a new colony. Mated females dig a small chamber in soil, lay a few eggs and rear those young by themselves until the young become mature worker ants. At that point workers take over colony functions and the queen continues to expand the population of the colony by laying more eggs.

While searching for a new colony location, many mated fire ant queens are killed by lizards, birds, spiders, other ants, and often my shoe stomping on them. Queens that survive can be managed by broadcasting fire ant bait over your entire property. New colonies are usually very small and may not have substantial mounds for locating easily for individual treatment. When worker ants forage for food, they would have the opportunity to locate, pick up, and carry fire ant bait back to the colony to share with other ants including the queen.

For more information or help with identification, contact Wizzie Brown, Texas AgriLife Extension Service Program Specialist at 512.854.9600. Check out my blog at www.urban-ipm.blogspot.com

The information given herein is for educational purposes only. Reference to commercial products or trade names is made with the understanding that no discrimination is intended and no endorsement by Texas A&M AgriLife Extension Service or the Texas A&M AgriLife Research is implied.

The Texas A&M AgriLife Extension Service provides equal access in its programs, activities, education and employment, without regard to race, color, sex, religion, national origin, disability, age, genetic information, veteran status, sexual orientation or gender identity.



Attention KIDS: Send Us Your Masterpiece!

Color the drawing below and mail the finished artwork to us at:

Peel, Inc. - Kids Club

308 Meadowlark St

Lakeway, TX 78734-4717

We will select the top few and post their artwork on our Facebook Page - Facebook.com/PeelInc.

DUE: March 31st

Be sure to include the following so
we can let you know!

Name: _____

(first name, last initial)

Age: _____



WP



PEEL, INC.

308 Meadowlark St. South
Lakeway, TX 78734

PRSR STD
U.S. POSTAGE
PAID
PEEL, INC.

WP

**SELL US
YOUR
CAR!™**

 **TEXASDIRECTAUTO.COM**