



The HOME FRONT

MAY 2017

Official Publication of the Cardiff Ranch HOA

VOL 2, ISSUE 5

WELCOME TO THE HOME FRONT

A Newsletter for the Residents of Cardiff Ranch

The Home Front is a monthly newsletter mailed to all Cardiff Ranch residents. Each newsletter will be filled with valuable information about the community, local area activities, school information, and more.

If you are involved with a school group, play group, scouts, sports team, social group, etc., and would like to submit an article for the newsletter, you can do so online at www.PEELinc.com. Personal news (announcements, accolades/ honors/ celebrations, etc.) are also welcome as long as they are from area residents.

GO GREEN! Subscribe via Peelinc.com to have an email sent to you with a link to a PDF of the newsletter, or have an email sent to you instead of having a newsletter mailed to you!

NATURE'S CLEAN-UP CREW

By Cheryl Conley, TWRC Wildlife Center

You always know when an animal has met an untimely and unfortunate death when you see Black Vultures or Turkey Vultures. So how can you tell the difference? The Black Vulture has a featherless black-grey head while the Turkey Vulture has a featherless red head. In flight, the Black Vulture is distinguishable by white-tipped wings whereas the majority of the underside of the Turkey Vulture is pale in color.

Both species of vultures feed primarily on carrion. Most of what vultures eat would make any other animal very sick but they are strong animals with an incredible digestive system and a very strong immune system. Their stomachs are extremely acidic. They can usually survive eating carcasses infected with botulism, anthrax, cholera and salmonella. Some believe that vultures spread disease because they eat dead meat. Actually, the opposite is true. They rid our environment of what could potentially cause the spread of diseases.

Turkey Vultures use their eyesight and keen sense of smell to find their food. By flying low, they are able to see dead animals and detect the gases produced when an animal begins to decay. They prefer to feed on animals that are recently dead. Black Vultures can't smell but will often follow Turkey Vultures to find food.

The breeding season of the turkey vulture starts in March, peaks in April to May, and continues into June. Interestingly, vultures don't make nests. In most cases, females lay two eggs but have been known to lay one and rarely three. The eggs are whitish/cream colored and heavily marked with dark brown or lavender spots

around the larger end. Eggs are generally laid on a bare surface in a protected location. TWRC receives many calls from the public reporting that a vulture took up residence in their atrium or on their front porch.

Both parents incubate, and the young hatch after 30 to 40 days. Chicks are altricial, or helpless at birth. Both adults feed the chicks by regurgitating food for them, and care for them for 10 to 11 weeks. When adults are threatened while nesting, they may flee, or they may regurgitate on the intruder or feign death. If the chicks are threatened in the nest, they defend themselves by hissing and regurgitating. Family groups will remain together until fall.

Although not endangered, vultures have been impacted by the use of lead bullets and buckshot used by hunters. If the shot animal is not removed or covered, vultures will consume the contaminated meat and become ill or die.

Because of their eating habits and appearance, vultures would probably never win a "My Favorite Bird" contest or "Most Beautiful Bird" award but they play an important role in keeping our environment cleaner and definitely smelling better. Have you thanked a vulture today?

If you'd like to learn more about TWRC Wildlife Center, what we do and how you can help, visit our website at www.twrcwildlifecenter.org. Opportunities are available at our wildlife center and include baby bird and opossum feeders. We also provide training for in-home rehabilitators. TWRC Wildlife Center, 10801 Hammerly Boulevard, Houston, TX 77043. 713-468-TWRC.

IMPORTANT NUMBERS

IMPORTANT NUMBERS

Emergency	911
Fort Bend County Sheriff	281-342-6116
Poison Control	800-222-1222
First Service Residential (24/7)	877-378-2388
Customer Service and Billing	800-932-9449

UTILITIES

Best Trash.....	281-313-2378
En-Touch (Customer Service)	281-225-1000
Fort Bend MUD # 58 (Water)	713-405-1750

SCHOOLS

Katy ISD	281-396-6000
Davidson Elementary	281-234-2500
Wood Creek Junior High	281-234-0800
Obra D. Tompkins High School	281-234-1000

PROPERTY MANAGEMENT

Property Manager

Marci Birthisel	713-984-7205
.....	marci.birthisel@fsresidential.com

Service Specialist - Katy Division

Ty Howery	713-984-7282
.....	tyrona.howery@fsresidential.com

On-Site Community Manager

Doreen Cutroni.....	281-394-7314
.....	crclubhouse@entouch.net

OFFICE HOURS:

Monday 4 P.M. – 8 P.M.
Friday 1 P.M. – 6 P.M.
Saturday 10 A.M. – 4 P.M.

NEWSLETTER PUBLISHER

Peel, Inc.	512-263-9181
Advertising.....	advertising@peelinc.com

Cardiff Ranch 2017 Board of Directors

Rachel Gwin – Land Tejas - President
Jeff Sheehan – Land Tejas - Director
Gwen Farley – Resident - Treasurer
Raj Gupta – Resident - Vice President
Rob Kerzee – Resident - Secretary
Email address – crboard@entouch.net

Cardiff Ranch 2017 Board and Round Table Meetings

Board Meeting: May 18, @ 5pm
Round Table: Jun. 17, 2017 @11am
Board Meeting: July 20, @ 5pm
Round Table: Aug. 19, 2017 @11am
Board Meeting: Sept. 21, @ 5pm
Round Table: Oct. 21, 2017 @11am
Board Meeting: Nov. 16, @ 5pm
Round Table: Dec 9. 2017 @11am
Annual Meeting: Date and location to be announced

** The annual meeting cannot be scheduled until the end of **August**. (Unable to schedule until the new school year to determine availability.)

All meetings will take place in the Cardiff Ranch club house located at 26818 Wooded Canyon Dr. with the exception of the annual meeting.

Cardiff Ranch Committees

The following committees have been established to help aide the Board of Directors.

- Executive Committee – comprised of the advisory members
 - Landscape Committee – overseeing the landscaping needs of the community
 - Events Committee – social events, community events, “kids” committee, community outreach
 - Flag Committee – proper maintenance /respect of the flags at the front entrance
 - Finance Committee – financial information and reporting
- Please email the clubhouse at crclubhouse@entouch.net if you are interested in joining a committee.

Never too little to **THINK BIG**



Amazing learning experiences are coming soon.

A PLACE TO WONDER, ACHIEVE AND EXCEL.

Like every Kiddie Academy®, the newest location in Katy-West will nurture kids with the tools, inspiration, guidance and confidence to become their future amazing selves. Kiddie Academy® *Life Essentials®* is at the core, with:



CURRICULUM



TECHNOLOGY



HEALTH & FITNESS



CHARACTER

Kiddie Academy of Katy-West

27613 Pine Mill Ranch Dr.

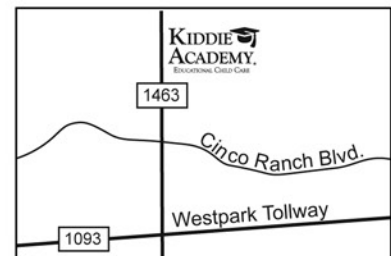
Katy, TX 77494

832-773-9002

kiddieacademy.com/katy-west

Free Registration and One Week Free

New customers only. Not redeemable for cash. One offer per child.
Coupon value: \$150. Participating locations only. Offer expires
5/31/2017. Call academy for details.



CARDIFF RANCH

Planning on Doing Home Improvements?

The P.O.A. requires a Request for Home Improvement Approval form be submitted and approved prior to the start of any work. A fee and/or deposit may be needed for certain projects. Contact First Service Residential at 877-378-2388 with any questions regarding the form or required fees.

Reporting a Streetlight Outage

Have a streetlight out? You can go online to report the outage. Just go to centerpointenergy.com, select customer service – electric outage center – report street light outage. You will need the streetlight number located on the pole.

BASHANS PAINTING & HOME REPAIR

- Interior & Exterior Painting
- HardiPlank Replacement
- Sheetrock Repair
- Cabinet Painting
- Pressure Washing
- Fence Repair/Replacement
- Custom Staining
- Gutter Repair & Replacement
- Crown Molding
- Wallpaper Removal
- Wood Replacement
- Interior Carpentry
- Wallpaper Removal & Texture
- Garage Floor Epoxy
- Roofing
- Faux Painting

NO MONEY UP FRONT

20 Years Experience • References Available

Commercial/Residential

~ FREE ESTIMATES ~

BashansPainting@earthlink.net

♦ FULLY INSURED

281-347-6702

281-731-3383 cell



HARDIPLANK®



WIRED

ELECTRICAL SERVICES

SERVICING ALL YOUR ELECTRICAL NEEDS

- Panel Upgrades
- Home Inspections
- TV Install/Mounting
- Troubleshooting
- Remodeling
- Landscaping Lighting
- Home Generators

RESIDENTIAL & COMMERCIAL 24-7 SERVICE
LICENSED & INSURED

**Take \$25.00 Off Your
Next Service Call**



FAMILY OWNED AND OPERATED

713.467.1125 or 281.897.0001

www.WiredES.com



TECL 22809 Master 100394





MOSQUITO REPELLENTS

As mosquito season is ramping up, everyone is (hopefully) aware of possible disease transmission by mosquitoes. It is important that you protect yourself when spending time outside.

Activity times for mosquitoes can vary. Most people are familiar with the four D's- DRAIN (standing water), DEET (wear some repellent), DUSK & DAWN (stay indoors during dusk and dawn to avoid peak populations) and DRESS (wear long sleeves and long pants). While this is still good advice, it may be a good idea to spread the dress and repellent advice for anytime you spend time outdoors.

When outside, wear long pants and a long sleeved shirt in light colors to reduce the number of mosquitoes that can reach your skin. Repellent should only be applied to clothing and exposed skin. Do not apply repellent underneath clothing! If you want to apply repellent to your face, spray your hands with repellent and rub it onto your face. Do not spray repellent directly into your face or near eyes or mouth. Make sure to apply repellent outdoors. Do not allow children to handle repellents. Wash hands before eating, smoking or using the restroom.

The Center for Disease Control (CDC) recommends using a product registered with the EPA (Environmental Protection Agency) containing one of the following active ingredients: DEET, picaridin, IR3535 and some of the products containing oil of lemon eucalyptus.

DEET, also known N,N-diethyl-m-toluamide or N,N-diethylbenzamide, was developed by the U.S. Army in 1946 to protect soldiers in insect-infested areas. Pesticides containing DEET have been used by the general public since 1957. Products containing DEET should not be used on children younger than 2 months of age (read the label and check with your pediatrician if you have questions). DEET has a slight odor and may have a greasy feel to some people. It may damage plastic, rubber, vinyl or synthetic fabrics. DEET may be irritating to the eyes and skin for some people. DEET comes in a wide variety of concentrations, so choose the one that will work best for your situation.

Picaridin was first made in the 1980's and resembles a natural compound called piperine (which is found in plants used to produce black pepper). Picaridin has been used in Europe and Australia for many years, but has only been in the U.S. since 2005. Picaridin is non-greasy and is odorless.

IR-3535, or 3-[N-Butyl-N- acetyl]-aminopropionic acid, ethyl ester, was developed in the mid- 1970's and became registered for use in the U.S. in 1999. It is registered as a biopesticide by the EPA because it is functionally identical to a naturally occurring substance (an amino-acid). It may dissolve or damage plastics and may be irritating to the eyes.

Oil of lemon eucalyptus (OLE) or PMD (para-menthane-3,8-diol)

are essentially the same thing; PMD is the synthesized (lab created) version of oil of lemon eucalyptus. "Pure" or "essential" oil of lemon eucalyptus is not labeled as a repellent and has not undergone testing and should not be used as a repellent product. OLE/PMD has been on the market in the U.S. since 2002. OLE/PMD should not be used on children younger than 3 years of age. The natural product (OLE) has known allergens within it while the synthetic version (PMD) has less of a risk to allergens. This product is classified as a biopesticide. OLE/PMD has a varying range of residual, some offering about 20 minutes of protection while other products may last up to two hours.

Many factors play into how long a repellent will last for a person.

Some of these are:

- The concentration (or percent of active ingredient) of the product. You can find the percentage on the product label.
- Person's attractiveness. Some people are more attractive to mosquitoes than others (and no scientific research has proven that it is because of eating garlic, taking vitamin B, using tobacco products, etc.). A person's genetic code plays a large part on what makes a person so attractive to mosquitoes.
- Frequency and uniformity of application. In other words, how often is the repellent applied and how good of coverage did you get?
- Activity level of the person. The more active the person is, the more sweat they produce which can cause the repellent to wash off the surface of the skin.

As a word of caution, there are products that combine sunscreen and insect repellent. The CDC recommends that if you need sunscreen and repellent, that you choose two separate products. Sunscreen should be applied more often than repellents.

For more information or help with identification, contact Wizzie Brown, Texas AgriLife Extension Service Program Specialist at 512.854.9600. Check out my blog at www.urban-ipm.blogspot.com

The information given herein is for educational purposes only. Reference to commercial products or trade names is made with the understanding that no discrimination is intended and no endorsement by Texas A&M AgriLife Extension Service or the Texas A&M AgriLife Research is implied.

The Texas A&M AgriLife Extension Service provides equal access in its programs, activities, education and employment, without regard to race, color, sex, religion, national origin, disability, age, genetic information, veteran status, sexual orientation or gender identity.

CARDIFF RANCH

Its Fertilizer Season

This time of year, is a good time to put down fertilizer for the spring. Local Hardware stores carry a variety of fertilizers for your lawn needs. The secret to a green lawn is two stages of fertilizer, first apply a spring starter mix something like a Turf Builder Weed and Feed and then wait 8 weeks (2 months) and apply a different fertilizer like a Bonus S Southern Weed and Feed. Apply the fertilizer after the grass is mowed using a broadcast or drop spreader and apply according to the directions. After the fertilizer is down water the grass according to the directions on the fertilizer. Try not to over water the lawn as you can end up washing the fertilizer off instead of getting it to soak in. It's a slow process, you will see results in a few weeks and it pays off very nicely when the warm weather moves in in May.

Fitness Center

Fitness center hours are
5:00 a.m. to 10:00 p.m. daily

Please remember that no one under the age of 18 is allowed in the fitness center at any time, even if accompanied by an adult, with the exception of using of the bathroom.

At no time will any source be allowed to use the Cardiff Ranch HOA Newsletter contents, or loan said contents, to others in anyway, shape or form, nor in any media, website, print, film, e-mail, electrostatic copy, fax, or etc. for the purpose of solicitation, commercial use, or any use for profit, political campaigns, or other self amplification, under penalty of law without written or expressed permission from the Cardiff Ranch HOA and Peel, Inc. The information in the newsletter is exclusively for the private use of Cardiff Ranch residents only.

DISCLAIMER: Articles and ads in this newsletter express the opinions of their authors and do not necessarily reflect the opinions of Peel, Inc. or its employees. Peel, Inc. is not responsible for the accuracy of any facts stated in articles submitted by others. The publisher also assumes no responsibility for the advertising content with this publication. All warranties and representations made in the advertising content are solely that of the advertiser and any such claims regarding its content should be taken up with the advertiser.

* The publisher assumes no liability with regard to its advertisers for misprints or failure to place advertising in this publication except for the actual cost of such advertising.

* Although every effort is taken to avoid mistakes and/or misprints, the publisher assumes no responsibility for any errors of information or typographical mistakes, except as limited to the cost of advertising as stated above or in the case of misinformation, a printed retraction/correction.

* Under no circumstances shall the publisher be held liable for incidental or consequential damages, inconvenience, loss of business or services, or any other liabilities from failure to publish, or from failure to publish in a timely manner, except as limited to liabilities stated above.



PEEL, INC.
community newsletters

ADVERTISE
YOUR BUSINESS
TO YOUR
NEIGHBORS

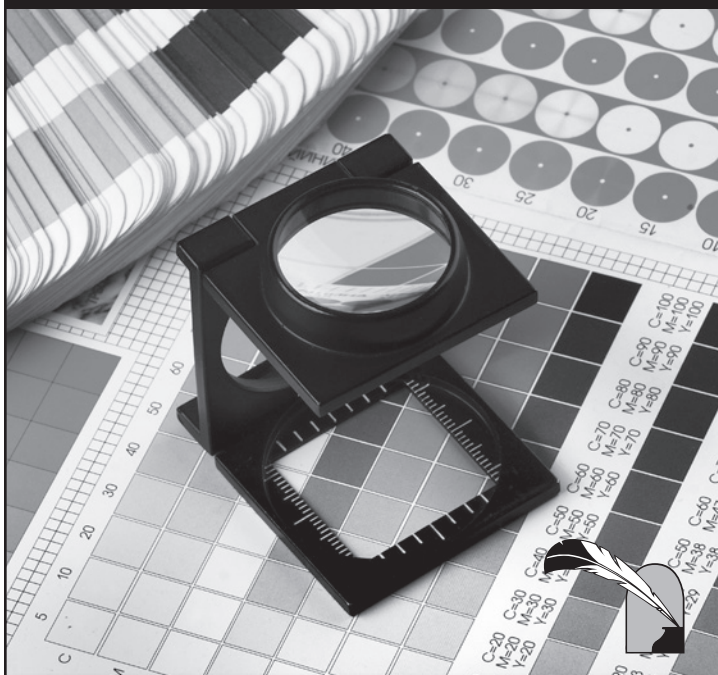
support your community newsletter

Joy Oliver

Joliver@peelinc.com • 713.494.7034

Quality
PRINTING COMPANY

From design to print to mail,
Quality Printing can help you
with all of your printing needs!



512.263.9181

QualityPrintingOfAustin.com



Attention KIDS: Send Us Your Masterpiece!

Color the drawing below and mail the finished artwork to us at:

Peel, Inc. - Kids Club

308 Meadowlark St

Lakeway, TX 78734-4717

We will select the top few and post their artwork on our Facebook Page - Facebook.com/PeelInc.

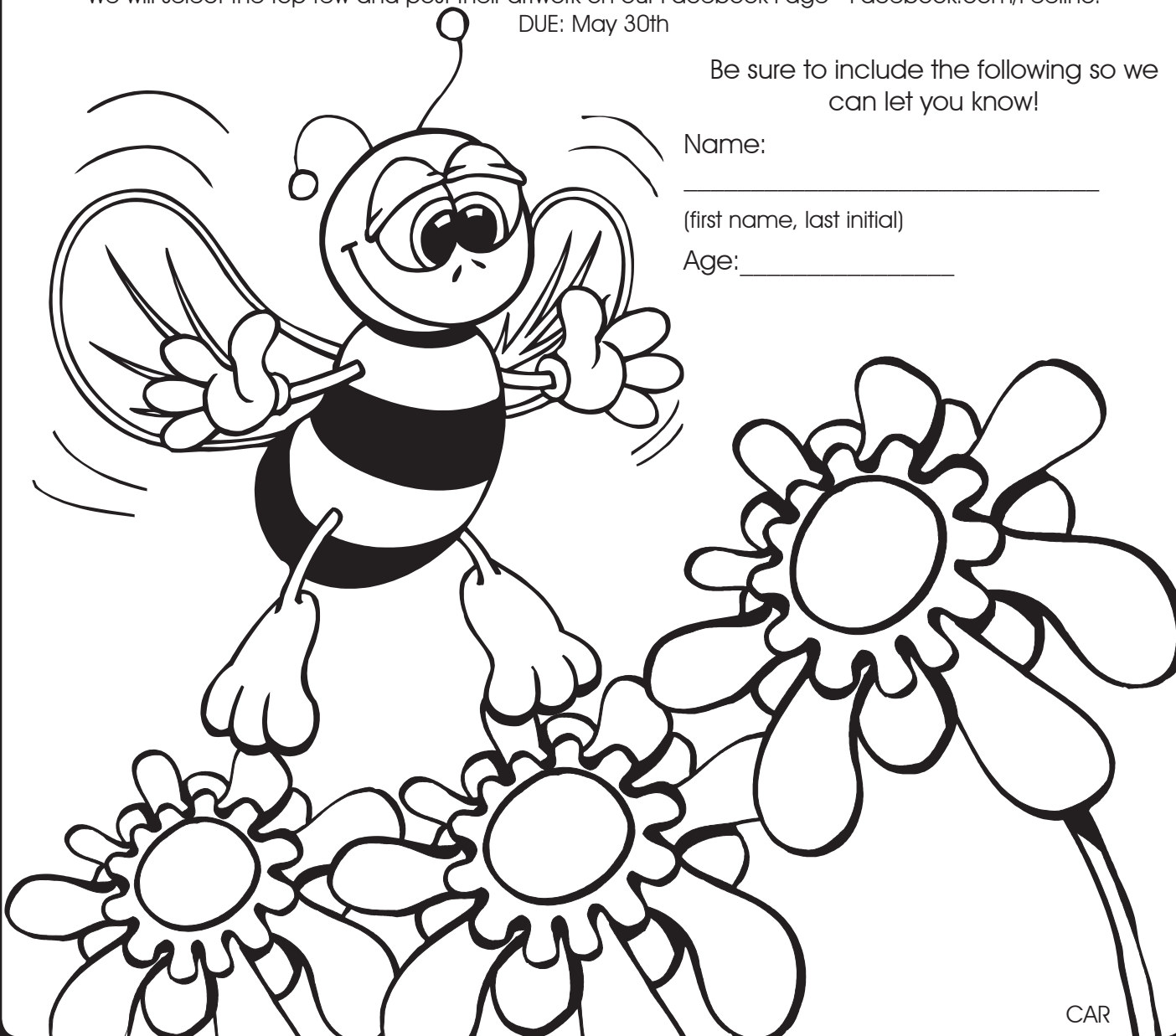
DUE: May 30th

Be sure to include the following so we
can let you know!

Name: _____

(first name, last initial)

Age: _____



CAR



PEEL, INC.

308 Meadowlark St. South
Lakeway, TX 78734

PRSR STD
U.S. POSTAGE
PAID
PEEL, INC.

CAR

**SELL US
YOUR
CAR!**TM



TEXASDIRECTAUTO.COM