



Baking Contest Winners 2017

Watch for an announcement of the baking contest winners who participated in the July 1st event.
Pictures and an overview of the annual event will be posted in the August newsletter.

Attention Parents of Graduating Seniors!

We would like to recognize our graduating seniors by including a small picture and a few lines about where your child will be attending college. Please send your information to articles@peelinc.com (include the newsletter you would like to recognize them in, photo, name, etc).

IMPORTANT NUMBERS

BRAZORIA COUNTY SHERIFF	281-331-9000
POISON CONTROL	281-654-1701
CENTERPOINT ENERGY (GAS)	713-659-2111
Report streetlights out	713-207-2222
<i>(street lights need 6 digit pole #) www.centerpointenergy.com/outage</i>	
MUD #2 SEVERN TRENT	281-579-4500
MUD #3 & 6	
SiEnvironmental, LLC.	832-490-1600
BRAZORIA COUNTY ROADS & BRIDGES	
(street and curb repairs)	281-331-3197
For street sign concerns	281-756-1548
WASTE MANAGEMENT	281-487-5000
MOSQUITO CONTROL	281-331-6106 EXT. 1532
EMERGENCY	911
<i>(always use if life or property are at risk)</i>	
NON-EMERGENCY	281-331-9000
ANIMAL CONTROL	281-756-2265
CALL BEFORE YOU DIG	800-245-4545
CABLE/INTERNET/PHONE...COMCAST..	713-341-1000
AT&T	800-288-2020

SILVERLAKE HOA INFO

Linda Hermon - Community Manager
Crest Management Company Silverlake office location
10100 Broadway, Suite 110
Pearland, Texas 77584

Linda.Hermon@Crest-Management.com
281-272-6377 Office 281-579-7062 Fax
www.crest-management.com

HOA website: www.SilverlakeHOA.com

Amanda May - Assistant Manager
281-945-4667

Clubhouse Rentals contact

Amanda May at amanda.may@crest-management.com

NEWSLETTER INFO

EDITOR

To Submit Articles/News.....silverlakeupdates@yahoo.com

PUBLISHER

Peel, Inc www.peelinc.com, 888-687-6444

Advertising advertising@peelinc.com, 888-687-6444

ARTICLE INFO

The Silverlake News is mailed monthly to all Silverlake HOA residents. Residents, community groups, schools, etc., are welcome to submit information. Personal news is also welcome. All submissions will be reviewed for content and approved by the Board of Directors and Newsletter Committee Chair. The deadline for submission is the 8th of the month before publication.



Cedra Bree Haynes is a 2017 graduate of Glenda Dawson High School in Pearland, TX.

She will be attending Sam Houston State University in the fall to obtain her Bachelor's of Science in Nursing.

All the best to you, Sweetpea!

WE FIX SUNKEN DRIVEWAYS & SIDEWALKS!

**HEROES**
RAISING CONCRETE .COM

FREE ESTIMATES 832-526-8618

Dive-In Movies

Dive-In Movies will be shown at the main Silverlake Pool the 2nd Saturday in June, July and August.

Movies are scheduled on the following dates:

July 8th and August 12th.

Location:

2715 Southwyck Parkway

Start Time:

Approximately 8:30 p.m.

Come to the pool and enjoy a great evening of swimming and a movie

Refreshments will be served.

We hope to see you there!

Waste Management holiday schedule

New Year's Day - January 1

Memorial Day - Monday, May 29th

Independence Day - Tuesday, July 4th

Labor Day - Monday, September 4th

Thanksgiving Day - Thursday, November 23rd

Christmas Day - Monday, December 25th



NOTICE OF RELOCATION

**SCHEDULE
TODAY**



PLEASE BE ADVISED: DR. CLAUDIA MAKHOUL

is joining Houston Methodist Primary Care Group and relocating from, Diabetes America, 10970 Shadow Creek Parkway, Suite 270, Pearland, TX 77584 to:

8520 W. Broadway St.

Suite 200

Pearland, TX 77584

HOUSTON
Methodist[®]
PRIMARY CARE GROUP

Schedule today. Visit
houstonmethodist.org/pcg/pearland
or call **713.394.6638**.



ABWA CY-FAIR EXPRESS NETWORK (CYFEN) INDUCTS NEW EXECUTIVE BOARD



Luncheon Details

Thursday, July 27, 2017

Networking 11a.m.;

Luncheon begins at 11:30 a.m.

Sterling Country Club,
16500 Houston National
Blvd., Houston, TX 77095

Costs \$25 with advanced
reservations; \$30 at the door

American Business Women's
Association (ABWA) District

II Vice President Julie Burch is slated to induct the new 2017-2018 Executive Board of the Cy-Fair Express Network (CYFEN) at the upcoming luncheon and networking July 27.

New inductees to the 2017-18 CYFEN Board include: President – Dr. Michelle Becker, Shots for Holly; President-Elect/Vice President – Sonja Rucker Hines, Amegy Bank of Texas; VP of Communications – Diana Saufley, Keller Williams; VP of Finance – Michelle Guerra, MichelleGuerra.com; VP of Marketing – Cathy Conrad, Action

Specialties, LLC; VP of Membership – Robin Haynes, Robin Haynes State Farm; VP of Programs – Kerrie Saeger, Plexus Worldwide; VP of Outreach – Patty Bergfield, Cruise Planners - CyFair; and Past President – Kristin Severson, Aire Serv of Northwest Houston.

Julie Burch is an active second-generation member of ABWA, she is a charter member of the North Dallas Business Women and served on the executive board for three years. She has served on many committees, she was the campaign manager for a District II Vice Presidential candidate, and co-chaired the DACA Woman of the Year luncheon in 2015. She is the North Dallas Business Women's Woman of the year for 2016 and is currently your District II Vice President.

This month's CYFEN meeting begins with networking at 11 a.m. followed with a prompt 11:30 a.m. start of the program. Luncheons are held at the Sterling Country Club, 16500 Houston National Blvd.

About Cy-Fair Express Network (CYFEN)

Now over 60 members strong, Cy-Fair Express Network's vision is to be a community and national leader for the support of professional women by providing a nurturing environment for business development, networking, education and mentoring.

(Continued on Page 5)



SILVERLINE MONTESSORI



Engaged to Learn. Empowered for Life.

We offer the highest quality Montessori education experience and are committed to the emotional, social, and educational growth of our children.

- Engaging Montessori approach
- Degreed and highly qualified teachers
- Carefully prepared, secure indoor and outdoor environments
- Healthy and individualized, daily chef-prepared meals
- Enriching programs included such as Spanish, Music, Art and Yoga
- Infant through 5th Grade



Silverlake
3121 Cullen Pkwy
Pearland, Texas 77584
(281) 997-3700

**Schedule
your tour
today!**

silverlinemontessori.com

Shadow Creek
2080 Reflection Bay
Pearland, Texas 77584
(713) 436-5070

Accredited by the National Independent Private Schools Association (NIPSA) and AdvancED (SACS CASI). Affiliated with the American Montessori Society (AMS).

(Continued from Page 4)

Our members have opportunities to pursue excellence and achieve both local and national recognition. CYFEN is part of the national organization of American Business Women's Association (ABWA), for more information go to www.CYFEN.org.

About American Business Women's Association (ABWA)

Founded in 1949, ABWA provides business training and networking opportunities for women of diverse occupations and backgrounds. ABWA has dedicated 60 years to women's education, workplace skills and career development training. For more information, visit, www.abwa.org.



ADVERTISE
Your Business Here
Call 512.263.9181
for details
www.peelinc.com

ST. MARY'S FALL GIFT MARKET



Visit the 2017 St. Mary's Fall Gift Market!

On Friday, September 29
and Saturday, September 30 from 9 a.m. to 4 p.m.,

St. Mary's Episcopal Church is hosting its 12th annual Fall Gift Market. This is the ideal event to kick off your holiday shopping and decorating! The convenient location at the corner of Louetta Road and N. Eldridge Parkway makes it easy to shop the selection of unique jewelry, home decor, creative toys, handcrafted gifts, collectibles, pottery, candles and trendy clothing for ladies and children. The Fall Gift Market also features The Tea Room offering the famous taco soup, sandwiches, desserts and homemade baked goods, plus the Silent Auction benefiting church-affiliated projects and outreach. For more information, please visit stmaryscypress.org, or call Michelle at 832-559-8726.

**QUALITY A/C SERVICE
AT A PAYLESS PRICE!**

• A Name You Can Trust •
Sales, Service & Installation



**0% Interest
Up To 6 Years!**
Call for details. *Limited Time Offer.

TRANE
An Independent Trane Dealer

Family Owned And Operated

PAYLESS

COOLING & HEATING

Residential & Commercial

We Live In Pearland Too! • Shop Local

**FREE ESTIMATES & SECOND
OPINIONS ON
REPLACEMENT EQUIPMENT**

**\$20
OFF**

Any Repairs

With Coupon Only. Expires 07/31/17.

**\$20
OFF**

AC Check-Reg \$69.99 Excludes Saturday's

With Coupon Only. Expires 07/31/17.

www.paylesscooling.com

281-AC SERVICE
281-227-3784

Local &
Convenient To
Your Area!

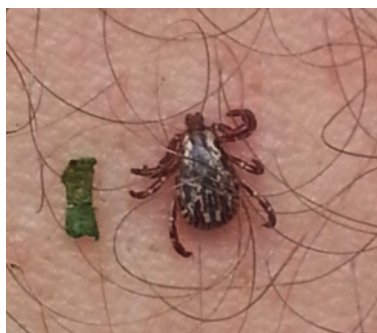
281-480-COOL
281-480-2665 (Clear Lake)

BBB
MEMBER

Insured & Bonded
TACLA022850E

VISA
MasterCard

TICK CONTROL IN THE YARD



This article covers what to do about ticks in your yard. I didn't want to make it too long, so I decided to just link to sources giving information on how to treat pets or yourself/family.

Ticks are arachnids with two body regions, eight legs (except the first stage out of the egg has

only six legs and is called a seed tick), and no antennae. Ticks come in a variety of sizes depending upon if they are nymphs or adult, male or female, engorged or not. Ticks require a blood meal before molting to the next stage of their development as well as adult females requiring a blood meal before laying eggs.

Since ticks can feed on multiple hosts during their lifetime, including humans and other animals, they are capable of transmitting disease organisms through their bite. For more information on diseases transmitted by ticks see this link:

<https://www.cdc.gov/ticks/diseases/index.html>

Ticks wait hosts by climbing up vertical surfaces such as vegetation, fences or shrubbery. When a host brushes past, ticks grab on and locate a suitable spot for feeding. To reduce ticks in your yard you can try some or all of the following:

- Keep grass mowed
- Clear brush, weeds, or overgrown areas
- Discourage wildlife
- Remove debris from the yard
- Treat yard with insecticide making sure to go up surfaces as ticks will climb upwards to grab onto a passing host
- Treat pets

For information on how to deal with ticks on your pet(s) see this source: https://www.cdc.gov/ticks/avoid/on_pets.html

For how to avoid getting, properly inspecting for, or removing ticks from yourself or family members see this source:

https://www.cdc.gov/ticks/avoid/on_people.html

For more information or help with identification, contact Wizzie Brown, Texas AgriLife Extension Service Program Specialist at 512.854.9600. Check out my blog at www.urban-ipm.blogspot.com

The information given herein is for educational purposes only. Reference to commercial products or trade names is made with the understanding that no discrimination is intended and no endorsement by Texas A&M AgriLife Extension Service or the Texas A&M AgriLife Research is implied.

The Texas A&M AgriLife Extension Service provides equal access in its programs, activities, education and employment, without regard to race, color, sex, religion, national origin, disability, age, genetic information, veteran status, sexual orientation or gender identity.

3-Meat Pizza Ring



Preparation: 20 minutes **Cook Time:** 20 minutes **Serves:** 8

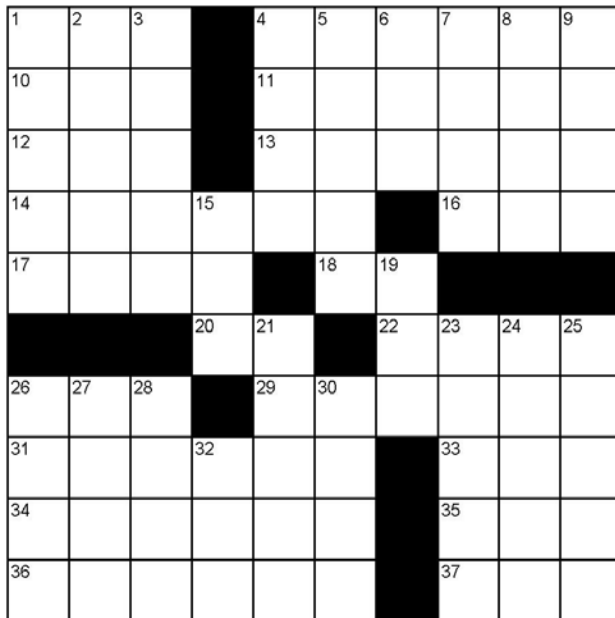
Ingredients

- 1 lb. Italian Sausage
- 1 (15 oz.) can pizza sauce, divided
- 2 garlic cloves, crushed
- 1 1/2 c. shredded pizza cheese
- 1/2 c. diced Canadian bacon
- 1/2 c. chopped pepperoni
- 2 (8 oz.) tubes refrigerated crescent rolls

Instructions

1. Preheat oven to 375 degrees.
2. In a large skillet over medium heat cook sausage and garlic until no longer pink. Drain grease off. Stir in 1/2 c. pizza sauce, pepperoni, Canadian bacon and 1 c. pizza cheese.
3. Unroll crescent dough and separate into triangles. Arrange triangles on a 14 inch ungreased pizza pan with points toward the outside and wide ends overlapping at the center, leaving a 4 inch opening in the center. Press overlapping dough to seal.
4. Spoon the mixture onto the wide ends of the triangles. Fold pointed ends of triangles over filling, tucking points under to form a ring. The filling will be visible.
5. Baked for 12-15 minutes or until the crescents are golden brown. Sprinkle with remaining cheese. Bake 5 minutes longer or until cheese is melted. Serve with remaining pizza sauce.

CROSSWORD PUZZLE



ACROSS

1. Middle
4. Preoccupy
10. Is
11. Properly
12. Pat
13. Aviator
14. "Eagle" constellation
16. Most basic
17. Baseball glove
18. Road (abbr.)
20. Scale note
22. Object
26. Danish krone (abbr.)
29. Canyon
31. Wild beast
33. Digital audio tape
34. Movie "Total ___"withdraw
35. Genius
36. Handy
37. Type of partnership

DOWN

1. Dame
2. Iranian's neighbor
3. First public appearance
4. Opaque gem
5. Thistle
6. Title of respect
7. Austin novel
8. Block
9. In ___ (together)
15. ___ A Small World...
19. Division (abbr.)
21. Toothbrush brand
23. Large wave
24. Found
25. Doled
26. Drat!
27. Joint
28. Costa ___
30. Unite
32. Mutilate

View answers online at www.peelinc.com

© 2006. Feature Exchange



*It's a perfect time to sell your house.
Let's get it listed now.
Buyers are shopping this spring!*

Real Estate Experience Matters!

Call **KELLI DILLING** today to help you with your real estate needs. Your move will happen professionally and seamlessly!

Texas Monthly Magazine has recognized Kelli for the past 6 consecutive years as a "Five Star Realtor" in the Houston market, which is awarded to the top 7% of Realtor members of HAR.com.

KELLI DILLING

Pearland Realtor & Silverlake resident since 2001;

www.kelliwithkeller.com, kdilling@gmail.com

281.827.8751



kw Keller Williams Realty Preferred
2734 Sunrise Blvd Suite 208, Pearland 77584
Each office independently owned and operated.

Silverlake HOA Pool Schedule 2017

revised 3/29/17

Month	Days of Operation	Times of Operation	Guard Ratio
May 6th-28th	Weekends Only		
	Saturday	10:00 AM- 8:00 PM	5 at all times
	Sunday	11:00 AM- 8:00 PM	5 at all times
May 31st- June 30th	Memorial Day, May 29th	10:00 AM- 8:00 PM	5 at all times
	Monday	CLOSED	
	Tuesday	10:00 AM- 8:00 PM	4 at all times
	Wednesday	10:00 AM- 8:00 PM	4 at all times
	Thursday	10:00 AM- 8:00 PM	4 at all times
	Friday	10:00 AM- 8:00 PM	4 at all times
	Saturday	10:00 AM- 8:00 PM	5 at all times
	Sunday	11:00 AM- 8:00 PM	5 at all times
July 1st-31st	Monday	CLOSED	
	Tuesday	10:00 AM- 8:00 PM	3 at all times
	Wednesday	10:00 AM- 8:00 PM	3 at all times
	Thursday	10:00 AM- 8:00 PM	3 at all times
	Friday	10:00 AM- 8:00 PM	3 at all times
	Saturday	10:00 AM- 8:00 PM	4 at all times
	Sunday	11:00 AM- 8:00 PM	4 at all times

(Continued on Page 9)

WANTED

BY PEEL INC.

ENERGETIC SALES REPRESENTATIVES

REWARD

COMMISSION BASED INCOME

WANTED FOR WORKING FROM HOME,
EARNING EXTRA INCOME, AND
SELLING ADS IN YOUR NEWSLETTER

VISIT WWW.PEELINC.COM FOR MORE INFORMATION

888-687-6444 www.PEELinc.com

WIRED

ELECTRICAL SERVICES

SERVICING ALL YOUR ELECTRICAL NEEDS

- Panel Upgrades
- Home Inspections
- TV Install/Mounting
- Troubleshooting
- Remodeling
- Landscaping Lighting
- Home Generators

RESIDENTIAL & COMMERCIAL 24-7 SERVICE
LICENSED & INSURED

Take \$25.00 Off Your
Next Service Call



FAMILY OWNED AND OPERATED

713.467.1125 or 281.897.0001

www.WiredES.com



TECL 22809 Master 100394



Silverlake HOA Pool Schedule 2017 cont.

(Continued from Page 8)

<i>Month</i>	<i>Days of Operation</i>	<i>Times of Operation</i>	<i>Guard Ratio</i>
August		CLOSED	
1st-20th*	Monday	10:00 AM- 8:00 PM	3 at all times
	Tuesday	10:00 AM- 8:00 PM	3 at all times
	Wednesday	10:00 AM- 8:00 PM	3 at all times
	Thursday	10:00 AM- 8:00 PM	3 at all times
	Friday	10:00 AM- 8:00 PM	3 at all times
	Saturday	10:00 AM- 8:00 PM	4 at all times
	Sunday	11:00 AM- 8:00 PM	4 at all times
August 26th (Weekends Only)			
Sept. 3rd	Saturday	10:00 AM- 8:00 PM	4 at all times
	Sunday	11:00 AM- 8:00 PM	4 at all times
Holiday	Monday 4th Labor Day	10:00 AM- 8:00 PM	4 at all times

Pool Closed on Monday, except Holidays.

Last Day of Proposed Season September 4th, 2017

*Based on State Legislative Requirements that Public Schools may not start prior to 4th Monday in August.

(5 lifeguards on duty weekends through July 4th Holiday)

The Silver Star Group



We're Sylvia & Richard Skotak, your Silverlake family Realtors. We can help you with Selling your home, Buying a home, Leasing, Property Management, Commercial Real Estate, and Property Taxes.

Visit **SilverStarSells.com** for a market analysis to determine what your home is worth.

832-200-5686



LEAKY ROOF?

CALL

Phil's Roofing & Siding

Specializing in Roof Repairs



WE ALSO DO:

- Pressure Washing
- Sheetrock Repair
- Wood and Hardie Siding Repairs
- Gutters

Free Estimates • Over 30 Years Experience

PHIL OVERLY

832-552-2200

NOT AVAILABLE ONLINE

At no time will any source be allowed to use The Silverlake News contents, or loan said contents, to others in anyway, shape or form, nor in any media, website, print, film, e-mail, electrostatic copy, fax, or etc. for the purpose of solicitation, commercial use, or any use for profit, political campaigns, or other self amplification, under penalty of law without written or expressed permission from Peel, Inc. The information in the newsletter is exclusively for the private use of Peel, Inc. and the Silverlake HOA.

DISCLAIMER: Articles and ads in this newsletter express the opinions of their authors and do not necessarily reflect the opinions of Peel, Inc. or its employees. Peel, Inc. is not responsible for the accuracy of any facts stated in articles submitted by others. The publisher also assumes no responsibility for the advertising content with this publication. All warranties and representations made in the advertising content are solely that of the advertiser and any such claims regarding its content should be taken up with the advertiser.

* The publisher assumes no liability with regard to its advertisers for misprints or failure to place advertising in this publication except for the actual cost of such advertising.

* Although every effort is taken to avoid mistakes and/or misprints, the publisher assumes no responsibility for any errors of information or typographical mistakes, except as limited to the cost of advertising as stated above or in the case of misinformation, a printed retraction/correction.

* Under no circumstances shall the publisher be held liable for incidental or consequential damages, inconvenience, loss of business or services, or any other liabilities from failure to publish, or from failure to publish in a timely manner, except as limited to liabilities stated above.



PEEL, INC.
community newsletters

ADVERTISE
YOUR BUSINESS
TO YOUR
NEIGHBORS

support your community newsletter

Nichole Taylor

ntaylor@peelinc.com • 512-263-9181
Sales Representative

BASHANS PAINTING & HOME REPAIR

- Interior & Exterior Painting
- HardiPlank Replacement
- Sheetrock Repair
- Cabinet Painting
- Pressure Washing
- Fence Repair/Replacement
- Custom Staining
- Gutter Repair & Replacement
- Crown Molding
- Wallpaper Removal
- Wood Replacement
- Interior Carpentry
- Wallpaper Removal & Texture
- Garage Floor Epoxy
- Roofing
- Faux Painting

NO MONEY UP FRONT

20 Years Experience • References Available

Commercial/Residential

~ **FREE ESTIMATES** ~

BashansPainting@earthlink.net

◆ **FULLY INSURED**

281-347-6702

281-731-3383 cell



HARDIPLANK®





Attention KIDS: Send Us Your Masterpiece!

Color the drawing below and mail the finished artwork to us at:

Peel, Inc. - Kids Club

308 Meadowlark St

Lakeway, TX 78734-4717

We will select the top few and post their artwork on our Facebook Page - Facebook.com/PeelInc.

DUE: July 30th

Be sure to include the following so we can
let you know!

Name: _____
(first name, last initial)

Age: _____



**Happy 4th
of July!**

SLV



PEEL, INC.

308 Meadowlark St. South
Lakeway, TX 78734

PRSRT STD
U.S. POSTAGE
PAID
PEEL, INC.

SLV



BE SOLD!

The Cindy Cristiano Team
RE/MAX Top Realty



Helping your American Dreams come True
Dreams do come True when you are in Home you Love

Whether you are Buying or Selling, You'll find my 26+ years of *EXPERIENCE* and *PROVEN RESULTS* are Key to helping you make the Perfect Move!

Call us Today and *BE SOLD!*



Over 800 *Silverlake* Homes *SOLD!*

The Cindy Cristiano Team
(713) 733-8200

www.MoveWithCindy.com



26 Years of Experience & Proven Results!

