

# *The* **RANCH REVIEW**

June 2018 Volume 12, Issue 6

News for the Residents of Legends Ranch

**CONROE ISD SCHOOL IS OUT NOW, SO THE SUMMER  
POOL SEASON BEGINS WITH JUNE!  
THE FRONT POOL OPEN 12:00 P.M. - 8:00 P.M. TUESDAY  
THROUGH SUNDAY**



★ Host an Exchange Student ★ It's *life-changing* to have a second family in another part of the world!

- Students are ages 15-18 from Europe, Asia & Latin America & attend your local high school.
- Students come with their own \$ & full health insurance.
- Students live as a member of the host family (not a guest) & participate in family activities, chores & respect host family rules.
- Host Families provide a room (can be shared), meals when not in school, some transportation to school events & a loving family atmosphere!
- Welcome Host Families are for up to 8-weeks. Longer-term hosts are for 1 semester (5-months) or a full school year (10-months), starting in August.
- Families are eligible for a tax deduction for hosting.

Contact: Sarah Bloch, [sbloch@icesusa.org](mailto:sbloch@icesusa.org), 713-835-2580.

## IMPORTANT NUMBERS

### Property Tax

Montgomery County Tax .....	936-539-7897
Conroe ISD .....	936-709-7751
Montgomery MUD #89 .....	713-932-9011

### Police & Fire

Emergency .....	911
Montgomery Sheriff .....	936-760-5800
Pct. 3 Constable Office .....	281-364-4211
S. Montgomery Co. Fire Dept. Non-Emergency .....	281-363-3473
Montgomery County EMS Non-Emergency .....	936-441-6243
Crime Stoppers .....	713-222-TIPS
Poison Control .....	800-222-1222
Texas DPS .....	713-681-1761

### Utilities

Electricity (TXU) .....	800-368-1398
Electricity (TXU New Service) .....	281-441-3928
Electricity (Centerpoint) .....	713-207-2222
Gas (Centerpoint) .....	713-659-2111
Water/Municipal Oper. & Consulting .....	281-367-5511
Best Trash .....	281-313-2378
Street Light Outages .....	713-207-2222
Cable/Internet/Phone...COMCAST .....	713-341-1000

### Public Services

Local US Post Office .....	281-419-7948
Toll Road EZ Tag .....	281-875-3279
Voters Registration .....	936-539-7843
Vehicle Registration .....	281-292-3325
Drivers License Information .....	936-442-2810
Montgomery County Animal Control .....	936-442-7738
Montgomery Chamber .....	281-367-5777

<b>Conroe ISD</b> .....	936-709-7751
Birnam Woods Elementary .....	281-863-4200
Cox Intermediate .....	281-465-3200
York Junior High .....	832-592-8600
Oak Ridge High .....	832-592-5300

## NEWSLETTER INFO

### Editor

Submit Articles.....legendsranch@peelinc.com

### Publisher

Peel, Inc. .... www.PEELinc.com, 888-687-6444  
Advertising.....advertising@PEELinc.com, 888-687-6444

**NOT AVAILABLE  
ONLINE**

## BUSINESS CLASSIFIEDS

**RAINCO IRRIGATION SPECIALIST:** Commercial & Residential. Backflow Testing, Irrigation (Sprinkler) System Service, Maintenance and Repair, Rainbird - Hunter. Fully Insured. License # 9004 & 9226. Call 713-824-5327.

**HOKULIA SHAVE ICE:** 3540 Rayford Rd., Spring, TX 77386. Open daily 12-8p starting June (located@HEB Spring Market Pharmacy entrance). Authentically Hawaiian. Buy 1 Get 1 Shave Ice-equal/lesser value FREE! Now Serving...Hawaiian Ice Cream! Text aloha32 to 85775 for Specials! Exp 6/30/18.

# Vacation Bible School

June 25th - 29th 9am - 12:30pm  
Completed Kindergarten through 6th grade

# GAME ON



**GATEWAY BAPTIST CHURCH**

*Discover the Joy of Belonging*

**WORSHIP SERVICE:**

SUNDAYS AT 10:30AM & WEDNESDAYS AT 6:45PM

**BIBLE STUDY CLASSES:**

SUNDAYS AT 9:15AM

2930 RAYFORD ROAD 281.363.4500 • [www.DISCOVERGATEWAY.com](http://www.DISCOVERGATEWAY.com)



# RANCH REVIEW

## The Woodlands Show Chorus (TWSC) and “Essence” Quartet unite in a parade of music!

TWSC (Region 10's 2017 Chorus Champions) members are beside themselves preparing for their “On Parade” show and supper featuring “Essence” Quartet, Region 10's 2017 Quartet Champions! This pair of champions are coming together to give The Woodlands community an exciting afternoon of music, music, more music, and of course a spaghetti supper, silent auction, bake sale and more!

TWSC members, along with choruses from all over the world have been preparing to compete for the international championship to be awarded in St. Louis this coming October. To achieve that goal, they've been coached by several world-renowned coaches & directors. Many hours will be spent rehearsing during a mini-retreat in June, as well as a full-weekend retreat in September to get fully prepared.

You may have already seen these ladies in purple working hard at the Insuperity Golf Tournament 19th hole in early May, as well as The Conroe Veterans Treatment Performance in May. You can also see them performing during Rock the Library in June, at the Bernhard Winery in July and their annual performance prior to the July 3rd Houston Symphony Star Spangled Salute at The Cynthia Woods

Mitchell Pavilion. In preparation for international contest, TWSC will also perform for their Region 10's fall meeting.

TWSC was only 4 years old when they medaled with the top 10 world competitors at their last international competition in Las Vegas in 2016.

“Essence” Quartet members have earned several Region 10 medals. They hold two 3rd place medals and one 2nd place medal with a score high enough to qualify them as wildcard international competitor in Hawaii in 2013. In 2017, they took Region 10's gold and competed on the international stage in Las Vegas.

Candice, Kerry and Tianna met while singing with Alamo Metro Chorus from San Antonio, TX. Their newest member, Katarina, is a former member of Tone Appetite, the 2017 Young Women in Harmony's Rising Star Champions. She comes from a family of barbershoppers going way back! Essence loves to sing and laugh, and they love each other.

*(Continued on Page 7)*



### AFFORDABLE SHADE PATIO COVERS

*Creating Comfort for Outdoor Living... with Affordable Shade.*

**AffordableShade.com**  
CUSTOM PATIO COVERS

*We obtain City Permits, TDI Windstorm Certification, and help with HOA Approvals.*

*Call to schedule a free estimate.*  
**713-574-4648**

*Visit our website to view more designs.*  
**AffordableShade.com**

**Custom Patio Covers**  
Cedar & Treated Pine Shade Arbors  
Aluminum Patio Covers & Arbors  
Palapas & Tiki Huts & Screen Rooms  
Decorative & Structural Concrete

**Financing Available\* with Payments as Low as \$250**  
*\*Subject to Credit Approval*



IN A WORLD DOMINATED BY THE TYPICAL, ONE COMMUNITY DARES TO BE ANYTHING BUT.

MIND-BLOWING  
NEW SECTIONS

NEW  
ON-SITE SCHOOLS

2 MINUTES from the  
GRAND PARKWAY

AWARD-WINNING  
AMENITIES

NOW OPEN:  
LAKE HOLCOMB

NONSTOP EVENTS and  
EXCITEMENT

# ACTION-PACKED!

## YOU WON'T BELIEVE THE FUN

**A** **AWESOME FOR KIDS**  
FUN FAMILIES ADMITTED

*Falls*  
AT IMPERIAL OAKS

31220 Birnham Woods Drive | Spring, Texas 77386  
[fallsatimperialoaks.com/action](http://fallsatimperialoaks.com/action)





# RANCH REVIEW

The Ranch Review is a private publication published by Peel, Inc. It is not sanctioned by any homeowners association or organization, nor is it subject to the approval of any homeowners association or organization, nor is it intended, nor implied to replace any publication that may be published by or on behalf of any homeowners association or organization. At no time will any source be allowed to use the Ranch Review contents, or loan said contents, to others in anyway, shape or form, nor in any media, website, print, film, e-mail, electrostatic copy, fax, or etc. for the purpose of solicitation, commercial use, or any use for profit, political campaigns, or other self amplification, under penalty of law without written or expressed permission from Peel, Inc. The information in the newsletter is exclusively for the private use of Peel, Inc.

**DISCLAIMER:** Articles and ads in this newsletter express the opinions of their authors and do not necessarily reflect the opinions of Peel, Inc. or its employees. Peel, Inc. is not responsible for the accuracy of any facts stated in articles submitted by others. The publisher also assumes no responsibility for the advertising content with this publication. All warranties and representations made in the advertising content are solely that of the advertiser and any such claims regarding its content should be taken up with the advertiser.

\* The publisher assumes no liability with regard to its advertisers for misprints or failure to place advertising in this publication except for the actual cost of such advertising.

\* Although every effort is taken to avoid mistakes and/or misprints, the publisher assumes no responsibility for any errors of information or typographical mistakes, except as limited to the cost of advertising as stated above or in the case of misinformation, a printed retraction/correction.

\* Under no circumstances shall the publisher be held liable for incidental or consequential damages, inconvenience, loss of business or services, or any other liabilities from failure to publish, or from failure to publish in a timely manner, except as limited to liabilities stated above.

PATIO COVERS | PERGOLAS | CARPORTS | PORTE COCHÈRES  
OUTDOOR KITCHENS | DECORATIVE OUTDOOR FLOORING



RAIN PROOF DESIGN

CUSTOM PATIO STRUCTURES

Committed to Quality, Value & Service



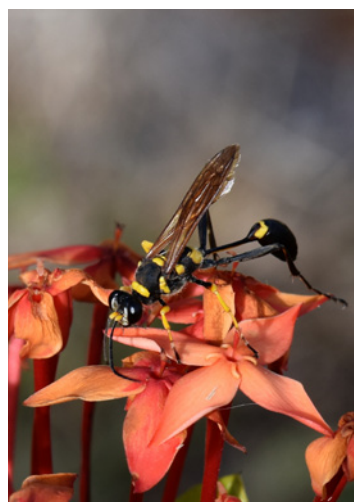
832.570.3990 [www.custompatiostructures.com](http://www.custompatiostructures.com)



FAMILY OWNED & OPERATED WITH OVER 20 YEARS EXPERIENCE  
FREE ESTIMATES & DESIGN CONSULTATION • 100% FINANCING AVAILABLE

## TEXAS A&M AGRI LIFE EXTENSION

### MUD DAUBERS



Mud daubers are a great wasp to have around. They are solitary, generally docile, and can help to reduce various bugs in the landscape. Mud dauber wasps are  $\frac{3}{4}$ - 1" in size and come in a variety of colors. They have a very thin, thread-like waist.

Mud daubers create a mud structure that they provision with insects and/or spiders; they lay an egg on each prey item within a cell in the nest, and then seal the nest off.

When larvae hatch from eggs, they eat the items provisioned for them, pupate, and then emerge as adults to begin the process over.

Management is not usually needed for mud daubers as they do not guard their nest like other wasps. While they are capable of stinging, they are not considered to be aggressive. If you do not like the look of the mud nests, you can remove them with a putty knife.

For more information or help with identification, contact Wizzie Brown, Texas AgriLife Extension Service Program Specialist at 512.854.9600. Check out my blog at [www.urban-ipm.blogspot.com](http://www.urban-ipm.blogspot.com)

This work is supported by Crops Protection and Pest Management Competitive Grants Program [grant no. 2017-70006-27188 /project accession no. 1013905] from the USDA National Institute of Food and Agriculture.

The information given herein is for educational purposes only. Reference to commercial products or trade names is made with the understanding that no discrimination is intended and no endorsement by Texas A&M AgriLife Extension Service or the Texas A&M AgriLife Research is implied. The Texas A&M AgriLife Extension Service provides equal access in its programs, activities, education and employment, without regard to race, color, sex, religion, national origin, disability, age, genetic information, veteran status, sexual orientation or gender identity.


# RANCH REVIEW

(Continued from Page 4)

If you would like to join the musical parade to be held on July 21, 2018 at Christ Church UMC, 6363 Research Blvd, The Woodlands, TX, simply email [tickets@TheWoodlandsShowChorus.org](mailto:tickets@TheWoodlandsShowChorus.org) or call 713 688-6509. Spaghetti Supper and Silent Auction will begin at 4 pm with the parade of music to begin at 5:30 pm. Tickets are \$25 adult, \$20 seniors and children and \$30 reserved – discounts apply for groups of 10 or more.

TWSC is constantly auditioning new members and love to have visitors at their rehearsals. They meet each Monday at 7:00 pm in the Atrium of Grace Crossing Church, 105 FM 1488 (just west of I-45) in The Woodlands. For more information, visit [www.TheWoodlandsShowChorus.org](http://www.TheWoodlandsShowChorus.org).

**GO GREEN  
GO PAPERLESS**



**Sign up to  
get this  
newsletter  
in your  
inbox! Visit  
[peelinc.com](http://peelinc.com)  
for details.**



**PEEL, INC.**  
community newsletters

**ADVERTISE  
YOUR BUSINESS  
TO YOUR  
NEIGHBORS**

support your community newsletter

**Nichole Taylor**  
[ntaylor@peelinc.com](mailto:ntaylor@peelinc.com) • 512-263-9181  
 Sales Representative

**SUDOKU**

View answers online at [www.peelinc.com](http://www.peelinc.com)

		7	1				3	
					5			
4	6					8		7
							2	
	5		9	1	3			
			7			3		
				6				8
		5		8			1	
	2	3						

© 2006, Feature Exchange

The goal is to fill in the grid so that every row, every column, and every 3x3 box contains the digits 1 through 9. Each digit may appear only once in each row, each column, and each 3x3 box.

## WIRED

### ELECTRICAL SERVICES

SERVICING ALL YOUR ELECTRICAL NEEDS

- Panel Upgrades
- Home Inspections
- TV Install/Mounting
- Troubleshooting
- Remodeling
- Landscaping Lighting
- Home Generators



RESIDENTIAL & COMMERCIAL 24-7 SERVICE  
LICENSED & INSURED

**Take \$25.00 Off Your  
Next Service Call**

FAMILY OWNED AND OPERATED  
**713.467.1125 or 281.897.0001**  
**[www.WiredES.com](http://www.WiredES.com)**



TECL 22809 Master 100394








**PEEL, INC.**

308 Meadowlark St. South  
Lakeway, TX 78734

PRSRT STD  
U.S. POSTAGE  
PAID  
PEEL, INC.

LR

## Advertising Exposure Tailored Just For Realtors



### Advertising Helps Sell Your Listings & Promote Your Real Estate Company.

Contact A Sales Representative Today  
to Make This Space Work For You!

**1-888-687-6444 or [www.peelinc.com](http://www.peelinc.com)**



**PEEL, INC.**  
community newsletters