

THE TIMES

NEWS FOR THE RESIDENTS OF BRIDGELAND

March 2019

An Independent Publication Serving the Bridgeland® Community

Volume 13, Issue 3



BRIDGELAND CAR SHOW

April 6, 2019

Cars, trucks and motorcycles welcome to enter

1st-5th place trophies for peoples favorite

\$10 to show

Oak Meadow Park, 10 AM - 4 PM

Space is limited

info - kellyco86@att.net



Hillbilly Production Co.

IMPORTANT NUMBERS

BRIDGELAND COMMUNITY ASSOCIATIONS (HOA)

16902 Bridgeland Landing

Cypress, TX 77433

281-304-1318

Community Manager

Melissa Hargrove melissa.hargrove@inframark.com

Lakeland Community Manager

Valier Bir valerie.bir@inframark.com

Activities Director

Rachel Johnson rachel.johnson@inframark.com

Administrative Assistant - Activities Director

Iliana Zuniga iliana.zuniga@inframark.com

Administrative Assistant - Compliance & Architectural

Suzanne Hilton suzanne.hilton@inframark.com

Parkland Assistant Community Manager

Tiffany Polichnia

Receptionist & Front Desk

Fritzy Lopez fritzy.lopez@inframark.com

Landscape Manager

Kevin Brown kevin.brown@inframark.com

Maintenance Manager

Robert J. Allard

EMERGENCY NUMBERS

EMERGENCY 911

Fire 911

Ambulance 911

Harris County Sheriff 713-221-3300

AREA HOSPITALS

Cy-Fair Medical Center 281-897-3300

North Cypress Medical Center 832-912-3500

Willowbrook Methodist 281-477-1000

Memorial Hermann Cypress 346-231-4000

SCHOOLS

Cy-Fair ISD 281-897-4000

Pope Elementary School 281-373-2340

Robison Elementary School 281-213-1700

Warner Elementary School 281-213-1650

Wells Elementary School 832-349-7400

Spillane Middle School 281-213-1645

Smith Middle School 281-213-1010

Cy Woods High School 281-213-1727

Cy Fair High School 281-897-4600

Cy Ranch High School 281-373-2300

Bridgeland High School 832-349-7600

UTILITIES

Trash - Republic Waste 281-446-2030

Water and Sewer 713-371-1400

Gas - Centerpoint Energy 713-659-2111

Electricity - Reliant Energy 800-735-42568

Cable/Internet/Phone - Comcast 713-341-1000

Cable/Internet/Phone - AT&T 855-293-7676

PUBLIC SERVICES

Cypress Post Office 281-855-6801

Harris County Tax 713-224-1919

NEWSLETTER PUBLISHER

Peel, Inc. 888-687-6444

ADVERTISING

Peel, Inc. 888-687-6444

..... advertising@PEELinc.com

THE TIMES

A newsletter for Bridgeland residents.

The Times is a monthly newsletter mailed to all Bridgeland residents. Each newsletter is filled with valuable information about the community, local area activities, school information and more.

If you are involved with a school group, play group, scouts, sports activity, social group, etc. and would like to submit an article for the newsletter you can do so online at www.PEELinc.com or you can email it bridgeland@peelinc.com. Personal news for the Stork Report, Teenage Job Seekers, special celebrations, birthday announcements and military service are also welcome. *Our goal is to keep you informed!*



full service landscape company

281-373-0378



Landscape Maintenance

Commercial & Residential

Patios & Walkways

Pavestone * Flagstone * Concrete

Landscape Services

Design & Installation * Lighting *
Seasonal Flowers * Drainage *
Sod Installation * Rock Borders

Sprinkler Systems

Design * Installation * Repairs *
Property Coverage * Warranty *
Licensed Irrigation #8587

Proudly serving northwest Houston since 1997



Insured for your protection.



horizon-landscape.com

Bridgeland Garden Club Tour of the Best Garden Nurseries in Houston

Wednesday, March 6, 9:00 a.m.

Program: Nurseries in the Heights

Leave from the Activity Center at 9:00 a.m. and carpool to The Heights to visit Joshua's Nursery & Antiques at 502 West 18th Street. We will then go to Buchanan Native Plants & Organics Nursery at 611 East 11th Street followed by a visit to Wabash Feed, Garden and Antiques (buy your chickens & rabbits here!). Lunch at Collina's Italian Cafe 502 West 19th St. Houston Shopping at Penzey's Spices RSVP to kayburkhalter@sbcglobal.net if coming.



Bridgeland Garden Club Boots & Gloves Coffee Hour

Make new friends and learn what fun the Bridgeland Garden Club Gals have. Visitors Welcome

When: 10: am to 1: 00 om Tuesday March 19

Where: 18118 East Allen Shore Drive

What to wear: Your favorite gardening boots/shoes and gloves or just come as you are

What to bring: a dish to share if you have time

RSVP to kayburkhalter@sbcglobal.net if you are coming



Creating Reflections of

Elegance

Perry Pools & Spas

Since 1986 www.PerryPools-Spas.com 281-213-8100

Owner,
David Perry
Cypress, Texas

Award for Distinction
winner of excellence

Award for Excellence

2006 Cy-Fair Small Business of the Year 1999 - 2017 BBB - Gold Star Award
2007 NHMCCD Finalist - Small Business of the Year
2008,2010,2011,2012 & 2013 BBB — Award of Excellence

Art Classes

Presented by Bridgeland Arts Group

Learn to paint Moon Glow at 12:00 - 5:00 on Thursday March 7, at The Activity Center at 16902 N. Bridgeland Lake Pkwy.

All supplies provided, 8 x 10 canvas and acrylic paint for \$25. Please wear old clothes or bring an old tee shirt to wear over your clothes. Only 7 spots available contact Kathy Rowe at krowe003@att.net to reserve a seat.



Bridgeland Community Garage Sale

**Saturday
April 6th
8pm-12pm**

at Festival Park



Engaged to Learn. Empowered for Life.

We offer the highest quality Montessori education experience and are committed to the emotional, social, and educational growth of our children.

- Engaging Montessori approach
- Degreed and highly qualified, Montessori certified teachers
- Carefully prepared, secure indoor and outdoor environments
- Healthy and individualized, daily chef-prepared meals
- Enrichment through STEM, Language Immersion, Music, Art and Yoga classes
- Infant through 3rd Grade



**NOW ENROLLING FOR ALL PROGRAMS
at our new location in Towne Lake Cypress!**

**Schedule
your tour
today!**

silverlinemontessori.com

**Towne Lake Cypress
18434 Cypress North Houston Road
Cypress, Texas 77433
(281) 373-1200**

Silverline Montessori is accredited by the National Independent Private Schools Association (NIPSA) and AdvancED (SACS CASI), and affiliated with the American Montessori Society (AMS).

JOIN US FOR A **FREE DIGESTIVE HEALTH EVENT**

Our digestive health experts from Houston Methodist Willowbrook Hospital will discuss managing disorders, including:

- Acid reflux or chronic GERD
- Chronic constipation
- Colon issues
- Constant stomach discomfort
- Hemorrhoids
- Weight-related digestive issues

Our Presenters



Arturo Bravo, MD
Gastroenterology



Diego Marines, MD
Colon and Rectal Surgery



Todd A. Worley, MD
Bariatric and General Surgery

Tuesday, March 19 | 6 p.m.

Houston Methodist Willowbrook Hospital
18220 State Hwy. 249
Conference Center, 1st Floor
Houston, TX 77070

Refreshments and giveaways

To register, visit houstonmethodist.org/events or call 281.737.2500.

ST. AIDAN'S HOSTS ASHES TO GO

Ash Wednesday is around the corner, and the folks at St. Aidan's Episcopal Church are gearing up for their second annual Ashes to Go event.

"Last year was the first time we held Ashes to Go, and we had such a tremendous response," said the Rev. Les Carpenter, rector at St. Aidan's. "We had more than 160 people come through our drive-through prayer station, wanting to have ashes imposed on them and receive prayer. That's a visitor every six minutes. It was amazing.

"We had people come from all over our CyFair area. We even had some stop by in the morning and tell their friends about us, who showed up later in the day."

In addition to offering the Ashes to Go, St. Aidan's will host two traditional services, one at 6 a.m. and one at 7 p.m.

"We invite everyone in the community to visit us on Ash Wednesday, March 6," Carpenter said. "We will have prayer volunteers in our parking lot from 7 a.m. to 7 p.m. Twelve hours straight ... welcome to Lent.

"We also will be giving away our Lent in a Bag, which is designed to help families dive deeper into reflection during the Lenten season."

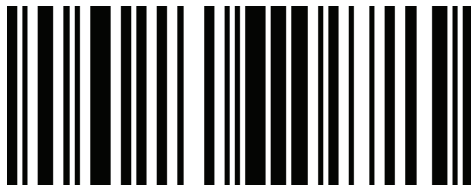
Ash Wednesday marks the start of Lent, which is the 46 days before Easter.

"Church-goers receive ashes on their forehead in the shape of a cross, as a reminder that we came from ashes and to ashes we will return," Carpenter said. "Lent is designed to be a period of reflection and renewal and return to God, leading up to Easter, where we celebrate the Resurrection of Christ."

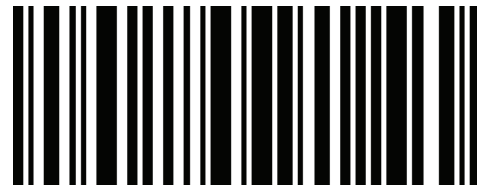
St. Aidan's is located at 13131 Fry Road, Cypress, Texas. For more information, please contact the church office or visit us at www.aidanschurch.org.



FIRST MONTH FREE
Unlimited "Best" Car Wash Membership*



8000749



8000811

*New memberships only

\$1 activation fee required. Expires 3/31/2019

   @quickquackhouston

www.TritonPools.net



Custom Swimming Pools
New Construction & Remodeling
Complete Outdoor Packages and Landscaping
PVR In-Floor Cleaning System
Authorized Installer



281-387-9708

Free Estimates!



**CYPRESS LAWN
& LANDSCAPING**

Commercial • Residential

Craig Herring • Owner **281-387-9708**

Landscape Design & Installation

Lawn Service

Sprinkler Systems — LI #9376

Tree Service

Outdoor Kitchens

Patio Covers

Patios & Walkways

Insured for your Protection - Free Estimates!



www.Cypresslawn.net



See a Live Butterfly Release!

11:30 am - 3:00 pm | Messiah Lutheran Church | Butterfly Family Festival
Sunday, March 31, 2019 | 11522 Telge Rd., Cypress, TX 77429

Come see a LIVE butterfly release, have some great food, and enjoy some family fun! Messiah Lutheran Church is hosting its annual Butterfly Family Festival on Sunday, March 31, 11:30 AM – 3:00 PM.

The event will include a BBQ lunch, silent auction, raffles for adults and children, games, and activities for all ages. Activities include an inflatable slide and basketball, cake walk, book walk, train on wheels, music with a local DJ, and an egg hunt for children ages 1 to 5 and another one for ages 6 to 10. Raffle items include a Ring Doorbell security system and a basket full of gift cards from local businesses. Tickets for all activities can be purchased that day. Craft booths are available for vendors; please call 281 807 0764 for details.

The day's events will benefit Chrysalis, A Grace Place for Children, by providing scholarships to families that attend our school and improvements to the playground. Chrysalis features a Christian preschool, after school, and summer camp programs. Chrysalis Christian Preschool admits students of any race, color, and national or ethnic origin. Call 281-807-0764 or go to www.messiahlc.org/events for further information.

Messiah Lutheran Church is a grace place, a congregation of the Evangelical Lutheran Church in America (ELCA). Messiah is located at 11522 Telge Road, ½ mile north of Highway 290. Regular Sunday worship times are: 8 am—Traditions; 9:30 am—The Gathering; and 10:45 am—The Crossing. The Discovery (education) Hour is 9:15-10:30 am on Sundays. For more information, 281-890-3013 or www.messiahlc.org. All people are welcome at Messiah.



PATIO COVERS | PERGOLAS | CARPORTS | PORTE COCHÈRES | OUTDOOR KITCHENS | DECORATIVE OUTDOOR FLOORING

VISIT OUR
WEBSITE FOR
INSPIRATIONAL
IDEAS



RAIN PROOF DESIGN



CUSTOM PATIO STRUCTURES

Committed to Quality, Value & Service



832.570.3990

www.custompatiostructures.com

FAMILY OWNED & OPERATED WITH OVER 20 YEARS EXPERIENCE
FREE ESTIMATES & DESIGN CONSULTATION • 100% FINANCING AVAILABLE



St. Joseph Altar & Spaghetti Luncheon



St. Joseph Altar & Spaghetti Luncheon will be held at Christ the Redeemer Catholic Church, located at **11507 Huffmeister Road in Houston, TX on Sunday, March 17th in the Parish Hall from 10:30 AM to 1:30 PM.** The event will include the beautiful Altar, honoring St. Joseph, the procession of little saints, as well as a delicious lunch. Lunch will include a traditional Sicilian meal of spaghetti, Italian green beans, salad, and bread. Tickets are \$7 for Adults,

\$4 for children. Children under 3 years of age eat free. In addition, there will be a bake sale which includes traditional Italian cookies, as well as homemade cakes. All proceeds for this event go to Cypress Assistance Ministries, to help the needy in our area. For more information, check out the Christ the Redeemer website at ctrcc.com

Proudly serving Katy, Cypress and Surrounding Areas!



Republic
gymnastics & dance

Located on Business Park Drive off of FM 529 just 1 mile East of 99/Grand Parkway
21227 FM 529 • 281-345-7555

Call For a FREE Trial Class!



GYMNASTICS: We offer classes for ALL Ages, Beginner - Advanced
Parent & Tot • Preschool • Girls • Boys • Ninja • Special Needs

TUMBLING: Ages 5 & up - Levels 1-5

DANCE: All Ages & Levels
Ballet • Tap • Jazz • Hip Hop • Acro • Combo Classes

Like us on facebook
@RepublicTX

Extra Events Parents' Night Out • Preschool Play Time
Tumbling Clinic • Birthday Parties

RepublicGymnastics.com • RepublicDanceCenter.com

WIRED
ELECTRICAL SERVICES

- Additional Plugs and Circuits
- Panel Upgrade / Replacement
- Smoke Detectors • TV Mounting
- Troubleshooting

**SAVE \$20
OFF YOUR
NEXT
SERVICE CALL!**

Cannot be combined with any other offer.
*Expires 4/1/19



713-467-1125 | wiredes.com

TECL 22809 Master 100394
Licensed & Insured • Family Owned & Operated

**Sore Throat, Fever or the Flu?
Excel Urgent Care is Here For You!**

(It's Cheaper and Faster)

Board Certified Physicians providing the following services and more:

- Non-life threatening acute adult and pediatric medical care
- School and sports physicals
- Occupational medicine and work-related services
- Drug screening and alcohol testing
- Digital X-ray services on-site
- Electronic prescriptions for your convenience



855-EXCEL-UC
www.excelurgentcare.com
Open Everyday 9 a.m. - 9 p.m.
(EXCEPT MAJOR HOLIDAYS)



EXCEL URGENT CARE
Your Neighborhood Urgent Care Center

25801 Hwy. 290, Cypress, TX 77429
@ Spring Cypress

Aeration Now Can Help Your Spring & Summer Irrigation



In order to prepare your lawn for a healthy spring growing season, you should employ basic lawn care practices at this time of year, which includes aerating your yard. It is important that nutrients reach the soil beneath your

grass, and aeration can help you get that done.

Aeration involves making small holes in the soil to allow air, water and nutrients to get to the grass roots.

This helps the roots grow deeper and produce a stronger, more vibrant lawn.

Aerating helps alleviate soil compaction. Compacted soils have too many solid particles in a space, which prevents proper circulation of air, water and nutrients within the soil. Excess lawn thatch or heavy organic debris buried under the grass surface can also starve the roots from these essential elements.

So when is the right time to get this aeration done? These next six to eight weeks leading up to the spring season, when grass begins to grow again, is a good time to aerate.

The two main aeration tools are the spike aerator and a plug aerator. The spike aerator poke holes in the ground with a solid piece of metal. Plug aerators remove a core or plug of grass and soil from the lawn. Most landscaping companies and horticulturists recommend the use of the plug aerator. The machines can be rented or you can have a lawn care service aerate for you. After aerating, it's always a good idea to apply about a half-inch of compost over the aerated yard. The compost fills in the holes left by the plug aerator and brings organic materials into the root zone.

If you have noticed that your turfgrass isn't looking its best or that water has difficulty penetrating through the soil surface, it may be time to aerate your lawn. Lawns with clay soils that get a lot of foot traffic typically require aeration more often as they become compacted over time. Here's a great tip to check to see if your yard needs to be aerated.

Using a shovel, dig a square-foot section of grass about six inches deep and take a look at it. If the grass roots don't extend further than two inches deep into the soil, your lawn would benefit from aeration.

If you plan to aerate your own yard, here are a few helpful tips to get the job done.

- Before you get started, make sure the soil is moist enough. There's nothing more frustrating than trying to aerate soil that is bone dry. Aerating the day after a rain shower or watering your lawn the day before is advised.

- Most aeration machines cover only a small percentage of soil surface per pass, so make multiple passes over the most compacted areas. Save resources (and your energy) by leaving unaffected areas alone.

- The soil plugs can be left on the ground after aeration and allowed to decompose. Or, you can rake them into piles to throw in the compost bin. However, this isn't necessary as it should take about two to four weeks for the soil cores to break down naturally. Sprinkle compost (sand or peat moss can be used instead of compost) over the lawn to fill in the holes.

- An aeration myth is that if you apply a pre-emergent herbicide on your lawn in the spring, aerating your lawn will destroy the herbicide "barrier." This is not true — research shows that aeration will not affect crabgrass control or weed prevention.

After aerating, it's important to continue appropriate lawn care practices.

Aerating will help you save water over the spring and summer seasons. Instead of running off or only penetrating a few inches, water will be better absorbed in an aerated yard. That makes your entire landscape and your water bill happier.

Did you know...

According to the U.S. Environmental Protection Agency, outdoor water use varies greatly depending upon geographic location. In dry climates such as that in the Trinity Glen Rose District, a household's outdoor water use can be as high as 60 percent. Some experts estimate that as much as 50% of that irrigation water is wasted due to inefficient watering techniques, wind and evaporation.



BAYSIDE LANDSCAPE SERVICES, INC.

"We have been in your back yard for the past 21 years! Please give us a call and we can help you with your next landscape project."

Offices located at 6102 Brittmoore Rd

713.783.1976

www.baysidelandscape.com

Email: dwayne@baysidelandscape.com

"We specialize in Residential Landscape Only"

- Flagstone Patios • Brick Paver Patios
- Landscape Design & Installation
- Sprinkler Systems Installed & Repaired • Low Voltage LED Landscape Lighting
- 4", 6" & 8" PVC Drainage Systems
- Tree Removal




Blessings for Food Pantry & Children: Messiah Lutheran's Community Garden

Why are people growing little plants under lights in their dining room? Why are other people growing 35 sweet potatoes in pots on their porch? It might seem suspicious or odd, but these people are getting ready for the spring planting at Messiah Lutheran's Community Garden.

Mike Strickler notes, "It is awesome to be part of this team project. Besides delighting in God's creation, we donate these vegetables and fruits to Cypress Assistance Ministries (CAM). We recognized a need for fresh produce for those who are less fortunate and decided to use our varied talents to make a difference." In the past year, over 365 lbs. of fresh produce were donated.

Imagine the weight of crates filled with produce or the smell of cilantro filling the car. When Diana and Mike Kalb witnessed these deliveries to CAM, they were filled with pride and joy. They understood the hard work of preparation, planting, and harvesting that had been involved.

Henry Lombrana, the Director of the Food Pantry at CAM, notes that clients love having fresh produce, instead of only canned goods. This option is not available at some other food pantries. Fortunately, CAM's partners like Messiah Lutheran and some local grocery stores provide fresh vegetables and fruits, which are otherwise too expensive for a limited budget. Also, CAM has "Special Delivery" clients (mostly seniors or individuals with disabilities) who appreciate receiving fresh produce. These items are a God-send, especially if they are on low-sodium or low-sugar diets and cannot use most of the canned goods at the food pantry.

Gardening also evokes good memories of working with soil, mulch, and plants for many people. If you like getting your hands dirty, come and join us in tending to God's creation. If you want to learn more about gardening, take some free classes from our master gardener, Ron Richter, and maybe make small plots in your own yard. These classes are offered on a regular basis.

Messiah's Chrysalis Preschool has their own bed in the Community Garden, and Messiah members have developed a preschool. Why are people growing little plants under lights in their dining room? Why are other people growing 35 sweet potatoes in pots on their porch? It might seem suspicious or odd, but these people are getting ready for the spring planting at Messiah Lutheran's Community Garden.

Mike Strickler notes, "It is awesome to be part of this team project. Besides delighting in God's creation, we donate these vegetables and fruits to Cypress Assistance Ministries (CAM). We recognized a need for fresh produce for those who are less fortunate and decided to use our varied talents to make a difference." In the past year, over 365 lbs. of fresh produce were donated.

Imagine the weight of crates filled with produce or the smell of cilantro filling the car. When Diana and Mike Kalb witnessed

(Continued on Page 12)

*Come join a community of
Faith, Hope & Love @*

FAITH City
C H U R C H

SUNDAYS

10AM

Where families find a home



**POPE ELEMENTARY
BRIDGELAND**

936.649.4026

www.faithcitychurchcypress.com

EASTER

April 21st @10AM

"The Greatest Love Story"

An Easter Production

FREE BBQ

EGG HUNT

PICTURE WITH JESUS

**COME CELEBRATE
JESUS WITH US!
A EVENT THE WHOLE FAMILY
WILL ENJOY!!**



WWW.FAITHCITYCURCHCYPRSS.COM

(Continued from Page 11)

these deliveries to CAM, they were filled with pride and joy. They understood the hard work of preparation, planting, and harvesting that had been involved.

Henry Lombrana, the Director of the Food Pantry at CAM, notes that clients love having fresh produce, instead of only canned goods. This option is not available at some other food pantries. Fortunately, CAM's partners like Messiah Lutheran and some local grocery stores provide fresh vegetables and fruits, which are otherwise too expensive for a limited budget. Also, CAM has "Special Delivery" clients (mostly seniors or individuals with disabilities) who appreciate receiving fresh produce. These items are a God-send, especially if they are on low-sodium or low-sugar diets and cannot use most of the canned goods at the food pantry.

Gardening also evokes good memories of working with soil, mulch, and plants for many people. If you like getting your hands dirty, come and join us in tending to God's creation. If you want to learn more about gardening, take some free classes from our master gardener, Ron Richter, and maybe make small plots in your own yard. These classes are offered on a regular basis.

Messiah's Chrysalis Preschool has their own bed in the Community Garden, and Messiah members have developed a preschool curriculum, which passes on the legacy of gardening.

They really like being outside and having hands-on learning. They are excited to work their own plot, water the plants, and harvest the goods. Plus, the children get to taste different varieties of vegetables and to take a baggie of delicious home-grown produce to share with their families. Given that a theme this summer is "Garden to Table," some kids might be imagining their own garden one day!

Gardening is special in so many different ways. Messiah Lutheran is deeply grateful to connect with God's creation and care for God's people with their Community Garden.




THE HEART OF INNOVATION

Setting the pace for cardiovascular care in Greater Houston.

At Memorial Hermann, our team of world-renowned, affiliated heart physicians provides innovative cardiovascular care – from revolutionary new medications, to minimally invasive procedures for correcting atrial fibrillation or repairing heart valves to innovations in heart and lung transplants. These cutting-edge solutions are less traumatic and aim to reduce a patient's pain and recovery time. Our innovations are putting Memorial Hermann at the forefront of advancing heart health in Greater Houston and helping our patients lead a better quality of life.

Learn more about heart care at Memorial Hermann Cypress Hospital at heart.memorialhermann.org

MEMORIAL
HERMANN

ADVANCING HEALTH

We Are Your Cypress Real Estate Professionals

We have a saying at Martha Turner Sotheby's International Realty...**Luxury is not a price point, but a level of service.** Our agents understand what makes a home unique and are adept in the art of uniting buyers and sellers. **We want to be your Realtor®.**



Lisa Adams
281.330.4342



Dedic Benitez
713.927.3430



Linda Brewer
832.276.1050



Tammy Downey
832.766.7866



Janet Dreyer
832.326.6025



Katie Elsbury
281.546.3672



Deena Everest
713.705.7041



Deanna French
832.865.6652



Martha Gomez
281.989.9590



Debbie Hassenmiller
713.444.1789



Teresa Henderson
281.217.0211



Johnny B. Holloway
281.932.7377



Margo Horton
713.553.3809



Brandon Newton
713.890.9108



Linda Plant
713.240.5813



Mattie Provost
281.389.3122



Annette Swonke
713.305.2505



Paulette Blackwood Tate
832.687.0410



Maggie Vazquez
832.314.3145



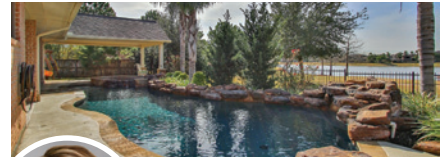
Amy Yoder
281.744.0678



CYPRESS
Rosenfield Reach | \$740s
4-5/4 - ±4,170 sf
Bridgeland stucco home on the water | media room
Paulette Blackwood Tate | 832.687.0410



CYPRESS
Rockview Ledge Lane | \$650s
5/5.5 - ±4,788 sf
Towne Lake dream home
master down | covered patio
Maggie Vazquez | 832.314.3145



CYPRESS
China Blue Lane | \$590s
5/4.5 - ±4,821 sf
Fairfield beauty on the lake
resort-style pool/spa
Paulette Blackwood Tate | 832.687.0410

832.653.4900
sothebyshomes.com

Martha Turner | **Sotheby's**
INTERNATIONAL REALTY

Sotheby's International Realty and the Sotheby's International Realty logo are registered (or unregistered) service marks used with permission. Operated by Sotheby's International Realty, Inc. Real estate agents affiliated with Sotheby's International Realty, Inc. are independent contractor sales associates and are not employees of Sotheby's International Realty, Inc. Equal Housing Opportunity.

The Times is a private publication published by Peel, Inc. It is not sanctioned by any homeowners association or organization, nor is it subject to the approval of any homeowners association or organization, nor is it intended, nor implied to replace any publication that may be published by or on behalf of any homeowners association or organization. At no time will any source be allowed to use The Times contents, or loan said contents, to others in anyway, shape or form, nor in any media, website, print, film, e-mail, electrostatic copy, fax, or etc. for the purpose of solicitation, commercial use, or any use for profit, political campaigns, or other self amplification, under penalty of law without written or expressed permission from Peel, Inc. The information in the newsletter is exclusively for the private use of Peel, Inc. The Times is an independent publication serving the Bridgeland® community. Bridgeland is a registered trademark of Bridgeland Development, L.P.

DISCLAIMER: Articles and ads in this newsletter express the opinions of their authors and do not necessarily reflect the opinions of Peel, Inc. or its employees. Peel, Inc. is not responsible for the accuracy of any facts stated in articles submitted by others. The publisher also assumes no responsibility for the advertising content with this publication. All warranties and representations made in the advertising content are solely that of the advertiser and any such claims regarding its content should be taken up with the advertiser.

* The publisher assumes no liability with regard to its advertisers for misprints or failure to place advertising in this publication except for the actual cost of such advertising.

* Although every effort is taken to avoid mistakes and/or misprints, the publisher assumes no responsibility for any errors of information or typographical mistakes, except as limited to the cost of advertising as stated above or in the case of misinformation, a printed retraction/correction.

* Under no circumstances shall the publisher be held liable for incidental or consequential damages, inconvenience, loss of business or services, or any other liabilities from failure to publish, or from failure to publish in a timely manner, except as limited to liabilities stated above.

BUSINESS CLASSIFIEDS

WE WANT TO CLEAN YOUR HOME - References available. Insured. Bonded. Family owned since 1987. Free Estimates. Fans and blinds included. Need just floors or kitchen or bathrooms cleaned? No problem. Call us at 281-859-3162 for details.

Business classifieds (offering a service or product line for profit) are \$50, limit 40 words, please contact Peel, Inc. Sales Office at 512-263-9181 or advertising@PEELinc.com

GO **GREEN**
GO **PAPERLESS**



Sign up to
get this
newsletter
in your
inbox! Visit
peelinc.com
for details.

Thank You
For Trusting Us With
Your Family!

281.758.2790

www.cypresskidsdentist.com

13611 Skinner Road, Suite 135
Cypress, Texas 77429 (Skinner at Spring Cypress)



infants children teens



NEWMARK HOMES

BRIDGELAND

SHOWCASE HOME
POOL BUILDER



MADDOX

CUSTOM POOLS & LANDSCAPING

281.232.4100

WWW.MADDOXCUSTOMPOOLS.COM



PEEL, INC.

308 Meadowlark St. South
Lakeway, TX 78734

PRSRT STD
U.S. POSTAGE
PAID
PEEL, INC.

BG



RYAN McLENNAN

Bridgeland Resident

832.816.8345

ryanmcclennan.realtor@gmail.com

Ellis Nabors
TEAM
Together We're Better.

www.EllisNaborsTeam.com



CLINT NABORS

Team Leader

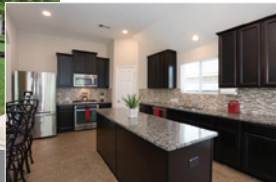
832.457.1103

clintnabors@gmail.com

Superior Service Is Our Focus!



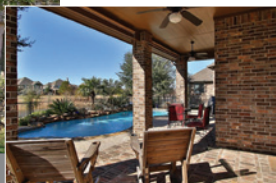
12302 Meadow Breeze Drive



12223 Meadow Breeze Drive



12319 Terrace Cove Lane



20 RISING
STARS
UNDER 40 IN REAL ESTATE

**Better
Homes
and Gardens.**
REAL ESTATE

TOP 25
residential
real estate
AWARDS
HOUSTON BUSINESS JOURNAL

**GARY
GREENE**

©2019 Better Homes and Gardens Real Estate LLC. Better Homes and Gardens® is a registered trademark of Meredith Corporation licensed to Better Homes and Gardens Real Estate LLC. Equal Opportunity Company. Equal Housing Opportunity. Each Franchise is Independently Owned and Operated.