

# Silverlake

news

Silverlake Homeowner's Association, Inc. Newsletter

June 2019 • Volume 11, Issue 6

# SAVE THE DATE FOR THE ANNUAL JULY FOURTH CELEBRATION

The annual Silverlake picnic and celebration will take place at the Silverlake HOA clubhouse on Saturday July 6, 2019 from 11 AM until 1 PM. Fun, food and festivities will be available for all who attend. Watch for more information about menu items and the Annual Baking Contest guidelines. Please bring a non perishable food item as your admission ticket. These items will be donated to the Pearland Food Pantry for needy families.



## IMPORTANT NUMBERS

Police/Fire/Ambulance Emergency.....911  
 Brazoria County Sheriff Non-Emergency.....281-331-9000  
 Poison Control .....800-222-1222  
 Texas Pride Disposal Waste Mgmt .....281-487-5000  
 .....www.texaspridedisposal.com  
 SiEnvironmental (Water - MUD 3 & 6) .....832-490-1600  
 Severn Trent (Water - MUD 2) .....281-578-4200  
 Center Point Energy (street lights need 6 digit #)...713-207-2222  
 .....www.centerpointenergy.com/outages  
 Brazoria County Mosquito Control.....281-331-6106 Ext. 1532  
 Brazoria County Animal Control .....281-756-2265  
 Brazoria County Road & Bridge (street & curb repairs) .....  
 .....281-331-3197  
 Call Before You Dig.....800-245-4545  
 Center Point Energy (gas) .....713-659-2111  
 Pearland Post Office.....281-485-5278

## SILVERLAKE HOA INFO

Daniel Harris, CMCA, AMS - Community Manager  
 Crest Management Company Silverlake office location  
 10100 Broadway St #110  
 Pearland, Texas 77584

daniel.harris@Crest-Management.com  
 281-272-6377 Office  
 www.crest-management.com

**HOA website: [www.SilverlakeHOA.com](http://www.SilverlakeHOA.com)**

Nathaniel Griffin - Assistant Manager  
 281-272-6375

nathaniel.griffin@crest-management.com

**Clubhouse Rentals contact**

**Silverlake Onsite Office at [SilverlakeHOA@crest-management.com](mailto:SilverlakeHOA@crest-management.com)**

## NEWSLETTER INFO

### EDITOR

To Submit Articles/News.....sylviaskotak@gmail.com

### PUBLISHER

Peel, Inc .....www.peelinc.com, 888-687-6444

Advertising .....advertising@peelinc.com, 888-687-6444

### ARTICLE INFO

The Silverlake News is mailed monthly to all Silverlake HOA residents. Residents, community groups, schools, etc., are welcome to submit information. Personal news is also welcome. All submissions will be reviewed for content and approved by the Board of Directors and Newsletter Committee Chair. The deadline for submission is the 8th of the month before publication.



## Dive in Movie Nights

**Saturday June 15th**  
*"Big Hero 6"*

**Saturday July 6th**  
*"How to Train Your Dragon"*

**Saturday August 17th**  
*"The Golden Compass"*

# GO GREEN



Receive your newsletter in your inbox

For details go to  
[www.PEELinc.com](http://www.PEELinc.com)  
 and click the RESIDENTS tab





**Silverlake Annual  
July 4th Picnic  
HOA Baking Contest**



**Saturday,  
July 6th  
11am to 2pm**

Categories

Cake, Cookies, Cupcakes, Brownies

Judge's Criteria

Creativity, Taste, Appeal, Presentation

**Bring your entries to the HOA Clubhouse by 12:45 pm for  
judging by 1:30pm**

**Fill out the form to enter.  
Form available online on page 8**

## Silvercrest PTA

**SUMMER IS HERE!** School is out but the PTA is still at work getting ready for our next school year. Enjoy sleeping in, spending time with your family and having fun in the sun. We will see you in August!

Are you interested in a bigger role within our PTA?

**Do you want to help keep our kids' school one of the best in the Houston area?**

Sign up to be a PTA chair!

Open positions for the 2019-20 school year:

President Elect

2nd Vice President - Programs

Council Delegate

Family Fun Nights

Fourth Grade Recognition

Grants

Legislative

Male Volunteers in Public Schools (MVIP)

Stampede Auction

Stampede Breakfast

Stampede Run

Stampede Sponsorship

Student Directory

A description of these positions are available in the Standing Rules

located in the Documents folder on PTAVenue. Please consider joining us!

### Spring Fundraiser

The Silvercrest PTA hosted our spring fundraiser with Boon Supply Company from April 15th-26th! Our awesome students and parents raised over \$9000 for our school and all of the great PTA programs throughout the year. The PTA will also be donating a wonderful gift to the school! Thanks for all of your support and participation!

### School Supplies for 2019-2020

Silvercrest PTA has made possible online purchasing of school supply packs through June 16 (late orders June 18 - July 7). Go to <http://www.educationalproducts.com/shoppacks>. Our school ID is SIL033. School supplies will be shipped to your home by August 2. Save time and avoid the crowds in the stores with this convenient online option!

### Box Tops

Please keep clipping Box Tops over the summer for our next school year! Don't forget to visit Randall's customer service to link your loyalty card to Silvercrest PTA as a charity partner.

### Buildings & Grounds Update

Greetings all from the Silvercrest garden. As we are wrapping up the  
(Continued on Page 5)

**QUALITY A/C SERVICE  
AT A PAYLESS PRICE!**

• A Name You Can Trust •  
Sales, Service & Installation



Family Owned And Operated  
**PAYLESS**  
COOLING & HEATING  
Residential & Commercial  
We Live In Pearland Too! • Shop Local

**FREE ESTIMATES & SECOND  
OPINIONS ON  
REPLACEMENT EQUIPMENT**

**\$20  
OFF**

**Any Repairs**

With Coupon Only. Expires 06/30/19.

**\$20  
OFF**

**AC Check-Reg \$69.99 Excludes Saturday's**

With Coupon Only. Expires 06/30/19.

**www.paylesscooling.com**



Insured & Bonded  
TACLA022850E



**281-AC SERVICE  
281-227-3784**

*Local &  
Convenient To  
Your Area!*

**281-480-COOL  
281-480-2665 (Clear Lake)**

(Continued from Page 4)

school year the Building & Grounds committee would like to thank Missy Locklear for her enduring dedication to the advancement of our PTA. We would also like to thank Mr. Kim Terry (Mrs. Jordan's dad) for all the help he provided us this year. As we wrap this year up we hope your child has enjoyed the garden and watching their plants grow!

**Over the summer we will be busy with many upgrades & projects:**

- The PTA has reached out the a sprinkler company Rachio, and they have graciously donated a water conservation sprinkler control panel. I believe this will go hand in hand with the schools project of replacing the water fountains for newer ones that help the students conserve water and have bottle fill stations!

- We will be planting some colorful foliage by the front marquee to add a new and fresh look for the new school year!

- Also, the third grade class has planted watermelon seeds in their fourth grade planter box. Hopefully when they return back to school they will have watermelons to pick and share.

Finally, the Building & Grounds Committee has decided to add "Chalk the Walk" as part of our annual budget to continue the tradition. We will purchase all necessary chalk and will organize the day and time. So please keep an eye out as the new school year approaches!

**Thanks again everyone and happy gardening!**



## Help Keep Our Neighborhood Beautiful!



The Silver Star Group  
at  
RE/MAX Top Realty

www.thesilverstargroup.com  
Experienced Realtors

**Get in step** with the crowd and call one of our team members to help with your real estate needs. Selling, buying, leasing, residential, commercial, land or property management. We can lead you in the right direction.

Sylvia Skotak - 713-894-9415

Tom Johnson - 832-661-9989

La Jonda Mc Coy - 832-885-4435

Vince Kearney - 832-428-6207



**WIRED** | **GENERATORS**  
ELECTRICAL SERVICES | by **WIRED**

**Residential & Commercial**  
Family Owned & Operated

### Home Standby Generators

- ✓ Installation
- ✓ Maintenance
- ✓ Services & Repair

**713-467-1125**

generatorsbywired.com

**\$20 OFF** Your Next Service Call!  
Not to be combined with any other discount or offer. Expires 7/1/2019



VISA, MasterCard, Discover, American Express, BBB  
Master #100394 TECL #22809



## Still on the Fence About Hosting an Exchange Student?

You don't have any kids? Are you a single parent? Same sex couple? An empty nester? This is not a problem, we place our students in all kinds of families!

You're not rich? Neither am I! Your exchange student comes with their own spending money and health insurance. All you provide is room/board and three meals a day. Oh and TLC... but that's free.

Live in the middle of no where? Small town? Not a big deal. Some kids prefer to get away from the hustle and bustle of big cities. The exchange students also do pretty well in small schools, as they usually get to be the center of attention and make friends rather quickly. Our students also get chances to travel to New York, Washington DC, Hawaii and California... so they can get their fill of the city life and return back to the peaceful sounds of nature.

Do you consider yourself a boring person? More than likely this is not true, and you should quit being so hard on yourself. Your student will make friends. Your student will meet other exchange students. Your student will attend activities offered by our program. Your student will get involved in sports and

school clubs. Your purpose is not to entertain them. But you might find that you bring a little adventure to each others lives.

Kids are too young? Great! Lots of students love young kids, and your kids will love them. It's beneficial to introduce your kids to new cultures at a very young age. You're preparing them to accept people no matter what the religion, color of their skin, or language they speak. That my friend, is good parenting.

Don't hold back! This is a gret experience for both parties. You get the opportunity to change a child's life. You get the satisfaction of seeing them grow, even after they leave your home into becoming a doctor, a lawyer, a diplomat, artist, teacher...the list goes on. And you contributed to that success! And the best part of it all, is you gain another family member for life. We need people like you to give these kids a chance.

STS Foundation is a 501(c)(3) organization whose mission is to place exchange students in our area. If you are interest in hosting, please contact me at 832-455-7881 or at vicki.stsfoundation@yahoo.com. I'll be happy to answer any question you might have and get you started on hosting your very own student!



## AFFORDABLE SHADE PATIO COVERS

*Creating Comfort for Outdoor Living...  
with Affordable Shade.*



*We obtain City Permits,  
TDI Windstorm Certification,  
and help with HOA Approvals.*

*Call to schedule a free estimate.*

# 713-574-4648

*Visit our website to view more designs.*

## AffordableShade.com

### Custom Patio Covers

**Cedar & Treated Pine Shade Arbors**

**Aluminum Patio Covers & Arbors**

**Palapas & Tiki Huts & Screen Rooms**

**Decorative & Structural Concrete**



**Financing Available\* with Payments as Low as \$250**

*\*Subject to Credit Approval*



United States  
**Census  
2020**

**APPLY ONLINE NOW! [2020census.gov/jobs](https://2020census.gov/jobs)**

**2020 Census jobs provide:**

- ✓ Great pay
- ✓ Flexible hours
- ✓ Weekly pay
- ✓ Paid training

Thousands of jobs are available nationwide, and many are near you.  
Help support your community by being a Census Taker.

For more information or help applying, please call

**1-855-JOB-2020**

The U.S. Census Bureau is an Equal Opportunity Employer.

**GO GREEN  
GO PAPERLESS**



**Sign up to  
get this  
newsletter  
in your  
inbox! Visit  
[peelinc.com](https://peelinc.com)  
for details.**

At no time will any source be allowed to use The Silverlake News contents, or loan said contents, to others in anyway, shape or form, nor in any media, website, print, film, e-mail, electrostatic copy, fax, or etc. for the purpose of solicitation, commercial use, or any use for profit, political campaigns, or other self amplification, under penalty of law without written or expressed permission from Peel, Inc. The information in the newsletter is exclusively for the private use of Peel, Inc. and the Silverlake HOA.

**DISCLAIMER:** Articles and ads in this newsletter express the opinions of their authors and do not necessarily reflect the opinions of Peel, Inc. or its employees. Peel, Inc. is not responsible for the accuracy of any facts stated in articles submitted by others. The publisher also assumes no responsibility for the advertising content with this publication. All warranties and representations made in the advertising content are solely that of the advertiser and any such claims regarding its content should be taken up with the advertiser.

\* The publisher assumes no liability with regard to its advertisers for misprints or failure to place advertising in this publication except for the actual cost of such advertising.

\* Although every effort is taken to avoid mistakes and/or misprints, the publisher assumes no responsibility for any errors of information or typographical mistakes, except as limited to the cost of advertising as stated above or in the case of misinformation, a printed retraction/correction.

\* Under no circumstances shall the publisher be held liable for incidental or consequential damages, inconvenience, loss of business or services, or any other liabilities from failure to publish, or from failure to publish in a timely manner, except as limited to liabilities stated above.

## HOUSTON METHODIST IMAGING CENTER IN PEARLAND

HOUSTON  
**Methodist**  
IMAGING CENTER

Houston Methodist Imaging Center in Pearland is equipped with state-of-the-art technology, providing superior quality images to facilitate the most accurate diagnoses and treatment plans. The imaging center also offers easy scheduling with same-day results and complimentary parking for patients and family members.

We accept more than 75 insurance providers and offer a full range of advanced imaging services, including:

- 3 Tesla wide-bore MRI
- Barium studies
- Ultrasound
- 64-slice CT
- Bone mineral densitometry
- X-ray
- Arthrography
- Fluoroscopy



8520 W. Broadway St., Suite 110  
Pearland, TX 77584  
Monday-Friday, 8 a.m.-5 p.m.

Schedule your imaging appointment today.  
Call **713.363.8650** or fax your request  
to **281.485.4540**.



# Silverlake

---

*Silverlake HOA Baking Contest  
July 6, 2019 Silverlake Clubhouse & Pool  
2715 Southwyck Parkway*

## *Entry Form*

*Name* \_\_\_\_\_ *Phone* \_\_\_\_\_

*Address* \_\_\_\_\_

*Age* \_\_\_\_\_ *(if younger than 16 years)*

*Category*   *Cake*   *Cookie*   *Brownie*   *Cupcake*   *(circle one)*

*Original recipe*                      *Cookbook recipe*    *(circle one)*

*Please attach recipe*

*Criteria will be judged on a 5 point scale for the following 4 categories:*

*Creativity*

*Taste*

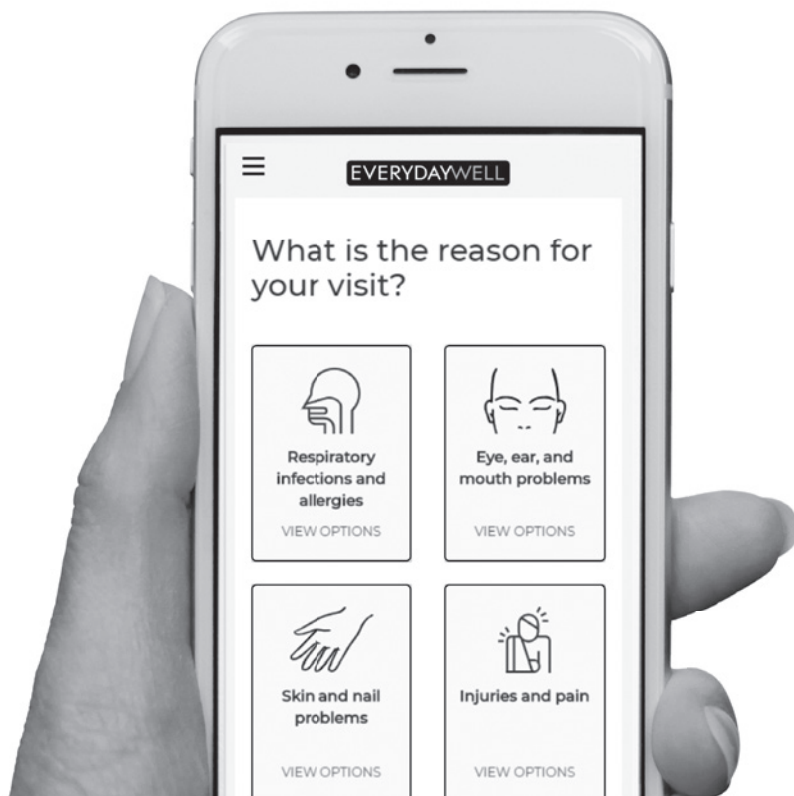
*Presentation*

*Appeal*

*Baked goods must be received at the Bake Off booth inside the clubhouse, no later than 12:45 PM. Please do not enter food that requires refrigeration or melts easily. You will be assigned a number corresponding to your entry. The judges will not know the name of the contestants and will judge by entry number only. Cash prizes will be awarded for each category. Judging will occur at 1:30 PM. You will be notified by phone if you are a winner.*



EVERYDAYWELL



## Sick? Diagnosis & Treatment Plan Within 30 Minutes.

**eVisits: Answer questions online for fast, convenient care.**

For minor illnesses. No appointment necessary.

1. Just log into your Everyday Well account.
2. Complete an online questionnaire about your symptoms.
3. Receive a response from a healthcare provider within 30 minutes with a diagnosis and treatment plan.

**\$25\* eVISITS ARE A CONVENIENT SOLUTION TO ACCESS HEALTH CARE FOR:**

Allergies • Colds • Digestive Issues • Skin Issues • Urinary Tract Infections

\*\$15 for Memorial Hermann Health System employees on the Memorial Hermann Health Insurance Plan.



Download our Everyday Well App  
or log in at [EverydayWell.com/eVisit](https://EverydayWell.com/eVisit)

MEMORIAL  
HERMANN

ADVANCING HEALTH

## Millipedes

Millipedes are often mistaken for worms. While millipedes have elongated bodies similar to worms, they have lots of legs which worms lack. Millipedes have a long, cylindrical body, a pair of antennae and two pair of legs on each segment of their body. They often curl into a spiral as a way to protect themselves when threatened.

Millipedes live in moist environments such as soil, leaf litter, and compost piles, under mulch, rocks or wood. Millipedes most often feed on decaying organic matter, though some are carnivorous. They are not typically thought of as pests, but more of a nuisance although they may occasionally damage seedling plants by feeding on stems and leaves.

Large numbers of millipedes may move into structures after heavy rainfall or during periods of drought. If millipedes do wander indoors, they usually die quickly due to lack of moisture.

Tips to prevent millipedes from moving indoors:

- Move objects providing harborage (compost piles, firewood, stones) away from structures
- Create a band of gravel between the home foundation & landscape beds
- Adjust watering schedules if overwatering
- Turn mulch so it dries out
- Seal accessible areas where millipedes can move into the home- around doors & windows; pipe penetrations, etc.
- Ventilate crawl spaces to allow for air flow

For more information or help with identification, contact Wizzie Brown, Texas AgriLife Extension Service Program Specialist at 512.854.9600. Check out my blog at [www.urban-ipm.blogspot.com](http://www.urban-ipm.blogspot.com)

This work is supported by Crops Protection and Pest Management Competitive Grants Program [grant no. 2017-70006-27188 /project accession no. 1013905] from the USDA National Institute of Food and Agriculture.

The information given herein is for educational purposes only. Reference to commercial products or trade names is made with the understanding that no discrimination is intended and no endorsement by Texas A&M AgriLife Extension Service or the Texas A&M AgriLife Research is implied.

The Texas A&M AgriLife Extension Service provides equal access in its programs, activities, education and employment, without regard to race, color, sex, religion, national origin, disability, age, genetic information, veteran status, sexual orientation or gender identity.



## Attention Parents of Graduating Seniors!

We would like to recognize our graduating seniors by including a small picture and a few lines about where your child will be attending college. Please send your information to [articles@peelinc.com](mailto:articles@peelinc.com) (include the newsletter you would like to recognize them in, photo, name, etc).



# DID YOU SAY FREE?

**YES! YOUR NEWSLETTER IS  
PROVIDED 100% FREE OF CHARGE**

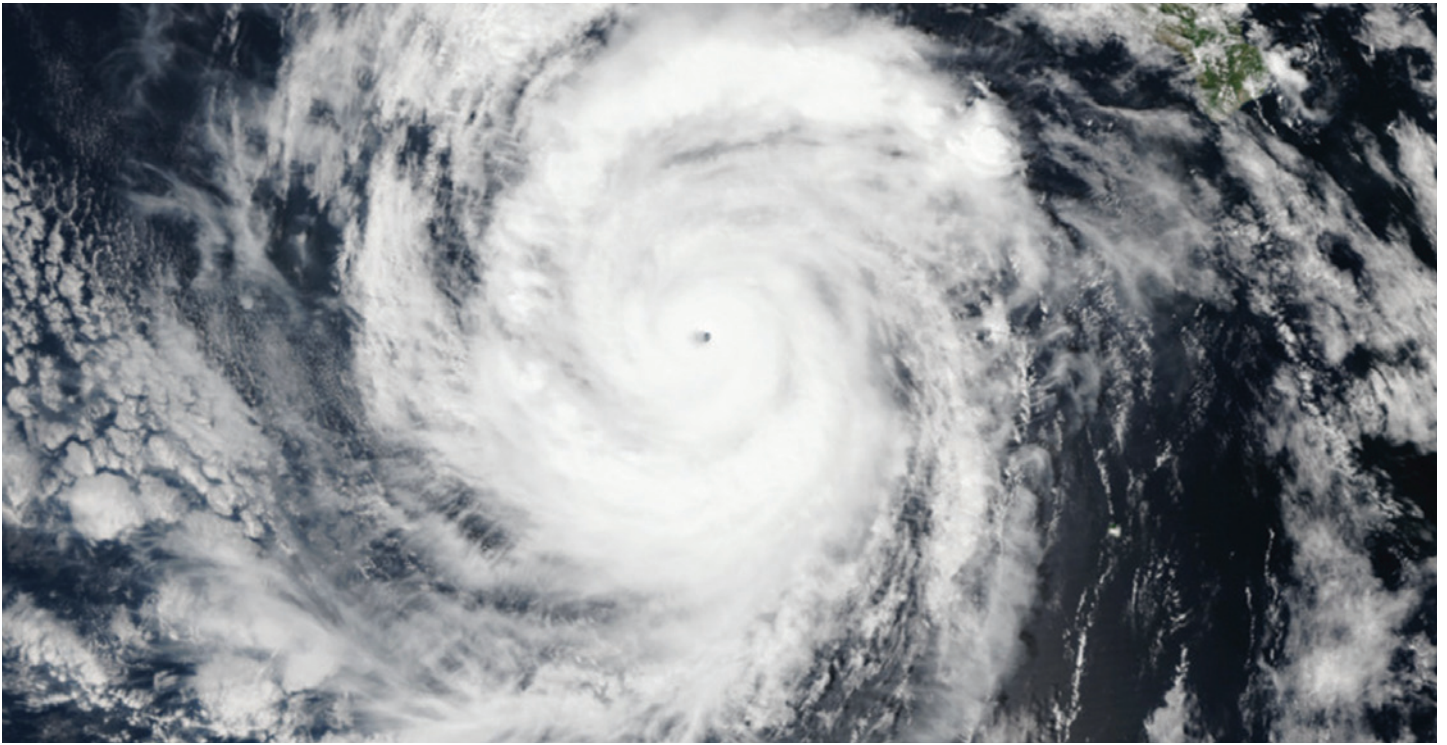
and is made possible by the advertisers within. Please frequent their businesses and let them know where you saw their advertisement. While there, be sure to say "Thanks!"

[www.PEELinc.com](http://www.PEELinc.com)

**PEEL, INC.**  
community newsletters



## Hurricane Preparedness



Each year NOAA and the American Red Cross publishes a preparedness guide of tropical cyclones to help us prepare for such an emergency. You can download a copy of that guide at <http://www.nws.noaa.gov/os/hurricane/resources/TropicalCyclones11.pdf>. This guide gives great information on the metrological terms associated with tropical storms and what to expect from those storms. Most importantly, it lists critical information about how to prepare for an incoming storm.

Guidelines each year prior to hurricane season:

- Determine safe evacuation routes inland
- Learn locations of official shelters
- Check emergency equipment such as flashlights, generators and battery powered equipment such as cell phones and your NOAA Weather Radio All Hazards receiver.
- Buy food that will not spoil and store drinking water.
- Buy plywood or other material to protect your home if you don't have it.
- Trim trees and shrubbery so branches don't fly into your home.
- Clear clogged rain gutters and downspouts.
- Decide where to move your boat if applicable.
- Review your insurance policy.
- Find pet friendly hotels on your evacuation route.

During the storm and when Pearland is in the warning area, you should:

- Closely monitor radio, TV or NOAA Weather Radio All Hazards for official bulletins.
- Close storm shutters.

- Follow instructions issued by local officials. Leave immediately if ordered.

- Stay with friends or relatives at a low-rise inland hotel or at designated public shelter outside of the flood zone.

- DO NOT stay in a mobile home or manufactured home.

- Notify neighbors and a family member outside of the warned area of your evacuation plans.

- Take pets with you, but remember that most public shelters do not allow pets other than service pets for people with disabilities.

- Identify pet friendly hotels along your evacuation route.

If you are staying home to "hunker" out the storm:

- Turn refrigerator to maximum cold and keep it closed.

- Turn off utilities if told to do so by authorities.

- Turn off propane gas tanks.

- Unplug small appliances.

- Fill bathtub and large containers with water in case clean tap water is unavailable. Use water in bathtubs for cleaning and flushing only. Do NOT drink it.

- Stay away from windows and doors, even if they are covered. Take refuge in a small interior room, closet or hallway.

- Close all interior doors. Secure and brace exterior doors.

- If you are in a two-story house, go to an interior first floor room.

- If you are in a multi-story building and away from water, go to the first or second floor and stay in the hallways or other interior rooms away from windows.

- Lie on the floor under a table or other sturdy object.





PEEL, INC.

308 Meadowlark St. South  
Lakeway, TX 78734

PRSRT STD  
U.S. POSTAGE  
PAID  
PEEL, INC.

SLV

# The Cindy Cristiano Team



**RE/MAX**  
TOP REALTY



*Cindy Cristiano*

TEAM LEADER, REALTOR

**713-733-8200**

*Allison Ator*

BUYER SPECIALIST

**713-733-8200**

**The Strength of Teamwork...The Reputation For Results!**

**Moving Sellers & Buyers Since 1991 • [www.MoveWithCindy.com](http://www.MoveWithCindy.com)**