

The RANCH REVIEW

July 2019 Volume 13, Issue 07

News for the Residents of Legends Ranch

Recognize a Great Neighbor



Every day, we hear inspiring and touching stories about our Legends Ranch neighbors supporting and improving our community in a variety of ways. Whether it's collecting trash from around our lakes and common areas, taking care of a neighbor's pet, or creating meal trains and rallying around a neighbor in need, we are constantly reminded of the power of good neighbors.

To nominate a good neighbor for recognition, please share a short story with us about what this person has done to make our community a better place to call home. Please ensure you include their name, your name and contact details and the reason for recognition in the email contents.

Email your nomination to: ranchreviewnewsletter@gmail.com.

Legends Ranch Prayer Warriors

Sometimes we just need a little extra help from the power of prayer. God is the right person for the journey. If you would like to request prayers for a special someone in their time of grief, ill-health or need please share your prayer requests to: ranchreviewnewsletter@gmail.com



Montgomery County MUD 89 Introduces Smart Meters MCMUD89

In the name of conservation and customer convenience, Montgomery County MUD 89 recently decided to install smart water meters. These meters have electronic sensors that measure water flow, which allows them to have more accuracy. With the use of a smart phone app, customers are able to keep a closer eye on their water consumption. The District will begin replacing the old mechanical meters with new digital ones. More information will be provide once the smart meters are being installed.

(Continued on Page 2)

IMPORTANT NUMBERS

Property Tax

Montgomery County Tax	936-539-7897
Conroe ISD	936-709-7751
Montgomery MUD #89	713-932-9011

Police & Fire

Emergency.....	911
Montgomery Sheriff	936-760-5800
Pct. 3 Constable Office	281-364-4211
S. Montgomery Co. Fire Dept. Non-Emergency.....	281-363-3473
Montgomery County EMS Non-Emergency	936-441-6243
Crime Stoppers.....	713-222-TIPS
Poison Control.....	800-222-1222
Texas DPS	713-681-1761

Utilities

Electricity (TXU).....	800-368-1398
Electricity (TXU New Service)	281-441-3928
Electricity (Centerpoint).....	713-207-2222
Gas (Centerpoint).....	713-659-2111
Water/Municipal Oper. & Consulting	281-367-5511
Best Trash	281-313-2378
Street Light Outages	713-207-2222
Cable/Internet/Phone...COMCAST.....	713-341-1000

Public Services

Local US Post Office.....	281-419-7948
Toll Road EZ Tag.....	281-875-3279
Voters Registration.....	936-539-7843
Vehicle Registration	281-292-3325
Drivers License Information	936-442-2810
Montgomery County Animal Control	936-442-7738
Montgomery Chamber	281-367-5777

Conroe ISD	936-709-7751
Birnam Woods Elementary	281-863-4200
Cox Intermediate	281-465-3200
York Junior High	832-592-8600
Oak Ridge High	832-592-5300

NEWSLETTER INFO

Editor

Submit Articles..... legendsranch@peelinc.com

Publisher

Peel, Inc. www.PEELinc.com, 888-687-6444
Advertising..... advertising@PEELinc.com, 888-687-6444

(Continued from Cover)



Why Install Smart Meters?

The Badger E-Series meters with the use of EyeOnWater allow for:

- Accurate meter recording
- Access to your account via the web or smart phone
- Consistent meter readings and more predictable billing
- A graphic presentation of

your hourly consumption that will allow you to track your highest usage periods. This enables you to make more educated decisions regarding your water consumption

- The system will provide potential Leak detection in your household

For latest updates and meeting schedule

Please go to <http://www.mcmud89.com>

Please note: The Board generally meets on the first Thursday of the month at the offices of:

Allen Boone Humphries Robinson LLP

3200 Southwest Freeway, Suite 2600

Houston, TX 77027

SINCE



1971

**AUTOMOTIVE • TRANSMISSION
TOWING • COLLISION**

"Complete Auto Service Facility"

281.367.3535

29707 W. HAWTHORNE AT RAYFORD RD.

HOURS: Monday - Friday 7am - 6 pm

Saturday - 7 am - Noon

**15% OFF
LABOR**

**SCHEDULE YOUR
APPOINTMENT ONLINE!**

www.MilsteadAutomotive.com

**SUPER HIGH
EFFICIENT
VARIABLE
SPEED SYSTEMS**



**UP TO \$2500 IN
REBATES PER SYSTEM
REPLACEMENT
AVAILABLE**

Valid for a limitedtime only and
subject to change without notice

www.AirofSpring.com

STAY SEASONABLY COMFORTABLE WITH AIR OF SPRING

**Air Conditioning • Heating • Refrigeration
Residential • Commercial**

**Servicing All Makes & Models • Senior Citizen/Military Discount Family Owned &
Operated • Annual Preventative Maintenance Contracts • 10 Year Parts & Labor
Warranty Available Real Estate Inspections**

**BOOK YOUR SERVICE ANYTIME! CALL OR GO ONLINE
281-350-9392 • www.airofspring.com**



Licensed Insured
& Bonded
Lic #TACLB014135E
Lic #TACLA78210C



\$54.95

**Complete A/C
Inspection
Additional Units
\$49.95 Each**

Valid on Residential Jobs Only. With
Coupon. Not Valid Sundays, Holidays,
after hours, With any other offer or
coupon. Expires 10/31/19

**\$20
OFF**

Diagnosis

Valid on Residential Jobs Only.
With Coupon. Not Valid Sundays,
Holidays, after hours, With any
other offer or coupon.
Expires 10/31/19

\$100 OFF

**Purchase & Installation
Of Any HVAC Equipment
or**

\$250 OFF

**Purchase & Installation
Of Any HVAC System**

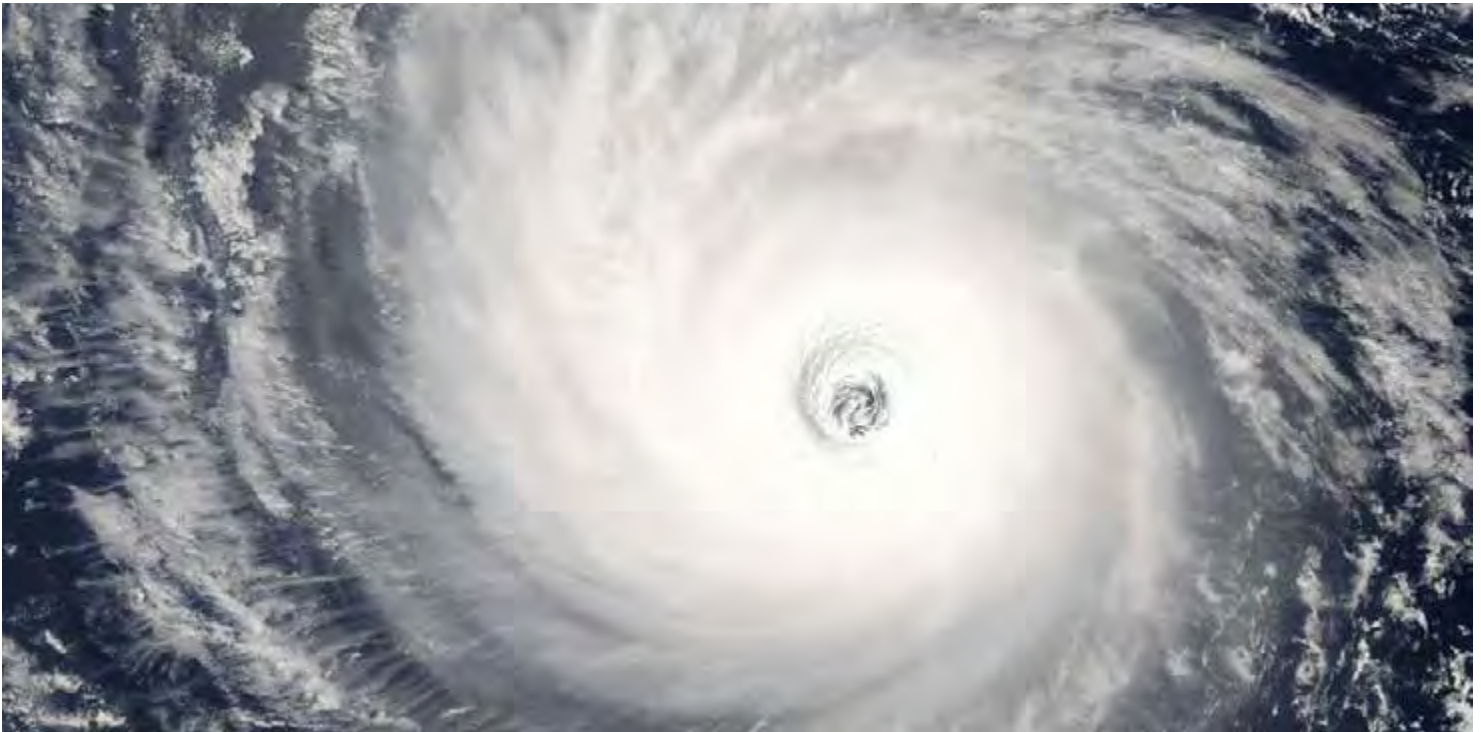
Valid on Residential Jobs Only. With
Coupon. Not Valid Sundays, Holidays,
after hours, With any other offer or
coupon. Expires 10/31/19

**\$65
OFF**

**Any Repair Over
\$300**

Valid on Residential Jobs Only. With
Coupon. Not Valid Sundays, Holidays,
after hours, With any other offer or
coupon. Expires 10/31/19

Hurricane Preparedness



Each year NOAA and the American Red Cross publishes a preparedness guide of tropical cyclones to help us prepare for such an emergency. You can download a copy of that guide at <http://www.nws.noaa.gov/os/hurricane/resources/TropicalCyclones11.pdf>. This guide gives great information on the metrological terms associated with tropical storms and what to expect from those storms. Most importantly, it lists critical information about how to prepare for an incoming storm.

Guidelines each year prior to hurricane season:

- Determine safe evacuation routes inland
- Learn locations of official shelters
- Check emergency equipment such as flashlights, generators and battery powered equipment such as cell phones and your NOAA Weather Radio All Hazards receiver.
- Buy food that will not spoil and store drinking water.
- Buy plywood or other material to protect your home if you don't have it.
- Trim trees and shrubbery so branches don't fly into your home.
- Clear clogged rain gutters and downspouts.
- Decide where to move your boat if applicable.
- Review your insurance policy.
- Find pet friendly hotels on your evacuation route.

During the storm and when Pearland is in the warning area, you should:

- Closely monitor radio, TV or NOAA Weather Radio All Hazards for official bulletins.
- Close storm shutters.

- Follow instructions issued by local officials. Leave immediately if ordered.

- Stay with friends or relatives at a low-rise inland hotel or at designated public shelter outside of the flood zone.

- DO NOT stay in a mobile home or manufactured home.

- Notify neighbors and a family member outside of the warned area of your evacuation plans.

- Take pets with you, but remember that most public shelters do not allow pets other than service pets for people with disabilities.

- Identify pet friendly hotels along your evacuation route.

If you are staying home to “hunker” out the storm:

- Turn refrigerator to maximum cold and keep it closed.

- Turn off utilities if told to do so by authorities.

- Turn off propane gas tanks.

- Unplug small appliances.

- Fill bathtub and large containers with water in case clean tap water is unavailable. Use water in bathtubs for cleaning and flushing only. Do NOT drink it.

- Stay away from windows and doors, even if they are covered. Take refuge in a small interior room, closet or hallway.

- Close all interior doors. Secure and brace exterior doors.

- If you are in a two-story house, go to an interior first floor room.

- If you are in a multi-story building and away from water, go to the first or second floor and stay in the hallways or other interior rooms away from windows.

- Lie on the floor under a table or other sturdy object.

Help Make the World a Better Place



Did you know that by opening your home to a foreign exchange student you are taking on the role as a diplomat of the United States? Its true! Hosting a teenager from another country is form of public diplomacy – it gives both the host family and the student an opportunity to learn from each other, exchange cultural experiences and most of all, form life-long relationships.

All that is required of a host family is to provide three meals a day, a place for the student to sleep and a little bit of TLC thrown in. Students can share a room with a same sex sibling that is within three years of their age. The students all come with their own spending money, health insurance and an eagerness to be part of your family.

STS Foundation, a 501(c)(3) organization, is looking for volunteer host families for the 2019/2020 school year. We accept all different types of families, from single parents, to newly marrieds, to empty nesters to same sex couples. The application process is simple, once you are completely vetted, you will have access to our student database where you can select the student that best fits in with your family.

If you would like to find out more about hosting one of our wonderful students, please contact Vicki Odom at (832) 455-7881 or email at vicki.stsfoundation@yahoo.com. I can get you started in helping to make the world a better place to live.

DID YOU SAY FREE?

**YES! YOUR NEWSLETTER IS
PROVIDED 100% FREE OF CHARGE**

and is made possible by the advertisers within. Please frequent their businesses and let them know where you saw their advertisement. While there, be sure to say "Thanks!"

www.PEELinc.com

PEEL, INC.
community newsletters



NOW ENROLLING

Gateway to Learning Child Care Center

 *Summer 2019* 

FULL TIME CHILDCARE
Ages 6 weeks to 4th grade

Computer Lab, Chapel, Splash Days, Water Slides,
Talent Show, Laser Tag, Theme Days,
Off Site Field Trips (K-4th grade), Lunch included



WORSHIP SERVICE: SUNDAYS AT 10:30AM & WEDNESDAYS AT 6:45PM

BIBLE STUDY CLASSES: SUNDAYS AT 9:15AM

2930 RAYFORD ROAD 281.363.4500 • www.DISCOVERGATEWAY.com

Not Available
Online



Garage Door Opener
Access security system with rolling code technology

1 remote

Model #850

\$390

Replacement Door
Includes installation, take down & removal

Raised panel non-insulated steel door

Color White or Almond

Model 170

\$790
16'x7'

\$470
8'x7'

Torsion Spring
Our everyday installed price.

Dont pay more!

\$195
1 torsion spring

\$295
2 torsion springs

(936) 756-0100
ohdconroe.com

Prices apply only for work scheduled between normal working hours 8-5 M-F; All Prices: Plus Tax.

Fall Webworms

Webworms can be found on a variety of trees and are most well-known for the webbing they create on the tips of branches. Webworms are caterpillars, or larvae, of a moth. Caterpillars cause damage by feeding on foliage that is inside the protective webbing.

There are 2-4 generations of webworms that occur each year. The first generation appears April- May and the last generation occurs in the late fall. The last generation is the most damaging generation, which provides these creatures with the name fall webworm.



Webworm larvae are about an inch long when fully grown. They are pale green to yellow with tufts of long hairs projecting from their body. Most people notice webbing that webworms create on the tips of branches. Webworms feed within the webbing and use it as protection from predators. When the caterpillars run out of foliage to feed on, they expand the web to encompass new leaves.

To manage webworms, the size and accessibility of the tree needs to be considered. Egg masses can be pruned from trees before they hatch in early spring. Egg masses are on the underside of leaves and are covered with hairs. Small webs can also be pruned from the tree when they begin to form in the spring. Larger webs can be knocked out of the tree or opened with a stick or jet of water which will allow predators inside the web to feed on caterpillars. Do NOT use fire to burn the web from trees! This causes more damage to the tree than if the caterpillars continued to feed.

Insecticides are also available for webworm management. Look for active ingredients such as *Bacillus thuringiensis* var. *kurstaki* (this product specifically targets caterpillars), spinosad, azadirachtin, or pyrethrins. Webs need to be opened before treatment with a pesticide so that pesticide gets inside the web where caterpillars are located.

Please note that webbing will remain in trees even after

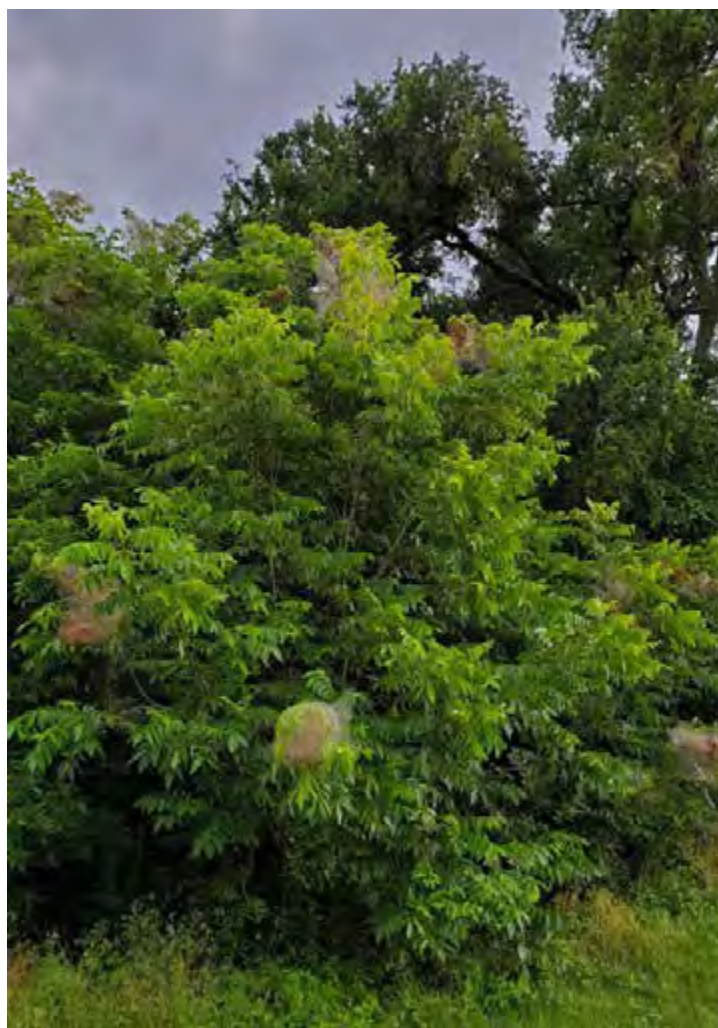
caterpillars are dead. Webbing needs to be removed by you or a strong weather event.

For more information or help with identification, contact Wizzie Brown, Texas AgriLife Extension Service Program Specialist at 512.854.9600. Check out my blog at www.urban-ipm.blogspot.com

This work is supported by Crops Protection and Pest Management Competitive Grants Program [grant no. 2017-70006-27188 /project accession no. 1013905] from the USDA National Institute of Food and Agriculture.

The information given herein is for educational purposes only. Reference to commercial products or trade names is made with the understanding that no discrimination is intended and no endorsement by Texas A&M AgriLife Extension Service or the Texas A&M AgriLife Research is implied.

The Texas A&M AgriLife Extension Service provides equal access in its programs, activities, education and employment, without regard to race, color, sex, religion, national origin, disability, age, genetic information, veteran status, sexual orientation or gender identity.





WIRED | **GENERATORS**
ELECTRICAL SERVICES | by **WIRED**

Residential & Commercial
Family Owned & Operated

Home Standby Generators

- ✓ Installation
- ✓ Maintenance
- ✓ Services & Repair

713-467-1125
generatorsbywired.com

\$20 OFF Your Next Service Call!
Not to be combined with any other discount or offer. Expires 8/1/2018

5 Year Warranty*
100% Customer Satisfaction Guaranteed!

GENERAC

VISA, MasterCard, American Express, Discover, BBB
Master #100394 TECL #22809

PATIO COVERS | PERGOLAS | CARPORTS | PORTE COCHÈRES
OUTDOOR KITCHENS | DECORATIVE OUTDOOR FLOORING



RAIN PROOF DESIGN

CUSTOM PATIO STRUCTURES
Committed to Quality, Value & Service

CPS 832.570.3990 www.custompatiostructures.com **BBB**

FAMILY OWNED & OPERATED WITH OVER 20 YEARS EXPERIENCE
FREE ESTIMATES & DESIGN CONSULTATION • 100% FINANCING AVAILABLE

RANCH REVIEW

The Ranch Review is a private publication published by Peel, Inc. It is not sanctioned by any homeowners association or organization, nor is it subject to the approval of any homeowners association or organization, nor is it intended, nor implied to replace any publication that may be published by or on behalf of any homeowners association or organization. At no time will any source be allowed to use the Ranch Review contents, or loan said contents, to others in anyway, shape or form, nor in any media, website, print, film, e-mail, electrostatic copy, fax, or etc. for the purpose of solicitation, commercial use, or any use for profit, political campaigns, or other self amplification, under penalty of law without written or expressed permission from Peel, Inc. The information in the newsletter is exclusively for the private use of Peel, Inc.

DISCLAIMER: Articles and ads in this newsletter express the opinions of their authors and do not necessarily reflect the opinions of Peel, Inc. or its employees. Peel, Inc. is not responsible for the accuracy of any facts stated in articles submitted by others. The publisher also assumes no responsibility for the advertising content with this publication. All warranties and representations made in the advertising content are solely that of the advertiser and any such claims regarding its content should be taken up with the advertiser.

* The publisher assumes no liability with regard to its advertisers for misprints or failure to place advertising in this publication except for the actual cost of such advertising.

* Although every effort is taken to avoid mistakes and/or misprints, the publisher assumes no responsibility for any errors of information or typographical mistakes, except as limited to the cost of advertising as stated above or in the case of misinformation, a printed retraction/correction.

* Under no circumstances shall the publisher be held liable for incidental or consequential damages, inconvenience, loss of business or services, or any other liabilities from failure to publish, or from failure to publish in a timely manner, except as limited to liabilities stated above.



**GO GREEN
GO PAPERLESS**

Sign up to get this newsletter in your inbox! Visit peelinc.com for details.



ADVERTISE
Your Business Here
Call 512.263.9181 for details.
www.peelinc.com



HAIL DAMAGE?

ACT NOW to Protect Your Home and Investment

- Hail Damage
- Wind Damage
- Missing Shingles
- Curling Shingles
- Visible Dents in Soft Metals/Vents
- Signs of Aging

  Locally owned & operated
Doing business in Houston for 55 years

832-797-4497
MullinsRoofing.com
mortonmullinsroofing@yahoo.com

Call today for a FREE inspection
Licensed • Insured • Summerwood Community Sponsors

Easy Root Beer Float Pie



Ingredients:

¾ cup of root beer

½ cup milk

2 T root beer concentrate

1 box (3oz) instant vanilla pudding mix

1 tub (8oz) Cool Whip, thawed

1 ready-to-use graham cracker crust

Additional whipped cream and maraschino cherries for garnish (optional)

Instructions:

In a large mixing bowl, combine the root beer, milk, and root beer concentrate.

Sprinkle the vanilla pudding mix over it and whisk together for 2 minutes.

Fold in the thawed cool whip and mix together until well combined.

Pour into the prepared crumb crust and spread evenly.

Cover and freeze for at least 8 hours.

Garnish if desired.

Can be enjoyed straight from the freezer or thawed slightly.

Recipe originally from Jeanette Terrazas's Rootbeer Float Pie

AFFORDABLE SHADE PATIO COVERS

*Creating Comfort for Outdoor Living...
with Affordable Shade.*



*We obtain City Permits,
TDI Windstorm Certification,
and help with HOA Approvals.*

Call to schedule a free estimate.

713-574-4648

Visit our website to view more designs.
AffordableShade.com

Custom Patio Covers

Cedar & Treated Pine Shade Arbors

Aluminum Patio Covers & Arbors

Palapas & Tiki Huts & Screen Rooms

Decorative & Structural Concrete



Financing Available* with Payments as Low as \$250

**Subject to Credit Approval*





PEEL, INC.

308 Meadowlark St. South
Lakeway, TX 78734

PRSR STD
U.S. POSTAGE
PAID
PEEL, INC.

LR

YOU'VE SET YOUR GOALS, **NOW REACH THEM.**

Expand your
target audience in
Legends Ranch
today.

Call 1.888.687.6444
or visit: www.peelinc.com



PEEL, INC.
community newsletters