

The Messenger

NEWS FOR THE RESIDENTS OF MEYERLAND

Selling
REAL ESTATE
during a
PANDEMIC

Read about "the new normal"
on Page 5

 **Bouquella Cleaners**

**On Site
Cleaning**
Every Garment
Hand Finished

OPEN

**FREE
PICKUP
DELIVERY**

**BUSINESS
SPOTLIGHT**

Read about Bouquella Cleaners on Page 5!

Honor your Grad!

See How on Page 3

We are *your* Meyerland specialists!

SOLD!



MEYERLAND | 5222 Carew Street
3 BEDROOMS | 2 BATHS | ±1,762 SQ. FT.
Last list price \$419,500



PENDING!



MEYERLAND | 5751 Birdwood
4 BEDROOMS | 2.5 BATHS | ±2,986 SQ. FT.
Offered at \$498,000 | MLS 7481874



REDUCED!



MEYERLAND | 4978 Valkeith Drive
4 BEDROOMS | 3 BATHS | ±2,750 SQ. FT.
Offered at \$698,500 | MLS 7168814



AVAILABLE!



MEYERLAND | 5718 Birdwood Road
4 BEDROOMS | 2.5 BATHS | ±2,420 SQ. FT.
Offered at \$450,000 | MLS 93288082



AVAILABLE!



MEYERLAND | 5618 Darnell
3 BEDROOMS | 2 BATHS | ±2,204 SQ. FT.
Offered at \$399,000 | MLS 53628330



AVAILABLE!



MEYERLAND | 5003 Yarwell Drive
±9,921 SQ. FT. LOT
Offered at \$299,000 | MLS 16697379



Contact us with all your real estate needs.



Terry Cominsky
REALTOR-ASSOCIATE®
713.558.3331
Terry.Cominsky@Sothebyshomes.com



Brena Moglovkin
REALTOR-ASSOCIATE®
832.264.6007
Brena.Moglovkin@Sothebyshomes.com

Martha
Turner
Sotheby's
INTERNATIONAL REALTY

You deserve a great Realtor® who knows
Meyerland!
We have over 50 years of combined experience.

If you are thinking of buying or selling a home in Meyerland, allow us to provide you with our Meyerland expertise, the strength of Martha Turner Sotheby's International Realty's worldwide network and a Relocation Department coordinating moves of buyers into Houston.

Important Numbers

SECURITY

Precinct 5 Constable
(including burglar
alarms)

281-463-6666

Emergency: 911

Houston Police Dept.
Non-Emergency
713-884-3131

CITY OF HOUSTON

Houston Help &
Information 311 or 713-
837-0311

District C Council
Member, Ellen Cohen:
832-393-3004

Godwin Park
Community Center
713-393-1840

CenterPoint Energy
Electric outages or
electric emergencies
713-207-2222
or 800-332-7143

Suspected natural gas leak
713-659-2111
or 888-876-5786

For missed garbage pickup,
water line break, dead
animals, traffic signals, and
other city services: 311

Some mobile phone users
may need to dial:
713-837-0311



The Messenger would like to honor 2020 graduates (high school, college, trade school, military). Please email us a photo, a brief description of your graduate, such as high school attended, activities or hobbies, where the student is headed after high school, and major if declared.

Emails can be sent to
themessenger@peelinc.com

Newsletter Information

Peel Inc is committed to making The Messenger a valuable tool for the residents of Meyerland. Please submit any community news, events and updates to
themessenger@peelinc.com

The Messenger - May 2020

Copyright © 2020 Peel, Inc.

PUBLISHER - Peel, Inc.

www.peelinc.com

Advertising

1-888-687-6444

advertising@peelinc.com



PRINT MEDIA
+
DIGITAL MEDIA
=

Success!

Your brand, managed.

512.263.9181

WWW.PEELINCMEDIA.COM

DO YOU
LEAVE
YOUR HOME TO GO
TO DRY CLEANERS
TWICE?



**LET US COME
TO YOU!**

WE OFFER:

2 Day Service | Personalized Reusable Laundry Bag
Reminder Text Before Your Pick Up Day
Alteration and Repair | Free Pickup & Delivery

**SIGN UP FOR
HOME DELIVERY**

19% OFF

ALL SERVICES

TILL 12/31/2020

\$19

**LAUNDRY
COMFORTERS**

Please Scan the Code
& fill out the form, so
we can add you to the
delivery schedule.



5130 Bissonnet St, Bellaire, TX 77401
Call 713-666-3450 or Text 832-987-4459
Near HEB Bellaire Market

BUSINESS SPOTLIGHT

Cover Story Continued



Bouquelle Cleaners has been in the same location since 1995. My mother-in-law was originally working there part-time in 1999, along with being a teacher full-time. Her American dream was to be an entrepreneur when she retired from teaching. She is now an owner, running the business with her husband since 2012.

In 2017, we were deeply affected by Hurricane Harvey's impact, and we lost a lot of our customers— especially the seventy-three home delivery customers we had in Meyerland alone.

We have been Meyerland residents since 1999, and now have taken another hit from COVID-19. Like many businesses are experiencing as well, it has been a struggle for us. We have worked with the great community of Meyerland to give back and support programs for schools and various charitable foundations.

We are still serving and doing business in Bellaire and Meyerland communities, and plan to always support our customers and neighbors however possible... then, now, and always.



Selling Real Estate During a *Pandemic*

We have a "New Normal" for practicing Real Estate during Covid-19. It certainly is a unique time in the real estate market. Although the business has slowed down in general due to the Stay at Home restrictions, Real Estate is considered an essential business. There are buyers and sellers that need to conduct Real Estate transactions. We are still taking new listings and guiding transactions to closing. Online interest has been strong.

Buyers are motivated with the drop in mortgage rates giving buyers a stronger incentive to purchase. Previously a buyer may have wanted to see many homes before making a decision while today's buyer has defined what they want and may only go see a few homes that best fit their needs.

We are trying to use virtual showing methods as often as possible to see homes through Virtual tours by Zoom, Face Time, Facebook , Instagram Live, Skype, etc.

If necessary, with the seller and buyer understanding the risks and with the seller's permission, we will do in person showings. The seller is asked to open all blinds, turn on lights, open closet doors, etc so visitors do not have to touch anything in the house. Sanitizer, gloves, masks and booties are recommended.

Our seller's and buyer's health is the most important factor to decide about in person showings. If a home is occupied, the seller needs to consider the risk as well as their desire to sell. Listing agents need to have a conversation with each seller about their wishes and discuss the buyer's urgency to purchase with the buyer's agent. This is not a time for "Shoppers" to be visiting homes. Also, we are not doing physical public open houses.

Another sign of the times is "Drive thru" closings! The parties to the transaction drive to a designated location and remain in their cars. The closer will hand them the documents they need to sign on a clipboard and explain the forms to them while remaining outside of the car!

It is very important in this unusual atmosphere for sellers and buyers to work with an experienced Realtor. We are here for you!

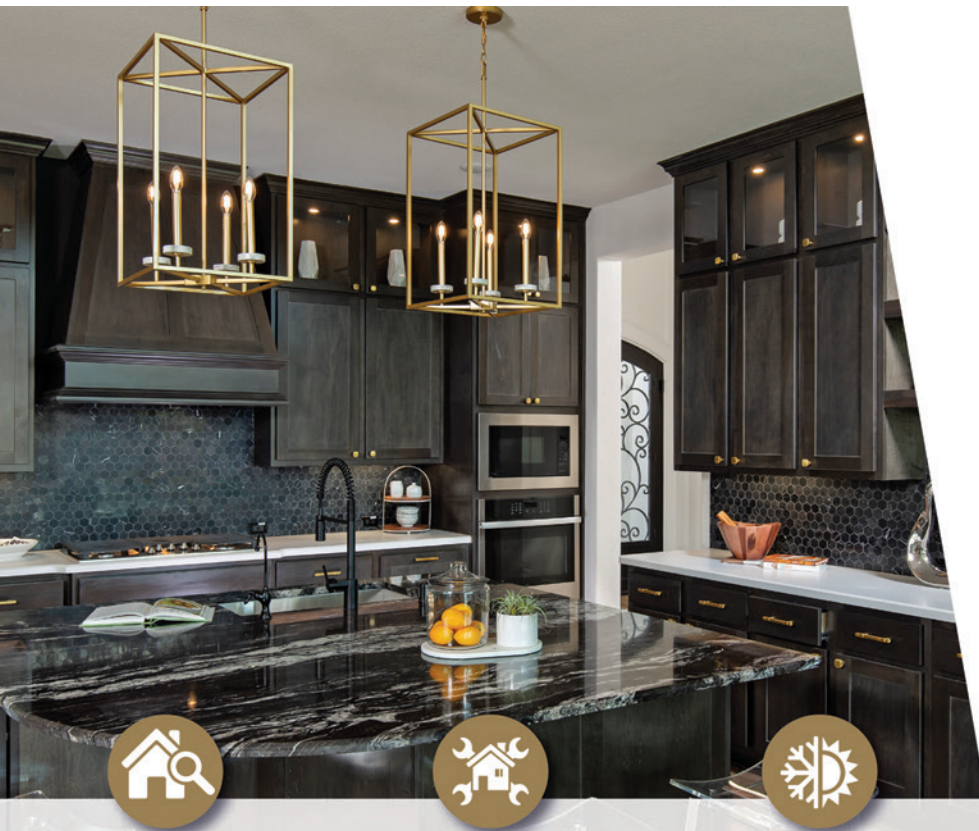
Terry Cominsky & Brena Moglovkin

MONTHLY TRASH & RECYCLING SCHEDULE



MAY 2020						
SUN	MON	TUES	WED	THURS	FRI	SAT
					1	2
3	4	5 TRASH	6	7	8	9
10	11	12 T/R	13 TREE	14	15	16
17	18	19 TRASH	20	21	22	23
24	25	26	27 T/R	28	29	30

JUNE 2020						
SUN	MON	TUES	WED	THURS	FRI	SAT
	1	2 TRASH	3	4	5	6
7	8	9 T/R	10 JUNK	11	12	13
14	15	16 TRASH	17	18	19	20
21	22	23 T/R	24	25	26	27
28	29	30 TRASH				



**COVENTRY
HOMES**

*Build On
Your Lot*

*Over 30 years
of Experience*



Free Homesite
Evaluation



10-Yr Structural Warranty
2-Yr Mechanical Warranty



Heating & Cooling
Cost Guarantee



BuildOnYourLot.CoventryHomes.com 713-804-8018



Jennie Kolter Elementary School and PTO Announce “The Grassroom” At Newly Constructed Post-Harvey Campus **Plans Created Pro-Bono**

by Houston Landscape Architecture Firm Clark Condon



(Houston, Texas, May 7, 2020) Jennie Katherine Kolter Elementary School and Kolter Parent/Teacher Organization (PTO) are happy to announce that the Houston landscape architecture firm, Clark Condon, has partnered with them pro-bono to create plans for “The Grassroom,” which will be a one-of-a-kind outdoor learning space for their newly constructed post-Harvey campus. Kolter has been a pillar of the Meyerland community since its opening in 1960. This HISD school has served the Southwest Houston community for over 60 years teaching Pre-K-5th graders as a Foreign Language Magnet School, offering classes in French, Spanish, and Chinese, in addition to traditional elementary school classes and ancillaries. When the beloved Kolter campus sustained more than 4 feet of water during Hurricane Harvey in 2017, the students and faculty lost more than a building, they lost a part of their history.

While the neighborhood is eagerly anticipating the reopening of their new school, it is with the understanding that the budget for the new campus did not allow to recreate Kolter’s former award-winning outdoor learning areas.

When it became clear that there was no way to salvage these spaces during construction, representatives from the Kolter PTO approached the Kolter administration to see if they could develop a new design for outdoor learning in the spirit of the previous garden. The Kolter Grassroom Committee was created and the dream of bringing it to life began.

Established in 2003, Kolter’s original vegetable garden, pond habitat, and coastal prairie environment, were a tremendous benefit to the students’ lesson enrichment. Each year, students at various grade levels were able to utilize these outdoor assets to step outside the traditional classroom, grow their own food in the vegetable garden, and discuss life-long healthy eating habits. The coastal prairie environment enabled children to explore how the land looked in their neighborhood before human development and the pond provided real world examples of life cycles, water cycles, and ecosystems.

Devoted Kolter parent and garden volunteer, Pilar Hernandez, took it upon herself to lead the charge. “I looked at the initial Kolter garden design and then let my imagination take over. What would my dream Kolter garden space look like? What could we do better? How could we create a even more useful and purposeful space?” Pilar continued, “I started with searching designs and literally cut and pasted them together. I had no idea if my ideas were feasible or not, but we had to start somewhere.”

Following Pilar’s presentation of possible garden layouts, the Kolter Grassroom Committee was formed, chaired by fellow Kolter parent Rysse Goldfarb. They connected with, Clark Condon, who graciously offered their design services pro-bono. Professional Licensed Architects Elizabeth Gilbert and Brendan Cloney have been instrumental in helping Kolter take their concepts and create comprehensive plans that will capture the imagination of students, staff, and community alike. “Clark Condon is excited to help Kolter give the students this important connection with nature.

Continued on Page 8

"...The Grassroom..." Continued from Page 7



This community's dedication to creating an interactive outdoor education space for the students is inspiring," said Elizabeth Gilbert. Clark Condon has also assisted with breaking the project up into various phases to help set fundraising goals.

" 'The Grassroom,' will incorporate ALL the spaces - not only the garden, but also the prairie, pond, and new orchard and butterfly garden as well as the outdoor covered classroom. 'The Grassroom' won't be built overnight, but it is certainly something to look forward to," added Kolter PTO President, Margaret Flippen.

It is their hope that after the new Kolter building has been completed by HISD in June of 2020, they can begin work on phase one of "The Grassroom." The initial phase of the project will include demolishing what remains of the original Kolter garden, laying the groundwork for the plumbing to support irrigation, creating amphitheater-shaped raised beds for the new vegetable garden, a fruit orchard, repairing and resurfacing the covered classroom under the existing pavilion, and creating accessible pathways. "I am thrilled that the Kolter PTO has taken on this project to bring back our outdoor learning opportunities for our students and future Kolter Cougars. I truly hope we are able to complete all phases of 'The Grassroom' and have our outdoor learning areas be as special as our new building promises to be," added Kolter Elementary school principal, Julie Dickinson.

Continued on Page 9

ONE-TIME CLOSE CONSTRUCTION, RENOVATION & ELEVATIONS LOANS

BENEFITS FOR HOMEOWNERS:

- Buy your lot now, build later – two time close
- Knock down current home and build – one time close
- Purchase new home and simultaneous build/renovate/elevate – one time close
- Fixed and adjustable rates available
- Loan to value based off future appraisal value
- 90% LTV to \$650,000, 85% LTV to \$1.5M
- Loan amounts up to \$3 million
- We use your builder's draw schedule
- Interest only payments during construction

Also available: Purchase, Refinance, Cash Out Refinance and Physician Loans



CRAIG LEVIN
Mortgage Loan Consultant
NMLS# 6066
678-469-9012
craig.levin@firstunitedbank.com
clevin.firstunitedteam.com
Meyerland Proud - Meyerland Resident
Follow Me on Facebook



BANKING • MORTGAGE

INSURANCE • INVESTMENTS

Member FDIC. Equal Housing Lender NMLS #400025.

Not FDIC Insured. No Bank Guarantee. May Lose Value.

"...The Grassroom..." Continued from Page 8


The orchard and butterfly gardens are new additions to the outdoor learning spaces. "During our three year stay at our temporary campus we call 'Kolter North' in Bellaire, we partnered with Houston Museum of Natural Science to create a robust butterfly garden. The students have really enjoyed learning about the lifecycles of the insects who visit this small garden and we couldn't bear the thought of leaving it behind. As a result, we wanted to be sure to incorporate a butterfly garden into 'The Grassroom.' In a way through the creation of a butterfly garden as part of 'The Grassroom,' we will be able to tie all three of Kolter's campuses back together," noted Pilar. "We decided to add an orchard because we have the space and what was missing before was well-chosen and carefully maintained fruit trees. They are familiar to the students and therefore effective in teaching them the connection between planting and eating."

Of course, turning these ambitious plans into reality will require dedicated fundraising campaigns. Immediately prior to the HISD school district closing down until further notice due to Covid-19, the school held a fun run to raise money for "The Grassroom" spaces. Children solicited sponsors and were encouraged to run 30-35 laps to earn funds. The school has also



received a donation from Westbury United Methodist Church's Harvey Fund, which has been designated to the development of "The Grassroom." They are extremely grateful for these efforts and are also actively pursuing grant options and seeking community partners willing to work with the school's PTO to raise the remaining funds needed to complete their vision. If you are interested in learning more about how to partner with Kolter on this project, please go to <https://kolterpto.com/the-grassroom/>.


For Interview Requests: Please Contact Rysse Goldfarb, thegrassroom@kolterpto.com



18 MONTHS –
KINDERGARTEN

גולדברג
GOLDBERG
MONTESSORI
SCHOOL

HONORING THE PATH OF THE CHILD



Enroll Now
2020-2021

gmshouston.org | 713.723.3856
4610 Bellaire Blvd., Bellaire TX 77401

WIRED GENERATORS
ELECTRICAL SERVICES *by WIRED*

Residential & Commercial
Family Owned & Operated

Generac Home Standby Generators
24/7 Automatic Power Protection

Sales • Installation • Maintenance • Repair & Parts

\$20 OFF

Your Next Service Call!

Not to be combined with any other discount or offer. Expires 6/1/20

Call us today for a FREE quote.

713-467-1125

generatorsbywired.com

GENERAC

SALES & SERVICE DEALER





Master #100394 TECL # 22809

The Messenger is a private publication published by Peel, Inc. It is not sanctioned by any homeowners association or organization, nor is it subject to the approval of any homeowners association or organization, nor is it intended, nor implied to replace any publication that may be published by or on behalf of any homeowners association or organization. At no time will any source be allowed to use The Messenger contents, or loan said contents, to others in anyway, shape or form, nor in any media, website, print, film, e-mail, electrostatic copy, fax, or etc. for the purpose of solicitation, commercial use, or any use for profit, political campaigns, or other self amplification, under penalty of law without written or expressed permission from Peel, Inc. The information in the newsletter is exclusively for the private use of Peel, Inc. The Messenger is an independent publication serving the Meyerland community. At no time will any source be allowed to use The Messenger's contents, or loan said contents, to others in any way, shape or form, nor in any media, website, print, film, e-mail, electrostatic copy, fax, or etc. for the purpose of solicitation, commercial use, or any use for profit, political campaigns, or other self amplification, under penalty of law without written or expressed permission from Peel, Inc. The information in the Messenger Newsletter is exclusively for the private use of Peel, Inc.

DISCLAIMER: Articles and ads in this newsletter express the opinions of their authors and do not necessarily reflect the opinions of Peel, Inc. or its employees. Peel, Inc. is not responsible for the accuracy of any facts stated in articles submitted by others. The publisher also assumes no responsibility for the advertising content with this publication. All warranties and representations made in the advertising content are solely that of the advertiser and any such claims regarding its content should be taken up with the advertiser.

* The publisher assumes no liability with regard to its advertisers for misprints or failure to place advertising in this publication except for the actual cost of such advertising.

* Although every effort is taken to avoid mistakes and/or misprints, the publisher assumes no responsibility for any errors of information or typographical mistakes, except as limited to the cost of advertising as stated above or in the case of misinformation, a printed retraction/correction.

* Under no circumstances shall the publisher be held liable for incidental or consequential damages, inconvenience, loss of business or services, or any other liabilities from failure to publish, or from failure to publish in a timely manner, except as limited to liabilities stated above.

LONE STAR LAWNS
 **Phone:** (832) 278-5712
Email: eligavia@gmail.com

RELIABLE, COMPETITIVE PRICES, FREE ESTIMATES
 FAMILY-OWNED AND INSURED
FIRST TIME CUSTOMERS MENTION THIS AD FOR \$5 OFF
 ONE BASIC LAWN SERVICE



CASTLE ROCK
 COMMUNITIES



MERCURY
 Luxury Homes by CASTLE ROCK

www.C-ROCK.COM

BUILD ON YOUR LOT
 Customize Your Dream Home




10,000 Homes
Since 2004

HALF OFF UPGRADES!!! (Up to \$30,000)

FREE Quote & Site Visit Within 48 Hours

For more information visit c-rock.com or contact us at (832) 582-0030 | NewHome@c-rock.com

Photographs are for illustrative purposes only. Prices, plans, elevations, availability and specifications are subject to change without notice. See Sales Consultant for details on available promotions and restrictions. Information believed to be accurate but not warranted. Promotions and discounts apply to new contracts only.



HOUSTON, WE CAN

CARE FOR OUR COMMUNITY, CONTROL THE SPREAD,
SAVE LIVES

Houston is strong. When confronted with adversity, we band together and overcome. And though this coronavirus pandemic is unprecedented, we face it the same way — together.

Houston Methodist would like to thank our employees, physicians, scientists and all health care workers who are committed to helping the community. Together we can make our city healthy and vibrant again.

HOUSTON
Methodist[®]
LEADING MEDICINE





PEEL, INC.

1405 Brandi Ln
Round Rock, TX 78681

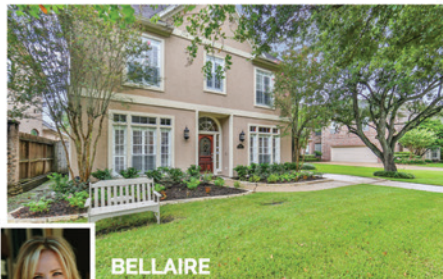
PRSR STD
U.S. POSTAGE
PAID
PEEL, INC.

MEY



BELLAIRE

5+/7.5 Custom Waterfall Pool, Outdoor Kitchen, Garage Apt. \$1,470,000



BELLAIRE

Cul-De-Sac Living. Gourmet Kitchen & Backyard Oasis with Pool \$995,000



MEYERLAND

6,000+ sq.ft. Living Space. Oversized Corner Lot, Courtyard & Pool! \$599,000



BECAUSE YOU ARE ESSENTIAL...
WE ARE ESSENTIAL.



MEYERLAND

5/2.5 with Modern Design & Pool/Deck \$639,000



MEYERLAND

Remodel this 2 Story Mid Century \$410,000



WEST UNIVERSITY

Open Concept 4/3.5 on Quiet Cul-De-Sac \$1,350,000



MED CENTER AREA

Recently Updated 4/2, Expansive Lot! \$435,000



MEYERLAND

Traditional 4/2 Updated! Spacious Yard \$365,000



MED CENTER AREA

First Floor Living, 3/2.5 Gated Community \$318,990

713-622-9339

WWW.BETHWOLFF.COM