

**Support Your Neighborhood Association and Join the HPWBANA
Inside: Monthly HPWBANA Constable Report**



HPWBANA

**HIGHLAND PARK WEST BALCONES AREA
NEIGHBORHOOD ASSOCIATION**

THE HPWBANA NEWS

VOLUME 17, NUMBER 02 • FEBRUARY 2021 • WWW.HPWBANA.ORG





Incomparable Mid-Century Modern Gem In Highland Park West

Designed by noted architect, Charles Granger of Fehr & Granger, and built in 1963. Meticulously renovated and returned to its Mid-Century Grandeur. This home offers a once-in-a-lifetime opportunity to step back into a kinder, gentler time.



4511 Balcones Drive

- ◇ 5 Bedrooms, 2 (including Owners' Suite) are on the main level, with 3 on the lower level
- ◇ Owners' Suite features wall of windows, fireplace, lounge area, kitchenette, dressing room, large marble bathroom and separate "nighttime" powder room
- ◇ 7 Full bathrooms and 2 powder rooms
- ◇ Privately gated 0.66 acre landscaped lot with lovely pool, outdoor entertainment areas and play area with outside access to bathroom
- ◇ Luxury features include floor-to-ceiling windows, media room, elevator, high ceilings, whole house generator, all new appliances, extensive storage space and much more
- ◇ Approximately 7,008 Square Feet
- ◇ Call or Text Broker for Price

Rebecca Wolfe Spratlin

Broker/MBA

Cell: 512-694-2191

Rebecca@RebeccaRealtyLLC.com

www.RebeccaRealtyLLC.com



IMPORTANT NUMBERS

Austin Citywide Information Center .. 974-2000 or 311

Emergency Police, Fire and EMS 911

Non-emergency Police (coyote sighting, etc.) 311

Social Services (during work hours) 211

APD REP. - Officer Darrell Grayson 512-974-5242

BOARD OF DIRECTORS

PRESIDENT

Pieter Sybesma..... president@hpwbana.org

VICE PRESIDENT

Jason Lindenschmidt.....vp@hpwbana.org

TREASURER

George Zwicker treasurer@hpwbana.org

SECRETARY

Dawn Lewis..... secretary@hpwbana.org

NEWSLETTER EDITOR

Pam Keller newsletter@hpwbana.org

WEBMASTER

Henry Tangwebmaster@hpwbana.org

BOARD MEMBERS

Bill McMillin board@hpwbana.org

Rebecca Spratlin..... board@hpwbana.org

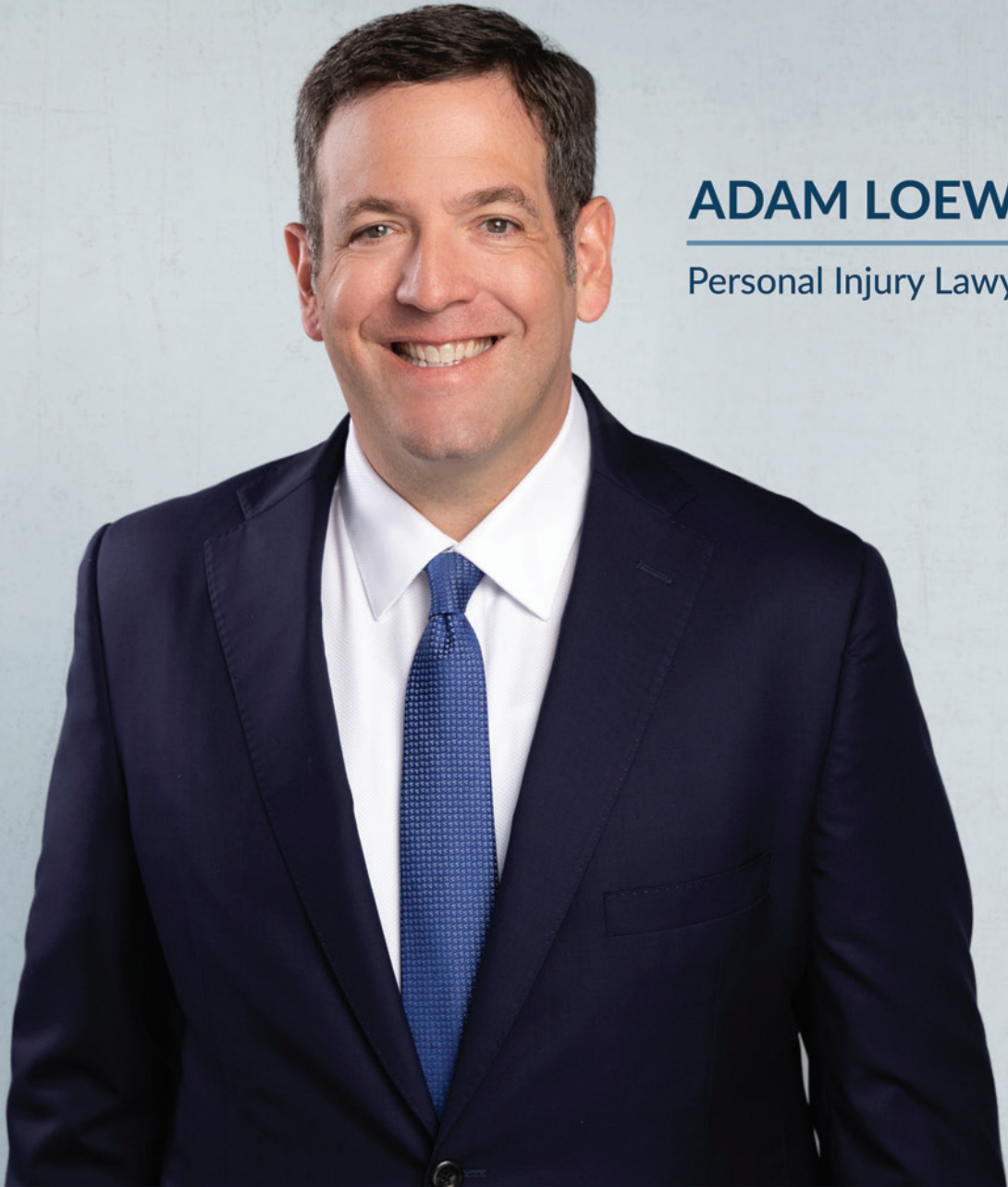
Bill Hyland board@hpwbana.org

The HPWBANA Board meets on the fourth Monday of each month except December. Please go to HPWBANA.org for our current meeting location or contact president@hpwbana.org.

HPWBANA is bordered on the north by 2222, on the south by 35th Street, on the west by Mt. Bonnell Road, and on the east by MoPac and by Bull Creek Road between Hancock Drive and 45th Street. Mail your membership dues to HPWBANA, P.O. Box 26101, Austin, Texas 78755.



Bicycle Accidents | Boating Accidents | Car Accidents | Dog Bites | Drunk Driving Accidents
Injuries to Children | Motorcycle Accidents | Slip and Falls | Truck Accidents | Wrongful Death



ADAM LOEWY

Personal Injury Lawyer



LOEWY LAW FIRM
HELPING INJURED TEXANS

LoewyFirm.com
(512) 280-0800



A team. A family.
An assist with
everything that matters.
That's the Power of WE.

Imagine life with a complete **support system**.
It's like an extended family working together and
making things easier. Meals, prescriptions, medical
appointments, **personalized care**, even a hobby
or two, all taken care of— with smiles at every turn.

Having it all, and **an extra hand**
when you need it. That's **Assisted Living** at
Maravilla @ The Domain senior living community.

Maravilla
@ THE DOMAIN

INDEPENDENT & ASSISTED LIVING,
MEMORY CARE AND REHABILITATIVE SERVICES

MaravillaAtTheDomain.com
11001 Austin Lane, Austin, TX 78758
512.387.8315

Located in The Domain at Austin Lane (formerly Newman Drive) & Kramer Lane

ASK ABOUT OUR
EXCEPTIONAL SAVINGS SPECIAL!

President's Letter

Neighbors:

There are many reasons for you to support our neighborhood association with your annual membership.

In the 1997 Articles of Incorporation for the Highland Park West Balcones Area Neighborhood Association, the Purposes of the Association state: "Specifically, the Corporation is organized to preserve and enhance the neighborhood in northwest Austin, Texas; to foster a closer, more genuine community of neighbors; to provide a forum for pursuing a variety of goals beneficial to the neighborhood; and, to improve the quality of life in the neighborhood in matters such as land use, zoning, environmental protection, public services, traffic, safety, consumer protection, and other matters of neighborhood concern."

Highland Park West Balcones Area Neighborhood Association, like many other neighborhood and civic associations, depends on volunteers, membership dues, and donations to pursue the goals of the association. Everyone can participate on some level—whether paying dues or volunteering your time. HPWBANA offers several opportunities to volunteer—from two hours at a time at a sponsored event or writing an article for the monthly newsletter to a few hours each month as a member of the HPWBANA Board or conducting Home Firewise Assessments.

We must have your support to continue neighborhood events, projects, and advocacy.

Membership funds are critical to the accomplishment of neighborhood projects, and your membership dues and donations will help us continue these efforts in 2021.

If you are already a member, please renew your membership for 2021.

If not, please join, and ask your neighbors to do the same.

You can contribute more than the standard membership amount (\$20 for Single-Member Household, \$25 for Family), as additional funds allow us to do more for the neighborhood.

You can join online at: www.hpwbana.org/get-involved/join.

Pieter Sybesma, President

Board of Directors

Highland Park West Balcones Neighborhood Association
president@hpwbana.org

Highland Park West Balcones Area



HIGHLAND PARK WEST BALCONES
AREA NEIGHBORHOOD ASSOCIATION

Now is the time to support the Highland Park West Balcones Area Neighborhood Association by renewing your membership for 2021! We need your support to continue neighborhood events, projects, and advocacy.

2021 FAMILY MEMBERSHIP FORM

<input type="checkbox"/> 2021 Family Membership (\$25) <input type="checkbox"/> 2021 Single Member Household Membership (\$20) Name: _____ Name of second adult: _____ Address: _____ Phone: _____ Email: _____	Additional Donation amount: \$_____ Applied to: ____ Neighborhood Preservation ____ Transportation & Safety (Constable Patrol) ____ Beautification ____ Events ____ Other (please list)
---	---

IT'S EASY! PICK YOUR WAY TO PAY.

1. **MAIL IT IN.** Send in the above Membership Form with a check made payable to:

HPWBANA
PO Box 26101
Austin, TX 78755

2. **VENMO!** How to find us? Search for: **HPWBANA Treasurer @HPWBANA**

Please include all the info from the form above in the "what's it for?" field.

Important! If you include an additional donation amount, please specify the **amount** and **where** you would like it applied to (categories in the membership form above).

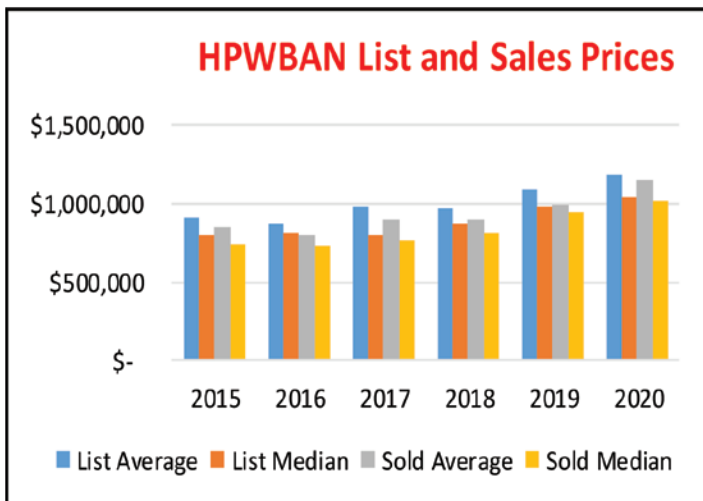
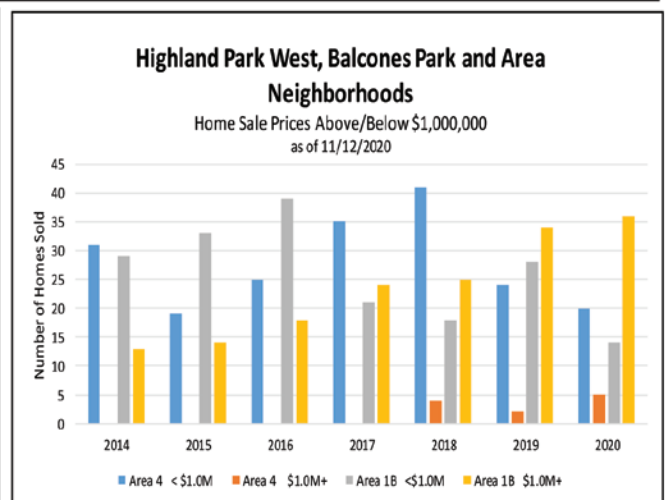
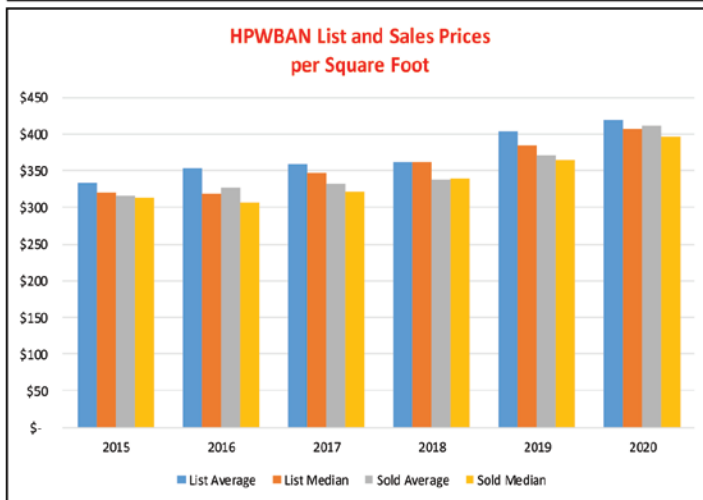
3. **Paypal.** Go to the following link: **www.hpwbana.org/join**

Thank you,

Board of Directors - Highland Park West Balcones Area Neighborhood Association (HPWBANA)

HIGHLAND PARK WEST and BALCONES PARK Area Neighborhoods Real Estate Statistics

Analyses and Graphs by Rebecca Wolfe Spratlin



Looking Back

I understand that most of us prefer NOT to look back on 2020. It was, no doubt, one of our nation's most challenging years. But it is important for all homeowners to understand how our neighborhood fared during these turbulent times.

When COVID-19 hit, HPWBAN saw a significant drop in the number of listings and sales...with NO sales at all in May. However, as we learned to work with PPE, social distancing and enhanced use of technology, the industry moved forward. As seen in the charts on the left, both the actual sales prices and the prices per square foot hit all time highs in 2020. As low inventories and pent-up demand continues, these prices are expected to hold strong and continue to increase. Buyers are eager to take advantage of the low interest rates (now approximately 2.16% for 15-year fixed and 2.65% for 30-year fixed conforming loans). The number of homes in HPWBAN that sold during 2020 represented 55% of sales compared to 18% 5 years ago. We continue to see our home investments appreciate.



All data was derived from Austin Board of Realtors® MLS. Data reflects listings and sales by member Realtors®. Note that off-market/private homes listed and sold by owners are not included in his data. © by Rebecca Wolfe Spratlin Broker/MBA at Rebecca Realty, LLC.



LETTUCE RECYCLE! *by Dena Houston*

MANY NEW QUESTIONS!

Over the last few months, I have received more recycling questions than usual. I will focus this edition of "Lettuce Recycle" on those questions. As a Recycling Block Leader and author of this column, I am committed to recycling education. Please continue to send your questions and recycling ideas to: recycling@hpwbana.org. Thank you!

• **CASH REGISTER RECEIPTS - CAN CASH REGISTER RECEIPTS GO INTO THE GREEN OR BLUE BIN?** No. Most of today's cash register receipts are printed on thermal paper. This paper is treated with BPA, making the paper neither recyclable nor compostable. Please place these receipts in the trash can.

• **ARE CARBONLESS PAPER RECEIPTS ALSO TREATED WITH BPA?** Yes, they are. These are the duplicate receipts and invoices often given by people who do work at your home. The typical carbonless paper contains a high concentration of BPA. These receipts have to go into the trash can.

• **FOIL TOPS - ARE THE FOIL TOPS ON YOGURT, SOUR CREAM AND CREAM CHEESE RECYCLABLE?** If the tops are aluminum foil, they are recyclable providing they are clean and dry. Please be sure to have at least a 2-inch ball of foil before placing it in your blue bin.

• **HARD PLASTIC HOLDERS - ARE THE HARD PLASTIC HOLDERS ON BEER CANS RECYCLABLE?** Yes, they are.

• **LABELS AND TAPE ON CARBOARD BOXES - DO I NEED TO REMOVE TAPE AND LABELS FROM CARBOARD BOXES BEFORE THEY ARE RECYCLED?** No, tape and labels do not need to be removed before cardboard boxes go into the blue recycling bin. However, boxes do need to

be emptied of all Styrofoam and other packing material.

• **PLASTIC RECYCLING SYMBOL - WHAT IF PLASTIC HAS NO RECYCLING SYMBOL?** If a plastic container or bottle has no recycling symbol, please throw it into your trash can. Without a recycling symbol, it is impossible for the recycling center to sort and recycle it.

• **RECYCLE & REUSE DROP-OFF CENTER - IS THE RECYCLE & REUSE DROP-OFF CENTER REALLY OPEN?** The center was open, by appointment only, until December 23, 2020. It closed at that time when Austin went to COVID Stage 5. Please check the following website for the most current information: <https://www.austintexas.gov/department/recycle-reuse-drop-center>

• **STYROFOAM - WHY CAN'T STYROFOAM BE PICKED UP CURBSIDE?** Styrofoam is very lightweight and takes up a lot of space. It can easily break into tiny pieces and scatter in the wind. Picking it up curbside would cause more litter pollution that is impossible to clean up. Please take your Styrofoam to the Recycle & Reuse Drop-Off Center. However, they do not take Styrofoam peanuts.

• **WHAT OTHER TYPES OF FOAM ARE RECYCLABLE?** Foam packaging, such as foam rolls, foam cushioning, foam packing sheets, and foam pouches, is also recyclable at the Recycle & Reuse Drop-Off Center.

Here is a very informative City of Austin recycling website that offers help in finding out how to recycle specific items: <http://www.austintexas.gov/what-do-i-do>.

**PLEASE REMEMBER, WHEN IN DOUBT
THROW IT OUT!**



Free Estimates on New A/C Systems
Fast 7-Day A/C Repairs
Energy Audits • Weatherization
Duct Repair & Replacement

Home & Handyman Repairs
Remodels & Additions
Senior Accessibility Upgrades
Painting / Staining
Drywall & Popcorn Removal
Decks & Fences / Install & Repairs

"We have been keeping Austin comfortable
for over 40 years." – The Yamin Family

TACL #B5235C



A-PLUS AIR CONDITIONING & HOME SOLUTIONS

Cooling • Heating • Home Repairs • Remodels
512.450.1980 • www.AplusAC.com

\$20 off
ANY A/C Repair or
Handyman Service!

Cannot be combined with other offers.
Check our website for additional coupons & discounts.



NATURE WATCH

EARLY SPRING HERALDS

by Jim and Lynne Weber

February is a time of change in Central Texas, with temperatures often ranging from the 30s to the 70s, and it is precisely these large swings in temperature that create challenges for local wildlife. Finding food is essential, and the little things like insects that emerge in early spring rely heavily on the early bloomers in our native landscape.

Elbowbush (*Forestiera pubescens*), also commonly called Stretchberry or Spring Herald, is a multi-branched deciduous shrub with smooth gray bark, long arched branches, and light green leaves. It is most conspicuous, though, in late January and early February, when small, yellow-green, petal-less flowers begin to burst in small clusters on the bare twigs. Common in open woodlands, brushy areas, and near streams, its early flowering period provides nectar for native bees and spring butterflies, namely Gray, Juniper, and Great Purple Hairstreaks. Elbowbush gets its common name from branches that typically form in right angles to one another, reminiscent of a bent elbow. It produces a quarter-inch, fleshy, dark blue fruit often devoured by wildlife in the summer, and its leaves turn a unique chartreuse color in the fall. Additionally, Elbowbush is one of the larval food plants for the Incense Cedar Sphinx (*Sphinx libocedrus*).



Elbowbush



Two-flowered Anemone

Poking their colorful blooms above the drab winter landscape are two species in the Buttercup Family, Two-flowered Anemone (*Anemone edwardsiana*) and Windflower (*Anemone berlandieri*). While both of these plants bloom from February to April, Two-flowered Anemone is an uncommon plant that is also called the Edwards Plateau Thimbleweed, since it grows only in this region of Central Texas. Windflower is common and has a more widespread range, and is often called Southern

Anemone or Tenpetal Anemone (even though it can have 10 to 20 petal-like sepals).

Two-flowered Anemone grows 6 to 12 inches tall, and is most often found on the moist banks of shaded canyons. Midway or further up the stem are three bracts, with side stems growing from those bracts, and each side stem can produce 1 to 3 flowers, with only 1 flower on the main stem. In reality, most plants carry only 2 or 3 flowers in total, each 0.5 to 1.25 inches wide and typically white, but can exhibit pink, lavender, light blue, or deep blue. In comparison, Windflower grows 6 to 15 inches tall, with low-lying leaves that are divided into three segments and are often reddish-purple on the underside. Its single stem carries only 1 flower, 0.75 to 1.5 inches wide, and it can exhibit the same range of colors as the Two-flowered Anemone.



Windflower

Found on the moist soils in shaded canyons in the southern half of the Hill Country, Golden Groundsel (*Packera obovate*) is a rosette-forming perennial that blooms from February to April. Slender flowering stems rise up to 18 inches above the basal rosette of oval leaves, topped with yellow flower clusters few to many-headed, with each flower 0.5 to 0.75 inches wide. Once established, this plant colonizes quickly, and can create an early-blooming, evergreen ground cover in shady, woodland areas.

Why not plant some of these early bloomers in your landscape, as they not only provide early nectar for bees and butterflies, but they are also welcoming heralds of our coming spring!

Send your nature-related questions to naturewatch@austin.rr.com and we'll do our best to answer them. If you enjoy reading these articles, check out our books, *Nature Watch Austin*, *Nature Watch Big Bend*, and *Native Host Plants for Texas Butterflies* (all published by Texas A&M University Press), and our blog at naturewatchaustin.blogspot.com.



Golden Groundsel

GARAGES

CLOSETS

EPOXY

AND MORE!



\$250 OFF

OR FREE ACCESSORIES

**MUST PRESENT THIS
AD AT THE TIME OR
ESTIMATE. LIMITED
TIME OFFER.**



We are now offering

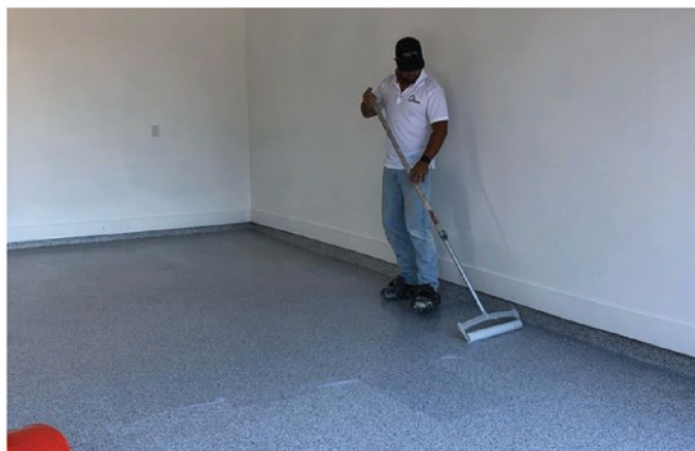
FREE VIRTUAL CONSULTATIONS!

GIVE US A CALL TO GET YOUR PROJECT STARTED!

512-791-7453

VISIT US ONLINE

www.fortitudehomesolutions.com



Let's Connect!

Highland Park West Balcones Area

STEVE'S PLUMBING REPAIR

Master License: M-39722

- Water Pressure Problems
- Sewer & Drain Service
- Fiber Optic Drain Line Inspections
- Free Estimates
- Satisfaction Guaranteed

Steve Brougner
512.276.7476



2605 Buell Ave



At no time will any source be allowed to use the HPWBANA Newsletter contents, or loan said contents, to others in any way, shape or form, nor in any media, website, print, film, e-mail, electrostatic copy, fax, or etc. for the purpose of solicitation, commercial use, or any use for profit, political campaigns, or other self amplification, under penalty of law without written or expressed permission from the HPWBANA and Peel, Inc. The information in the HPWBANA Newsletter is exclusively for the private use of HPWBANA Neighborhood residents only.

DISCLAIMER: Articles and ads in this newsletter express the opinions of their authors and do not necessarily reflect the opinions of Peel, Inc. or its employees. Peel, Inc. is not responsible for the accuracy of any facts stated in articles submitted by others. The publisher also assumes no responsibility for the advertising content with this publication. All warranties and representations made in the advertising content are solely that of the advertiser and any such claims regarding its content should be taken up with the advertiser.

* The publisher assumes no liability with regard to its advertisers for misprints or failure to place advertising in this publication except for the actual cost of such advertising.

* Although every effort is taken to avoid mistakes and/or misprints, the publisher assumes no responsibility for any errors of information or typographical mistakes, except as limited to the cost of advertising as stated above or in the case of misinformation, a printed retraction/correction.

* Under no circumstances shall the publisher be held liable for incidental or consequential damages, inconvenience, loss of business or services, or any other liabilities from failure to publish, or from failure to publish in a timely manner, except as limited to liabilities stated above.



**Keep Our
Neighborhood
Beautiful!**

**PLEASE PICK UP
AFTER YOUR PETS.**



February is American Heart Month

Did you know....

People with periodontal disease have an increased risk of heart disease

As we focus on our health, make a commitment to your dental health

- ♥ Same Day Crowns
- ♥ Cleanings & X-Rays
- ♥ Orthodontic Services
- ♥ Implants & Cosmetic Dentistry
- ♥ Pain Free Laser Dentistry
- ♥ Digital Impressions

Make a commitment to your health
Book your Appointment Today!



SHOAL CREEK DENTAL CARE
8015 Shoal Creek Blvd., Suite 120
512.453.8181
www.shoalcreekdental.com





IN PARTNERSHIP
WITH



TRANE®

It's Hard To Stop A Trane.®

*NOW IS THE BEST TIME TO UPGRADE
OR REPLACE YOUR AC*



512.339.7700
www.ArrowSvcCenter.com





PEEL, INC.

1405 Brandi Ln
Round Rock, TX 78681

PRSR STD
U.S. POSTAGE
PAID
PEEL, INC.

HP

NEW YEAR
NEW HOME



If your plans for **2021**
include buying or selling a home, please
contact me. I'd love to put my experience
and the resources of Moreland Properties
to work for you.

TREY MCWHORTER

Broker Associate

512-808-7129 cell | 512-480-0848 x116 ofc
treymcwhorter@moreland.com



CHRISTIE'S
INTERNATIONAL REAL ESTATE



LUXURY
PORTFOLIO
INTERNATIONAL

Leading

REAL ESTATE
COMPANIES
IN THE WORLD