



The Jester Warbler

Official Publication of Jester Homeowners Association, Inc.

February 2021

Volume 16, Issue 02

President's Corner

Greetings Jester Residents!

Happy February... I trust all are staying safe and well as we continue to navigate the strangeness that is the pandemic. First and foremost, please look out for each other, and let us know if there is anyone in need that we can help. Now, more than ever, we need to support each other!

Due to the pandemic and the changing landscape of safety precautions, our usual annual meeting has changed to a virtual plan of action. Notifications will be going out via email and mail with information, so please be on the lookout for that. If you do not have a current email registered with our management company (Goodwin & Company) please contact them as soon as possible. Aaron is our current point of contact: aaron.weinkrantz@goodwintx.com. He has the timeline set up leading up to the annual meeting and will be sending out the notices.

Timeline:

February 3 – meeting announcement, soliciting nominations for board positions (2 are open), explanation of voting process sent

March 3 – information for voting will be sent

March 5 – voting begins

March 25 – voting ends

March 29 – virtual meeting and voting results announced

We are always seeking to engage the Jester community in the HOA, so please step up and join us!! As mentioned, two board positions are open so take this opportunity to support your Jester neighborhood. We look forward to seeing you all at the virtual meeting in March. Until then, please take part in the virtual process and let us know if you have any input or questions. Stay safe and be well –

Christi Campbell

Jester HOA Board President



Two-flowered Anemone

Nature Watch

February is a time of change in Central Texas, with temperatures often ranging from the 30s to the 70s, and it is precisely these large swings in temperature that create challenges for local wildlife. Finding food is essential, and the little things like insects that emerge in early spring rely heavily on the early bloomers in our native landscape.

Continued on Page 5

Jester Welcome Committee has a NEW Member

By Carol Philipson



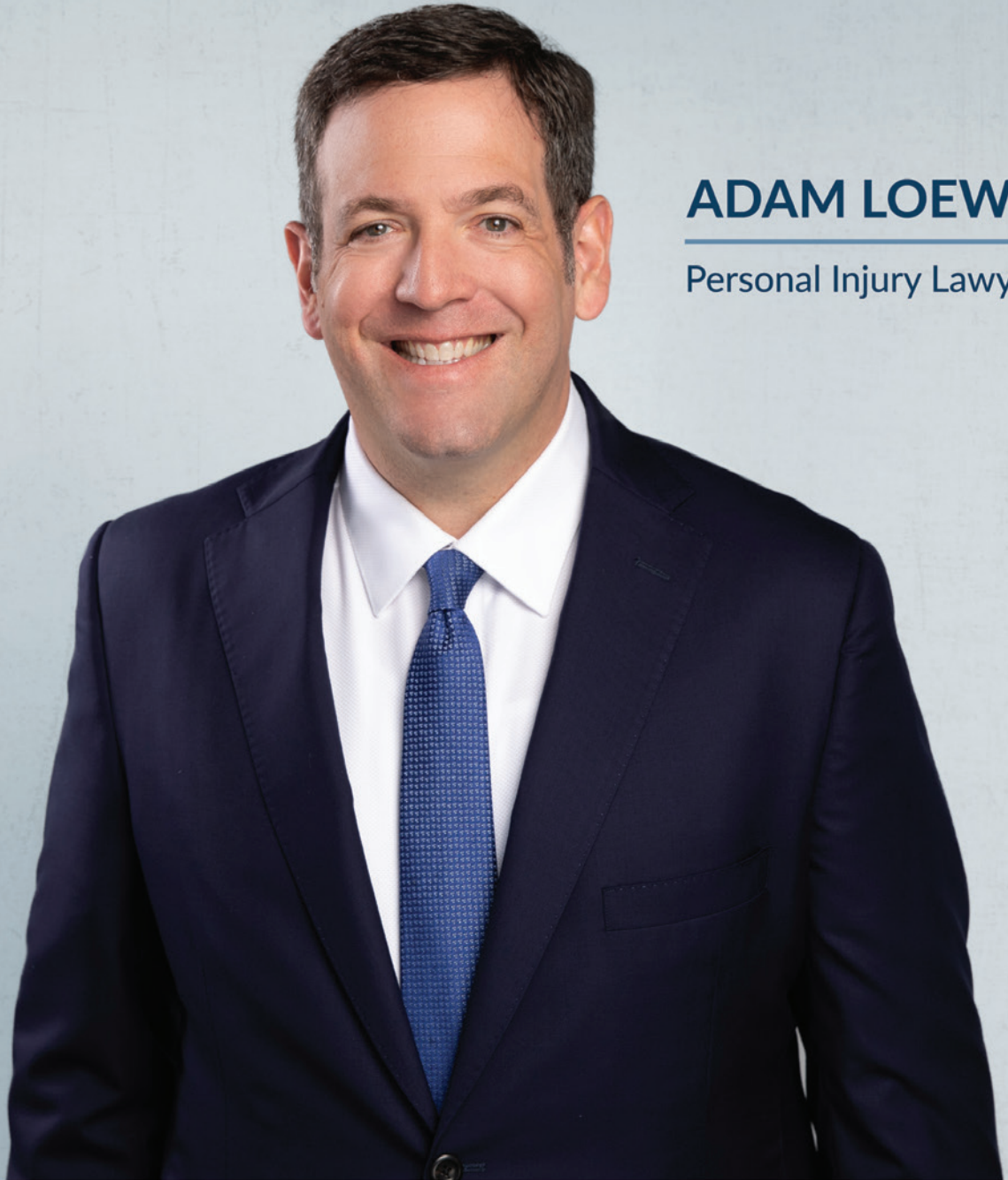
Kelly Smentek— New Jester Welcome Committee Member

Jester Welcome Committee is lucky to have a new member join the group. Kelly Smentek, a Jester resident since 2013, enjoys meeting new people and connecting with new Jester neighbors. The perfect way to do both was to join the committee.

The Jester Welcome Committee is always looking for a few outgoing, friendly residents to make newcomers "feel the love" Jester has to give! There is very little time involved, but join us only if you can be available. Hope you will join us... MEET A NEW NEIGHBOR... MAKE A NEW FRIEND!!

All meetings are safe and outside only, with social distancing protocols in place and masks worn at all times. If you have any questions and/or want to join our fun group (guys included), please private message us on NextDoor or through www.jesterhoa.com.

Bicycle Accidents | Boating Accidents | Car Accidents | Dog Bites | Drunk Driving Accidents
Injuries to Children | Motorcycle Accidents | Slip and Falls | Truck Accidents | Wrongful Death



ADAM LOEWY

Personal Injury Lawyer



LOEWY LAW FIRM
HELPING INJURED TEXANS

LoewyFirm.com
(512) 280-0800

Board of Directors

www.JesterHOA.com

President

Christi Campbell..... christi@jesterhoa.com

Secretary

Eva Wisser..... eva@jesterhoa.com

Landscape Committee Chair

Christi Campbell..... christi@jesterhoa.com

Social Committee Chair

Teresa Gouldie teresa@jesterhoa.com

Safety Committee Chair

Susanne Paul susanne@jesterhoa.com

Phil Ponebshek..... phil@jesterhoa.com

Peggy Hutchison peggy@jesterhoa.com

Suzanne Brown suzanne@jesterhoa.com

Architectural Control Committee Chair

Ron Herzfeld..... ron@jesterhoa.com

Restrictions Violations Committee Chair

Aaron Weinkrantz aaron.weinkrantz@goodwintx.com

Jester Club 512-794-8867

..... jesterclubmanager@yahoo.com, www.jesterclub.org

Homeowner's Association Mgmt - Goodwin Mgmt

Aaron Weinkrantz 512-852-7962

..... aaron.weinkrantz@goodwintx.com

Office:	Mailing Address:
11149 Research Blvd, Suite 100	P.O. Box 203310
Austin, TX 78759	Austin, TX 78720-3310

Newsletter Information

Editor

Hope Teel hopeteel@gmail.com

Publisher

Peel, Inc. www.PEELinc.com, 512-263-9181

Advertising..... advertising@PEELinc.com, 512-263-9181

ARTICLE SUBMISSIONS

Interested in submitting an article? You can do so by emailing hopeteel@gmail.com or by going to: www.peelinc.com/articleSubmit.php.

All news must be received by the 12th of the month prior to the issue.

NOT AVAILABLE ONLINE

STEVE'S PLUMBING REPAIR

Master License: M-39722

- Water Pressure Problems
- Sewer & Drain Service
- Fiber Optic Drain Line Inspections
- Free Estimates
- Satisfaction Guaranteed

Steve Brouher
512.276.7476

2605 Buell Ave



JESTERHOA.COM



Visit www.jesterhoa.com
for HOA documents and
info on the neighborhood!

Continued from Cover

NATURE WATCH

EARLY SPRING HERALDS

by Jim and Lynne Weber



Elbowbush

Elbowbush (*Forestiera pubescens*), also commonly called Stretchberry or Spring Herald, is a multi-branched deciduous shrub with smooth gray bark, long arched branches, and light green leaves. It is most conspicuous, though, in late January and early February, when small, yellow-green, petal-less flowers begin to burst in small clusters on the bare twigs. Common in open woodlands, brushy areas, and near streams, its early flowering period provides nectar for native bees and spring butterflies, namely Gray, Juniper, and Great Purple Hairstreaks. Elbowbush gets its common name from branches that typically form in right angles to one another, reminiscent of a bent elbow. It produces a quarter-inch, fleshy, dark blue fruit often devoured by wildlife in the summer, and its leaves turn a unique chartreuse color in the fall. Additionally, Elbowbush is one of the larval food plants for the Incense Cedar Sphinx (*Sphinx libocedrus*).

Poking their colorful blooms above the drab winter landscape are two species in the Buttercup Family, Two-flowered Anemone (*Anemone edwardsiana*) and Windflower (*Anemone berlandieri*). While both of these plants bloom from February to April, Two-flowered Anemone is an uncommon plant that is also called the Edwards Plateau Thimbleweed, since it grows only in this region of Central Texas. Windflower is common and has a more widespread range, and is often called Southern Anemone or Tenpetal Anemone (even though it can have 10 to 20 petal-like sepals).

Two-flowered Anemone grows 6 to 12 inches tall, and is most often found on the moist banks of shaded canyons. Midway or further up the stem are three bracts, with side stems growing from those bracts, and each side stem can produce 1 to 3 flowers, with only 1 flower on the main stem. In reality, most plants carry only 2 or 3 flowers in total, each 0.5 to 1.25 inches wide and typically white, but can exhibit pink, lavender, light blue, or deep blue. In comparison, Windflower grows 6 to 15 inches tall, with low-

lying leaves that are divided into three segments and are often reddish-purple on the underside. Its single stem carries only 1 flower, 0.75 to 1.5 inches wide, and it can exhibit the same range of colors as the Two-flowered Anemone.

Found on the moist soils in shaded canyons in the southern half of the Hill Country, Golden Groundsel (*Packera obovate*) is a rosette-forming perennial that blooms from February to April. Slender flowering stems rise up to 18 inches above the basal rosette of oval leaves, topped with yellow flower clusters few to many-headed, with each flower 0.5 to 0.75 inches wide. Once established, this plant colonizes quickly, and can create an early-blooming, evergreen ground cover in shady, woodland areas.

Why not plant some these early bloomers in your landscape, as they not only provide early nectar for bees and butterflies, but they are also welcoming heralds of our coming spring!

Send your nature-related questions to naturewatch@austin.rr.com and we'll do our best to answer them. If you enjoy reading these articles, check out our books, *Nature Watch Austin*, *Nature Watch Big Bend*, and *Native Host Plants for Texas Butterflies* (all published by Texas A&M University Press), and our blog at naturewatchaustin.blogspot.com.



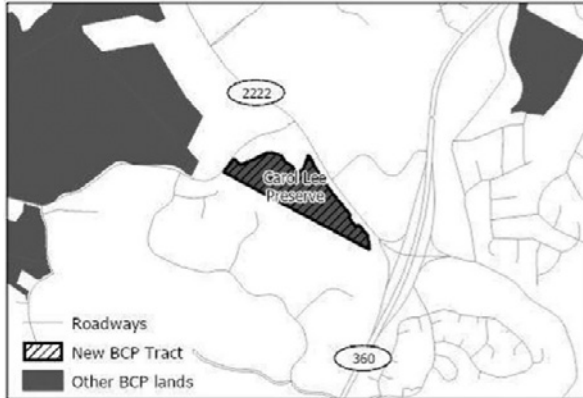
Windflower



Golden Groundsel

Carol Lee Preserve Announcement

Shared by Dale Bulla



Carol Lee Preserve Location

Exciting news! The owners of the Solera Reserve (formerly known as Champion Tract 3) officially transferred 34 acres of their property to the City of Austin's Balcones Canyonlands Preserve program.

This land, now called the Carol Lee Preserve, is one of the smallest tracts in the City of Austin's vast 13,600+ acre BCP land portfolio, and is a known habitat for endangered species, including the golden-cheeked warbler. (Note: The senior living facility is being built on the remaining 11 acres, which is still privately owned by the Solera Reserve partners.)

More details about a future dedication will be coming soon, but Shepherd Mountain and surrounding neighborhoods owe a debt a gratitude to quite a few folks who spent the last couple of years working on this, including:

- the late community activist Carol Lee, after whom the preserve will be named. Before Carol sadly passed away in September of 2018, she made a final wish that this land be turned into a BCP preserve and started the groundwork.
- future neighbor, Camelback owner, and Solera Reserve co-owner Jonathan Coon, who worked tirelessly to fulfill Carol's final wish
- the Solera Reserve ownership team, who have kept lines of communication wide open during this entire process, particularly with the Lake Austin Collective
- City Council Member Alison Alter and her dedicated staff, who coordinated closely with the Lake Austin Collective board and various Shepherd Mountain neighbors throughout this process
- the entire Austin Water BCP staff, particularly Geoscientist and Program Manager Nico Hauwert, who has spent a lot of time educating neighbors / environmental stewards Stu Robertson, Ali Baucom and me about BCP land management and the wonderful learning opportunities they can provide to all of us and our children in the years to come
- and of course, numerous neighbors like so many of you getting this email: neighbors who a few years ago took time out of busy schedules to attend City Hall meetings and to email or call city council members to ask that this land be responsibly developed with respect for its irreplaceable and unique natural resources.

For more information, visit <https://www.hillcountrydevelopment.org/carolleepreserve>.

MONTHLY MOVIE REVIEW

By Nicholas Pantaleoni

Scott Pilgrim vs. the World: Directed by Edgar Wright

Starring Michael Cera and Mary Elizabeth Winstead, *Scott Pilgrim vs. the World* is a must-see film. The movie keeps you thinking, "Edgar Wright, what was your thought process going into this?!" *Scott Pilgrim v.s the World* is the perfect crossover between comic and real world. With its stunning visuals, relatable main character and absolutely out-of-this-world story, filled with twists and completely random moments I would've never seen coming, it was an experience to just watch it unfold. I mean vegan superpowers? With a government that enforces it? Who thinks of that? Above all, Edgar Wright flawlessly keeps the audience wondering what will happen next with his unique transitions and visual symbols. This is definitely a movie you'll want to re-watch over and over again until Edgar comes out with his next masterpiece.

Wildlife Habitats



7615 Jester Blvd



7107 Foxtree Cv

February Sudoku Fun for Everyone!

	2	9				3	6	
8								9
	1						2	
7								6
6								5
	3						5	
2								1
	4	5				2	7	

	7	4				6	1	
6	9	5	8		2	7	4	3
3	1		7	6	4		8	9
7	3			4			2	5
5	6						3	4
	4	9				8	7	
		7	4		6	3		
			1	7	9			
				5				

LEMONY CHICKEN AND ORZO SOUP

BY MARY-FRANCES HECK



PREP TIME 15 MINUTES

TOTAL TIME 45 MINUTES

This weeknight chicken soup goes Greek with orzo, lemon juice, and a handful of fresh dill.

Ingredients

4 SERVINGS

- 1 tablespoon olive oil
- 1 medium leek, white and pale-green parts only, halved lengthwise, sliced crosswise 1/2-inch thick
- 1 celery stalk, sliced crosswise 1/2-inch thick
- 12 ounces skinless, boneless chicken thighs
- 6 cups low-sodium chicken broth Kosher salt, freshly ground pepper
- 1/2 cup orzo
- 1/4 cup chopped fresh dill
- Lemon halves (for serving)

Preparation

Step 1

Heat oil in a large heavy pot over medium heat. Add leek and celery and cook, stirring often, until vegetables are soft, 5-8 minutes. Add chicken and broth; season with salt and pepper. Bring to a boil, cover, reduce heat, and simmer until chicken is cooked through, 15-20 minutes. Transfer chicken to a plate. Let cool, then shred chicken into bite-size pieces.

Step 2

Meanwhile, return broth to a boil. Add orzo and cook until al dente, 8-10 minutes.

Step 3

Remove pot from heat. Stir in chicken and dill. Serve with lemon halves for squeezing over.

Treat yourself
to your best smile!



erin arnold
ORTHODONTICS
FAR WEST BLVD.

Initial consults are complimentary. We'd ♥ to help you and your children!
512.485.4410 eabraces.com



Dr. Erin Arnold
Jester mom





IN PARTNERSHIP
WITH



TRANE®

It's Hard To Stop A Trane.®

*NOW IS THE BEST TIME TO UPGRADE
OR REPLACE YOUR AC*



512.339.7700
www.ArrowSvcCenter.com



GREEN TIPS

By Dale Bulla

It is that time of the year for us to update our Jester Green Neighborhood data. Each January we add figures to the number of Certified NWF Habitats, solar panels, fully electric, plug-in and hybrid vehicles, rain water collection tanks or barrels, etc. If you have had your yard certified in the last year, or if you have purchased and installed solar panels, taken delivery of a partial zero emission vehicle, zero emission vehicle, hybrid or plug-in hybrid vehicle, please call me or send me an email so I can add this info. NO personal information will appear, only the numbers. Our numbers seem to get better and better each year as we continue to green our Green Neighborhood. It is great to live in such an environmental community with wonderful caring neighbors!

GO GREEN

VIEW THIS AND MANY MORE NEWSLETTERS ONLINE:

www.peelinc.com
Hover over "Newsletters" Tab
Click "Communities"



WOW! 2020 WAS A VERY GOOD YEAR FOR SOMETHING - JESTER FIREWISE EVALUATIONS

By Carol Philipson

Well, it looks like 2020 was good for something. Jester homeowners, 33 total, took the initiative to have their FireWise Home Evaluations in order to learn what can help make their homes more resilient if a wildfire should ignite. Compared to 2019, when only nine evaluations were conducted, this is exciting! It is very important to continue this upwards trend.

Jester Estates became a FireWise Community in 2013. Since then, a total of 197 evaluations have been conducted. (2013 -51; 2014 -52; 2015 -16; 2016 -0; 2017 -4; 2018 -32; 2019 -9; 2020 -33)

Considering Jester Estates consists of 900 homes, this is just a tiny fraction of homes in our community.

Wildfires can affect any home, not just those backing the greenbelt. Embers can travel over a mile and can very easily ignite spot fires throughout our neighborhood. Knowledge is power, and with a FireWise Evaluation, you'll gain the power to protect your home by learning how to make it more fire ready. The FireWise Committee makes only recommendations, it's up to you to follow through.

So don't hesitate, make 2021 a banner year for Jester with more FireWise Evaluations than ever. To schedule an evaluation, send me a message via NextDoor or through www.jesterhoa.com.



Example of Fire Devastation



FIREWISE USA®
RESIDENTS REDUCING WILDFIRE RISKS

GARAGES

CLOSETS

EPOXY

AND MORE!



\$250 OFF

OR FREE ACCESSORIES

**MUST PRESENT THIS
AD AT THE TIME OR
ESTIMATE. LIMITED
TIME OFFER.**



We are now offering

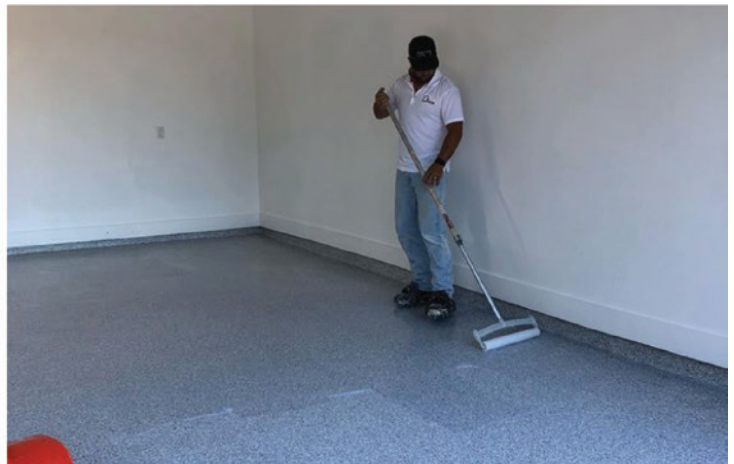
FREE VIRTUAL CONSULTATIONS!

GIVE US A CALL TO GET YOUR PROJECT STARTED!

512-791-7453

VISIT US ONLINE

www.fortitudehomesolutions.com



Let's Connect!



PEEL, INC.

1405 Brandi Ln
Round Rock, TX 78681

PRSRT STD
U.S. POSTAGE
PAID
PEEL, INC.

JE



Teresa Gouldie

Jester Resident / Broker

512-751-8000

tgouldie@gmail.com



**COLDWELL BANKER
REALTY**

Proven

Results!



INVENTORY IS **LOW!**
BUYER INTEREST IS **HIGH!**



DEMAND DRIVES PRICING!

And OUR Neighborhood, Jester, is in Demand!

It's a Great Time to Sell!

Timing is critical in getting top dollar. If you are considering selling your home, please contact me to discuss how we can maximize your position in today's market!

Teresa

serving JESTER ... Just a Little Closer to Heaven!