

The Gazette

FEBRUARY 2021
VOLUME 14 ISSUE 02



LETTUCE RECYCLE!

by Dena Houston

MANY NEW QUESTIONS!

Over the last few months, I have received more recycling questions than usual. I will focus this edition of “Lettuce Recycle” on those questions. As a Recycling Block Leader and author of this column, I am committed to recycling education. Please continue to send your questions and recycling ideas to: recycling@hpwbana.org. Thank you!

• **CASH REGISTER RECEIPTS - CAN CASH REGISTER RECEIPTS GO INTO THE GREEN OR BLUE BIN?** No. Most of today’s cash register receipts are printed on thermal paper. This paper is treated with BPA, making the paper neither recyclable nor compostable. Please place these receipts in the trash can.

• **ARE CARBONLESS PAPER RECEIPTS ALSO TREATED WITH BPA?** Yes, they are. These are the duplicate receipts and invoices often given by people who do work at your home. The typical carbonless paper contains a high concentration of BPA. These receipts have to go into the trash can.

• **FOIL TOPS - ARE THE FOIL TOPS ON YOGURT, SOUR CREAM AND CREAM CHEESE RECYCLABLE?** If the tops are aluminum foil, they are recyclable providing they are clean and dry. Please be sure to have at least a 2-inch ball of foil before placing it in your blue bin.

• **HARD PLASTIC HOLDERS - ARE THE HARD PLASTIC HOLDERS ON BEER CANS RECYCLABLE?** Yes, they are.

• **LABELS AND TAPE ON CARBOARD BOXES - DO I NEED TO REMOVE TAPE AND LABELS FROM CARBOARD BOXES BEFORE THEY ARE RECYCLED?** No, tape and labels do not need to be removed before cardboard boxes go into the blue recycling bin. However, boxes do need to

be emptied of all Styrofoam and other packing material.

• **PLASTIC RECYCLING SYMBOL - WHAT IF PLASTIC HAS NO RECYCLING SYMBOL?** If a plastic container or bottle has no recycling symbol, please throw it into your trash can. Without a recycling symbol, it is impossible for the recycling center to sort and recycle it.

• **RECYCLE & REUSE DROP-OFF CENTER - IS THE RECYCLE & REUSE DROP-OFF CENTER REALLY OPEN?** The center was open, by appointment only, until December 23, 2020. It closed at that time when Austin went to COVID Stage 5. Please check the following website for the most current information: <https://www.austintexas.gov/departments/recycle-reuse-drop-center>

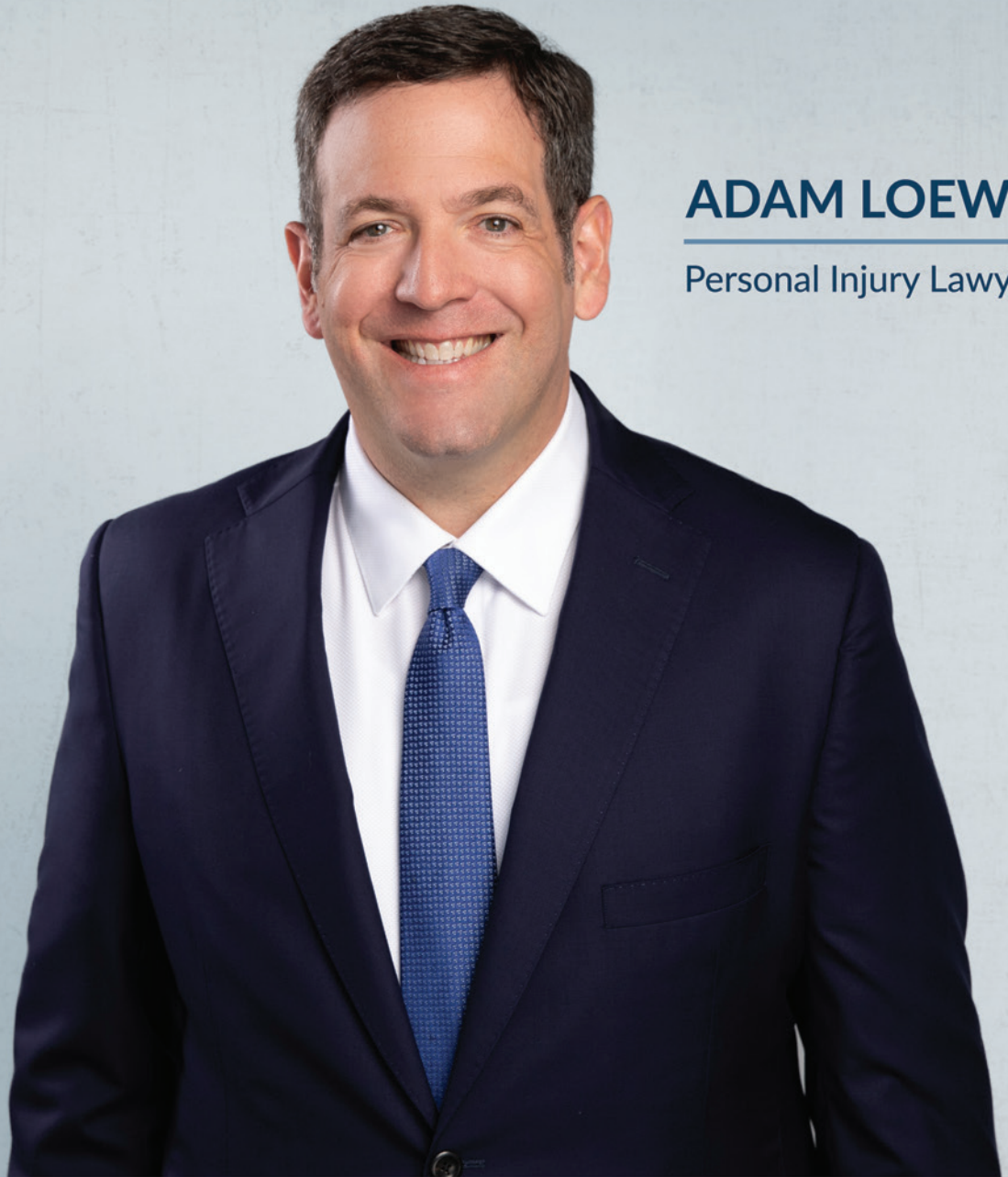
• **STYROFOAM - WHY CAN’T STYROFOAM BE PICKED UP CURBSIDE?** Styrofoam is very lightweight and takes up a lot of space. It can easily break into tiny pieces and scatter in the wind. Picking it up curbside would cause more litter pollution that is impossible to clean up. Please take your Styrofoam to the Recycle & Reuse Drop-Off Center. However, they do not take Styrofoam peanuts.

• **WHAT OTHER TYPES OF FOAM ARE RECYCLABLE?** Foam packaging, such as foam rolls, foam cushioning, foam packing sheets, and foam pouches, is also recyclable at the Recycle & Reuse Drop-Off Center.

Here is a very informative City of Austin recycling website that offers help in finding out how to recycle specific items: <http://www.austintexas.gov/what-do-i-do>.

**PLEASE REMEMBER, WHEN IN DOUBT
THROW IT OUT!**

Bicycle Accidents | Boating Accidents | Car Accidents | Dog Bites | Drunk Driving Accidents
Injuries to Children | Motorcycle Accidents | Slip and Falls | Truck Accidents | Wrongful Death



ADAM LOEWY

Personal Injury Lawyer



LOEWY LAW FIRM
HELPING INJURED TEXANS

LoewyFirm.com
(512) 280-0800

A CULTURAL EXPERIENCE

Want to bring a little culture into your life and the lives of your children? Why not try hosting a high school foreign exchange student? It's a great way to learn about a new culture all from the comfort of your home.

STS Foundation is currently looking for host families for the 2021/2022 school year. Hosting is such a rewarding experience and it benefits all of those involved.

STS Foundation accepts all types of host families – from single parents, newly marrieds, empty nesters and same sex couples. In order to host, you would need to meet the following qualifications:

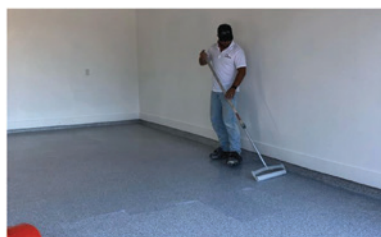
- Host must be 25 years or older
- Pass a background check
- Provide food for 3 meals daily
- Ensure reliable transportation to and from school (bus is ok)
- A bed for your student
- A safe and loving home

STS Foundation is a 501(c)(3) organization that places foreign exchange students with American host families. For more information about hosting, please contact me at 832-455-7881 PM me or email at vicki.stsfoundation@yahoo.com.

GARAGES CLOSETS EPOXY AND MORE!



\$250 OFF
OR FREE ACCESSORIES
MUST PRESENT THIS
AD AT THE TIME OR
ESTIMATE. LIMITED
TIME OFFER.



We are now offering

FREE VIRTUAL CONSULTATIONS!

GIVE US A CALL TO GET YOUR PROJECT STARTED!

512-791-7453

VISIT US ONLINE

www.fortitudehomesolutions.com



Let's Connect!

IMPORTANT NUMBERS

EMERGENCY NUMBERS

EMERGENCY	911
Fire.....	911
Ambulance.....	911
Sheriff – Non-Emergency.....	512-974-0845

SCHOOLS

Elementary	
Clayton.....	512-841-9200
Kiker	512-414-2584
Mills.....	512-841-2400
Patton.....	512-414-1780
Middle	
Bailey.....	512-414-4990
Small	512-841-6700
Gorzycki.....	512-841-8600
High School	
Austin.....	512-414-2505
Bowie	512-414-5247

UTILITIES

Water/Wastewater	
City of Austin.....	512-972-0101
City of Austin (billing)	512-494-9400
Emergency	512-972-1000
Texas State Gas	
Customer Service	1-800-700-2443
Gas related emergency	1-800-959-5325
Pedernales Electric Cooperative	
New service, billing	512-219-2602
Problems	512-219-2628
ATT/SBC Telephone	
New Service	1-800-288-2020
Repair	1-800-246-8464
Billing	1-800-288-2020
Allied Waste	512-247-5647
Time Warner Cable	512-485-5555

OTHER NUMBERS

Oak Hill Postal Station.....	1-800-275-8777
City of Austin	
Dead Animal Collection.....	512-494-9400
Abandoned/Disabled Vehicles	512-974-8119
Stop Sign Missing/Damaged	512-974-2000
Street Light Outage (report pole#).....	512-505-7617

NEWSLETTER PUBLISHER

Peel, Inc.	512-263-9181
Article Submissions	villagegazette@peelinc.com
Advertising.....	advertising@PEELinc.com

NATURE WATCH

EARLY SPRING HERALDS

by Jim and Lynne Weber

February is a time of change in Central Texas, with temperatures often ranging from the 30s to the 70s, and it is precisely these large swings in temperature that create challenges for local wildlife. Finding food is essential, and the little things like insects that emerge in early spring rely heavily on the early bloomers in our native landscape.

Elbowbush (*Forestiera pubescens*), also commonly called Stretchberry or Spring Herald, is a multi-branched deciduous shrub with smooth gray bark, long arched branches, and light green leaves. It is most conspicuous, though, in late January and early February, when small, yellow-green, petal-less flowers begin to burst in small clusters on the bare twigs. Common in open woodlands, brushy areas, and near streams, its early flowering period provides nectar for native bees and spring butterflies, namely Gray, Juniper, and Great Purple Hairstreaks. Elbowbush gets its common name from branches that typically form in right angles to one another, reminiscent of a bent elbow. It produces a quarter-inch, fleshy, dark blue fruit often devoured by wildlife in the summer, and its leaves turn a unique chartreuse color in the fall. Additionally, Elbowbush is one of the larval food plants for the Incense Cedar Sphinx (*Sphinx libocedrus*).



Elbowbush



Two-flowered Anemone

Poking their colorful blooms above the drab winter landscape are two species in the Buttercup Family, Two-flowered Anemone (*Anemone edwardsiana*) and Windflower (*Anemone berlandieri*). While both of these plants bloom from February to April, Two-flowered Anemone is an uncommon plant that is also called the Edwards Plateau Thimbleweed, since it grows only in this region of Central Texas. Windflower is common and has a more widespread range, and is often called Southern

Anemone or Tenpetal Anemone (even though it can have 10 to 20 petal-like sepals).

Two-flowered Anemone grows 6 to 12 inches tall, and is most often found on the moist banks of shaded canyons. Midway or further up the stem are three bracts, with side stems growing from those bracts, and each side stem can produce 1 to 3 flowers, with only 1 flower on the main stem. In reality, most plants carry only 2 or 3 flowers in total, each 0.5 to 1.25 inches wide and typically white, but can exhibit pink, lavender, light blue, or deep blue. In comparison, Windflower grows 6 to 15 inches tall, with low-lying leaves that are divided into three segments and are often reddish-purple on the underside. Its single stem carries only 1 flower, 0.75 to 1.5 inches wide, and it can exhibit the same range of colors as the Two-flowered Anemone.



Windflower

Found on the moist soils in shaded canyons in the southern half of the Hill Country, Golden Groundsel (*Packera obovate*) is a rosette-forming perennial that blooms from February to April. Slender flowering stems rise up to 18 inches above the basal rosette of oval leaves, topped with yellow flower clusters few to many-headed, with each flower 0.5 to 0.75 inches wide. Once established, this plant colonizes quickly, and can create an early-blooming, evergreen ground cover in shady, woodland areas.

Why not plant some of these early bloomers in your landscape, as they not only provide early nectar for bees and butterflies, but they are also welcoming heralds of our coming spring!

Send your nature-related questions to naturewatch@austin.rr.com and we'll do our best to answer them. If you enjoy reading these articles, check out our books, *Nature Watch Austin*, *Nature Watch Big Bend*, and *Native Host Plants for Texas Butterflies* (all published by Texas A&M University Press), and our blog at naturewatchaustin.blogspot.com.



Golden Groundsel

THE VILLAGE AT WESTERN OAKS

REAL ESTATE STATS*

AVERAGE DAYS
ON MARKET



10

AVERAGE SALE PRICE
(PER SQ FT)



\$227

AVERAGE LIST PRICE



\$465K

AVERAGE SALE PRICE



\$474K

MEDIAN LIST PRICE



\$459K

MEDIAN SALE PRICE



\$465K

*7/1/20–12/31/20, Austin Multiple Listing Service.



What's your home's value in today's market?
Is this the right time for *your* move?
Contact me today, and let's discuss.

BARRETT SANDEFUR

512-925-9100 • BarrettATXhomes.com

barrett@realtyaustin.com





**EARN YOUR POT OF GOLD
WHEN YOU ADVERTISE TO
THOUSANDS OF POTENTIAL
CLIENTS NEXT MONTH!**

We are the end of the rainbow
for your advertising needs.

512.263.9181
advertising@peelinc.com

The Villages Of Western Oaks newsletter is a private publication published by Peel, Inc. It is not sanctioned by any homeowners association or organization, nor is it subject to the approval of any homeowners association or organization, nor is it intended, nor implied to replace any publication that may be published by or on behalf of any homeowners association or organization. At no time will any source be allowed to use The Villages Of Western Oaks newsletter contents, or loan said contents, to others in anyway, shape or form, nor in any media, website, print, film, e-mail, electrostatic copy, fax, or etc. for the purpose of solicitation, commercial use, or any use for profit, political campaigns, or other self amplification, under penalty of law without written or expressed permission from Peel, Inc. The information in the newsletter is exclusively for the private use of Peel, Inc.

DISCLAIMER: Articles and ads in this newsletter express the opinions of their authors and do not necessarily reflect the opinions of Peel, Inc. or its employees. Peel, Inc. is not responsible for the accuracy of any facts stated in articles submitted by others. The publisher also assumes no responsibility for the advertising content with this publication. All warranties and representations made in the advertising content are solely that of the advertiser and any such claims regarding its content should be taken up with the advertiser.

* The publisher assumes no liability with regard to its advertisers for misprints or failure to place advertising in this publication except for the actual cost of such advertising.

* Although every effort is taken to avoid mistakes and/or misprints, the publisher assumes no responsibility for any errors of information or typographical mistakes, except as limited to the cost of advertising as stated above or in the case of misinformation, a printed retraction/correction.

* Under no circumstances shall the publisher be held liable for incidental or consequential damages, inconvenience, loss of business or services, or any other liabilities from failure to publish, or from failure to publish in a timely manner, except as limited to liabilities stated above.



- Aging in place so you don't have to move again.
- All-inclusive rates with meals, activities, care support, laundry/housekeeping services.
- Montessori-inspired program Spark, offering all residents opportunities to continue a purposeful life and role in their community.
- 2 Large, safe outdoor spaces available for independent and group activities.
- Pets encouraged to move in with their resident owner in addition to community animals.

512-280-2030 | www.aubergeonioncreek.com
11330 Farrah Lane, Austin TX 78748



IN PARTNERSHIP
WITH



TRANE®

It's Hard To Stop A Trane.®

*NOW IS THE BEST TIME TO UPGRADE
OR REPLACE YOUR AC*



512.339.7700
www.ArrowSvcCenter.com





PEEL, INC.

1405 Brandi Ln
Round Rock, TX 78681

PRSR STD
U.S. POSTAGE
PAID
PEEL, INC.

VW

SOUTHWEST AUSTIN'S #1 REALTOR

*Ashley sold my home in hours,
well above asking price. The next
day we went out to find my next home,
and she negotiated down the price of a new home I
was interested in considerably, in just minutes. From
the staging advice on my previous home, to coming
with me to the final walk through of my new home,
Ashley and her team made everything easy.*

-Theresa P.
Zillow 5-Star Review

SW AUSTIN'S
#1 REALTOR



FLEXIBLE
COMMISSIONS



Don't base your home value off of an "estimate." Let me give you the most accurate analysis of your home.



\$201,332! That's how much more my listings are than the average home sold in SW Austin.



Customized staging and marketing plan specifically tailored for your home.



"Flexible commissions" on top of our expertise means more money goes into your pocket than with other Realtors!

Based on ABOR Data

I want to make sure
**you make
the most**
out of 2021 with
**FLEXIBLE
COMMISSIONS!**

It's that easy!
The perfect
opportunity
to **make the
most money** out
of your
Real Estate
investment.

ASHLEY AUSTIN
HOMES

ASHLEY STUCKI

BROKER, REALTOR, CHLMS, CIPS, CRS

C 512.217.6103 | ashley@ashleyaustinhomes.com



Solar makes Sense

The Real Cost of Solar: \$.02 per kWh

Solutions:

Solar Panels

Energy Storage

EV Charging

Benefits:

*Increase your
home's value*

Never lose power

*Take advantage of
current Tax Credits*

713 - 635 - 9094
KILOWATTSOLAR.COM
SAVE@KILOWATTSOLAR.COM

*Your Energy Reimagined
Redefined Renewed*



Your Partner
in Energy
kilowattpartners.net

Access the best Electricity Plans
With low rates
Increased savings
Designed for family



Contact Us Today:

save@kilowattpartners.net | 713 - 589 - 5842

